

COLORADO SPRINGS AIRPORT

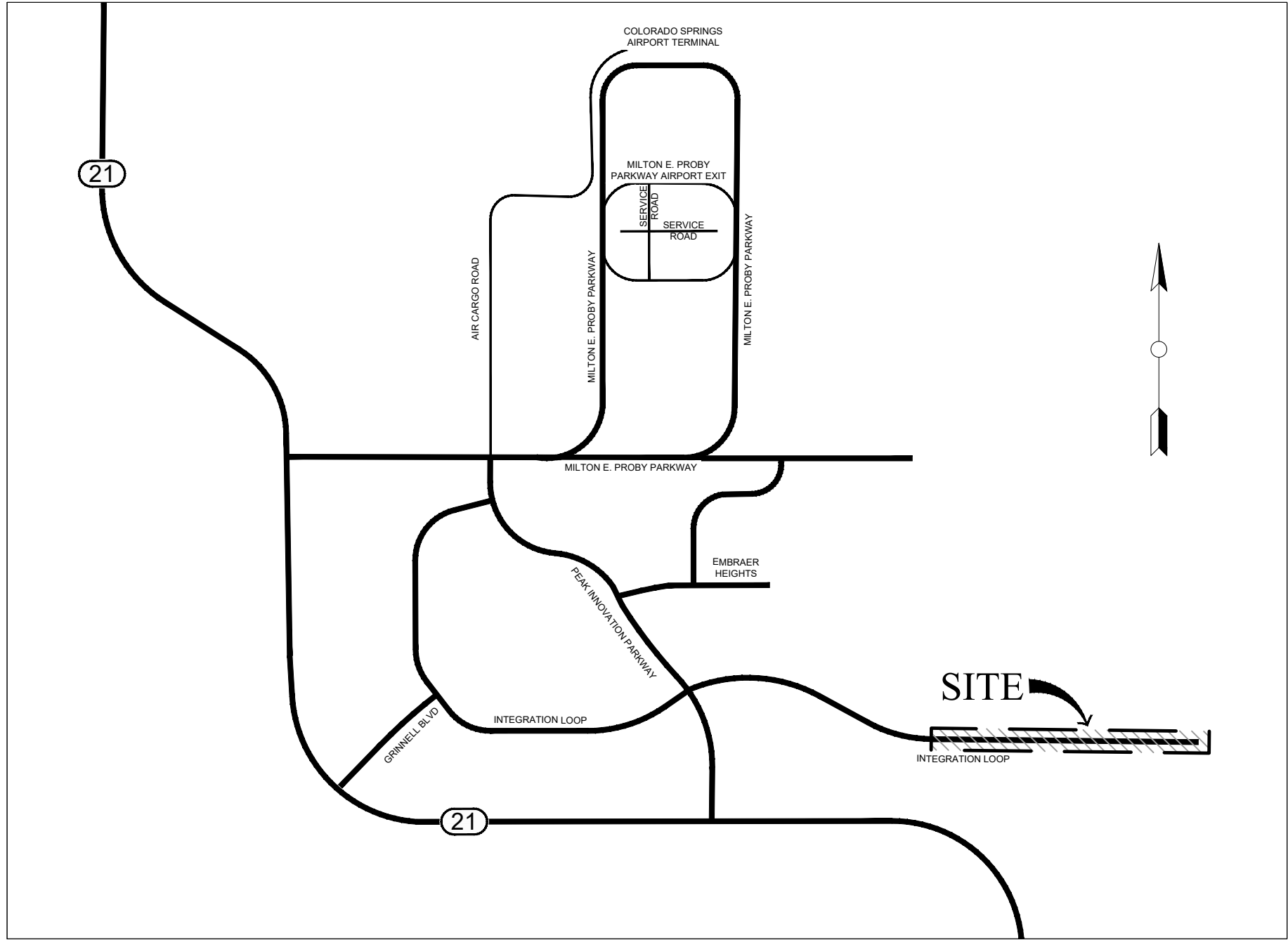
INTEGRATION LOOP PHASE 4

ROADWAY CONSTRUCTION PLANS

LOCATED IN A PORTION OF SECTIONS 4, 5, & 6, TOWNSHIP 15 SOUTH, RANGE 65 WEST OF THE 6TH PRINCIPLE MERIDIAN,
LOCATED IN THE CITY OF COLORADO SPRINGS, COUNTY OF EL PASO, STATE OF COLORADO.

SHEET INDEX

SHEET NO.	SHEET DESCRIPTION
1	COVER SHEET
2	GENERAL NOTES
3	SITE PLAN
4	INTEGRATION LOOP (1)
5	INTEGRATION LOOP (2)
6	INTEGRATION LOOP (3)
7	INTEGRATION LOOP (4)
8	DETAILS



VICINITY MAP
SCALE 1" = 2000'

PAVEMENT DESIGN

PAVEMENT DESIGN FOR INTEGRATION LOOP			
LIFT	GRADING	COMPOSITE SELECTION OPTION 1	COMPOSITE SELECTION OPTION 2
TOP LIFT			
MIDDLE LIFT			
BOTTOM LIFT			
BASE COURSE (2 LIFTS)			
TOTAL			

TO ACHIEVE PROPER COMPACTION AND MOISTURE CRITERIA, THE SUBGRADE SHALL BE SCARIFIED TO A MINIMUM DEPTH OF EIGHT (8) INCHES, MOISTURE CONDITIONED AND COMPACTED.

GENERAL LEGEND

	PROPERTY LINE		WATER LINE
	CATCH CURB & GUTTER		FIRE HYDRANT
	SPILL CURB & GUTTER		MANHOLE
	CENTERLINE		SIGN
	PR. 5' CONTOUR		GATE VALVE
	PR. 1' CONTOUR		CONC. S/W
	EX. 5' CONTOUR		IRRIGATION SLEEVE
	EX. 1' CONTOUR		EASEMENT
	STORM INLET		PHASELINE
	STORM DRAIN		RIP RAP
	SANITARY SEWER		FENCE
	EX. ROAD EDGE		

ABBREVIATIONS

AD = ANGLE DIFFERENCE	GB = GRADE BREAK
BC = BOTTOM OF CURB	HP = HIGH POINT
BOT = BOTTOM OF POND	LIP = LIP OF CONCRETE
BVC = BEGIN VERTICAL CURVE	LP = LOW POINT
C&G = CURB & GUTTER	M.E. = MATCH EXISTING
CB = CATCHBASIN	PC = POINT OF CURVATURE
CL = CENTERLINE	PCC = POINT OF COMPOUND CURVATURE
EL = ELEVATION	PI = POINT OF INFLECTION
EOA = EDGE OF ASPHALT	PRC = POINT OF REVERSE CURVATURE
EVC = END VERTICAL CURVE	ROW = RIGHT OF WAY
FES = FLARED END SECTION	SD = STORM DRAIN
FG = FINISHED GRADE	SS = SANITARY SEWER
FH = FIRE HYDRANT	TOP = TOP OF POND
FL = FLOWLINE	WL = WATER LINE

PROJECT TEAM

OWNER COLORADO SPRINGS AIRPORT 7770 MILTON E. PROBY PARKWAY, SUITE 550 COLORADO SPRINGS, CO 80916 CONTACT: TROY STOVER (719) 550-1967	DEVELOPER URBAN FRONTIER 1529 MARKET STREET, SUITE 200 DENVER, CO 80202 CONTACT: GARRETT BAUM (303) 884-7300
ENGINEER ENERTIA CONSULTING GROUP, LLC 1515 MARKET STREET DENVER, CO 80202 CONTACT: JEFF MOHR, PE (720) 250-8305	SURVEYOR POLARIS SURVEYING, INC. 1903 LELARAY STREET, SUITE 102 COLORADO SPRINGS, CO 80909 CONTACT: RANDALL HENCY, PLS (719) 448-0844

BENCHMARK

BENCH MARK: #5 REBAR LOCATED APPROXIMATELY 75' SOUTHEAST OF THE SOUTHEAST CORNER OF THE LIFT STATION BUILDING MARKED WITH 4' CROSS LATH.

NORTHING: 62654.52
EASTING: 29107.44
ELEVATION: 5924.01

DATUM: NAVD 88

REVIEW

STREET DESIGN FOR CITY ENGINEERING

UTILITY GRADE REVIEW	DATE
CURB & GUTTER REVIEW	DATE
FINAL REVIEW	DATE
DRAINAGE DESIGN	DATE
SIGNAGE AND STRIPING REVIEW	DATE

THIS IS FILED IN ACCORDANCE WITH SECTION 7.7.906 (DRAINAGE ORDINANCE) OF THE CODE OF THE CITY OF COLORADO SPRINGS, 2001 AS AMENDED.

ENGINEER'S STATEMENT

THESE DETAILED PLANS AND SPECIFICATIONS WERE PREPARED UNDER MY DIRECTION AND SUPERVISION. SAID DETAILED PLANS AND SPECIFICATIONS HAVE BEEN PREPARED ACCORDING TO THE ESTABLISHED CRITERIA FOR DETAILED DRAINAGE PLANS AND SPECIFICATIONS, AND SAID DETAILED PLANS AND SPECIFICATIONS ARE IN CONFORMITY WITH THE MASTER PLAN OF THE DRAINAGE BASIN. SAID DETAILED DRAINAGE PLANS AND SPECIFICATIONS MEET THE PURPOSES FOR WHICH THE PARTICULAR DRAINAGE FACILITY(S) IS DESIGNED. I ACCEPT RESPONSIBILITY FOR ANY LIABILITY CAUSED BY ANY NEGLIGENT ACTS, ERRORS OR OMISSIONS ON MY PART IN PREPARATION OF THE DETAILED DRAINAGE PLANS AND SPECIFICATIONS.

SIGNATURE: DATE: XX/XX/2022

PRINTED NAME: JEFFREY M. MOHR

EMAIL ADDRESS: JEFF.MOHR@ENERTIACG.COM

DEVELOPER'S STATEMENT

COLORADO SPRINGS AIRPORT HEREBY CERTIFIES THAT THE DRAINAGE AND ROADWAYS FOR THE INTEGRATION LOOP PHASE 3 PROJECT SHALL BE CONSTRUCTED ACCORDING TO THE DESIGN PRESENTED IN THIS PLAN. I UNDERSTAND THAT THE CITY OF COLORADO SPRINGS DOES NOT AND WILL NOT ASSUME LIABILITY FOR THE FACILITIES DESIGNED AND/OR CERTIFIED BY MY ENGINEER AND THAT ARE SUBMITTED TO THE CITY OF COLORADO SPRINGS PURSUANT TO SECTION 7.7.906 OF THE CITY CODE; AND CANNOT, ON BEHALF OF THE INTEGRATION LOOP EXTENSION FOR FLYWHEEL EAST, GUARANTEE THAT THE FINAL DESIGN REVIEW WILL ABSOLVE COLORADO SPRINGS AIRPORT AND / OR THEIR SUCCESSORS AND / OR ASSIGNS OF FUTURE LIABILITY FOR IMPROPER DESIGN.

NAME OF DEVELOPER/OWNER: COLORADO SPRINGS AIRPORT

AUTHORIZED SIGNATURE : DATE: XX/XX/2022

PRINTED NAME: TROY STOVER

TITLE: ASSISTANT DIRECTOR OF AVIATION EMAIL: TSTOVER@SPRINGSGOV.COM

PHONE: (719) 550-1967

ADDRESS: 7770 MILTON E. PROBY PKWY, SUITE 50
COLORADO SPRINGS, CO 80916

CITY OF COLORADO SPRINGS STATEMENT

PLAN REVIEW BY THE CITY OF COLORADO SPRINGS IS PROVIDED ONLY FOR GENERAL CONFORMANCE WITH DESIGN CRITERIA. THE CITY OF COLORADO SPRINGS IS NOT RESPONSIBLE FOR THE ACCURACY AND ADEQUACY OF THE DESIGN, DIMENSIONS, AND/OR ELEVATIONS WHICH SHALL BE CONFIRMED AT THE JOB SITE. THE CITY OF COLORADO SPRINGS, THROUGH THE APPROVAL OF THIS DOCUMENT, ASSUMES NO RESPONSIBILITY FOR COMPLETENESS AND/OR ACCURACY OF THIS DOCUMENT.

AMENDMENT

DATE

NO.



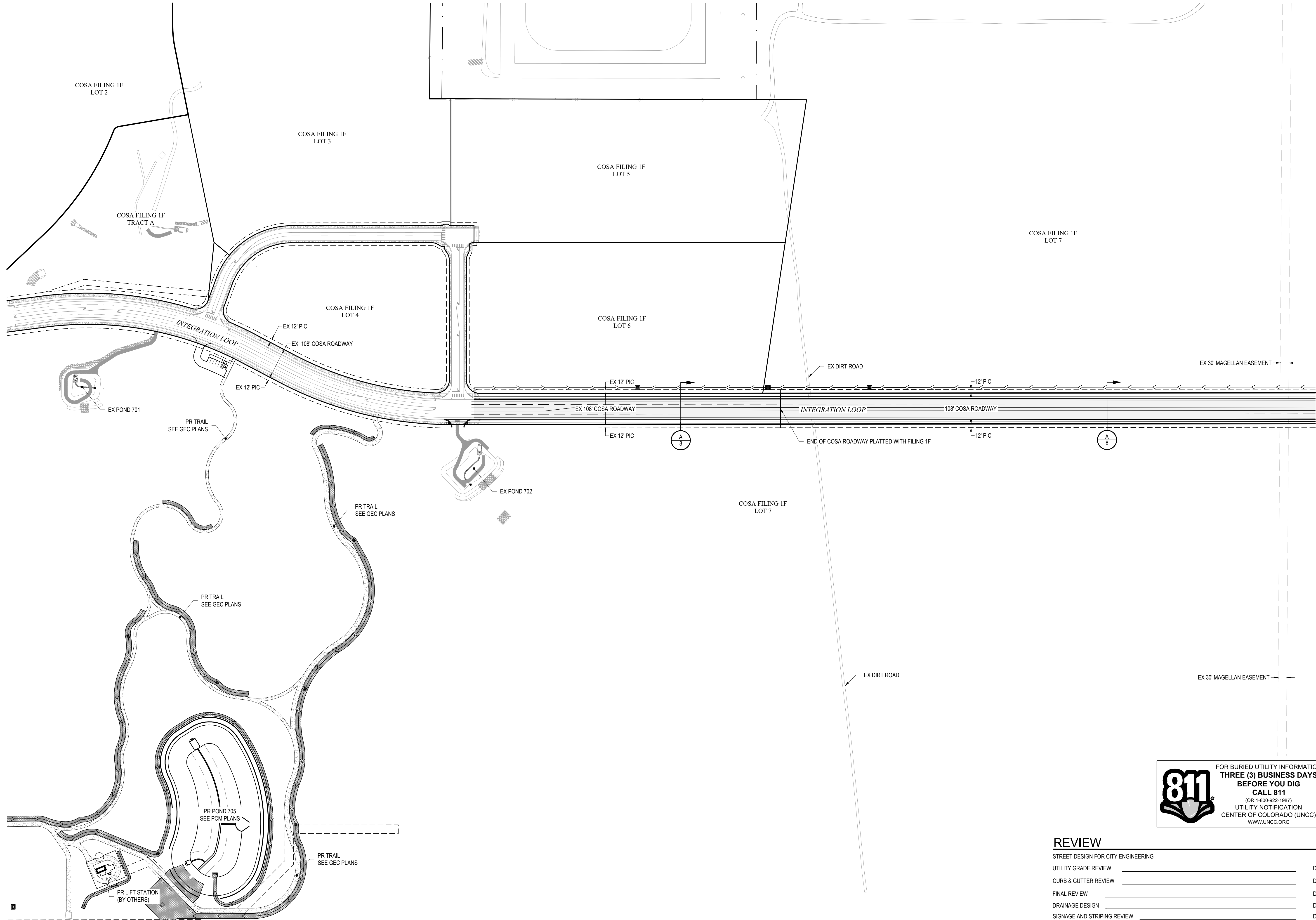
COLORADO SPRINGS AIRPORT
INTEGRATION LOOP PHASE 4
ROADWAY CONSTRUCTION PLANS
COLORADO SPRINGS, COLORADO

COVER SHEET

VERIFY SCALE
BAR IS ONE INCH ON
ORIGINAL DRAWING:
0 1"

DATE: NOVEMBER 1, 2022
SHEET

1 OF 8





FOR BURIED UTILITY INFORMATION
**THREE (3) BUSINESS DAYS
BEFORE YOU DIG**
CALL 811
(OR 1-800-922-1887)
UTILITY NOTIFICATION
CENTER OF COLORADO (UNCC)
WWW.UNCC.ORG



REVIEW



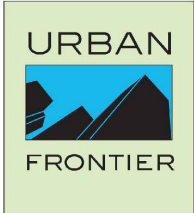
STREET DESIGN FOR CITY ENGINEERING	DATE
UTILITY GRADE REVIEW	DATE
CURB & GUTTER REVIEW	DATE
FINAL REVIEW	DATE
DRAINAGE DESIGN	DATE
SIGNAGE AND STRIPING REVIEW	DATE

THIS IS FILED IN ACCORDANCE WITH SECTION 7.7.906 (DRAINAGE ORDINANCE) OF THE CODE OF THE CITY OF COLORADO SPRINGS, 2001 AS AMENDED.

AMENDMENT

DATE

NO.



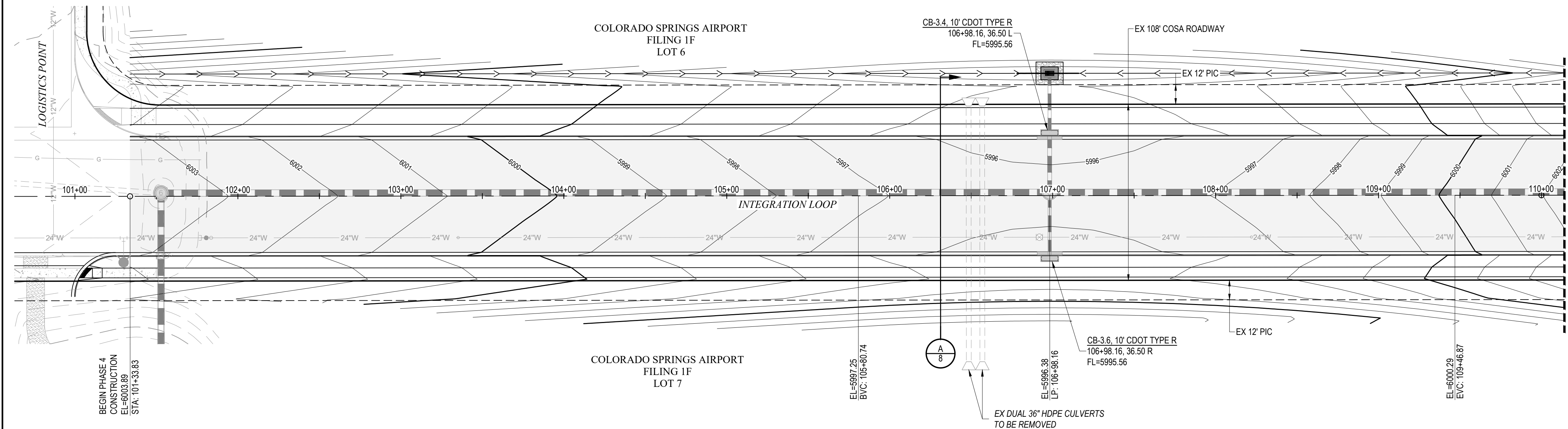
COLORADO SPRINGS AIRPORT
INTEGRATION LOOP PHASE 4
ROADWAY CONSTRUCTION PLANS
COLORADO SPRINGS, COLORADO

SITE PLAN

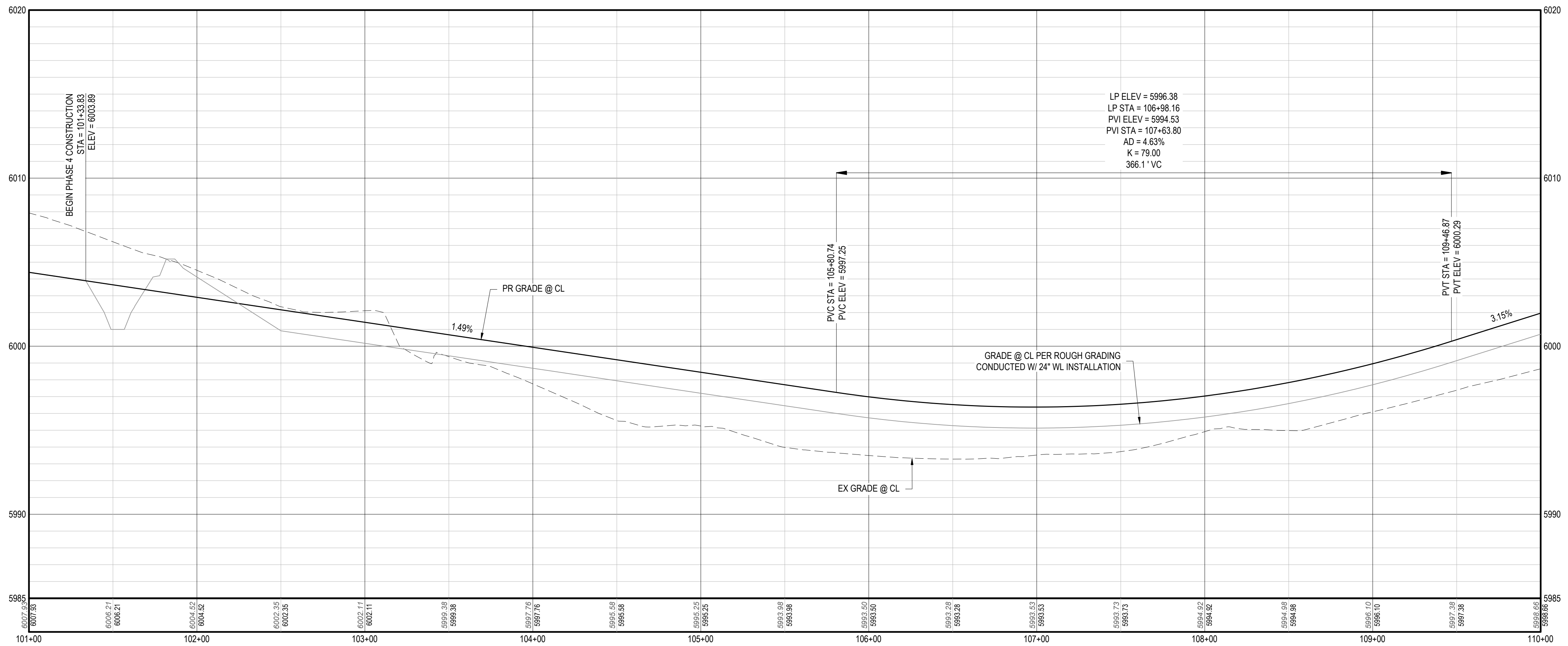
VERIFY SCALE
BAR IS ONE INCH ON
ORIGINAL DRAWING:
0 1"

DATE NOVEMBER 1, 2022
SHEET

3 OF 8



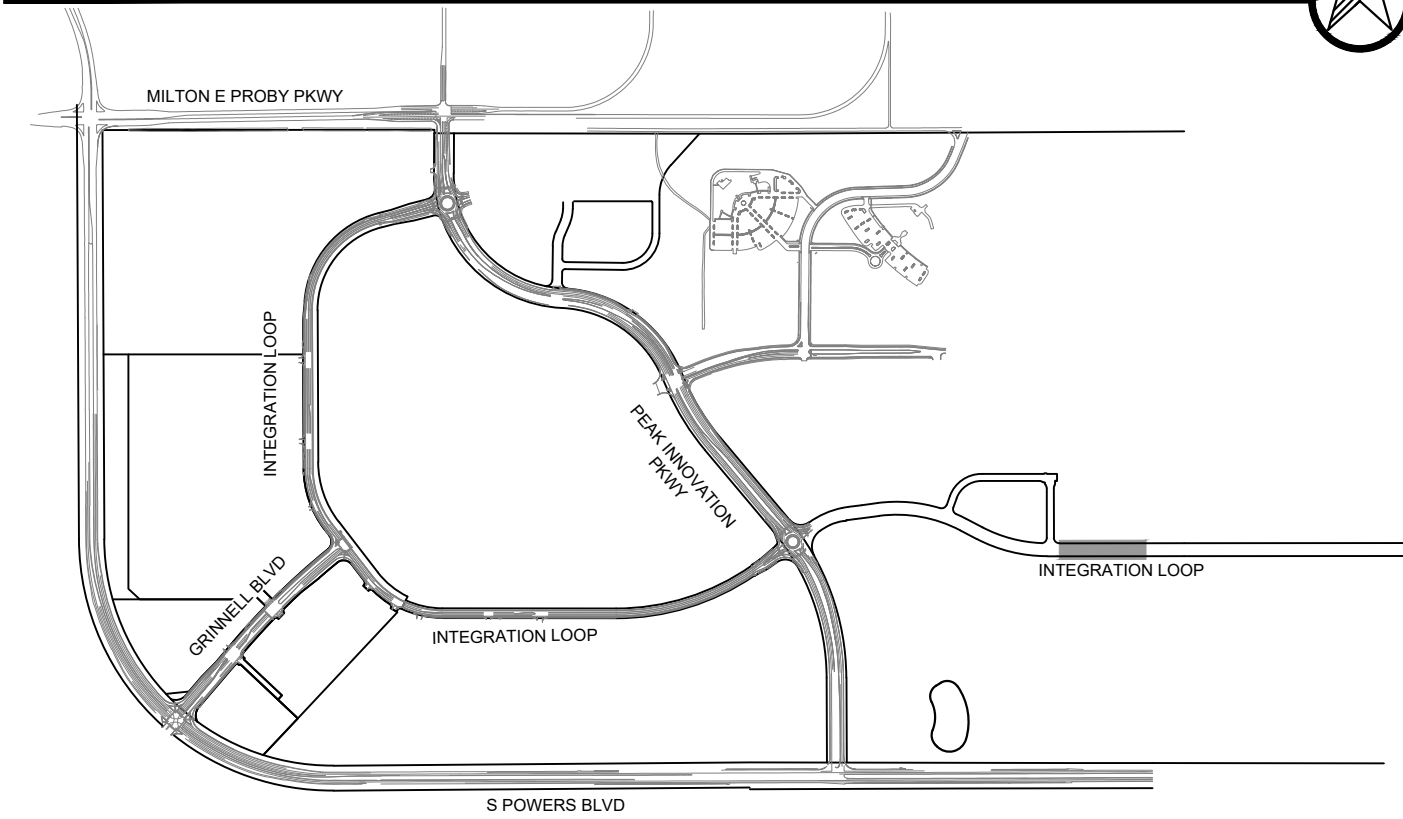
PLAN: INTEGRATION LOOP
HORIZONTAL SCALE: 1" = 40'



PROFILE: INTEGRATION LOOP-PH4 STA: 101+00 TO 110+00


HORIZONTAL SCALE: 1" = 40'
VERTICAL SCALE: 1" = 4'

KEY MAP

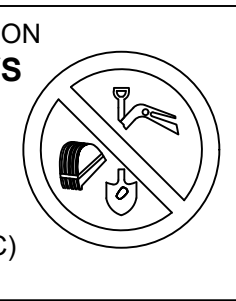


ROADWAY NOTES

- ALL PEDESTRIAN RAMPS:
 - 7.5% RUNNING SLOPE (MAXIMUM)
 - 1.5% MAX CROSS SLOPE @ LANDING
 - 1.5% MAX RUNNING SLOPE @ LANDING
- TRANSITION WALK TO TYPICAL SECTION. 4.9% MAX RUNNING SLOPE.
- FLOWLINE TRANSITION AS SHOWN ON PLAN & PROFILE.
- END TRANSITION SECTION AND BEGIN TYPICAL SECTION (SECTION A). SEE SHEET 21.
- 10FT TRANSITION FROM TYPE 1 8" CURB TO TYPE 4 4" MOUNTABLE CURB



FOR BURIED UTILITY INFORMATION
**THREE (3) BUSINESS DAYS
BEFORE YOU DIG**
CALL 811
(OR 1-800-922-1887)
UTILITY NOTIFICATION
CENTER OF COLORADO (UNCC)
WWW.UNCC.ORG



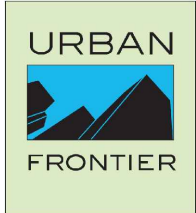
REVIEW

STREET DESIGN FOR CITY ENGINEERING		DATE	
UTILITY GRADE REVIEW		DATE	
CURB & GUTTER REVIEW		DATE	
FINAL REVIEW		DATE	
DRAINAGE DESIGN		DATE	
SIGNAGE AND STRIPING REVIEW		DATE	

THIS IS FILED IN ACCORDANCE WITH SECTION 7.7.906 (DRAINAGE ORDINANCE) OF THE CODE OF THE CITY OF COLORADO SPRINGS, 2001 AS AMENDED.

AMENDMENT

NO. DATE

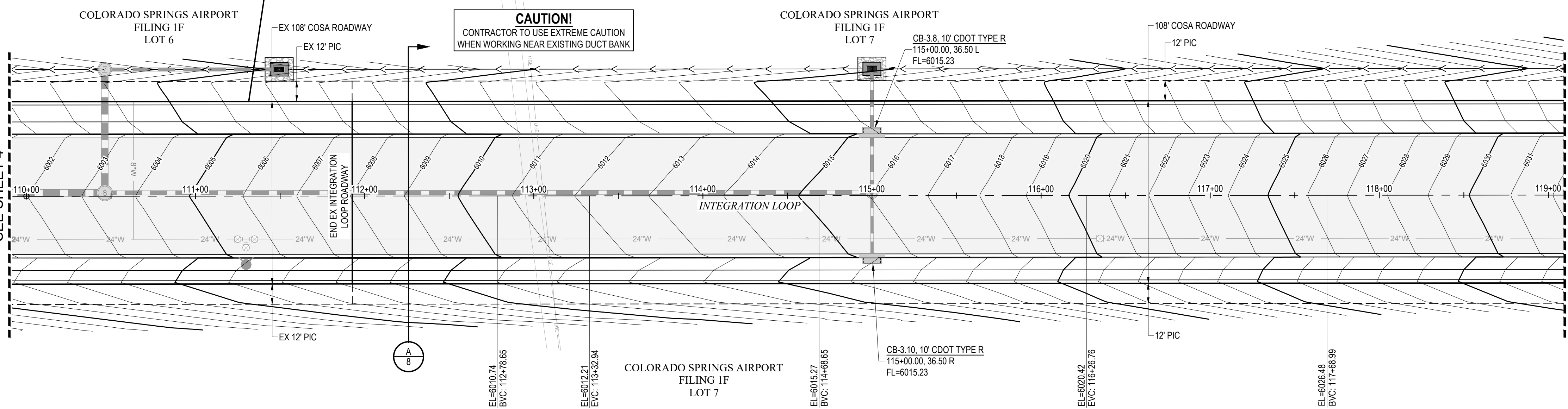


COLORADO SPRINGS AIRPORT
INTEGRATION LOOP PHASE 4
ROADWAY CONSTRUCTION PLANS
COLORADO SPRINGS, COLORADO

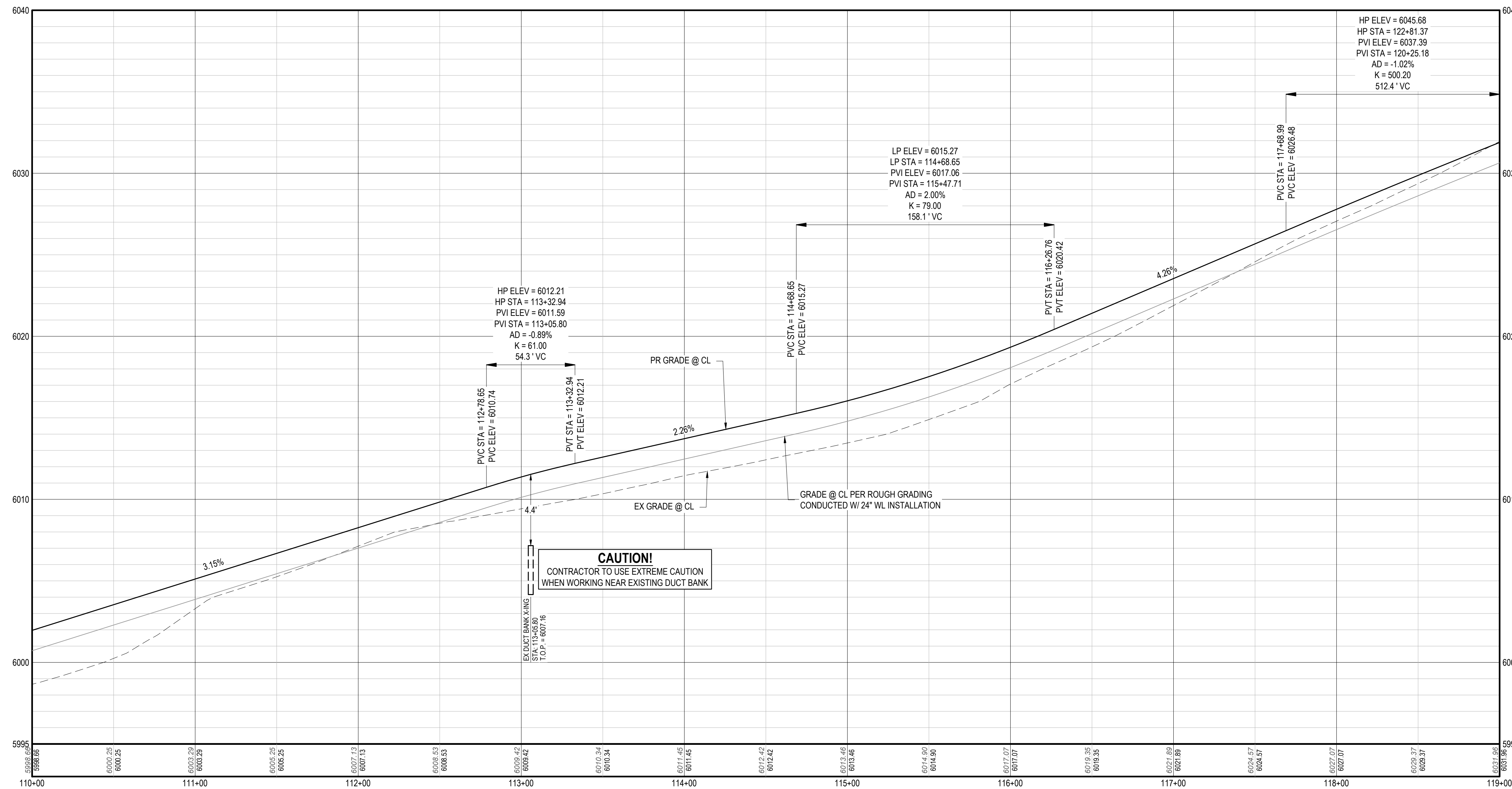
INTEGRATION LOOP (1)
PLAN & PROFILE

VERIFY SCALE
BAR IS ONE INCH ON
ORIGINAL DRAWING
DATE NOVEMBER 1, 2022
SHEET

INTEGRATION LOOP
SEE SHEET 4

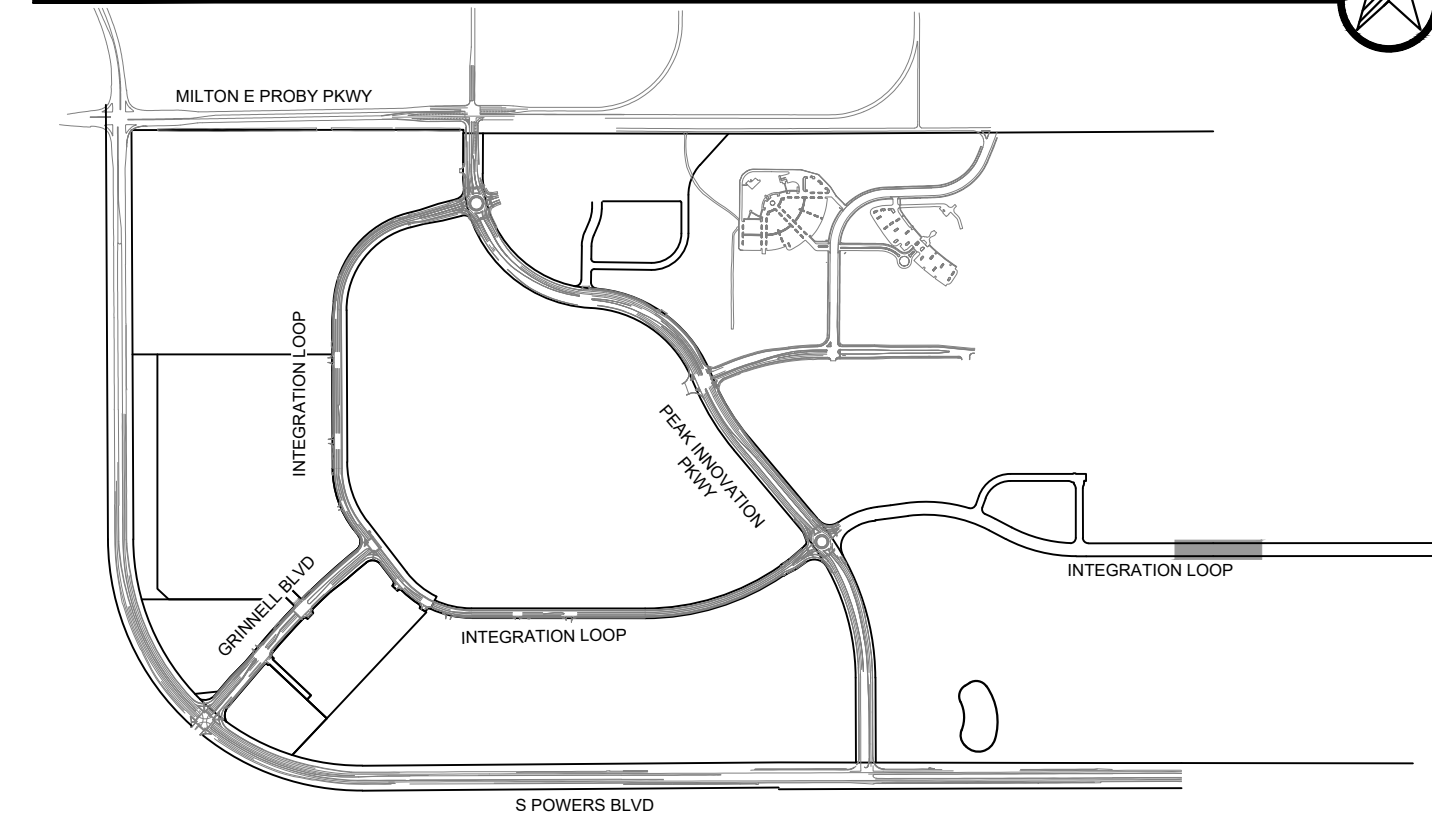


PLAN: INTEGRATION LOOP
HORIZONTAL SCALE: 1" = 40'



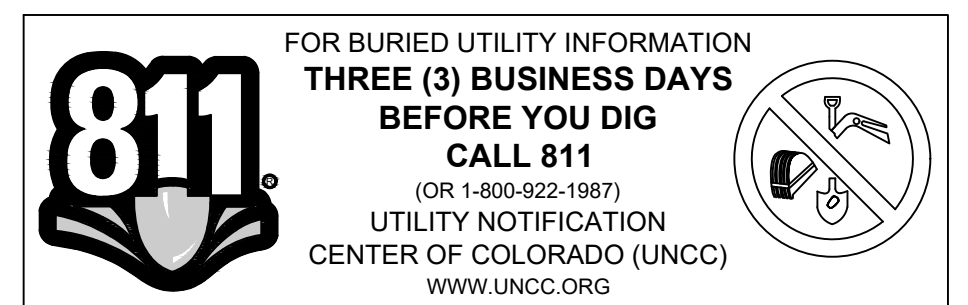
PROFILE: INTEGRATION LOOP-PH4 STA: 110+00 TO 119+00
HORIZONTAL SCALE: 1" = 40'
VERTICAL SCALE: 1" = 4'

KEY MAP



ROADWAY NOTES

- ALL PEDESTRIAN RAMP:
 - 7.5% RUNNING SLOPE (MAXIMUM)
 - 1.5% MAX CROSS SLOPE @ LANDING
 - 1.5% MAX RUNNING SLOPE @ LANDING
- TRANSITION WALK TO TYPICAL SECTION. 4.9% MAX RUNNING SLOPE.
- FLOWLINE TRANSITION AS SHOWN ON PLAN & PROFILE.
- END TRANSITION SECTION AND BEGIN TYPICAL SECTION (SECTION A). SEE SHEET 21.
- 10FT TRANSITION FROM TYPE 1 8" CURB TO TYPE 4 4" MOUNTABLE CURB



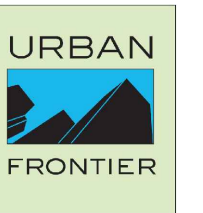
REVIEW

STREET DESIGN FOR CITY ENGINEERING		
UTILITY GRADE REVIEW	DATE	
CURB & GUTTER REVIEW	DATE	
FINAL REVIEW	DATE	
DRAINAGE DESIGN	DATE	
SIGNAGE AND STRIPING REVIEW	DATE	

THIS IS FILED IN ACCORDANCE WITH SECTION 7.7.906 (DRAINAGE ORDINANCE) OF THE CODE OF THE CITY OF COLORADO SPRINGS, 2001 AS AMENDED.

AMENDMENT

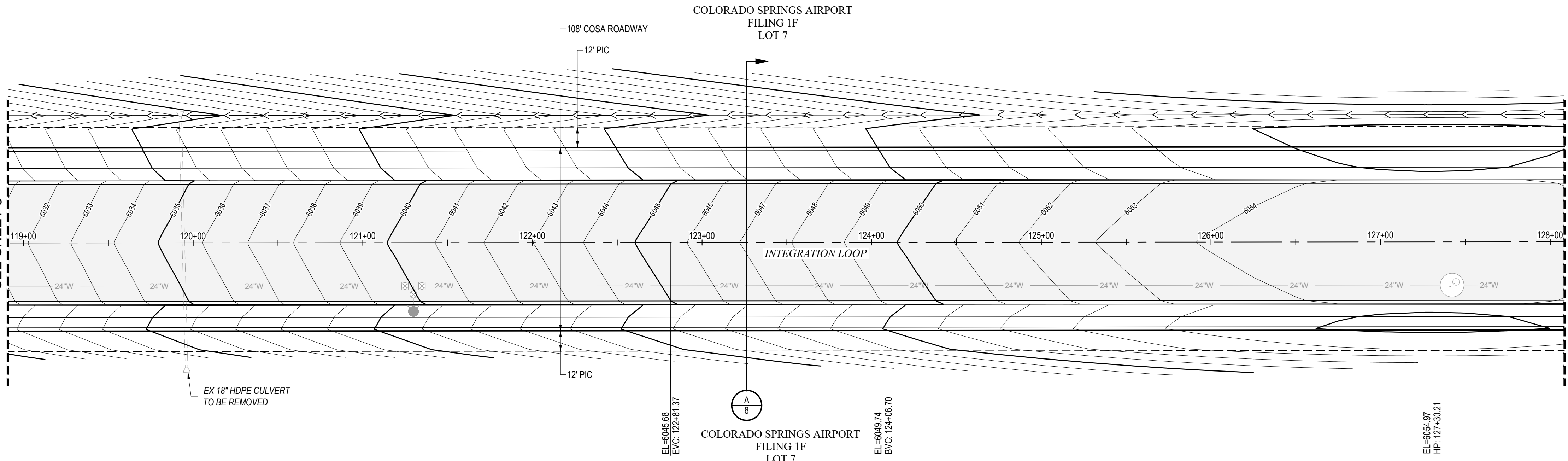
NO. DATE



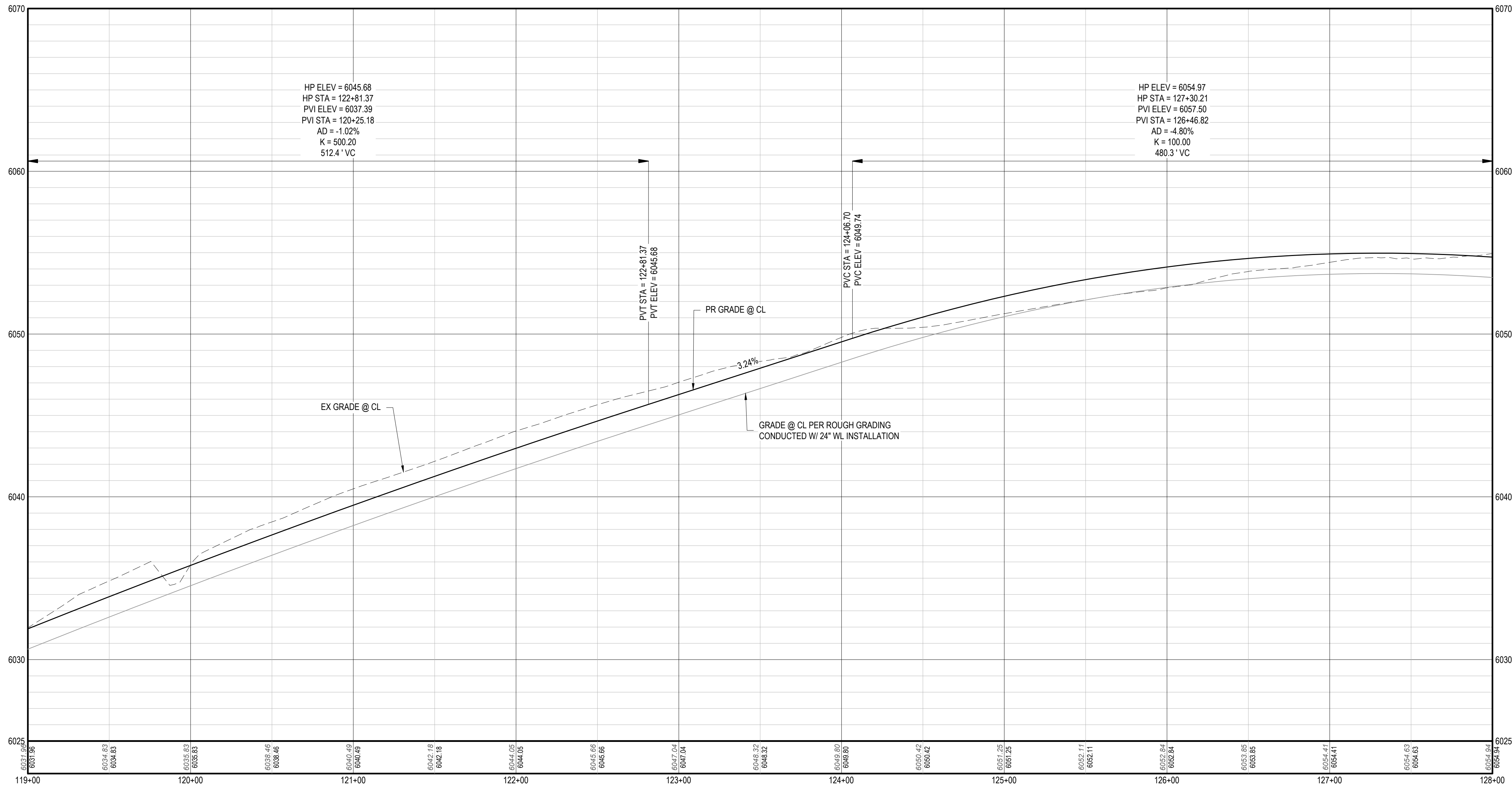
COLORADO SPRINGS AIRPORT
INTEGRATION LOOP PHASE 4
ROADWAY CONSTRUCTION PLANS
COLORADO SPRINGS, COLORADO
INTEGRATION LOOP (2)
PLAN & PROFILE

VERIFY SCALE
BAR IS ONE INCH ON
ORIGINAL DRAWING
DATE NOVEMBER 1, 2022
SHEET

INTEGRATION LOOP
SEE SHEET 5



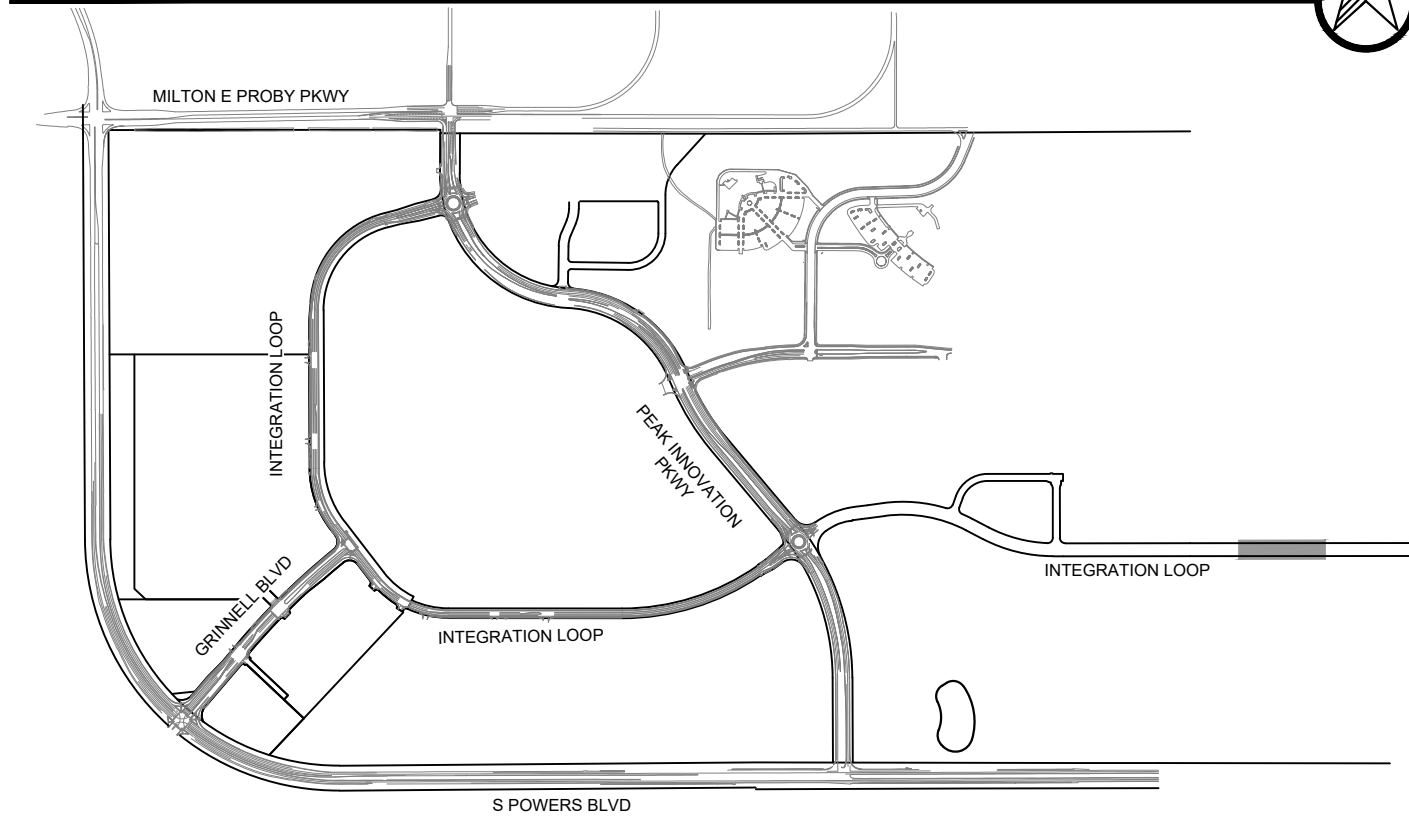
PLAN: INTEGRATION LOOP
HORIZONTAL SCALE: 1" = 40'



PROFILE: INTEGRATION LOOP-PH4 STA: 119+00 TO 128+00


HORIZONTAL SCALE: 1" = 40'
VERTICAL SCALE: 1" = 4'

KEY MAP




ROADWAY NOTES

- ALL PEDESTRIAN RAMPS:
 - 7.5% RUNNING SLOPE (MAXIMUM)
 - 1.5% MAX CROSS SLOPE @ LANDING
 - 1.5% MAX RUNNING SLOPE @ LANDING
- TRANSITION WALK TO TYPICAL SECTION. 4.9% MAX RUNNING SLOPE.
- FLOWLINE TRANSITION AS SHOWN ON PLAN & PROFILE.
- END TRANSITION SECTION AND BEGIN TYPICAL SECTION (SECTION A). SEE SHEET 21.
- 10FT TRANSITION FROM TYPE 1 8" CURB TO TYPE 4 4" MOUNTABLE CURB



FOR BURIED UTILITY INFORMATION
**THREE (3) BUSINESS DAYS
BEFORE YOU DIG**
CALL 811
(OR 1-800-922-1887)
UTILITY NOTIFICATION
CENTER OF COLORADO (UNCC)
WWW.UNCC.ORG



REVIEW

STREET DESIGN FOR CITY ENGINEERING		
UTILITY GRADE REVIEW	_____	DATE _____
CURB & GUTTER REVIEW	_____	DATE _____
FINAL REVIEW	_____	DATE _____
DRAINAGE DESIGN	_____	DATE _____
SIGNAGE AND STRIPING REVIEW	_____	DATE _____

THIS IS FILED IN ACCORDANCE WITH SECTION 7.7.906 (DRAINAGE ORDINANCE) OF THE CODE OF THE CITY OF COLORADO SPRINGS, 2001 AS AMENDED.

AMENDMENT

DATE

NO.

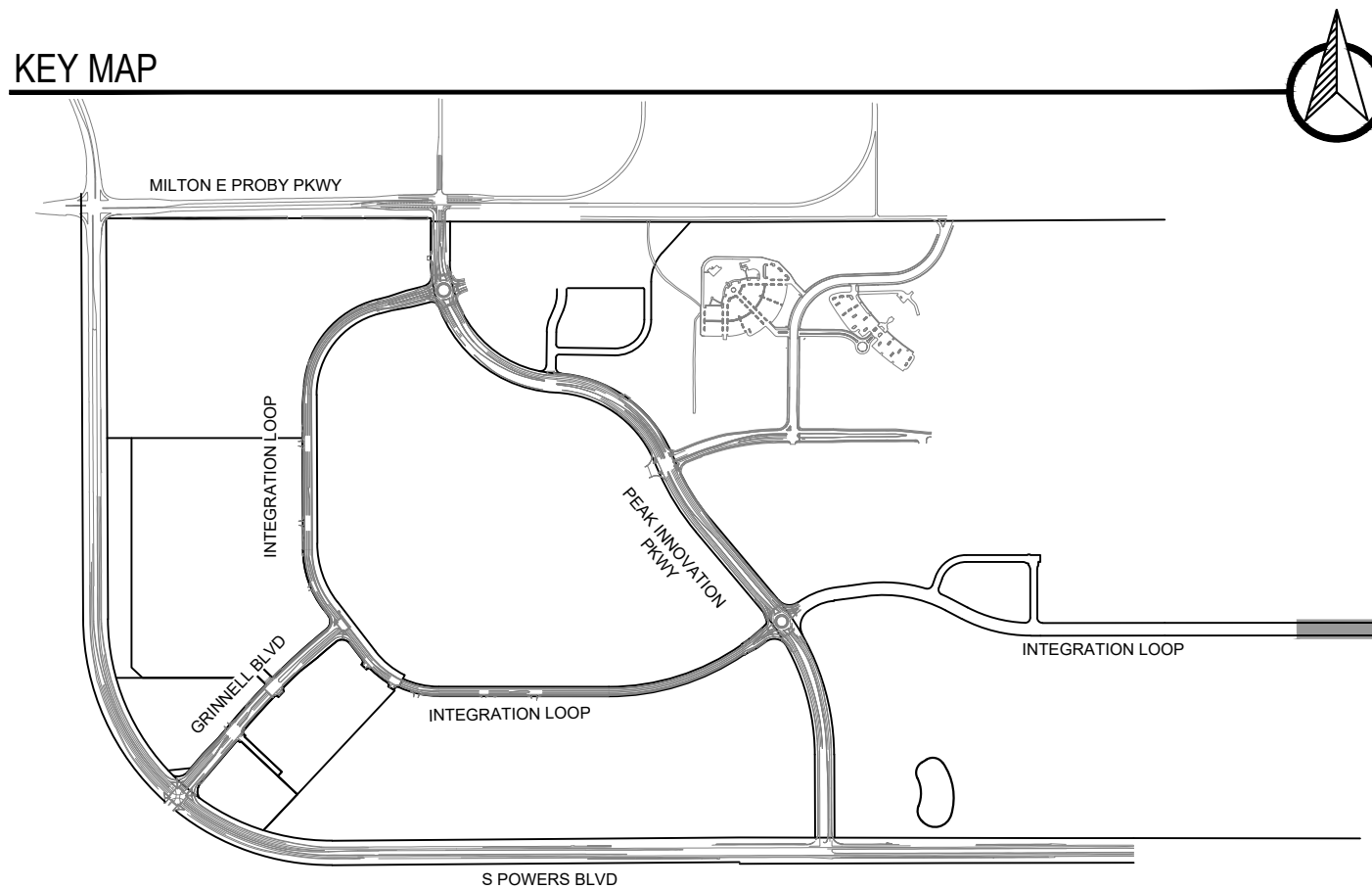
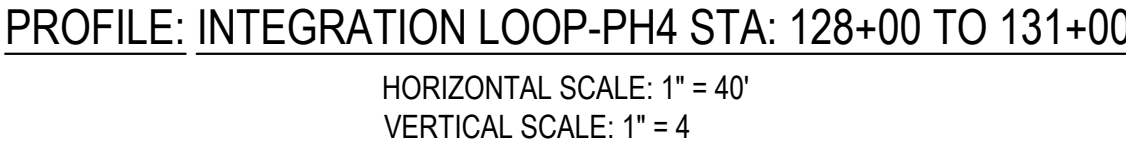
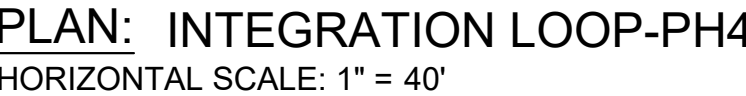


COLORADO SPRINGS AIRPORT
INTEGRATION LOOP PHASE 4
ROADWAY CONSTRUCTION PLANS
COLORADO SPRINGS, COLORADO

INTEGRATION LOOP (3)
PLAN & PROFILE

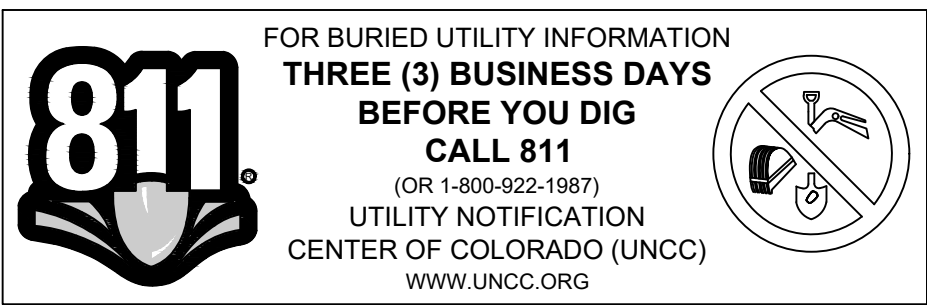
VERIFY SCALE
BAR IS ONE INCH ON
ORIGINAL DRAWING
1"

DATE NOVEMBER 1, 2022
SHEET



ROADWAY NOTES

- 1 ALL PEDESTRIAN RAMPS:
 - 7.5% RUNNING SLOPE (MAXIMUM)
 - 1.5% MAX CROSS SLOPE @ LANDING
 - 1.5% MAX RUNNING SLOPE @ LANDING
- 2 TRANSITION WALK TO TYPICAL SECTION. 4.9% MAX RUNNING SLOPE.
- 3 FLOWLINE TRANSITION AS SHOWN ON PLAN & PROFILE.
- 4 END TRANSITION SECTION AND BEGIN TYPICAL SECTION (SECTION A). SEE SHEET 21.
- 5 10FT TRANSITION FROM TYPE 1 8" CURB TO TYPE 4 4" MOUNTABLE CURB



REVIEW

STREET DESIGN FOR CITY ENGINEERING

UTILITY GRADE REVIEW	_____	DATE	_____
CURB & GUTTER REVIEW	_____	DATE	_____
FINAL REVIEW	_____	DATE	_____
DRAINAGE DESIGN	_____	DATE	_____
SIGNAGE AND STRIPING REVIEW	_____	DATE	_____

THIS IS FILED IN ACCORDANCE WITH SECTION 7.7.906 (DRAINAGE ORDINANCE) OF THE CODE OF THE CITY OF COLORADO SPRINGS, 2001 AS AMENDED.

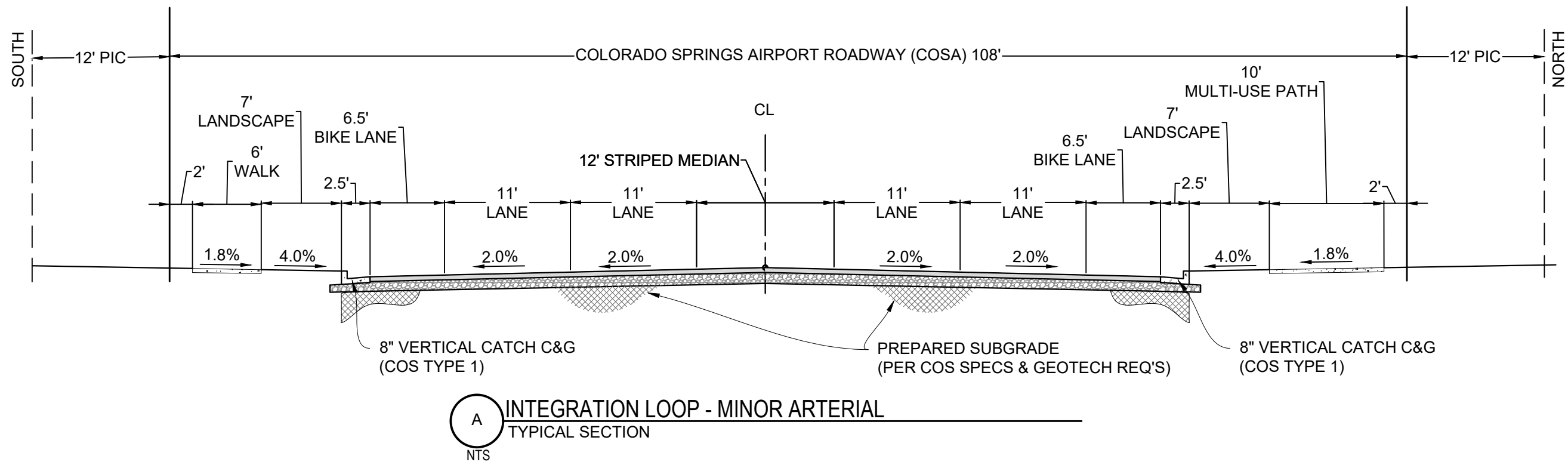
[illegible]

**COLORADO SPRINGS AIRPORT
INTEGRATION LOOP PHASE 4
ROADWAY CONSTRUCTION PLANS**
COLORADO SPRINGS, COLORADO

INTEGRATION LOOP (4)

VERIFY SCALE
BAR IS ONE INCH ON
ORIGINAL DRAWING.
0 1"

DATE NOVEMBER 1, 2022
SHEET



REVIEW

STREET DESIGN FOR CITY ENGINEERING	
UTILITY GRADE REVIEW	DATE
CURB & GUTTER REVIEW	DATE
FINAL REVIEW	DATE
DRAINAGE DESIGN	DATE
SIGNAGE AND STRIPING REVIEW	DATE

THIS IS FILED IN ACCORDANCE WITH SECTION 7.7.906 (DRAINAGE ORDINANCE) OF THE CODE OF THE CITY OF COLORADO SPRINGS, 2001 AS AMENDED.

AMENDMENT	
NO.	DATE

COLORADO SPRINGS AIRPORT
INTEGRATION LOOP PHASE 4
ROADWAY CONSTRUCTION PLANS
COLORADO SPRINGS, COLORADO

DETAILS

VERIFY SCALE
BAR IS ONE INCH ON
ORIGINAL DRAWING:
0 1"

DATE NOVEMBER 1, 2022

SHEET

8 OF 8