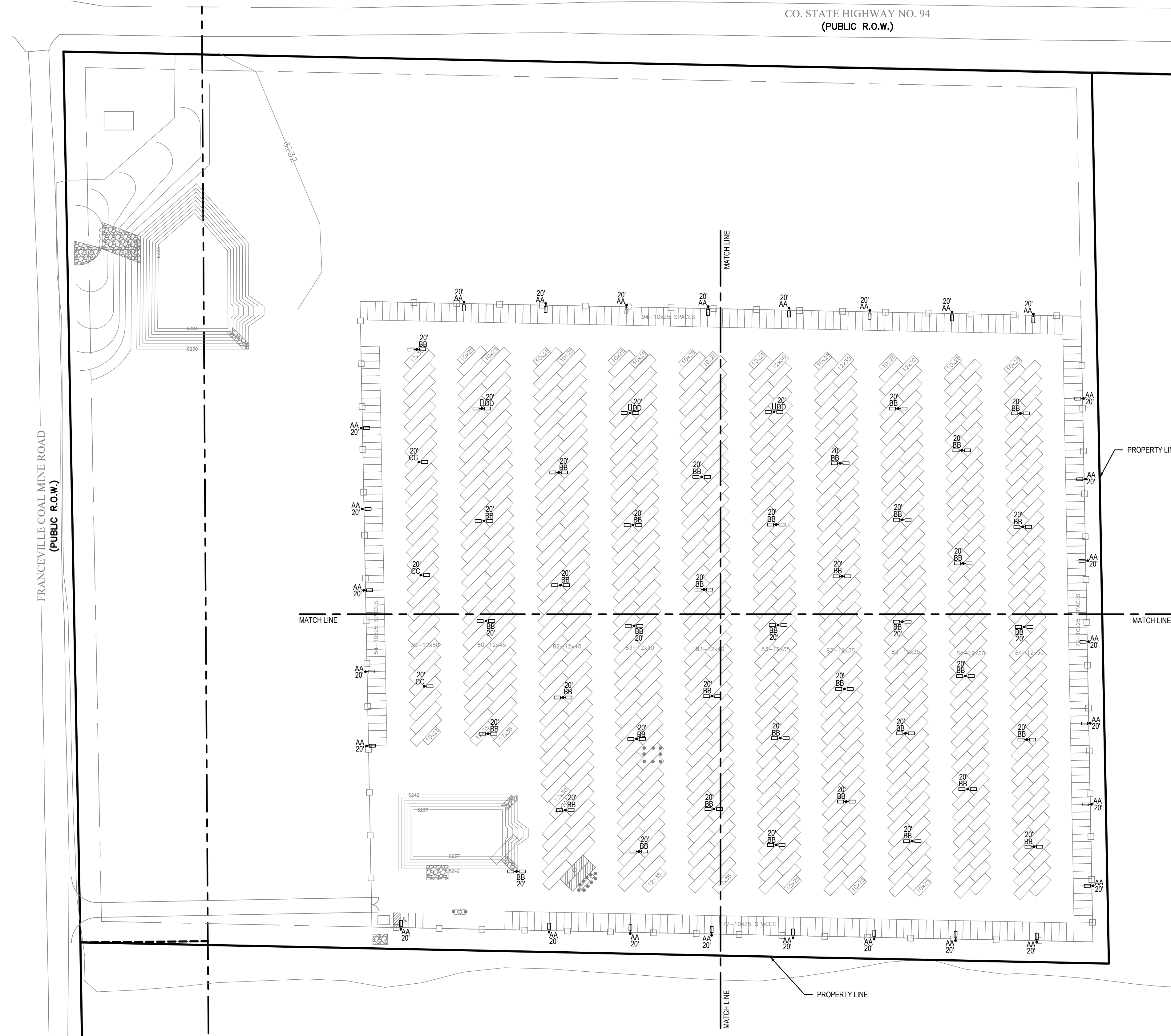


| LIGHT FIXTURE SCHEDULE | | | | | | | | | |
|------------------------|-------------------|----------------------------|--------|------------|---------------------|--|-------|-------|--------------------|
| TYPE | MFR | CATALOG NO. | LAMPS | | MTG | DESCRIPTION | NOTES | VOLTS | TOTAL WATTS |
| | | | LUMENS | COLOR TEMP | | | | | |
| AA | LITHONIA LIGHTING | DSX1 LED P3 30K 70CRI BLC4 | 9919 | 3000 | 17' POLE 3' BASE | SINGLE HEAD POLE LIGHT WITH BACK LIGHT CONTROL | | 277 | 102.17 PER HEAD |
| BB | LITHONIA LIGHTING | DSX1 LED P3 30K 70CRI T5W | 14011 | 3000 | 17' POLE 3' BASE | DOUBLE HEAD POLE LIGHT | | 277 | 102.17 PER HEAD |
| CC | LITHONIA LIGHTING | DSX1 LED P5 30K 80CRI T5W | 16293 | 3000 | 17' POLE 3' BASE | SINGLE HEAD POLE LIGHT | | 277 | 138.16 PER HEAD |
| DD | LITHONIA LIGHTING | DSX1 LED P3 30K 70CRI T5W | 14011 | 3000 | 17' POLE 3' BASE | TRIPLE HEAD POLE LIGHT | | 277 | 102.17 PER HEAD |

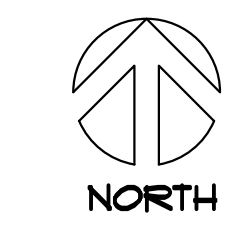
GENERAL NOTES:
1. ALL FIXTURES TO BE FULL CUTOFF


| Calculation Summary | | | | | | | | | |
|---------------------|-------------|-------|-----|-----|-----|---------|---------|--------|--|
| Label | CalcType | Units | Avg | Max | Min | Avg/Min | Max/Min | Grid Z | |
| RV Site | Illuminance | Fc | 1 | 3.8 | 0.0 | N.A. | N.A. | 0 | |

CO. STATE HIGHWAY NO. 94
(PUBLIC R.O.W.)



2 OVERALL SITE PLAN
DP-1 SCALE: 1"=80'0"





d-series

Specifications

EPA: 0.69 Ft² (0.06 m²)

Length: 32.71" (831 mm)

Width: 14.26" (362 mm)

Height H1: 7.68" (195 mm)

Height H2: 2.73" (69 mm)

Weight: 34 lbs (15.4 kg)

Introduction

The modern styling of the D-Series features a highly refined aesthetic that blends seamlessly with its environment. The D-Series offers the benefits of the latest in LED technology into a high performance, high efficacy, long-life luminaire.

The photometric performance results in sites with excellent uniformity, greater pole spacing and lower power density. D-Series outstanding photometry aids in reducing the number of poles required in area lighting applications with typical energy savings of 65% and expected service life of over 100,000 hours.

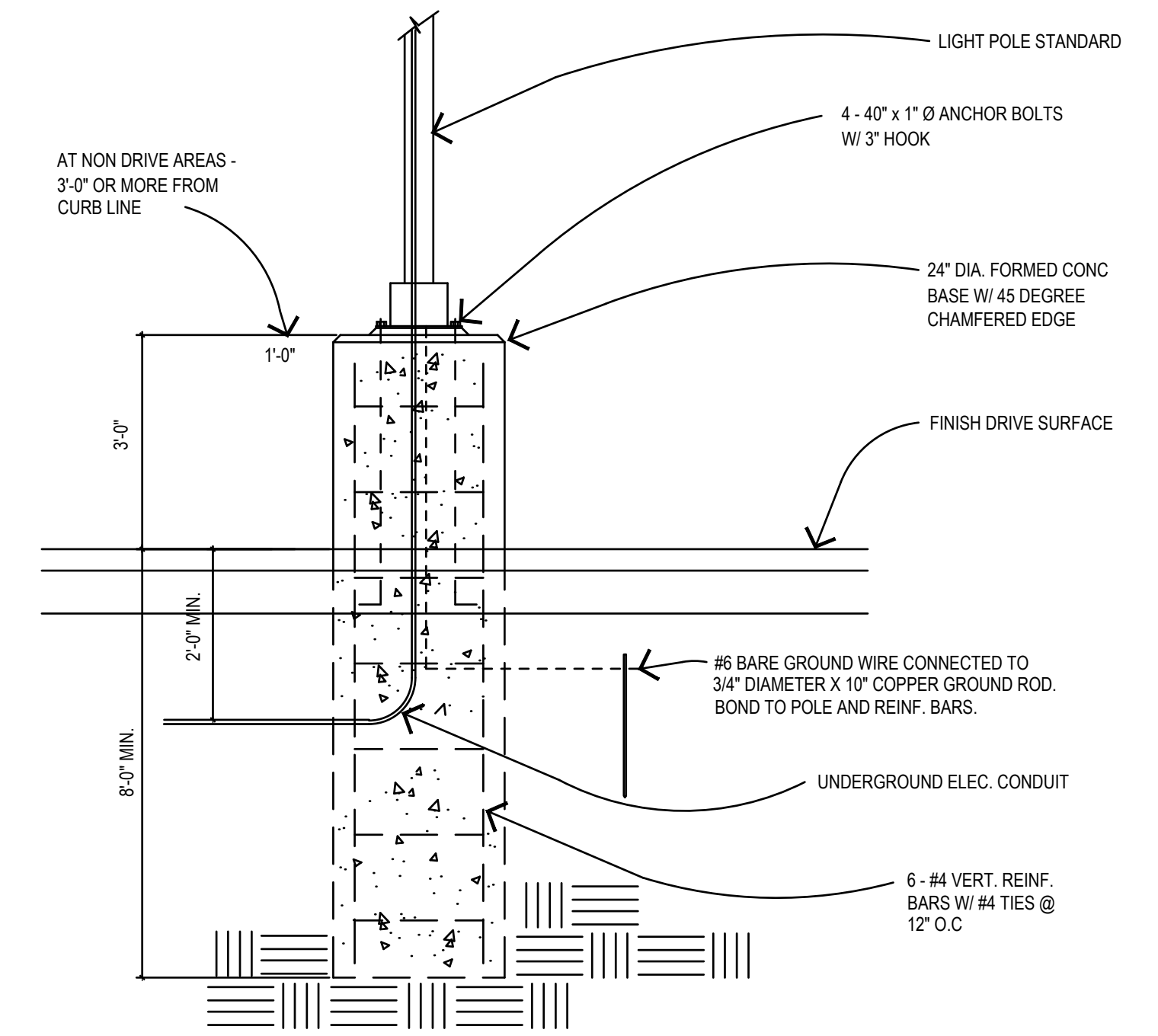
Ordering information EXAMPLE: DSX1 LED P7 40K 70CRI T3M MVOLT SPA NLAIR2 PIRHN DDBXD

| Series | LEDs | Color Temperature | Color Rendering Index | Distribution | Voltage | Mounting |
|--|--|--|------------------------|--------------------------------|---------------------------------|-------------------|
| DSX1 LED | Forward optics P1 P6 P2 P7 P3 P8 P4 P9 P5 | (this section 70CRI only) | | AFR Automotive front row | TSM Type V medium | MVOLT (120V-277V) |
| | | 30K 3000K | 70CRI | T1S Type I short | T3LG Type V low glare | HVOLT (347V-480V) |
| | | 40K 4000K | 70CRI | T2M Type II medium | T5W Type V wide | XVOLT (277V-480V) |
| | | 50K 5000K | 70CRI | T3M Type III medium | BLC3 Type III backlight control | |
| | | (this section 80CRI only, extended lead times apply) | | T3LG Type III low glare | BLC4 Type IV backlight control | |
| Rotated optics P10* P12* P11* P13* | (this section 80CRI only, extended lead times apply) | | T4M Type IV medium | BLC4 Type IV backlight control | | |
| | 27K 2700K | 80CRI | T4LG Type IV low glare | LCCO Left corner cutoff | | |
| | 30K 3000K | 80CRI | T5M Type V medium | RCCO Right corner cutoff | | |
| | 35K 3500K | 80CRI | T5M Type V medium | | | |
| | 40K 4000K | 80CRI | T5M Type V medium | | | |

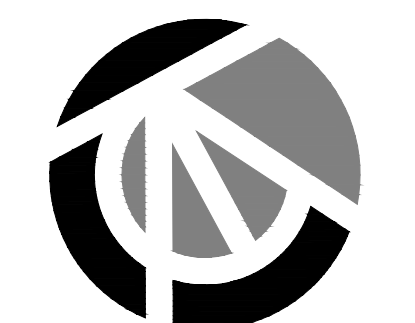
| Control options | Other options | Finish options |
|---|--|--|
| Shipped installed NLAIR2 PIRHN r-light All gen 2 enabled with bi-level motion / ambient sensor, 3-40' mounting height, ambient sensor resolution 26.7% ^{1,2} PIR High/Low motion/ambient sensor 8-40' mounting height, ambient sensor enabled at 26.7% ^{1,2} PER NEMA 4 wet/damp receptacle only (controls ordered separately) ^{1,2} PERS Five-pin receptacle only (controls ordered separately) ^{1,2} | Shipped installed SPROCK 20KV surge protection HS House-side shield (black finish standard) ^{1,2} L90 Left rotated optics ¹ R90 Right rotated optics ¹ CCE Castal Construction ^{1,2} HA 50°C ambient operation ^{1,2} Shipped separately EGSR External Glass Shield (reversible, field install required, matches housing finish) ¹ B308 Bird Spikes (field install required) | Shipped installed DDBXD Dark Bronze DBLXD Black DNALD Natural Aluminum DWRHD White DDBXD Textured dark bronze DBLXD Textured black DNALD Textured natural aluminum DWRHD Textured white |

One Lithonia Way • Corvallis, Georgia 30012 • Phone: 1-800-705-SERV (7378) • www.lithonia.com

DSX1 LED Rev 03/15/23 Page 1 of 10



1 TALL POLE BASE
DP-1 SCALE: NONE



Chavez Tiffany & Ayers
Engineering Corporation
611 North Nevada Avenue
Colorado Springs, Colorado 80903
P (719)636-0021
matt@ctaengcorp.com

ABTR STORAGE
 PHOTOMETRIC PLAN
 415 N. FRANCEVILLE COAL MINE RD
 COLORADO SPRINGS, COLORADO

OWNER: Mike Jacobson
719-235-8195
Mike@FlyingHorseRealty.com

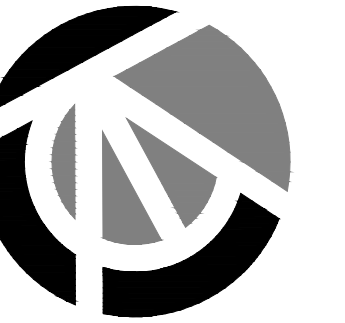
ISSUE HISTORY:

| NO. | DATE | DESCRIPTION |
|-----|------|-------------|
| | | |
| | | |

DRAWN BY MTC
CHECKED BY JJA
DATE 5/5/2023

DRAWING TITLE
PHOTOMETRIC PLAN

DRAWING NO.
DP-1



Chavez Tiffany & Ayers
Engineering Corporation

611 North Nevada Avenue
Colorado Springs, Colorado 80903
P (719)636-0021
matt@ctaengcorp.com

ABTR STORAGE
PHOTOMETRIC PLAN
415 N. FRANCEVILLE COAL MINE RD
COLORADO SPRINGS, COLORADO

OWNER: Mike Jacobson
719-235-8195
Mike@FlyingHorseRealty.com

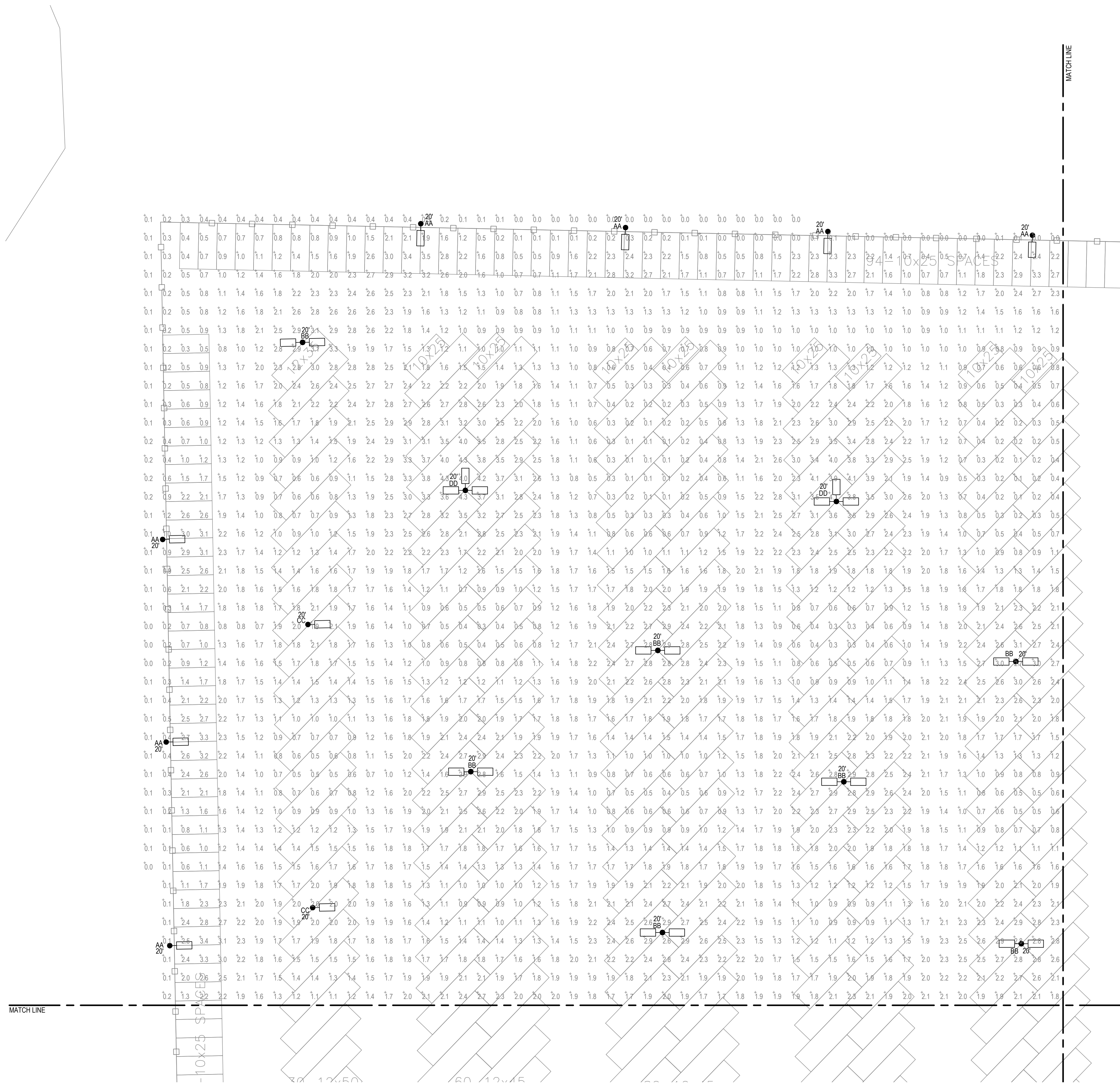
ISSUE HISTORY:

| NO. | DATE | DESCRIPTION |
|-----|------|-------------|
| | | |
| | | |
| | | |
| | | |
| | | |
| | | |
| | | |
| | | |
| | | |
| | | |

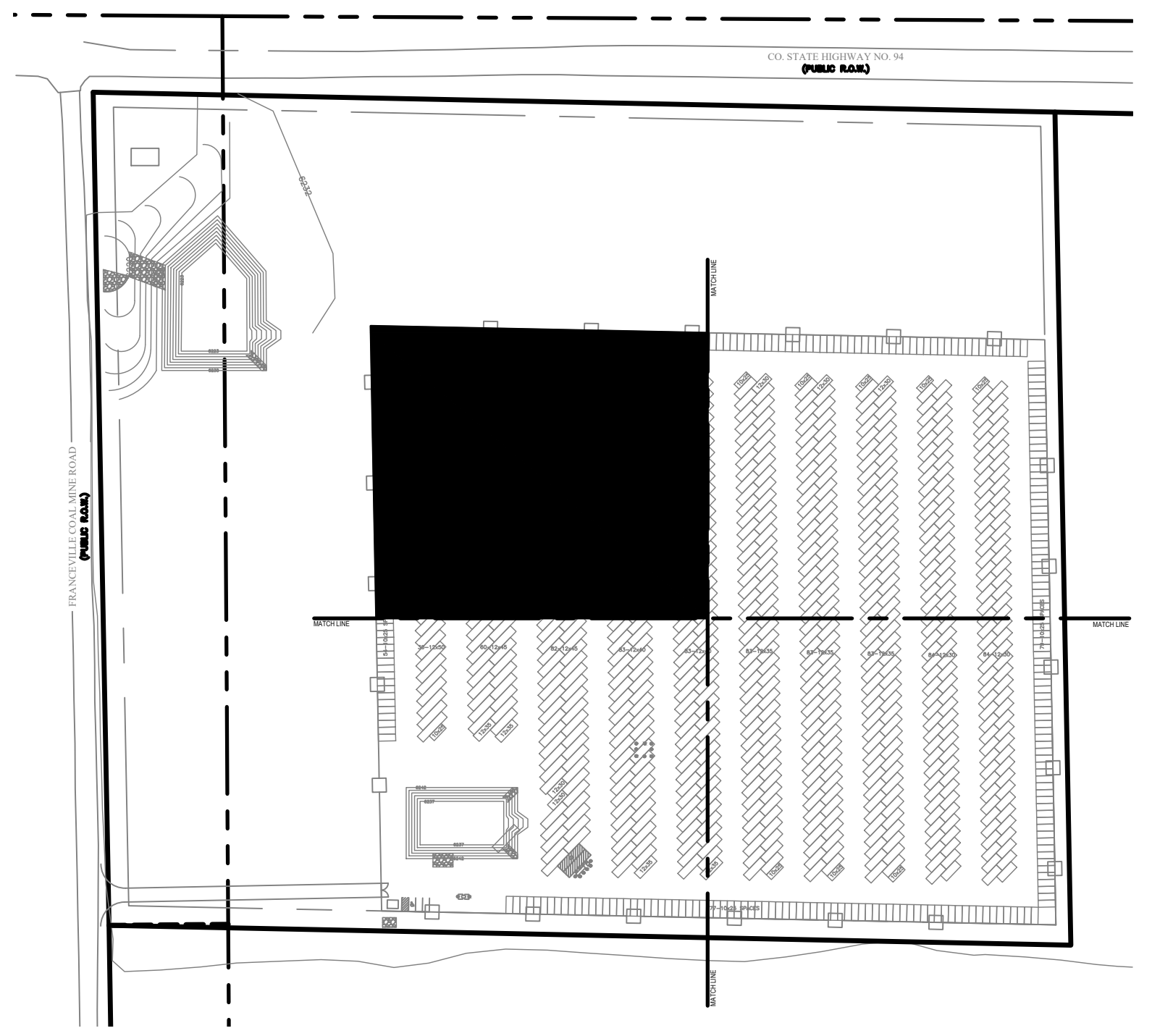
DRAWN BY MTC
CHECKED BY JJA
DATE 5/5/2023

DRAWING TITLE
PHOTOMETRIC PLAN

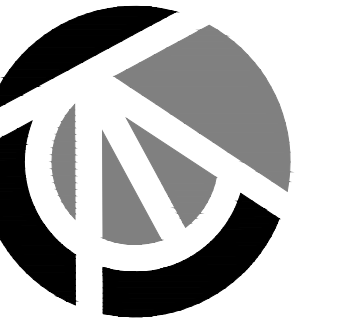
DRAWING NO.
DP-2



2 PARTIAL SITE PHOTOMETRIC PLAN
DP-2 SCALE: 1"=30'-0"



1 KEY PLAN
DP-2 SCALE: N/A



Chavez Tiffany & Ayers
Engineering Corporation

611 North Nevada Avenue
Colorado Springs, Colorado 80903
P (719) 636-0021
matt@ctaengcorp.com

**ABTR STORAGE
PHOTOMETRIC PLAN**
415 N. FRANCEVILLE COAL MINE RD
COLORADO SPRINGS, COLORADO

OWNER: Mike Jacobson
719-235-8195
Mike@FlyingHorseRealty.com

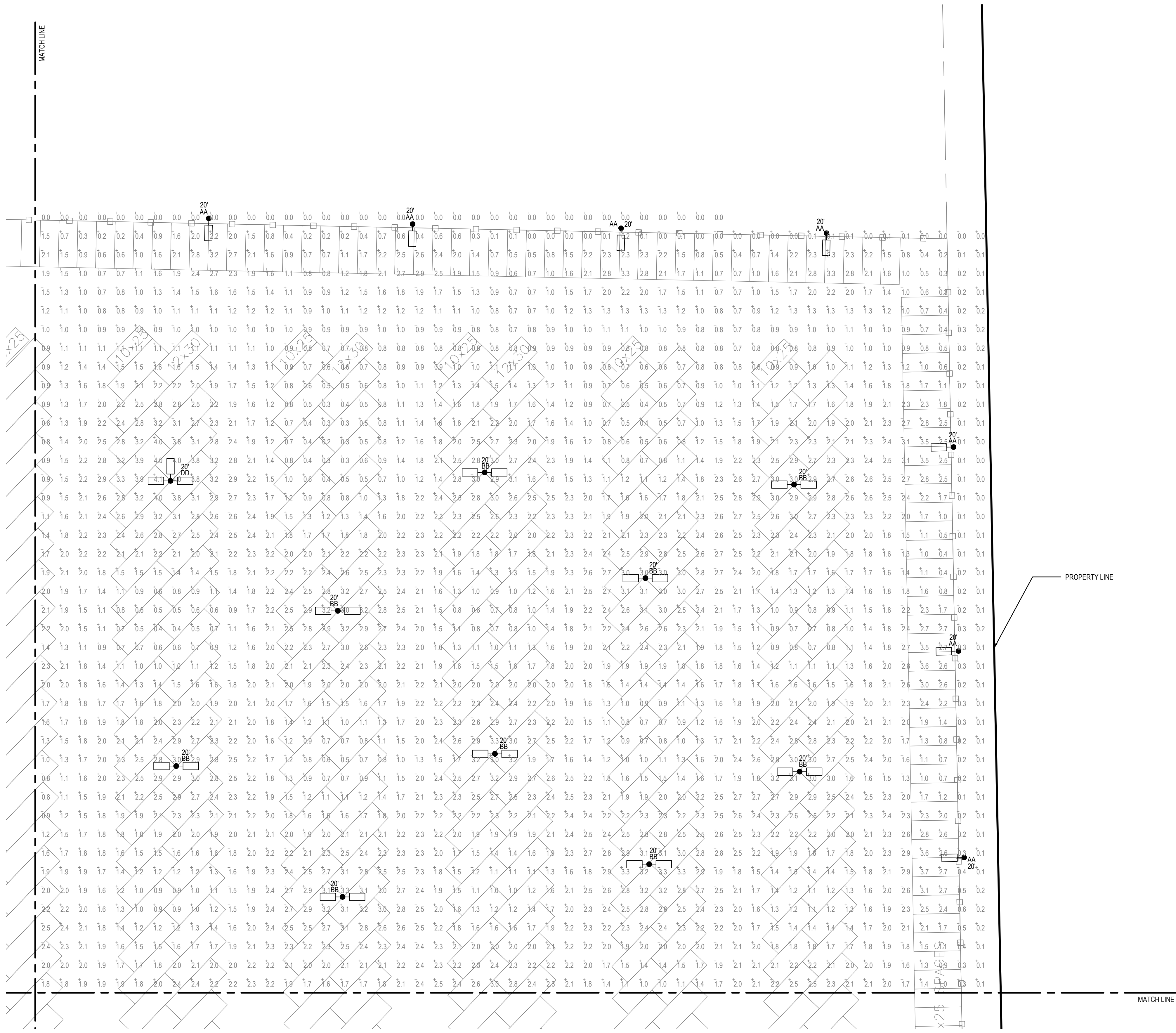
ISSUE HISTORY:

| NO. | DATE | DESCRIPTION |
|-----|------|-------------|
| | | |
| | | |
| | | |
| | | |
| | | |
| | | |
| | | |
| | | |
| | | |
| | | |
| | | |

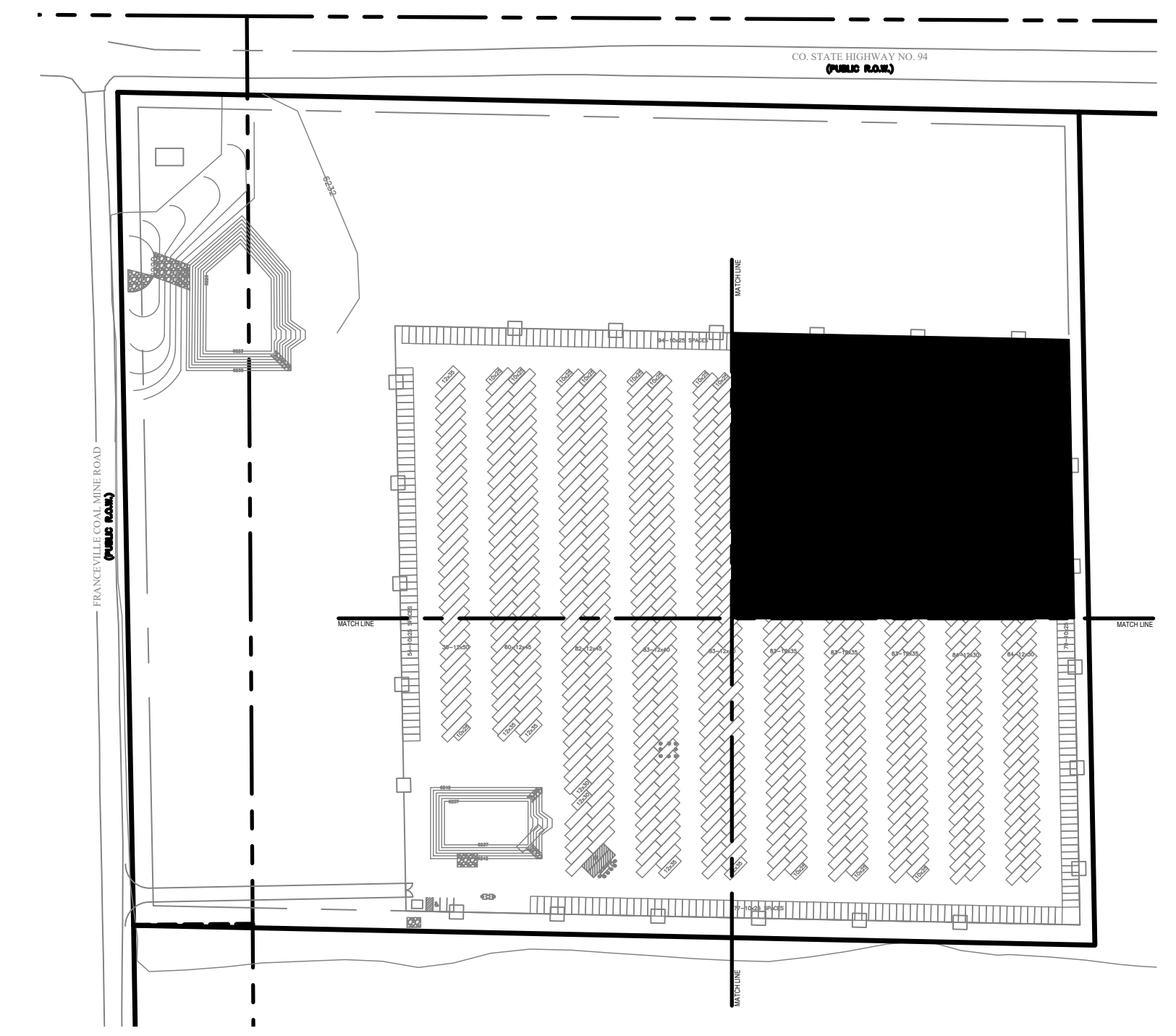
DRAWN BY MTC
CHECKED BY JJA
DATE 5/5/2023

DRAWING TITLE
PHOTOMETRIC PLAN

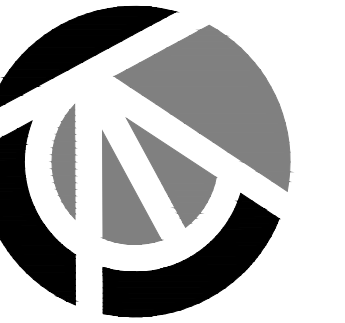
DRAWING NO.
DP-3



2 PARTIAL SITE PHOTOMETRIC PLAN
DP-3 SCALE: 1"=30'-0"



1 KEY PLAN
DP-3 SCALE: N/A



Chavez Tiffany & Ayers
Engineering Corporation
611 North Nevada Avenue
Colorado Springs, Colorado 80903
P (719) 636-0021
matt@ctaengcorp.com

ABTR STORAGE
PHOTOMETRIC PLAN
415 N. FRANCEVILLE COAL MINE RD
COLORADO SPRINGS, COLORADO

OWNER: Mike Jacobson
719-235-8195
Mike@FlyingHorseRealty.com

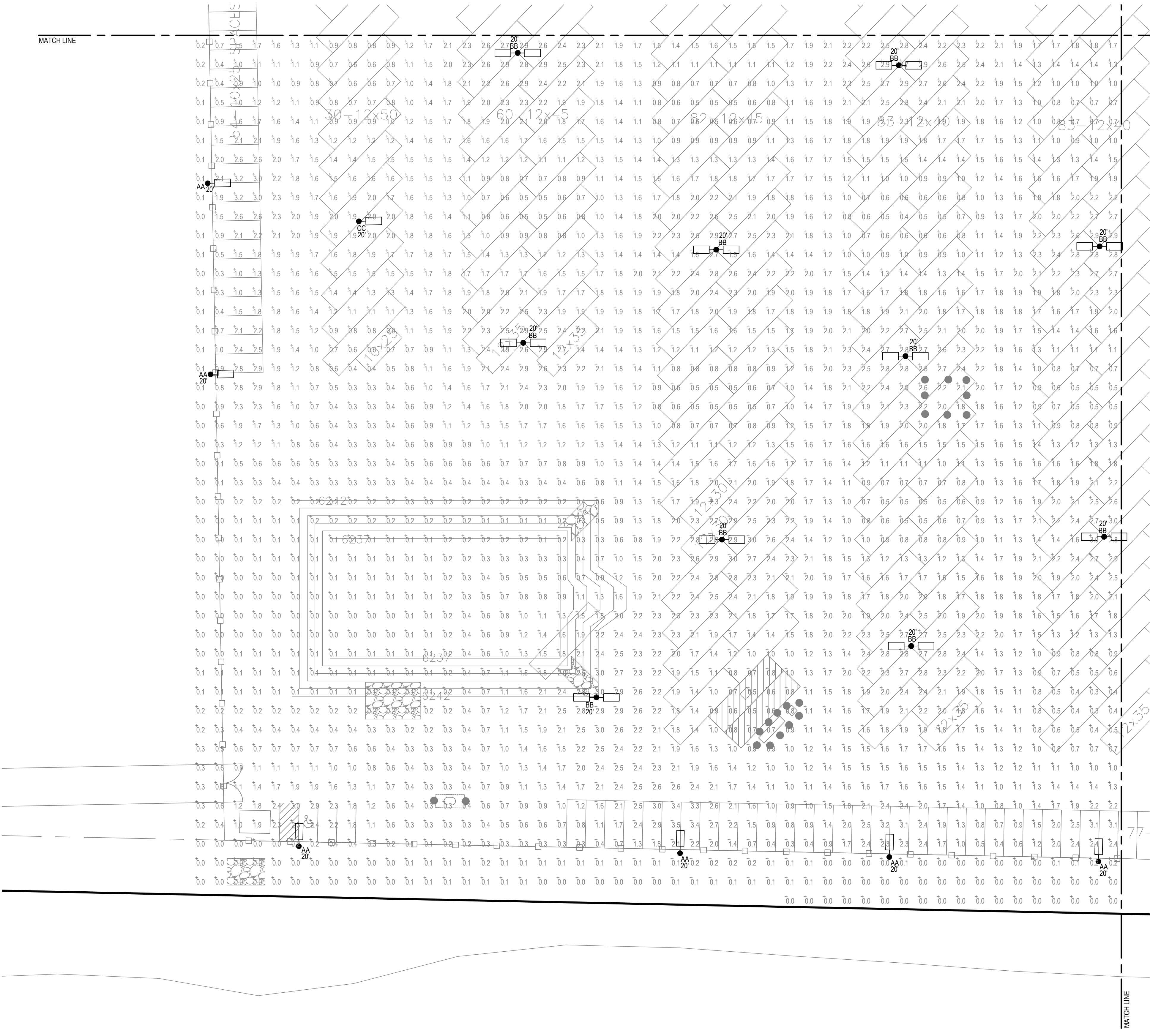
ISSUE HISTORY:

| NO. | DATE | DESCRIPTION |
|-----|------|-------------|
| | | |
| | | |
| | | |
| | | |
| | | |

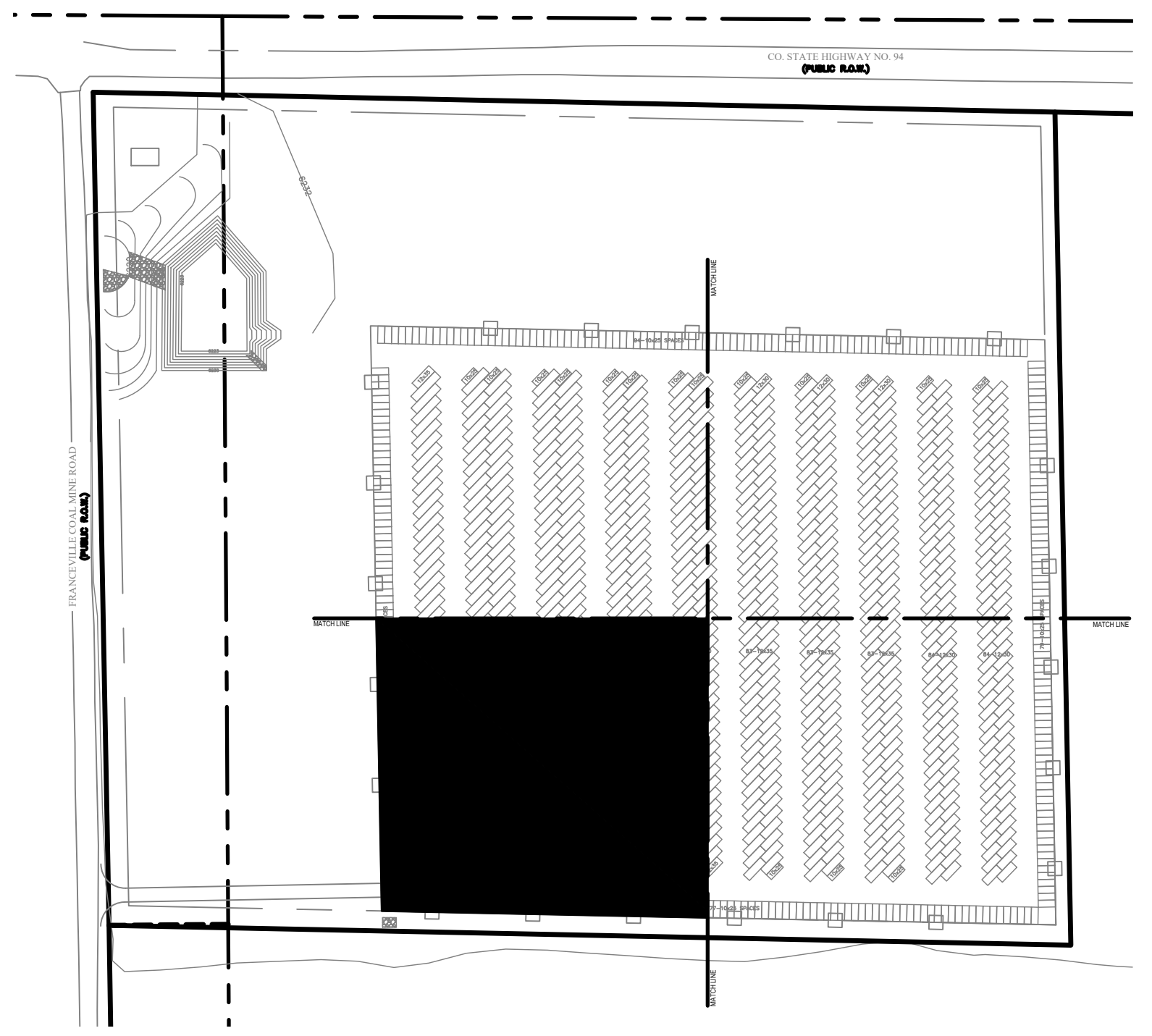
DRAWN BY: MTC
CHECKED BY: JJA
DATE: 5/5/2023

DRAWING TITLE
PHOTOMETRIC PLAN

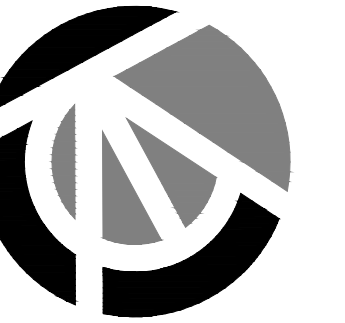
DRAWING NO.
DP-4



2 PARTIAL SITE PHOTOMETRIC PLAN
DP-4 SCALE: 1"=30'-0"



1 KEY PLAN
DP-4 SCALE: N/A



Chavez Tiffany & Ayers
Engineering Corporation

611 North Nevada Avenue
Colorado Springs, Colorado 80903
P (719)636-0021
mat@ctaengcorp.com

**ABTR STORAGE
PHOTOMETRIC PLAN**
415 N. FRANCEVILLE COAL MINE RD
COLORADO SPRINGS, COLORADO

OWNER: Mike Jacobson
719-235-8195
Mike@FlyingHorseRealty.com

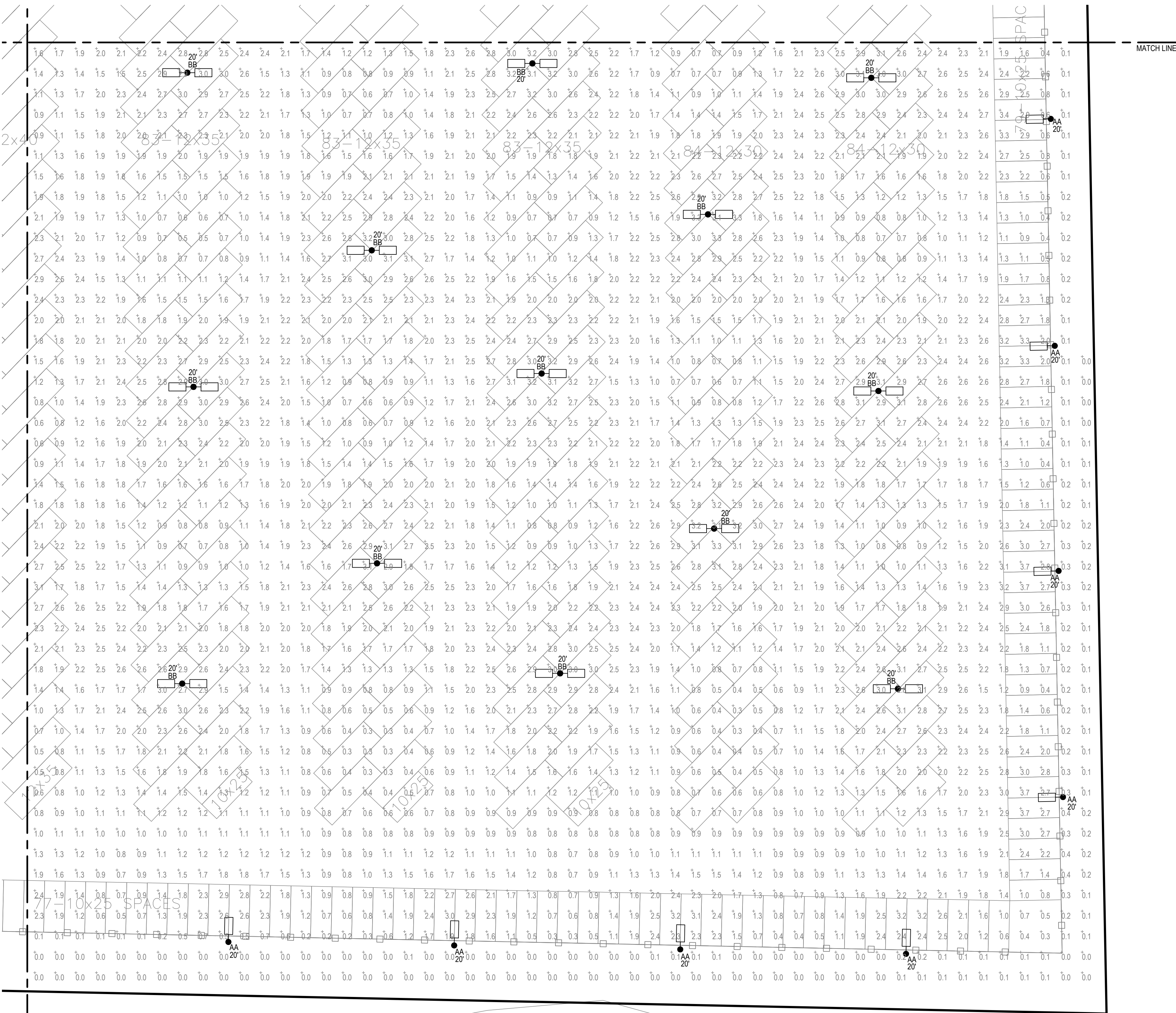
ISSUE HISTORY:

| NO. | DESCRIPTION | DATE |
|-----|-------------|------|
| | | |
| | | |
| | | |
| | | |
| | | |

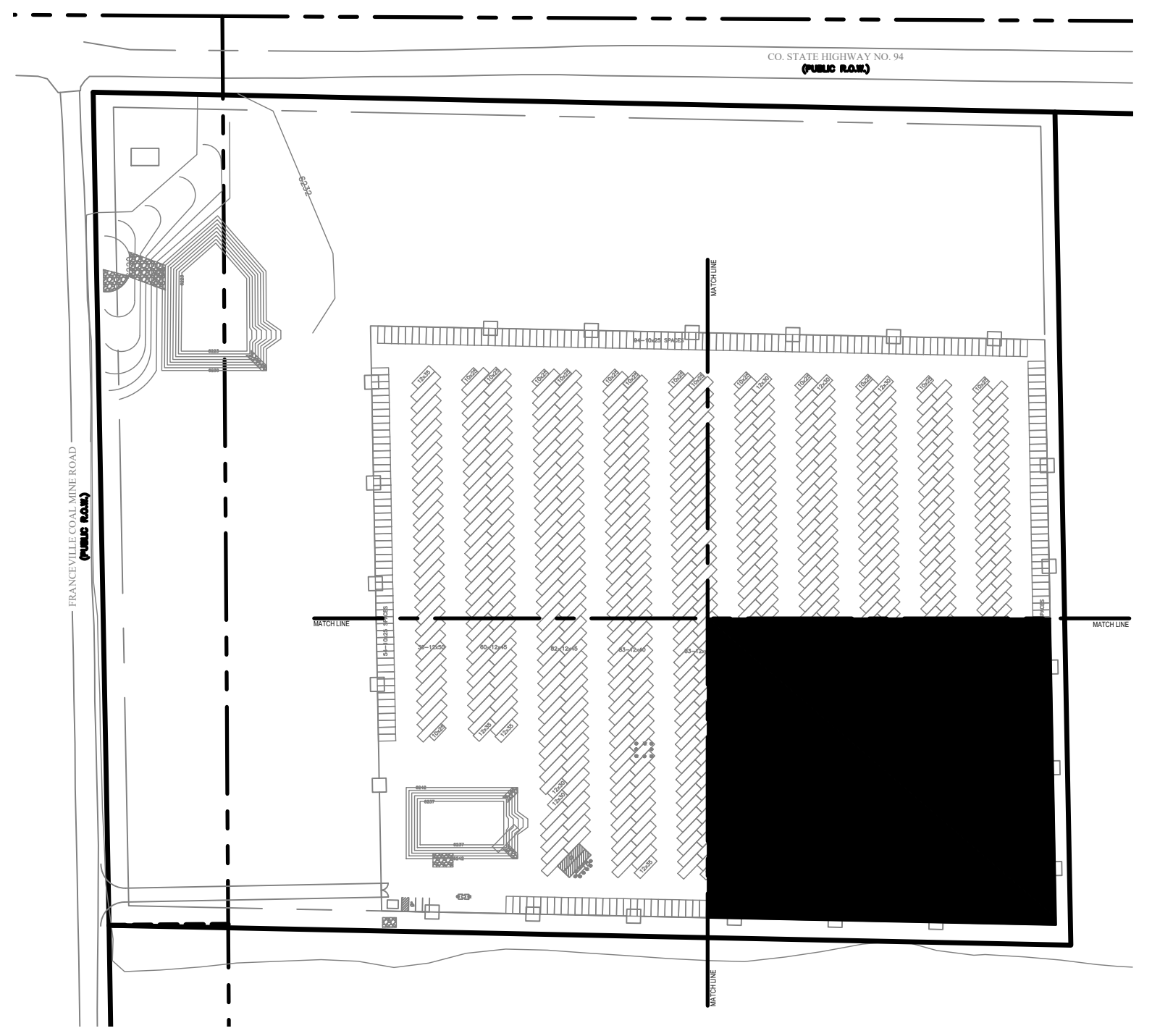
DRAWN BY: MTC
CHECKED BY: JJA
DATE: 5/5/2023

DRAWING TITLE:
PHOTOMETRIC PLAN

DRAWING NO.
DP-5



2 PARTIAL SITE PHOTOMETRIC PLAN
DP-5 SCALE: 1"=30'-0"



1 KEY PLAN
DP-5 SCALE: N/A