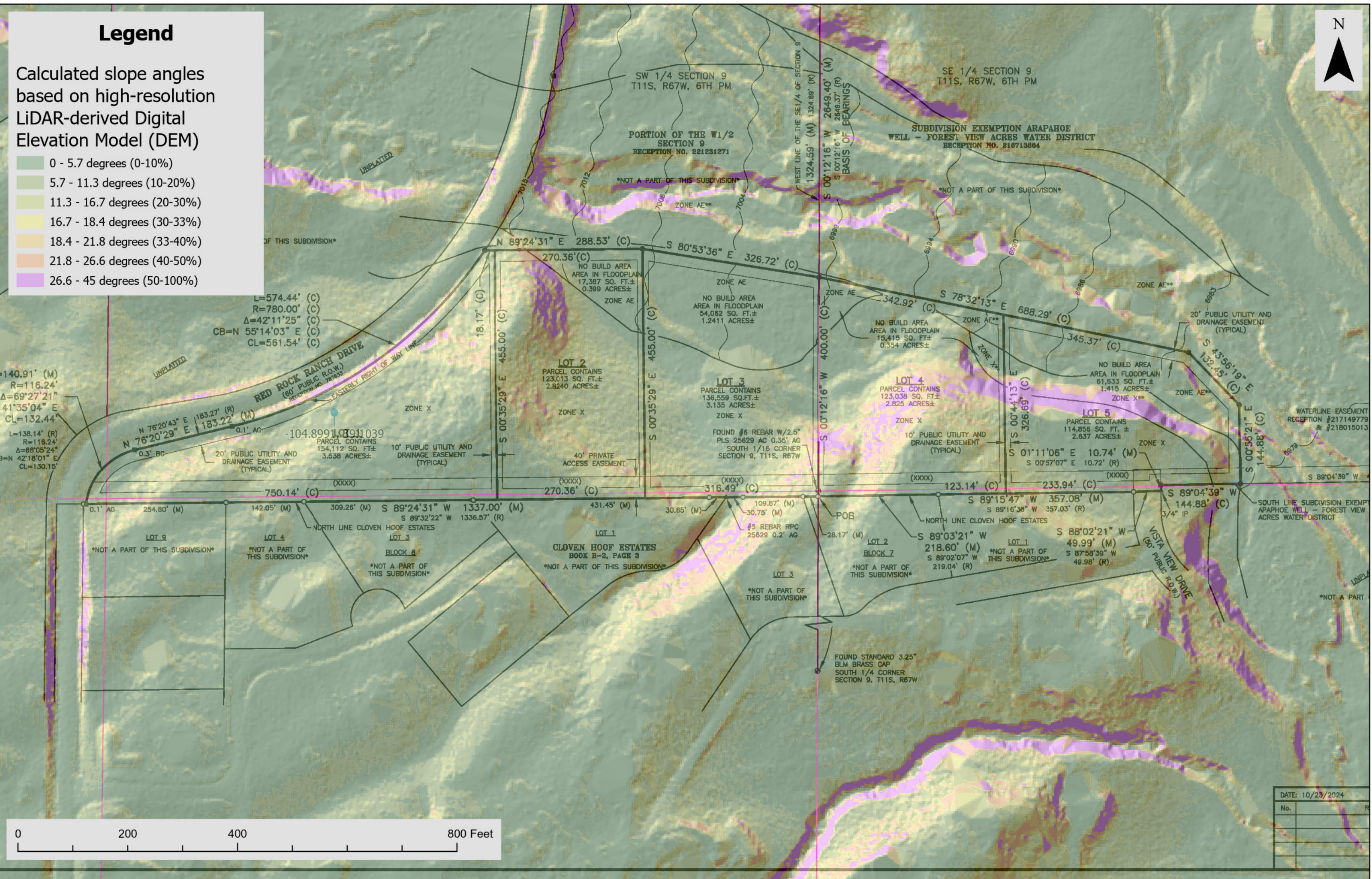


Legend

Calculated slope angles
based on high-resolution
LiDAR-derived Digital
Elevation Model (DEM)

- 0 - 5.7 degrees (0-10%)
- 5.7 - 11.3 degrees (10-20%)
- 11.3 - 16.7 degrees (20-30%)
- 16.7 - 18.4 degrees (30-33%)
- 18.4 - 21.8 degrees (33-40%)
- 21.8 - 26.6 degrees (40-50%)
- 26.6 - 45 degrees (50-100%)



DATE: 10/23/2024		
No.		R