




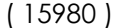

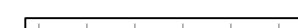


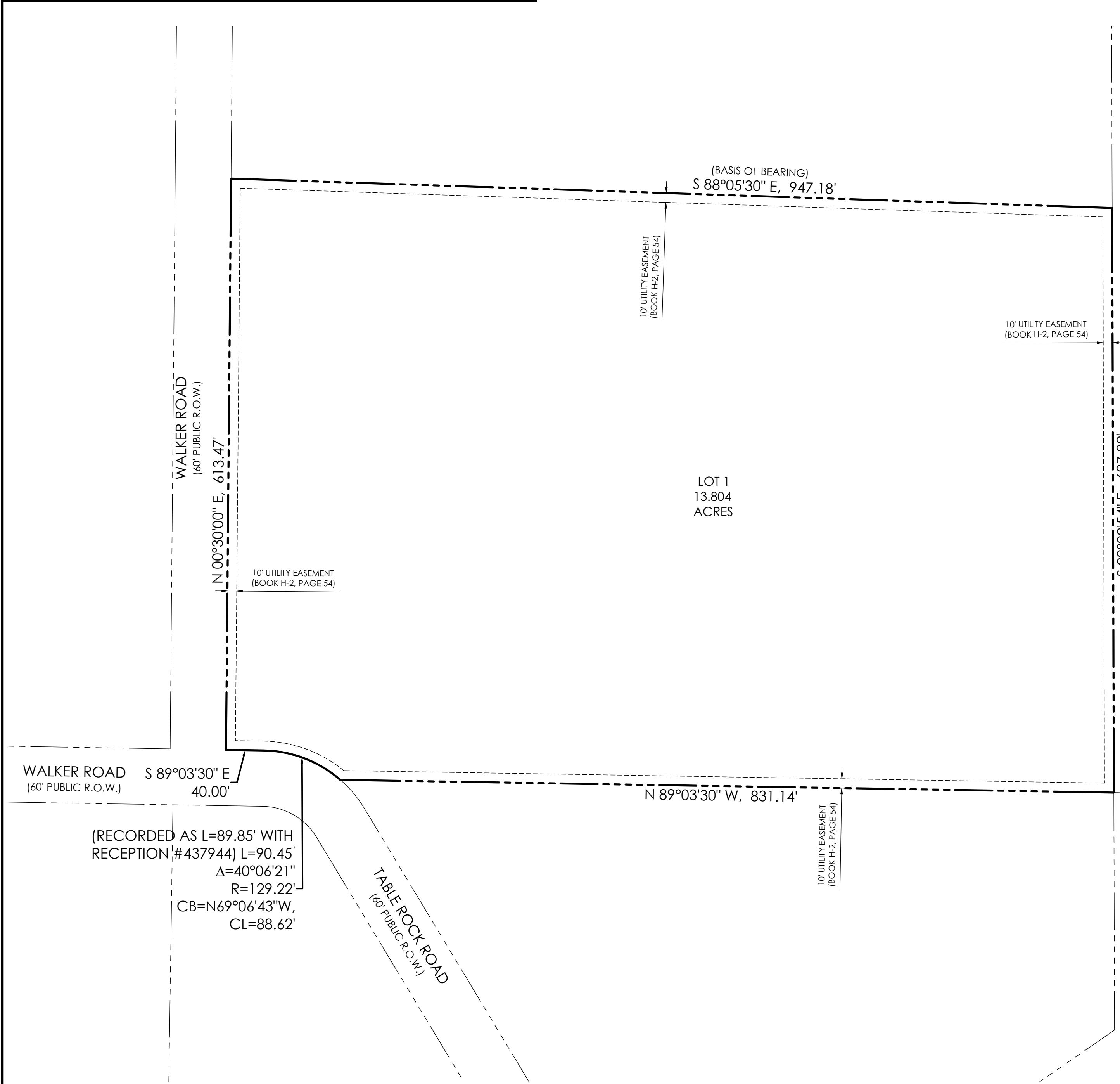
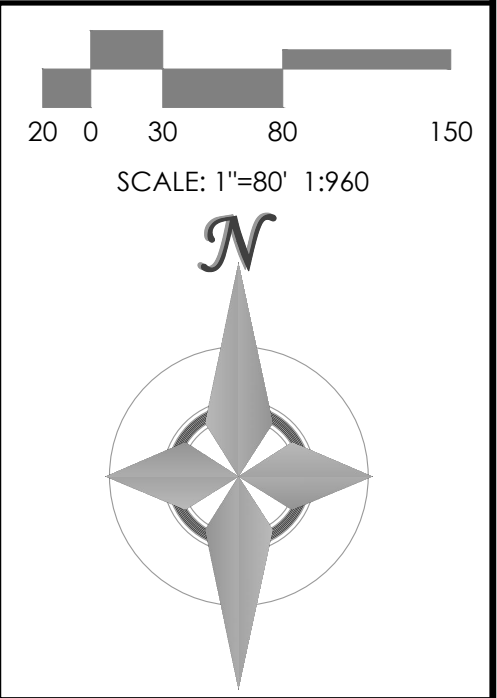


# HIGH FOREST ESTATES SUBDIVISION FILING NO. 1

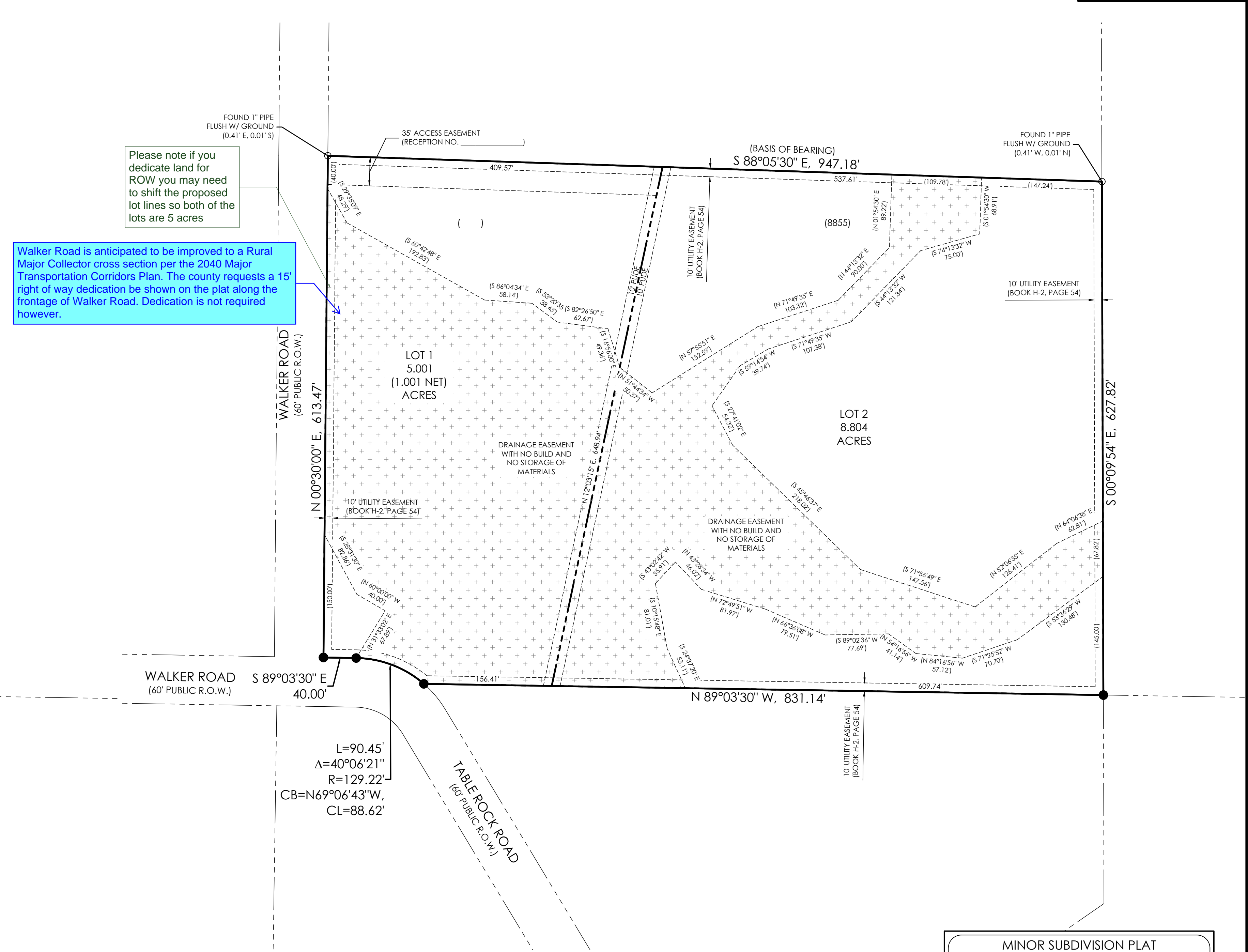
A REPLAT OF LOT 1, BLOCK 7, WILLOW SPRINGS ESTATES  
 LOCATED IN THE SOUTH HALF OF THE SOUTHWEST QUARTER OF THE  
 SOUTHWEST QUARTER OF SECTION 10, TOWNSHIP 11 SOUTH, RANGE 65  
 WEST OF THE 6<sup>TH</sup> PRINCIPAL MERIDIAN IN EL PASO COUNTY, COLORADO

## LEGEND

-  PROPOSED SUBDIVISION BOUNDARY LINE
-  PROPOSED LOT LINE
-  SECTION LINE
-  FOUND CORNER AS SHOWN
-  SET #5 REBAR W/ ALUMINUM CAP MARKED "POLARIS, PLS 27605" FLUSH WITH THE GROUND
-  ADDRESS NUMBER
-  PUBLIC UTILITY AND DRAINAGE EASEMENT
-  DRAINAGE EASEMENT WITH NO BUILD AND NO STORAGE OF MATERIALS



"AS PLATTED"



"AS REPLATTED"

MINOR SUBDIVISION PLAT  
 HIGH FOREST ESTATES SUBDIVISION  
 FILING NO. 1

**MVE, INC.**  
 ENGINEERS SURVEYORS

1903 LeBarry Street, Suite 300  
 Colorado Springs, CO 80909  
 719.635.5736 www.mvecivil.com

MVE PROJECT:  
61188  
 MVE DRAWING:  
61188-PLAT-PS  
 DATE:  
MARCH 24, 2023  
 SHEET:  
2 OF 2

PCD FILE #