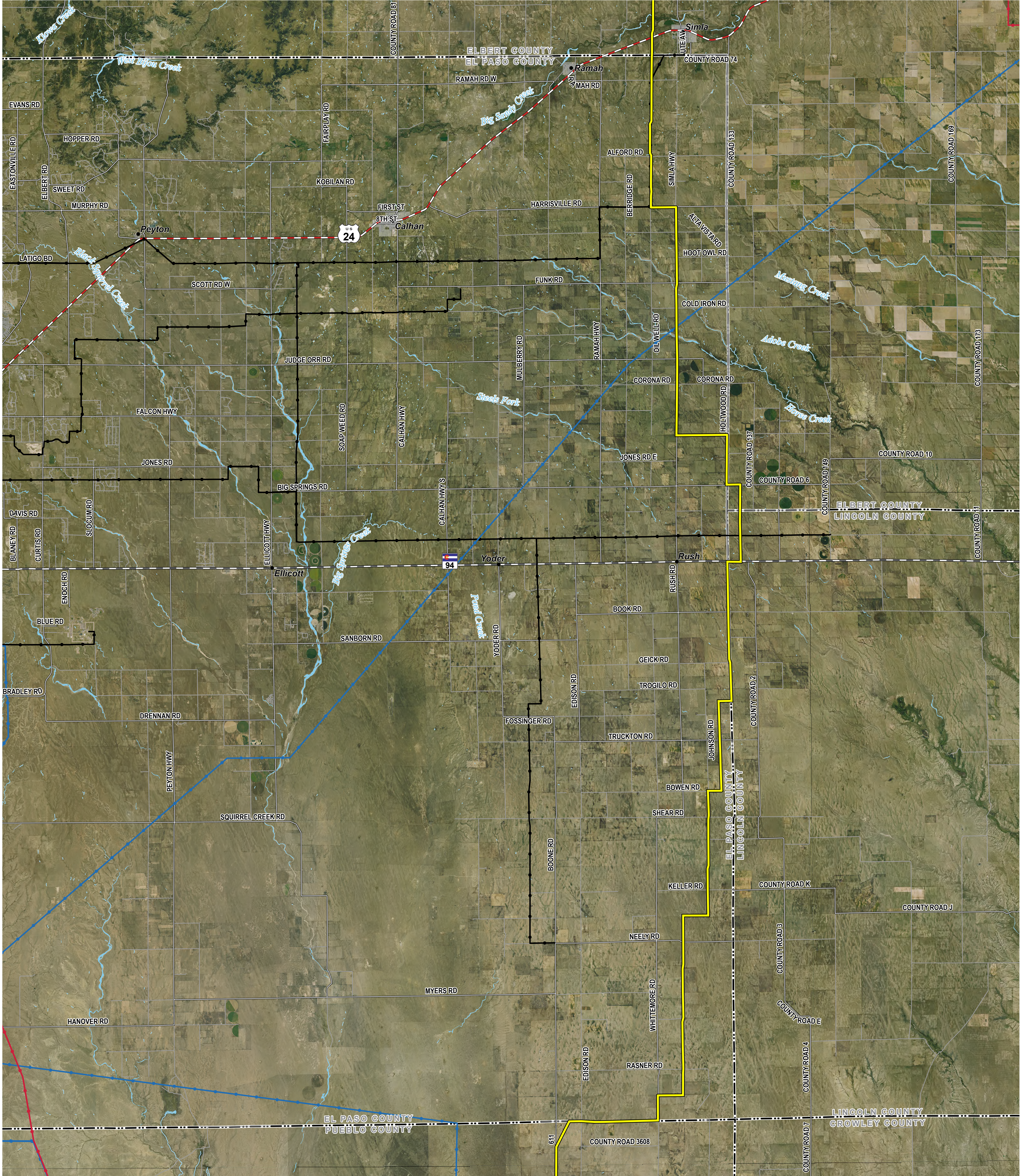


**ATTACHMENT N: EXISTING TRANSMISSION LINE MAP**

# COLORADO'S POWER PATHWAY



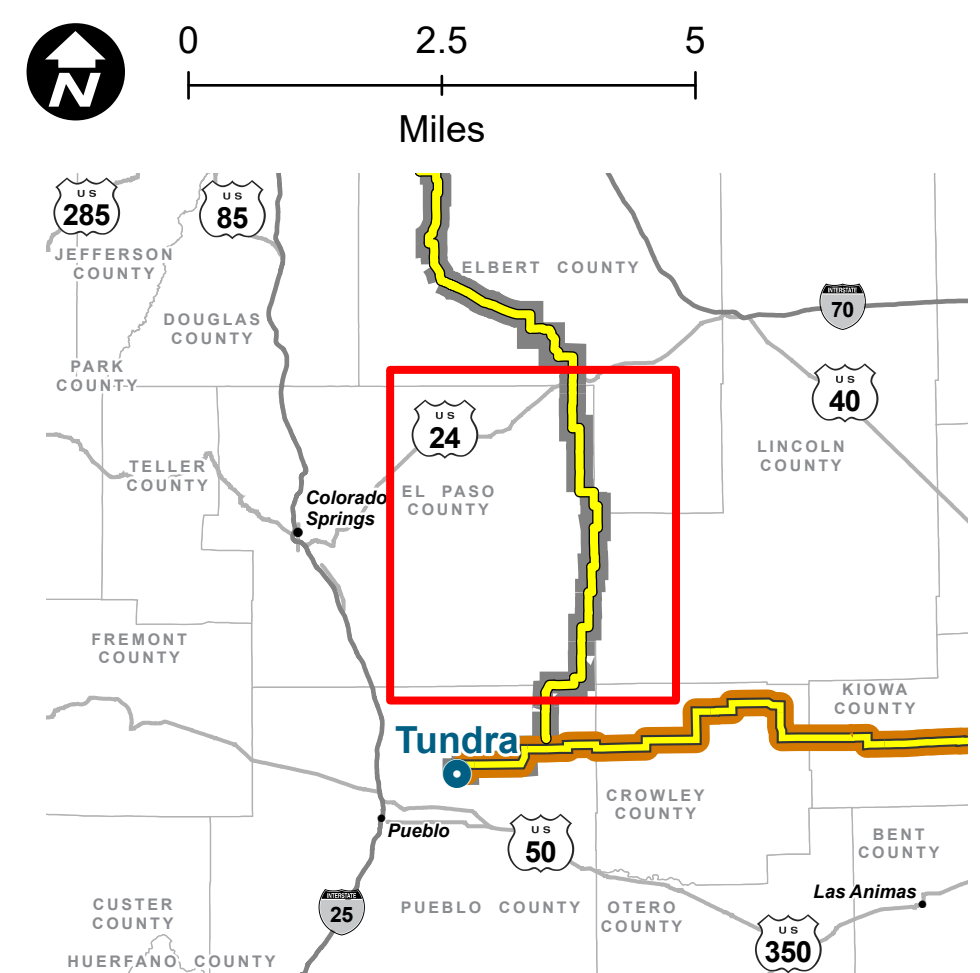
- Legend**
- Proposed Transmission Route
  - Boundary**  
(CDOT 2021, DOLA 2021)
  - Municipal Boundary
  - County
  - State Border
  - Transportation**  
(CDOT 2021, BTS 2020)
  - U.S. Highway
  - State Highway
  - Local Road

**Hydrology**  
(NHD 2020)

- Perennial Stream
- Waterbody

**Existing Transmission Line**  
(HIFLD 2023)

- 115kV
- 230kV
- 345kV



**PRELIMINARY, SUBJECT TO CHANGE**  
The information contained herein is believed to be accurate and suitable for limited internal use only. Xcel Energy/Public Service Company of Colorado makes no warranty as to the accuracy or suitability of any information contained herein for use by third parties. The accuracy of this map and the information depicted should be verified prior to use. The user shall assume all risk and responsibility for any and all damages, including consequential damages, which may arise from the user's reliance on this information.

Revised: 2/22/2024 | NOT FOR CONSTRUCTION

Path: \\cscs706g\jst1\1CES\Projects\IDEN\1163\_0039\_CO\_Pathway\_Permit\GIS\Layouts\Permitting\El\_Paso\_Co\El\_Paso\_Co\_Permit.aprx

## El Paso County Existing Transmission Lines