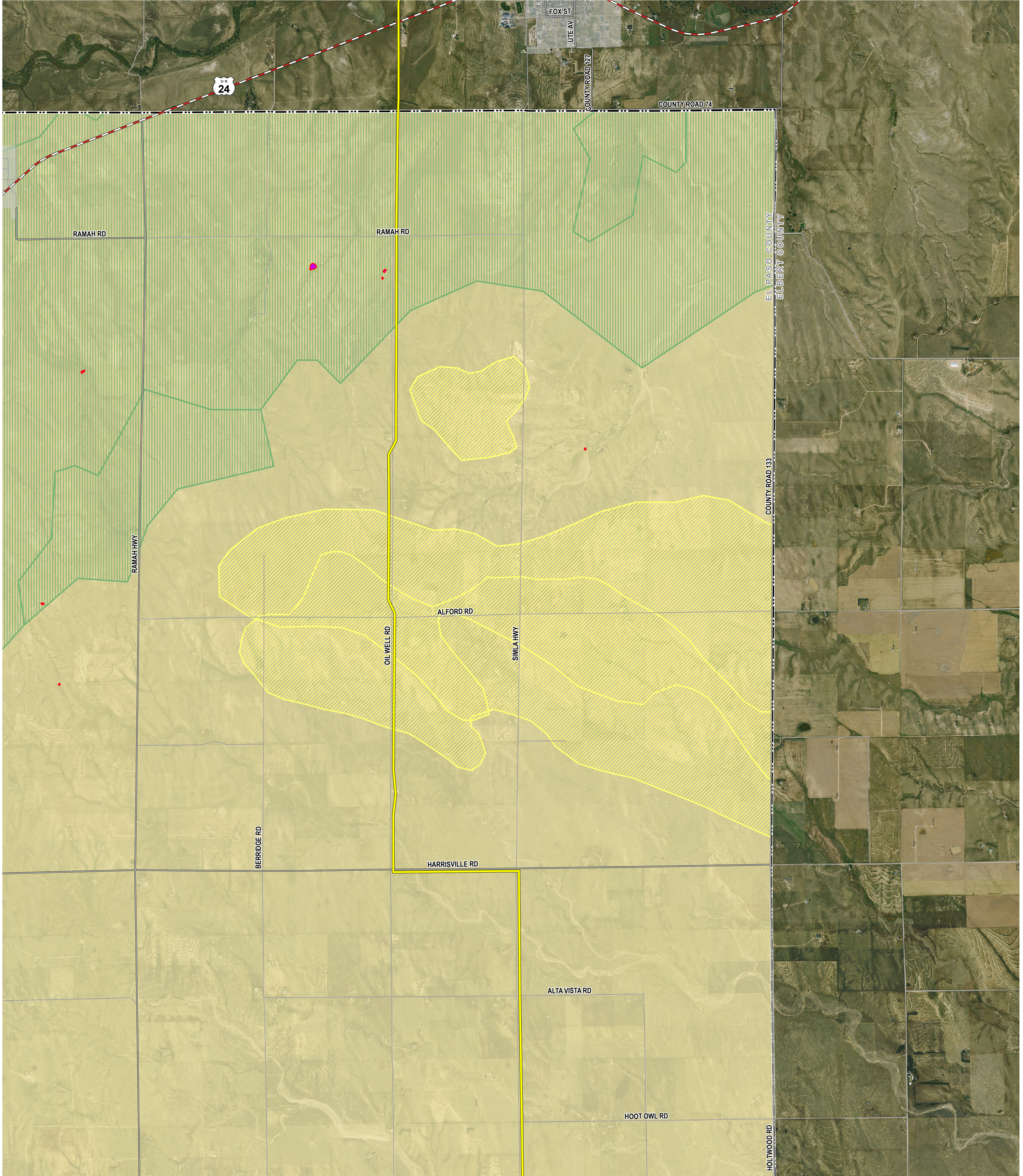


**ATTACHMENT G: SOILS, GEOLOGIC, AND NATURAL HAZARD  
AREAS MAP**

# COLORADO'S POWER PATHWAY



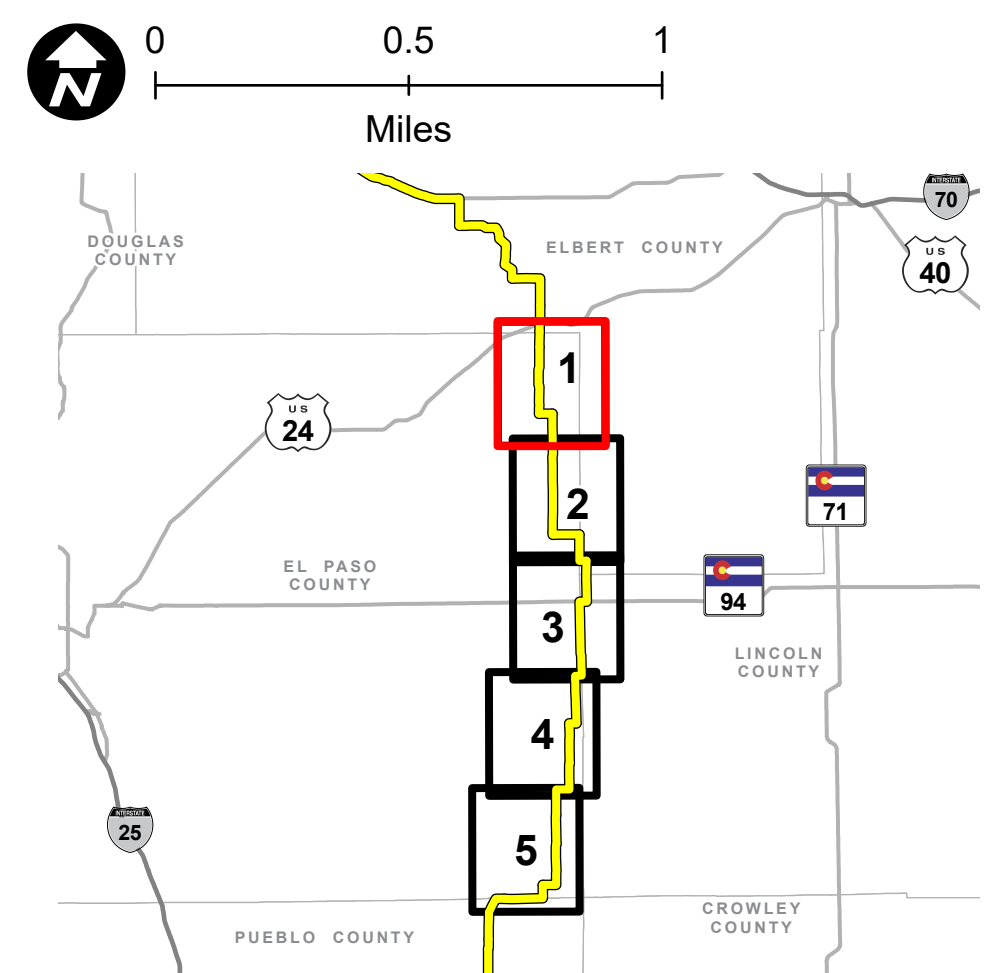
## Legend

- Proposed Transmission Route
- Boundary**  
(CDOT 2021, DOLA 2021)
- County
- Municipal Boundary
- Transportation**  
(CDOT 2021, BTS 2020)
- U.S. Highway
- Major Road
- Local Road

- Soil Hazards**  
(CGS 2024)
- Eolian (Wind Blown) Deposits
- Dune & Sheet Sand Deposits
- Cretaceous & Tertiary Formations

- Geologic Hazards**  
(CGS 2024)
- Landslide
- Wildfire Hazard Potential**  
(USDA 2024)
- Very High
- Very Low

- Hydrology**  
(NHD 2023)
- Perennial Stream
- Intermittent Stream
- Waterbody

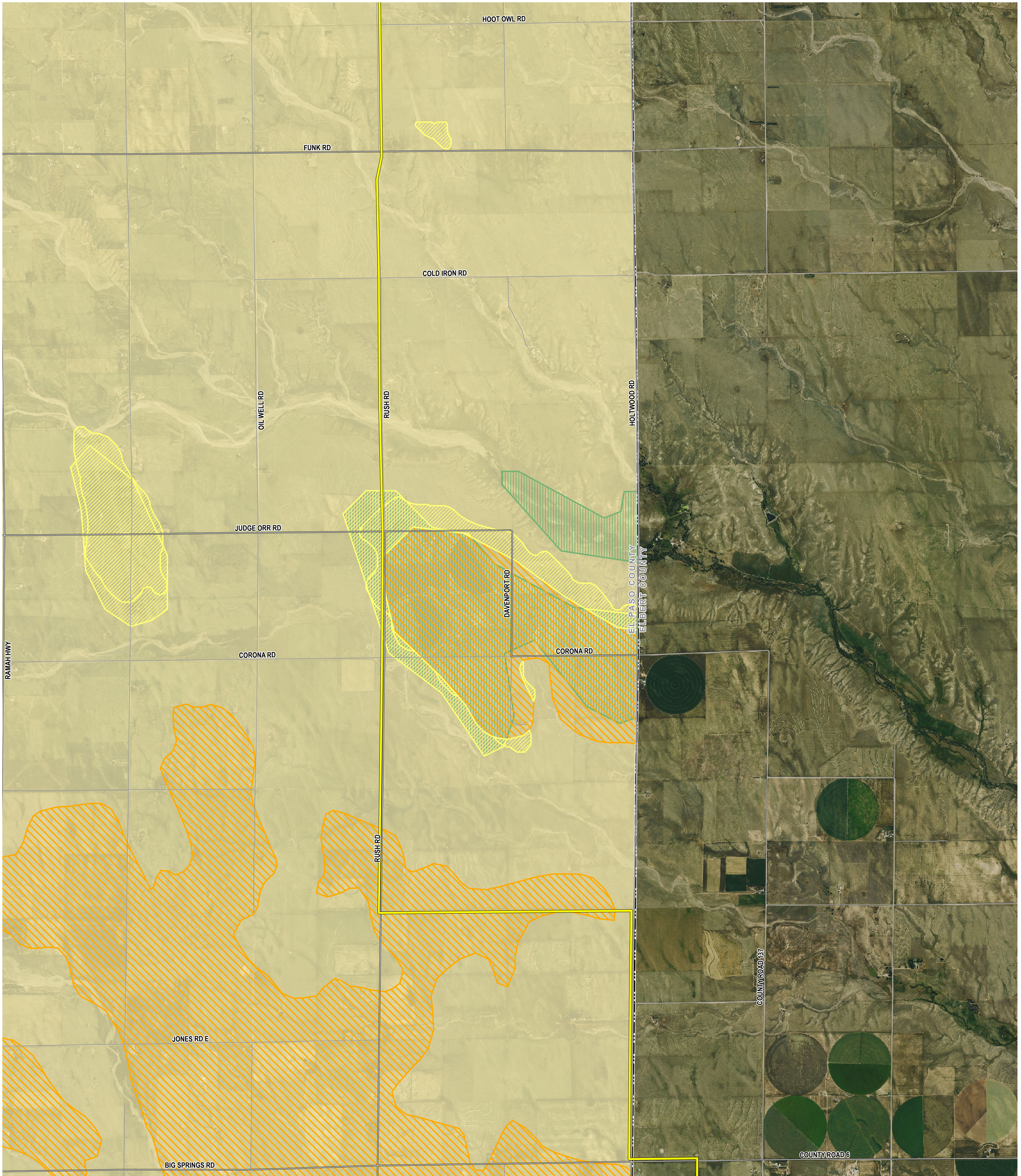


**PRELIMINARY, SUBJECT TO CHANGE**  
The information contained herein is believed to be accurate and suitable for limited internal uses only. Xcel Energy/Public Service Company of Colorado makes no warranty as to the accuracy or suitability of any information contained herein for use by third parties. The accuracy of this map and the information depicted should be verified prior to use. The user shall assume all risk and responsibility for any and all damages, including consequential damages, which may arise from the user's reliance on this information.

Revised: 3/27/2024 | NOT FOR CONSTRUCTION

Path: Z:\Projects\IDEN\1163\_0039\_CO\_Pathway\_Permit\GIS\Layouts\Permitting\El\_Paso\_Co\El\_Paso\_Co\_Permit.aprx

# COLORADO'S POWER PATHWAY



## Legend

Proposed Transmission Route

### Boundary (CDOT 2021, DOLA 2021)

- County
- Municipal Boundary

### Transportation (CDOT 2021, BTS 2020)

- U.S. Highway
- Major Road
- Local Road

### Soil Hazards (CGS 2024)

- Eolian (Wind Blown) Deposits
- Dune & Sheet Sand Deposits
- Cretaceous & Tertiary Formations

### Geologic Hazards (CGS 2024)

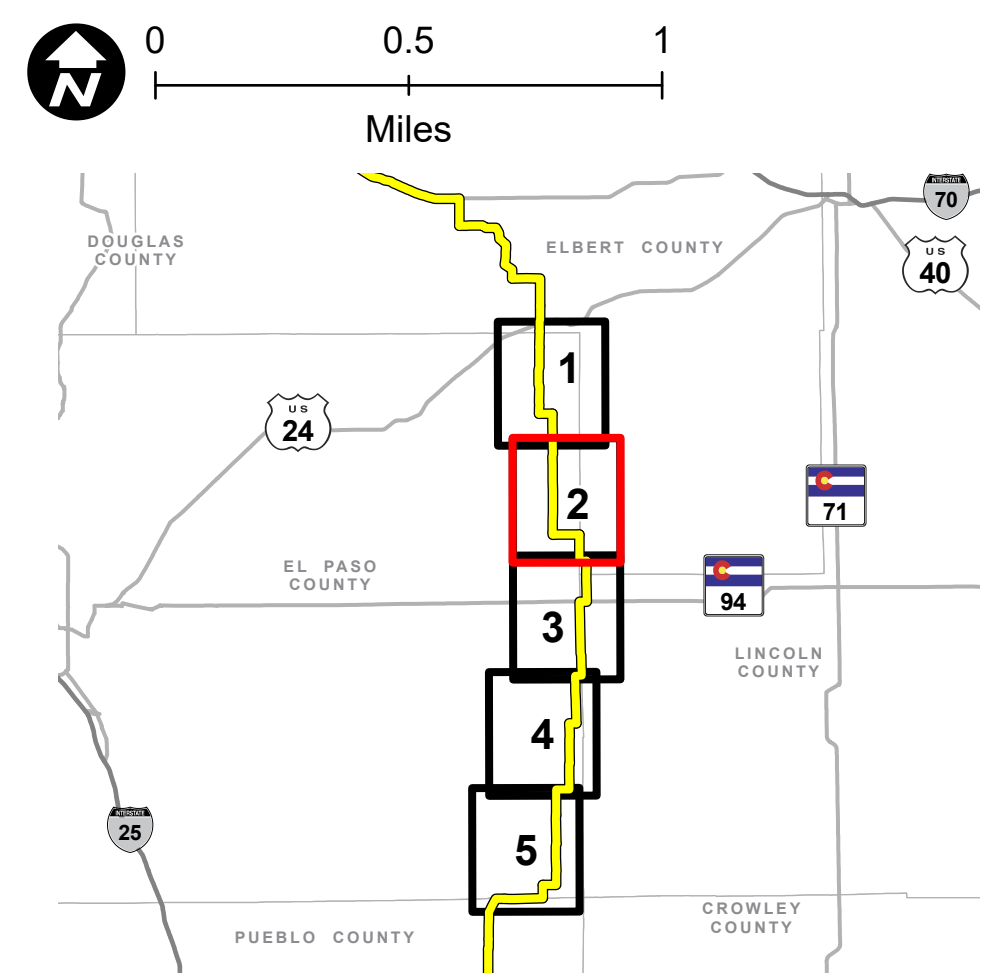
- Landslide

### Wildfire Hazard Potential (USDA 2024)

- Very High
- Very Low

### Hydrology (NHD 2023)

- Perennial Stream
- Intermittent Stream
- Waterbody

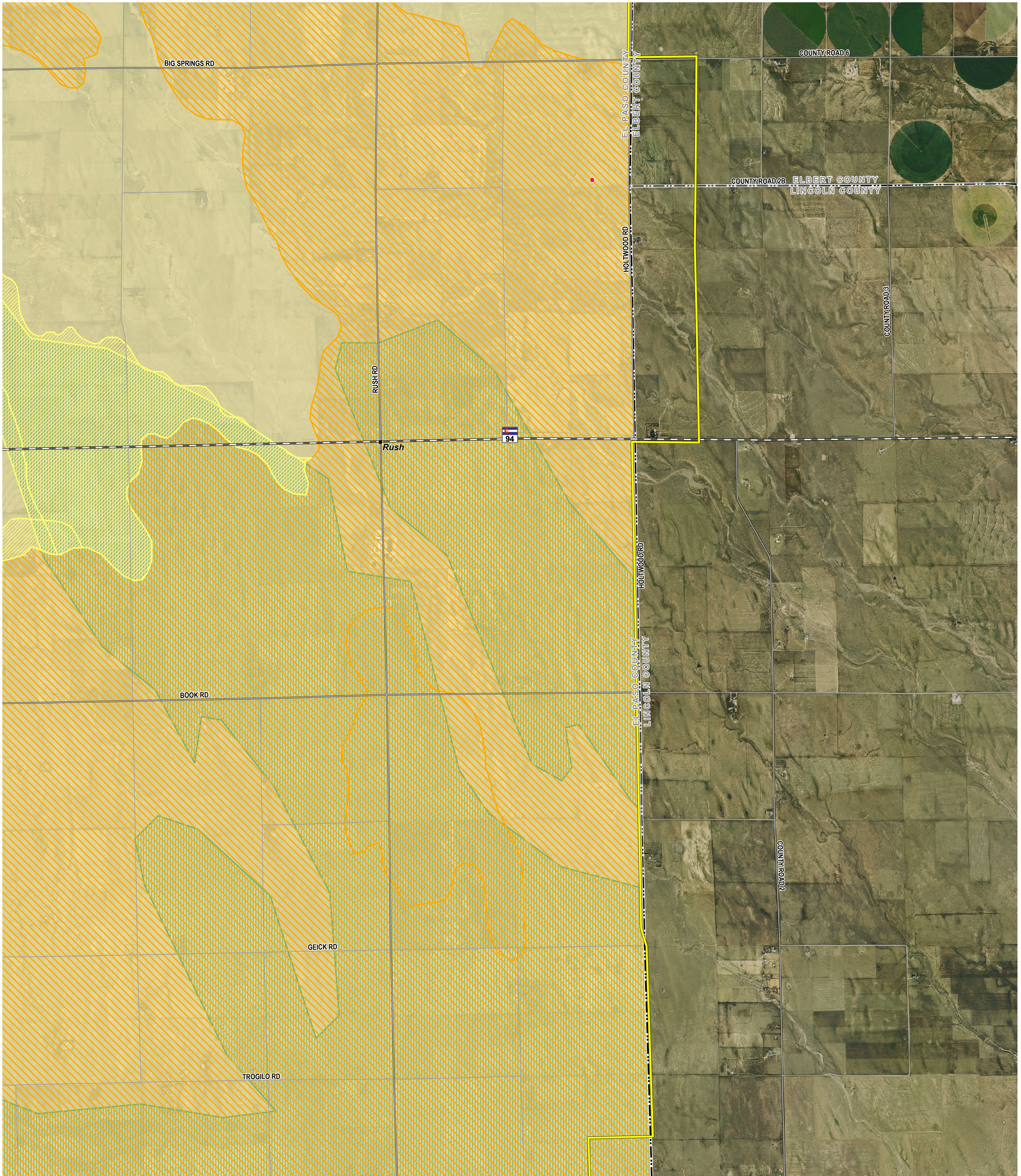


**PRELIMINARY, SUBJECT TO CHANGE**  
The information contained herein is believed to be accurate and suitable for limited internal uses only. Xcel Energy/Public Service Company of Colorado makes no warranty as to the accuracy or suitability of any information contained herein for use by third parties. The accuracy of this map and the information depicted should be verified prior to use. The user shall assume all risk and responsibility for any and all damages, including consequential damages, which may arise from the user's reliance on this information.

Revised: 3/27/2024 | NOT FOR CONSTRUCTION

Path: Z:\Projects\IDEN\1163\_0039\_CO\_Pathway\_Permit\GIS\Layouts\Permitting\El\_Paso\_Co\El\_Paso\_Co\_Permit.aprx

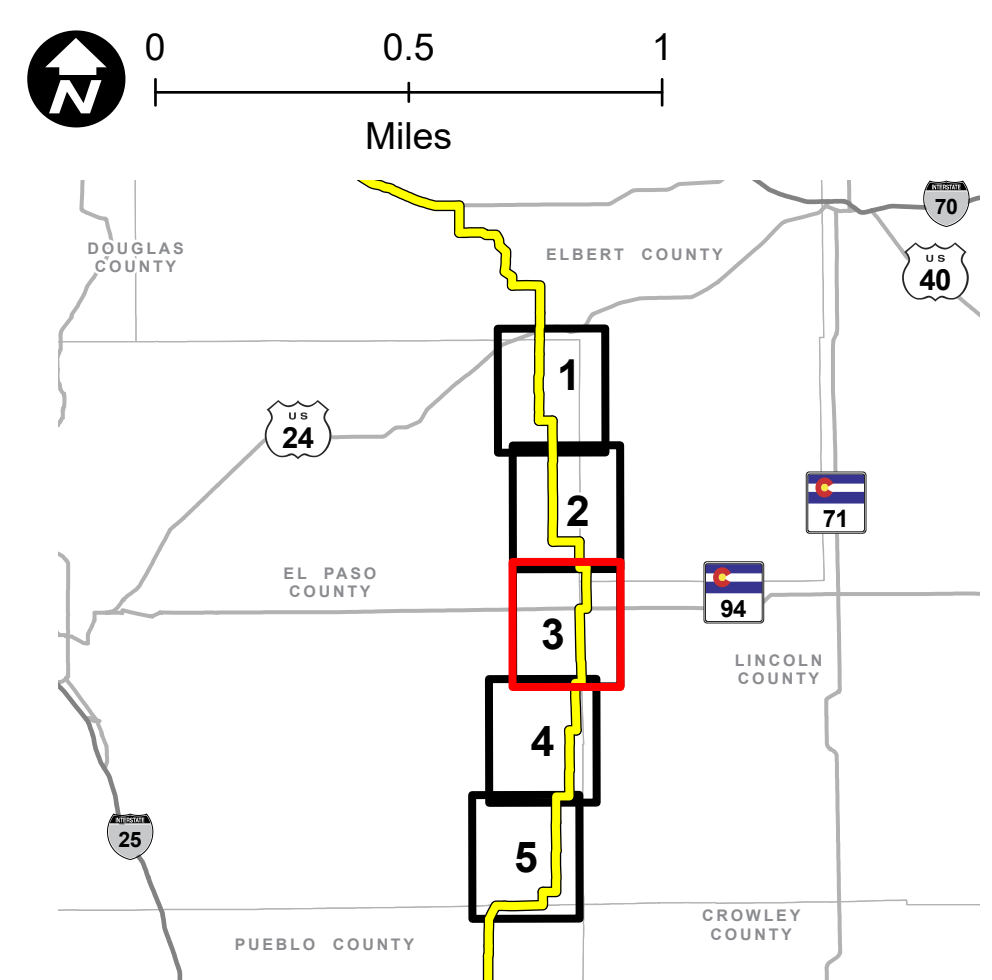
# COLORADO'S POWER PATHWAY



- Legend**
- Proposed Transmission Route
  - Boundary** (CDOT 2021, DOLA 2021)
    - County
    - Municipal Boundary
  - Transportation** (CDOT 2021, BTS 2020)
    - U.S. Highway
    - Major Road
    - Local Road

- Soil Hazards** (CGS 2024)
  - Eolian (Wind Blown) Deposits
  - Dune & Sheet Sand Deposits
  - Cretaceous & Tertiary Formations
- Geologic Hazards** (CGS 2024)
  - Landslide
- Wildfire Hazard Potential** (USDA 2024)
  - Very High
  - Very Low

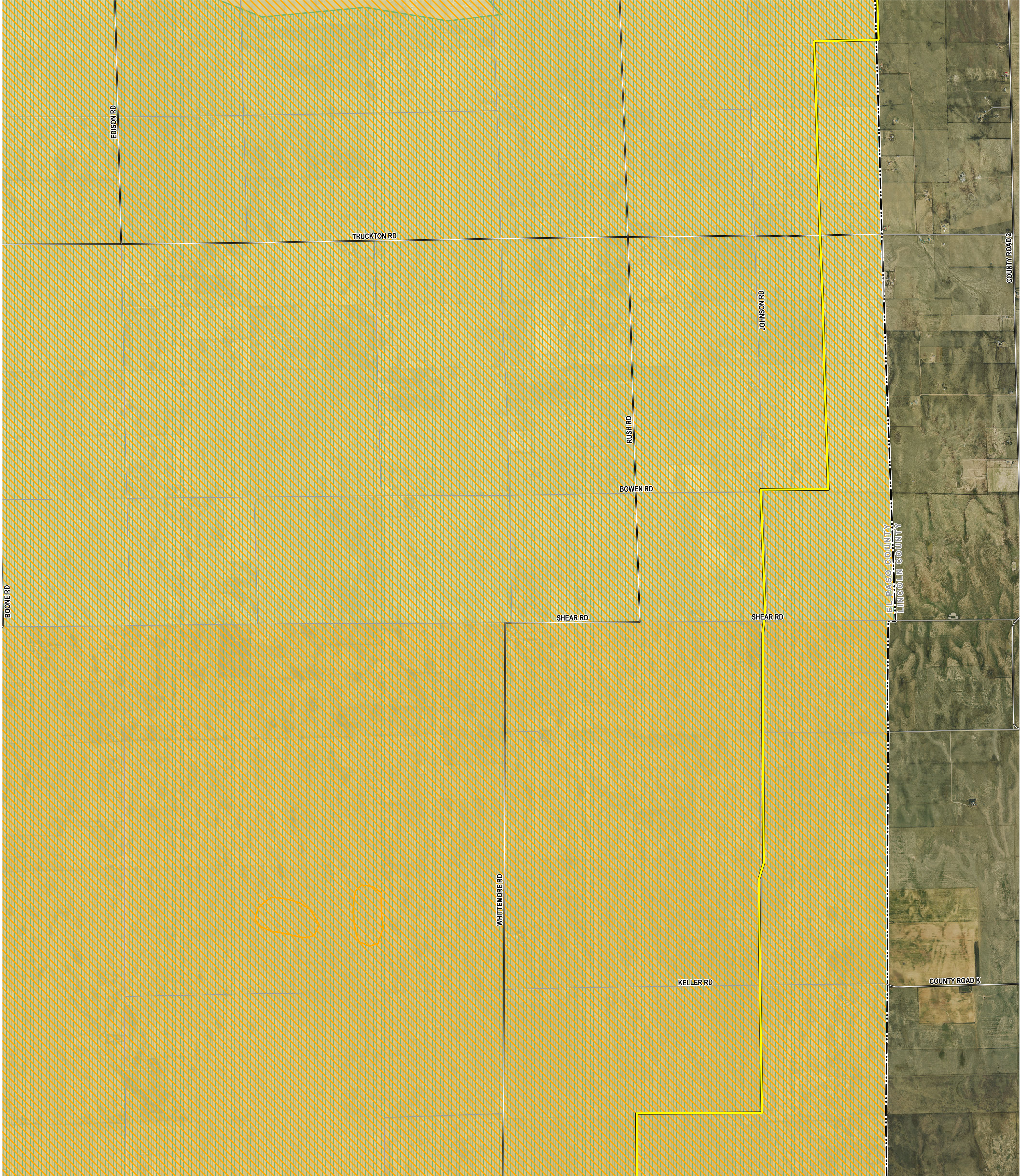
- Hydrology** (NHD 2023)
  - Perennial Stream
  - Intermittent Stream
  - Waterbody



**PRELIMINARY, SUBJECT TO CHANGE**  
 The information contained herein is believed to be accurate and suitable for limited internal uses only. Xcel Energy/Public Service Company of Colorado makes no warranty as to the accuracy or suitability of any information contained herein for use by third parties. The accuracy of this map and the information depicted should be verified prior to use. The user shall assume all risk and responsibility for any and all damages, including consequential damages, which may arise from the user's reliance on this information.

Revised: 3/27/2024 | NOT FOR CONSTRUCTION  
 Path: Z:\Projects\IDEN\1163\_0039\_CO\_Pathway\_Permit\GIS\Layouts\Permitting\El\_Paso\_Co\El\_Paso\_Co\_Permit.aprx

# COLORADO'S POWER PATHWAY

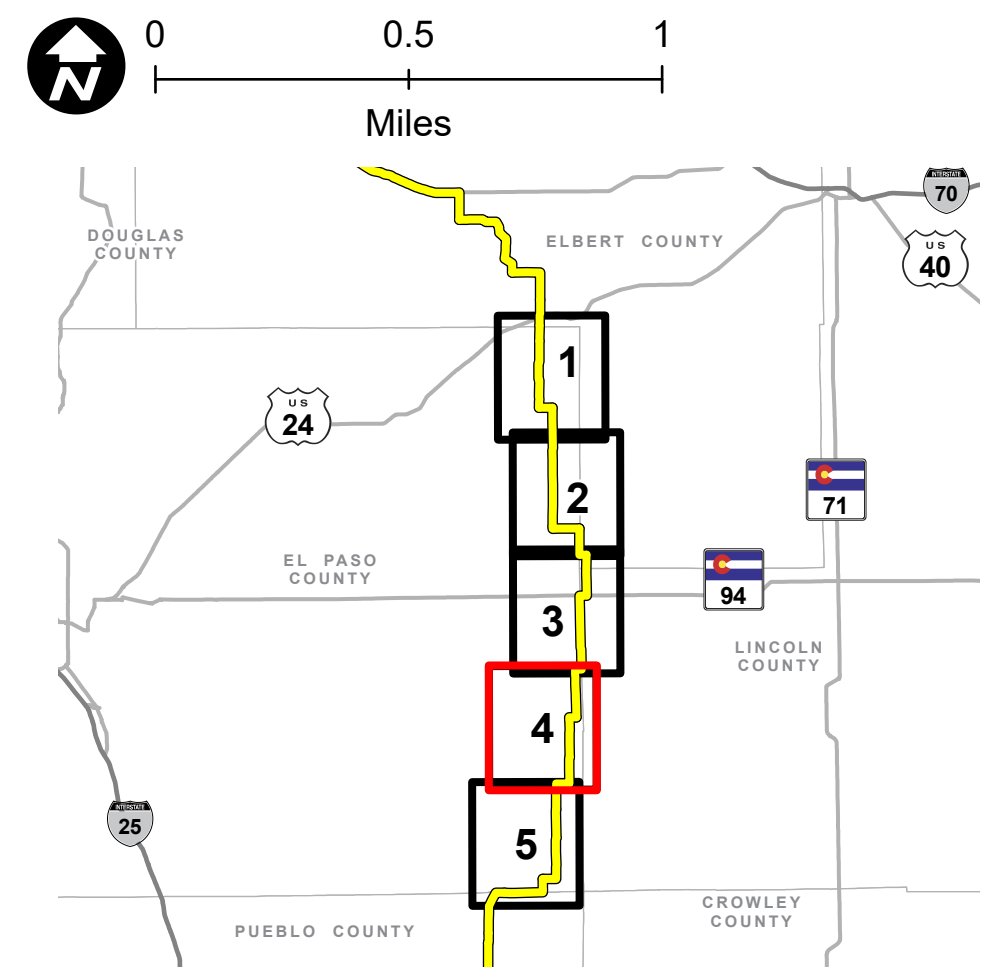


- Legend**
- Proposed Transmission Route
  - Boundary**  
(CDOT 2021, DOLA 2021)
  - County
  - Municipal Boundary
  - Transportation**  
(CDOT 2021, BTS 2020)
  - U.S. Highway
  - Major Road
  - Local Road

- Soil Hazards**  
(CGS 2024)
- Eolian (Wind Blown) Deposits
  - Dune & Sheet Sand Deposits
  - Cretaceous & Tertiary Formations

- Geologic Hazards**  
(CGS 2024)
- Landslide
- Wildfire Hazard Potential**  
(USDA 2024)
- Very High
  - Very Low

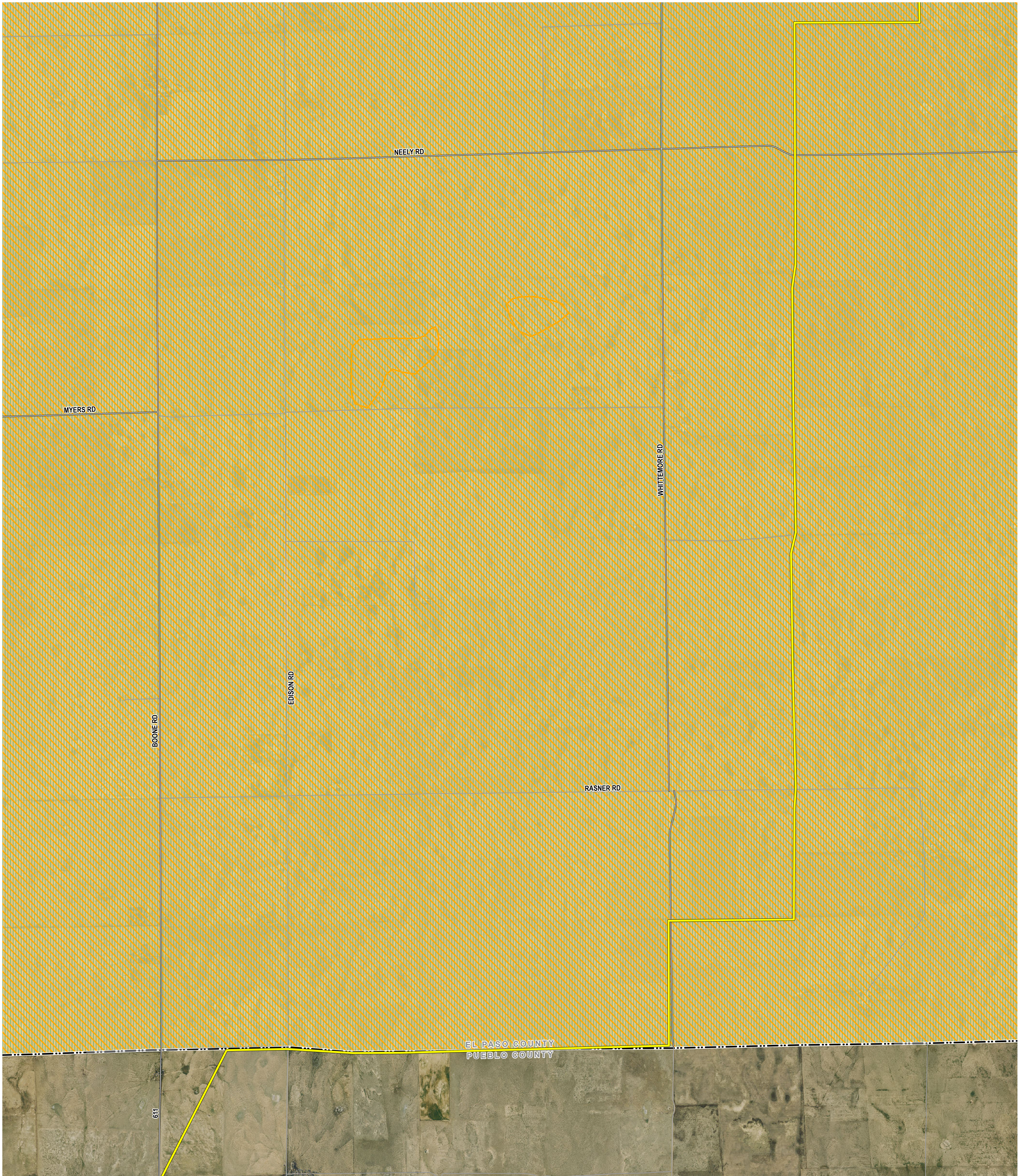
- Hydrology**  
(NHD 2023)
- Perennial Stream
  - Intermittent Stream
  - Waterbody



**PRELIMINARY, SUBJECT TO CHANGE**  
The information contained herein is believed to be accurate and suitable for limited internal uses only. Xcel Energy/Public Service Company of Colorado makes no warranty as to the accuracy or suitability of any information contained herein for use by third parties. The accuracy of this map and the information depicted should be verified prior to use. The user shall assume all risk and responsibility for any and all damages, including consequential damages, which may arise from the user's reliance on this information.

Revised: 3/27/2024 | NOT FOR CONSTRUCTION  
Path: Z:\Projects\IDEN\1163\_0039\_CO\_Pathway\_Permit\GIS\Layouts\Permitting\El\_Paso\_Co\El\_Paso\_Co\_Permit.aprx

# COLORADO'S POWER PATHWAY



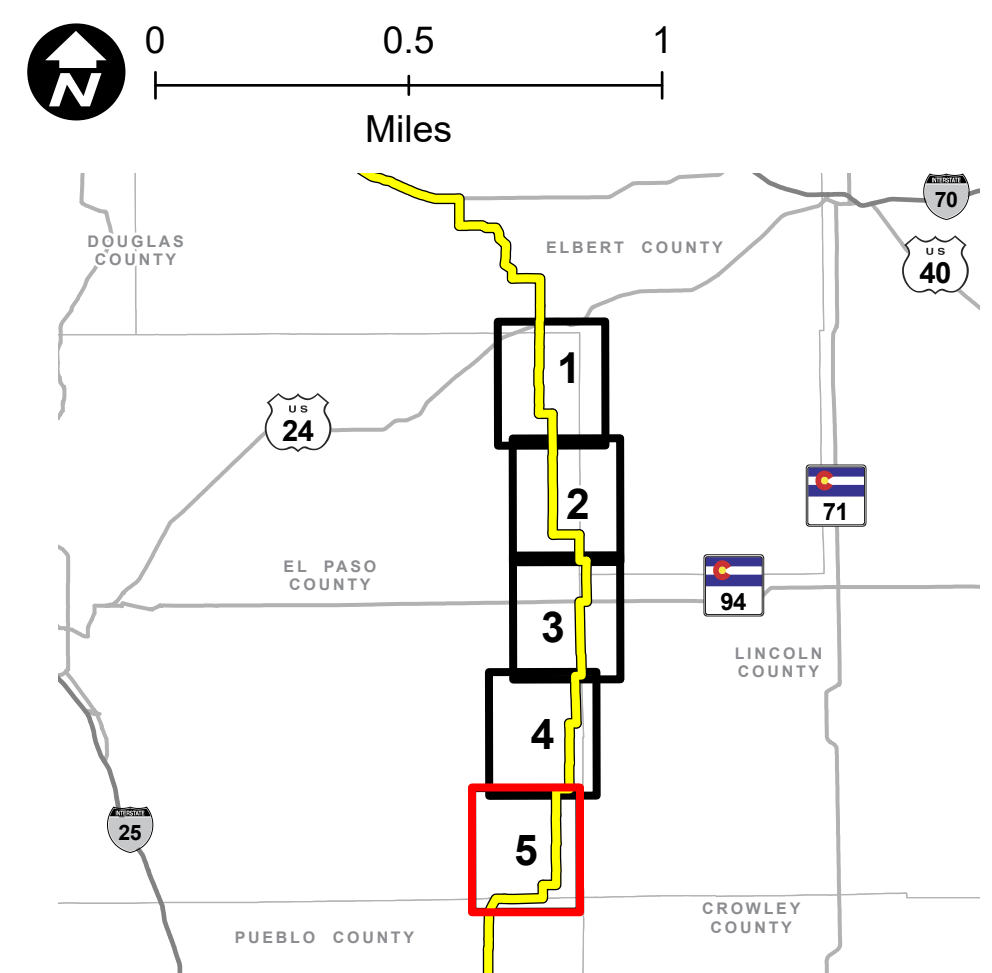
## Legend

- Proposed Transmission Route
- Boundary**  
(CDOT 2021, DOLA 2021)
- County
- Municipal Boundary
- Transportation**  
(CDOT 2021, BTS 2020)
- U.S. Highway
- Major Road
- Local Road

- Soil Hazards**  
(CGS 2024)
- Eolian (Wind Blown) Deposits
- Dune & Sheet Sand Deposits
- Cretaceous & Tertiary Formations

- Geologic Hazards**  
(CGS 2024)
- Landslide
- Wildfire Hazard Potential**  
(USDA 2024)
- Very High
- Very Low

- Hydrology**  
(NHD 2023)
- Perennial Stream
- Intermittent Stream
- Waterbody



**PRELIMINARY, SUBJECT TO CHANGE**  
The information contained herein is believed to be accurate and suitable for limited internal uses only. Xcel Energy/Public Service Company of Colorado makes no warranty as to the accuracy or suitability of any information contained herein for use by third parties. The accuracy of this map and the information depicted should be verified prior to use. The user shall assume all risk and responsibility for any and all damages, including consequential damages, which may arise from the user's reliance on this information.

Revised: 3/27/2024 | NOT FOR CONSTRUCTION

Path: Z:\Projects\DEN\1163\_0039\_CO\_Pathway\_Permit\GIS\Layouts\Permitting\El\_Paso\_Co\El\_Paso\_Co\_Permit.aprx