

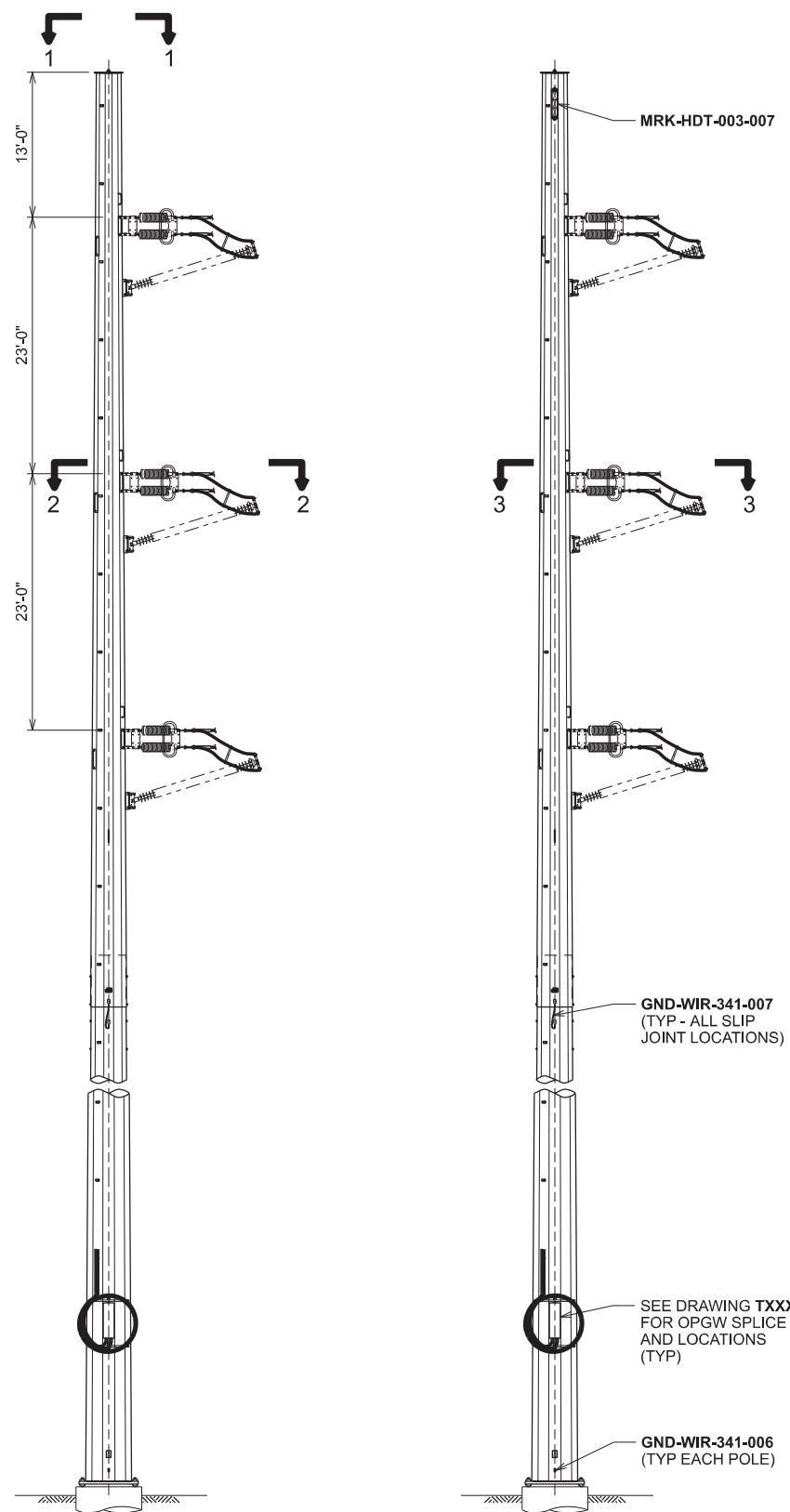
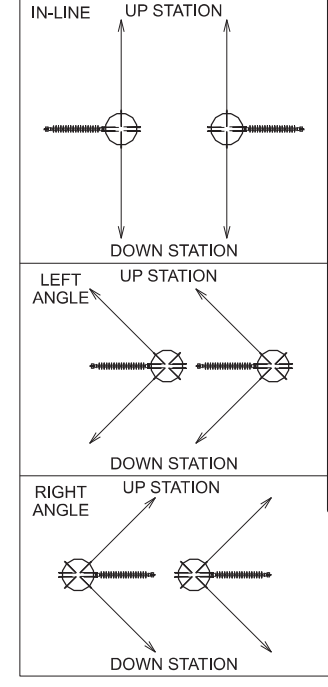
**ATTACHMENT J: POLE DETAILS, REPRESENTATIVE PHOTOGRAPHS,
AND SIMULATIONS**

J1: Typical Transmission Pole Configurations

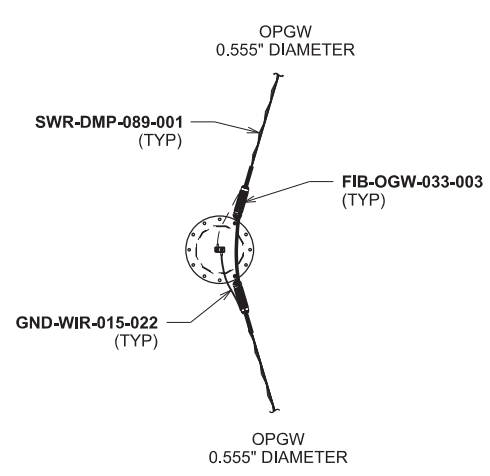
QTY	SUBASSEMBLIES
12	CND-SPA-006-001
4	FIB-OGW-033-003
3	FIT-CST-004-005
12	FIT-DEC-267-001
4	GND-WIR-015-022
2	GND-WIR-341-006
4	GND-WIR-341-007
6	ING-BEL-001-044
3	INY-HLP-262-001
1	MRK-HDT-003-007
4	SWR-DMP-089-001

QTY	SUBASSEMBLIES
3	FIT-CST-004-005
12	FIT-DEC-267-001
6	ING-BEL-001-044
3	INY-HLP-262-001

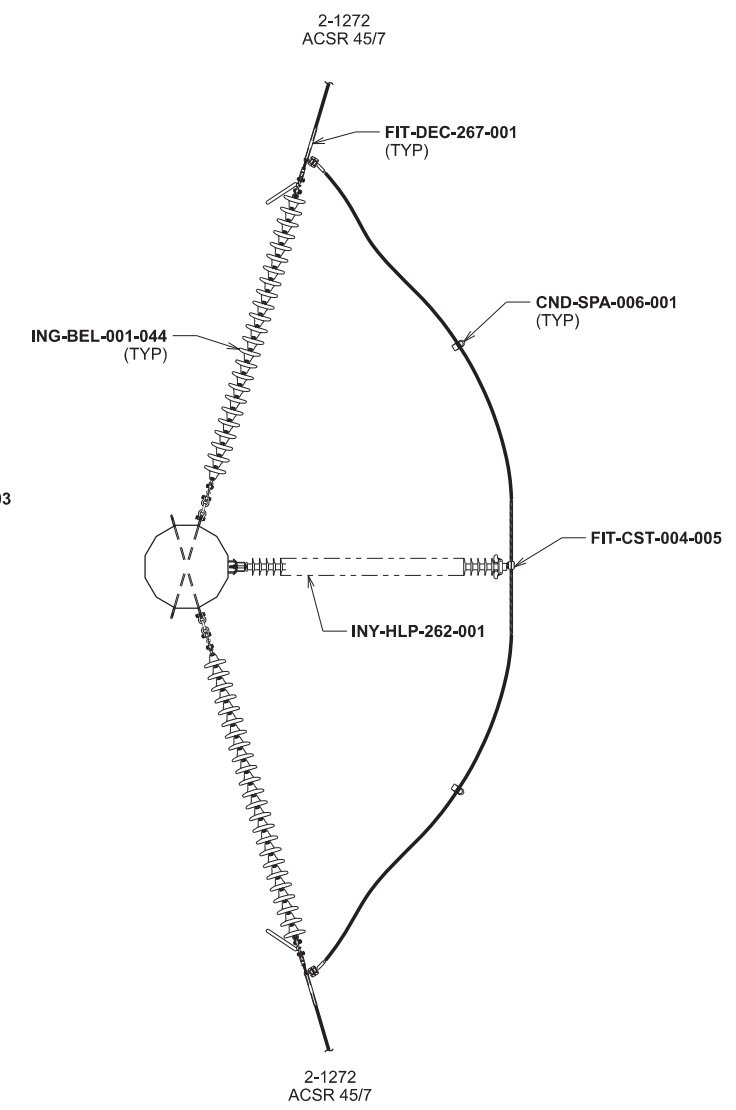
JUMPER POST ORIENTATION



ELEVATION VIEW
SCALE: 1/16" = 1'-0"



SECTION 1-1
OPGW SHIELD WIRE
SCALE: NONE
(TYPICAL BOTH POLES)



SECTION 2-2
CONDUCTOR
SCALE: NONE
(TYPICAL BOTH POLES)

NOTE:
1. TWO SLIP JOINTS ASSUMED FOR BONDING SUBASSEMBLY GND-WIR-341-007 QUANTITY ON THIS TYPICAL DRAWING. ADDITIONAL QUANTITY WILL BE PROVIDED FOR POLES WITH MORE THAN TWO JOINTS.

DRAWING REFERENCE
PLAN & PROFILE _____ XXXXXXXX
SUBASSEMBLY INDEX _____ XXXXXXXX

THIS PE SEAL IS ONLY APPLICABLE TO THE CURRENT CONSTRUCTION REVISION

ISSUED BY ENGINEERING DEPT FOR: CONSTRUCTION

THIS MAP/DOCUMENT IS A TOOL TO ASSIST EMPLOYEES IN THE PERFORMANCE OF THEIR JOBS. YOUR PERSONAL SAFETY IS PROVIDED FOR BY USING SAFETY PRACTICES, PROCEDURES AND EQUIPMENT AS DESCRIBED IN THE SAFETY TRAINING PROGRAMS, MANUALS AND SPARS.
INTERNAL INFORMATION: DO NOT COPY OR DISTRIBUTE WITHOUT EXPRESS WRITTEN CONSENT FROM XCEL ENERGY

CIRCUIT 7251 345 kV
DEADEND (2 POLES)

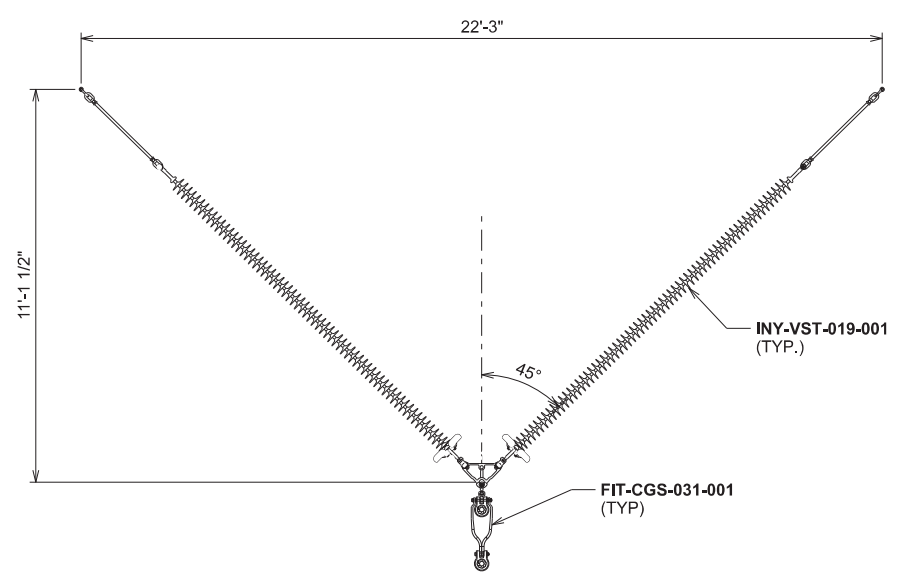
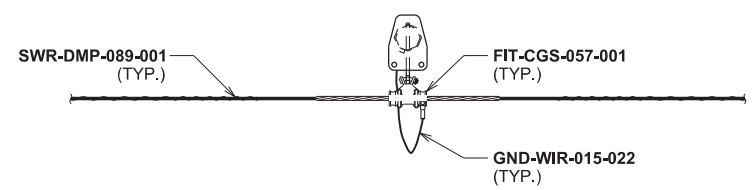
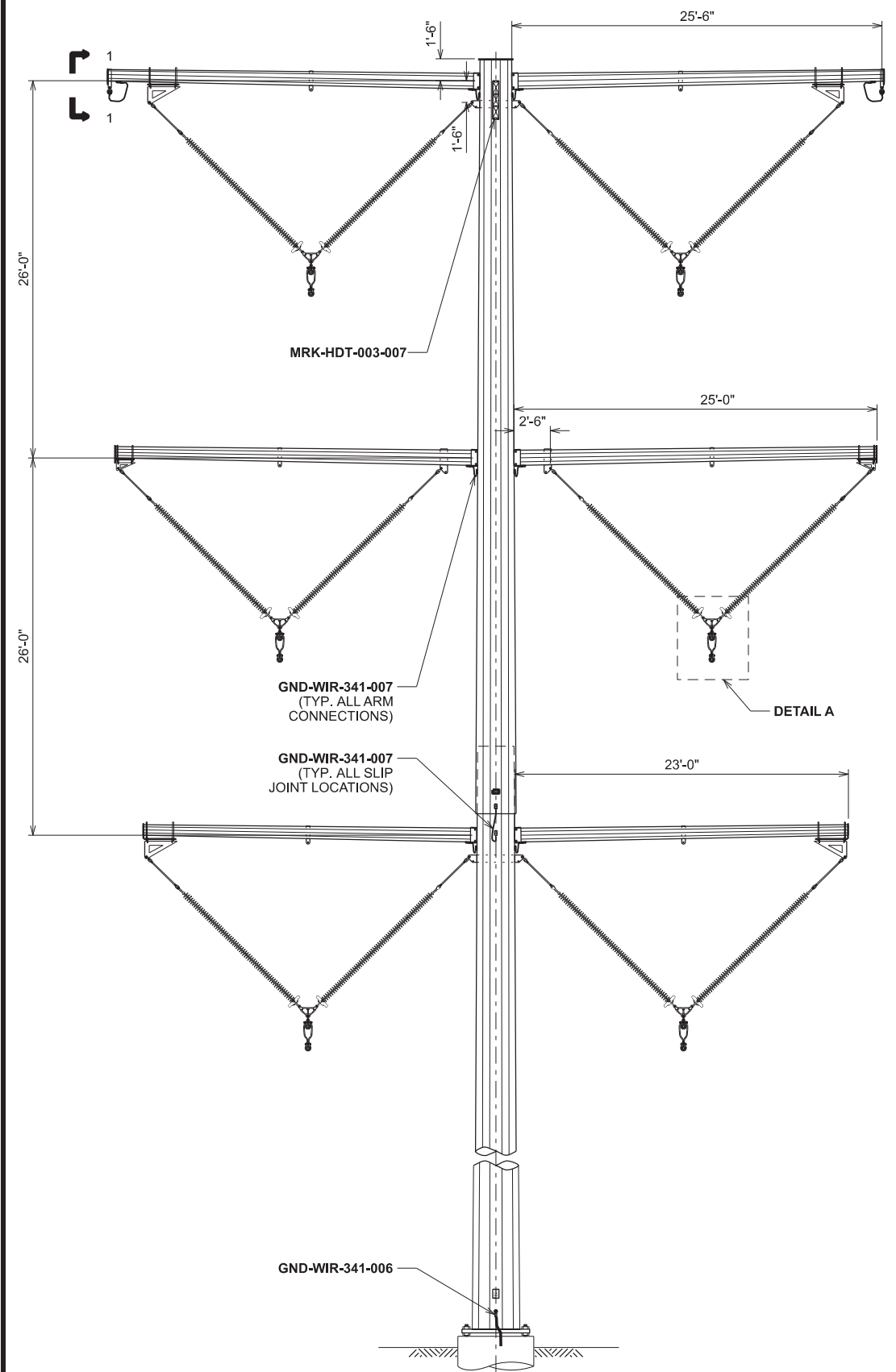
XcelEnergy® SWDBHLZ1-1 SCALE AS NOTED REV 0

REV	DATE	WBS 4	REVISION DESCRIPTION
0	10/26/2021	A.0001672.004.001.003	IFC - INSTALLATION OF 345KV TRANSMISSION LINE

SWDBHLZ1-1.DGN 8/26/2021 9:15:14 AM

QTY	SUBASSEMBLIES
2	FIT-CGS-057-001
3	FIT-CGS-031-001
2	GND-WIR-015-022
1	GND-WIR-341-006
8	GND-WIR-341-007
3	INY-VST-019-001
1	MRK-HDT-003-007
4	SWR-DMP-089-001

QTY	SUBASSEMBLIES
3	FIT-CGS-031-001
3	INY-VST-019-001



NOTE:
1. TWO SLIP JOINTS ASSUMED FOR BONDING SUBASSEMBLY GND-WIR-341-007 QUANTITY ON THIS TYPICAL DRAWING. ADDITIONAL QUANTITY WILL BE PROVIDED FOR POLES WITH MORE THAN TWO JOINTS.

DRAWING REFERENCE
PLAN & PROFILE _____ T366G001
SUBASSEMBLY INDEX _____ T366X001

ELEVATION: <7,300 FT

ISSUED BY ENGINEERING DEPT FOR: CONSTRUCTION

THIS MAP/DOCUMENT IS A TOOL TO ASSIST EMPLOYEES IN THE PERFORMANCE OF THEIR JOBS. YOUR PERSONAL SAFETY IS PROVIDED FOR BY USING SAFETY PRACTICES, PROCEDURES AND EQUIPMENT AS DESCRIBED IN THE SAFETY TRAINING PROGRAMS, MANUALS AND SPARS.
INTERNAL INFORMATION: DO NOT COPY OR DISTRIBUTE WITHOUT EXPRESS WRITTEN CONSENT FROM XCEL ENERGY

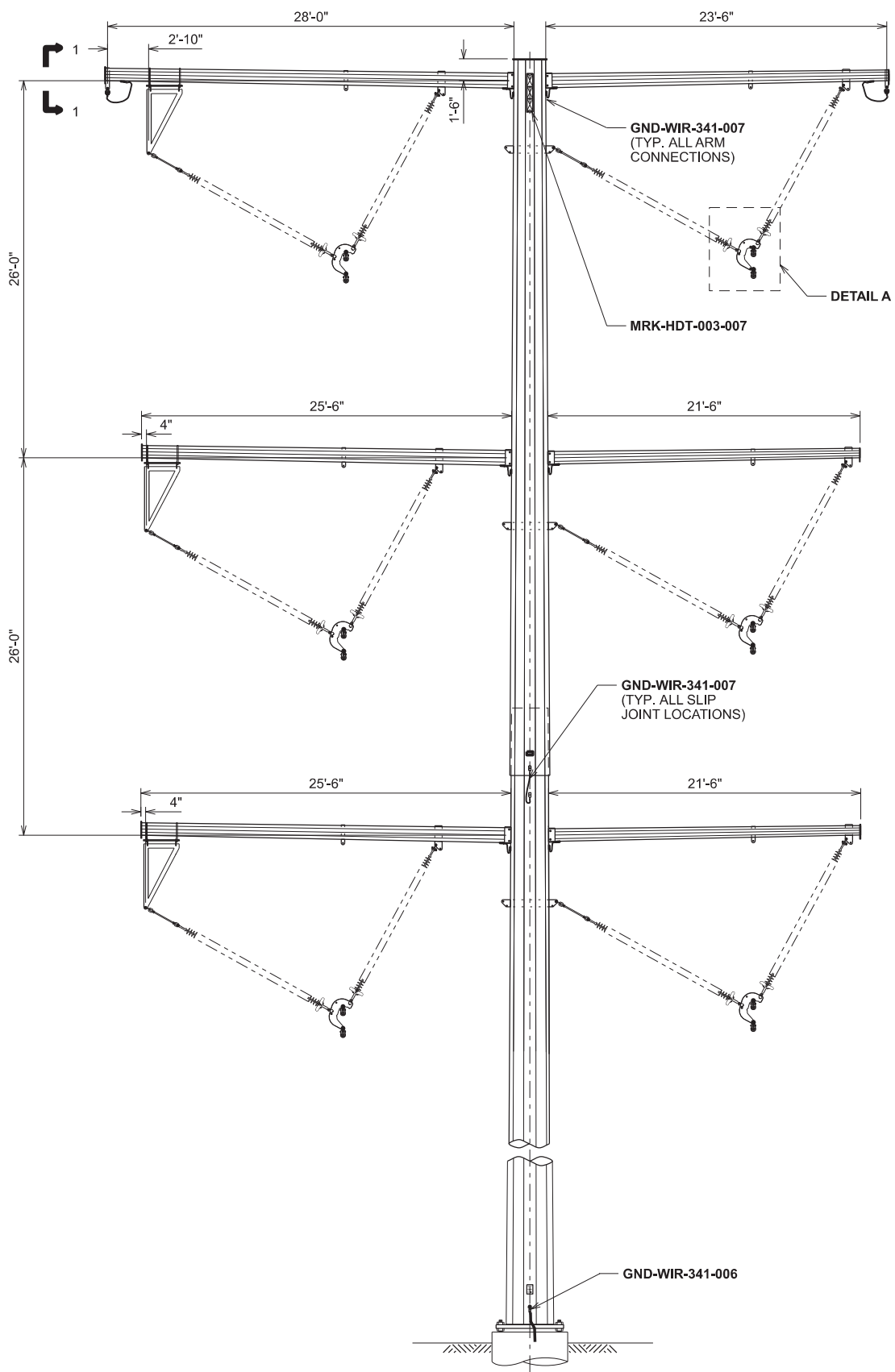
CIRCUIT 7251 345 kV
TANGENT POLE

XcelEnergy® SWSAHQZ1-1 SCALE AS NOTED REV 0

REV	DATE	WBS 4	REVISION DESCRIPTION
0	10/26/2021	A.0001672.004.001.003	IFC - INSTALLATION OF 345KV TRANSMISSION LINE

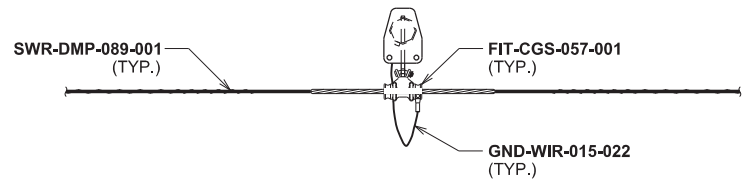
QTY	SUBASSEMBLIES
2	FIT-CGS-057-001
6	FIT-CGS-050-001
2	GND-WIR-015-022
1	GND-WIR-341-006
8	GND-WIR-341-007
3	INY-VST-020-001
1	MRK-HDT-003-007
4	SWR-DMP-089-001

QTY	SUBASSEMBLIES
6	FIT-CGS-050-001
3	INY-VST-020-001

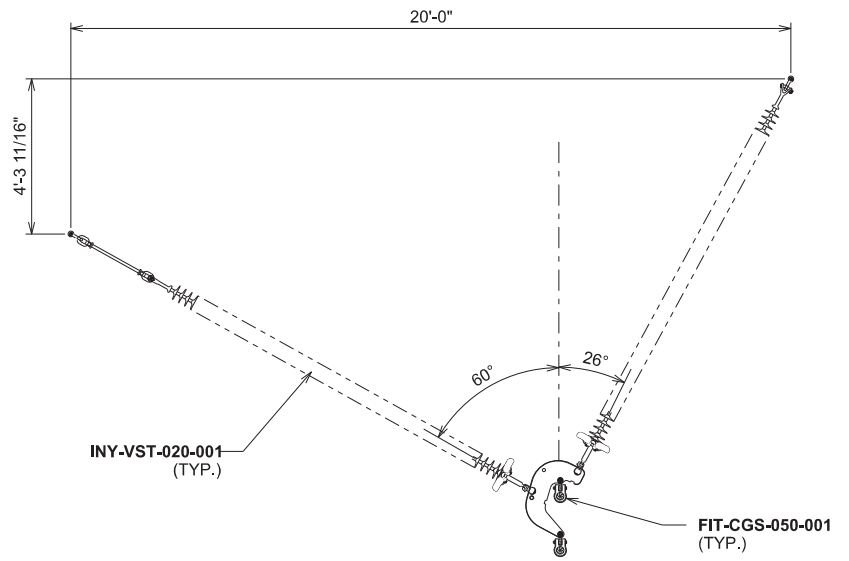


ELEVATION VIEW

POLE SHOWN IS RIGHT
(POSITIVE) ANGLE CONFIGURATION -
ROTATE 180° FOR LEFT
(NEGATIVE) ANGLE CONFIGURATION



SECTION 1-1
OPGW
SCALE: NONE
TYPICAL BOTH SIDES



DETAIL A
CONDUCTOR SUSPENSION
SCALE: NONE

NOTE:

- TWO SLIP JOINTS ASSUMED FOR BONDING SUBASSEMBLY GND-WIR-341-007 QUANTITY ON THIS TYPICAL DRAWING. ADDITIONAL QUANTITY WILL BE PROVIDED FOR POLES WITH MORE THAN TWO JOINTS.

DRAWING REFERENCE

PLAN & PROFILE _____ T366G001
SUBASSEMBLY INDEX _____ T366X001

ELEVATION: <7,300 FT

ISSUED BY ENGINEERING DEPT FOR: CONSTRUCTION

THIS MAP/DOCUMENT IS A TOOL TO ASSIST EMPLOYEES IN THE PERFORMANCE OF THEIR JOBS. YOUR PERSONAL SAFETY IS PROVIDED FOR BY USING SAFETY PRACTICES, PROCEDURES AND EQUIPMENT AS DESCRIBED IN THE SAFETY TRAINING PROGRAMS, MANUALS AND SPARS.
INTERNAL INFORMATION: DO NOT COPY OR DISTRIBUTE WITHOUT EXPRESS WRITTEN CONSENT FROM XCEL ENERGY

CIRCUIT 7251 345 kV

ANGLE POLE



SWSAHQZ2-1

SCALE AS NOTED
REV 0

REV	DATE	WBS 4	REVISION DESCRIPTION
0	10/26/2021	A.0001672.004.001.003	IFC - INSTALLATION OF 345KV TRANSMISSION LINE

5340.1-345-18.DGN 8/18/2021 11:50:49 AM

J2: Representative Photograph



Representative Transmission Line

J3: Representative Photographic Simulations

COLORADO'S POWER PATHWAY

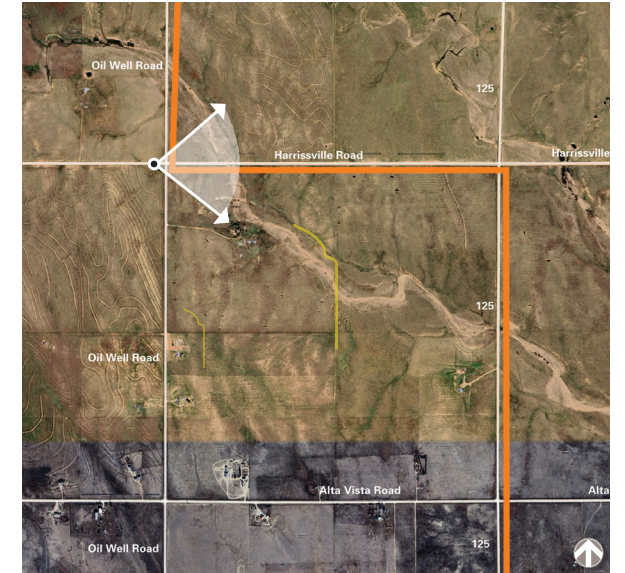
EL PASO COUNTY VISUAL SIMULATIONS

March 2024

KOP 7: Harrisville Road



PRINT GUIDE / IMAGE NOTES:
This sheet should be printed at 11 by 17 inches; full size with no scaling; and viewed at 10 inches. If viewed on a computer monitor, the document should be scaled to 100 percent and viewed at 10 inches away.



KEY LOCATION MAP

Viewpoint Number:	7
Viewpoint Location:	Harrisville Rd
Date of Photograph:	12/15/2023
Time of Photograph:	2:13PM (MST)
Latitude:	39.042140°
Longitude:	-104.109667°
Viewing Direction:	East
Weather Condition:	Clear
Ground Elevation + Camera Height:	6 feet

EXISTING CONDITION

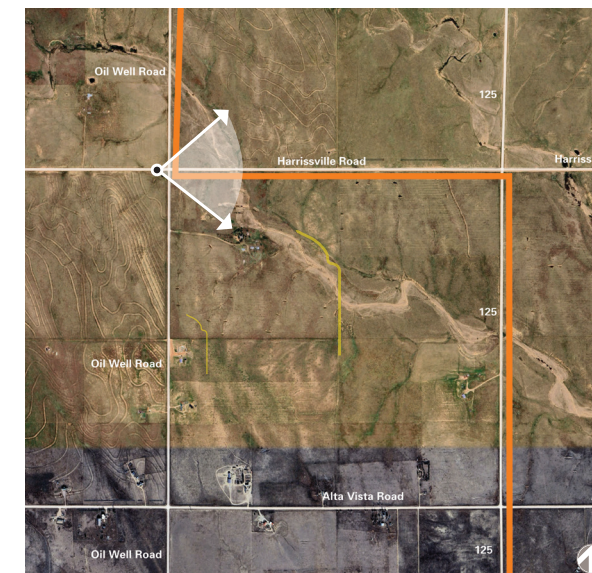
IMAGE DATA

KOP 7: Harrisville Road



PRINT GUIDE / IMAGE NOTES:

This sheet should be printed at 11 by 17 inches; full size with no scaling; and viewed at 10 inches. If viewed on a computer monitor, the document should be scaled to 100 percent and viewed at 10 inches away.



KEY LOCATION MAP

Viewpoint Number:	7
Viewpoint Location:	Harrisville Rd
Date of Photograph:	12/15/2023
Time of Photograph:	2:13PM (MST)
Latitude:	39.042140°
Longitude:	-104.109667°
Viewing Direction:	East
Weather Condition:	Clear
Ground Elevation + Camera Height:	6 feet

SIMULATED CONDITION

IMAGE DATA

KOP 8: NORTH RUSH ROAD



PRINT GUIDE / IMAGE NOTES:
This sheet should be printed at 11 by 17 inches; full size with no scaling; and viewed at 10 inches. If viewed on a computer monitor, the document should be scaled to 100 percent and viewed at 10 inches away.



KEY LOCATION MAP

Viewpoint Number:	8
Viewpoint Location:	North Rush Rd
Date of Photograph:	12/15/2023
Time of Photograph:	2:34PM (MST)
Latitude:	38.976496°
Longitude:	-104.090412°
Viewing Direction:	South
Weather Condition:	Partly Cloudy
Ground Elevation + Camera Height:	6 feet

EXISTING CONDITION

IMAGE DATA

KOP 8: NORTH RUSH ROAD



PRINT GUIDE / IMAGE NOTES:
This sheet should be printed at 11 by 17 inches; full size with no scaling; and viewed at 10 inches. If viewed on a computer monitor, the document should be scaled to 100 percent and viewed at 10 inches away.



KEY LOCATION MAP

Viewpoint Number:	8
Viewpoint Location:	North Rush Rd
Date of Photograph:	12/15/2023
Time of Photograph:	2:34PM (MST)
Latitude:	38.976496°
Longitude:	-104.090412°
Viewing Direction:	South
Weather Condition:	Partly Cloudy
Ground Elevation + Camera Height:	6 feet

SIMULATED CONDITION

IMAGE DATA

KOP 9: Highway 94



PRINT GUIDE / IMAGE NOTES:
This sheet should be printed at 11 by 17 inches; full size with no scaling; and viewed at 10 inches. If viewed on a computer monitor, the document should be scaled to 100 percent and viewed at 10 inches away.



KEY LOCATION MAP

Viewpoint Number:	9
Viewpoint Location:	Highway 94
Date of Photograph:	2/06/2023
Time of Photograph:	2:27PM (MST)
Latitude:	38.840097°
Longitude:	-104.065228°
Viewing Direction:	East
Weather Condition:	Partly Cloudy
Ground Elevation + Camera Height:	6 feet

EXISTING CONDITION

IMAGE DATA

KOP 9: Highway 94



PRINT GUIDE / IMAGE NOTES:
This sheet should be printed at 11 by 17 inches; full size with no scaling; and viewed at 10 inches. If viewed on a computer monitor, the document should be scaled to 100 percent and viewed at 10 inches away.



KEY LOCATION MAP

Viewpoint Number:	9
Viewpoint Location:	Highway 94
Date of Photograph:	2/06/2023
Time of Photograph:	2:27PM (MST)
Latitude:	38.840097°
Longitude:	-104.065228°
Viewing Direction:	East
Weather Condition:	Partly Cloudy
Ground Elevation + Camera Height:	6 feet

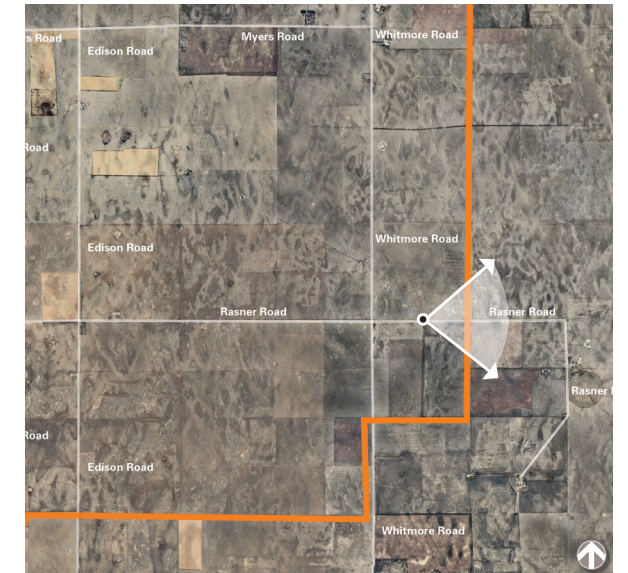
SIMULATED CONDITION

IMAGE DATA

KOP 10: RASNER ROAD



PRINT GUIDE / IMAGE NOTES:
This sheet should be printed at 11 by 17 inches; full size with no scaling; and viewed at 10 inches. If viewed on a computer monitor, the document should be scaled to 100 percent and viewed at 10 inches away.



KEY LOCATION MAP

Viewpoint Number:	10
Viewpoint Location:	Rasner Road
Date of Photograph:	12/15/2023
Time of Photograph:	3:49PM (MST)
Latitude:	38.551038°
Longitude:	-104.099791°
Viewing Direction:	East
Weather Condition:	Partly Cloudy
Ground Elevation + Camera Height:	6 feet

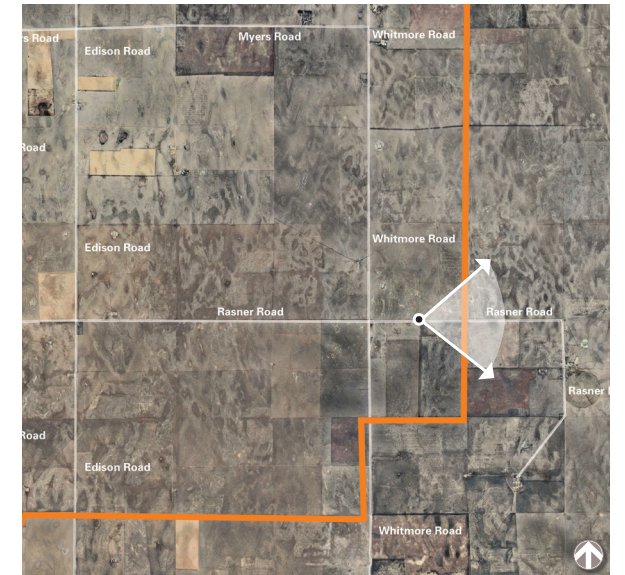
EXISTING CONDITION

IMAGE DATA

KOP 10: RASNER ROAD



PRINT GUIDE / IMAGE NOTES:
This sheet should be printed at 11 by 17 inches; full size with no scaling; and viewed at 10 inches. If viewed on a computer monitor, the document should be scaled to 100 percent and viewed at 10 inches away.



KEY LOCATION MAP

Viewpoint Number:	10
Viewpoint Location:	Rasner Road
Date of Photograph:	12/15/2023
Time of Photograph:	3:49PM (MST)
Latitude:	38.551038°
Longitude:	-104.099791°
Viewing Direction:	East
Weather Condition:	Partly Cloudy
Ground Elevation + Camera Height:	6 feet

SIMULATED CONDITION

IMAGE DATA