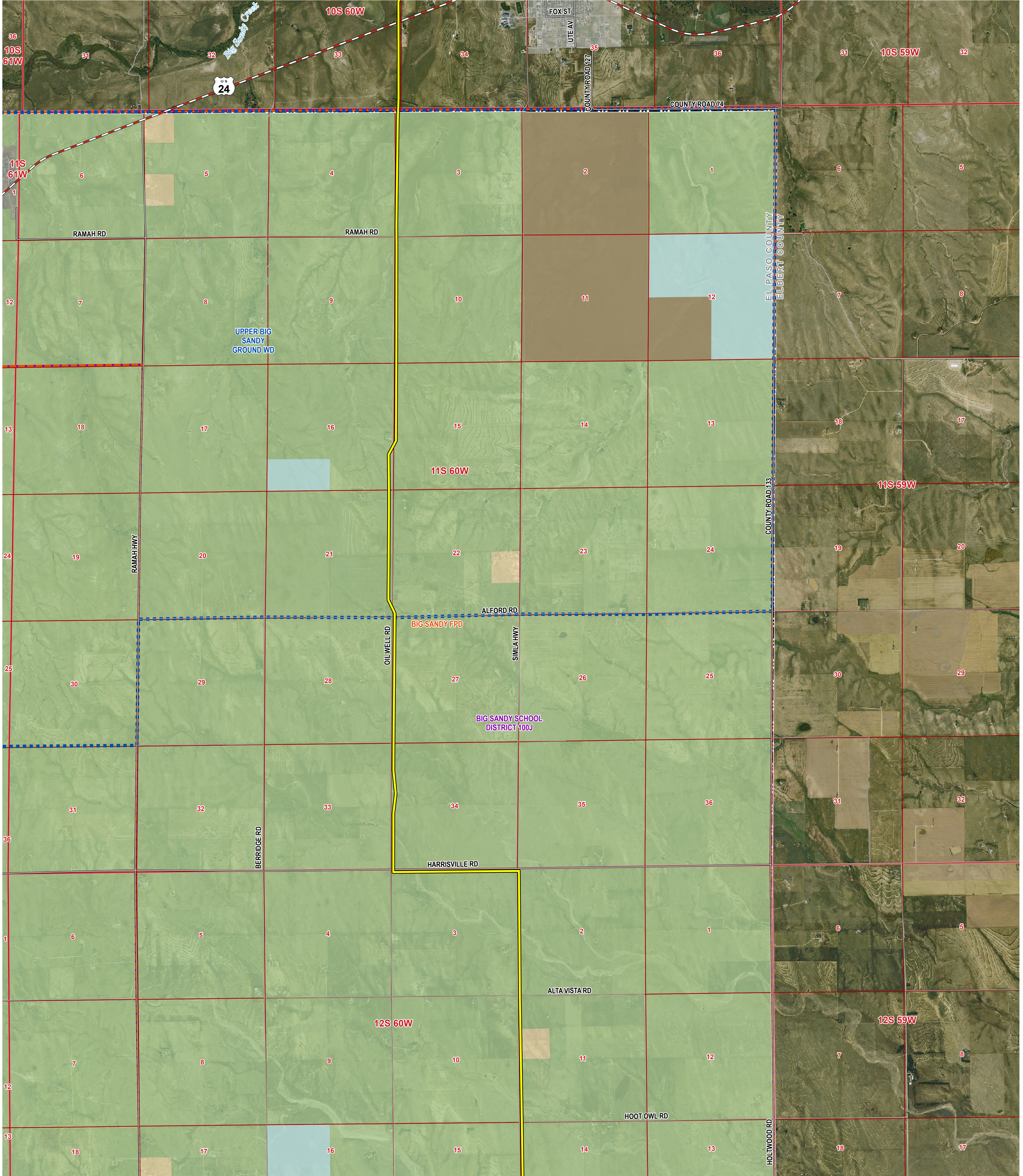


ATTACHMENT F: LAND USE AND ZONING MAP

this does not include
land uses - it depicts
zoning adj to corridor

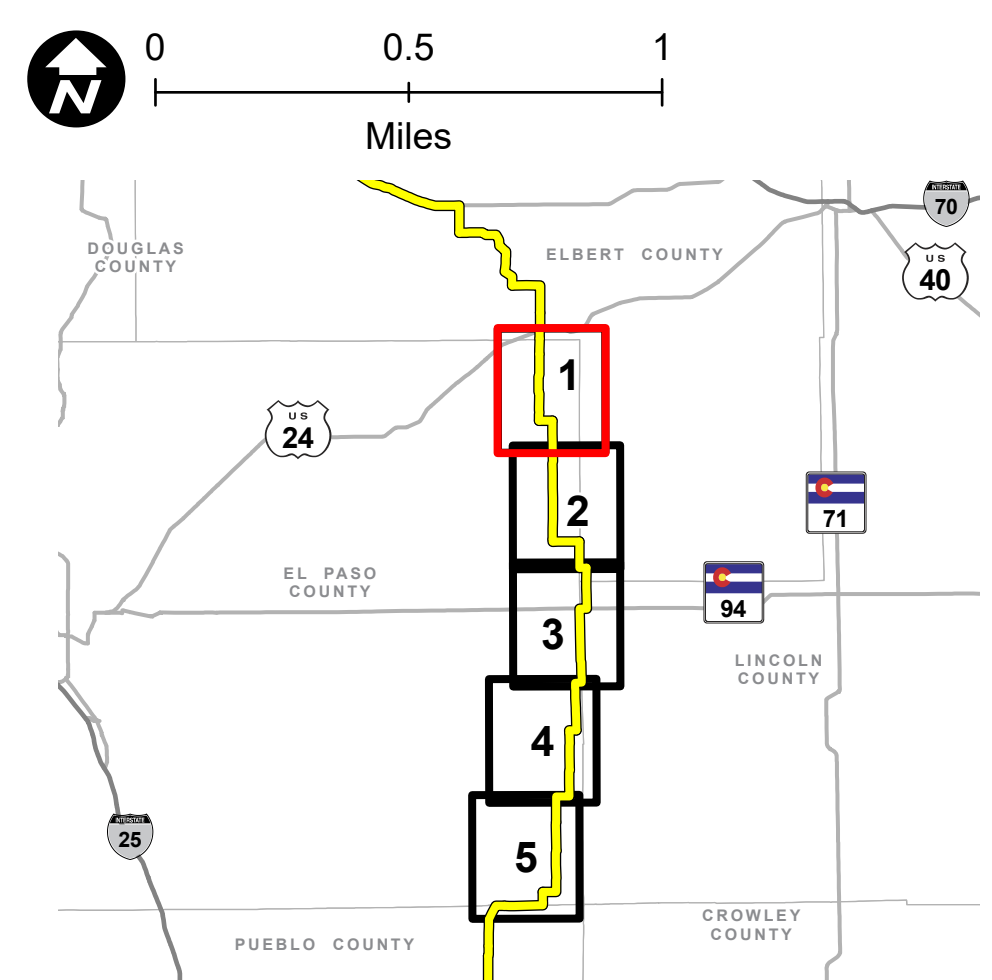
COLORADO'S POWER PATHWAY



- Legend**
- Proposed Transmission Route
 - Boundary** (CDOT 2021, BLM 2020, DOLA 2021)
 - County
 - Section
 - Township
 - Municipal Boundary
 - Transportation** (CDOT 2021, BTS 2020)
 - U.S. Highway
 - Major Road
 - Local Road

- Zoning** (El Paso County 2023)
- A-35: Agricultural (35 acres)
 - RR-5: Residential Rural (5 acres)
- Jurisdiction** (COMap 2023)
- Conservation Easement
 - CO State

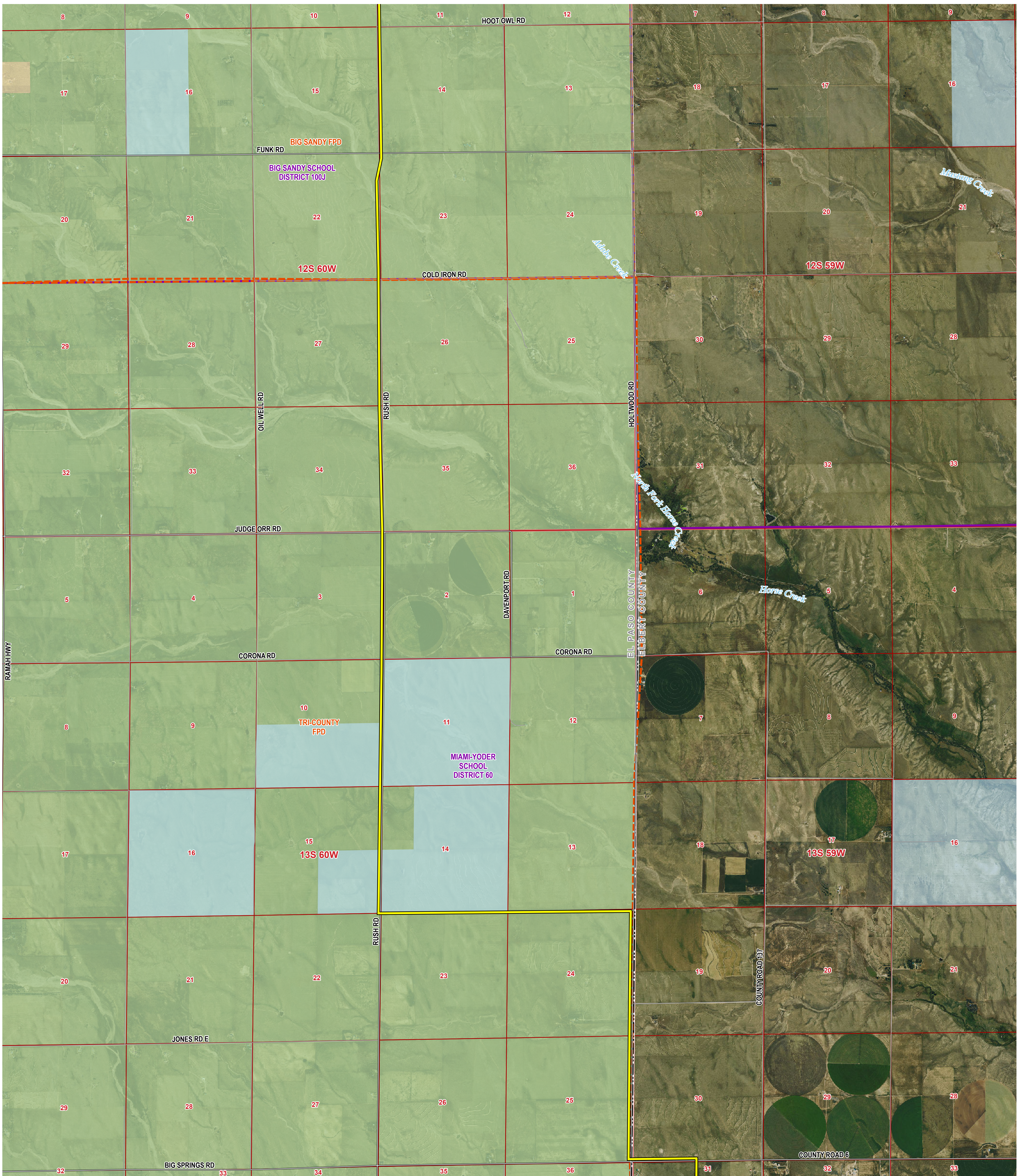
- Special Districts** (El Paso County 2023)
- Water District
 - Fire District
 - School District



PRELIMINARY, SUBJECT TO CHANGE
 The information contained herein is believed to be accurate and suitable for limited internal uses only. Xcel Energy/Public Service Company of Colorado makes no warranty as to the accuracy or suitability of any information contained herein for use by third parties. The accuracy of this map and the information depicted should be verified prior to use. The user shall assume all risk and responsibility for any and all damages, including consequential damages, which may arise from the user's reliance on this information.

Revised: 3/29/2024 | NOT FOR CONSTRUCTION
 Path: Z:\Projects\IDEN\1163_0039_CO_Pathway_Permitting\GIS\Layouts\Permitting\El_Paso_Co\El_Paso_Co_Permit.aprx

COLORADO'S POWER PATHWAY



Legend

— Proposed Transmission Route

Boundary
(CDOT 2021, BLM 2020, DOLA 2021)

- County
- Section
- Township
- Municipal Boundary

Transportation
(CDOT 2021, BTS 2020)

- U.S. Highway
- Major Road
- Local Road

Zoning
(El Paso County 2023)

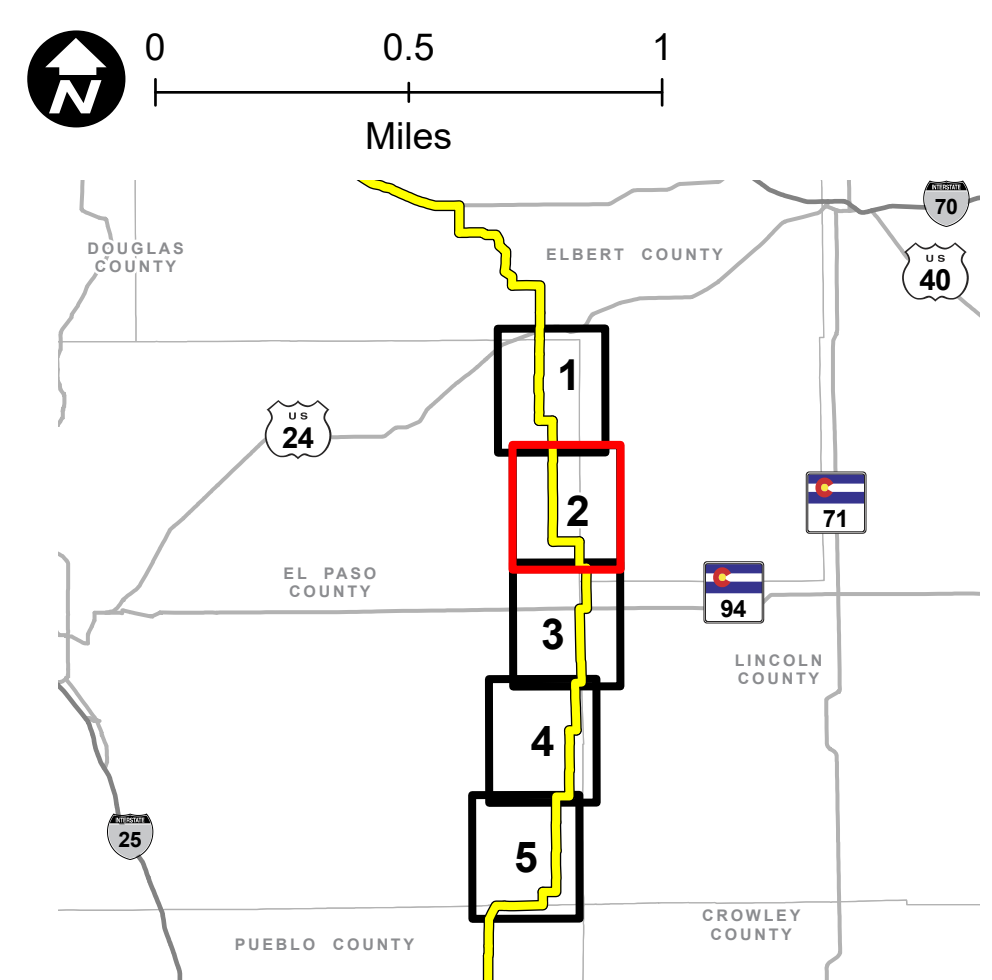
- A-35: Agricultural (35 acres)
- RR-5: Residential Rural (5 acres)

Jurisdiction
(COMap 2023)

- Conservation Easement
- CO State

Special Districts
(El Paso County 2023)

- Water District
- Fire District
- School District

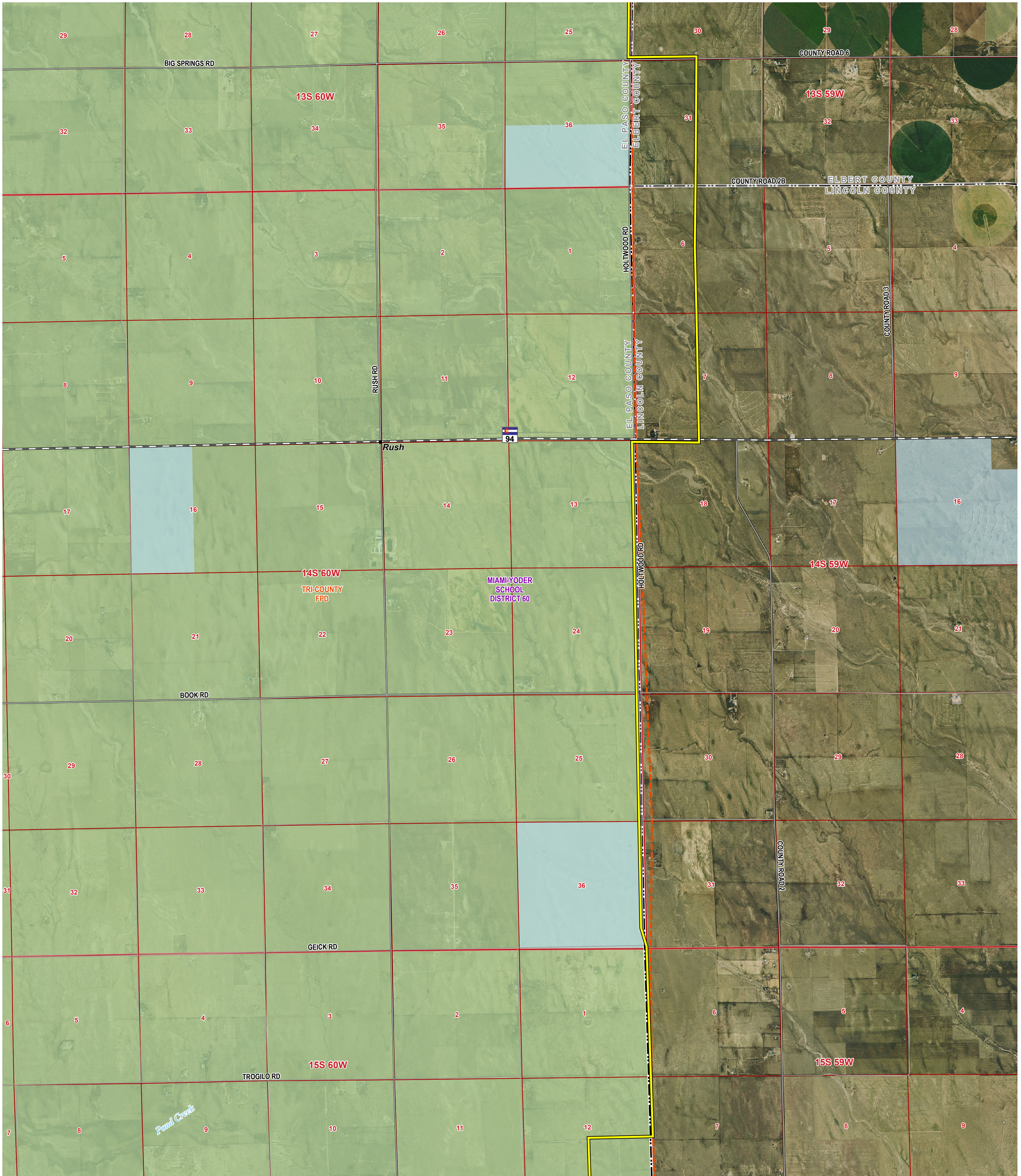


PRELIMINARY, SUBJECT TO CHANGE

The information contained herein is believed to be accurate and suitable for limited internal uses only. Xcel Energy/Public Service Company of Colorado makes no warranty as to the accuracy or suitability of any information contained herein for use by third parties. The accuracy of this map and the information depicted should be verified prior to use. The user shall assume all risk and responsibility for any and all damages, including consequential damages, which may arise from the user's reliance on this information.

Revised: 3/29/2024 | NOT FOR CONSTRUCTION
Path: Z:\Projects\IDEN\1163_0039_CO_Pathway_Permits\GIS\Layouts\Permitting\El_Paso_Co\El_Paso_Co_Permit.aprx

COLORADO'S POWER PATHWAY

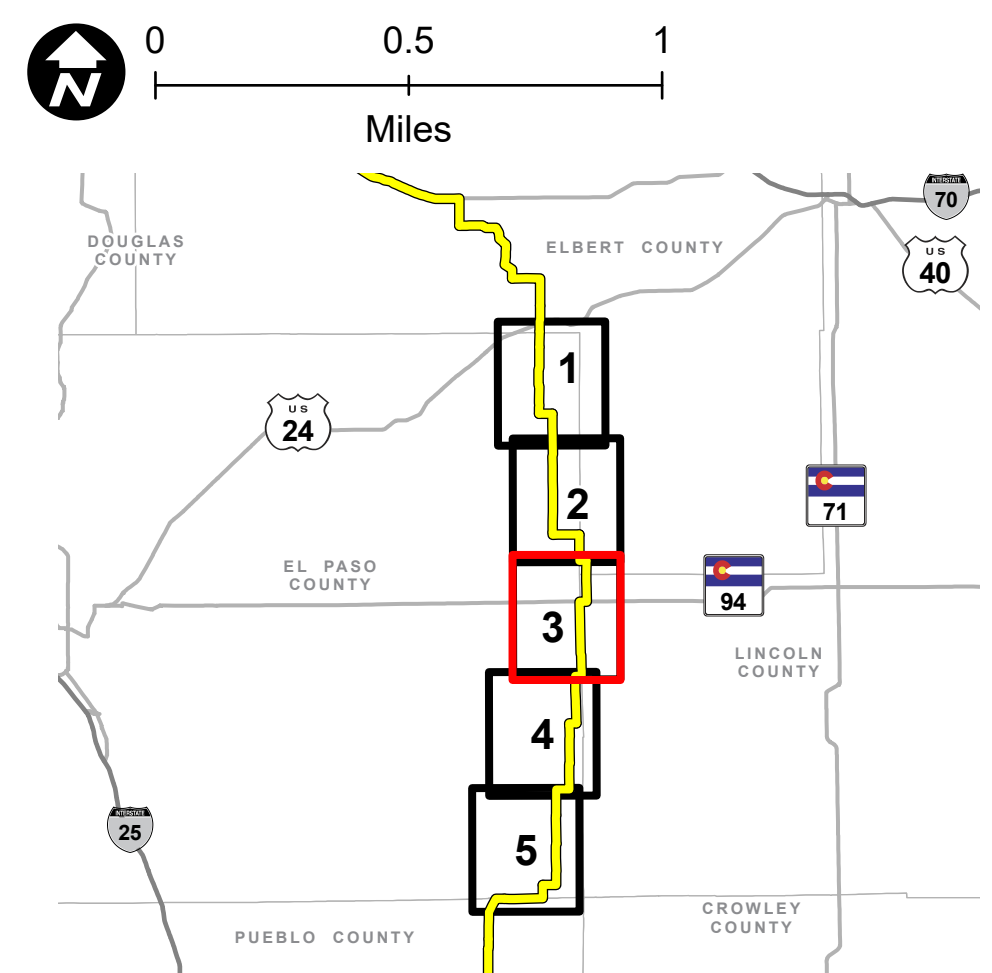


Legend

- Proposed Transmission Route
- Boundary**
(CDOT 2021, BLM 2020, DOLA 2021)
- County
- Section
- Township
- Municipal Boundary
- Transportation**
(CDOT 2021, BTS 2020)
- U.S. Highway
- Major Road
- Local Road

- Zoning**
(El Paso County 2023)
- A-35: Agricultural (35 acres)
- RR-5: Residential Rural (5 acres)
- Jurisdiction**
(COMap 2023)
- Conservation Easement
- CO State

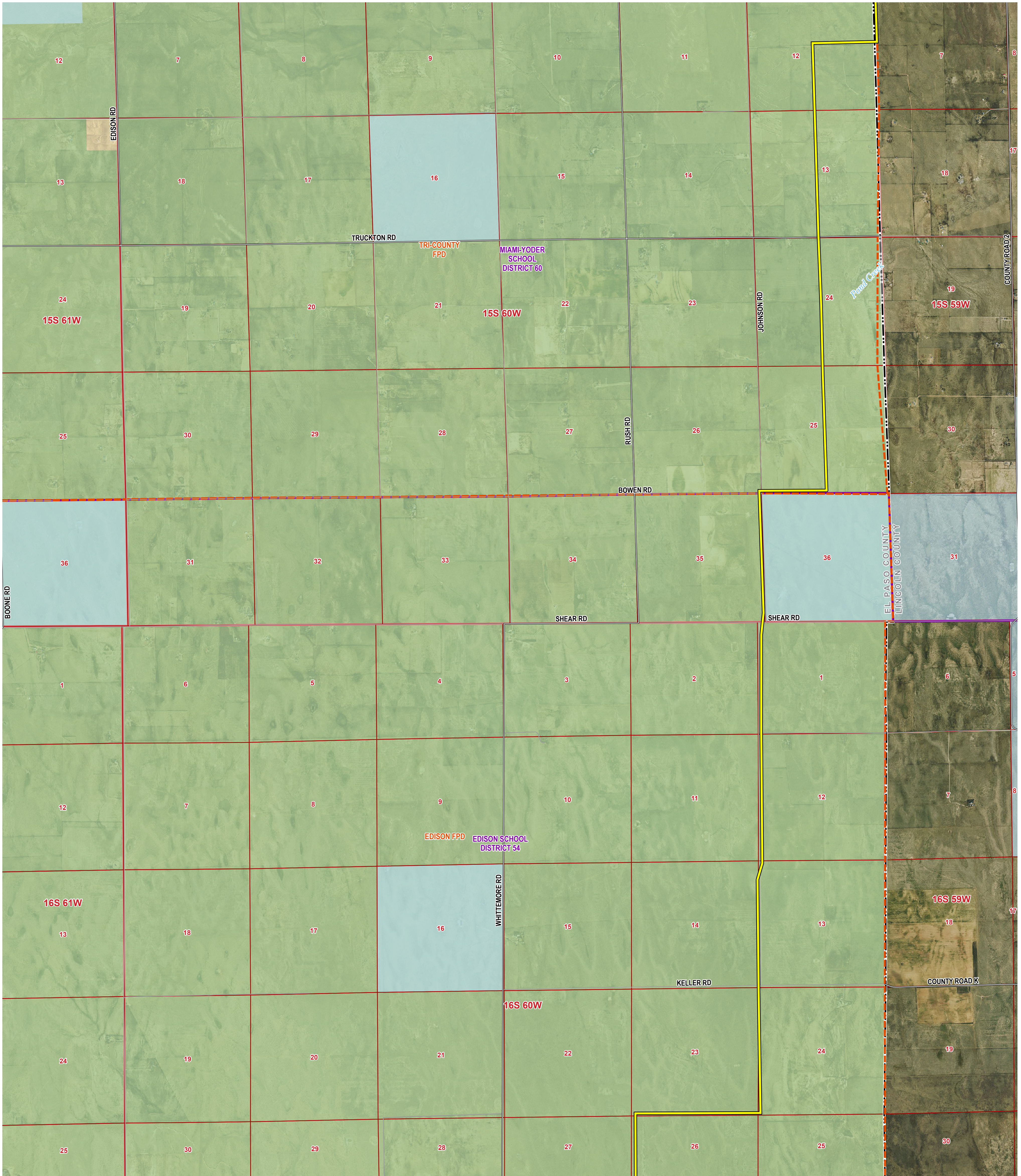
- Special Districts**
(El Paso County 2023)
- Water District
- Fire District
- School District



PRELIMINARY, SUBJECT TO CHANGE
The information contained herein is believed to be accurate and suitable for limited internal uses only. Xcel Energy/Public Service Company of Colorado makes no warranty as to the accuracy or suitability of any information contained herein for use by third parties. The accuracy of this map and the information depicted should be verified prior to use. The user shall assume all risk and responsibility for any and all damages, including consequential damages, which may arise from the user's reliance on this information.

Revised: 3/29/2024 | NOT FOR CONSTRUCTION
Path: Z:\Projects\IDEN\1163_0039_CO_Pathway_Permitting\GIS\Layouts\Permitting\El_Paso_Co\El_Paso_Co_Permit.aprx

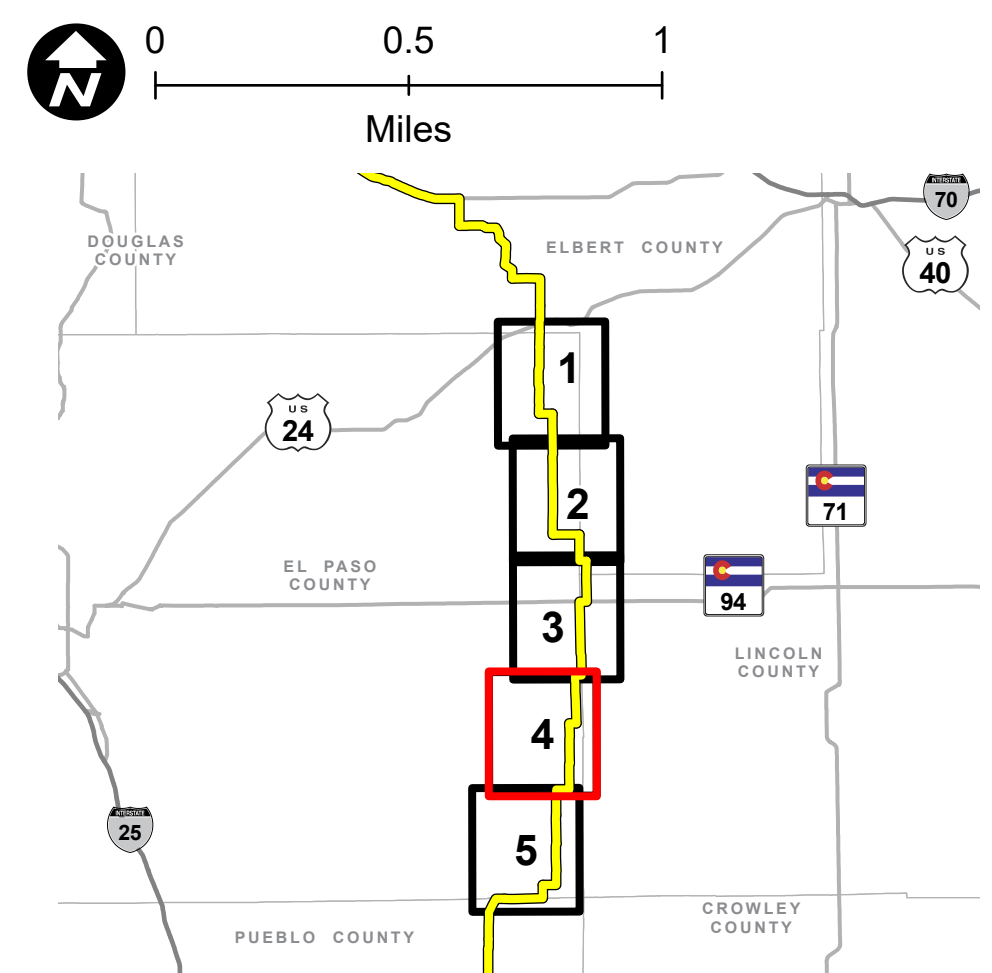
COLORADO'S POWER PATHWAY



- Legend**
- Proposed Transmission Route
 - Boundary**
(CDOT 2021, BLM 2020, DOLA 2021)
 - County
 - Section
 - Township
 - Municipal Boundary
 - Transportation**
(CDOT 2021, BTS 2020)
 - U.S. Highway
 - Major Road
 - Local Road

- Zoning**
(El Paso County 2023)
- A-35: Agricultural (35 acres)
 - RR-5: Residential Rural (5 acres)
- Jurisdiction**
(COMap 2023)
- Conservation Easement
 - CO State

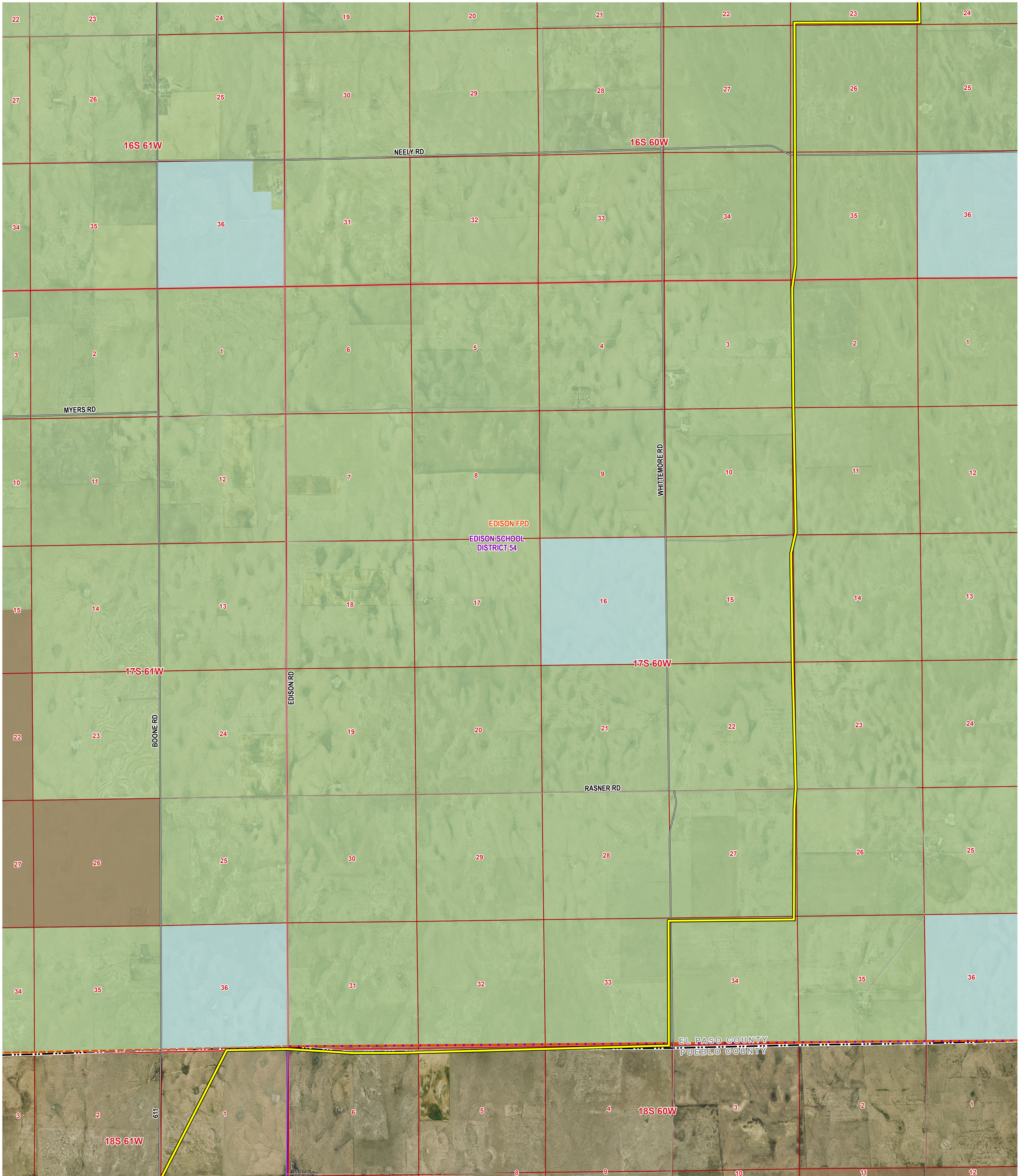
- Special Districts**
(El Paso County 2023)
- Water District
 - Fire District
 - School District



PRELIMINARY, SUBJECT TO CHANGE
The information contained herein is believed to be accurate and suitable for limited internal use only. Xcel Energy/Public Service Company of Colorado makes no warranty as to the accuracy or suitability of any information contained herein for use by third parties. The accuracy of this map and the information depicted should be verified prior to use. The user shall assume all risk and responsibility for any and all damages, including consequential damages, which may arise from the user's reliance on this information.

Revised: 3/29/2024 | NOT FOR CONSTRUCTION
Path: Z:\Projects\IDEN\1163_0039_CO_Pathway_Permits\GIS\Layouts\Permitting\El_Paso_Co\El_Paso_Co_Permit.aprx

COLORADO'S POWER PATHWAY

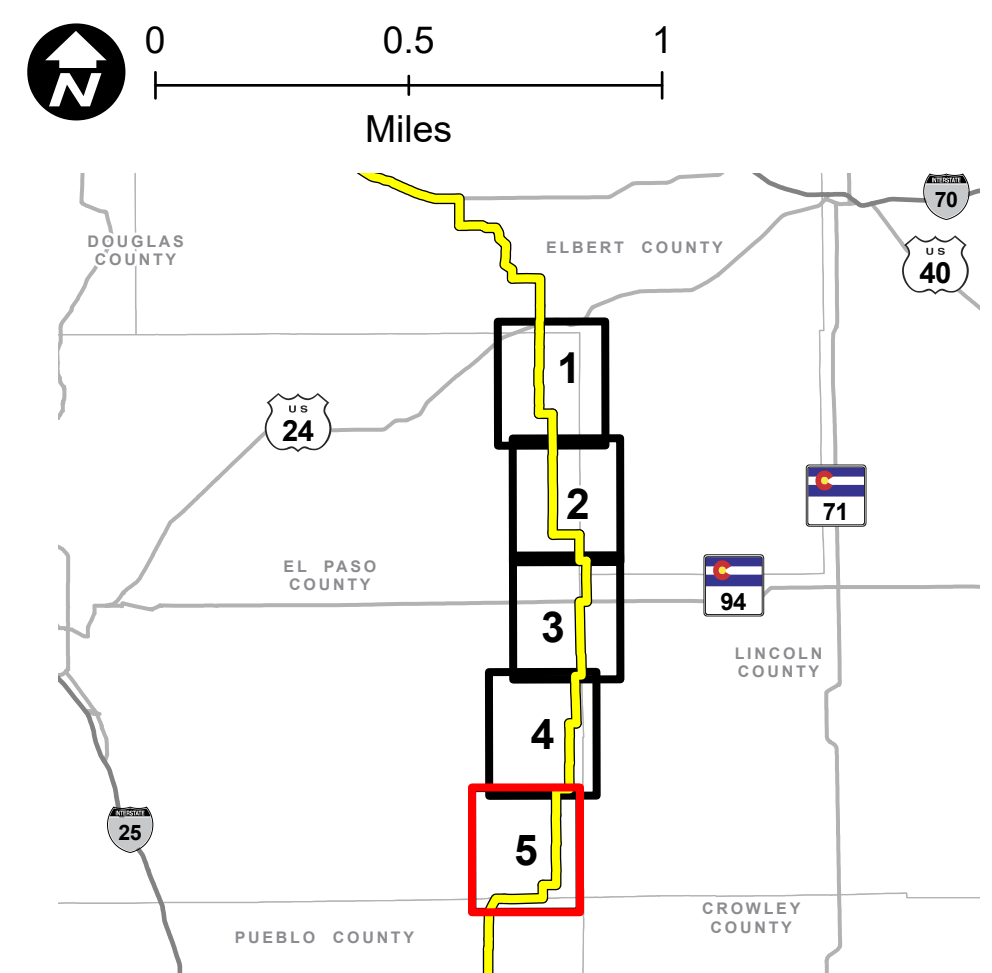


Legend

- Proposed Transmission Route
- Boundary**
(CDOT 2021, BLM 2020, DOLA 2021)
- County
- Section
- Township
- Municipal Boundary
- Transportation**
(CDOT 2021, BTS 2020)
- U.S. Highway
- Major Road
- Local Road

- Zoning**
(El Paso County 2023)
- A-35: Agricultural (35 acres)
- RR-5: Residential Rural (5 acres)
- Jurisdiction**
(COMap 2023)
- Conservation Easement
- CO State

- Special Districts**
(El Paso County 2023)
- Water District
- Fire District
- School District



PRELIMINARY, SUBJECT TO CHANGE
The information contained herein is believed to be accurate and suitable for limited internal uses only. Xcel Energy/Public Service Company of Colorado makes no warranty as to the accuracy or suitability of any information contained herein for use by third parties. The accuracy of this map and the information depicted should be verified prior to use. The user shall assume all risk and responsibility for any and all damages, including consequential damages, which may arise from the user's reliance on this information.

Revised: 3/29/2024 | NOT FOR CONSTRUCTION
Path: Z:\Projects\DEN1163_0039_CO_Pathway_Permits\GIS\Layouts\Permitting\El_Paso_Co\El_Paso_Co_Permit.aprx