

# OVERLOOK AT HOMESTEAD

THE NORTHEAST QUARTER OF THE NORTHEAST QUARTER; THE SOUTH HALF OF THE NORTHEAST QUARTER; AND THE SOUTHEAST QUARTER OF THE NORTHWEST QUARTER, ALL IN SECTION 27, TOWNSHIP 11 SOUTH, RANGE 64 WEST OF THE 6TH P.M., COUNTY OF EL PASO, STATE OF COLORADO

## PRELIMINARY PLAN

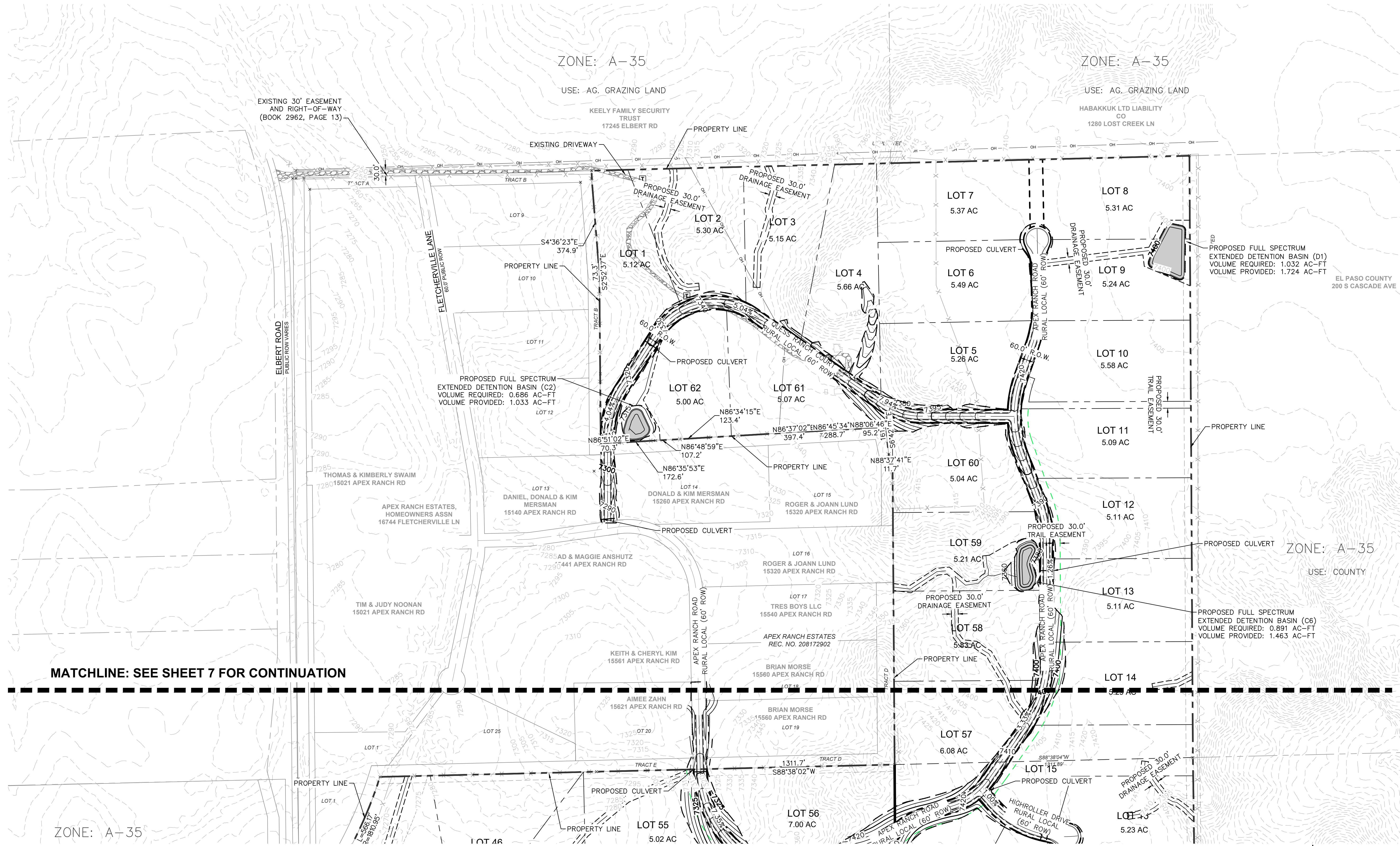


N.E.S. Inc.  
619 N. Cascade Avenue, Suite 200  
Colorado Springs, CO 80903

Tel. 719.471.0073  
Fax 719.471.0267

www.nescolorado.com

© 2012. All Rights Reserved.



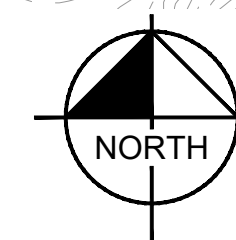
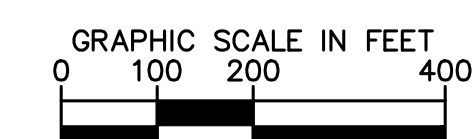
MATCHLINE: SEE SHEET 7 FOR CONTINUATION

### LEGEND

|  |                   |  |                             |  |                             |
|--|-------------------|--|-----------------------------|--|-----------------------------|
|  | PROPERTY LINE     |  | 6000 PROPOSED MAJOR CONTOUR |  | 6000 EXISTING MAJOR CONTOUR |
|  | PROPOSED LOT LINE |  | 6001 PROPOSED MINOR CONTOUR |  | 6001 EXISTING MINOR CONTOUR |
|  | EXISTING LOT LINE |  | LIMITS OF DISTURBANCE       |  |                             |

### LIMITS OF DISTURBANCE

IMPROVEMENTS = ±34.03 ACRES (1,482,538 SF)



## OVERLOOK AT HOMESTEAD

### PRELIMINARY PLAN

ELBERT ROAD  
EL PASO COUNTY,  
COLORADO

DATE: PROJECT MGR: PREPARED BY:  
DATE: A. BARLOW  
B. SWENSON / J. SMITH

### ENTITLEMENT

DATE: BY: DESCRIPTION:  
ISSUE.1 BY: DESCRIPTION

### PERLIMINARY GRADING PLAN NORTH

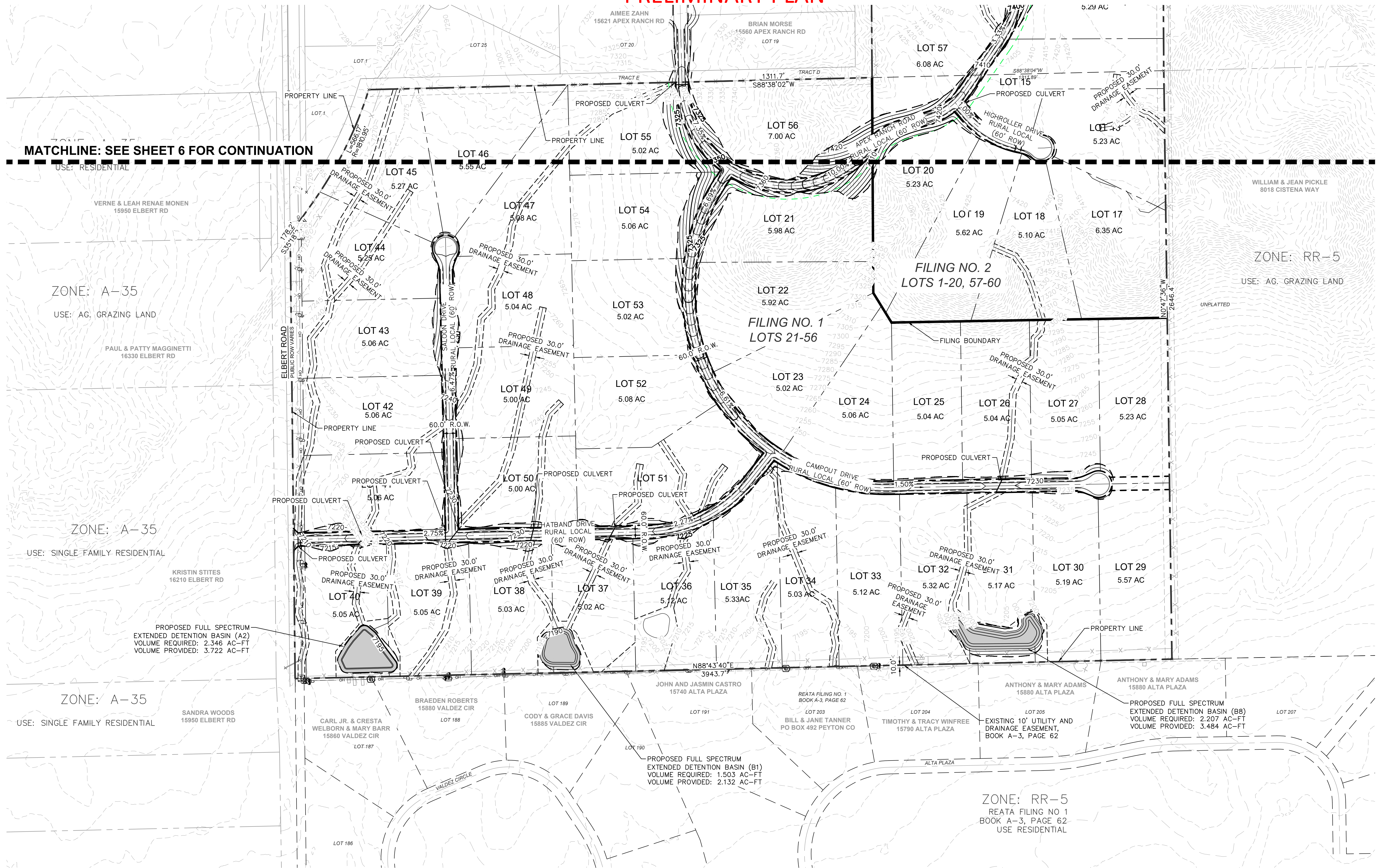
5 OF 7



# OVERLOOK AT HOMESTEAD

THE NORTHEAST QUARTER OF THE NORTHEAST QUARTER; THE SOUTH HALF OF THE NORTHEAST QUARTER; AND THE SOUTHEAST QUARTER OF THE NORTHWEST QUARTER, ALL IN SECTION 27, TOWNSHIP 11 SOUTH, RANGE 64 WEST OF THE 6TH P.M., COUNTY OF EL PASO, STATE OF COLORADO

## PRELIMINARY PLAN



**MATCHLINE: SEE SHEET 6 FOR CONTINUATION**

USE: RESIDENTIAL

ZONE: A-35

USE: AG. GRAZING LAND

ZONE: A-35

USE: SINGLE FAMILY RESIDENTIAL

ZONE: A-35

USE: SINGLE FAMILY RESIDENTIAL

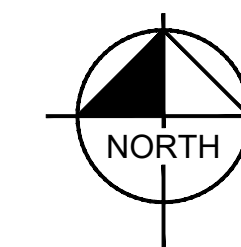
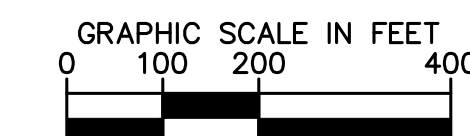
ZONE: RR-5

USE: AG. GRAZING LAND

ZONE: RR-5  
REATA FILING NO 1  
BOOK A-3, PAGE 62  
USE RESIDENTIAL

| LEGEND |                       | LIMITS OF DISTURBANCE |                             |
|--------|-----------------------|-----------------------|-----------------------------|
|        | PROPERTY LINE         |                       | 6000 PROPOSED MAJOR CONTOUR |
|        | PROPOSED LOT LINE     |                       | 6001 EXISTING MAJOR CONTOUR |
|        | EXISTING LOT LINE     |                       | 6001 EXISTING MINOR CONTOUR |
|        | LIMITS OF DISTURBANCE |                       |                             |

IMPROVEMENTS = ±34.03 ACRES (1,482,538 SF)



N.E.S. Inc.  
619 N. Cascade Avenue, Suite 200  
Colorado Springs, CO 80903

Tel. 719.471.0073  
Fax 719.471.0267

www.nescolorado.com

© 2012. All Rights Reserved.

## OVERLOOK AT HOMESTEAD

### PRELIMINARY PLAN

ELBERT ROAD  
EL PASO COUNTY,  
COLORADO

DATE: PROJECT MGR: PREPARED BY: A. BARLOW B. SWENSON / J. SMITH

### ENTITLEMENT

| DATE:    | BY: | DESCRIPTION: |
|----------|-----|--------------|
| ISSUE: 1 |     |              |

### PRELIMINARY GRADING PLAN SOUTH