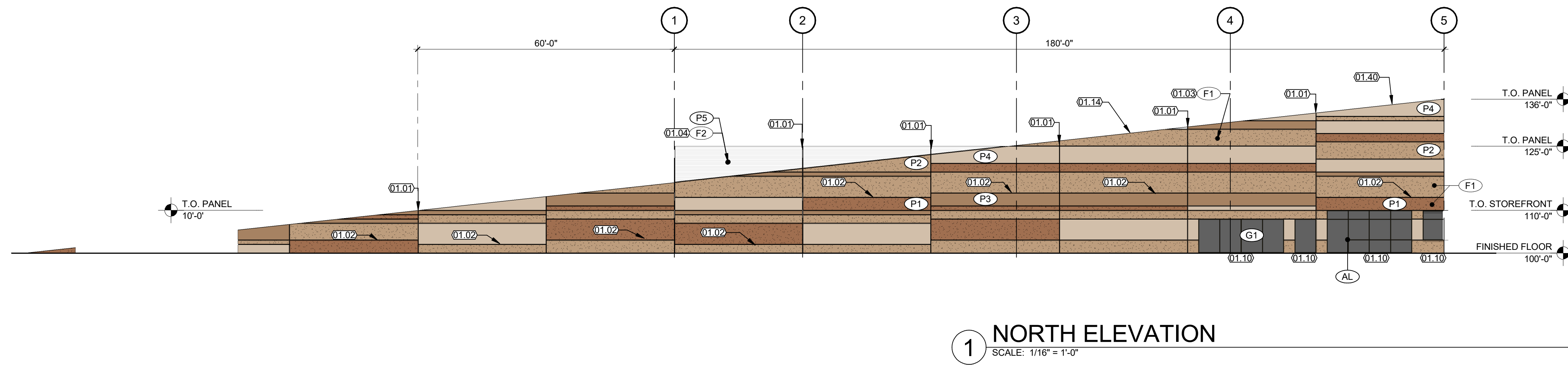


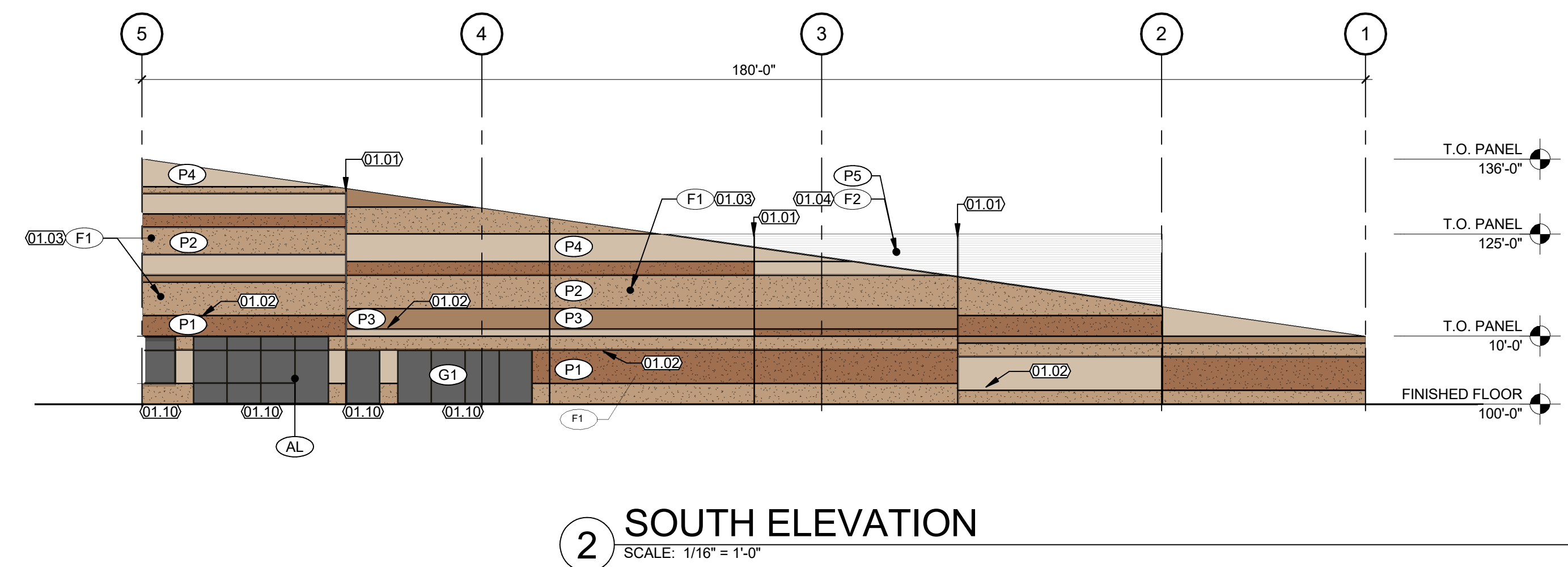
SITE DEVELOPMENT PLAN THE ROCK COMMERCE CENTER

A PORTION OF THE SOUTHWEST QUARTER OF THE NORTHWEST QUARTER OF SECTION 11,
TOWNSHIP 11 SOUTH, RANGE 67 WEST OF THE SIXTH PRINCIPAL MERIDIAN,
COUNTY OF EL PASO, STATE OF COLORADO



KEYNOTES:

- 01.01 CONCRETE PANEL JOINT WITH 3/4" CHAMFERED EDGES, BACKER ROD & SEALANT FULL LENGTH.
- 01.02 3/4" x 2 1/4" REVEAL, PAINTED.
- 01.03 US FORMLINER 2/156 STEINWALD.
- 01.04 US FORMLINER 2/75 KOCHER - ORIENTATION HORIZONTAL.
- 01.10 INSULATED TINTED GLAZING IN ANODIZED ALUMINUM STOREFRONT SYSTEM. SEE FINISH LEGEND.
- 01.14 SITE CAST TILT-UP CONCRETE PANEL, PAINTED WITH MEDIUM TEXTURED PAINT. SEE EXTERIOR FINISH LEGEND FOR SPECIFIC COLORS.
- 01.40 PREFINISHED METAL CAP FLASHING, TYP @ ALL CONCRETE PANELS.



EXTERIOR FINISH LEGEND

KEY	DESCRIPTION	IMAGE	MANUFACTURER	REMARKS / COMMENTS
(P1)	EXTERIOR PAINT		GLIDDEN #50YR 18/223 "SOFT COPPER"	MEDIUM TEXTURE @ CONC. PANEL
(F1)	CONCRETE TILT UP ACCENT		US FORMLINER	2/156 STEINWALD ROCK PATTERN
(P2)	EXTERIOR PAINT		GLIDDEN #10YY 41/175 "HIGHLAND PLAINS"	MEDIUM TEXTURE @ CONC. PANEL
(P3)	EXTERIOR PAINT		GLIDDEN #20YY 33/145 "DEACON'S BENCH"	MEDIUM TEXTURE @ CONC. PANEL
(P4)	EXTERIOR PAINT		GLIDDEN #20YY 51/098 "LEGEND TAN"	MEDIUM TEXTURE @ CONC. PANEL
(P5)	EXTERIOR PAINT		GLIDDEN #30YY 46/036 "ZEPPELIN"	MEDIUM TEXTURE @ CONC. PANEL
(F2)	CONCRETE TILT UP ACCENT		US FORMLINER	2/75 KOCHER - HORIZONTAL
(P6)	EXTERIOR PAINT		GLIDDEN #30YY 33/047 "OLD MONTEREY"	MEDIUM TEXTURE @ CONC. PANEL
(P7)	EXTERIOR PAINT		GLIDDEN #30YY 20/029 "MANSARD STONE"	MEDIUM TEXTURE @ CONC. PANEL
(P8)	EXTERIOR PAINT		GLIDDEN #30YY 10/038 "FOREST BLACK"	MEDIUM TEXTURE @ CONC. PANEL
(P9)	EXTERIOR PAINT		GLIDDEN #30YY 05/044 "THE DARK SIDE"	MEDIUM TEXTURE @ CONC. PANEL
(G1)	GLAZING		VITRO GLASS - SOLARGRAY	
(AL)	STOREFRONT FRAME		DARK BRONZE	

CITY FILE NO: #####

REVISIONS	DESCRIPTION

DRAWN	CBW
CHECKED	BS
DESIGNED	KS
FILENAME	XX-XXXX

SITE DEVELOPMENT PLAN
THE ROCK COMMERCE CENTER
EXTERIOR ELEVATIONS



architecture
planning
interiors

2000 West Littleton Blvd
Littleton, Colorado 80120
P. 303.758.8877 F. 303.758.2294
www.igarch.com

JOB NO.	XX-XXXX
SCALE	AS SHOWN
DATE	07/28/2023
SHEETS	24
SHEET	20

SITE DEVELOPMENT PLAN THE ROCK COMMERCE CENTER

A PORTION OF THE SOUTHWEST QUARTER OF THE NORTHWEST QUARTER OF SECTION 11,
TOWNSHIP 11 SOUTH, RANGE 67 WEST OF THE SIXTH PRINCIPAL MERIDIAN,
COUNTY OF EL PASO, STATE OF COLORADO



② NORTH END CAP PERSPECTIVE
SCALE: 1/2" = 1'-0"



① SOUTH TENANT PERSPECTIVE
SCALE: 1/2" = 1'-0"

REVISIONS	DESCRIPTION

BY	
DATE	
DRAWN	CBW
CHECKED	BS
DESIGNED	KS
FILENAME	XX-XXXX

SITE DEVELOPMENT PLAN
 THE ROCK COMMERCE CENTER
 EXTERIOR PERSPECTIVES



■ architecture
 ■ planning
 ■ interiors
 2000 West Littleton Blvd
 Littleton, Colorado 80120
 P. 303.738.8877 F. 303.738.2294
 www.igarch.com

JOB NO.	XX-XXXX
SCALE	AS SHOWN
DATE	07/28/2023
SHEETS	24
SHEET	21

CITY FILE NO: #####