

SF1915

2019 Financial Assurance Estimate Form
(with pre-plat construction)

Updated: 6/7/2019

PROJECT INFORMATION		
EGP Forest Lakes Fil No. 5	8/20/2019	
Project Name:	Date	PCD File No.

Description	Quantity	Units	Unit Cost	Total	(with Pre-Plat Construction)	
					% Complete	Remaining
SECTION 1 - GRADING AND EROSION CONTROL (Construction and Permanent BMPs)						
* Earthwork						
less than 1,000; \$5,300 min		CY	\$ 8.00	= \$ -		\$ -
1,000-5,000; \$8,000 min		CY	\$ 6.00	= \$ -		\$ -
5,001-20,000; \$30,000 min		CY	\$ 5.00	= \$ -		\$ -
20,001-50,000; \$100,000 min		CY	\$ 3.50	= \$ -		\$ -
50,001-200,000; \$175,000 min		CY	\$ 2.50	= \$ -		\$ -
greater than 200,000; \$500,000 min		CY	\$ 2.00	= \$ -		\$ -
* Permanent Seeding (inc. noxious weed mgmt.)		AC	\$ 800.00	= \$ -		\$ -
* Mulching		AC	\$ 750.00	= \$ -		\$ -
* Permanent Erosion Control Blanket		SY	\$ 6.00	= \$ -		\$ -
* Permanent Pond/BMP Construction		CY	\$ 20.00	= \$ -		\$ -
* Permanent Pond/BMP (Spillway)		EA		= \$ -		\$ -
* Permanent Pond/BMP (Outlet Structure)		EA		= \$ -		\$ -
Safety Fence		LF	\$ 3.00	= \$ -		\$ -
Temporary Erosion Control Blanket		SY	\$ 3.00	= \$ -		\$ -
Vehicle Tracking Control		EA	\$ 2,370.00	= \$ -		\$ -
Silt Fence		LF	\$ 2.50	= \$ -		\$ -
Temporary Seeding		AC	\$ 628.00	= \$ -		\$ -
Temporary Mulch		AC	\$ 750.00	= \$ -		\$ -
Erosion Bales		EA	\$ 25.00	= \$ -		\$ -
Erosion Logs/Straw Waddle		LF	\$ 5.00	= \$ -		\$ -
Rock Check Dams		EA	\$ 500.00	= \$ -		\$ -
Inlet Protection		EA	\$ 167.00	= \$ -		\$ -
Sediment Basin		EA	\$ 1,762.00	= \$ -		\$ -
Concrete Washout Basin		EA	\$ 900.00	= \$ -		\$ -
[insert items not listed but part of construction plans]						
MAINTENANCE (35% of Construction BMPs)				= \$ -		\$ -
Section 1 Subtotal				= \$ -		\$ -

Provide quantity for
the permanent pond
(EDB and Rain
Garden)

provide quantities for
Concrete Washout
Basin

Include inlet protection with Filing 5 and make sure the
inlet protection is not a part of the early grading FAE.

To summarize, the EGP is approval for grading only and
does not include the installation of stormsewer and inlets.

The final plat is where the construction plans for storm
sewers and inlets are approved therefore FAE for these
items are required.

SECTION 2 - PUBLIC IMPROVEMENTS *						
ROADWAY IMPROVEMENTS						
Construction Traffic Control		0	LS	= \$ -		\$ -
Aggregate Base Course (135 lbs/cf)			Tons	= \$ 29,100.00		\$ 29,100.00
Aggregate Base Course (135 lbs/cf)			SY	= \$ 15,000.00		\$ 15,000.00
Asphalt Pavement (3" thick)			SY	= \$ 15,000.00		\$ 15,000.00
Asphalt Pavement (4" thick)			SY	= \$ 29,000.00		\$ 29,000.00
Asphalt Pavement (6" thick)			SY	= \$ 29,000.00		\$ 29,000.00
Asphalt Pavement (147 lbs/cf) ___" thick			Tons	= \$ 88,000.00		\$ 88,000.00
Raised Median, Paved			EA	= \$ 800.00		\$ 800.00
Regulatory Sign/Advisory Sign			EA	= \$ 1,800.00		\$ 1,800.00
Guide/Street Name Sign			EA	= \$ 1,800.00		\$ 1,800.00
Epoxy Pavement Marking			EA	= \$ 1,800.00		\$ 1,800.00
Thermoplastic Pavement Marking			EA	= \$ 1,800.00		\$ 1,800.00
Barricade - Type 3		2	EA	= \$ 200.00		\$ 400.00
Delineator - Type I			EA	= \$ 24.00		\$ -
Curb and Gutter, Type A (6" Vertical)	5,066	LF	\$ 30.00	= \$ 151,980.00		\$ 151,980.00
Curb and Gutter, Type B (Median)	761	LF	\$ 30.00	= \$ 22,830.00		\$ 22,830.00
Curb and Gutter, Type C (Ramp)	2,212	LF	\$ 30.00	= \$ 66,360.00		\$ 66,360.00
4" Sidewalk (common areas only)	3,920	SY	\$ 48.00	= \$ 188,160.00		\$ 188,160.00
5" Sidewalk		SY	\$ 60.00	= \$ -		\$ -
6" Sidewalk		SY	\$ 72.00	= \$ -		\$ -
8" Sidewalk		SY	\$ 96.00	= \$ -		\$ -
Pedestrian Ramp	6	EA	\$ 1,150.00	= \$ 6,900.00		\$ 6,900.00
Cross Pan, local (8" thick, 6' wide to include return)		LF	\$ 61.00	= \$ -		\$ -
Cross Pan, collector (9" thick, 8' wide to include return)		LF	\$ 92.00	= \$ -		\$ -
Curb Chase		EA	\$ 1,480.00	= \$ -		\$ -
Guardrail Type 3 (W-Beam)	325	LF	\$ 49.00	= \$ 15,925.00		\$ 15,925.00
Guardrail Type 7 (Concrete)		LF	\$ 72.00	= \$ -		\$ -
Guardrail End Anchorage	2	EA	\$ 2,098.00	= \$ 4,196.00		\$ 4,196.00
Guardrail Impact Attenuator		EA	\$ 3,767.00	= \$ -		\$ -
Sound Barrier Fence (CMU block, 6' high)		LF	\$ 78.00	= \$ -		\$ -
Sound Barrier Fence (panels, 6' high)		LF	\$ 80.00	= \$ -		\$ -
Electrical Conduit, Size =		LF	\$ 16.00	= \$ -		\$ -
Traffic Signal, complete intersection		EA	\$ 425,000	= \$ -		\$ -
[insert items not listed but part of construction plans]						

PROJECT INFORMATION							
EGP Forest Lakes Fil No. 5		8/20/2019					
Project Name:		Date		PCD File No.			
Description	Quantity	Units	Unit Cost		Total	(with Pre-Plat Construction) % Complete	Remaining
STORM DRAIN IMPROVEMENTS							
Concrete Box Culvert (M Standard), Size (W x H)		LF	=	\$	-		\$ -
18" Reinforced Concrete Pipe	1,314	LF	\$ 65.00	=	\$ 85,410.00		\$ 85,410.00
24" Reinforced Concrete Pipe	313	LF	\$ 78.00	=	\$ 24,414.00		\$ 24,414.00
30" Reinforced Concrete Pipe	1,328	LF	\$ 97.00	=	\$ 128,816.00		\$ 128,816.00
36" Reinforced Concrete Pipe	210	LF	\$ 120.00	=	\$ 25,200.00		\$ 25,200.00
42" Reinforced Concrete Pipe	943	LF	\$ 160.00	=	\$ 150,880.00		\$ 150,880.00
48" Reinforced Concrete Pipe		LF	\$ 195.00	=	\$ -		\$ -
54" Reinforced Concrete Pipe		LF	\$ 245.00	=	\$ -		\$ -
60" Reinforced Concrete Pipe		LF	\$ 288.00	=	\$ -		\$ -
66" Reinforced Concrete Pipe		LF	\$ 332.00	=	\$ -		\$ -
72" Reinforced Concrete Pipe		LF	\$ 380.00	=	\$ -		\$ -
18" Corrugated Steel Pipe		LF	\$ 84.00	=	\$ -		\$ -
24" Corrugated Steel Pipe		LF	\$ 96.00	=	\$ -		\$ -
30" Corrugated Steel Pipe		LF	\$ 122.00	=	\$ -		\$ -
36" Corrugated Steel Pipe		LF	\$ 147.00	=	\$ -		\$ -
42" Corrugated Steel Pipe		LF	\$ 168.00	=	\$ -		\$ -
48" Corrugated Steel Pipe		LF	\$ 178.00	=	\$ -		\$ -
54" Corrugated Steel Pipe		LF	\$ 260.00	=	\$ -		\$ -
60" Corrugated Steel Pipe		LF	\$ 280.00	=	\$ -		\$ -
66" Corrugated Steel Pipe		LF	\$ 340.00	=	\$ -		\$ -
72" Corrugated Steel Pipe		LF	\$ 400.00	=	\$ -		\$ -
78" Corrugated Steel Pipe		LF	\$ 460.00	=	\$ -		\$ -
Flared End Section (FES) RCP Size = 18 (unit cost = 6x pipe unit cost)	1	EA	\$ 390.00	=	\$ 390.00		\$ 390.00
Flared End Section (FES) RCP Size = 30 (unit cost = 6x pipe unit cost)	1	EA	\$ 582.00	=	\$ 582.00		\$ 582.00
Flared End Section (FES) CSP Size = 36 (unit cost = 6x pipe unit cost)	1	EA	\$ 720.00	=	\$ 720.00		\$ 720.00
End Treatment- Headwall	2	EA	\$ 50,000.00	=	\$ 100,000.00		\$ 100,000.00
End Treatment- Wingwall	4	EA	\$ 30,000.00	=	\$ 120,000.00		\$ 120,000.00
End Treatment - Cutoff Wall		EA	=	\$ -			\$ -
Curb Inlet (Type R) L=5', Depth < 5'	4	EA	\$ 5,542.00	=	\$ 22,168.00		\$ 22,168.00
Curb Inlet (Type R) L=5', 5' ≤ Depth < 10'		EA	\$ 7,188.00	=	\$ -		\$ -
Curb Inlet (Type R) L=5', 10' ≤ Depth < 15'		EA	\$ 8,345.00	=	\$ -		\$ -
Curb Inlet (Type R) L=10', Depth < 5'	3	EA	\$ 7,627.00	=	\$ 22,881.00		\$ 22,881.00
Curb Inlet (Type R) L=10', 5' ≤ Depth < 10'	1	EA	\$ 7,861.00	=	\$ 7,861.00		\$ 7,861.00
Curb Inlet (Type R) L=10', 10' ≤ Depth < 15'		EA	\$ 9,841.00	=	\$ -		\$ -
Curb Inlet (Type R) L=15', Depth < 5'	3	EA	\$ 9,918.00	=	\$ 29,754.00		\$ 29,754.00
Curb Inlet (Type R) L=15', 5' ≤ Depth < 10'		EA	\$ 10,633.00	=	\$ -		\$ -
Curb Inlet (Type R) L=15', 10' ≤ Depth < 15'		EA	\$ 11,627.00	=	\$ -		\$ -
Curb Inlet (Type R) L=20', Depth < 5'		EA	\$ 10,570.00	=	\$ -		\$ -
Curb Inlet (Type R) L=20', 5' ≤ Depth < 10'		EA	\$ 11,667.00	=	\$ -		\$ -
Grated Inlet (Type C), Depth < 5'	2	EA	\$ 4,640.00	=	\$ 9,280.00		\$ 9,280.00
Grated Inlet (Type D), Depth < 5'	2	EA	\$ 5,731.00	=	\$ 11,462.00		\$ 11,462.00
Storm Sewer Manhole, Box Base	5	EA	\$ 11,627.00	=	\$ 58,135.00		\$ 58,135.00
Storm Sewer Manhole, Slab Base	5	EA	\$ 6,395.00	=	\$ 31,975.00		\$ 31,975.00
Geotextile (Erosion Control)	290	SY	\$ 6.00	=	\$ 1,740.00		\$ 1,740.00
Rip Rap, d50 size from 6" to 24"	193	Tons	\$ 80.00	=	\$ 15,440.00		\$ 15,440.00
Rip Rap, Grouted		Tons	\$ 95.00	=	\$ -		\$ -
Drainage Channel Construction, Size (W x H)		LF	=	\$ -			\$ -
Drainage Channel Lining, Concrete		CY	\$ 570.00	=	\$ -		\$ -
Drainage Channel Lining, Rip Rap		CY	\$ 112.00	=	\$ -		\$ -
Drainage Channel Lining, Grass		AC	\$ 1,469.00	=	\$ -		\$ -
Drainage Channel Lining, Other Stabilization			=	\$ -			\$ -
[insert items not listed but part of construction plans]			=	\$ -			\$ -
Section 2 Subtotal					= \$ 1,712,728.00		\$ 1,712,728.00

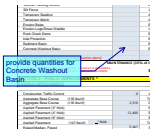
* - Subject to defect warranty financial assurance. A minimum of 20% shall be retained until final acceptance (MAXIMUM OF 80% COMPLETE ALLOWED)

PROJECT INFORMATION							
EGP Forest Lakes Fil No. 5		8/20/2019					
Project Name:		Date		PCD File No.			
Description	Quantity	Units	Unit Cost		Total	(with Pre-Plat Construction) % Complete Remaining	
SECTION 3 - COMMON DEVELOPMENT IMPROVEMENTS (Private or District and NOT Maintained by EPC) **							
ROADWAY IMPROVEMENTS							
				=	\$ -		\$ -
				=	\$ -		\$ -
				=	\$ -		\$ -
				=	\$ -		\$ -
				=	\$ -		\$ -
				=	\$ -		\$ -
STORM DRAIN IMPROVEMENTS (Exception: Permanent Pond/BMP shall be itemized under Section 1)							
				=	\$ -		\$ -
				=	\$ -		\$ -
				=	\$ -		\$ -
				=	\$ -		\$ -
				=	\$ -		\$ -
WATER SYSTEM IMPROVEMENTS							
Water Main Pipe (PVC), Size 8"	3,320	LF	\$ 64.00	=	\$ 212,480.00		\$ 212,480.00
Water Main Pipe (Ductile Iron), Size 8"		LF	\$ 75.00	=	\$ -		\$ -
Gate Valves, 8"	9	EA	\$ 1,858.00	=	\$ 16,722.00		\$ 16,722.00
Fire Hydrant Assembly, w/ all valves	6	EA	\$ 6,597.00	=	\$ 39,582.00		\$ 39,582.00
Water Service Line Installation, inc. tap and valves	33	EA	\$ 1,324.00	=	\$ 43,692.00		\$ 43,692.00
Fire Cistern Installation, complete		EA		=	\$ -		\$ -
				=	\$ -		\$ -
[insert items not listed but part of construction plans]				=	\$ -		\$ -
SANITARY SEWER IMPROVEMENTS							
Sewer Main Pipe (PVC), Size 8"	3,130	LF	\$ 64.00	=	\$ 200,320.00		\$ 200,320.00
Sanitary Sewer Manhole, Depth < 15 feet	3	EA	\$ 4,386.00	=	\$ 13,158.00		\$ 13,158.00
Sanitary Service Line Installation, complete	33	EA	\$ 1,402.00	=	\$ 46,266.00		\$ 46,266.00
Sanitary Sewer Manhole, Depth > 15 feet	5	EA	\$ 5,000.00	=	\$ 25,000.00		\$ 25,000.00
				=	\$ -		\$ -
[insert items not listed but part of construction plans]				=	\$ -		\$ -
LANDSCAPING IMPROVEMENTS (For subdivision specific condition of approval, or PUD)							
		EA		=	\$ -		\$ -
		EA		=	\$ -		\$ -
		EA		=	\$ -		\$ -
		EA		=	\$ -		\$ -
		EA		=	\$ -		\$ -
** - Section 3 is not subject to defect warranty requirements				Section 3 Subtotal	= \$ 597,220.00		\$ 597,220.00
AS-BUILT PLANS (Public Improvements inc. Permanent WQCV BMPs)		LS		=	\$ -		\$ -
POND/BMP CERTIFICATION (inc. elevations and volume calculations)		LS		=	\$ -		\$ -
Total Construction Financial Assurance						\$ 2,309,948.00	
(Sum of all section subtotals plus as-builts and pond/BMP certification)							
Total Remaining Construction Financial Assurance (with Pre-Plat Construction)						\$ 2,309,948.00	
(Sum of all section totals less credit for items complete plus as-builts and pond/BMP certification)							
Total Defect Warranty Financial Assurance						\$ 342,545.60	
(20% of all items identified as (*). To be collateralized at time of preliminary acceptance)							

Approvals	
I hereby certify that this is an accurate and complete estimate of costs for the work as shown on the Grading and Erosion Control Plan and Construction Drawings associated with the Project.	
<div> <div>Engineer (P.E. Seal Required)</div> <div>Approved by Owner / Applicant</div> <div>Approved by El Paso County Engineer / ECM Administrator</div> </div> <div> <div></div> <div>Date</div> <div>Date</div> </div>	

FAE V_1 redlines.pdf Markup Summary [PrimarySort] 10-10-2019

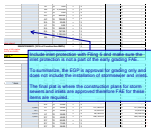
10/9/2019 9:38:18 AM (1)



Subject: Callout
Page Label: 1
Author: dsdlaforce
Date: 10/9/2019 9:38:18 AM
Status:
Color: ■
Layer:
Space:

provide quantities for Concrete Washout Basin

10/9/2019 9:33:56 AM (1)



Subject: Callout
Page Label: 1
Author: dsdlaforce
Date: 10/9/2019 9:33:56 AM
Status:
Color: ■
Layer:
Space:

Include inlet protection with Filing 5 and make sure the inlet protection is not a part of the early grading FAE.

To summarize, the EGP is approval for grading only and does not include the installation of stormsewer and inlets.

The final plat is where the construction plans for storm sewers and inlets are approved therefore FAE for these items are required.

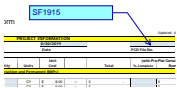
10/7/2019 9:51:18 AM (1)



Subject: Cloud+
Page Label: 1
Author: dsdlaforce
Date: 10/7/2019 9:51:18 AM
Status:
Color: ■
Layer:
Space:

Provide quantity for the permanent pond (EDB and Rain Garden)

10/7/2019 9:45:28 AM (1)



Subject: Callout
Page Label: 1
Author: dsdlaforce
Date: 10/7/2019 9:45:28 AM
Status:
Color: ■
Layer:
Space:

SF1915