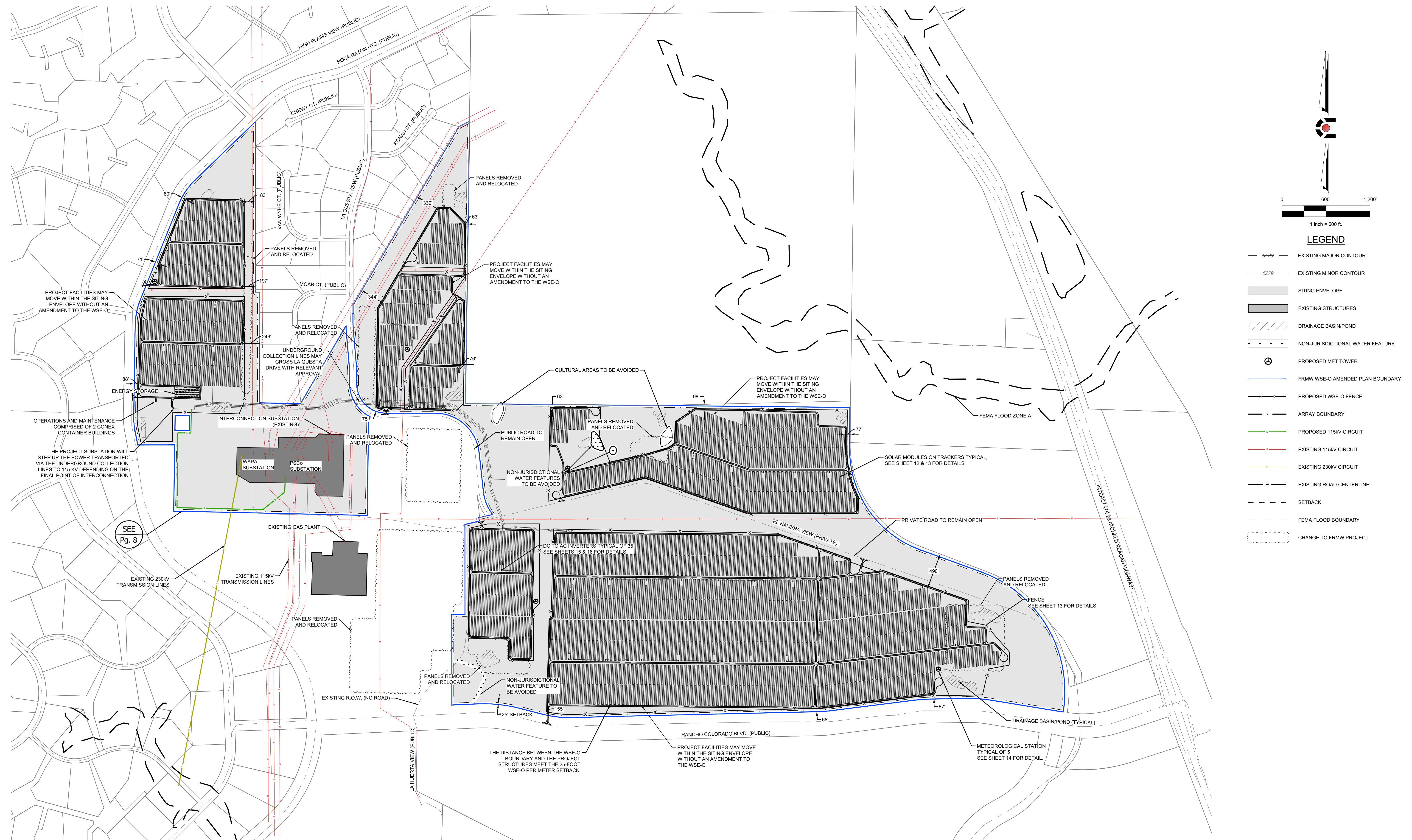


WIND/SOLAR ENERGY GENERATION OVERLAY (WSE-O) PLAN AMENDMENT (WSEO-20-1) FOR THE FRONT RANGE-MIDWAY SOLAR PROJECT

PORTIONS OF SECTIONS 17, 20, 21, & 22, TOWNSHIP 17 SOUTH, RANGE 65 WEST OF THE 6TH PRINCIPAL MERIDIAN,
EL PASO COUNTY, COLORADO



CIVIL ENGINEERING
DEVELOPMENT CONSULTING
NATURAL RESOURCES CONSULTING
LAND SURVEYING
303.703.4444
1950 W. Litchford Blvd., Ste. 109
Littleton, CO 80120



CALL BUSINESS DAYS IN ADVANCE BEFORE YOU DIG, GRADE, OR EXCAVATE FOR THE MARKING OF UNDERGROUND UTILITY LINES.
CORE ASSUMES NO RESPONSIBILITY FOR EXISTING UTILITY UTILITIES SHOWN ON THIS DRAWING HAVE BEEN LOCATED FROM THE BEST AVAILABLE INFORMATION. TO VERIFY THE LOCATION OF ALL UTILITIES PRIOR TO THE COMMENCEMENT OF ANY CONSTRUCTION ACTIVITIES, CONTACT THE UTILITY OWNERS.

DATE	BY	REVISION DESCRIPTION
06/17/20	TP	1 FIRST SUBMITTAL
08/21/20	TP	2 SECOND SUBMITTAL

WSE-O PLAN AMENDMENT (WSEO-20-1)
EL PASO COUNTY, COLORADO
FRONT RANGE-MIDWAY SOLAR PROJECT
SITE LAYOUT

DESIGNED BY: TP
DRAWN BY: TP
CHECKED BY: DB
JOB NO. 19-177
SHEET 7 OF 13

09/24/2020 12:25 PM, X:\19-177 FRMW SOLAR - EARLY ASSISTANCE\CADD\PLANS\FILING 18 SITE LAYOUT.DWG.