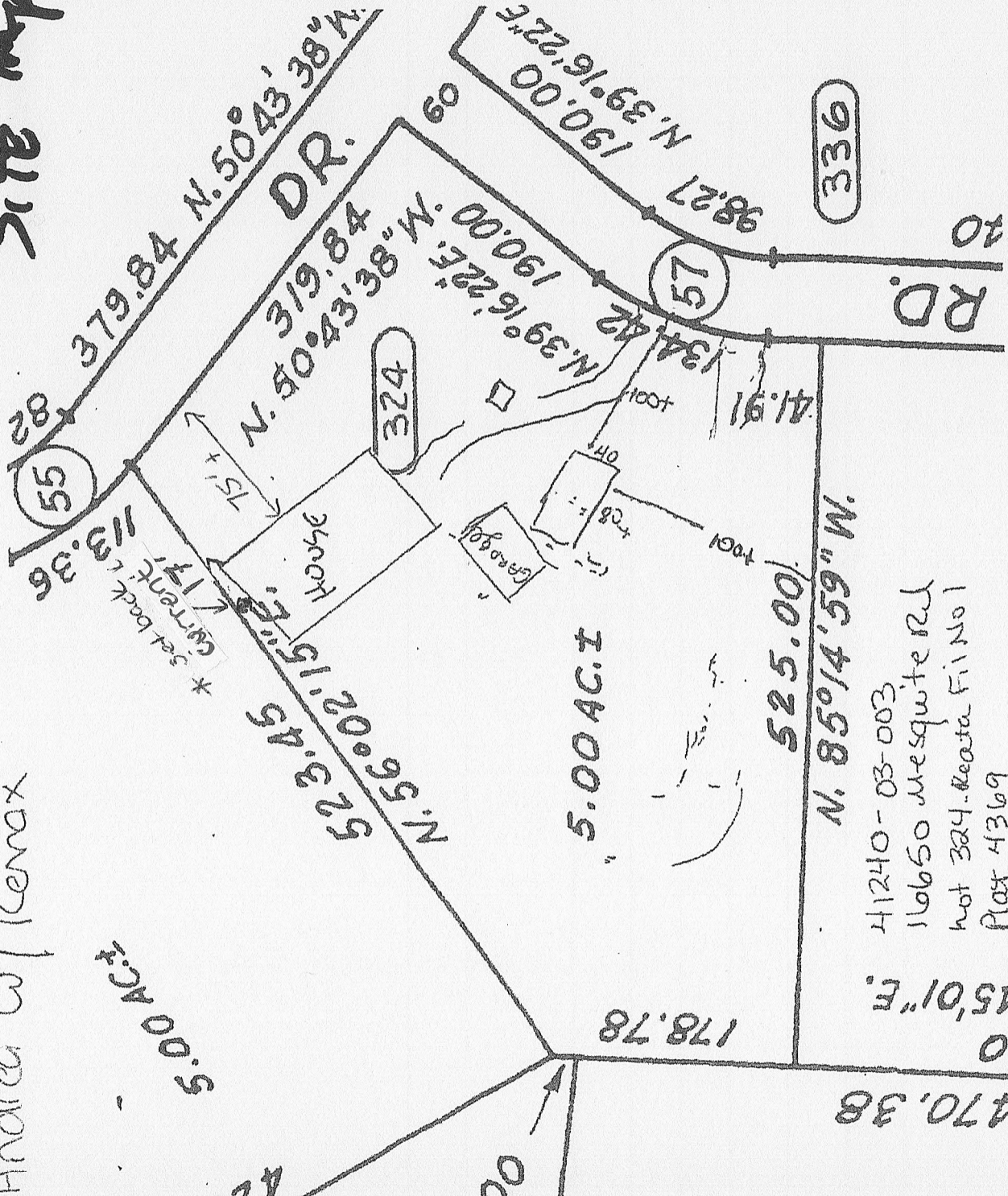


Andrea w/ Remax

SITE MAP



5.00 AC. ±

5.00 AC. ±

525.00'

N. 85°14'59" W.

H1240-03-003
 11665 Mesquite Rd
 Plot 4369
 RR-5
 A61725

APPROVED **DENIED**
 BY mycm DATE 6/12/17
 FOR 3200th Place
 NOTES Subject to inspection
4/16/17

- Planning and Community Development
- Approvals is contingent upon compliance with all applicable notes on the recorded plat.
- Access permit must be granted by the Planning and Community Development Engineering Division prior to the establishment of a driveway onto a County Road.
- Reversal of blockage of any drainage way is not permitted without the approval of the Planning and Community Development Engineering Division.
- Any approval given by El Paso County does not obviate the need to comply with applicable Federal, State or Local laws and/or regulations.

EL PASO COUNTY
 PLANNING AND COMMUNITY DEVELOPMENT

BESQCP Not Required
 by M on 6/12/17

AG 17-25