



DRAINAGE REPORT

PROJECT: 22A267

**Town of Ramah Wastewater
System Improvements**

PREPARED FOR:

**Town of Ramah
113 S. Commercial Street
Ramah, CO 80832**

PREPARED BY:


**EVstudio, LLC
5335 W. 48th Ave Suite 300
Denver, CO 80212
Prepared By: Timothy Osborn, EIT
Reviewed By: Brian Welch, P.E.
(303) 670-7242 x50**

DATE: October 27, 2023


**Please add "PCD File No.
PPR2325"**

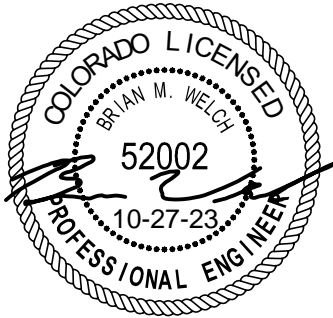
Engineer's Statement:

The Attached Drainage plan and report were prepared under my direction and supervision and are correct to the best of my knowledge and belief. Said drainage report has been prepared according to the criteria established by the EI for drainage reports and said report is in conformity with the master plan of the drainage basin. I accept responsibility for any liability caused by any negligent acts, errors, or omissions on my part in preparing this report.

SIGNATURE: 

Registered Professional Engineer State
of Colorado No. 52002

(Affix Seal)



Unresolved Review 1 Comment:
- Please include the following
drainage report signature blocks.

Owner/Developer's Statement:

I, the owner/developer have read and will comply with all of the requirements specified in this drainage report and plan.

[Name, Title]
[Business Name]
[Address]

Date

El Paso County:

Filed in accordance with the requirements of the Drainage Criteria Manual, Volumes 1 and 2, El Paso County Engineering Criteria Manual and Land Development Code as amended.

Joshua Palmer, P.E.
County Engineer / ECM Administrator

Date

Conditions:

Table of Contents

I.	SITE DESCRIPTION	4
A.	PROJECT NAME AND LOCATION	4
B.	Description of Property	4
II.	DRAINAGE basins and subbasins	5
A.	Major Basin Description	5
B.	Sub-basin Description	6
III.	Drainage design Criteria.....	6
A.	Development Criteria Reference	6
B.	Hydrologic criteria	6
	Water Quality Criteria.....	6
	Water Quality Exclusions	6
	Design Storms	6
IV.	DRAINAGE FACILITY DESIGN	7
A.	General Concept	7
B.	Specific Details.....	7
	Water Quality Compliance.....	7
	Runoff and Release	8
C.	Other Government Agency Requirements	9

Please provide a project scope description in the report.

I. SITE DESCRIPTION

A. PROJECT NAME AND LOCATION

Project/Site Name: Town of Ramah Wastewater System Improvements

Location: Section 1, Township 11 South, Range 61 West of the 6th P.M.

City: Town of Ramah

County: El Paso County

Latitude: 39.1157° N

Longitude: -104.1611° W

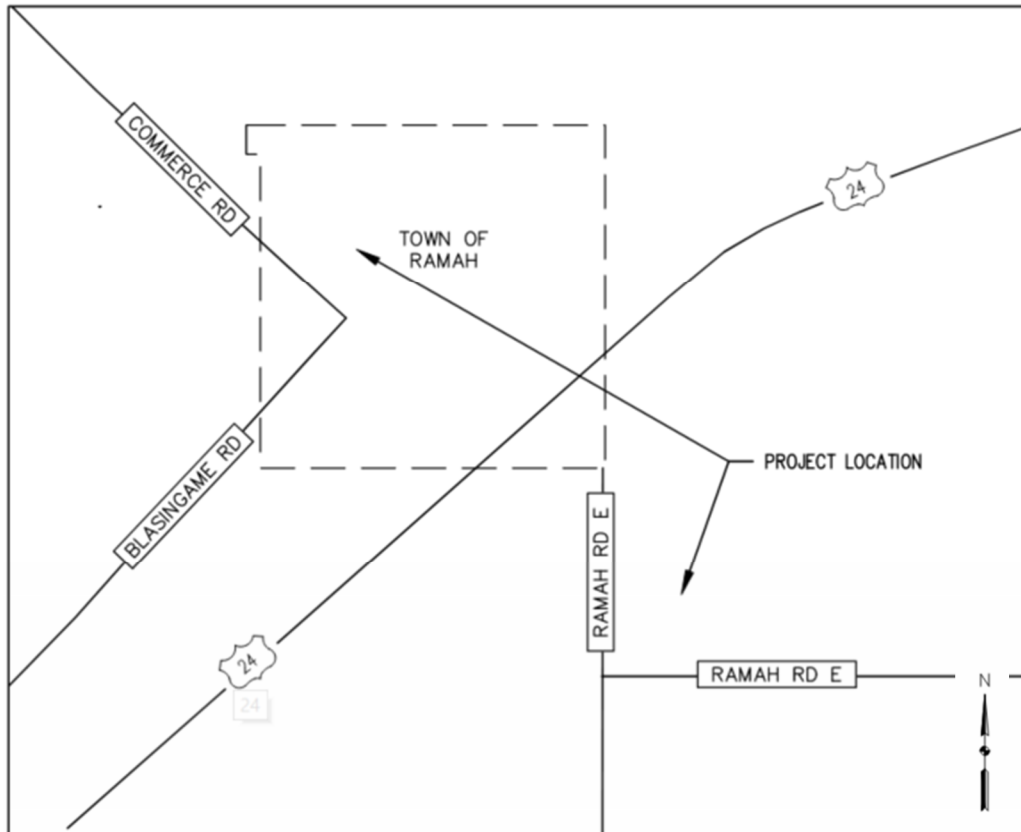


Figure 1. Vicinity Map of Town of Ramah Wastewater System Improvements

The Town of Ramah Wastewater System Improvements is located within Section 1, Township 11 South, Range 61 West of the 6th Principal Meridian, Town of Ramah, County of El Paso, State of Colorado. The site is bounded by an existing street, Ramah Road E, to the south and west. To the west, adjacent to the site is Ramah Cemetery.

B. Description of Property

The site area and the area of the proposed land disturbing activities at the site is approximately 17 acres. The existing vegetation on the property consists primarily of native grasses, shrubs, and weeds with an estimated pre-existing ground cover estimate of 60%. Pre-existing vegetation was determined through the evaluation of satellite imagery of the site. Natural topography at the evaporative pond site slopes to the north towards an unnamed swale (discharges to Big Sandy Creek) at slopes ranging from 2% to 7%. There are no wetlands or receiving waterways within the project area or within 50 feet of the project area.

According to the Geotechnical Engineering Study for the Ramah Wastewater Treatment Plant by Kumar & Associates, Inc. Soils on the site consist of clay with sand (CL) or sandy clay (CL). Because of the predominance of clay in the soil the hydraulic soil group throughout the site will be considered as Class "C".

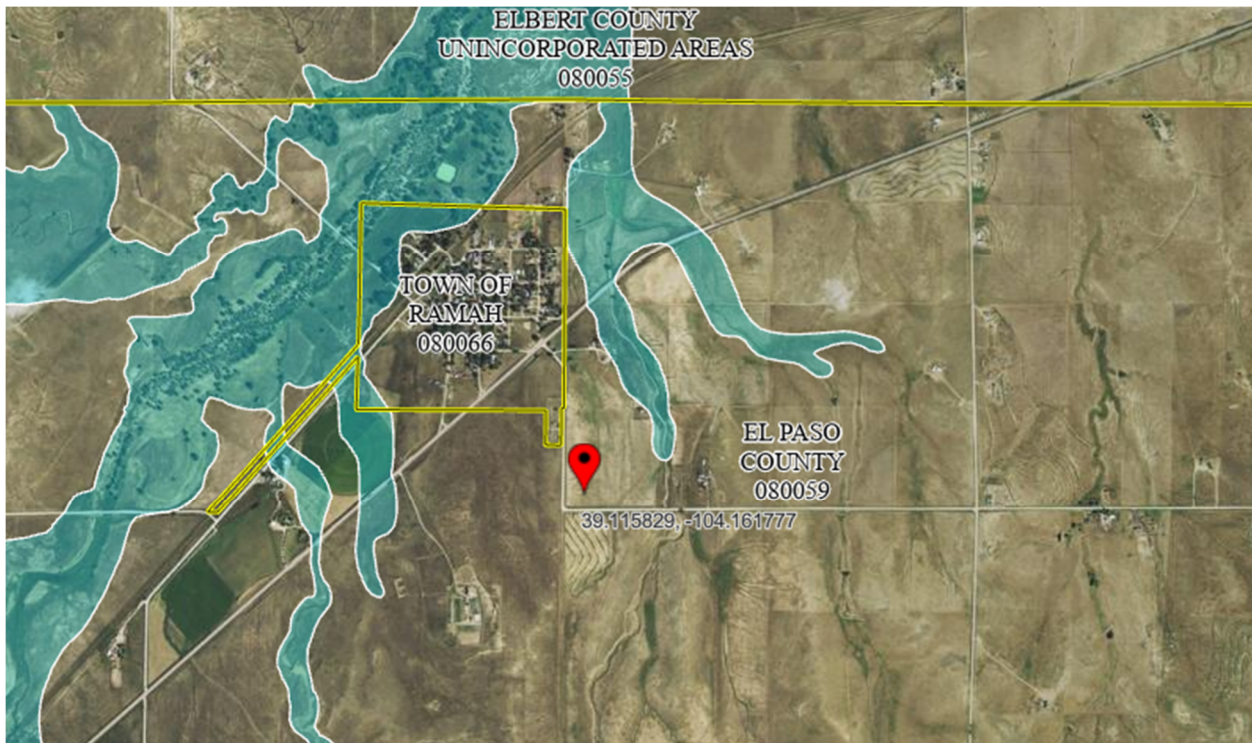
The nearest waterway is Big Sandy Creek and is the property adjacent to a non-perennial stream that leads into the Big Sandy Creek. No construction is planned within the flood plain. Historical runoff from the site enters this tributary and into Big Sandy Creek.

There are no irrigation facilities observed on the site. and there are no other utilities observed on the site.

II. DRAINAGE BASINS AND SUBBASINS

A. Major Basin Description

The Ramah wastewater treatment plant is located inside the watershed of Big Sandy Creek, and it is located adjacent to an unnamed non-perennial stream that flows into Big Sandy creek and is part of the 100-year flood plain. There are no portions of the proposed wastewater treatment plant that are inside the flood plain.



There are no portions of the proposed wastewater treatment plant that are inside the flood plain. The flood plain is located in the plains of Colorado and contains low brush and the occasional tree and continues southeast until it joins the Arkansas River.

Please include that the project area is within the Ramah Drainage Basin, which is an unstudied drainage basin.

The drainage report should discuss existing and developed conditions. Please provide sections for each discussing on-site and off-site basin flow patterns. Discuss impact from off-site basin flows to the development.

B. Sub-basin Description

Runoff from the site starts at the crown of Ramah Road East that surrounds the south and west side of the site. Runoff from Ramah Road enters the site and crosses the site in a northeast direction until reaches the stream that flows north into the Big sandy creek.

Ramah Road that runs along the south and west sides of the project site has a remnant of a roadside ditch that regularly spills flows across the site. Ramah road prevents additional offsite runoff from entering the site.

III. DRAINAGE DESIGN CRITERIA

A. Development Criteria Reference

The drainage plan is developed to follow the El Paso County Engineering Criteria Manual (ECM), the El Paso County Drainage Criteria Manual, and the Mile High Flood District Urban Storm Drainage Criteria Manual.

B. Hydrologic criteria

Unresolved from Submittal 1 - Please include the Four-Step Process (ECM Appendix I.7.2.A.). This includes any exclusions to the process that may apply. Discuss any other permits that cover the evaporation ponds. If a regional WQ facility is utilized as noted on the SWMP, discuss that as well.

Water Quality Criteria

The water quality for the wastewater treatment plant will follow ECM Runoff Reduction standards "The control measures is designed to infiltrate into the ground where site geology permits, evaporate, or evapotranspire a quantity of water equal to 60% of what the calculated Water Quality Control Volume (WQCV) would be if all impervious area for the applicable development site discharged without infiltration" (I.7.1.C.3). Additionally, any area that is excluded or that is outside of the limits of construction will not contribute to the calculation of the WQCV.

Water Quality Exclusions

The installation of a new wastewater main will fall under the Aboveground and Underground Utilities exception "Activities for installation or maintenance of underground utilities or infrastructure that does not permanently alter the terrain, ground cover, or drainage patterns from those present prior to the construction activity. This exclusion includes, but is not limited to, activities to install, replace, or maintain utilities under roadways or other paved areas that return the surface to the same condition" (I.7.1.B.4 ECM).

The utility exclusion will not apply for the lift station, but 20% up to 1ac of development can be excluded per ECM App I.7.1.C.1 - the lift station may qualify as an exclusion under that.

Design Storms

For the purpose of this report the design storm for the site will be based on the 25-year 24-hour design storm (3.39 in.) because of the concurrent requirements for wastewater evaporative ponds. This modification to perspective results in considering a total runoff volume that is greater than the 100-year 1-hour design (2.97 in.) when assuming no infiltration. No infiltration is assumed when sizing the pond because of the proposed clay liner that is designed to prevent wastewater effluent from entering ground water. When calculating the peak runoff, the 100-year 1-hour was chosen because it represents the greatest peak flow generated by the design storm. Rainfall projections are from NOAA Atlas 14 Point Precipitation Frequency Estimates - Simla Station.

There is discussion of a downstream stormwater facility in the SWMP and PBMP, if a downstream WQCV facility is being used it must be discussed and it must be demonstrated that the facility is working as intended and has been designed to accept the flow. Otherwise remove any discussion of a downstream facility.

IV. DRAINAGE FACILITY DESIGN

A. General Concept

The detention area for the wastewater treatment ponds is defined by the crown of the access road that surrounds the ponds. The only runoff that leaves the site is from areas outside of the pond. Because of the berms that surround the proposed ponds there are two flow paths that will surround the site. A swale is proposed on the south side of the site and will direct flows from the road. To the nearby stream. The north half of the site may coincidentally begin to channel flow, but the flows will generally sheet flow northwest along natural drainage patterns into the stream that enters the Big Sandy Creek.

B. Specific Details

Discuss impacts to adjacent properties.

Water Quality Compliance

The water quality criteria that will govern the site is the runoff reduction standard, and this standard requires that at least 60% of the total WQCV from the site is detained and infiltrated or evaporated from the site. The total WQCV is 0.070 acre-feet and is based on the disturbed and non-excluded area, shown with a light green background on the drainage plan. The WQCV generated and contained by the by wastewater treatment ponds is 0.043 acre-feet resulting in 62% of the WQCV from the site to be contained and evaporated from the site.

The areas are divided into off-site (OS) areas and on-site areas (A) to help define and clarify the areas that are counted for the WQCV. All other reporting states the total disturbed (including the sewer line and lift station is 17 ac) verify this number - you do not need to include the other excluded sites in the calc of the WQCV for the disturbed area

	Acres	IMP	WQCV Watershed Inches	WQCV (acre-feet)
Sanitary Ponds (SP)	10.51	7.08%	0.050	0.043
Total Disturbed	18.38	6.42%	0.045	0.070
Percent of WQCV provided				62%

The WQCV was calculated using the MHFD USDCM method found in volume 3 chapter 3.

$$WQCV = A(0.91I^3 - 1.19I^2 + 0.78I)$$

Where:

WQCV = Water Quality Capture Volume (watershed-inches)

A = 1 Based on Table 3-2

I = Imperviousness expressed as a decimal

In addition to 60% of the WQCV being added disturbed areas will be reseeded after construction to reduce erosion surrounding the site.

Runoff and Release

The ponds release water through evaporation only. Because of the shared design use of the wastewater ponds no runoff can be safely released from the ponds. Instead, the ponds are sized to allow for the evaporation of all rain events throughout the year. No Emergency Spillway will be provided. The total runoff from the site.

There are two types of flow paths from the site, and these are labeled on the drainage plan a path 1 and 2.

A-1 + OS-RD-1 with path 1 Represents the north site of the site and contributes to path 1. The majority of this area is spread out and will remain or will be restored to close to existing conditions. This results in the majority of the flow sheet flowing from the site. These area was treated together to calculate the quantity of runoff only.

A-2 + OS-RD-2 Is path 2 and represents the Flows that enter the swale that is built around the south side of the site. OS-RD-2 consists of runoff from the existing road and the area that is not impacted by construction of the site. A-2 consists of the swale the south sides of the outside of the wastewater treatment ponds. All of this runoff collects into the swale.

Table: 1 Runoff Calculations

Basin runoff					
Basin ID	C Values		Runoff (cfs)		Comments
	5-year	100-year	5-year	100-year	
Existing					
EX	0.16	0.50	11.63	84.61	
Basin ID	C Values		Runoff (cfs)		Comments
	5-year	100-year	5-year	100-year	
Proposed					
WWTP	0.19	0.52	8.76	53.76	Contained on site
A-1 + OS-RD-1	0.18	0.52	3.84	24.41	
A-2 + OS-RD-2	0.17	0.51	4.07	27.75	
Total Detained			8.76	53.76	
Total Outflow			7.92	52.16	

The runoff generated by the wastewater treatment ponds (WWTP) will be fully detained as required by CDPHE Wastewater Design Criteria: resulting outflow of 52.16 CFS will come from the site. Resulting in the total runoff from the major storm will always be less than existing conditions. The primary purpose of

the ponds is wastewater treatment and the detention and evaporation of runoff from the wastewater treatment ponds is regulated by the Colorado Department of Public Health and Environment.

C. Other Government Agency Requirements

The design for the wastewater treatment ponds follows the Colorado Department of Public Health and Environment (CDPHE) Wastewater Design Criteria Policy which lays out the requirements for the Wastewater treatment ponds and dictates the requirements for the evaporation calculations. Calculations for the pond sizing can be found in Appendix B.

Please include a section with all referenced criteria used to prepare the drainage report.

Include a section addressing drainage basin fees. Ramah Drainage Basin is an unstudied basin and does not currently have any fees for developments. Note: drainage fees are not applicable to non-platting projects.

Please include a cost estimate for all proposed facilities.

Please confirm the existing and proposed downstream drainage facilities have the ability to convey developed runoff from the proposed development and will not adversely impact adjacent properties.

Please include calculations for proposed ditch located near the lift station and provide the minimum size and slope required for the ditch to adequately handle flows.

APPENDIX A: HYDROLOGIC COMPUTATIONS

PROJECT: Element Eng - Ramah Lift Station
 SUBJECT: Imperviousness and Runoff C Calculations

JOB #: 22A267
 DATE: 10/26/2023
 BY: TRO

Basin Name	Square Footage	Acres	Pasture/Meadow		Paved		Gravel		Soil Type "C" Composite Runoff Factors		
			A&B	C&D	A&B	C&D	A&B	C&D	C ₅	C ₁₀₀	I %
			SQ-FT	SQ-FT	SQ-FT	SQ-FT	SQ-FT	SQ-FT			
EXISTING CONDITIONS											
EX	1,203,641	27.63	0	1186406	0	0	0	17235	0.16	0.50	1.15%
PROPOSED CONDITIONS											
WWTP	457,636	10.51	0	417,141	0	0	0	40,495	0.19	0.52	7.08%
A-1	223,756	5.14	0	212,311	0	0	0	11,445	0.17	0.51	0.00%
A-2	119,275	2.74	0	106,984	0	0	0	12,291	0.20	0.52	0.00%
OS RD-1	173,419	3.98	0	156,184	0	0	0	17,235	0.20	0.52	0.00%
OS-RD-2	229,555	5.27	0	227,488	0	0	0	2,067	0.15	0.50	0.00%
al Disturb	800,667	18.38	0	736,437	0	0	0	64,231	0.19	0.52	0.00%
Total Basin	1,203,641	27.63	0	1,120,109	0	0	0	83,533	0.18	0.52	0.00%

Lans Use	Imp	Type C 5-year		Type C 100-year	
		HSG A&B	HSG C&D	HSG A&B	HSG C&D
Paved	100%	0.90	0.90	0.96	0.96
Gravel	80%	0.59	0.63	0.70	0.74
Pasture/M	0%	0.08	0.15	0.35	0.50

	Acres	IMP	WQCV Watershed Inches	WQCV (acre-feet)
WWTP	10.51	7.08%	0.050	0.043
Total Disturbed	18.38	6.42%	0.045	0.070
Percent of WQCV provided				62%
$WQCV = a(0.91I^3 - 1.19I^2 + 0.78I)$				

TIME OF CONCENTRATION

Basin No.	Area (acres)	5Yr. co-eff.	TIME (Tt) (Max. 300')					TRAVEL TIME (Tt)					Tc CHECK (Urbanized Basins)			FINAL Tc	Time to Peak**	Remarks	
			Upstream Elevations	Downstream Elevations	Dist. (ft)	Slope (%)	Tt (min)	Upstream Elevations	Downstream Elevations	Dist. (ft)	Slope (%)	Vel. (fps)	Tt (min)	Tc	Length (ft)	Tc (MAX)	Tc (min)		Peak** Flow
EXISTING																			
EX	27.63	0.16	6166	6145	300	7.0	18.1	6145	6121	1250	1.9	1	0	66.3	84.4	1560	18.6	18.6	18.6
PROPOSED																			
WWTP	10.51	0.19			20	33.0	2.4			100	0.5	3	1	3.3	5.7	120	10.7	5.7	5.7
1 + OS-RD	9.12	0.17	6154	6137	208	8.2	12.2	6137	6115	2525	0.9	4	1	41.3	53.5	2733	25.2	25.2	25.2
2 + OS-RD	8.01	0.20	6153	6138	203	7.4	12.6	6138	6121	660	2.6	5	2	4.5	17.1	863	14.8	14.8	14.8

**NOTE: AURORA REQUIRES MIN. Tc=10 MIN. FOR NON-URBANIZED & Tc=5 MIN. FOR UBRANIZED

*Type of Land Surface for Overland Travel Time

VELOCITY COEFFICIENTS

- 1 = Heavy Meadow
- 2 = Tillage / Field
- 3 = Short pasture & lawns
- 4 = Nearly bare ground
- 5 = Grassed waterway
- 6 = Paved areas and shallow paved swales

- 1 2.5
- 2 5
- 3 7
- 4 10
- 5 15
- 6 20

Please show entire label.

Please revise to El Paso County Drainage Criteria Manual.

The travel length appears to be similar to RD-2 and A-2. Please verify Tc.

**STANDARD FORM SF-3
STORM DRAINAGE SYSTEM DESIGN
(RATIONAL METHOD PROCEDURE)**

CALCULATED BY: TRO
DATE: 10/26/23
CHECKED BY: BMW

JOB NO: 22A267
PROJECT: Element Eng - Ramah Lift Station
DESIGN STORM: 2 Year

BASIN	AREA DESIG.	DIRECT RUNOFF						REMARKS
		AREA (Acres)	RUNOFF COEFF	Tc (min)	CA (Acres)	I (in/hour)	Q (cfs)	
EX	EX	27.63	0.16	18.61	4.33	2.68	11.63	
WWTP	WWTP	10.51	0.19	5.69	2.02	4.33	8.76	
A-1 + OS-RD-1	A-1 + OS-RD-1	9.12	0.18	25.18	1.68	2.28	3.84	
A-2 + OS-RD-2	A-2 + OS-RD-2	8.01	0.17	14.79	1.36	3.00	4.07	

**STANDARD FORM SF-3
STORM DRAINAGE SYSTEM DESIGN
(RATIONAL METHOD PROCEDURE)**

CALCULATED BY: TRO
DATE: 10/26/23
CHECKED BY: BMW

JOB NO:
PROJECT:
DESIGN STORM:

22A267
Element Eng - Ramah Lift Station
100 YEAR

BASIN	AREA DESIG.	DIRECT RUNOFF		Tc (min)	C A (Acres)	I (in/hour)	Q (cfs)	REMARKS
		AREA (Acres)	RUNOFF COEFF					
EX	EX	27.63	0.50	18.61	13.91	6.08	84.61	
WWTP	WWTP	10.51	0.52	5.69	5.48	9.82	53.76	All runoff contained on site.
+ OS-R1	+ OS-RD	9.12	0.52	25.18	4.72	5.18	24.41	
+ OS-R2	+ OS-RD	8.01	0.51	14.79	4.08	6.80	27.75	

Please revise column width to show entire basin name.

APPENDIX B: HYDRAULIC CALCULATIONS

**Town of Ramah
Evaporation Pond Calculations**

Table of Contents

1. Precipitation and Evaporation Data
2. Evaporation Pond Design
3. Water Balance - Design Operating Conditions
4. Water Balance - 25-Year 24 Hour Precipitation Event Conditions

1. Precipitation and Evaporation Data

Month	Precipitation (in)	Evaporation Distribution	Evaporation Rate (in)
January	0.34	3.0%	1.41
February	0.36	3.5%	1.645
March	0.97	5.5%	2.585
April	1.675	9.0%	4.23
May	2.37	12.0%	5.64
June	2.085	14.5%	6.815
July	2.775	15.0%	7.05
August	2.805	13.5%	6.345
September	1.29	10.0%	4.7
October	0.88	7.0%	3.29
November	0.57	4.0%	1.88
December	0.385	3.0%	1.41
Total	16.505	100%	49

Precipitation Source: WRCC Station Hugo 1 NW
Evaporation Source: NOAA Tech Atlas 33 Gross Evaporation Map No. 3 – Annual Free Water Surface Evaporation and the State Engineer’s Office recommended distribution of evaporation for elevations below 6,500 feet

25-Year 24-Hour Precipitation Event		
25-Year 24-Hour Precipitation Event	3.39	inches
Source: NOAA Atlas 14 Point Precipitation Frequency Estimates - Simla Station		

2. Evaporation Pond Design

Total Bottom Surface Area	310,000	ft ²	7.12	acres
Total Top of Berm Surface Area (Precip Area)	372,049	ft ²	8.54	acres
Total Required Land Area	448,154	ft ²	10.29	acres

Pond Bottom Surface Area per Pond	103,333	ft ²	2.37	acres
Pond Top Surface Area per Pond	124,016	ft ²	2.85	acres

Sludge depth	0.5	ft
Max Operating WL	3	ft
Freeboard	2	ft
Side Slope Ratio	3	
Pond Width to Length Ratio	2	
No. of Ponds	3	
Radius of Corner at Bottom	20	ft
Radius of Corner at Top	35	ft
SA Sub for Corner at Bottom	343	sf
SA Sub for Corner at Top	1052	sf
Width of Pond At Bottom	228	ft
Length of Pond at Bottom	455	ft
Width of Pond At Top	258	ft
Length of Pond at Top	485	ft
Width of Road	20	ft

3. Water Balance - Design Operating Conditions

Month	Days/Month	WW Inflow (gal/day)	WW Inflow (gal)	WW Inflow (ft3)	Avg. Precip (in)	Avg. Evap (in)	Avg. Precip (ft3)	Avg. Evap (ft3)	OUTFLOW Evaporation (ft3)	INFLOW WW + Precip (ft3)	Net Inflow (ft3)
January	31	15,000	465,000	62,161	0.34	1.41	10,541	40,070	40,070	72,703	32,632
February	28	15,000	420,000	56,146	0.36	1.65	11,161	46,749	46,749	67,307	20,559
March	31	15,000	465,000	62,161	0.97	2.59	30,074	73,462	73,462	92,235	18,773
April	30	15,000	450,000	60,156	1.675	4.23	51,932	120,211	120,211	112,088	-8,123
May	31	15,000	465,000	62,161	2.37	5.64	73,480	160,282	160,282	135,641	-24,640
June	30	15,000	450,000	60,156	2.085	6.82	64,644	193,674	193,674	124,800	-68,874
July	31	15,000	465,000	62,161	2.775	7.05	86,036	200,352	200,352	148,198	-52,154
August	31	15,000	465,000	62,161	2.805	6.35	86,966	180,317	180,317	149,128	-31,189
September	30	15,000	450,000	60,156	1.29	4.70	39,995	133,568	133,568	100,152	-33,416
October	31	15,000	465,000	62,161	0.88	3.29	27,284	93,498	93,498	89,445	-4,052
November	30	15,000	450,000	60,156	0.57	1.88	17,672	53,427	53,427	77,829	24,401
December	31	15,000	465,000	62,161	0.385	1.41	11,937	40,070	40,070	74,098	34,028
Total	365	180,000	5,475,000	731,901	16.505	47.00	511,723	1,335,680	1,335,680	1,243,624	-92,056
					30.50 Deficit						

- Notes:
1. Calculations assume no seepage
2. Precipitation volume calculating using top of berm surface area
3. Evaporation volume calculated using average of top and bottom pond surface areas

Month	Year 1	Year 2	Year 3	Year 4	Year 5	Max Pond Stage (ft)	Yr 5 Pond Stage (ft)
July	0	0	0	0	0	0.00	0.00
August	0	0	0	0	0	0.00	0.00
September	0	0	0	0	0	0.00	0.00
October	0	0	0	0	0	0.00	0.00
November	24,401	24,401	24,401	24,401	24,401	0.08	0.08
December	58,429	58,429	58,429	58,429	58,429	0.19	0.19
January	91,062	91,062	91,062	91,062	91,062	0.29	0.29
February	111,620	111,620	111,620	111,620	111,620	0.36	0.36
March	130,393	130,393	130,393	130,393	130,393	0.42	0.42
April	122,270	122,270	122,270	122,270	122,270	0.39	0.39
May	97,630	97,630	97,630	97,630	97,630	0.31	0.31
June	28,756	28,756	28,756	28,756	28,756	0.09	0.09

- Notes:
1. Values listed = volume in pond at corresponding year and month in ft³
2. Values calculated by adding Net Inflow for corresponding month to previous month. If net volume < 0, 0 is listed
3. Max Pond Stage = max volume in pond during corresponding month over five years divided by total pond bottom surface area
4. Yr 5 Pond Stage = volume in pond at year 5 during corresponding month divided by total pond bottom surface area

4. Water Balance - 25-Year 24-Hour Precipitation Event Conditions

Month	Year 1	Year 2	Year 3	Year 4	Year 5	Year 6	Year 7	Year 8	Year 9	Year 10	Max Pond Stage (ft)
July	0	0	81,706	0	0	0	0	0	0	0	0.26
August	0	0	50,517	0	0	0	0	0	0	0	0.16
September	0	0	17,101	0	0	0	0	0	0	0	0.06
October	0	0	13,048	0	0	0	0	0	0	0	0.04
November	24,401	24,401	37,450	24,401	24,401	24,401	24,401	24,401	24,401	24,401	0.12
December	58,429	58,429	71,477	58,429	58,429	58,429	58,429	58,429	58,429	58,429	0.23
January	91,062	91,062	104,110	91,062	91,062	91,062	91,062	91,062	91,062	91,062	0.34
February	111,620	111,620	124,668	111,620	111,620	111,620	111,620	111,620	111,620	111,620	0.40
March	130,393	235,497	143,441	130,393	130,393	130,393	130,393	130,393	130,393	130,393	0.76
April	122,270	227,374	135,318	122,270	122,270	122,270	122,270	122,270	122,270	122,270	0.73
May	97,630	202,734	110,678	97,630	97,630	97,630	97,630	97,630	97,630	97,630	0.65
June	28,756	133,860	41,804	28,756	28,756	28,756	28,756	28,756	28,756	28,756	0.43
Month	Year 11	Year 12	Year 13	Year 14	Year 15	Year 16	Year 17	Year 18	Year 19	Year 20	Max Pond Stage (ft)
July	0	0	0	0	0	0	0	0	0	0	0.00
August	0	0	0	0	0	0	0	0	0	0	0.00
September	0	0	0	0	0	0	0	0	0	0	0.00
October	0	0	0	0	0	0	0	0	0	0	0.00
November	24,401	24,401	24,401	24,401	24,401	24,401	24,401	24,401	24,401	24,401	0.08
December	58,429	58,429	58,429	58,429	58,429	58,429	58,429	58,429	58,429	58,429	0.19
January	91,062	91,062	91,062	91,062	91,062	91,062	91,062	91,062	91,062	91,062	0.29
February	111,620	111,620	111,620	111,620	111,620	111,620	111,620	111,620	111,620	111,620	0.36
March	130,393	130,393	130,393	130,393	130,393	130,393	130,393	130,393	130,393	130,393	0.42
April	122,270	122,270	122,270	122,270	122,270	122,270	122,270	122,270	122,270	122,270	0.39
May	97,630	97,630	97,630	97,630	97,630	97,630	97,630	97,630	97,630	97,630	0.31
June	28,756	28,756	28,756	28,756	28,756	28,756	28,756	28,756	28,756	28,756	0.09

- Notes:
1. Values listed = volume in pond at corresponding year and month in ft³
2. Values calculated by adding Net Inflow for corresponding month to previous month. If net volume < 0, 0 is listed
3. Max Pond Stage = max volume in pond during corresponding month over five years divided by total pond bottom surface area
4. Yr 5 Pond Stage = volume in pond at year 5 during corresponding month divided by total pond bottom surface area
5. Yellow month and year indicates month that 25-year 24-hour precipitation event is added

Town of Ramah
 Process Design Report
 Appendix H – Evaporation Pond Calculations

Flow & Loading

The system has been designed for an influent flow rate of 15,000 gpd and 32 lbs of BOD/day.

Precipitation

Precipitation data was obtained from Western Regional Climate Center, Station Rush 1N and Eastonville 2NNW. The data set for Ramah was determined by calculating the average of the Rush and Eastonville stations. The data from Rush and Eastonville is presented in Table 1. The calculated data for Ramah is presented in Table 2.

Table 1 - WRCC Precipitation Data

Month	Precipitation (in)	Month	Precipitation (in)
January	0.44	January	0.24
February	0.47	February	0.25
March	1.29	March	0.65
April	2.09	April	1.26
May	2.56	May	2.18
June	2.3	June	1.87
July	3.18	July	2.37
August	3.07	August	2.54
September	1.47	September	1.11
October	1.12	October	0.64
November	0.79	November	0.35
December	0.52	December	0.25
Total	19.30	Total	13.71
Source: WRCC Station Eastonville 2 NNW		Source: WRCC Station Rush 1N	

Town of Ramah
 Process Design Report
 Appendix H – Evaporation Pond Calculations

Table 2 - Ramah Precipitation Data

Month	Precipitation (in)
January	0.34
February	0.36
March	0.97
April	1.68
May	2.37
June	2.09
July	2.78
August	2.81
September	1.29
October	0.88
November	0.57
December	0.39
Total	16.51

Source: Average of WRCC Station Rush 1N & Eastonville 2 NNW

Evaporation

Evaporation data was taken from NOAA Tech Atlas 33 Gross Evaporation map No.3 – Annual Free Water Surface Evaporation and the State Engineer’s Office recommended distribution of evaporation for elevations below 6,500 feet. Monthly evaporation rates are presented in Table 3. The relevant information from these sources is attached to this memo.

Table 3 - Monthly Evaporation Rates

Month	Evaporation Distribution	Evaporation Rate (in)
January	3%	1.41
February	4%	1.645
March	6%	2.585
April	9%	4.23
May	12%	5.64
June	15%	6.815
July	15%	7.05
August	14%	6.345
September	10%	4.7
October	7%	3.29
November	4%	1.88
December	3%	1.41
Total	100%	47

Source: NOAA Tech Atlas 33 Gross Evaporation Map No. 3 – Annual Free Water Surface Evaporation and the State Engineer’s Office recommended distribution of evaporation for elevations below 6,500 feet

Evaporation Calculations

The above information was utilized to perform an iterative process to determine the appropriate sizing for an evaporative system. The size of the ponds was increased until the ponds will completely evaporate once per year. The total land required will be approximately 10.3 acres. See the evaporative pond system calculation table attached at the end of this memo.

BOD Loading

Colorado Department of Public Health and Environment (CDPHE) Design Criteria for Domestic Wastewater Treatment Works requires that “the total BOD loading shall not exceed 0.5 pounds per 1,000 square feet of water surface per day based on the total water surface in the stabilization pond”. The total minimum operating water level of the ponds is 310,000 SF.

$$\left(32 \text{ lbs} \frac{\text{BOD}}{\text{day}}\right) \div \left(310,000 \frac{\text{SF}}{1,000}\right) = 0.10 \text{ lbs}/1,000 \text{ SF}$$

The total BOD loading is calculated to be 0.10 lbs BOD/1,000 SF at the proposed permitted influent organic loading. This meets CDPHE criteria. The BOD loading breakdown is displayed in table 4.

Table 4 - Evaporation Ponds BOD Loading

Condition	Loading	Units	Design Criteria
Permitted Organic Loading	32	lbs BOD/day	
Total Bottom of Pond Area (Three Ponds)	310,000	SF	
Total Bottom of Pond Area with One Pond Out of Service	206,667	SF	
BOD Loading with Three Ponds Online	0.103	lbs BOD/day/1,000 SF	0.5
BOD Loading with One Pond Out of Service	0.155	lbs BOD/day/1,000 SF	1

Channel Report

South Swale 100-Year

Triangular

Side Slopes (z:1) = 3.00, 3.00
Total Depth (ft) = 4.00

Invert Elev (ft) = 6125.00
Slope (%) = 0.90
N-Value = 0.030

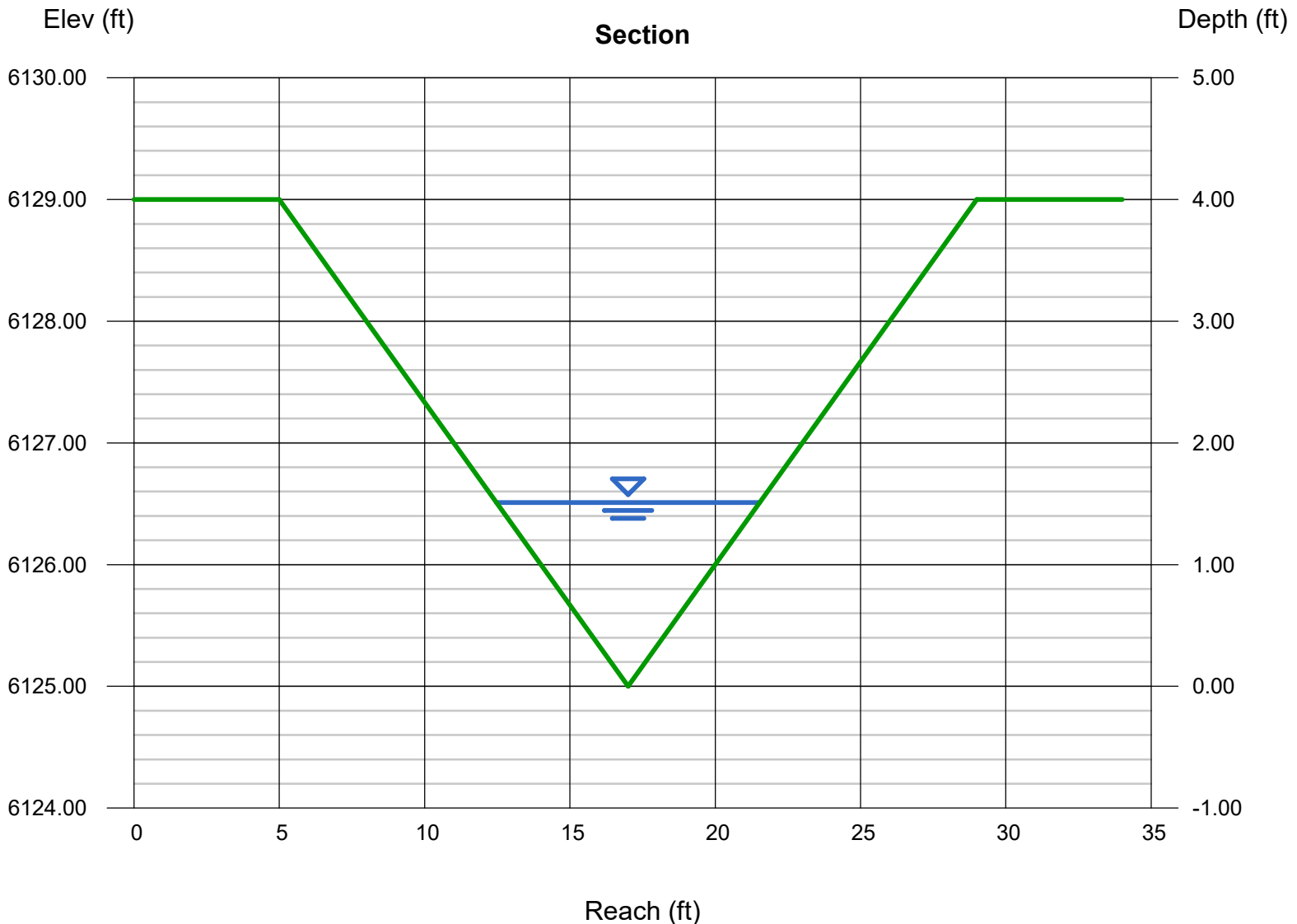
Calculations

Compute by: Known Q
Known Q (cfs) = 25.65

Highlighted

Depth (ft) = 1.51
Q (cfs) = 25.65
Area (sqft) = 6.84
Velocity (ft/s) = 3.75
Wetted Perim (ft) = 9.55
Crit Depth, Yc (ft) = 1.36
Top Width (ft) = 9.06
EGL (ft) = 1.73

Discuss if swale requires lining due to velocity per El Paso County DCM Volume 1 Section 3 Chapter 10.3



APPENDIX C: REFERENCES



Kumar & Associates, Inc.®
Geotechnical and Materials Engineers
and Environmental Scientists

6735 Kumar Heights
Colorado Springs, CO 80918
phone: (719) 632-7009
fax: (719) 632-1049
email: kacolospgs@kumarusa.com
www.kumarusa.com

An Employee Owned Company

Office Locations: Denver (HQ), Parker, Colorado Springs, Fort Collins, Glenwood Springs, and Summit County, Colorado

GEOTECHNICAL ENGINEERING STUDY
RAMAH WASTEWATER TREATMENT PLANT
IMPROVEMENT PROJECT
RAMAH, COLORADO

Prepared By:
Arben F. Kalaveshi, P.E.

Reviewed By:



Duane P. Craft, P.E.



Prepared for:

Nicholaus Marcotte, P.E.
Element Engineering, LLC
12687 West Cedar Drive, Suite 300
Lakewood, Colorado 80228

TABLE OF CONTENTS

SUMMARY	1
PURPOSE AND SCOPE OF STUDY.....	2
PROPOSED CONSTRUCTION	2
SITE CONDITIONS	2
SUBSURFACE CONDITIONS	3
ENGINEERING CONSIDERATIONS	4
FOUNDATIONS.....	5
RETAINING STRUCTURES	8
WATER SOLUBLE SULFATES	9
SEISMIC DESIGN CRITERIA	9
SURFACE DRAINAGE	9
SITE GRADING AND EARTHWORK.....	10
PAVEMENT DESIGN.....	11
EXCAVATION CONSIDERATIONS	13
DESIGN AND SUPPORT SERVICES.....	14
LIMITATIONS	14

FIGS. 1, 1A – LOCATIONS OF EXPLORATORY BORINGS

FIG. 2 – LOGS OF EXPLORATORY BORINGS

FIG. 3 – LEGEND AND NOTES

FIGS 4, 5, 6 – SWELL-CONSOLIDATION TEST RESULTS

FIGS. 7, 8 – GRADATION TEST RESULTS

TABLE I - SUMMARY OF LABORATORY TEST RESULTS

SUMMARY

1. This study was conducted in two areas. Borings 1 and 2, drilled southeast of The Town of Ramah encountered a layer of topsoil overlying sands and clays extending to the maximum drilled depth of 20 feet. Boring 3, drilled on the northwest end of town encountered topsoil overlying man placed fill extending to a depth of about 6 feet. Sands were found below the fill, and extended to the maximum drilled depth of 30 feet, but included a layer of sandy lean clay from about 27 to 29 feet.
2. Groundwater was encountered in Boring 3 both during drilling and when measured again six days later. The water depth at the time of our final reading was 15.3 feet below the ground surface. Although no groundwater was measured in the other two borings, perched surface water may occur within the sands above less permeable clays, particularly after precipitation events.
3. Borings 1 and 2 were drilled for new evaporative ponds to replace the existing system. The subsurface soil profile at this location included a clay zone from about 2½ feet to 9½ feet below the existing ground surface. The clays tested had a moderate to high swell potential upon wetting and are anticipated to have a relatively low permeability. While these soils will probably work well for use as evaporative ponds, the construction of shallow foundations here will be difficult due to the swell potential. If movement sensitive structures are constructed in this area, we recommend that they be constructed on deep foundations such as helical piers that extend to the underlying granular soils found below the clays.
4. Boring 3 was drilled for the construction of a new lift station. Because undocumented fill was encountered in this area, we recommend that it be removed and replaced with suitable materials where it is present below proposed shallow foundations. Alternatively, deep foundations may be considered. Based on the subsurface profile encountered at this location, foundations will need to extend to a depth of about 6 feet or greater to bear on native soils, but the depth and lateral extent of the existing fill was not determined beyond the boring location. Fill may extend to greater depths in the area of the proposed foundations.
5. We anticipate that gravel access drives may be constructed at each of the proposed sites. Based on their intended use, we have assumed an EDLA of 10 for these areas. Based on the subsurface conditions encountered and the relatively light estimated traffic volumes, we recommend the pavement section alternatives presented in the following table.

Pavement Section Thickness (in.)	
Area	Aggregate Base Course
Access Drives	8

PURPOSE AND SCOPE OF STUDY

This report presents the results of a geotechnical engineering study for the construction of various improvements to the existing wastewater treatment system in Ramah, Colorado. The project site is shown on Fig. 1. The study was conducted in accordance with our Proposal No. C22-104, dated January 10, 2022, to provide recommendations for foundations and gravel pavement section thickness.

This report has been prepared to summarize the data obtained during this study, and to present our conclusions and recommendations based on the proposed construction and the subsurface conditions encountered. Design parameters and a discussion of geotechnical engineering considerations related to the proposed construction are included in the report.

PROPOSED CONSTRUCTION

We understand the project will include a new lift station for a force main that will connect to a new evaporative pond system located about half a mile away. The new ponds will include three adjacent cells, and will replace the existing one located on the north end of town, which will be decommissioned. The lift station is anticipated to have a depth of about 12 feet, and the ponds will have sloped basins ranging in depth from about 2 to 8 feet. The approximate pond site layout is shown on the attached Fig. 1A.

We anticipate that bearing loads will be light for the proposed structures. Permanent grading will mostly consist of cuts, with depths up to about 8 feet for the proposed ponds. If the proposed construction is significantly different from that described above or depicted in this report, we should be notified to reevaluate the recommendations contained in this report.

SITE CONDITIONS

The proposed evaporation pond site is located southeast of the Town of Ramah Cemetery, and is bordered by Ramah Road on the south and west sides, and open fields on the north and east. The area is relatively flat, with some small hills and draws, with a gentle slope down to the northeast. An ephemeral tributary to Big Sandy Creek is located about 1,000 feet east of the site, and was dry at the time of our study. This area appeared to be actively used as an agricultural field, and the vegetation had been tilled.

The site of the proposed lift station is located on the northwest part of town, just west of the intersection of Rock Island Avenue and Pikes Peak Avenue. The site is bordered to the north and east by Pikes Peak avenue, and to the south and west by private property. Houses and other small structures are located near the site. This area is relatively flat with a light downward slope to the north. Big Sandy Creek is located about 500 feet to the northwest, and the existing evaporation pond (lagoon) is located about 1,000 feet to the northeast. Vegetation in this area consisted of a grass lawn and several trees.

SUBSURFACE CONDITIONS

Information on subsurface conditions was obtained by conducting a site reconnaissance and drilling three exploratory borings at the approximate locations shown on Fig. 1. The boring logs and corresponding legend and notes are shown on Figs. 2 and 3. The results of swell-consolidation tests and gradation tests conducted on selected soils are presented on Figs. 4 through 6, and Figs. 7 and 8, respectively. A summary of the test results is presented on Table I. The laboratory testing was conducted in general accordance with applicable ASTM standards.

Borings 1 and 2 were drilled at the site of the proposed evaporation ponds. Below a layer of topsoil the subsurface soil profile at this location consisted of clayey sands extending to a depth of about 2½ feet underlain by a layer of lean clay with varied amounts of sand, followed by discontinuous layers of clayey sand and well graded sand with silt extending to the maximum depth explored of 20 feet. Based on vertical expansion ranging from about 3.4 to 5.7 percent upon wetting under a surcharge pressure of 1,000 psf, the clays in this area possess a moderate to high swell potential.

Boring 3 was drilled at the site of the proposed lift station. Below a layer of vegetated topsoil, the subsurface soil profile at this location consisted of man placed fill extending to a depth of about 6 feet, and underlain by clayey sand extending to a depth of 9½ feet. Well graded sand was found below the clayey sand, and extended to a depth of about 27 feet, where it was underlain by a layer of sandy lean clay. The clay layer was relatively thin, and was underlain by clayey sand from 29 feet to the maximum explored depth of 30 feet. The fill tested did not appear to possess a significant swell potential based on a vertical expansion of 0.2 percent upon wetting under a surcharge pressure of 1,000 psf.

Detailed descriptions of the soils and the depths at which they were encountered can be found on Figs. 2 and 3.

ENGINEERING CONSIDERATIONS

Existing fill was encountered to a depth of about 6 feet at the location of the proposed lift station. The lateral or vertical extents of the fill were not determined in the scope of this study, but we understand that the base of this structure will be about 12 feet below the ground surface, and if this is the case for all foundations, the existing fill is not likely to be a factor for the design of shallow foundations. If portions of the structure or ancillary structures will be constructed at shallower depths, fill may be present below the base of shallow foundations. In all cases, fill should be removed and replaced with suitable material where it is present below foundations. Alternatively, foundations extending to native soils or deep foundations may be considered. Recommendations for both footing/pad foundations and deep helical foundations have been presented in this report.

Groundwater was measured at a depth of about 15.3 feet in the boring drilled for the proposed lift station measured six days after drilling. This depth is near the elevation of the base of the lift station, and groundwater may be a construction consideration at this site. A detailed discussion is presented in the "Site Grading and Earthwork" Section.

The subsurface soil profile at the location of the proposed evaporation ponds included a clay zone from about 2½ feet to 9½ feet below the existing ground surface. The clays tested had a moderate to high swell potential upon wetting and are anticipated to have a relatively low permeability. While these soils will probably work well for use as evaporative ponds, the construction of shallow foundations here will be difficult due to the swell potential. If structures that are sensitive to heave related movement are constructed in this area, we recommend that they be constructed on deep foundations such as helical piers that extend to the underlying granular soils found below the clays.

The clay soils encountered in our study will have relatively low permeability, but are natural materials and will vary throughout the site area. An engineered liner system should be implemented at the basin of each pond if specific permeability limits are required for this project.

FOUNDATIONS

Shallow Foundations: The design and construction criteria presented below should be observed for a shallow footing system. The construction details should be considered when preparing project documents.

1. The maximum net allowable bearing pressure for footings placed on native granular soils or suitable fill will be a function of the embedment depth of the foundation considered. Allowable pressures for the anticipated foundation depths have been presented in the following table. These values may be increased by a factor of 1/3 for transient loading.

Foundation Bury Depth (feet)	Allowable Bearing Pressure (psf)
3	2,500
12	4,500

Mat foundations that are not considered rigid may use a design modulus of vertical subgrade reaction of 150 pci. This value is for a 1 ft. x 1 ft. square plate and should be corrected for the shape and size of the actual mat.

2. We estimate total settlement for shallow foundations designed and constructed as discussed in this section will not exceed approximately 1 inch.
3. Continuous footings should have a minimum width of 16 inches, and isolated pads should have a minimum width of 24 inches.
4. Exterior footings and footings beneath unheated areas should be provided with adequate soil cover above their bearing elevation for frost protection. Based on our experience with similar projects, we recommend the foundations be placed at least 36 inches below the existing grade.
5. The lateral resistance of a foundation placed on properly compacted fill material or bedrock will be a combination of the sliding resistance of the footing on the foundation materials and passive earth pressure against the side of the footing. Resistance to sliding at the bottoms of the footings may be calculated based on an allowable coefficient of friction of 0.35. Passive pressure against the sides of the footings may be calculated

using an allowable equivalent fluid unit weight of 190 pcf. These values are working values. The specifications for compaction of fill against the sides of foundations to resist lateral loads are presented under the "Site Grading and Earthwork" section of this report.

6. Earthwork recommendations for shallow foundations are presented in the "Site Grading and Earthwork" section of this report.
7. Existing fill, or areas of loose material encountered within the foundation excavation should be removed and the footings extended to adequate natural bearing material.
8. A representative of the geotechnical engineer should observe all footing excavations prior to fill and concrete placement.

Helical Pier Foundations: The axial design load of helical piers should be determined in general accordance with the current International Building Code (IBC), which states the allowable axial design load, P_a , should be determined as follows:

$P_a = 0.5 P_u$, where P_u (the ultimate load) is the least value of:

1. Sum of the areas of the helical bearing plates times the ultimate bearing capacity of the soil or rock comprising the bearing stratum.
2. Ultimate capacity determined from well-documented correlations with installation torque.
3. Ultimate capacity determined from load tests.
4. Ultimate capacity of pile shaft.
5. Ultimate capacity of pile couplings.
6. Sum of the Ultimate axial capacity of helical bearing plates affixed to pile.

Items 1 through 3 are related to the geotechnical capacity of the piers; Items 4 through 6 are related to the structural capacity and should be evaluated by the structural engineer. The owner and structural designer should be aware that certain proprietary helical pier systems have been subjected to acceptance testing administered by the International Code Council (ICC), while other systems provided by specialty contractors may be fabricated according to designs by registered professional engineers. The certified systems have documentation that addresses

many of the structural capacity issues, while the non-certified systems require structural design by an engineer. Many of the lighter-duty helical pile systems available, with working capacities on the order of 50 kips or less, are certified, which can simplify the design and submittal process. However, higher capacity systems, where single piers may have working capacities of 200 kips or more, sometimes referred to as screw piles, are often designed and fabricated and are not certified, manufactured systems.

Based on consideration of bearing capacity theory and published correlations of boring penetration resistance values with ultimate bearing capacity, we recommend an ultimate bearing capacity of 10 ksf for a helical pile embedded in the native sands. We anticipate it will be possible to achieve adequate capacities at nominal depths of about 15 feet by using the appropriate size and number of bearing plates. Nominal depths should be measured from the topmost bearing plate. A greater bearing capacity will be achievable if the piers extend to the underlying claystone bedrock.

Helical piers are typically very slender foundation elements with a low capacity for resisting lateral loads. Lateral restraint of a helical pile foundation system is normally provided through the use of passive pressure on pile caps or foundation walls, or through the use of battered piers. It is normally assumed that a battered pile can be designed for the same axial load as a vertical pile, with the lateral restraint being provided by the horizontal component of the battered pile. Helical piers are often assumed to have tension capacities similar to the axial compressive capacity, although that should be evaluated through load testing or otherwise addressed by the specialty contractor's submittal.

Acceptance of helical pile installation should be based on attaining a specified torque in the recommended bearing stratum determined in accordance with correlations of installation torque to capacity based on calibrated torque measurements and axial load test data. In our opinion, the ultimate bearing capacity recommended above may be exceeded if supported by adequate site-specific load test data. If site-specific load tests are not performed, the specialty helical pile contractor's submittal should contain torque-to-capacity data for their pile system in similar soil conditions. If that information cannot be provided, site-specific load tests should be performed in accordance with ASTM D 1143.

We recommend that a qualified helical pile specialty contractor be retained to provide the required design submittal and to provide and install the helical piers. The project design should include a performance specification indicating required capacities, structural requirements, and submittal requirements. At a minimum, the submittal should be required to contain information supporting capacity determination, a description of equipment and installation procedures that will ensure penetration to the required depths, and acknowledgement that the helical bearing plates will be installed into the recommended bearing stratum, as well as all necessary information to satisfy the requirements of the project structural designer.

We should be retained to review the contractor's submittal, and to provide installation observation including monitoring depths and general conformance with the plans and specifications. Our observation and testing services will be intended to document that all of the helix bearing plates on the piers are installed into an adequate bearing stratum.

RETAINING STRUCTURES

Structures such as retaining or foundation walls should be designed for the lateral pressure generated by the backfill, which is a function of the degree of rigidity of the retaining structure and the type of backfill material used. Cantilevered retaining structures that can deflect sufficiently to mobilize the active earth pressure condition maybe designed using the active equivalent fluid pressure (EFP) presented in the following table. Retaining structures that are not expected to deflect should be designed using the at-rest EFP presented in the same table.

Condition	Soil Type	Equivalent Fluid Pressure (pcf)	
		Active	At-rest
Unsubmerged	Suitable On-Site Soil	50	70
Unsubmerged	CDOT Class 1 Structure Backfill	40	60
Submerged	Suitable On-Site Soil	88	99
Submerged	CDOT Class 1 Structure Backfill	83	94

All foundation and retaining structures should be designed for appropriate hydrostatic and surcharge pressures such as adjacent footings, traffic, construction materials and equipment. The unsubmerged pressures recommended above assume drained conditions behind the walls and a horizontal backfill surface. The buildup of water behind a wall or an upward sloping backfill surface will increase the lateral pressure imposed on a foundation wall or retaining structure. Retaining structures may be designed using the values presented for unsubmerged

soils if adequate drainage is provided to prevent the buildup of hydrostatic pressure. This can be accomplished using an underdrain or weep holes. If such measures are not implemented, the structures should be designed using the submerged values presented.

WATER SOLUBLE SULFATES

The concentrations of water soluble sulfates measured in samples of the native clay and fill obtained from the exploratory borings ranged from 0.01 to 0.06 percent. These concentrations of water soluble sulfates represent a Class 0 severity of exposure to sulfate attack on concrete exposed to these materials. The degree of attack is based on a range of Class 0 to Class 3 severity of exposure as presented in ACI 201. Based on the laboratory data and our experience, special sulfate resistant cement will not be required for concrete exposed to the on-site soils.

SEISMIC DESIGN CRITERIA

Using estimated shear wave velocities for the subgrade materials encountered based on standard penetration testing, calculations indicate a design Site Class D per the International Building Code (IBC). Based on the subsurface profile and the anticipated ground conditions, liquefaction is not a design consideration.

SURFACE DRAINAGE

Providing proper surface drainage, both during construction and after the construction has been completed, is very important for acceptable performance of the development. The following recommendations should be used as guidelines and changes should be made only after consultation with the geotechnical engineer.

1. Excessive wetting or drying of the foundation and structure subgrades should be avoided during construction.
2. Care should be taken when compacting around the foundation walls to avoid damage to the structure.
3. The ground surface surrounding the exterior of the building should be sloped to drain away from the foundation in all directions. We recommend a minimum slope of 6 inches in the first 10 feet in unpaved areas. Site drainage beyond the 10-foot zone should be

designed to promote runoff and reduce water infiltration. A minimum slope of 3 inches in the first 10 feet is recommended in the paved areas. These slopes may be changed as required for handicap access points in accordance with the Americans with Disabilities Act.

4. Ponding of water should not be allowed on backfill material or within 10 feet of the foundation walls, whichever is greater.
5. Roof downspouts and drains should discharge well beyond the limits of all backfill.

SITE GRADING AND EARTHWORK

We recommend the following criteria be used when preparing the site grading plans.

Fill Material Specifications: The following material specifications are presented for fills on the project site.

1. *Fill Beneath and Beside Foundations:* The on-site granular soils with the exception of any deleterious materials and rock larger than 4 inches in diameter will be suitable for reuse as structural fill. Import fill, if required, should consist of a minus 2-inch non-expansive soil having a maximum 35% passing the No. 200 sieve and a maximum plasticity index of 15. New fill should extend down from the edges of the foundations at a minimum 1:1 horizontal to vertical projection.
2. *Gravel Pavement Subgrade Areas:* Same as #1 above.
3. *Pipe Bedding Material:* Pipe bedding material should be a free draining, coarse-grained sand and/or fine gravel having a maximum size of 1 inch. We do not anticipate that the near surface on-site natural soils will be suitable for bedding due to the presence of larger particles.
4. *Utility Trench Backfill:* Materials excavated from the utility trenches may be used for trench backfill above the pipe zone fill provided they do not contain unsuitable material or particles larger than 4 inches.

5. *Material Suitability:* All fill material should be free of vegetation, brush, sod and other deleterious substances. The geotechnical engineer should evaluate the suitability of all proposed fill materials prior to placement.

Subgrade Preparation: The ground surface shall be stripped of vegetation/organics prior to foundation or fill placement. Loose, unstable or otherwise unsuitable soils shall be removed, where present, in order to provide a stable platform prior to placement of fill. The existing soils should be scarified, moisture conditioned, and recompacted to a depth of 12 inches prior to the placement of new fill or structures

Compaction Requirements: A representative of the geotechnical engineer should observe fill placement operations on a full-time basis. We recommend the following minimum compaction criteria be used on the project.

Area	Percentage of Proctor Maximum Dry Density	
	Standard Proctor (ASTM D698)	Modified Proctor (ASTM D1557)
Fill beneath foundations	98%	--
Foundation wall backfill	95%	--
Slab Subgrade	95%	--
Beneath pavement Areas/ Flatwork/Utility Trenches	95%	--
Aggregate Pavements	--	95%
Landscape and Other Misc. Overlot Fill Areas	95%	--

For compaction of suitable granular soils, a moisture content within 2 percent of optimum should be maintained. For the compaction of cohesive soils, a moisture content within 0 to 4 percent above optimum should be maintained. A moisture content sufficient to achieve adequate compaction may be used for materials with few fines, such as the aggregate base course used for aggregate pavements.

PAVEMENT DESIGN

A pavement section is a layered system designed to distribute concentrated traffic loads to the subgrade. Performance of the pavement structure is directly related to the physical properties of the subgrade soils, pavement section, and traffic loadings. We anticipate that gravel surfaced pavements will be used for access drives at both these sites.

Subgrade Materials: Based on the American Association of State Highway Transportation Officials (AASHTO) classification system the soils tested near the proposed subgrade elevation consisted of A-6 soils with a group index of 8. These soils are rated as poor for use as subgrade material.

Design Traffic: We have assumed that after construction, the roads will only receive occasional truck traffic. For our pavement thickness design calculations, we assumed an equivalent 18-kip daily load application (EDLA) of 10 . If it is determined that actual traffic is significantly different from that estimated, we should be contacted to reevaluate the pavement thickness design.

Pavement Sections: The pavement section presented in the following table is recommended for gravel drives constructed for this project.

Pavement Section Thickness (in.)	
Area	Aggregate Base Course
Access Drives	8

Subgrade Preparation: For general subgrade preparation, we recommend the pavement subgrade be thoroughly scarified and well-mixed to a minimum depth of 12 inches, moisture conditioned, and compacted to the specifications presented in the “Site Grading and Earthwork” Section.

Proof Roll: Before paving, the subgrade should be proof rolled with a heavily loaded, pneumatic-tired vehicle. The vehicle should have a gross weight of at least 50,000 pounds, with a single loaded axle weight of 18,000 pounds, and a tire pressure of 100 psi. Areas that deform excessively under heavy wheel loads are not stable and should be removed and replaced with suitable material to achieve a stable subgrade prior to paving.

Subgrade Stabilization: Although not anticipated, areas of unstable subgrade soils may be encountered during subgrade preparation for construction of the new pavement. Unstable foundation soils may be stabilized by overexcavation and replacement of the subgrade with suitable, imported, angular, well-graded materials. Other alternatives include the use of Type 2 biaxial geogrid reinforcement in combination with a layer of Class 6 aggregate base course. It

has been our experience that the use of a crushed concrete product meeting a Class 6 gradation can perform well when trying to achieve stabilization. Specific stabilization requirements should be evaluated at the time of construction.

Drainage: The collection and diversion of surface drainage away from paved areas is extremely important to the satisfactory performance of the pavement. Drainage design should provide for the removal of water from paved areas and reduce wetting of the subgrade soils.

Maintenance: Periodic maintenance will be required in paved areas, consisting of grading to remove ruts and potholes created by the environment and traffic, and to replace material that has been washed away or contaminated. During the lifetime of the pavement, the aggregate surfacing may need to be scarified, with additional aggregate added to restore the thickness to the design depth. The subgrade soils should be prepared according to the "Site Grading" section of this report.

Pavement Materials: Aggregate Base Course should conform to the requirements of AASHTO M147 and to Section 703.03 of the Colorado Department of Transportation (CDOT) Standard Specifications for Road and Bridge Construction and should meet Class 5 or 6 grading and quality as defined by the CDOT specifications. Crushed concrete meeting these requirements may also be used, and may be more resistant to rutting.

EXCAVATION CONSIDERATIONS

In our opinion, the overburden soils encountered in the exploratory borings drilled for this study can be excavated with conventional construction equipment. In accordance with OSHA criteria, the on-site clays will classify as a Type B material, and the sands will classify as an OSHA Type C material. Per OSHA criteria, unless excavations are shored, temporary unretained excavations should have slopes no steeper than the following for each soil type encountered.

Type A.....3/4:1 (H:V)
Type B.....1:1 (H:V)
Type C.....1½:1 (H:V)

A properly braced excavation or the use of a trench box should be used where the indicated unretained slopes cannot be accommodated. Flatter slopes will be required where groundwater seepage is encountered. OSHA regulations require that excavations greater than 20 feet in

depth be designed by a professional engineer. If subsurface conditions vary from those indicated in this report are encountered, the OSHA soil type may vary, and the required cut slopes may need to be adjusted. The contractor's "competent person" should make all decisions regarding excavation slopes.

As noted in this report, groundwater was encountered at a depth of about 15.3 feet during the subsurface investigation, and shallow perched water may also be present within the site soils. If groundwater is present above the depth of excavation, flatter slopes will be required. It is assumed site dewatering would occur in advance of the excavation and be maintained the entire duration that the excavation is open. Surface drainage should be diverted away from all temporary cut slopes in order to reduce the potential for slope erosion and instability. OSHA regulations require that excavations greater than 20 feet in depth and excavations that extend below the ground water level be designed by a professional engineer.

DESIGN AND SUPPORT SERVICES

Kumar & Associates, Inc. should be retained to review the project plans and specifications for conformance with the recommendations provided in this report. We are also available to assist the design team in preparing specifications for geotechnical aspects of the project and, if necessary, perform additional studies to accommodate any changes in the proposed construction.

We recommend that Kumar & Associates, Inc. be retained to provide construction observation and testing services to document that the intent of this report and the requirements of the plans and specifications are being followed during construction. This will allow us to identify possible variations in subsurface conditions from those encountered during this study and to allow us to re-evaluate our recommendations, if needed. We will not be responsible for implementation of the recommendations presented in this report by others, if we are not retained to provide construction observation and testing services.

LIMITATIONS

This study has been conducted for exclusive use by the client for geotechnical related design and construction criteria for the project. The conclusions and recommendations submitted in this report are based upon the data obtained from the exploratory borings at the locations indicated on Fig. 1 or as described in the report, and the proposed type of construction. This report may not reflect subsurface variations that occur between the exploratory borings, and the

nature and extent of variations across the site may not become evident until site grading and excavations are performed. If during construction, fill, soil, rock or water conditions appear to be different from those described herein, Kumar & Associates, Inc. should be advised at once so that a re-evaluation of the recommendations presented in this report can be made. Kumar & Associates, Inc. is not responsible for liability associated with interpretation of subsurface data by others.

Swelling soils occur on this site. Such soils are stable at a fixed moisture content but will undergo high volume changes with changes in moisture content. The extent and amount of perched water beneath the building site as a result of area irrigation and inadequate surface drainage is difficult, if not impossible, to foresee.

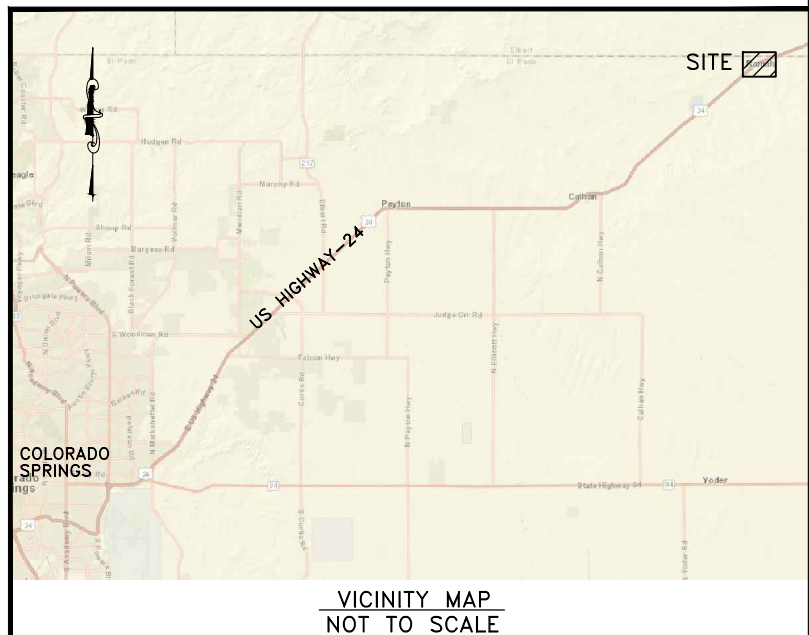
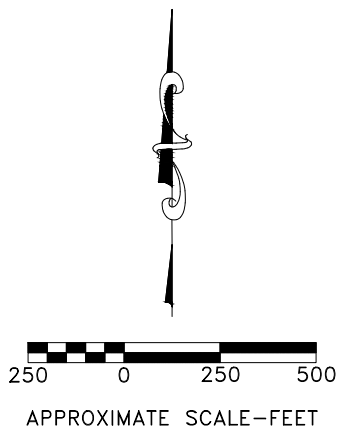
The recommendations presented in this report are based on current theories and experience of our engineers on the behavior of swelling soil in this area. Standards of practice in this area evolve over time. The owner should be aware that there is a risk in constructing a building in an expansive soil area. Following the recommendations given by a geotechnical engineer, careful construction practice and prudent maintenance by the owner can, however, decrease the risk of foundation movement due to expansive soils.

The scope of services for this project does not include any environmental assessment of the site or identification of contaminated or hazardous materials or conditions. If the owner is concerned about the potential for such contamination, other studies should be undertaken.

AFK:th

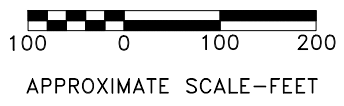
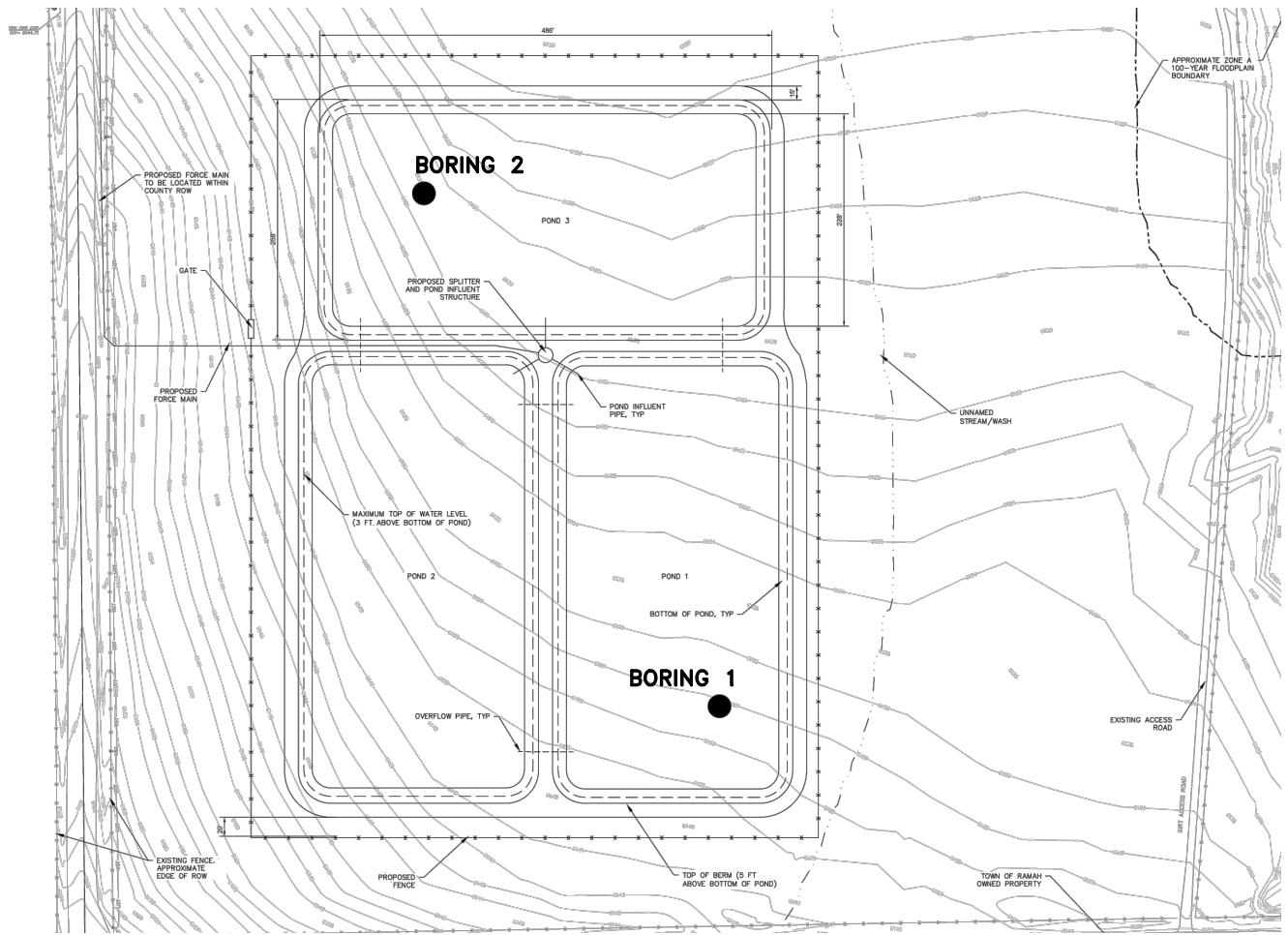


SEE FIG 1A →



VICINITY MAP
NOT TO SCALE

April 22, 2022 10:29am
 C:\Users\jromera\AppData\Local\Temp\AcPublish_2642A\222102-01.dwg

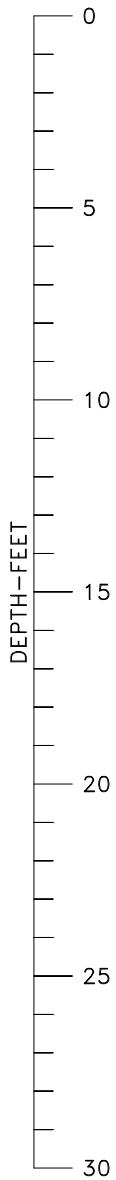


April 22, 2022 - 10:56am
 C:\Users\mromera\AppData\Local\Temp\AcPublish_2642A\22102-01.dwg

BORING 1

BORING 2

BORING 3



44/12
WC=8.9
DD=110.8
-200=60

23/12
WC=6.9
DD=114.5
+4=0
-200=37
LL=25
PI=9
A-4 (0)

28/12

9/12

23/12
WC=11.4
DD=108.0
-200=74
LL=48
PI=29
WSS=0.06
A-7-6 (21)

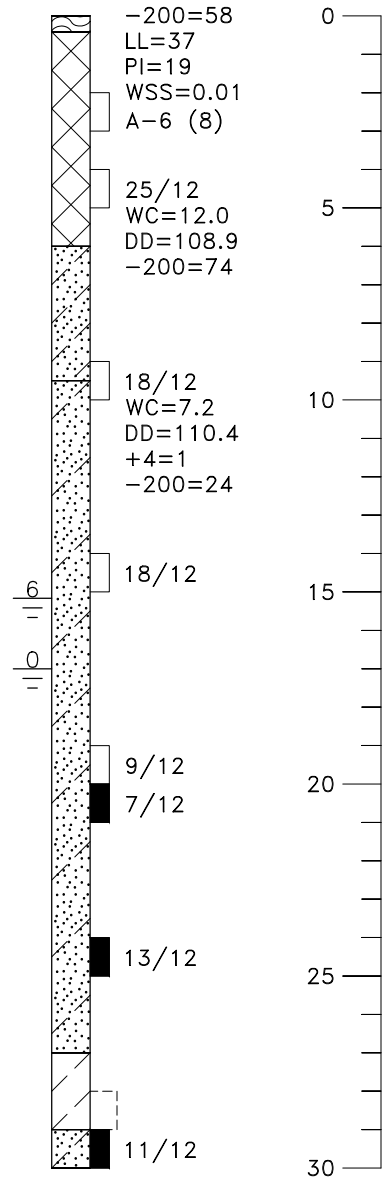
25/12

35/12
WC=13.9
DD=101.8
-200=82

41/12

41/12
WC=2.6
DD=115.4
+4=1
-200=12
NP
A-1-b (0)

21/12



30/12
WC=11.3
DD=83.5
-200=58
LL=37
PI=19
WSS=0.01
A-6 (8)

25/12
WC=12.0
DD=108.9
-200=74

18/12
WC=7.2
DD=110.4
+4=1
-200=24

18/12
6
0

9/12

7/12

13/12

11/12

April 22, 2022 - 10:50am
C:\Projects\2022\22-2-102_Ramoth Water Treatment Plant Improvements (CMT)\Drilling\222102-02_10_05.dwg

LEGEND



TOPSOIL.



FILL: SANDY LEAN CLAY AND LEAN CLAY WITH SAND (CL), FINE TO COARSE GRAINED SAND FRACTION, MOIST, MOTTLED BROWNS.



CLAYEY SAND (SC), FINE TO COARSE GRAINED, MEDIUM DENSE TO DENSE, SLIGHTLY MOIST TO VERY MOIST, LIGHT BROWN TO GRAY-BROWN.



SANDY LEAN CLAY TO LEAN CLAY WITH SAND (CL), FINE TO COARSE GRAINED SAND FRACTION, VERY STIFF TO HARD, SLIGHTLY MOIST TO MOIST, LIGHT TO DARK BROWN.



WELL GRADED SAND WITH SILT (SW-SM), FINE TO COARSE GRAINED, MEDIUM DENSE TO DENSE, MOIST, LIGHT BROWN.



WELL GRADED SAND WITH CLAY (SW-SC), FINE TO COARSE GRAINED, LOOSE TO MEDIUM DENSE, MOIST TO WET, LIGHT BROWN TO GRAY-BROWN.



DRIVE SAMPLE, 2-INCH I.D. CALIFORNIA LINER SAMPLE.



DRIVE SAMPLE, 1 3/8-INCH I.D. SPLIT SPOON STANDARD PENETRATION TEST.



DISTURBED BULK SAMPLE.

44/12 DRIVE SAMPLE BLOW COUNT. INDICATES THAT 44 BLOWS OF A 140-POUND HAMMER FALLING 30 INCHES WERE REQUIRED TO DRIVE THE SAMPLER 12 INCHES.

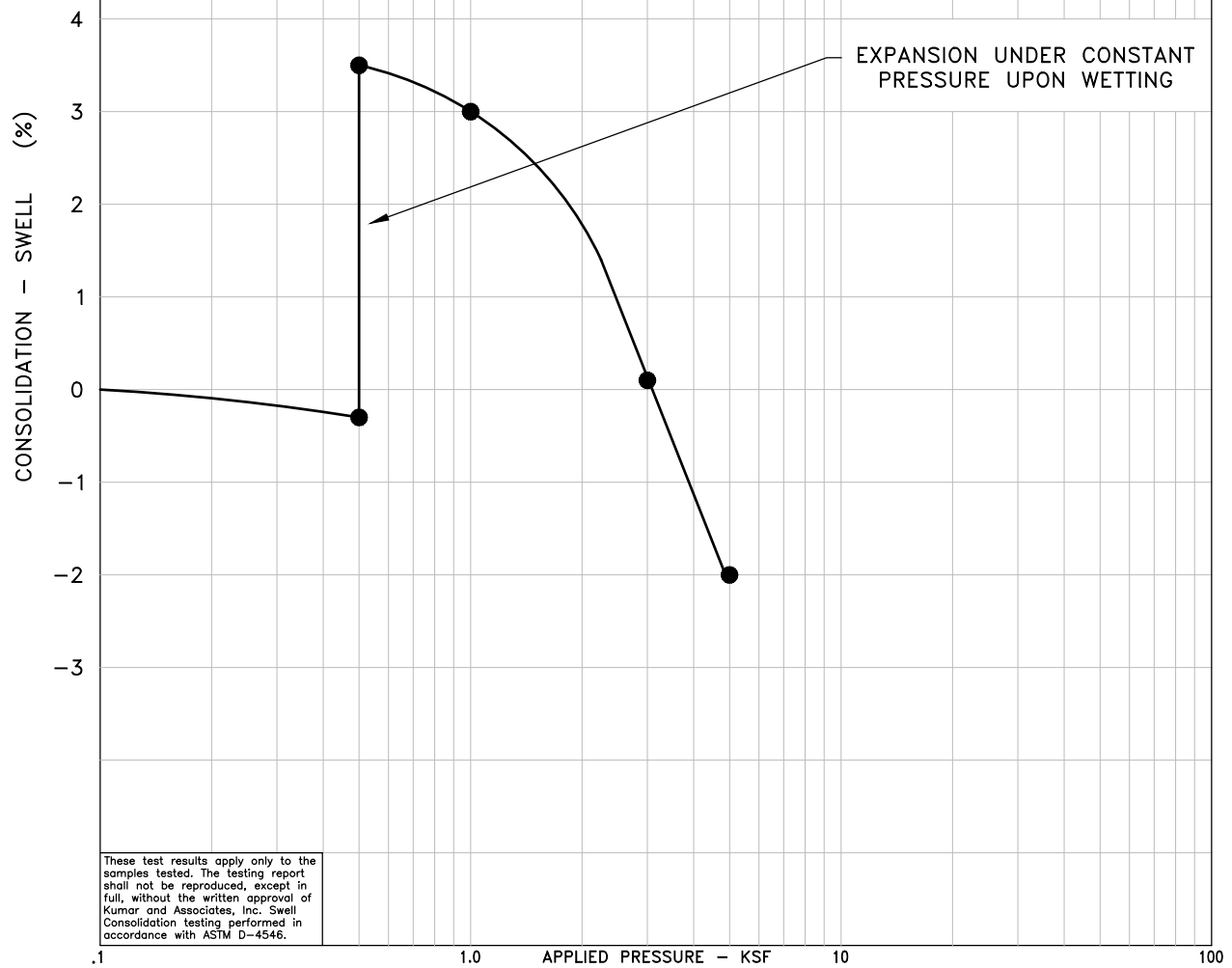
$\frac{6}{-}$ DEPTH TO WATER LEVEL AND NUMBER OF DAYS AFTER DRILLING MEASUREMENT WAS MADE.

NOTES

1. THE EXPLORATORY BORINGS WERE DRILLED ON MARCH 15, 2022 WITH A 4-INCH-DIAMETER CONTINUOUS-FLIGHT POWER AUGER.
2. THE LOCATIONS OF THE EXPLORATORY BORINGS WERE MEASURED APPROXIMATELY BY PACING FROM FEATURES SHOWN ON THE SITE PLAN PROVIDED AND SHOULD BE CONSIDERED ACCURATE ONLY TO THE DEGREE IMPLIED BY THE METHOD USED.
3. THE ELEVATIONS OF THE EXPLORATORY BORINGS WERE NOT MEASURED AND THE LOGS OF THE EXPLORATORY BORINGS ARE PLOTTED TO DEPTH.
4. THE LINES BETWEEN MATERIALS SHOWN ON THE EXPLORATORY BORING LOGS REPRESENT THE APPROXIMATE BOUNDARIES BETWEEN MATERIAL TYPES AND THE TRANSITIONS MAY BE GRADUAL.
5. GROUNDWATER LEVELS SHOWN ON THE LOGS WERE MEASURED AT THE TIME AND UNDER CONDITIONS INDICATED. FLUCTUATIONS IN THE WATER LEVEL MAY OCCUR WITH TIME.
6. LABORATORY TEST RESULTS:
 WC = WATER CONTENT (%) (ASTM D2216);
 DD = DRY DENSITY (pcf) (ASTM D2216);
 +4 = PERCENTAGE RETAINED ON NO. 4 SIEVE (ASTM D6913);
 -200 = PERCENTAGE PASSING NO. 200 SIEVE (ASTM D1140);
 LL = LIQUID LIMIT (ASTM D4318);
 PI = PLASTICITY INDEX (ASTM D4318);
 NP = NON-PLASTIC (ASTM D4318);
 WSS = WATER SOLUBLE SULFATES (%) (CP-L 2103);
 A-7-6 (21) = AASHTO CLASSIFICATION (GROUP INDEX) (AASHTO M 145).

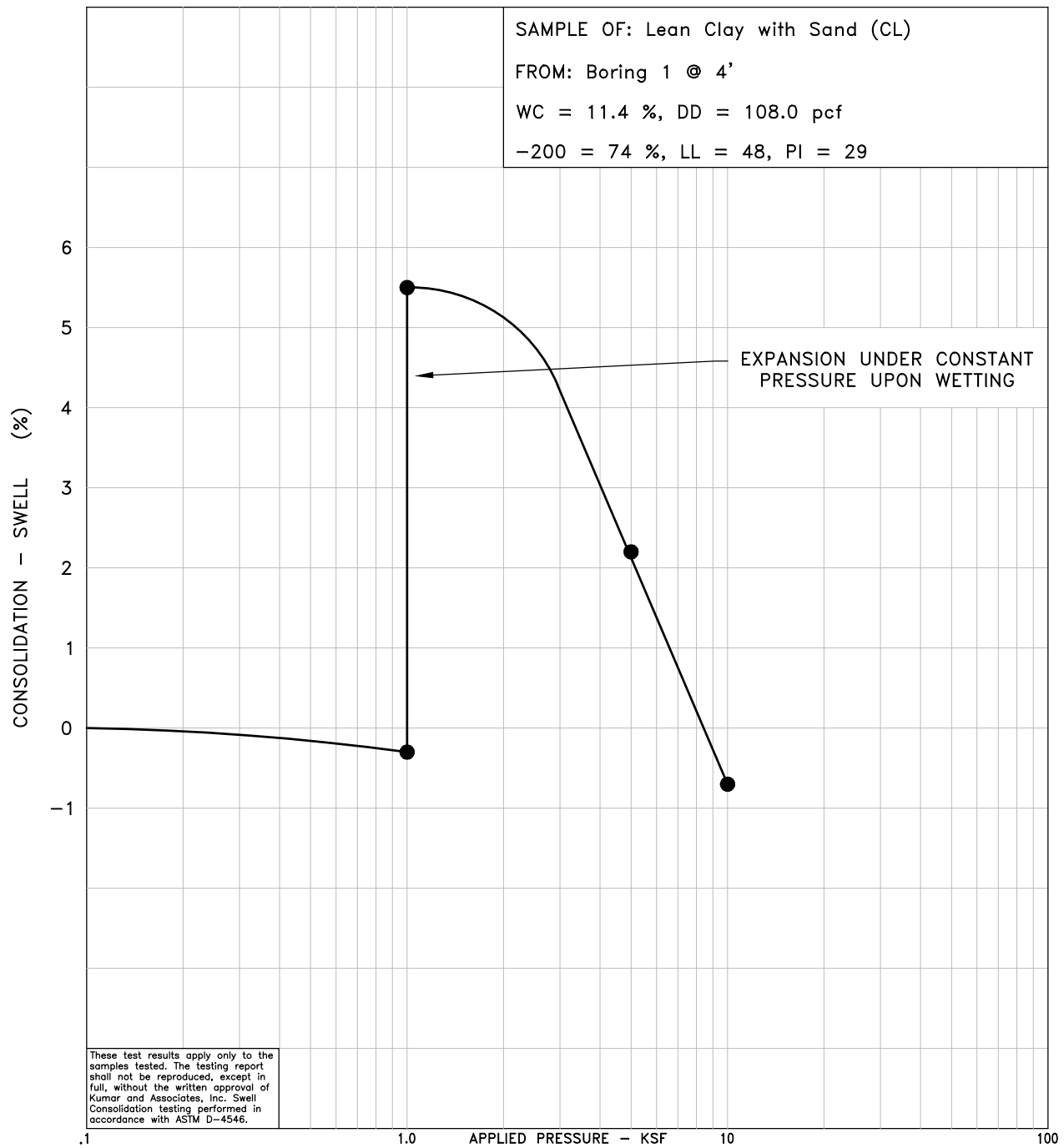
April 22, 2022 - 10:50am
 C:\Projects\2022\22-2-102_Ramah Water Treatment Plant Improvements (CWF)\Drafting\222102-02_10_03.dwg

SAMPLE OF: Sandy Lean Clay (CL)
 FROM: Boring 1 @ 2'
 WC = 8.9 %, DD = 110.8 pcf
 -200 = 60 %,



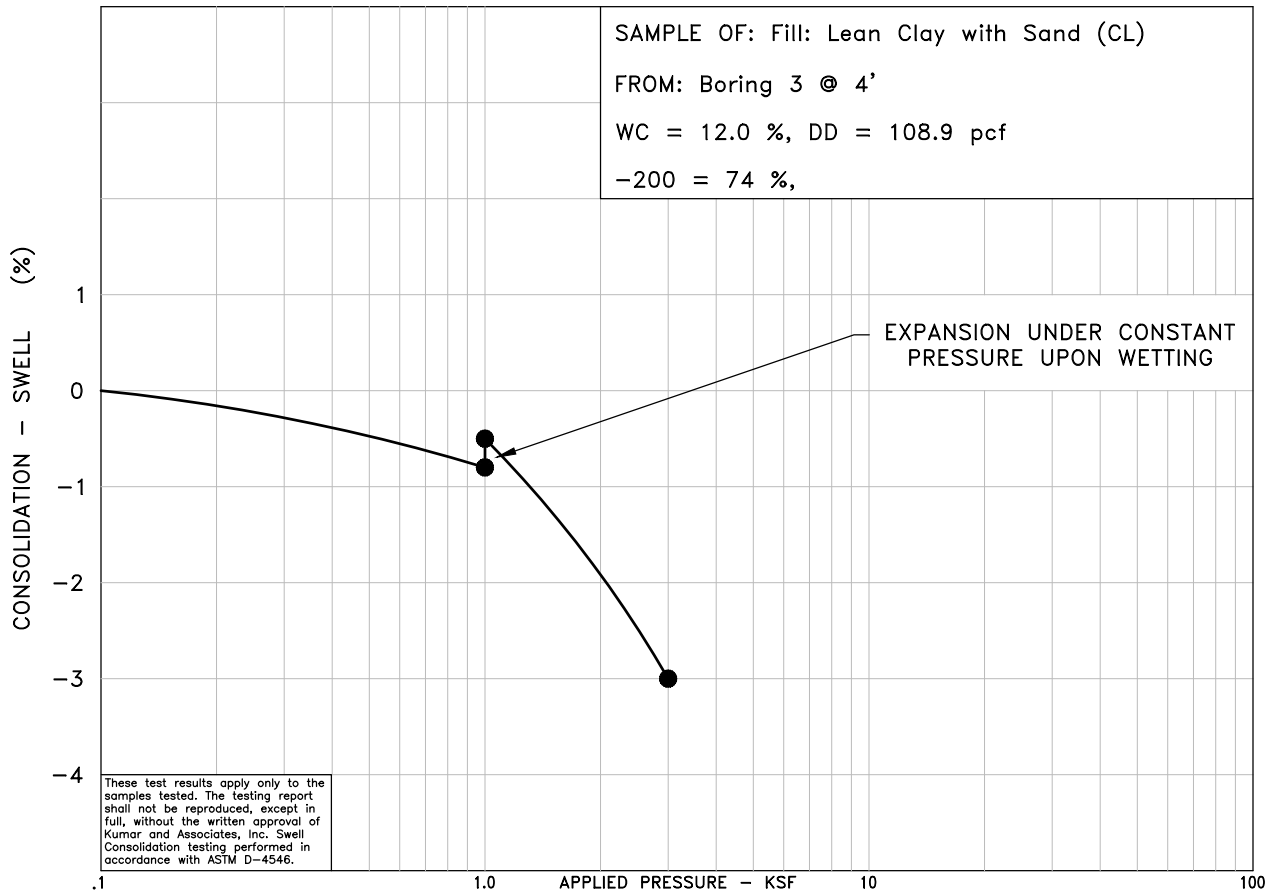
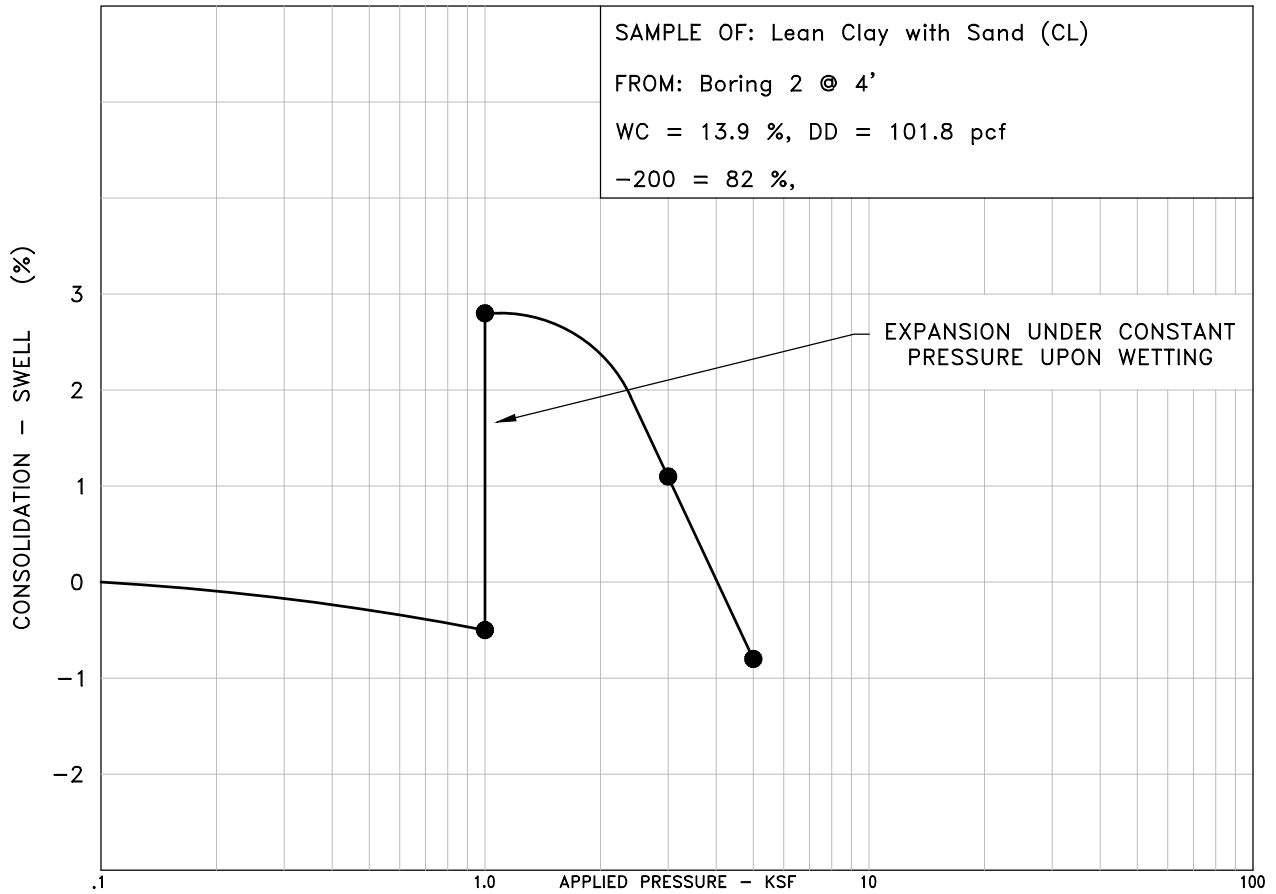
These test results apply only to the samples tested. The testing report shall not be reproduced, except in full, without the written approval of Kumar and Associates, Inc. Swell Consolidation testing performed in accordance with ASTM D-4546.

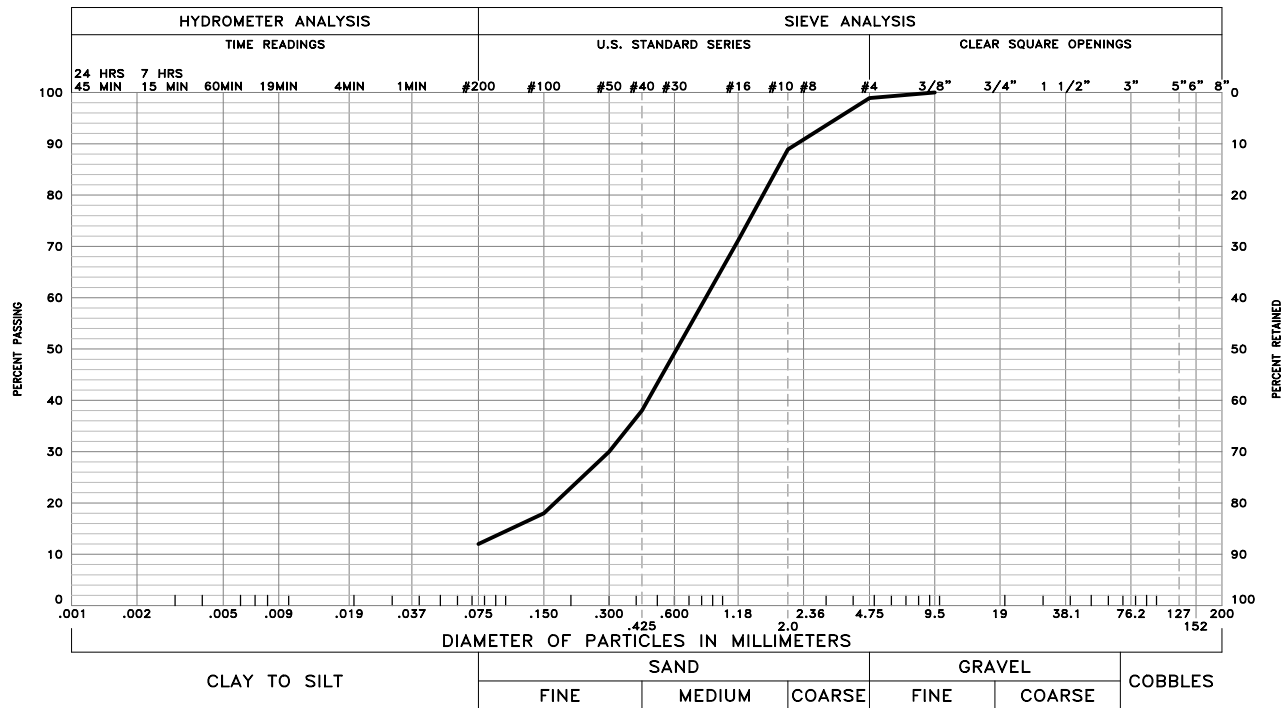
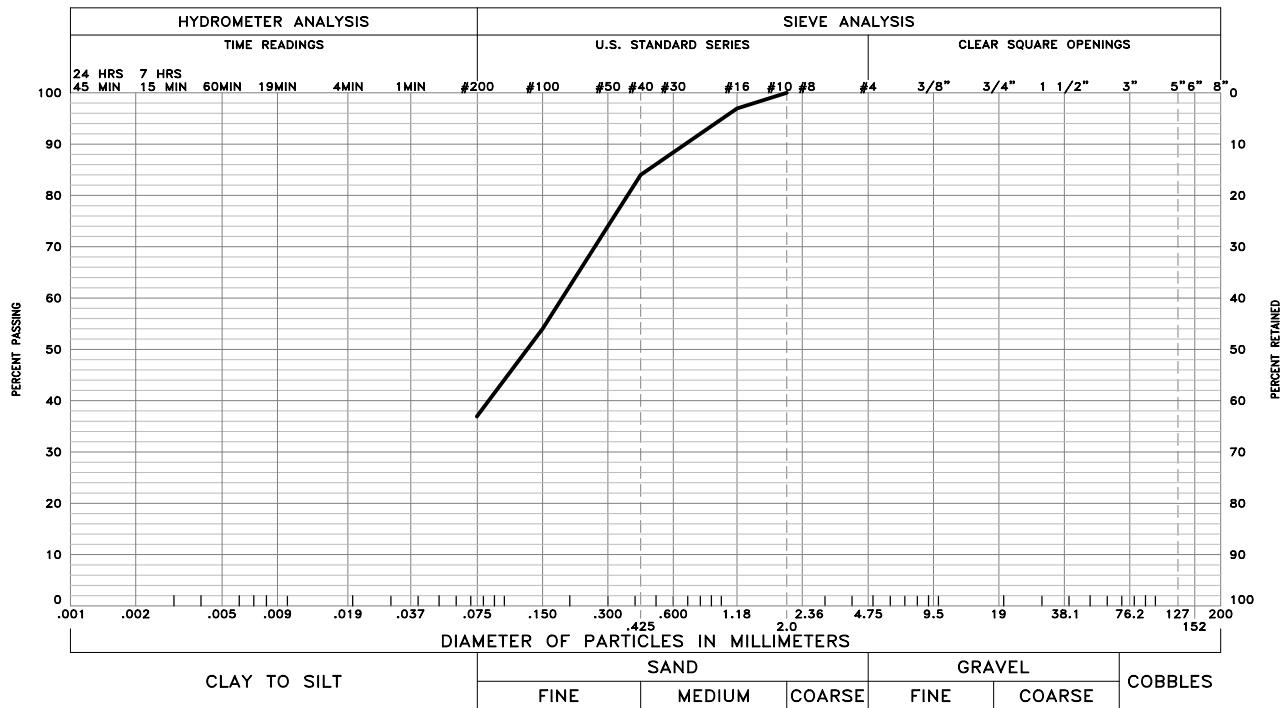
April 22, 2022 - 10:30am
 \\Projects\2022\22-2-102 Remah Water Treatment Plant Improvements (CMT)\Drafting\22102-04_1b_06.dwg



April 22, 2022 - 10:30am
 \\Projects\2022\22-2-102 Remesh Water Treatment Plant Improvements (CMT)\Drilling\22102-04 to 06.dwg

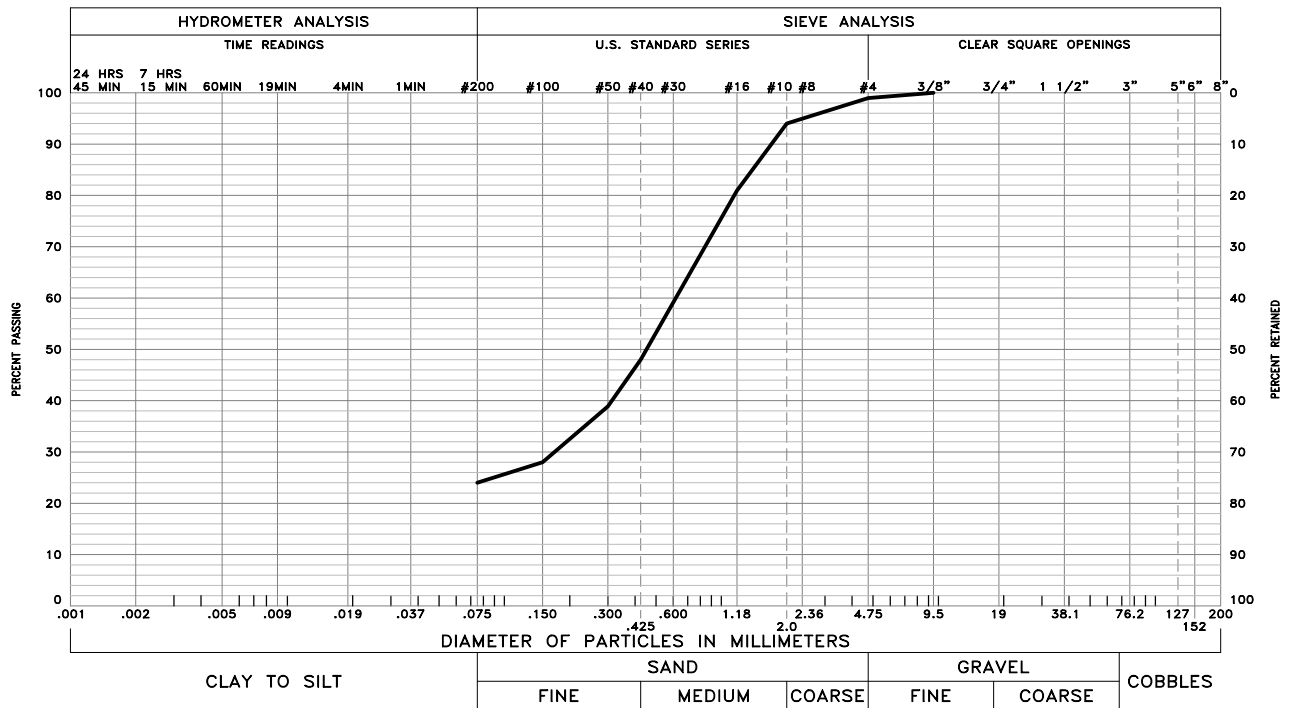
April 22, 2022 - 10:30am
V:\Projects\2022\22-2-102 Remesh Water Treatment Plant Improvements (CMT)\Drilling\22102-04_1b_06.dwg





These test results apply only to the samples which were tested. The testing report shall not be reproduced, except in full, without the written approval of Kumar & Associates, Inc. Sieve analysis testing is performed in accordance with ASTM D6913, ASTM D7928, ASTM C136 and/or ASTM D1140.

April 22, 2022 - 10:50am
 \\p01bmk\2022\22-2-102_Bamash Water Treatment Plant Improvements (CMT)\Drafting\222102-07 to 08.dwg



GRAVEL 1 % SAND 75 % SILT AND CLAY 24 %
 LIQUID LIMIT - PLASTICITY INDEX -
 SAMPLE OF: Clayey Sand (SC) FROM: Boring 3 @ 9'

These test results apply only to the samples which were tested. The testing report shall not be reproduced, except in full, without the written approval of Kumar & Associates, Inc. Sieve analysis testing is performed in accordance with ASTM D6913, ASTM D7928, ASTM C136 and/or ASTM D1140.

APPENDIX D: DRAINAGE PLAN

TOWN OF RAMAH WASTE WATER SYSTEM IMPROVEMENTS

DRAINAGE PLANS

EVstudio

Denver, CO
Evergreen, CO

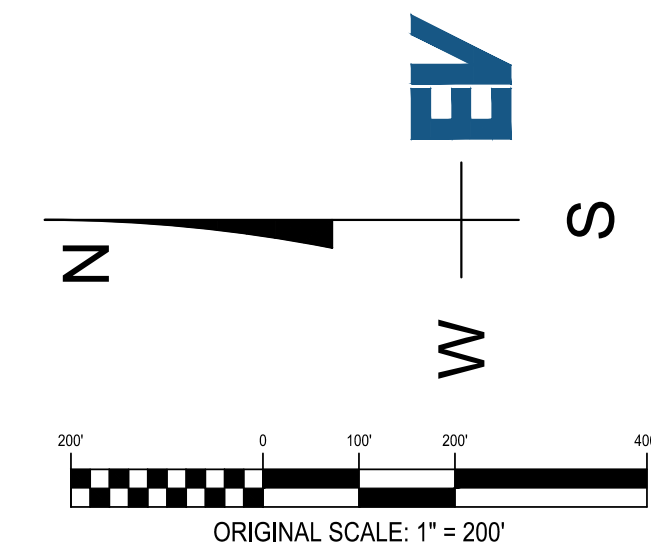
303.670.7242
design@evstudio.com
inspections@evstudio.com
www.evstudio.com

Contact:
Brian Welch, PE
brian.welch@evstudio.com
303.670.7242 x50

UTILITY NOTIFICATION CENTER



FOR MARKING OF UNDERGROUND MEMBER UTILITIES
EVSTUDIO ASSUMES NO RESPONSIBILITY FOR UTILITY
LOCATIONS. THE UTILITIES SHOWN ON THIS DRAWING
HAVE BEEN PLOTTED FROM THE BEST AVAILABLE
INFORMATION. IT IS, HOWEVER, THE CONTRACTOR'S
RESPONSIBILITY TO FIELD VERIFY THE LOCATION OF ALL
UTILITIES PRIOR TO CONSTRUCTION.



- UTILITY EXCEPTION 1.8.4
- DISTURBED AREA
- NON-DISTURBED AREA

If the evaporation ponds are covered under another state permit, they can be excluded from the County MS4 permit requirements on that basis.

This lift station would not be included in the linear utilities exclusion

WW SYSTEM IMPROVEMENTS
RAMAH RD, RAMAH, CO
80832

22A267

COPYRIGHT 2023

This document is an instrument of service, and as such remains the property of the Architect. Permission for use of this document is limited and can be extended only by written agreement with EVstudio, LLC.

REVISION:

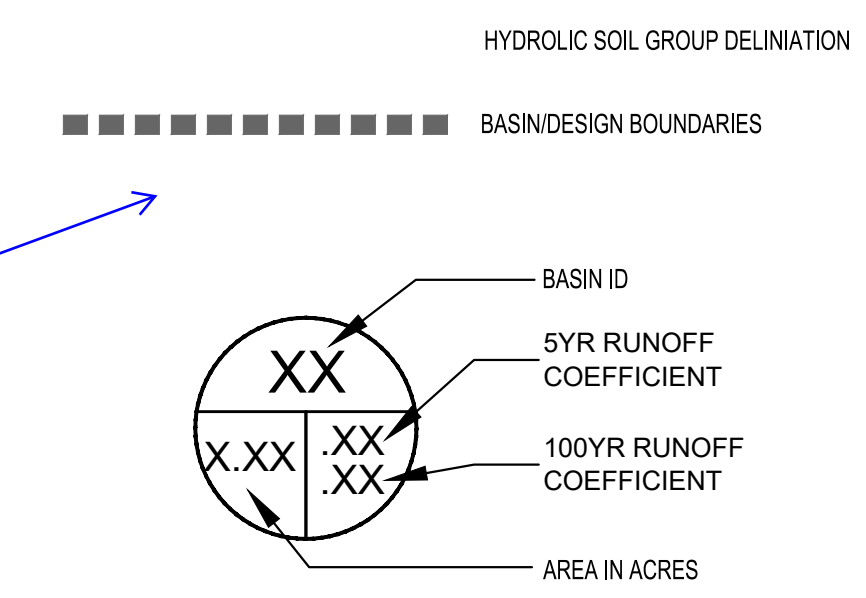
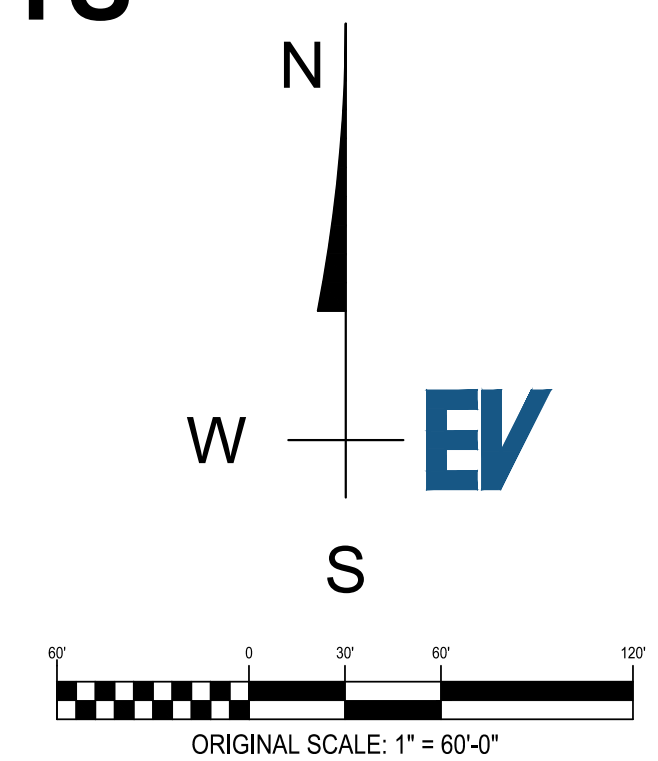
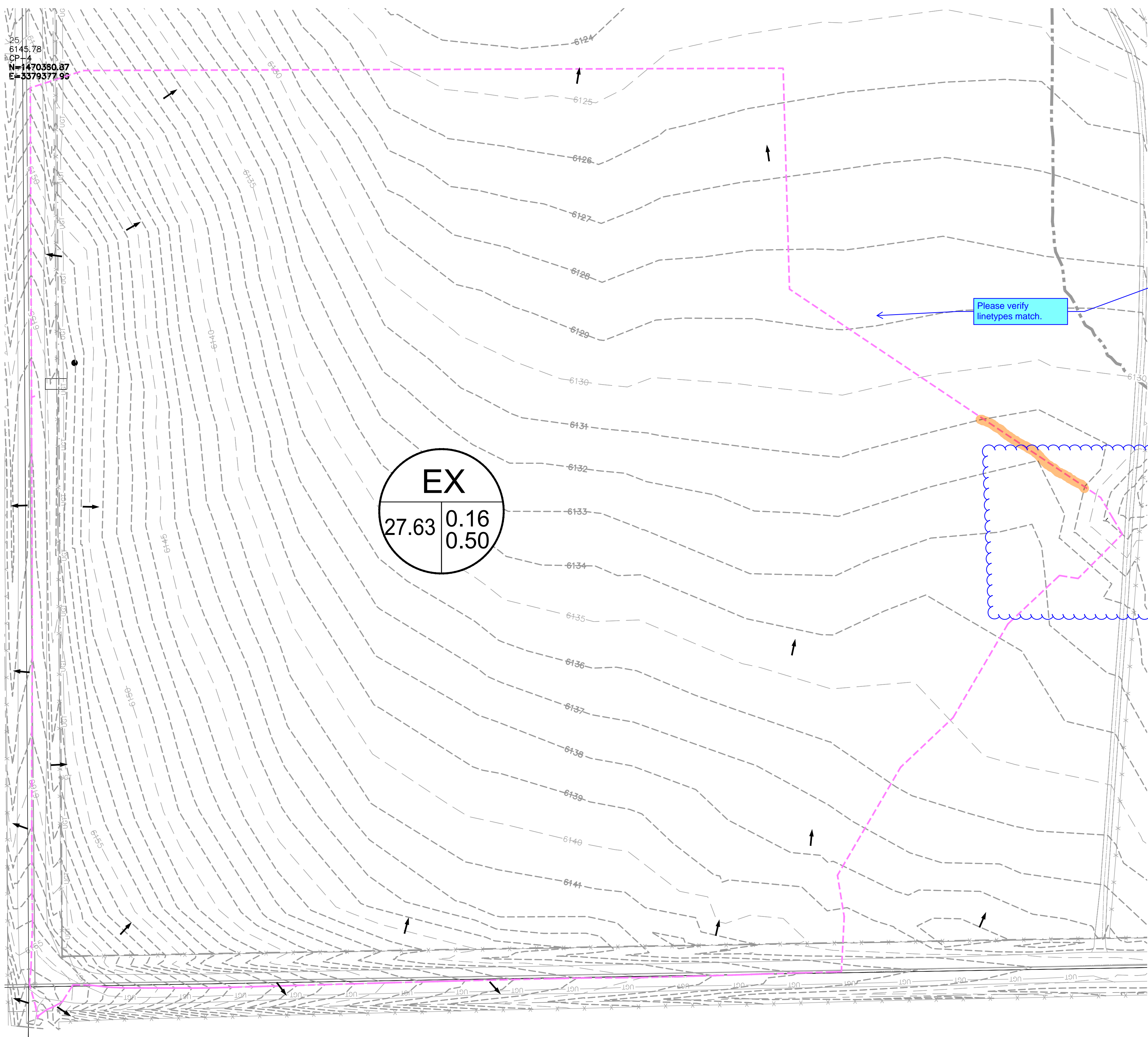
DATE: 10/27/2023
DRAWN BY: TRO
CHECKED BY: BMW

GENERAL LOCATION

C01

TOWN OF RAMAH WASTE WATER SYSTEM IMPROVEMENTS

DRAINAGE PLANS



Please verify linetypes match.

Please label property lines and streets.

Basin boundaries should not intersect the same contours twice. Please verify and update basin boundaries.

EX	
27.63	0.16
0.50	0.50

Basin ID	Basin runoff			
	C Values		Runoff (cfs)	
	5-year	100-year	5-year	100-year
Existing				
EX	0.16	0.50	11.63	84.61

EVstudio
Denver, CO
Evergreen, CO

303.670.7242
design@evstudio.com
inspections@evstudio.com
www.evstudio.com

Contact:
Brian Welch, PE
brian.welch@evstudio.com
303.670.7242 x50

UTILITY NOTIFICATION CENTER
The Promise.com

FOR MARKING OF UNDERGROUND MEMBER UTILITIES. EVSTUDIO ASSUMES NO RESPONSIBILITY FOR UTILITY LOCATIONS. THE UTILITIES SHOWN ON THIS DRAWING HAVE BEEN PLOTTED FROM THE BEST AVAILABLE INFORMATION. IT IS, HOWEVER, THE CONTRACTOR'S RESPONSIBILITY TO FIELD VERIFY THE LOCATION OF ALL UTILITIES PRIOR TO CONSTRUCTION.

WW SYSTEM IMPROVEMENTS
RAMAH RD, RAMAH, CO
80832
22A267

COPYRIGHT 2023
This document is an instrument of service, and as such remains the property of the Architect. Permission for use of this document is limited and can be extended only by written agreement with EVstudio, LLC.

REVISION:

DATE: 10/27/2023
DRAWN BY: TRO
CHECKED BY: BMW

EXISTING DRAINAGE

C02

Please "PCD File No. PPR2325" to the bottom right hand corner.

TOWN OF RAMAH WASTE WATER SYSTEM IMPROVEMENTS DRAINAGE PLANS



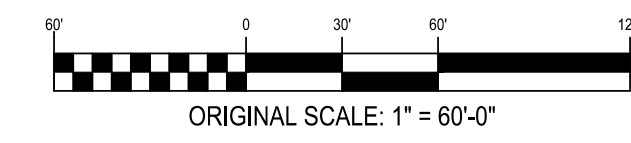
EVstudio
Denver, CO
Evergreen, CO

303.670.7242
design@evstudio.com
inspections@evstudio.com
www.evstudio.com

Contact:
Brian Welch, PE
brian_welch@evstudio.com
303.670.7242 x50

UTILITY NOTIFICATION CENTER
The Promise.com

EVSTUDIO ASSUMES NO RESPONSIBILITY FOR UTILITY LOCATIONS. THE UTILITIES SHOWN ON THIS DRAWING HAVE BEEN PLOTTED FROM THE BEST AVAILABLE INFORMATION. IT IS, HOWEVER, THE CONTRACTOR'S RESPONSIBILITY TO FIELD VERIFY THE LOCATION OF ALL UTILITIES PRIOR TO CONSTRUCTION.



- HYDROLOGIC SOIL GROUP DELINEATION
- BASIN/DESIGN BOUNDARIES
- DRAINAGE PATH
- UTILITY EXCEPTION I.7.1.B.4
- DISTURBED AREA
- NON-DISTURBED AREA
- DESIGN POINT
- BASIN ID
- 5YR RUNOFF COEFFICIENT
- 100YR RUNOFF COEFFICIENT
- AREA IN ACRES

Please label property lines and streets.

Please show and label all existing and proposed drainage infrastructure. Label all pertinent information such as material, size, type, shape, and slope.

Per ECM Chapter 3.2.4 please include in the final drainage report a discussion addressing suitable outfall location criteria. In existing conditions stormwater runoff sheet flows towards the north. In the proposed conditions design point 2 is now a concentrated flow. Please analyze the impact to the from the concentrated flow. Address ultimate suitable outfall and if it can receive developed flows without negative impacts to streambed stability and/or natural sediment transport functions. Include calculations to show the outfall is hydraulically adequate, and provide possible improvement recommendations (i.e. culvert, grading, etc). Note: Page 2 of the geohazard report identifies erosion occurring in this area.

Label swale slopes.

Basin ID	DESIGN POINT	C Values		Runoff (cfs)		Comments
		5-year	100-year	5-year	100-year	
WWTP		0.19	0.52	8.76	53.76	Contained on site
A-1 + OS-RD-1	1	0.18	0.52	3.84	24.41	
A-2 + OS-RD-2	2	0.17	0.51	4.07	27.75	

WASTEWATER SYSTEM IMPROVEMENTS
 RAMAH RD, RAMAH, CO 80832
 22A267

COPYRIGHT 2023
This document is an instrument of service, and as such remains the property of the Architect. Permission for use of this document is limited and can be extended only by written agreement with EVstudio, LLC.

REVISION:

DATE: 10/27/2023
DRAWN BY: TRO
CHECKED BY: BMW

PROPOSED DRAINAGE PLAN

C03

Please "PCD File No. PPR2325" to the bottom right hand corner.

