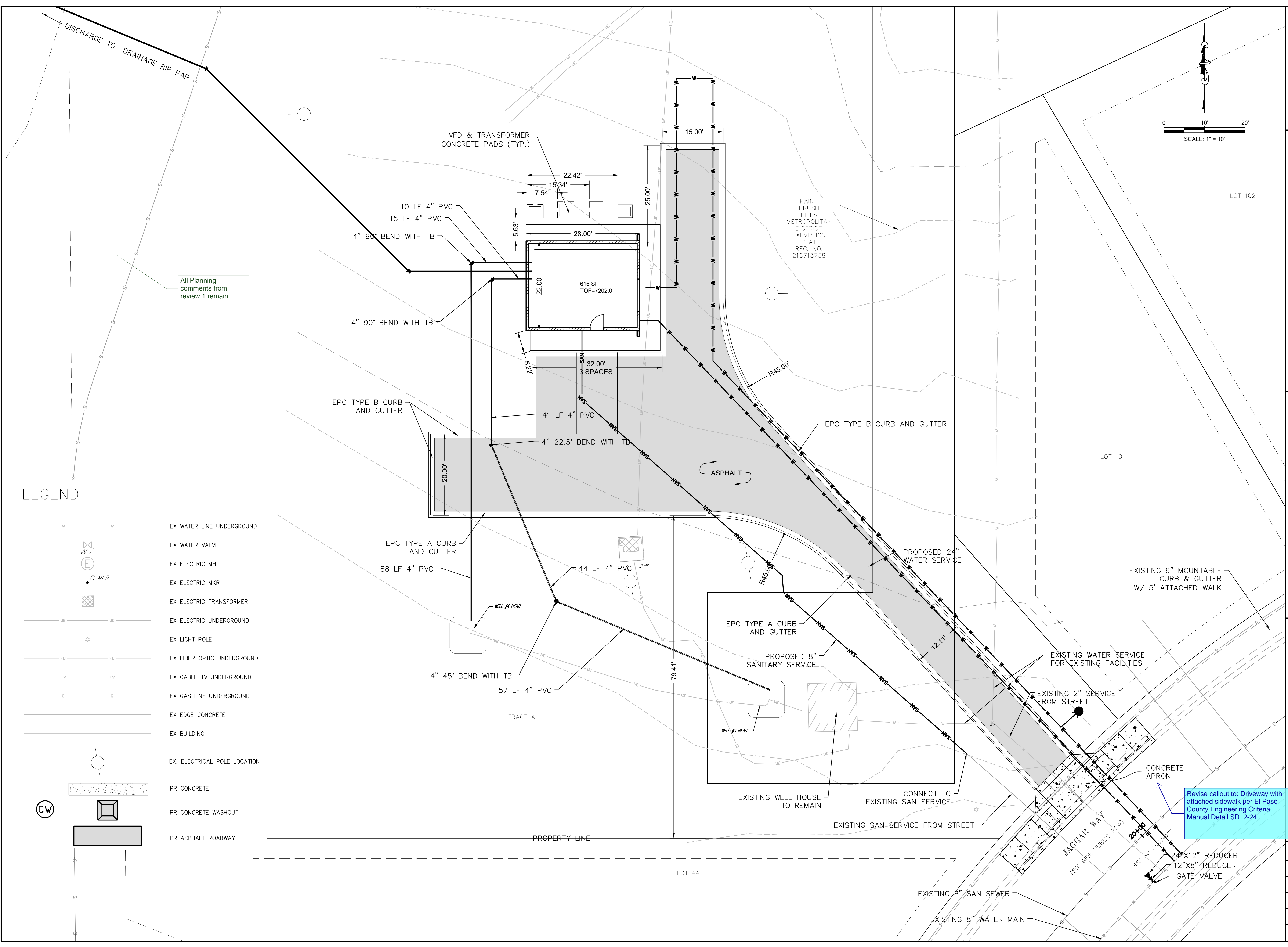


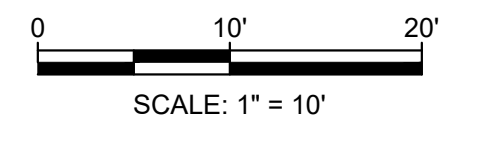
S:\1070.0010 - Paintbrush Hills - Wells - 384\dwg\sheet\SDP\04-Site Utility Plan.dwg, 5/17/2019 10:53:14 PM, DWG To PDF.pc3



LEGEND

- EX WATER LINE UNDERGROUND
- EX WATER VALVE
- EX ELECTRIC MH
- EX ELECTRIC MKR
- EX ELECTRIC TRANSFORMER
- EX ELECTRIC UNDERGROUND
- EX LIGHT POLE
- EX FIBER OPTIC UNDERGROUND
- EX CABLE TV UNDERGROUND
- EX GAS LINE UNDERGROUND
- EX EDGE CONCRETE
- EX BUILDING
- EX ELECTRICAL POLE LOCATION
- PR CONCRETE
- PR CONCRETE WASHOUT
- PR ASPHALT ROADWAY

All Planning comments from review 1 remain.,



48 hours before you dig, CALL UTILITY NOTIFICATION CENTER OF COLORADO (UNCC) **811**
 Gas, Electric, Telephone, Cable TV and
 Penetration Eastern Pipeline Locations
SCALE VERIFICATION
 BAR IS ONE INCH ON ORIGINAL DRAWING
 IF NOT ONE INCH ON THIS SHEET
 SCALE ACCORDINGLY

NO.	REVISIONS DESCRIPTION	DATE	BY

IRG AND ASSOCIATES, LLC
 4885 Ward Road, Suite 100 • Wheat Ridge, CO 80033
 Del Norte • Gypsum • Wheat Ridge
 303-293-8107 • www.igrgengineers.com

PAINT BRUSH HILLS PUMP HOUSE
 SITE AND UTILITY PLAN
 prepared for
PAINT BRUSH HILLS METROPOLITAN DISTRICT

Revise callout to: Driveway with attached sidewalk per El Paso County Engineering Criteria Manual Detail SD_2-24

DRAWN BY:	DESIGNED BY:
JOB NUMBER: 1070.0010	DATE: MARCH, 2019
SCALE: 1"=10'	DRAWING NAME:
SHEET NO: 4	of 8