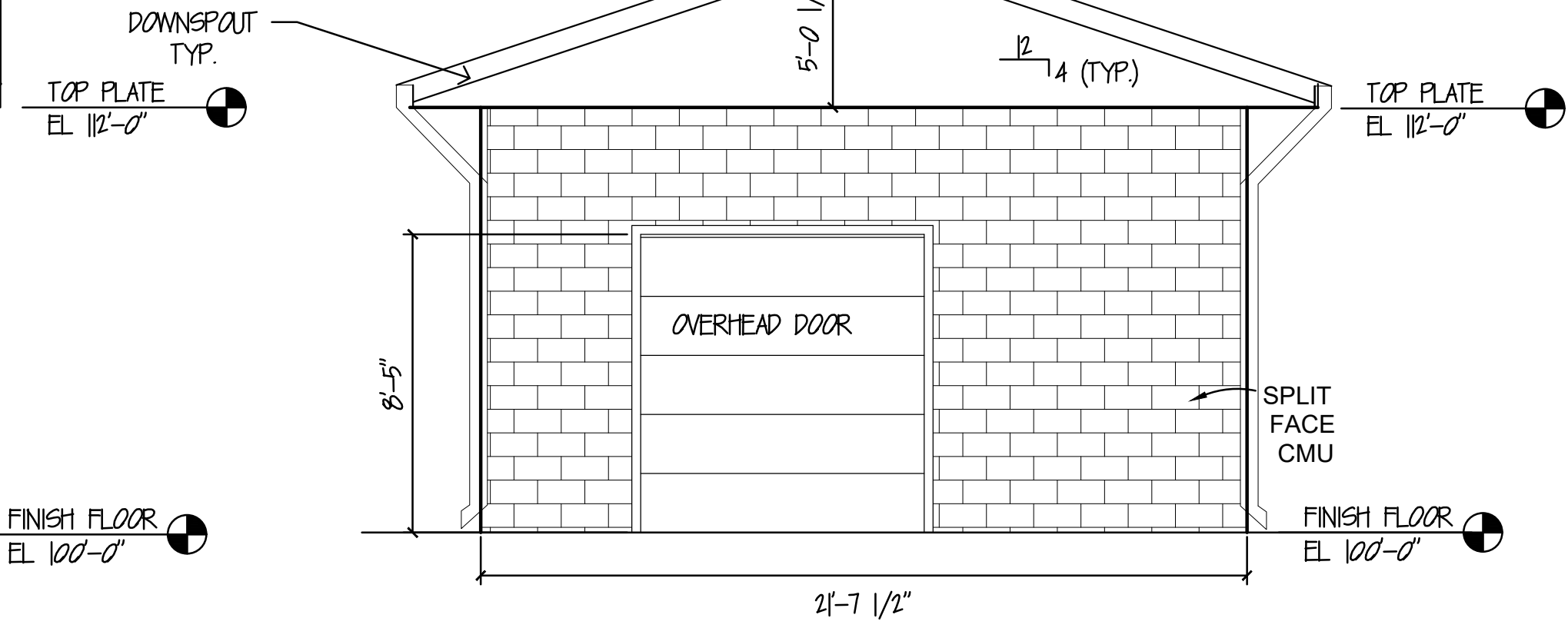
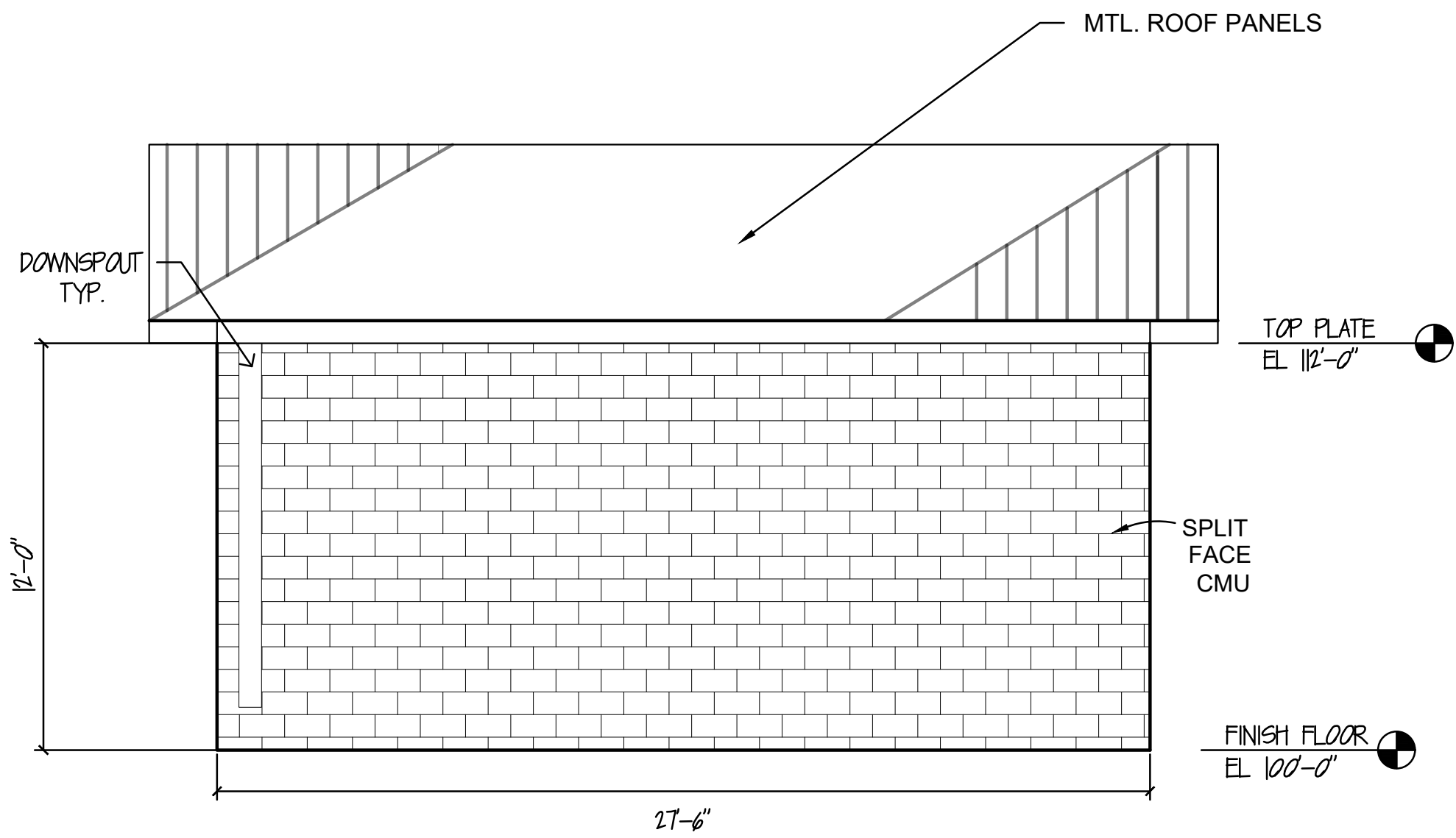


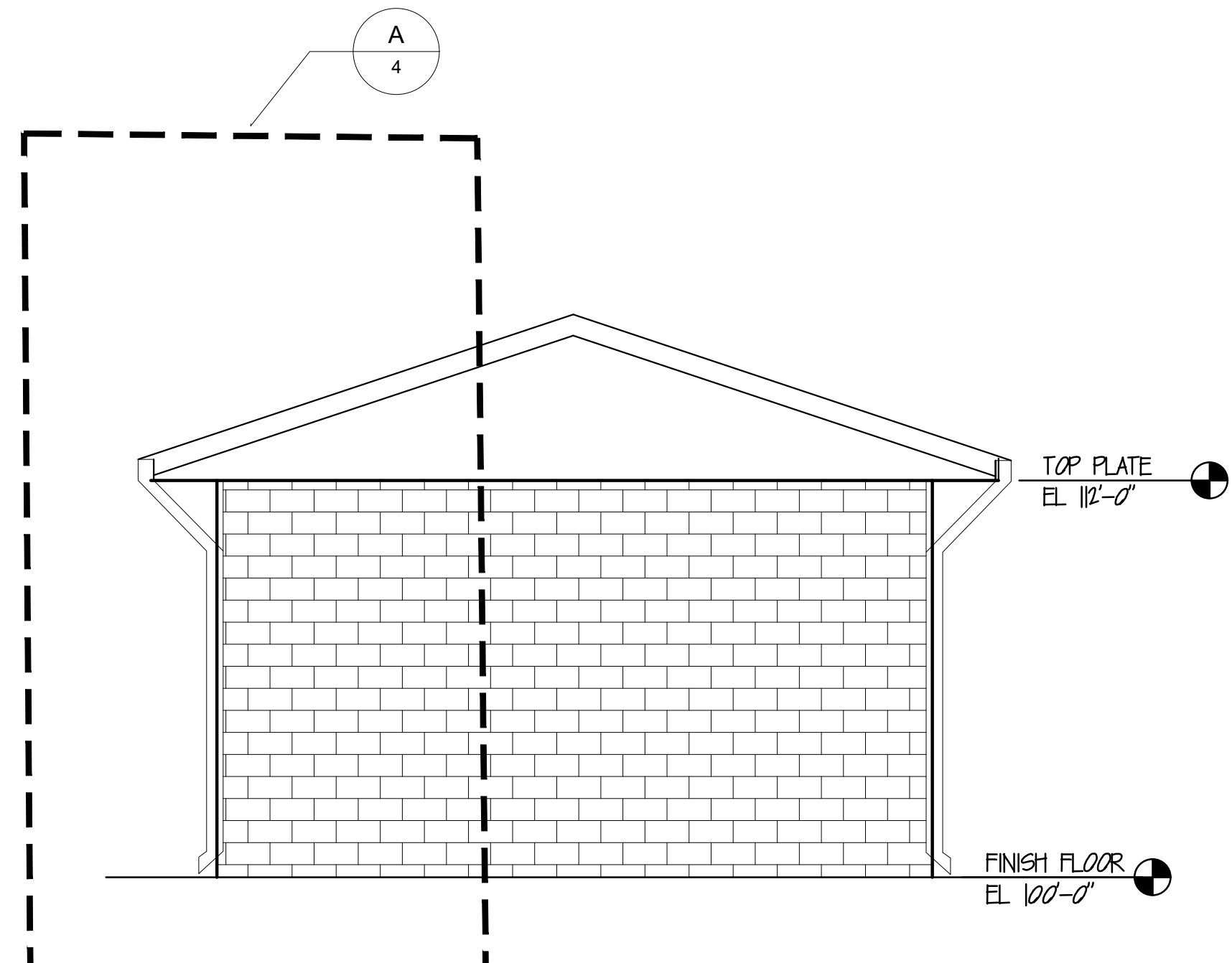
SOUTH ELEVATION  
1"=10'



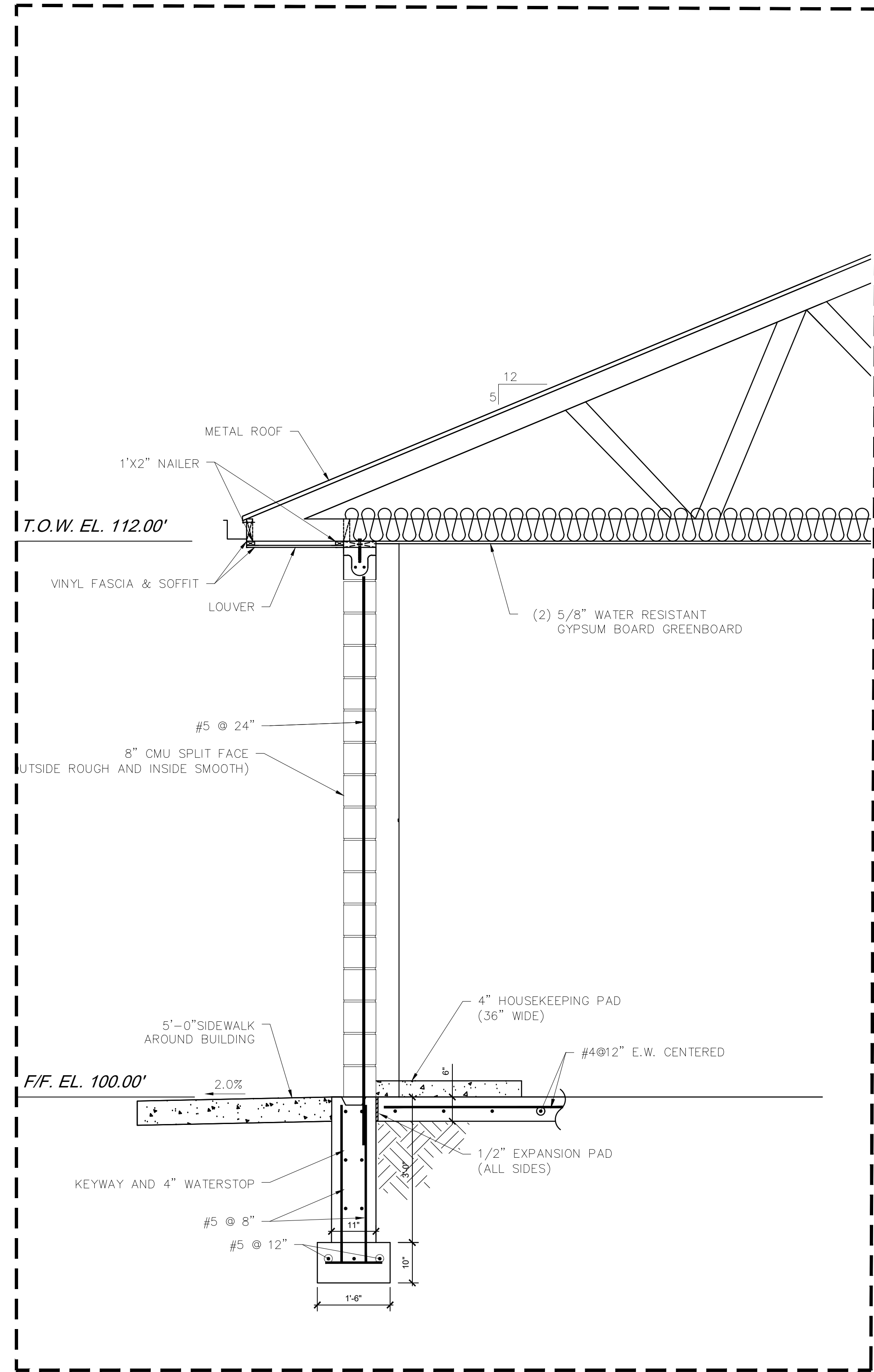
EAST ELEVATION  
1"=10'



NORTH ELEVATION  
1"=10'



WEST ELEVATION  
1"=10'



BUILDING WALL SECTION  
1"=2'

48 hours before you dig. CALL UTILITY NOTIFICATION CENTER OF COLORADO (UNCC)		811		Gas Electric, Telephone, CATV, and Potable Water Eastern Pipeline Locations		SCALE VERIFICATION BAR IS ONE INCH ON ORIGINAL DRAWING IF NOT ONE INCH ON THIS SHEET SCALE ACCORDINGLY			
REVISIONS		NO.		DESCRIPTION		DATE		BY	
		1		ISSUED FOR REVIEW		10/2018		KK	