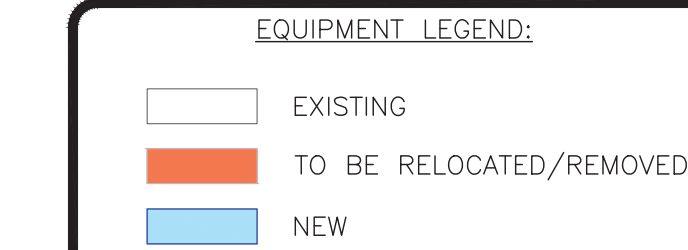


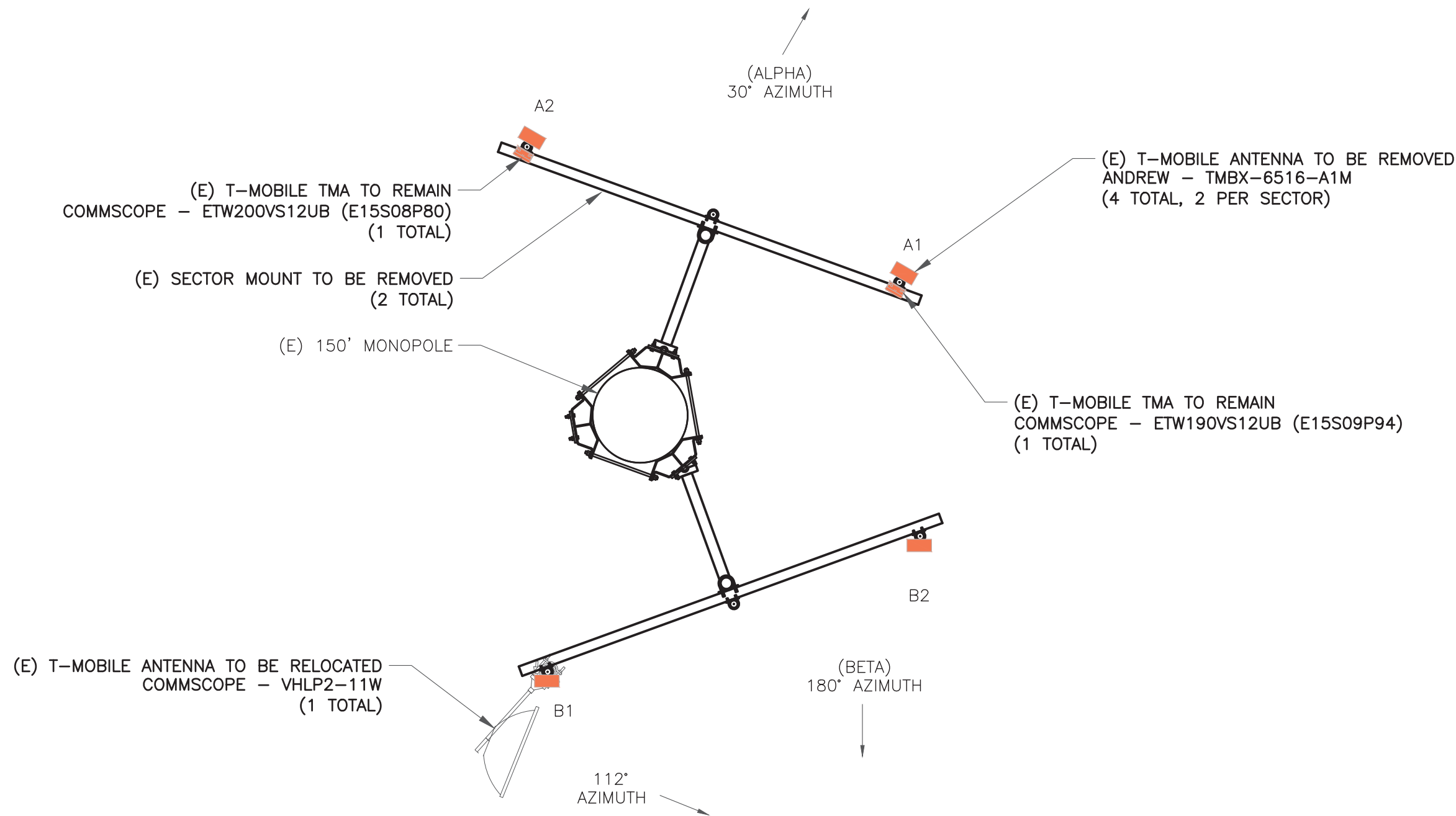
1 FINAL ELEVATION  
SCALE: NOT TO SCALE

NEW T-MOBILE EQUIPMENT:  
(2) COMMSCOPE - FFV-65C-R3-V1 ANTENNAS  
(2) NOKIA - AEHC ANTENNAS  
(2) COMMSCOPE - HCS 2.0 COVP  
(2) NOKIA - AHFIG RRU  
(2) NOKIA - AHLOA RRU  
MC-PM12M-AP4 W/MT-195-12HD, PVS 0508-U

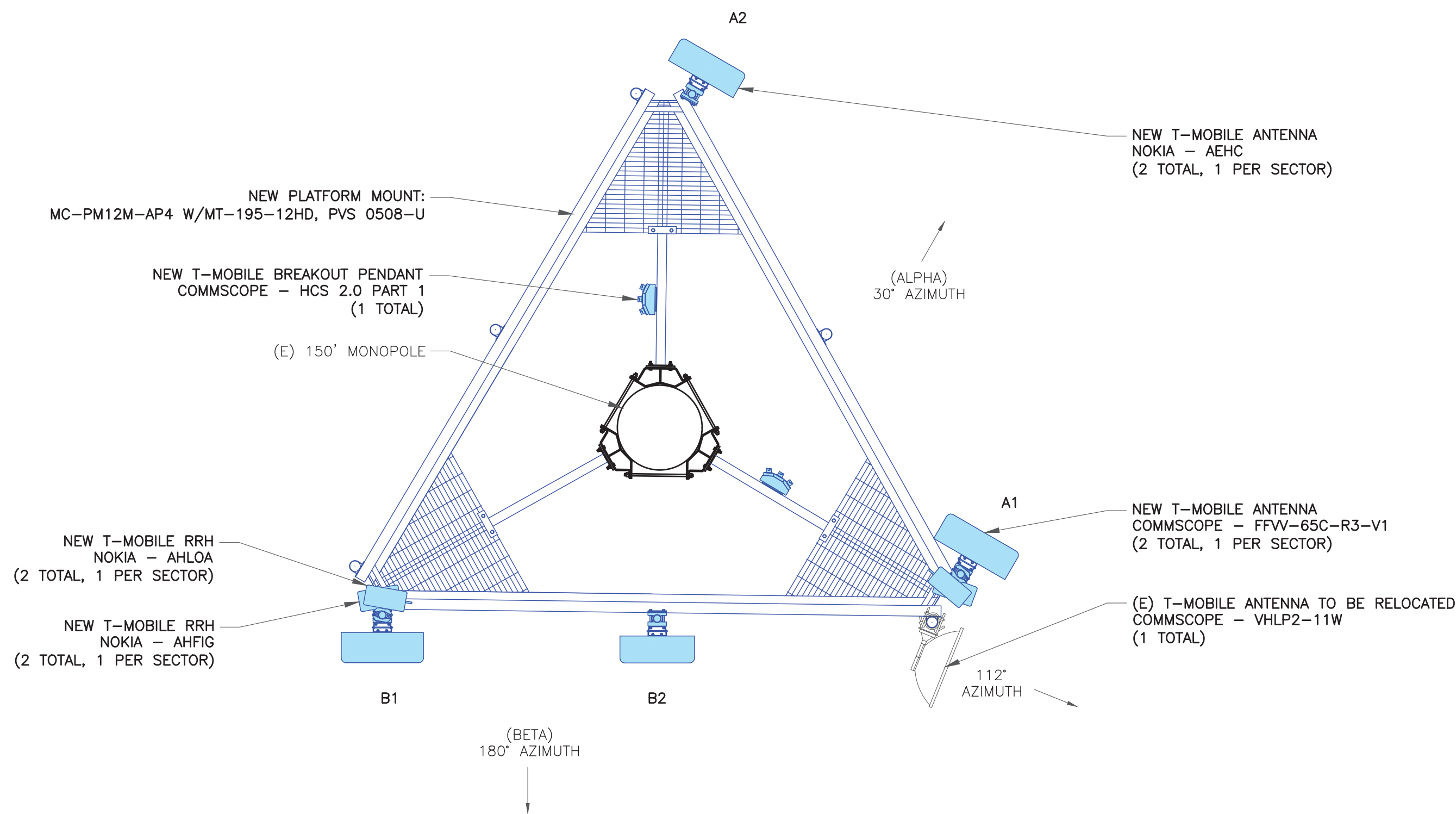


"LOOK UP" - CROWN CASTLE USA INC.  
SAFETY CLIMB REQUIREMENT:

THE INTEGRITY OF THE SAFETY CLIMB AND ALL COMPONENTS OF THE CLIMBING FACILITY SHALL BE CONSIDERED DURING ALL STAGES OF DESIGN, INSTALLATION, AND INSPECTION. TOWER MODIFICATION, MOUNT REINFORCEMENTS, AND/OR EQUIPMENT INSTALLATIONS SHALL NOT COMPROMISE THE INTEGRITY OR FUNCTIONAL USE OF THE SAFETY CLIMB OR ANY COMPONENTS OF THE CLIMBING FACILITY ON THE STRUCTURE. THIS SHALL INCLUDE, BUT NOT BE LIMITED TO: PINCHING OF THE WIRE ROPE, BENDING OF THE WIRE ROPE FROM ITS SUPPORTS, DIRECT CONTACT OR CLOSE PROXIMITY TO THE WIRE ROPE WHICH MAY CAUSE FRICTIONAL WEAR, IMPACT TO THE ANCHORAGE POINTS IN ANY WAY, OR TO IMPEDE/BLOCK ITS INTENDED USE. ANY COMPROMISED SAFETY CLIMB, INCLUDING EXISTING CONDITIONS MUST BE TAGGED OUT AND REPORTED TO YOUR CROWN CASTLE USA INC. POC OR CALL THE NOC TO GENERATE A SAFETY CLIMB MAINTENANCE AND CONTRACTOR NOTICE TICKET.



2 EXISTING ANTENNA PLAN  
SCALE: NOT TO SCALE



3 FINAL ANTENNA PLAN  
SCALE: NOT TO SCALE

T-Mobile

CROWN CASTLE

RAMAKER  
employee-owned  
(608) 643-4100 www.ramaker.com  
RAMAKER PROJECT #: 54074

T-MOBILE SITE NUMBER:  
DN04252A

BU #: 855798  
SUNVIEW RV PARK

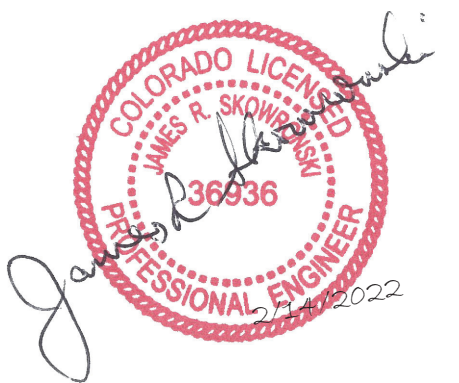
10410 STATE HIGHWAY 115  
IVYWILD, CO 80926

EXISTING 150' MONOPOLE

ISSUED FOR:

REV	DATE	DRWN	DESCRIPTION	DES./QA
0	2/9/2022	DJG	FINAL	JMO
1	03/02/2022	AMW	MA UPDATE	JMO

I hereby certify that this plan, specification, or report was prepared by me or under my direct supervision and that I am a duly Licensed Professional Engineer under the laws of the State of Colorado.



IT IS A VIOLATION OF LAW FOR ANY PERSON, UNLESS THEY ARE ACTING UNDER THE DIRECTION OF A LICENSED PROFESSIONAL ENGINEER, TO ALTER THIS DOCUMENT.

SHEET NUMBER:

C-2

REVISION:

1