

NOTE: THIS IS A COMPLETELY NEW SET OF LANDSCAPE PLANS, BY A NEW DESIGNER.

PLANT SCHEDULE

TREES	CODE	QTY	BOTANICAL NAME / COMMON NAME	CONT	CAL
	AG	2	ACER GRANDIDENTATUM / BIGTOOTH MAPLE 7S	B & B	1.5" CAL
	CS	3	CATALPA SPECIOSA / NORTHERN CATALPA S	B & B	1.5" CAL
	CO	6	CELTIS OCCIDENTALIS / COMMON HACKBERRY 3457DA	B & B	1.5" CAL
	GTS	6	GLEDITSIA TRIACANTHOS INERMIS 'SHADEMASTER' TM / SHADEMASTER LOCUST 4SA	B & B	1.5" CAL
	PE	22	PINUS EDULIS / PINON PINE 1256D	6' B&B	
	PP	18	PINUS PONDEROSA / PONDEROSA PINE 2678D	6' B&B	
	QB	5	QUERCUS BICOLOR / SWAMP WHITE OAK 4S	B & B	1.5" CAL
	EX-REM	4	REMOVE AS INDICATED / EXISTING TREE TO BE REMOVED RECOMMENDATION	EX	
SHRUBS	CODE	QTY	BOTANICAL NAME / COMMON NAME	SIZE	
	AC	16	ARCTOSTAPHYLOS X COLORADOENSIS 'CHIEFTAIN' / MANZANITA 5678DA	5 GAL	
	CMF	12	CHAMAEBATIARIA MILLEFOLIUM 'FERNBUSH' / FERNBUSH 123D	5 GAL	
	ES	7	ERICAMERIA NAUSEOSA SPECIOSA / DWARF BLUE RABBITBRUSH 1235D	5 GAL	
	FM	24	FORESTIERA NEOMEXICANA / NEW MEXICAN PRIVET MULTISTEM	5 GAL	
	JS	40	JUNIPERUS SABINA 'BROADMOOR' / BROADMOOR JUNIPER 568A	5 GAL	
	JMG	12	JUNIPERUS SCOPULORUM 'MOONGLOW' / UPRIGHT JUNIPER	5 GAL	
	MC	45	MAHONIA AQUIFOLIUM / OREGON GRAPE 4S	5 GAL	
	PAL	13	PEROVSKIA ATRIPLICIFOLIA 'LITTLE SPIRE' / DWARF RUSSIAN SAGE 12D	5 GAL	
	POD	52	PHYSOCARPUS OPULIFOLIUS 'DIABLO' / DIABLO NINEBARK 568SA	5 GAL	
	POL	15	PHYSOCARPUS OPULIFOLIUS 'LITTLE DEVIL' / DWARF PURPLE NINEBARK 568SA	5 GAL	
	PF	2	POTENTILLA FRUTICOSA 'GOLDFINGER' / GOLDFINGER POTENTILLA 4567S	5 GAL	
	PBP	9	PRUNUS BESSEYI 'PAWNEE BUTTES' / SAND CHERRY 1345A	5 GAL	
	RG	10	RHUS AROMATICA 'GRO-LOW' / GRO-LOW FRAGRANT SUMAC 23456DA	5 GAL	
GRASSES	CODE	QTY	BOTANICAL NAME / COMMON NAME	SIZE	
	BB	37	BOUTELOUA GRACILIS 'BLONDE AMBITION' / BLUE GRAMA 1235D	1 GAL	
	SW	3	SPOROBOLUS WRIGHTII / BIG SACATON	1 GAL	
GROUND COVERS	CODE	QTY	BOTANICAL NAME / COMMON NAME	CONT	
	NLS	183,805 SF	NATIVE LAWN SEED MIX / PAWNEE BUTTES SEED CO NATIVE LAWN MIX 2-3 LBS PER 1000 SQUARE FEET. IRRIGATED SEED MIX.	SEED	
MULCHES	CODE	QTY	BOTANICAL NAME / COMMON NAME	CONT	
	RM	8,120 SF	ROCK MULCH / RIVER ROCK 1"-2" PER OWNER APPROVAL. PLACE TO A UNIFORM DEPTH OF 3" OVER PERMEABLE WEED BARRIER FABRIC.	MULCH	
	WM	4,997 SF	SHREDDED CEDAR MULCH / WOOD MULCH - 3" MIN DEPTH GORILLA HAIR OR SHREDDED REDWOOD MULCH. NO WEED BARRIER UNDER WOOD MULCH AREAS	MULCH	

OVERALL LANDSCAPE PLAN

SCALE: 1" = 60'

SITE CATEGORY REQUIREMENTS

LANDSCAPE SETBACKS (or Double Frontage Lot Streetscapes)					
Street Name or Zone Boundary (elev.)	Street Classification	Width (in ft.) Req./Prov.	Linear Footage	Tree/Foot Required	No. of Trees Req./Prov.
Struthers Road	Minor Arterial	20 / 20	980	1 / 25	39 / 39
Shrub Substitutes Required / Provided					
		Ornamental Grass Substitutes Required / Provided	Setback Plant Abbr. Denoted on Plan*	Percent Ground Plane Veg. Req. / Provided	
0 / 0		0 / 0	LS-SL	87%	
MOTOR VEHICLE LOTS					
No. of Vehicle Spaces Provided	Shade Trees (1/15) Required / Provided	Vehicle Lot Frontage (s)	Length of Frontage (ft.) (excluding driveways)	2/3 Length of Frontage (ft.)	
7	1 / 1	-	-	-	
Frontage Screening Provided (LF)					
Evergreen LF Req.(50%) / Prov.	Length of Screening Wall or Berm Provided	Vehicle Lot Plant Abbr. on Plan	Percent Ground Plane Veg. Req. / Provided		
-	-	-	-		
INTERNAL LANDSCAPING					
Net Site Area (SF) (less public R.O.W.)	Percent Min. Internal Area (%)	Internal Area (SF) Required / Provided	Internal Trees (1/500 SF) Required / Provided	Internal Trees (1/500 SF) Shrub Sub Req/Prov	
152,172 (Tract A)	5%	7,609 / 17,483 (on-site)	16 / 8	80 / 80	
277,846 (Lot 1)	5%	13,893 / 17,483 (on-site)	28 / 14	140 / 140	
Internal Plant Abbr. Denoted on Plan					
IN		Percent Ground Plane Veg. Req. / Provided		75% / 86 %	
LANDSCAPE BUFFERS & SCREENS - N/A					

REFERENCE NOTES SCHEDULE

SYMBOL	DESCRIPTION	QTY
[1]	PLACE SHREDDED CEDAR MULCH AROUND BASE OF ALL PERENNIALS AND GRASSES IN LARGE COBBLE AREAS. MASSED PERENNIALS TO RECEIVE LARGE RING AROUND ENTIRE GROUP (TYP). WOOD MULCH NOT REQUIRED AROUND BASE OF PLANTS LOCATED IN PEA GRAVEL.	
[2]	MINIMUM 3' ROOTBALL OFFSET FROM BUILDING, TYP.	
[3]	PLACE PLANTS TO PROVIDE MIN. 2' CLEARANCE FROM BACK OF CURB AT MATURE SPREAD.	
SYMBOL	DESCRIPTION	QTY
[01-04]	SEED ALL DISTURBED AREAS WITH NATIVE LAWN MIX UNLESS OTHERWISE NOTED.	
32 LANDSCAPE IMPROVEMENTS		
SYMBOL	DESCRIPTION	QTY
[32-01]	14 G ROLL TOP STEEL EDGING, STAKED 30" OC MAX.	12 LF
SYMBOL	DESCRIPTION	QTY
[SM-101]	ALL SEEDED AREAS TO BE AMENDED AND HYDROSEEDED. PLACE EROSION CONTROL MAT ON ALL SLOPES EXCEEDING 4:1.	

Native Lawn Mix
 (90%) Buffalograss
 (10%) Blue Grama
 Seed @ 2-3 lb / 1000 sf

SEED MAINTENANCE: MOW NATIVE LAWN MIX ABOUT 1/2 THE AMOUNT AS SODDED TURFGRASS OR AS NEEDED. HAND PULL WEED OR SPOT WEED USING A BROADLEAF APPLICATION DURING FIRST 3 GROWING SEASONS.

DISTURBED AREAS TO BE RESEED WITH NATIVE LAWN MIX UNLESS OTHERWISE NOTED. RE: CIVIL PLANS



See PPR-16-003 for the original approval. This plan only replaces the landscaping plan. All other components of the original approval still apply.

The landscaping plan shows the same number of trees/shrubs, but replaces the plan type.

REVISIONS:
 12-26-18 NEW PLAN

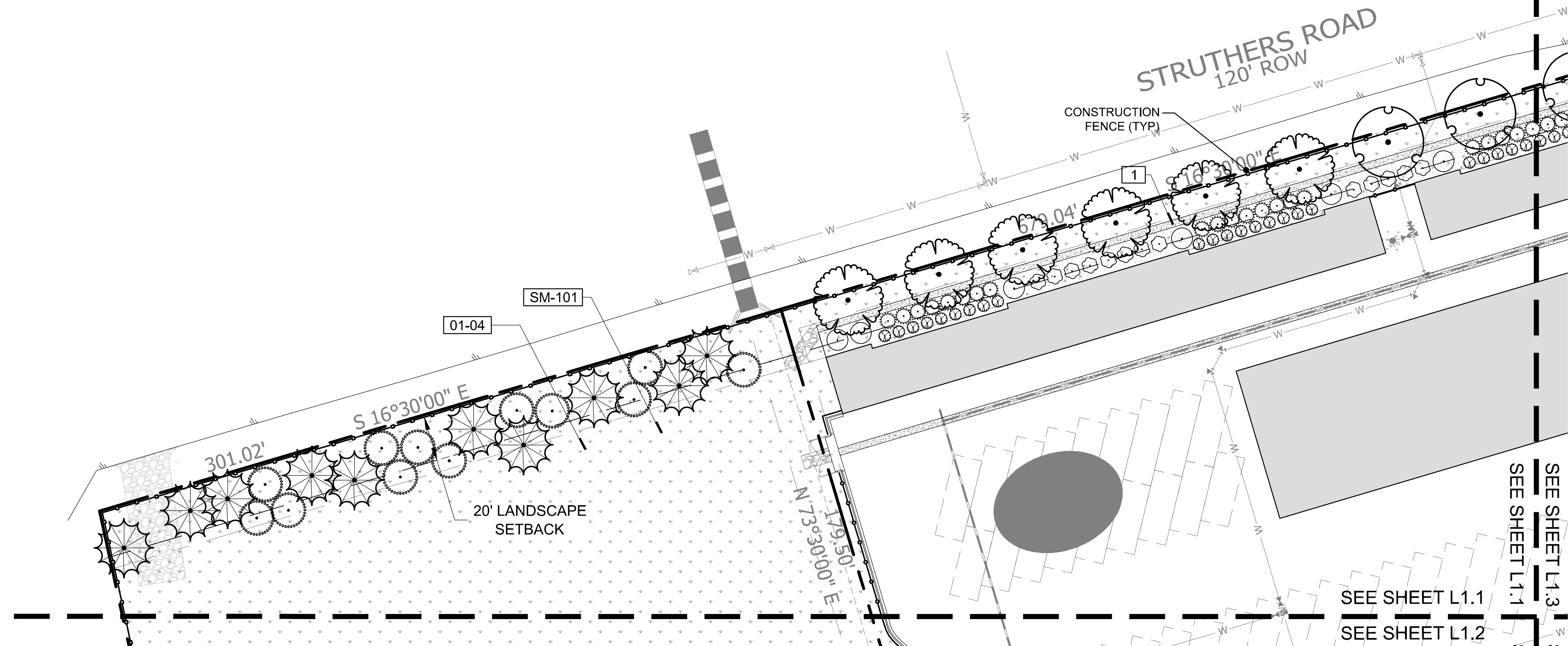
NDS
 NATURAL DESIGN SOLUTIONS
 Landscape Architecture
 Land Planning - Irrigation Design
 5539 4th Drive, Longmont, CO 80503
 (303) 443-0588 | nds@naturaldesignsolutions.com

GLEN EAGLE STORAGE
NORTHGATE, COLORADO SPRINGS, CO
FINAL LANDSCAPE PLAN

PROJ. NO.:
 DATE: 12.26.18
 SCALE: See Sheet
 DRAWN: JRO
 CHKD BY: NAM
 SHEET L10

PARADISE VILLAS

STRUTHERS ROAD
120' ROW



LANDSCAPE PLAN ENLARGEMENT
SCALE: 1" = 30'

PLAN NOTES:

- NO SUBSTITUTIONS WITHOUT PREVIOUS APPROVAL OF LANDSCAPE ARCHITECT. UNAPPROVED DEVIATIONS FROM THIS PLAN WILL BE RECTIFIED AT CONTRACTORS EXPENSE.
- CONTRACTOR TO PROVIDE ANALYSIS OF ANY AMENDMENTS PROPOSED FOR PLANTING AREAS PRIOR TO INSTALLATION OF SUCH MATERIALS.
- NO FABRIC UNDER WOOD MULCH IN ANY AREAS. ALL PLANTS IN ROCK MULCH AREAS TO RECEIVE SHREDDED CEDAR MULCH RINGS EQUAL TO THE ROOTBALL OF THE PLANT. MASSING SHALL HAVE CONTINUOUS SHREDDED MULCH BANDS. SEE DETAILS SHEET L2.0.
- DRIPLINE TO BE PLACED OVER WEED BARRIER FABRIC AND STAKED ON TOP OF WEED BARRIER.
- WEED BARRIER CUTOUTS FOR PLANTS IN ROCK AREAS SHALL ACCOUNT FOR MATURE SIZE OF PLANTS, AND EQUAL AT LEAST THE DIAMETER OF THE ROOTBALL. SEE DETAILS SHEET L2.0
- ALL EMITTERS PER IRRIGATION PLAN.
- ALL EMITTERS TO BE PLACED AT THE APPROPRIATE LOCATIONS. ALL EMITTERS TO USE MICRO TUBING, STAKES, AND BUG CAPS.
- SEE LANDSCAPE DETAILS SHEET FOR ADDITIONAL NOTES AND DETAILS.
- RETAIN 10% OF ALL PLANT TAGS PER SPECIES FOR DURATION OF WARRANTY PERIOD.

Native Lawn Mix (90%) Buffalograss (10%) Blue Grama Seed @ 2-3 lb / 1000 sf	SEED MAINTENANCE: MOW NATIVE LAWN MIX ABOUT 1/2 THE AMOUNT AS SODDED TURFGRASS OR AS NEEDED. HAND PULL WEED OR SPOT WEED USING A BROADLEAF APPLICATION DURING FIRST 3 GROWING SEASONS.	DISTURBED AREAS TO BE RESEEDED WITH NATIVE LAWN MIX UNLESS OTHERWISE NOTED. RE: CIVIL PLANS
---	--	---

PLANT LEGEND

TREES	CODE	BOTANICAL NAME / COMMON NAME
	AG	ACER GRANDIDENTATUM / BIGTOOTH MAPLE
	CS	CATALPA SPECIOSA / NORTHERN CATALPA
	CO	CELTIS OCCIDENTALIS / COMMON HACKBERRY
	GTS	GLEDITSIA TRIACANTHOS INERMIS 'SHADEMASTER' TM / SHADEMASTER LOCUST
	PE	PINUS EDULIS / PINON PINE
	PP	PINUS PONDEROSA / PONDEROSA PINE
	QB	QUERCUS BICOLOR / SWAMP WHITE OAK
SHRUBS	CODE	BOTANICAL NAME / COMMON NAME
	AC	ARCTOSTAPHYLOS X COLORADOENSIS 'CHIEFTAIN' / MANZANITA
	CMF	CHAMAEBATIARIA MILLEFOLIUM 'FERNBUSH' / FERNBUSH
	ES	ERICAMERIA NAUSEOSA SPECIOSA / DWARF BLUE RABBITBRUSH
	FM	FORESTIERA NEOMEXICANA / NEW MEXICAN PRIVET
	JS	JUNIPERUS SABINA 'BROADMOOR' / BROADMOOR JUNIPER
	JMG	JUNIPERUS SCOPULORUM 'MOONGLOW' / UPRIGHT JUNIPER
	MC	MAHONIA AQUIFOLIUM / OREGON GRAPE
	PAL	PEROVSKIA ATRIPLICIFOLIA 'LITTLE SPIRE' / DWARF RUSSIAN SAGE
	POD	PHYSOCARPUS OPULIFOLIUS 'DIABLO' / DIABLO NINEBARK
	POL	PHYSOCARPUS OPULIFOLIUS 'LITTLE DEVIL' / DWARF PURPLE NINEBARK
	PF	POTENTILLA FRUTICOSA 'GOLDFINGER' / GOLDFINGER POTENTILLA
	PBP	PRUNUS BESSEYI 'PAWNEE BUTTES' / SAND CHERRY
	RG	RHUS AROMATICA 'GRO-LOW' / GRO-LOW FRAGRANT SUMAC
GRASSES	CODE	BOTANICAL NAME / COMMON NAME
	BB	BOUTELOUA GRACILIS 'BLONDE AMBITION' / BLUE GRAMA
	SW	SPOROBOLUS WRIGHTII / BIG SACATON
GROUND COVERS	CODE	BOTANICAL NAME / COMMON NAME
	NLS	NATIVE LAWN SEED MIX / PAWNEE BUTTES SEED CO NATIVE LAWN MIX
MULCHES	CODE	BOTANICAL NAME / COMMON NAME
	RM	ROCK MULCH / RIVER ROCK 1"-2"
	WM	SHREDDED CEDAR MULCH / WOOD MULCH - 3" MIN DEPTH

REFERENCE NOTES SCHEDULE

SYMBOL	DESCRIPTION	QTY
1	PLACE SHREDDED CEDAR MULCH AROUND BASE OF ALL PERENNIALS AND GRASSES IN LARGE COBBLE AREAS. MASSED PERENNIALS TO RECEIVE LARGE RING AROUND ENTIRE GROUP (TYP). WOOD MULCH NOT REQUIRED AROUND BASE OF PLANTS LOCATED IN PEA GRAVEL.	
2	MINIMUM 3' ROOTBALL OFFSET FROM BUILDING, TYP.	
3	PLACE PLANTS TO PROVIDE MIN. 2' CLEARANCE FROM BACK OF CURB AT MATURE SPREAD.	
SYMBOL	DESCRIPTION	QTY
01-04	SEED ALL DISTURBED AREAS WITH NATIVE LAWN MIX UNLESS OTHERWISE NOTED.	
SYMBOL	DESCRIPTION	QTY
32-01	14 G ROLL TOP STEEL EDGING, STAKED 30" OC MAX.	12 LF
SYMBOL	DESCRIPTION	QTY
SM-101	ALL SEEDED AREAS TO BE AMENDED AND HYDROSEEDED. PLACE EROSION CONTROL MAT ON ALL SLOPES EXCEEDING 4:1.	

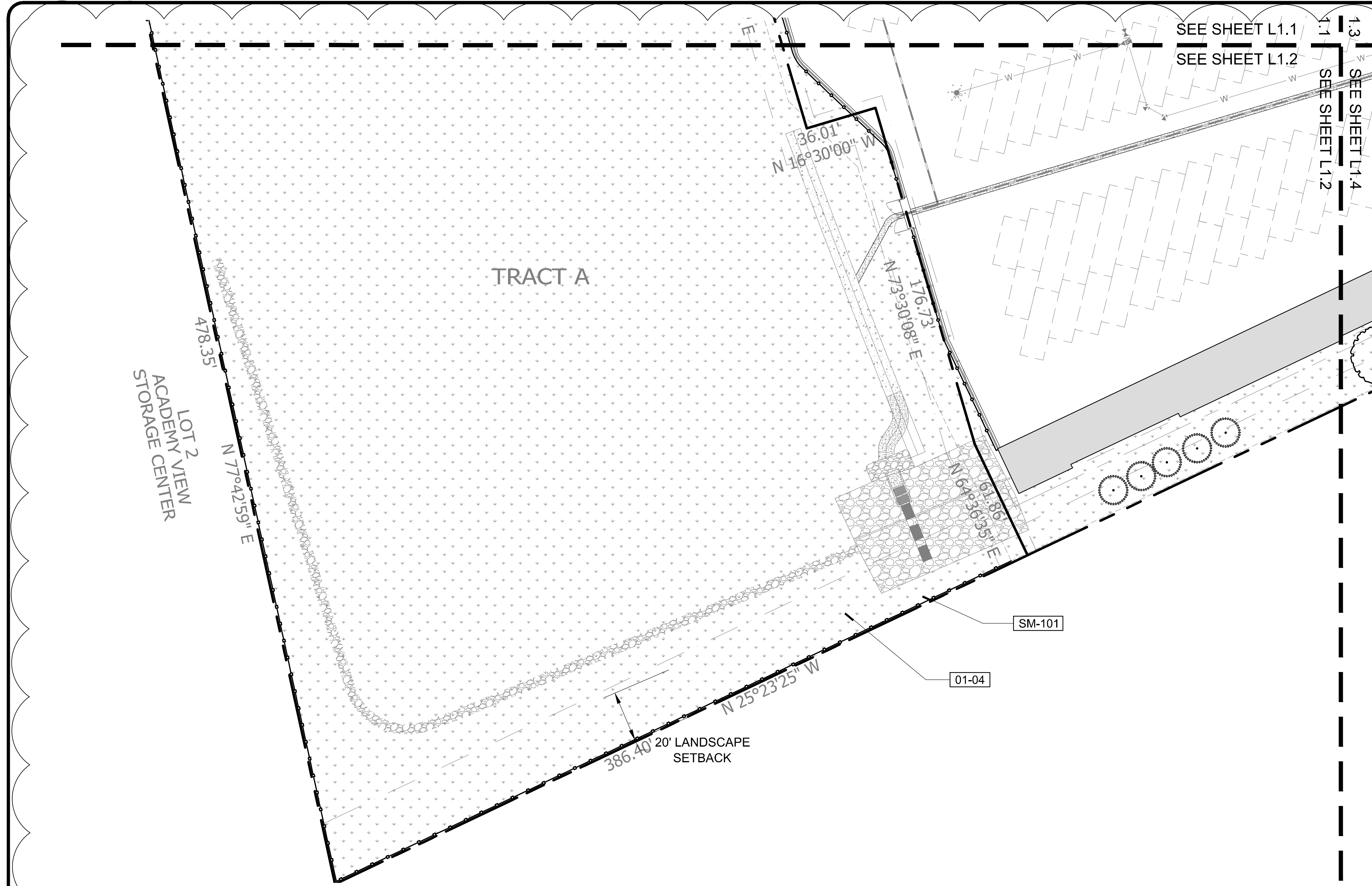
REVISIONS:

1	12-26-18	NEW PLAN
---	----------	----------

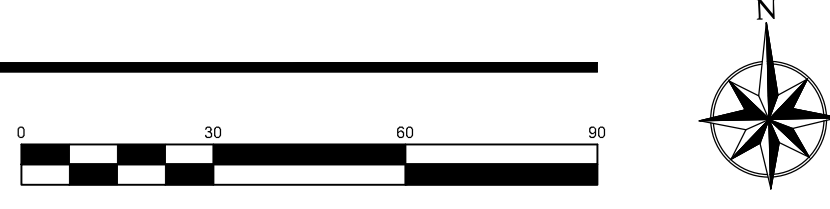
NDS
NATURAL DESIGN SOLUTIONS
Landscape Architecture
Land Planning - Irrigation Design
5539 10th Drive, Longmont, CO 80503
(303) 443-0588 | nds@ndesolutions.com

GLEN EAGLE STORAGE
NORTHGATE, COLORADO SPRINGS, CO
FINAL LANDSCAPE PLAN

PROJ. NO.:	
DATE:	12.26.18
SCALE:	See Sheet
DRAWN:	JRO
CHKD BY:	NAM
SHEET	L11



LANDSCAPE PLAN ENLARGEMENT
SCALE: 1" = 30'



PLAN NOTES:

- NO SUBSTITUTIONS WITHOUT PREVIOUS APPROVAL OF LANDSCAPE ARCHITECT. UNAPPROVED DEVIATIONS FROM THIS PLAN WILL BE RECTIFIED AT CONTRACTORS EXPENSE.
- CONTRACTOR TO PROVIDE ANALYSIS OF ANY AMENDMENTS PROPOSED FOR PLANTING AREAS PRIOR TO INSTALLATION OF SUCH MATERIALS.
- NO FABRIC UNDER WOOD MULCH IN ANY AREAS. ALL PLANTS IN ROCK MULCH AREAS TO RECEIVE SHREDDED CEDAR MULCH RINGS EQUAL TO THE ROOTBALL OF THE PLANT. MASSING SHALL HAVE CONTINUOUS SHREDDED MULCH BANDS. SEE DETAILS SHEET L2.0.
- DRIPLINE TO BE PLACED OVER WEED BARRIER FABRIC AND STAKED ON TOP OF WEED BARRIER.
- WEED BARRIER CUTOUTS FOR PLANTS IN ROCK AREAS SHALL ACCOUNT FOR MATURE SIZE OF PLANTS, AND EQUAL AT LEAST THE DIAMETER OF THE ROOTBALL. SEE DETAILS SHEET L2.0
- ALL EMITTERS PER IRRIGATION PLAN.
- ALL EMITTERS TO BE PLACED AT THE APPROPRIATE LOCATIONS. ALL EMITTERS TO USE MICRO TUBING, STAKES, AND BUG CAPS.
- SEE LANDSCAPE DETAILS SHEET FOR ADDITIONAL NOTES AND DETAILS.
- RETAIN 10% OF ALL PLANT TAGS PER SPECIES FOR DURATION OF WARRANTY PERIOD.

Native Lawn Mix (90%) Buffalograss (10%) Blue Grama Seed @ 2-3 lb / 1000 sf	SEED MAINTENANCE: MOW NATIVE LAWN MIX ABOUT 1/2 THE AMOUNT AS SODDED TURFGRASS OR AS NEEDED. HAND PULL WEED OR SPOT WEED USING A BROADLEAF APPLICATION DURING FIRST 3 GROWING SEASONS.	DISTURBED AREAS TO BE RESEEDDED WITH NATIVE LAWN MIX UNLESS OTHERWISE NOTED. RE: CIVIL PLANS
---	--	--

PLANT LEGEND

QTY FOR REFERENCE ONLY. VERIFY ALL COUNTS PER PLAN.

TREES	CODE	BOTANICAL NAME / COMMON NAME
	AG	ACER GRANDIDENTATUM / BIGTOOTH MAPLE
	CS	CATALPA SPECIOSA / NORTHERN CATALPA
	CO	CELTIS OCCIDENTALIS / COMMON HACKBERRY
	GTS	GLEDITSIA TRIACANTHOS INERMIS 'SHADEMASTER' TM / SHADEMASTER LOCUST
	PE	PINUS EDULIS / PINON PINE
	PP	PINUS PONDEROSA / PONDEROSA PINE
	QB	QUERCUS BICOLOR / SWAMP WHITE OAK
SHRUBS	CODE	BOTANICAL NAME / COMMON NAME
	AC	ARCTOSTAPHYLOS X COLORADOENSIS 'CHIEFTAIN' / MANZANITA
	CMF	CHAMAEBATIARIA MILLEFOLIUM 'FERNBUSH' / FERNBUSH
	ES	ERICAMERIA NAUSEOSA SPECIOSA / DWARF BLUE RABBITBRUSH
	FM	FORESTIERA NEOMEXICANA / NEW MEXICAN PRIVET
	JS	JUNIPERUS SABINA 'BROADMOOR' / BROADMOOR JUNIPER
	JMG	JUNIPERUS SCOPULORUM 'MOONGLOW' / UPRIGHT JUNIPER
	MC	MAHONIA AQUIFOLIUM / OREGON GRAPE
	PAL	PEROVSKIA ATRIPLICIFOLIA 'LITTLE SPIRE' / DWARF RUSSIAN SAGE
	POD	PHYSOCARPUS OPULIFOLIUS 'DIABLO' / DIABLO NINEBARK
	POL	PHYSOCARPUS OPULIFOLIUS 'LITTLE DEVIL' / DWARF PURPLE NINEBARK
	PF	POTENTILLA FRUTICOSA 'GOLDFINGER' / GOLDFINGER POTENTILLA
	PBP	PRUNUS BESSEYI 'PAWNEE BUTTES' / SAND CHERRY
	RG	RHUS AROMATICA 'GRO-LOW' / GRO-LOW FRAGRANT SUMAC
GRASSES	CODE	BOTANICAL NAME / COMMON NAME
	BB	BOUTELOUA GRACILIS 'BLONDE AMBITION' / BLUE GRAMA
	SW	SPOROBOLUS WRIGHTII / BIG SACATON
GROUND COVERS	CODE	BOTANICAL NAME / COMMON NAME
	NLS	NATIVE LAWN SEED MIX / PAWNEE BUTTES SEED CO NATIVE LAWN MIX
MULCHES	CODE	BOTANICAL NAME / COMMON NAME
	RM	ROCK MULCH / RIVER ROCK 1"-2"
	WM	SHREDDED CEDAR MULCH / WOOD MULCH - 3" MIN DEPTH

REFERENCE NOTES SCHEDULE

SYMBOL	DESCRIPTION	QTY
1	PLACE SHREDDED CEDAR MULCH AROUND BASE OF ALL PERENNIALS AND GRASSES IN LARGE COBBLE AREAS. MASSED PERENNIALS TO RECEIVE LARGE RING AROUND ENTIRE GROUP (TYP). WOOD MULCH NOT REQUIRED AROUND BASE OF PLANTS LOCATED IN PEA GRAVEL.	
2	MINIMUM 3' ROOTBALL OFFSET FROM BUILDING, TYP.	
3	PLACE PLANTS TO PROVIDE MIN. 2' CLEARANCE FROM BACK OF CURB AT MATURE SPREAD.	
SYMBOL	DESCRIPTION	QTY
01-04	SEED ALL DISTURBED AREAS WITH NATIVE LAWN MIX UNLESS OTHERWISE NOTED.	
SYMBOL	DESCRIPTION	QTY
32-01	14 G ROLL TOP STEEL EDGING, STAKED 30" OC MAX.	12 LF
SYMBOL	DESCRIPTION	QTY
SM-101	ALL SEEDDED AREAS TO BE AMENDED AND HYDROSEEDDED. PLACE EROSION CONTROL MAT ON ALL SLOPES EXCEEDING 4:1.	

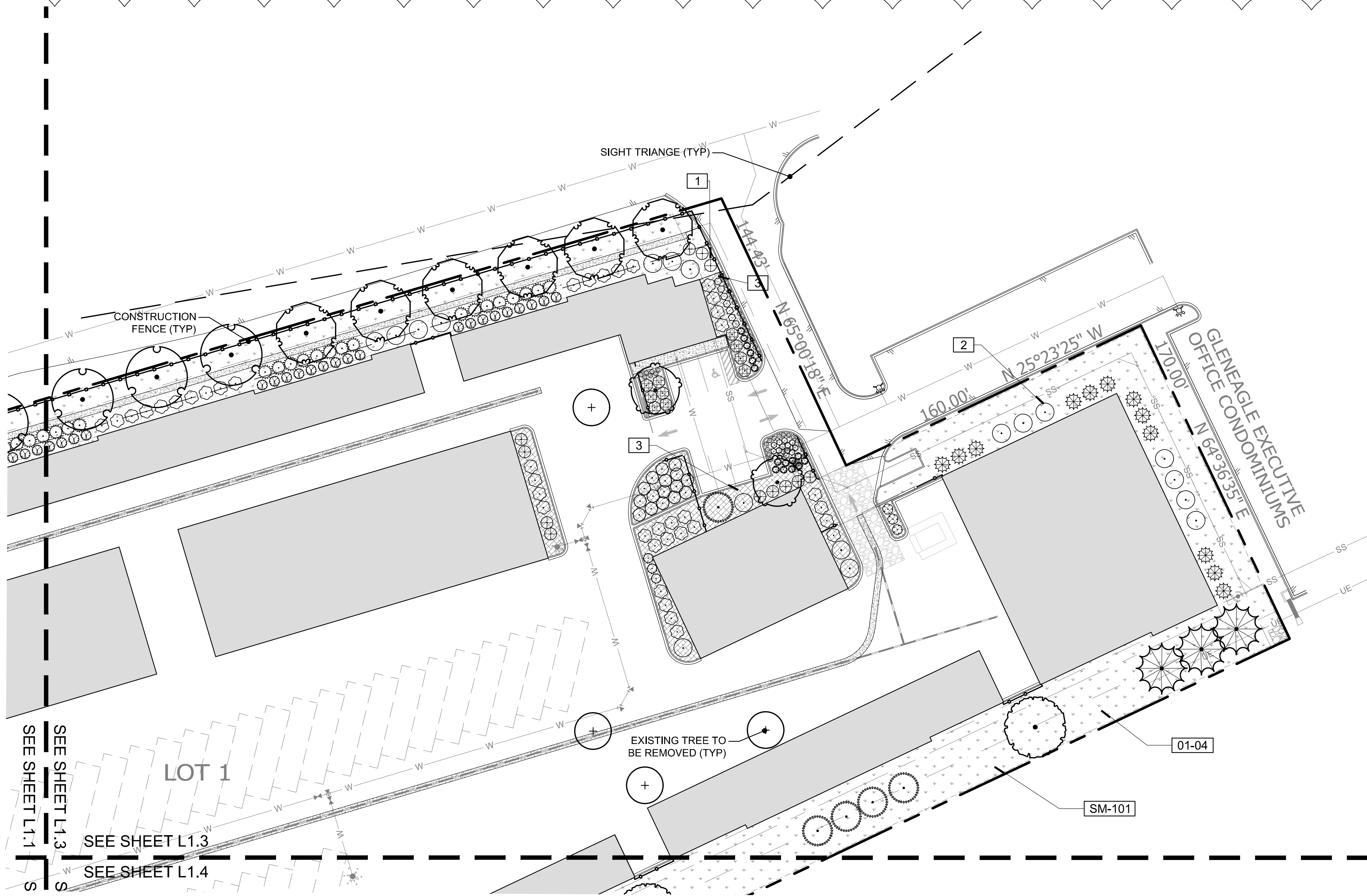
REVISIONS:

12-26-18	NEW PLAN
----------	----------

NDS
NATURAL DESIGN SOLUTIONS
Landscape Architecture
Land Planning - Irrigation Design
3539 64th Drive, Longmont, CO 80503
(303) 443-0588 | nds@naturaldesignsolutions.com

GLEN EAGLE STORAGE
NORTHGATE, COLORADO SPRINGS, CO
FINAL LANDSCAPE PLAN

PROJ. NO.:
DATE: 12.26.18
SCALE: See Sheet
DRAWN: JRO
CHKD BY: NAM
SHEET L12



PLANT LEGEND

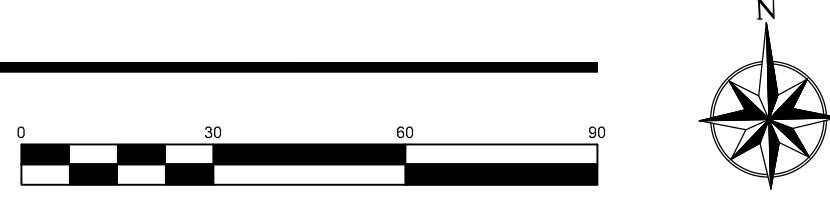
QTY FOR REFERENCE ONLY. VERIFY ALL COUNTS PER PLAN.

TREES	CODE	BOTANICAL NAME / COMMON NAME
	AG	ACER GRANDIDENTATUM / BIGTOOTH MAPLE
	CS	CATALPA SPECIOSA / NORTHERN CATALPA
	CO	CELTIS OCCIDENTALIS / COMMON HACKBERRY
	GTS	GLEDITSIA TRIACANTHOS INERMIS 'SHADEMASTER' TM / SHADEMASTER LOCUST
	PE	PINUS EDULIS / PINON PINE
	PP	PINUS PONDEROSA / PONDEROSA PINE
	QB	QUERCUS BICOLOR / SWAMP WHITE OAK
SHRUBS	CODE	BOTANICAL NAME / COMMON NAME
	AC	ARCTOSTAPHYLOS X COLORADOENSIS 'CHIEFTAIN' / MANZANITA
	CMF	CHAMAEBATIARIA MILLEFOLIUM 'FERNBUSH' / FERNBUSH
	ES	ERICAMERIA NAUSEOSA SPECIOSA / DWARF BLUE RABBITBRUSH
	FM	FORESTIERA NEOMEXICANA / NEW MEXICAN PRIVET
	JS	JUNIPERUS SABINA 'BROADMOOR' / BROADMOOR JUNIPER
	JMG	JUNIPERUS SCOPULORUM 'MOONGLOW' / UPRIGHT JUNIPER
	MC	MAHONIA AQUIFOLIUM / OREGON GRAPE
	PAL	PEROVSKIA ATRIPLICIFOLIA 'LITTLE SPIRE' / DWARF RUSSIAN SAGE
	POD	PHYSOCARPUS OPULIFOLIUS 'DIABLO' / DIABLO NINEBARK
	POL	PHYSOCARPUS OPULIFOLIUS 'LITTLE DEVIL' / DWARF PURPLE NINEBARK
	PF	POTENTILLA FRUTICOSA 'GOLDFINGER' / GOLDFINGER POTENTILLA
	PBP	PRUNUS BESSEYI 'PAWNEE BUTTES' / SAND CHERRY
	RG	RHUS AROMATICA 'GRO-LOW' / GRO-LOW FRAGRANT SUMAC
GRASSES	CODE	BOTANICAL NAME / COMMON NAME
	BB	BOUTELOUA GRACILIS 'BLONDE AMBITION' / BLUE GRAMA
	SW	SPOROBOLUS WRIGHTII / BIG SACATON
GROUND COVERS	CODE	BOTANICAL NAME / COMMON NAME
	NLS	NATIVE LAWN SEED MIX / PAWNEE BUTTES SEED CO NATIVE LAWN MIX
MULCHES	CODE	BOTANICAL NAME / COMMON NAME
	RM	ROCK MULCH / RIVER ROCK 1"-2"
	WM	SHREDDED CEDAR MULCH / WOOD MULCH - 3" MIN DEPTH

REFERENCE NOTES SCHEDULE

SYMBOL	DESCRIPTION	QTY
1	PLACE SHREDDED CEDAR MULCH AROUND BASE OF ALL PERENNIALS AND GRASSES IN LARGE COBBLE AREAS. MASSED PERENNIALS TO RECEIVE LARGE RING AROUND ENTIRE GROUP (TYP). WOOD MULCH NOT REQUIRED AROUND BASE OF PLANTS LOCATED IN PEA GRAVEL.	
2	MINIMUM 3' ROOTBALL OFFSET FROM BUILDING, TYP.	
3	PLACE PLANTS TO PROVIDE MIN. 2' CLEARANCE FROM BACK OF CURB AT MATURE SPREAD.	
SYMBOL	DESCRIPTION	QTY
01-04	SEED ALL DISTURBED AREAS WITH NATIVE LAWN MIX UNLESS OTHERWISE NOTED.	
SYMBOL	DESCRIPTION	QTY
32-01	14 G ROLL TOP STEEL EDGING, STAKED 30" OC MAX.	12 LF
SYMBOL	DESCRIPTION	QTY
SM-101	ALL SEEDED AREAS TO BE AMENDED AND HYDROSEEDED. PLACE EROSION CONTROL MAT ON ALL SLOPES EXCEEDING 4:1.	

LANDSCAPE PLAN ENLARGEMENT
SCALE: 1" = 30'



PLAN NOTES:

- NO SUBSTITUTIONS WITHOUT PREVIOUS APPROVAL OF LANDSCAPE ARCHITECT. UNAPPROVED DEVIATIONS FROM THIS PLAN WILL BE RECTIFIED AT CONTRACTORS EXPENSE.
- CONTRACTOR TO PROVIDE ANALYSIS OF ANY AMENDMENTS PROPOSED FOR PLANTING AREAS PRIOR TO INSTALLATION OF SUCH MATERIALS.
- NO FABRIC UNDER WOOD MULCH IN ANY AREAS. ALL PLANTS IN ROCK MULCH AREAS TO RECEIVE SHREDDED CEDAR MULCH RINGS EQUAL TO THE ROOTBALL OF THE PLANT. MASSING SHALL HAVE CONTINUOUS SHREDDED MULCH BANDS. SEE DETAILS SHEET L2.0.
- DRIPLINE TO BE PLACED OVER WEED BARRIER FABRIC AND STAKED ON TOP OF WEED BARRIER.
- WEED BARRIER CUTOUTS FOR PLANTS IN ROCK AREAS SHALL ACCOUNT FOR MATURE SIZE OF PLANTS, AND EQUAL AT LEAST THE DIAMETER OF THE ROOTBALL. SEE DETAILS SHEET L2.0
- ALL EMITTERS PER IRRIGATION PLAN.
- ALL EMITTERS TO BE PLACED AT THE APPROPRIATE LOCATIONS. ALL EMITTERS TO USE MICRO TUBING, STAKES, AND BUG CAPS.
- SEE LANDSCAPE DETAILS SHEET FOR ADDITIONAL NOTES AND DETAILS.
- RETAIN 10% OF ALL PLANT TAGS PER SPECIES FOR DURATION OF WARRANTY PERIOD.

Native Lawn Mix (90%) Buffalograss (10%) Blue Grama Seed @ 2-3 lb / 1000 sf	SEED MAINTENANCE: MOW NATIVE LAWN MIX ABOUT 1/2 THE AMOUNT AS SODDED TURFGRASS OR AS NEEDED. HAND PULL WEED OR SPOT WEED USING A BROADLEAF APPLICATION DURING FIRST 3 GROWING SEASONS.	DISTURBED AREAS TO BE RESEDED WITH NATIVE LAWN MIX UNLESS OTHERWISE NOTED. RE: CIVIL PLANS
---	--	--

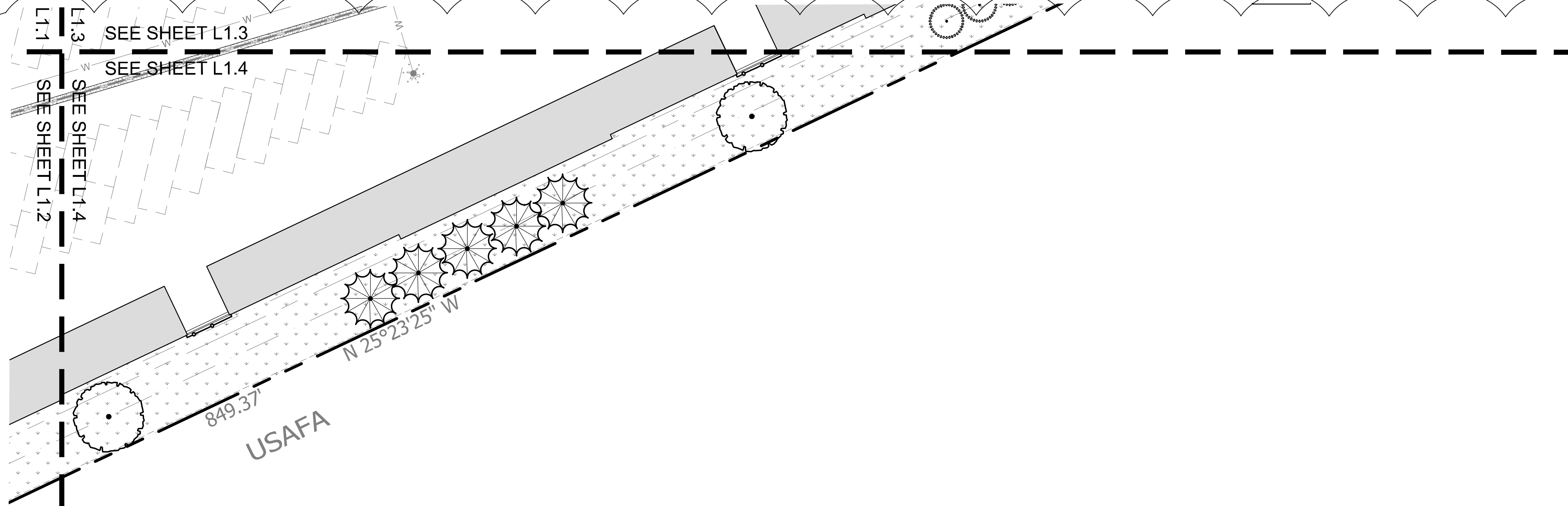
REVISIONS:

12-26-18	NEW PLAN
----------	----------

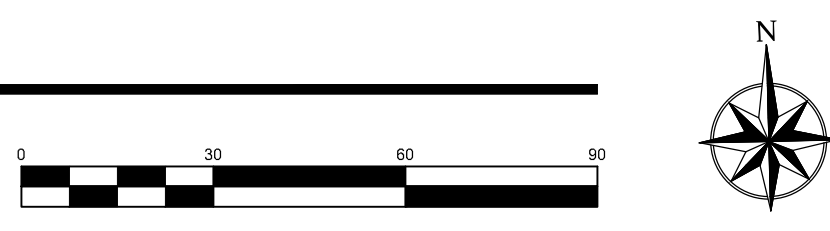
NDS
NATURAL DESIGN SOLUTIONS
Landscape Architecture
Land Planning - Irrigation Design
3539 6th Drive, Longmont, CO 80503
(303) 443-0588 | nds@ndesignsolutions.com

GLEN EAGLE STORAGE
NORTHGATE, COLORADO SPRINGS, CO
FINAL LANDSCAPE PLAN

PROJ. NO.:	
DATE:	12.26.18
SCALE:	See Sheet
DRAWN:	JRO
CHKD BY:	NAM
SHEET	L13



LANDSCAPE PLAN ENLARGEMENT
SCALE: 1" = 30'



PLAN NOTES:

- NO SUBSTITUTIONS WITHOUT PREVIOUS APPROVAL OF LANDSCAPE ARCHITECT. UNAPPROVED DEVIATIONS FROM THIS PLAN WILL BE RECTIFIED AT CONTRACTORS EXPENSE.
- CONTRACTOR TO PROVIDE ANALYSIS OF ANY AMENDMENTS PROPOSED FOR PLANTING AREAS PRIOR TO INSTALLATION OF SUCH MATERIALS.
- NO FABRIC UNDER WOOD MULCH IN ANY AREAS. ALL PLANTS IN ROCK MULCH AREAS TO RECEIVE SHREDDED CEDAR MULCH RINGS EQUAL TO THE ROOTBALL OF THE PLANT. MASSING SHALL HAVE CONTINUOUS SHREDDED MULCH BANDS. SEE DETAILS SHEET L2.0.
- DRIPLINE TO BE PLACED OVER WEED BARRIER FABRIC AND STAKED ON TOP OF WEED BARRIER.
- WEED BARRIER CUTOUTS FOR PLANTS IN ROCK AREAS SHALL ACCOUNT FOR MATURE SIZE OF PLANTS, AND EQUAL AT LEAST THE DIAMETER OF THE ROOTBALL. SEE DETAILS SHEET L2.0
- ALL EMITTERS PER IRRIGATION PLAN.
- ALL EMITTERS TO BE PLACED AT THE APPROPRIATE LOCATIONS. ALL EMITTERS TO USE MICRO TUBING, STAKES, AND BUG CAPS.
- SEE LANDSCAPE DETAILS SHEET FOR ADDITIONAL NOTES AND DETAILS.
- RETAIN 10% OF ALL PLANT TAGS PER SPECIES FOR DURATION OF WARRANTY PERIOD.

Native Lawn Mix (90%) Buffalograss (10%) Blue Grama Seed @ 2-3 lb / 1000 sf	SEED MAINTENANCE: MOW NATIVE LAWN MIX ABOUT 1/2 THE AMOUNT AS SODDED TURFGRASS OR AS NEEDED. HAND PULL WEED OR SPOT WEED USING A BROADLEAF APPLICATION DURING FIRST 3 GROWING SEASONS.	DISTURBED AREAS TO BE RESEEDDED WITH NATIVE LAWN MIX UNLESS OTHERWISE NOTED. RE: CIVIL PLANS
---	--	--

PLANT LEGEND

QTY FOR REFERENCE ONLY. VERIFY ALL COUNTS PER PLAN.

TREES	CODE	BOTANICAL NAME / COMMON NAME
	AG	ACER GRANDIDENTATUM / BIGTOOTH MAPLE
	CS	CATALPA SPECIOSA / NORTHERN CATALPA
	CO	CELTIS OCCIDENTALIS / COMMON HACKBERRY
	GTS	GLEDITSIA TRIACANTHOS INERMIS 'SHADEMASTER' TM / SHADEMASTER LOCUST
	PE	PINUS EDULIS / PINON PINE
	PP	PINUS PONDEROSA / PONDEROSA PINE
	QB	QUERCUS BICOLOR / SWAMP WHITE OAK
SHRUBS	CODE	BOTANICAL NAME / COMMON NAME
	AC	ARCTOSTAPHYLOS X COLORADOENSIS 'CHIEFTAIN' / MANZANITA
	CMF	CHAMAEBATIARIA MILLEFOLIUM 'FERNBUSH' / FERNBUSH
	ES	ERICAMERIA NAUSEOSA SPECIOSA / DWARF BLUE RABBITBRUSH
	FM	FORESTIERA NEOMEXICANA / NEW MEXICAN PRIVET
	JS	JUNIPERUS SABINA 'BROADMOOR' / BROADMOOR JUNIPER
	JMG	JUNIPERUS SCOPULORUM 'MOONGLOW' / UPRIGHT JUNIPER
	MC	MAHONIA AQUIFOLIUM / OREGON GRAPE
	PAL	PEROVSKIA ATRIPLICIFOLIA 'LITTLE SPIRE' / DWARF RUSSIAN SAGE
	POD	PHYSOCARPUS OPULIFOLIUS 'DIABLO' / DIABLO NINEBARK
	POL	PHYSOCARPUS OPULIFOLIUS 'LITTLE DEVIL' / DWARF PURPLE NINEBARK
	PF	POTENTILLA FRUTICOSA 'GOLDFINGER' / GOLDFINGER POTENTILLA
	PBP	PRUNUS BESSEYI 'PAWNEE BUTTES' / SAND CHERRY
	RG	RHUS AROMATICA 'GRO-LOW' / GRO-LOW FRAGRANT SUMAC
GRASSES	CODE	BOTANICAL NAME / COMMON NAME
	BB	BOUTELOUA GRACILIS 'BLONDE AMBITION' / BLUE GRAMA
	SW	SPOROBOLUS WRIGHTII / BIG SACATON
GROUND COVERS	CODE	BOTANICAL NAME / COMMON NAME
	NLS	NATIVE LAWN SEED MIX / PAWNEE BUTTES SEED CO NATIVE LAWN MIX
MULCHES	CODE	BOTANICAL NAME / COMMON NAME
	RM	ROCK MULCH / RIVER ROCK 1"-2"
	WM	SHREDDED CEDAR MULCH / WOOD MULCH - 3" MIN DEPTH

REFERENCE NOTES SCHEDULE

SYMBOL	DESCRIPTION	QTY
1	PLACE SHREDDED CEDAR MULCH AROUND BASE OF ALL PERENNIALS AND GRASSES IN LARGE COBBLE AREAS. MASSED PERENNIALS TO RECEIVE LARGE RING AROUND ENTIRE GROUP (TYP). WOOD MULCH NOT REQUIRED AROUND BASE OF PLANTS LOCATED IN PEA GRAVEL.	
2	MINIMUM 3' ROOTBALL OFFSET FROM BUILDING, TYP.	
3	PLACE PLANTS TO PROVIDE MIN. 2' CLEARANCE FROM BACK OF CURB AT MATURE SPREAD.	
SYMBOL	DESCRIPTION	QTY
01-04	SEED ALL DISTURBED AREAS WITH NATIVE LAWN MIX UNLESS OTHERWISE NOTED.	
32 LANDSCAPE IMPROVEMENTS		
SYMBOL	DESCRIPTION	QTY
32-01	14 G ROLL TOP STEEL EDGING, STAKED 30" OC MAX.	12 LF
SYMBOL	DESCRIPTION	QTY
SM-101	ALL SEEDED AREAS TO BE AMENDED AND HYDROSEEDDED. PLACE EROSION CONTROL MAT ON ALL SLOPES EXCEEDING 4:1.	

REVISIONS:

1	12-26-18	NEW PLAN
---	----------	----------

NDS
NATURAL DESIGN SOLUTIONS
Landscape Architecture
Land Planning - Irrigation Design
5539 9th Drive, Longmont, CO 80503
(303) 443-0588 | nrd@ndesignsolutions.com

GLEN EAGLE STORAGE
NORTHGATE, COLORADO SPRINGS, CO
FINAL LANDSCAPE PLAN

PROJ. NO.:	
DATE:	12.26.18
SCALE:	See Sheet
DRAWN:	JRO
CHKD BY:	NAM
SHEET	L14

GENERAL NOTES

(Note: All references to "Contractor" are specific to "Landscape Contractor" unless notified as "General or other type of Contractor")

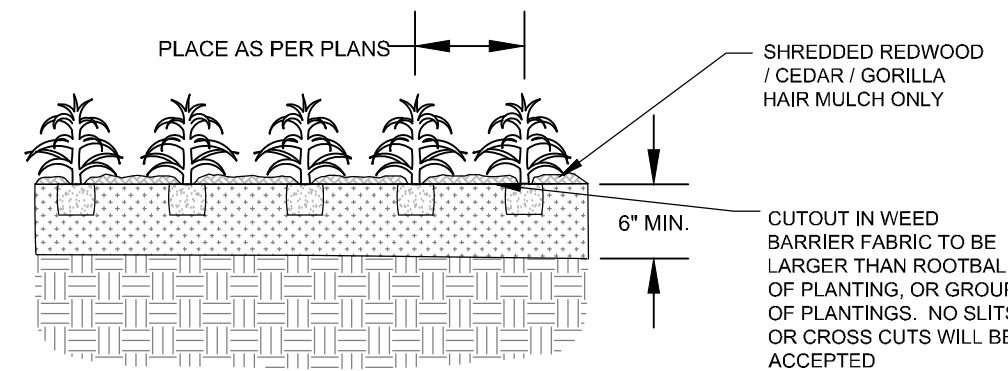
- CONTRACTOR IS RESPONSIBLE FOR VERIFYING QUANTITIES OF MATERIALS NEEDED TO COMPLETE THIS PLAN IN THE FIELD. NOTIFY LANDSCAPE ARCHITECT OF ANY DISCREPANCIES BETWEEN THE DRAWINGS AND CONDITIONS IN THE FIELD. SUBSTITUTIONS OF PLANT MATERIAL ARE NOT ALLOWED WITHOUT APPROVAL FROM LANDSCAPE ARCHITECT GIVEN PRIOR TO INSTALLATION. GRAPHIC QTY'S, PREVAIL OVER WRITTEN QTY'S. PRIOR TO COMMENCEMENT OF WORK THE LANDSCAPE CONTRACTOR SHALL CONTACT OWNERS REPRESENTATIVE FOR SPECIFIC INSTRUCTIONS RELEVANT TO THE SEQUENCING AND SCOPE OF WORK.
- CONTRACTOR IS RESPONSIBLE FOR INSTALLING ALL LANDSCAPE SHOWN ON THIS PLAN. ANY DEFICIENCIES OR DEVIATIONS FROM THIS PLAN ARE TO BE APPROVED BY OWNER'S REPRESENTATIVE OR LANDSCAPE ARCHITECT. ANY CHANGES FROM THE APPROVED PLANS MAY REQUIRE APPROVAL FROM THE CITY OR COUNTY PLANNING DEPARTMENTS.
- LANDSCAPE CONTRACTOR TO PROVIDE ALL LABOR AND MATERIALS NECESSARY TO FURNISH SCOPE OF WORK AS SHOWN PER PLAN.
- EXISTING TOPSOIL IS TO BE STOCKPILED AND USED TO ESTABLISH FINAL GRADES WITHIN LANDSCAPE AREAS. ALL STOCKPILED SOIL MUST BE CLEAR OF WEEDS, ROCKS AND DEBRIS BEFORE REUSE. ALL BERMED PLANTING BEDS TO BE CREATED WITH IMPORTED TOPSOIL.
- GENERAL CONTRACTOR TO RE-SPREAD STOCKPILED SOIL AND ESTABLISH ROUGH GRADE CONDITIONS TO THE FOLLOWING SPECIFICATIONS:
 - 1" BELOW CURB FOR ALL SEEDED AREAS.
 - 2.5" BELOW CURB FOR ALL SODDED AREAS.
 - 4" BELOW CURB FOR ALL PLANTING, ROCK AND MULCH BEDS. CONTRACTOR TO TILL PARKING LOT ISLANDS TO A DEPTH OF 30".
- AMEND ALL PLANTING BEDS WITH CLASS 1 COMPOST. APPLY AT RATE OF 3 CYDS. PER 1000 SQUARE FEET TO ALL PLANTING BEDS AND MANICURED LAWN AREAS, AND 2 CYDS. PER 1000 SQUARE FEET FOR SEEDED AREAS, TILL, MIXING THOROUGHLY, INTO THE UPPER 8" OF SOIL.
- FINE GRADE TO BE ESTABLISHED BY LANDSCAPE CONTRACTOR. FINE GRADE SHALL BE FREE OF ROCKS AND DEBRIS. FINE GRADE IN SEED AREAS SHALL BE FREE FROM ROCKS AND DEBRIS 1/2" AND GREATER. FINE GRADE IN SODDED AREAS SHALL BE FREE FROM ROCKS AND DEBRIS 1/2" AND GREATER. CONTRACTOR TO REPORT ANY POOR DRAINAGE CONDITIONS PRIOR TO CONSTRUCTION.
- CONTRACTOR IS TO PROVIDE VERIFICATION THAT ALL SOD IS OF THE SPECIES SHOWN ON THIS PLAN. NO SUBSTITUTIONS WILL BE ALLOWED. SOD TO BE LAID WITH TIGHT STAGGERED EDGES AND BE ROLLED AFTER INSTALLATION. SEEDED AREAS CANNOT BE SUBSTITUTED WITH SOD.
- MULCHS: ALL PLANTING BEDS THAT CALL FOR WOOD/ORGANIC MULCH TO RECEIVE 4" ORGANIC SHREDDED BARK MULCH. SHREDDED MULCH IS TO BE OF FIBROUS MATERIAL, NOT CHIPS OR CHUNKS. NO FABRIC IS TO BE PLACED UNDER WOOD/ORGANIC MULCH. TREES IN TURF AND NATIVE GRASS AREAS TO RECEIVE 4" DIAMETER OF WOOD MULCH, 3" DEPTH. SHRUBS AND GROUNDCOVERS IN NATIVE GRASS AREAS TO RECEIVE 3" DIAMETER OF WOOD MULCH, 3" DEEP. ALL MULCHED BEDS ARE TO BE SPRAYED WITH WATER AFTER INSTALLATION TO HELP MULCH TO MAT DOWN.
- TREES IN COBBLE/ROCK MULCH TO RECEIVE 4" DIAMETER OF WOOD MULCH, 3" DEEP. SHRUBS AND GROUNDCOVERS IN COBBLE/ROCK MULCH AREAS TO RECEIVE 3" DIAMETER OF WOOD MULCH, 3" DEEP. NO FABRIC UNDERLAYMENT IN WOOD MULCH AREAS.

ALL PLANTING BEDS THAT CALL FOR COBBLE/ROCK MULCH TO RECEIVE MIN. 3" DEPTH OF MULCH USE PERMEABLE FABRIC UNDERLAYMENT FOR ALL COBBLE/AGGREGATE AREAS WITH SLOPES 3:1 AND LESS. USE QUICK RELEASE ORGANIC PRE-EMERGENT HERBICIDE FOR ALL MULCHED AND PERENNIAL/PLANTING BEDS (AND FOR COBBLE/AGGREGATE AREAS WITH SLOPES EXCEEDING 3:1 GRADE).

- SEED MIX INSTALLATION: CONTRACTOR TO DRILL SEED WITH BRILLION TYPE APPLICATOR AND APPLY 'SOIL GUARD' BONDED FIBER MATRIX (BFM), WHERE INDICATED PER PLAN AND SCHEDULES. APPLY SEED IN TWO DIRECTIONS (PERPENDICULAR OF THE OTHER) ADD SOIL GUARD BFM FOR DRILL SEEDING WHERE NOTED PER PLAN AND ON ALL SLOPES 5:1 TO 3:1. FOR AREAS WITH 3:1 SLOPES OR GREATER CONTRACTOR TO USE SOIL GUARD APPLICATION ONLY (IN LIEU OF HYDROMULCH). CONTRACTOR TO SPOT SEED NON-GERMINATING AREAS (3) MONTHS AFTER INITIAL SEED APPLICATION. CONTRACTOR TO RE-SEED ALL BARE AREAS (6"x6") AND GREATER AFTER (6) MONTHS FROM SEED GERMINATION OR AT THE BEGINNING OF THE FOLLOWING GROWING SEASON. PRIOR TO THE 11-MONTH WARRANTY INSPECTION RE-APPLY SOIL GUARD AND SEED MIX TO ALL BARE AREAS (6"x6" OR GREATER) AND TO ALL BARE AREAS (4"x4" OR GREATER) ON ALL SLOPES 3:1 AND GREATER.
- REMOVED DEAD TWIGS AND BRANCHES FROM ALL NEW AND EXISTING PLANT MATERIAL IN A MANNER THAT DOES NOT CHANGE THE NATURAL HABIT OF THE PLANT MATERIAL. SCARS OF 1" OR MORE SHALL BE PAINTED WITH ORGANIC TREE PAINT. CENTRAL LEADERS SHALL NOT BE REMOVED AT ANY TIME. NEWLY PLANTED TREES WITHOUT CENTRAL LEADERS WILL BE REJECTED.
- CONTRACTOR TO APPLY FERTILIZER IN SPRING & LATE SEPTEMBER. WATER THOROUGHLY AFTER APPLICATION OF FERTILIZERS.
 - ALL SEEDED AND SODDED AREAS TO HAVE RECOMMEND FERTILIZER APPLICATIONS ADDED 2 TO 3 WEEKS AFTER SEEDLING EMERGENCE. AND ONCE IN MID TO LATE JUNE, IN EARLY TO MID AUGUST, AND ONCE IN LATE SEPTEMBER. SEEDED AND SODDED AREAS ARE ALSO TO RECEIVE 5 LB. OF ELEMENTAL SULFUR (OR EQUIVALENT MATERIAL) PER 1,000 S.F. APPLIED IN LATE SEPTEMBER. WATER THOROUGHLY AFTER APPLICATION OF FERTILIZERS.
- ALL PLANT MATERIALS AND UTILITIES ARE SHOWN AT AN APPROXIMATE LOCATIONS. THE CONTRACTOR MAY NEED TO ADJUST LOCATIONS OF PLANT MATERIAL TO ADHERE TO SPECIFIC ON-SITE CONDITIONS AND CODE REQUIREMENTS. ALL TREES AND SHRUBS TO BE PLACED AT 2' MINIMUM BACK OF CURB. CONTRACTOR TO CALL FOR UTILITY LOCATES BEFORE PLANTING (TYP.) 1-800-922-1987, OR CALL 811 BEFORE YOU DIG!
- STEEL EDGING TO BE USED TO SEPARATE ALL TURF AND/OR SEEDED AREAS FROM PLANTING BEDS. USE PERFORATED EDGING SEGMENTS TO OBTAIN POSITIVE DRAINAGE FOR ALL DRAINAGE SWALES OR AREAS OF STANDING WATER.
- CONTRACTOR TO PROVIDE COBBLE & UNDERLAYMENT FOR BUILDING DRAINS AND SWALES THROUGH LANDSCAPED AREAS.
- ALL REQUIRED LANDSCAPING TO BE INSTALLED PRIOR TO ISSUANCE OF THE CERTIFICATE OF OCCUPANCY.
- ALL NURSERY STOCK TO CONFORM TO THE AMERICAN STANDARD FOR NURSERY STOCK (ANSI z60.1) AND THE COLORADO NURSERY ACT.
- CONTRACTOR IS RESPONSIBLE FOR CONTACTING LANDSCAPE ARCHITECT FOR ALL REQUIRED INSPECTIONS. PROVIDE AT LEAST 48 HOURS NOTICE TO SCHEDULE AN INSPECTION. REQUIRED INSPECTIONS INCLUDE A LANDSCAPE LAYOUT AND PLANT MATERIAL VERIFICATION AND PLACEMENT INSPECTION, IRRIGATION MAIN LINE INSPECTION, LANDSCAPE AND IRRIGATION PUNCH LIST INSPECTION, AND A LANDSCAPE AND IRRIGATION FINAL INSPECTION.
- CONTRACTOR IS TO PROVIDE A ONE YEAR WARRANTY ON ALL PLANT MATERIAL, TURF, IRRIGATION COMPONENTS, AND WORKMANSHIP. REPLACEMENT PLANT MATERIALS SHALL BE OF THE SAME SPECIES AND SIZE AS THE DECAYED OR DEAD PLANT MATERIAL. WARRANTY IS VOID IF PLANT MATERIAL ARE UNDER OR OVER-WATERED/FERTILIZED, DAMAGED BY VANDALISM OR NEGLECTED BY OWNER AFTER FINAL MAINTENANCE PERIOD AND FINAL ACCEPTANCE IS PROVIDED.
 - REMOVE ALL TREE STAKING MATERIALS AT END OF WARRANTY, PRIOR TO FINAL ACCEPTANCE
- MAINTENANCE: THE OWNER OF THIS PROPERTY AND ANY FUTURE OWNERS SHALL BE RESPONSIBLE FOR THE PROPER LANDSCAPE AND IRRIGATION MAINTENANCE OF THIS SITE AND ANY RIGHT OF WAY AREAS BETWEEN THE CURB AND PROPERTY LINES OF THIS SITE. MAINTENANCE OF THIS SITE INCLUDES, BUT IS NOT LIMITED TO, IRRIGATION INSPECTIONS AND ADJUSTMENTS, IRRIGATION SYSTEM SHUT DOWN AND START UP, IRRIGATION LEAK REPAIR, LANDSCAPE WEEDING, MOWING, SEEDING, FERTILIZATION, WOOD MULCH AND ROCK COVER REPLACEMENT, PRUNING, AND PLANT MATERIAL REPLACEMENT (INCLUDING ANNUAL BEDS). ALL MAINTENANCE SHOULD BE IN ACCORDANCE WITH STANDARDS SPECIFIED WITHIN THE "ALCC SPECIFICATIONS HANDBOOK" REVISED EDITION- 1996. OWNER SHOULD CONTACT LANDSCAPE CONTRACTOR OR LANDSCAPE ARCHITECT REGARDING ANY QUESTIONS RELATING TO THE LANDSCAPE OR IRRIGATION MAINTENANCE OF THIS SITE.
 - IRRIGATION NOTES
 - ALL TURF AREAS TO BE IRRIGATED WITH AN AUTOMATIC POP-UP SPRINKLER SYSTEM. ALL SHRUBS BEDS TO BE IRRIGATED WITH AUTOMATIC DRIP IRRIGATION SYSTEM. THE IRRIGATION SYSTEM IS TO BE ADJUSTED TO MEET THE NEEDS OF INDIVIDUAL PLANT MATERIAL.
 - IRRIGATION SYSTEM TO BE ADJUSTED AS NEEDED FOR PLANT ESTABLISHMENT FOR A PERIOD OF AT LEAST ONE (1) YEAR.
 - ADJUSTMENTS TO BE MADE AFTER ESTABLISHMENT BASED ON SPECIFIC PLANT REQUIREMENTS. SEE SUGGESTED RUN TIMES PROVIDED WITHIN THESE PLANS.
 - DESIGN OF IRRIGATION SYSTEMS TO MEET OR EXCEED LOCAL REQUIREMENTS AND INDUSTRY STANDARDS. CONSTRUCTION DOCUMENTS SUITABLE FOR DEVELOPMENT COORDINATION TO BE PROVIDED.
 - IRRIGATION SYSTEM TO BE DESIGNED USING APPROPRIATE COMPONENTS FOR PLANT MATERIAL, AND WILL INCLUDE A SMART ET CONTROLLER AND RAIN SENSOR.
 - ALL NATIVE SEED AREAS TO BE PERMANENTLY IRRIGATED.

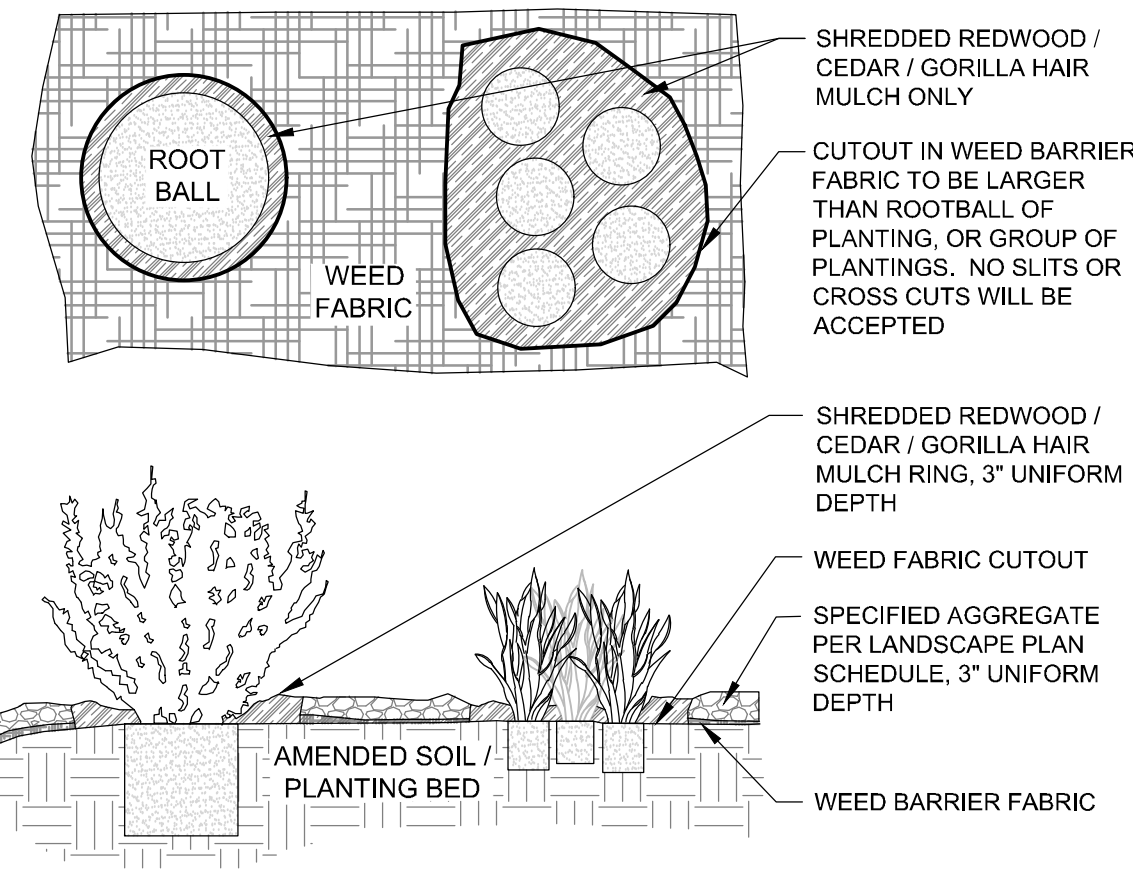
NOTES:

- KEEP PLANTS MOIST AND SHADED UNTIL PLANTING.
- PLANT GROUND COVERS AND PERENNIALS LEVEL AND AT GRADE.
- PRUNE ALL DEAD OR BROKEN PARTS PRIOR TO PLANTING.
- AMENDED BACKFILL SHALL BE 1/3 COMPOST (PREFERABLY CLASSIFIED) AND 2/3 NATIVE AND/OR IMPORTED TOPSOIL.
- ALL PERENNIALS PLANTED IN ROCK MULCH AREAS TO HAVE ORGANIC MULCH RINGS AROUND THE BASE OF THE PLANT.



L2.0 PERENNIAL/GROUNDCOVER PLANTING DETAIL
NOT TO SCALE

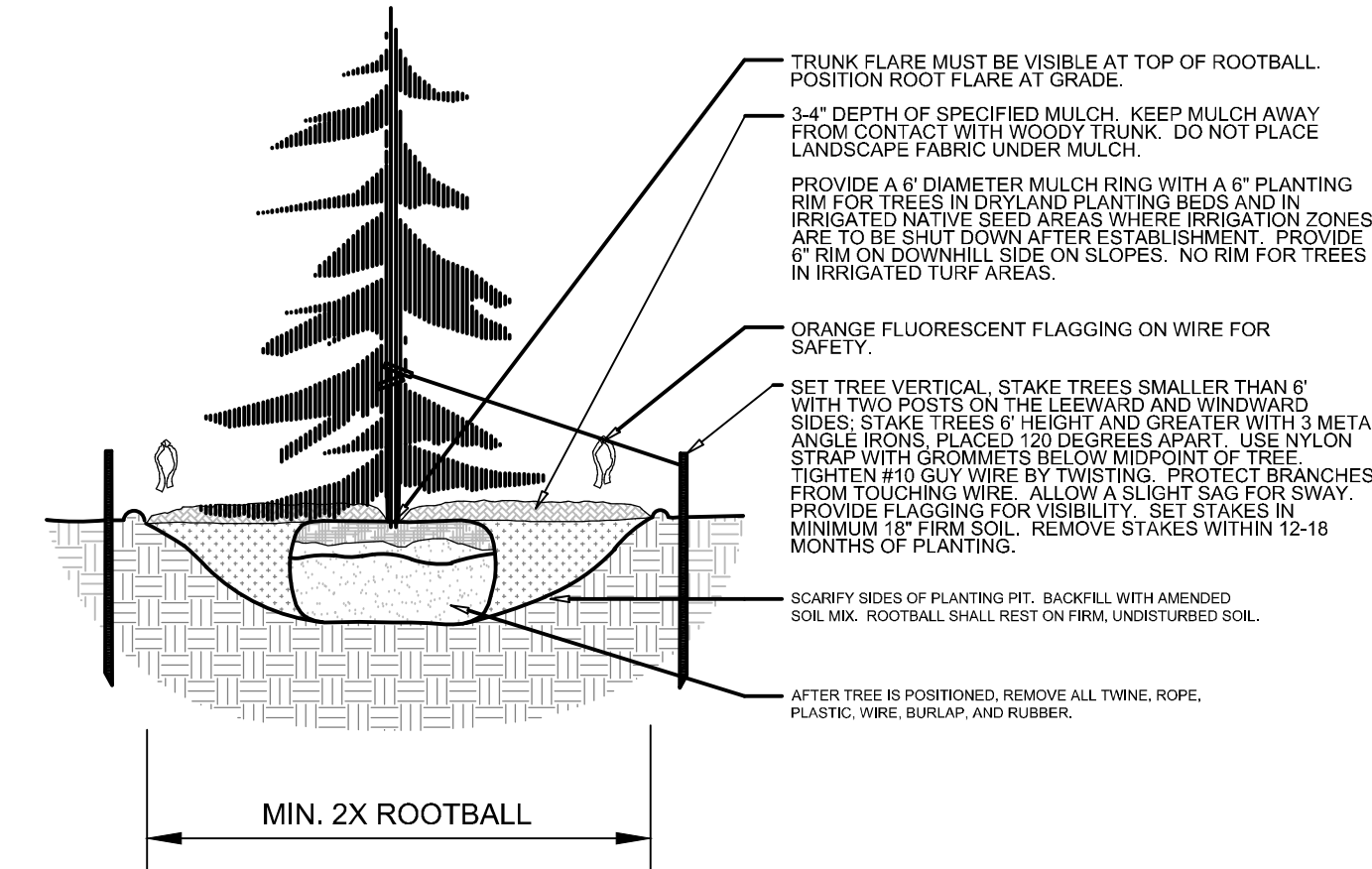
SINGLE PLANTINGS MASSES PLANTINGS



L2.0 FABRIC CUTOUT / WOOD MULCH RING DETAIL
NOT TO SCALE

NOTES:

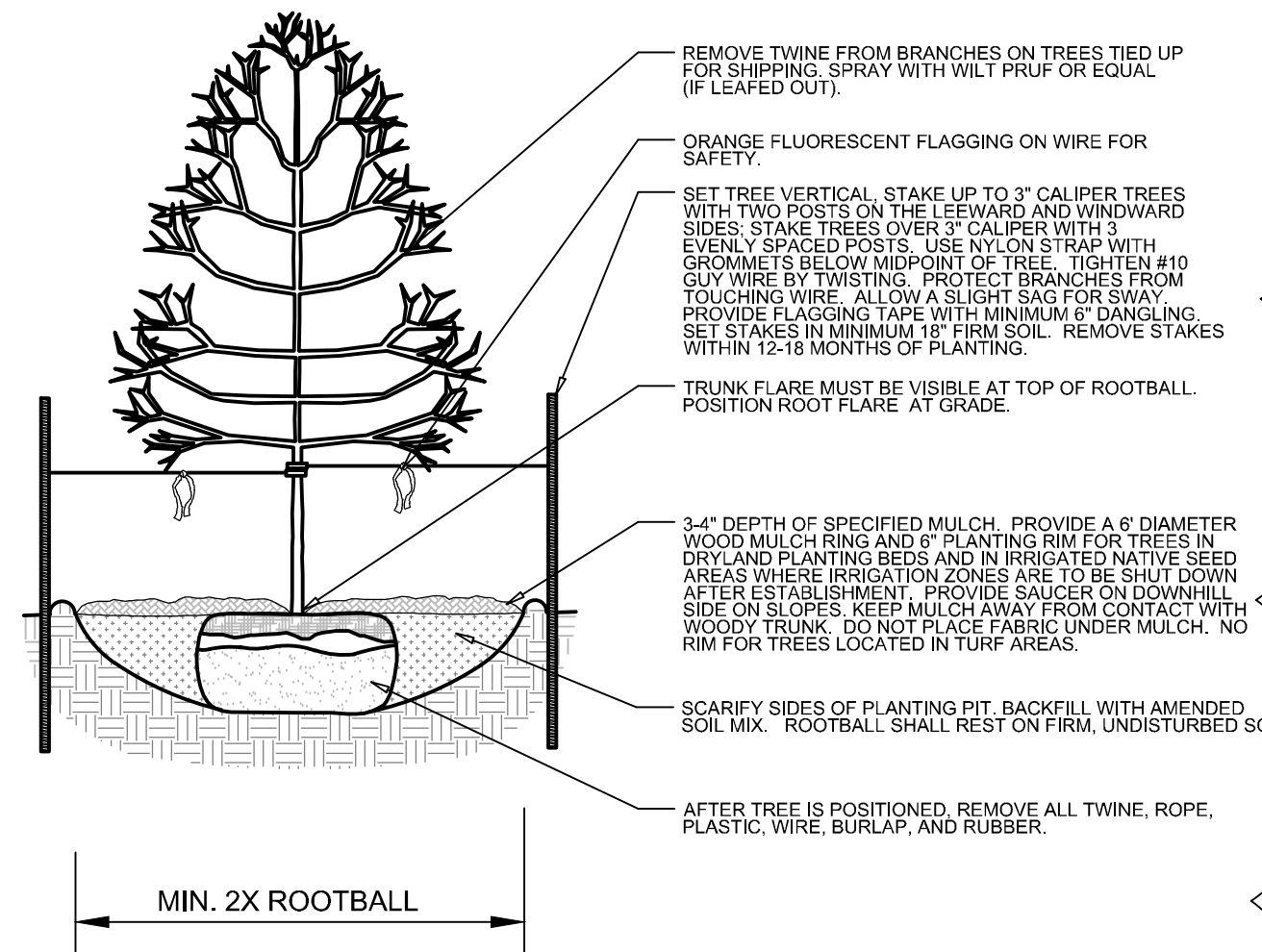
- DO NOT REMOVE OR CUT LEADER.
- PRUNE ONLY DEAD OR BROKEN BRANCHES IMMEDIATELY PRIOR TO PLANTING.
- DO NOT REMOVE ANY DOUBLE LEADER, UNLESS OTHERWISE DIRECTED BY OWNERS REPRESENTATIVE.
- KEEP PLANTS MOIST AND SHADED UNTIL PLANTING.
- AMENDED BACKFILL SHALL BE AS STATED ON THIS SHEET.
- MARK THE NORTH SIDE OF TREE IN THE NURSERY, AND ROTATE TREE TO FACE NORTH AT THE SITE WHENEVER POSSIBLE.
- PINE AND SPRUCE TREES TO BE SPRAYED FOR IPS BARK BEETLE PRIOR TO PLANTING. COORDINATE WITH CITY FORESTRY.
- FOR CURRENT INSECT AND DISEASE RECOMMENDATIONS PRIOR TO PLANTING.
- ALL TREES TO BE DEEP WATERED AT TIME OF PLANTING.



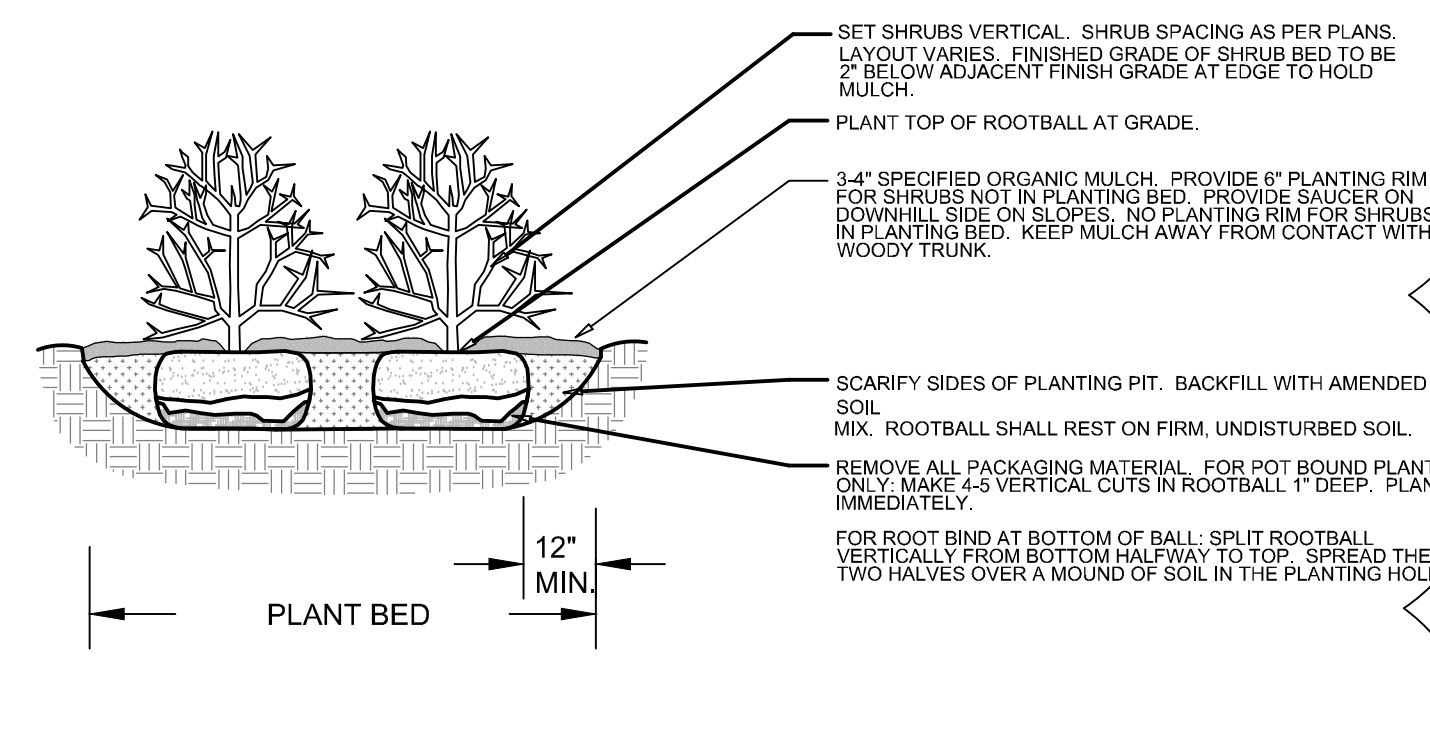
L2.0 EVERGREEN TREE PLANTING DETAIL
NOT TO SCALE

NOTES:

- MARK THE NORTH SIDE OF TREE IN THE NURSERY, AND ROTATE TREE TO FACE NORTH AT THE SITE WHENEVER POSSIBLE.
- AT TIME OF PLANTING, DO NOT REMOVE OR CUT LEADER AND PRUNE ONLY DEAD OR BROKEN BRANCHES, CROSS OVER BRANCHES, AND WEAK OR NARROW CROTCHES. SOME INTERIOR TWIGS AND LATERAL BRANCHES MAY BE PRUNED. HOWEVER, DO NOT REMOVE THE TERMINAL BUDS OF BRANCHES THAT EXTEND TO THE EDGE OF THE CROWN.
- STRUCTURAL PRUNING SHOULD NOT BEGIN UNTIL AFTER ESTABLISHMENT PERIOD, USUALLY TWO GROWING SEASONS.
- KEEP PLANTS MOIST AND SHADED UNTIL PLANTING.
- DO NOT FERTILIZE FOR AT LEAST ONE GROWING SEASON.
- AMENDED BACKFILL SHALL BE AS STATED ON THIS SHEET.
- WRAP TRUNK ON EXPOSED SITES AND SPECIES WITH THIN BARK. USE ELECTRICAL OR DUCT TAPE, NOT TWINE.
- COORDINATE WITH CITY FORESTRY FOR CURRENT INSECT AND DISEASE RECOMMENDATIONS PRIOR TO PLANTING.
- DEEP WATER ALL PLANTS AT TIME OF PLANTING.



L2.0 DECIDUOUS TREE PLANTING DETAIL
SECTION



L2.0 SHRUB PLANTING DETAIL
SECTION

REVISIONS:	12-26-18	NEW PLAN
------------	----------	----------

NDS
NATURAL DESIGN SOLUTIONS
Landscape Architecture & Irrigation Design
3539 Coit Drive, Longmont, CO 80503
(303) 443-0280 | nds@ndesignsolutions.com

GLEN EAGLE STORAGE NORTHGATE, COLORADO SPRINGS, CO

FINAL LANDSCAPE PLAN DETAILS & NOTES

PROJ. NO.:	
DATE:	12.26.18
SCALE:	See Sheet
DRAWN:	JRO
CHKD BY:	NAM
SHEET	L2.0