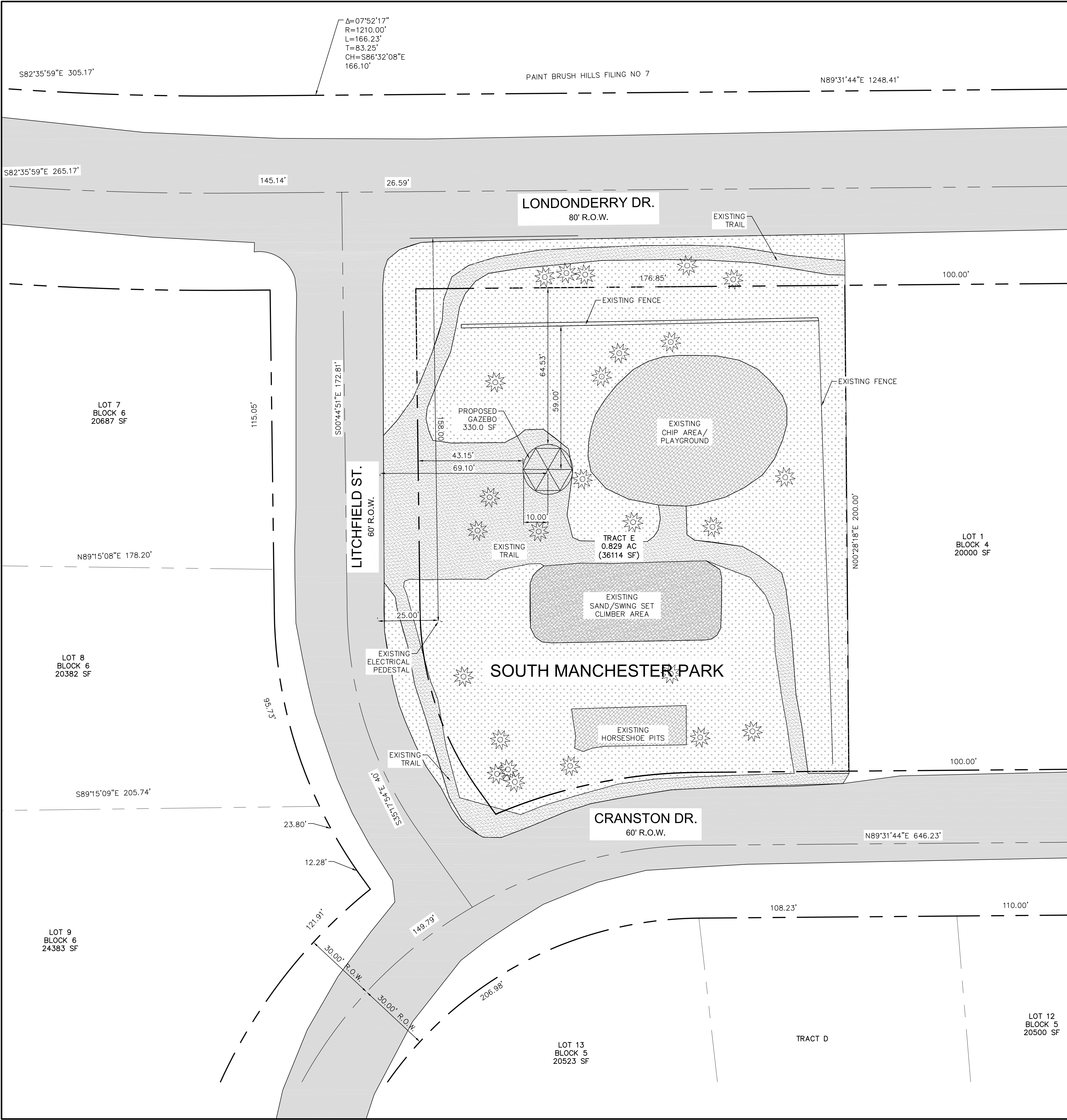


S:\1070.001 Paintbrush Hills\gishills\gazebolandscap plan_park.dwg 5/22/2017 10:19:41 AM, Cheryl, 1:1



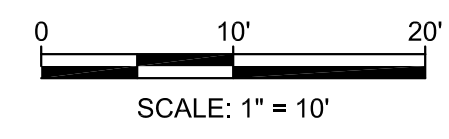
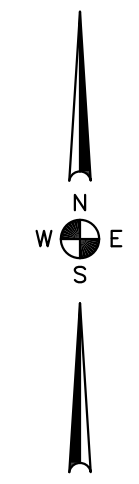
Δ=07°52'17"
R=1210.00'
L=166.23'
T=83.25'
CH=S86°32'08"E
166.10'

LEGEND

- EXISTING CONCRETE
- EXISTING ASPHALT
- EXISTING GRAVEL
- EXISTING FENCE
- EXISTING DECIDUOUS TREE (UNDER 6" DIA.)
- IRRIGATED TURF
- BARK MULCH

NOTES:

1. TRACT E IS A PAINT BRUSH HILLS METRO DISTRICT OWNED AND MAINTAINED PARCEL OF THE PAINT BRUSH HILLS SUBDIVISION PLAT FILING NO 4.
2. TRACT E IS DESIGNATED OPEN SPACE.
3. THE INSTALLATION OF THE GAZEBO WILL NOT CHANGE THE LAND USE DESIGNATION AND TRACT E WILL REMAIN OPEN SPACE.



48 hours before you file, CALL UTILITY NOTIFICATION CENTER OF COLORADO (UNCC) **811**
Goa,Electric,Telephone,CATV and Penetration Eastern Pipeline Locations
SCALE VERIFICATION
BAR IS ONE INCH ON ORIGINAL DRAWING
IF NOT ONE INCH ON THIS SHEET SCALE ACCORDINGLY

NO.	REVISIONS DESCRIPTION	DATE	BY

RG AND ASSOCIATES, LLC
4885 Ward Road, Suite 100 • Wheat Ridge, CO • 80033
Gypsum • Loveland • Monte Vista • Wheat Ridge
303-293-8107 • 303-293-8106 (fax) • www.rgengineers.com

SOUTH MANCHESTER PARK
LANDSCAPE PLAN
prepared for
PAINT BRUSH HILLS METRO. DISTRICT

DRAWN BY:	DESIGNED BY:
CLN	RG
JOB NUMBER: 1070.0001	
DATE: 4/18/2017	
SCALE: 1"=10'	
DRAWING NAME: landscape plan	
SHEET NO: 4 of 76	