

STANDARD EL PASO COUNTY GRADING & EROSION CONTROL PLAN NOTES

1. STORMWATER DISCHARGES FROM CONSTRUCTION SITES SHALL NOT CAUSE OR THREATEN TO CAUSE POLLUTION, CONTAMINATION, OR DEGRADATION OF STATE WATERS. ALL WORK AND EARTH DISTURBANCE SHALL BE DONE IN A MANNER THAT MINIMIZES POLLUTION OF ANY ON-SITE OR OFF-SITE WATERS, INCLUDING WETLANDS.
2. NOTWITHSTANDING ANYTHING DEPICTED IN THESE PLANS IN WORDS OR GRAPHIC REPRESENTATION, ALL DRAINAGE AND CONSTRUCTION RELATED TO ROADS, STORM DRAINAGE AND EROSION CONTROL SHALL CONFORM TO THE STANDARDS AND REQUIREMENTS OF THE MOST RECENT VERSION OF THE RELEVANT ADOPTED EL PASO COUNTY STANDARDS, INCLUDING THE LAND DEVELOPMENT CODE, THE ENGINEERING CRITERIA MANUAL, THE DRAINAGE CRITERIA MANUAL, AND THE DRAINAGE CRITERIA MANUAL VOLUME 2. ANY DEVIATIONS FROM REGULATIONS AND STANDARDS MUST BE REQUESTED, AND APPROVED, IN WRITING.
3. A SEPARATE STORMWATER MANAGEMENT PLAN (SWMP) FOR THIS PROJECT SHALL BE COMPLETED AND AN EROSION AND STORMWATER QUALITY CONTROL PERMIT (ESQCP) ISSUED PRIOR TO COMMENCING CONSTRUCTION. MANAGEMENT OF THE SWMP DURING CONSTRUCTION IS THE RESPONSIBILITY OF THE DESIGNATED QUALIFIED STORMWATER MANAGER OR CERTIFIED EROSION CONTROL INSPECTOR. THE SWMP SHALL BE LOCATED ON-SITE AT ALL TIMES DURING CONSTRUCTION AND SHALL BE KEPT UP TO DATE WITH WORK PROGRESS AND CHANGES IN THE FIELD.
4. ONCE THE ESQCP IS APPROVED AND A "NOTICE TO PROCEED" HAS BEEN ISSUED, THE CONTRACTOR MAY INSTALL THE INITIAL STAGE EROSION AND SEDIMENT CONTROL MEASURES AS INDICATED ON THE APPROVED GEC. A PRECONSTRUCTION MEETING BETWEEN THE CONTRACTOR, ENGINEER, AND EL PASO COUNTY WILL BE HELD PRIOR TO ANY CONSTRUCTION. IT IS THE RESPONSIBILITY OF THE APPLICANT TO COORDINATE THE MEETING TIME AND PLACE WITH COUNTY STAFF.
5. CONTROL MEASURES MUST BE INSTALLED PRIOR TO COMMENCEMENT OF ACTIVITIES THAT COULD CONTRIBUTE POLLUTANTS TO STORMWATER. CONTROL MEASURES FOR ALL SLOPES, CHANNELS, DITCHES, AND DISTURBED LAND AREAS SHALL BE INSTALLED IMMEDIATELY UPON COMPLETION OF THE DISTURBANCE.
6. ALL TEMPORARY SEDIMENT AND EROSION CONTROL MEASURES SHALL BE MAINTAINED AND REMAIN IN EFFECTIVE OPERATING CONDITION UNTIL PERMANENT SOIL EROSION CONTROL MEASURES ARE IMPLEMENTED AND FINAL STABILIZATION IS ESTABLISHED. ALL PERSONS ENGAGED IN LAND DISTURBANCE ACTIVITIES SHALL ASSESS THE ADEQUACY OF CONTROL MEASURES AT THE SITE AND IDENTIFY IF CHANGES TO THOSE CONTROL MEASURES ARE NEEDED TO ENSURE THE CONTINUED EFFECTIVE PERFORMANCE OF THE CONTROL MEASURES. ALL CHANGES TO TEMPORARY SEDIMENT AND EROSION CONTROL MEASURES MUST BE INCORPORATED INTO THE STORMWATER MANAGEMENT PLAN.
7. TEMPORARY STABILIZATION SHALL BE IMPLEMENTED ON DISTURBED AREAS AND STOCKPILES WHERE GROUND DISTURBING CONSTRUCTION ACTIVITY HAS PERMANENTLY CEASED OR TEMPORARILY CEASED FOR LONGER THAN 14 DAYS.
8. FINAL STABILIZATION MUST BE IMPLEMENTED AT ALL APPLICABLE CONSTRUCTION SITES. FINAL STABILIZATION IS ACHIEVED WHEN ALL GROUND DISTURBING ACTIVITIES ARE COMPLETE AND ALL DISTURBED AREAS EITHER HAVE A UNIFORM VEGETATIVE COVER WITH INDIVIDUAL PLANT DENSITY OF 70 PERCENT OF PRE-DISTURBANCE LEVELS ESTABLISHED OR EQUIVALENT PERMANENT ALTERNATIVE STABILIZATION METHOD AND EROSION CONTROL MEASURES. ALL TEMPORARY SEDIMENT AND EROSION CONTROL MEASURES SHALL BE REMOVED UPON FINAL STABILIZATION AND BEFORE PERMIT CLOSURE.
9. ALL PERMANENT STORMWATER MANAGEMENT FACILITIES SHALL BE INSTALLED AS DESIGNED IN THE APPROVED PLANS. ANY PROPOSED CHANGES THAT EFFECT THE DESIGN OR FUNCTION OF PERMANENT STORMWATER MANAGEMENT STRUCTURES MUST BE APPROVED BY THE ECM ADMINISTRATOR PRIOR TO IMPLEMENTATION.
10. EARTH DISTURBANCES SHALL BE CONDUCTED IN SUCH A MANNER SO AS TO EFFECTIVELY MINIMIZE ACCELERATED SOIL EROSION AND RESULTING SEDIMENTATION. ALL DISTURBANCES SHALL BE DESIGNED, CONSTRUCTED, AND COMPLETED SO THAT THE EXPOSED AREA OF ANY DISTURBED LAND SHALL BE LIMITED TO THE PRACTICAL PERIOD OF TIME. PRE-EXISTING VEGETATION SHALL BE PROTECTED AND MAINTAINED WITHIN 50 HORIZONTAL FEET OF A WATERS OF THE STATE UNLESS SHOWN TO BE INFEASIBLE AND SPECIFICALLY REQUESTED AND APPROVED.
11. COMPACTION OF SOIL MUST BE PREVENTED IN AREAS DESIGNATED FOR INFILTRATION CONTROL MEASURES OR WHERE FINAL STABILIZATION WILL BE ACHIEVED BY VEGETATIVE COVER. AREAS DESIGNATED FOR INFILTRATION CONTROL MEASURES SHALL ALSO BE PROTECTED FROM SEDIMENTATION DURING CONSTRUCTION UNTIL FINAL STABILIZATION IS ACHIEVED. IF COMPACTION PREVENTION IS NOT FEASIBLE DUE TO SITE CONSTRAINTS, ALL AREAS DESIGNATED FOR INFILTRATION AND VEGETATION CONTROL MEASURES MUST BE LOOSENEED PRIOR TO INSTALLATION OF THE CONTROL MEASURE(S).
12. ANY TEMPORARY OR PERMANENT FACILITY DESIGNED AND CONSTRUCTED FOR THE CONVEYANCE OF STORMWATER AROUND, THROUGH, OR FROM THE EARTH DISTURBANCE AREA SHALL BE A STABILIZED CONVEYANCE DESIGNED TO MINIMIZE EROSION AND THE DISCHARGE OF SEDIMENT OFF-SITE.
13. CONCRETE WASH WATER SHALL BE CONTAINED AND DISPOSED OF IN ACCORDANCE WITH THE SWMP. NO WASH WATER SHALL BE DISCHARGED TO OR ALLOWED TO ENTER STATE WATERS, INCLUDING ANY SURFACE OR SUBSURFACE STORM DRAINAGE SYSTEM OR FACILITIES. CONCRETE WASHOUTS SHALL NOT BE LOCATED IN AN AREA WHERE SHALLOW GROUNDWATER MAY BE PRESENT, OR WITHIN 50 FEET OF A SURFACE WATER BODY, CREEK OR STREAM.
14. DURING DEWATERING OPERATIONS OF UNCONTAMINATED GROUND WATER MAY BE DISCHARGED ON SITE, BUT SHALL NOT LEAVE THE SITE IN THE FORM OF SURFACE RUNOFF UNLESS AN APPROVED STATE DEWATERING PERMIT IS IN PLACE.
15. EROSION CONTROL BLANKETING OR OTHER PROTECTIVE COVERING SHALL BE USED ON SLOPES STEEPER THAN 3:1.
16. CONTRACTOR SHALL BE RESPONSIBLE FOR THE REMOVAL OF ALL WASTES FROM THE CONSTRUCTION SITE FOR DISPOSAL IN ACCORDANCE WITH LOCAL AND STATE REGULATORY REQUIREMENTS. NO CONSTRUCTION DEBRIS, TREE SLASH, BUILDING MATERIAL WASTES OR UNUSED BUILDING MATERIALS SHALL BE BURIED, DUMPED, OR DISCHARGED AT THE SITE.
17. WASTE MATERIALS SHALL NOT BE TEMPORARILY PLACED OR STORED IN THE STREET, ALLEY, OR OTHER PUBLIC WAY, UNLESS IN ACCORDANCE WITH AN APPROVED TRAFFIC CONTROL PLAN. CONTROL MEASURES MAY BE REQUIRED BY EL PASO COUNTY ENGINEERING IF DEEMED NECESSARY, BASED ON SPECIFIC CONDITIONS AND CIRCUMSTANCES.
18. TRACKING OF SOILS AND CONSTRUCTION DEBRIS OFF-SITE SHALL BE MINIMIZED. MATERIALS TRACKED OFF-SITE SHALL BE CLEANED UP AND PROPERLY DISPOSED OF IMMEDIATELY.
19. THE OWNER/DEVELOPER SHALL BE RESPONSIBLE FOR THE REMOVAL OF ALL CONSTRUCTION DEBRIS, DIRT, TRASH, ROCK, SEDIMENT, SOIL, AND SAND THAT MAY ACCUMULATE IN ROADS, STORM DRAINS AND OTHER DRAINAGE CONVEYANCE SYSTEMS AND STORMWATER APPURTENANCES AS A RESULT OF SITE DEVELOPMENT.
20. THE QUANTITY OF MATERIALS STORED ON THE PROJECT SITE SHALL BE LIMITED, AS MUCH AS PRACTICAL, TO THAT QUANTITY REQUIRED TO PERFORM THE WORK IN AN ORDERLY SEQUENCE. ALL MATERIALS STORED ON-SITE SHALL BE STORED IN A NEAT, ORDERLY MANNER, IN THEIR ORIGINAL CONTAINERS, WITH ORIGINAL MANUFACTURER'S LABELS.
21. NO CHEMICAL(S) HAVING THE POTENTIAL TO BE RELEASED IN STORMWATER ARE TO BE STORED OR USED ON-SITE UNLESS PERMISSION FOR THE USE OF SUCH CHEMICAL(S) IS GRANTED IN WRITING BY THE ECM ADMINISTRATOR. IN GRANTING APPROVAL FOR THE USE OF SUCH CHEMICAL(S), SPECIAL CONDITIONS AND MONITORING MAY BE REQUIRED.
22. BULK STORAGE OF ALLOWED PETROLEUM PRODUCTS OR OTHER ALLOWED LIQUID CHEMICALS IN EXCESS OF 55 GALLONS SHALL REQUIRE ADEQUATE SECONDARY CONTAINMENT PROTECTION TO CONTAIN ALL SPILLS ON-SITE AND TO PREVENT ANY SPILLED MATERIALS FROM ENTERING STATE WATERS, ANY SURFACE OR SUBSURFACE STORM DRAINAGE SYSTEM OR OTHER FACILITIES.
23. NO PERSON SHALL CAUSE THE IMPEDIMENT OF STORMWATER FLOW IN THE CURB AND GUTTER OR DITCH EXCEPT WITH APPROVED SEDIMENT CONTROL MEASURES.
24. OWNER/DEVELOPER AND THEIR AGENTS SHALL COMPLY WITH THE "COLORADO WATER QUALITY CONTROL ACT" (TITLE 25, ARTICLE 8, CRS), AND THE "CLEAN WATER ACT" (33 USC 1344), IN ADDITION TO THE REQUIREMENTS OF THE LAND DEVELOPMENT CODE, DCM VOLUME I, AND THE ECM APPENDIX I. ALL APPROPRIATE PERMITS MUST BE OBTAINED BY THE CONTRACTOR PRIOR TO CONSTRUCTION (1041, NPDES, FLOODPLAIN, 404, FUGITIVE DUST, ETC.). IN THE EVENT OF CONFLICTS BETWEEN THESE REQUIREMENTS AND OTHER LAWS, RULES, OR REGULATIONS OF OTHER FEDERAL, STATE, LOCAL, OR COUNTY AGENCIES, THE MOST RESTRICTIVE LAWS, RULES, OR REGULATIONS SHALL APPLY.
25. ALL CONSTRUCTION TRAFFIC MUST ENTER/EXIT THE SITE ONLY AT APPROVED CONSTRUCTION ACCESS POINTS.
26. PRIOR TO CONSTRUCTION THE PERMITTEE SHALL VERIFY THE LOCATION OF EXISTING UTILITIES.
27. A WATER SOURCE SHALL BE AVAILABLE ON-SITE DURING EARTHWORK OPERATIONS AND SHALL BE UTILIZED AS REQUIRED TO MINIMIZE DUST FROM EARTHWORK EQUIPMENT AND WIND.
28. THE SOILS REPORT FOR THIS SITE HAS BEEN PREPARED BY SOIL TESTING AND ENGINEERING INC., DATE FEBRUARY 24, 2009 AND SHALL BE CONSIDERED A PART OF THESE PLANS.
29. AT LEAST TEN (10) DAYS PRIOR TO THE ANTICIPATED START OF CONSTRUCTION, FOR PROJECTS THAT WILL DISTURB ONE (1) ACRE OR MORE, THE OWNER OR OPERATOR OF CONSTRUCTION ACTIVITY SHALL SUBMIT A PERMIT APPLICATION FOR STORMWATER DISCHARGE TO THE COLORADO DEPARTMENT OF PUBLIC HEALTH AND ENVIRONMENT, WATER QUALITY DIVISION. THE APPLICATION CONTAINS CERTIFICATION OF COMPLETION OF A STORMWATER MANAGEMENT PLAN (SWMP), OF WHICH THIS GRADING AND EROSION CONTROL PLAN MAY BE A PART, FOR INFORMATION OR APPLICATION MATERIALS CONTACT:

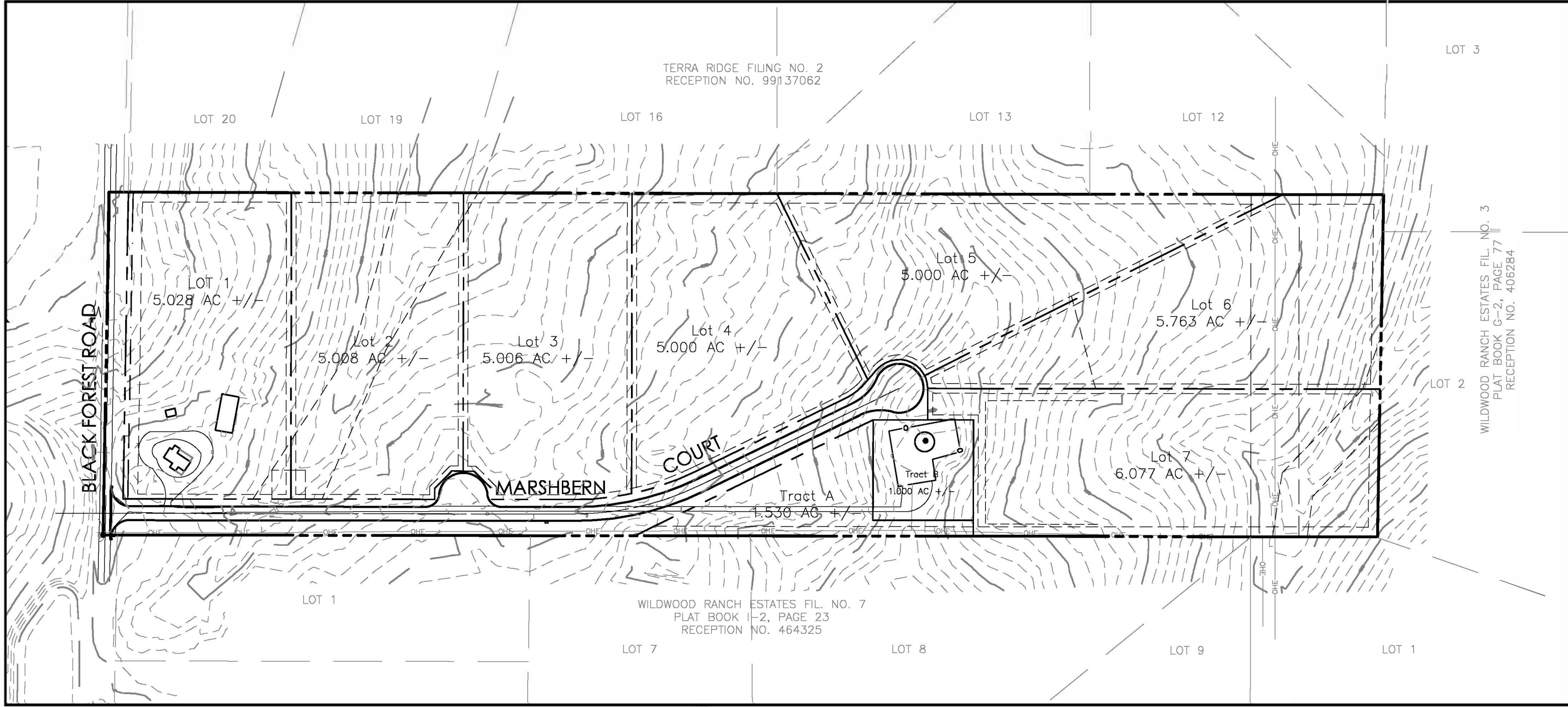
COLORADO DEPARTMENT OF PUBLIC HEALTH AND ENVIRONMENT
WATER QUALITY CONTROL DIVISION
WQCD - PERMITS
4300 CHERRY CREEK DRIVE SOUTH
DENVER, CO 80246-1830
ATTN: PERMITS UNIT

Grading and Erosion Control Plans

for

Matika Subdivision Filing No. 1

El Paso County, Colorado



ABBREVIATIONS

EL	ELEVATION	ROW	RIGHT-OF-WAY
PC	POINT OF CURVATURE	R	RADIUS
PI	POINT OF INTERSECTION	T	TANGENT
PT	POINT OF TANGENCY	L	LENGTH
PCR	POINT OF CURVE RETURN	LF	LINEAR FEET
PRC	POINT OF REVERSE CURVATURE	CL	CENTERLINE
PVC	POINT OF VERTICAL CURVATURE	X.X'X" R	DIMENSION RIGHT OF CL
PVI	POINT OF VERTICAL INTERSECTION	X.X'X" L	DIMENSION LEFT OF CL
PVT	POINT OF VERTICAL TANGENCY	PL	PROPERTY LINE
GB	GRADE BREAK	PVRC	POINT OF VERT REVERSE CURVATURE
CSP	CORRUGATED STEEL PIPE	VC	VERTICAL CURVE
RCP	REINFORCED CONCRETE PIPE	AP	ANGLE POINT
CBC	CONCRETE BOX CULVERT	STA	STATION
TBC	TOP BACK CURB	INV	INVERT
BT	BEGIN TAPER	RG	RAIN GARDEN
ET	END TAPER	SFB	SAND FILTER BASIN
EC	EDGE OF CONCRETE		



LEGEND

EXISTING	PROPOSED
BOUNDARY LINE	BOUNDARY LINE
ADJACENT BOUNDARY LINE	LOT LINE
ADJACENT LOT LINE	EASEMENT LINE
EASEMENT LINE	CENTER LINE
INDEX CONTOUR	INDEX CONTOUR
INTERMEDIATE CONTOUR	INTERMEDIATE CONTOUR
TEST HOLE LOCATION	SLOPE / GRADE
CURB AND GUTTER	SPOT ELEVATION
SIGN	CONSTRUCTION BOUNDARY/LIMITS OF DISTURBANCE
FENCE	
LIGHT POLE	
MANHOLE	
UTILITY POLE	
MISC OBJECT	
PILE	
CULVERT	
ROCK	
MAILBOX	
TREE	
RIPRAP	
POLE-ANCHOR	



OWNER/DEVELOPER

WESTOVER HOMES LLC
8605 EXPLORER DR, STE 250
COLORADO SPRINGS, CO 80920
719.598.5190

EL PASO COUNTY
PLANNING AND COMMUNITY DEVELOPMENT
2880 INTERNATIONAL CIRCLE, SUITE 110
COLORADO SPRINGS, CO 80910
719.528.6300

BLACK FOREST FIRE DEPARTMENT

11445 TEACHOUT ROAD
BLACK FOREST, CO 80908
719.495.4330

MOUNTAIN VIEW ELECTRIC ASSOCIATION

11140 E. WOODMEN RD.
FALCON, CO 80831-9127
719.495.2283

SHEET INDEX

PLAN SET SHEET NO.	SHEET TITLE
1 OF 5	COVER SHEET, DETAILS, NOTES & APPROVALS
2 OF 5	GRADING & EROSION CONTROL PLAN
3 OF 5	EROSION CONTROL DETAILS
4 OF 5	EROSION CONTROL DETAILS
5 OF 5	EROSION CONTROL DETAILS

MVE DRAWING NO.

GEC-CS
GEC-EC1
GEC-EC2
GEC-EC3
GEC-EC4

GENERAL NOTES

1. ALL NEW CONSTRUCTION IS TO CONFORM TO THE SPECIFICATIONS OF EL PASO COUNTY.
2. UNDERGROUND FACILITIES, STRUCTURES AND UTILITIES HAVE BEEN DRAWN FROM AVAILABLE RECORDS AND/OR SURFACE EVIDENCE. THE LOCATION OF ALL UTILITIES MAY NOT BE SHOWN OR MAY NOT HAVE BEEN LOCATED. BELOW GROUND LOCATIONS, THE CONTRACTOR SHALL BE FULLY RESPONSIBLE FOR THE RELATIONSHIP BETWEEN PROPOSED WORK AND EXISTING FACILITIES. STRUCTURES AND UTILITIES MUST BE CONSIDERED APPROXIMATE. CONTRACTOR SHALL BE RESPONSIBLE FOR CONTACTING ALL SUBSURFACE UTILITY OWNERS PRIOR TO BEGINNING WORK TO DETERMINE LOCATION OF UTILITY FACILITIES. ALL UTILITIES SHALL BE LOCATED PRIOR TO ANY EARTH WORK OR DIGGING (1-800-922-1987). THE CONTRACTOR SHALL BE FULLY RESPONSIBLE FOR ANY AND ALL DAMAGES WHICH MAY BE OCCASIONED BY THE CONTRACTORS FAILURE TO EXACTLY LOCATE AND PRESERVE ANY AND ALL UTILITIES.
3. EXISTING CONDITIONS SHALL BE VERIFIED BY THE GENERAL CONTRACTOR. DISCREPANCIES ARE TO BE REPORTED TO THE ENGINEER PRIOR TO CONSTRUCTION.
4. SOIL PREPARATION, SEEDING, AND MULCHING FOR AN ESTIMATED 3.3 ACRES WILL BE REQUIRED ON ALL DISTURBED AREAS NOT SURFACED. THE FOLLOWING TYPES AND RATES SHALL BE USED:

GRASS	VARIETY	AMOUNT IN PLS LBS. PER ACRE
SIDEOTS GRAMA	EL RENO	3.0 lbs.
WESTERN WHEATGRASS	BARTON	2.5 lbs.
SLENDER WHEAT GRASS	NATIVE	2.0 lbs.
LITTLE BLUESTEM	PASTURA	2.0 lbs.
SAND DROPSIED	NATIVE	0.5 lbs.
SWITCH GRASS	NEBRASKA 28	3.0 lbs.
WEEPING LOVE GRASS	MORPHA	1.0 lbs.
	TOTAL	14.0 lbs.
5. SEEDING APPLICATION: DRILLED TO A DEPTH OF 2" TO 5" INTO SOIL WHERE POSSIBLE. BROADCAST AND RAKED TO COVER ON STEEPER THAN 3:1 SLOPES WHERE ACCESS IS LIMITED OR UNSAFE FOR EQUIPMENT.
6. MULCHING REQUIREMENT AND APPLICATION: 2.0 TONS PER ACRE. NATIVE HAY MECHANICALLY CRIMPED INTO SOIL.
7. ALL STORM DRAIN SHALL BE REINFORCED CONCRETE PIPE. ALL CULVERTS SHALL BE PLACED COMPLETE WITH FLARED END SECTIONS. ALL STORM DRAIN FITTINGS AND RENDS SHALL BE PRE-CAST. STORM DRAIN PIPE MAY ALSO BE CORRUGATED METAL OR HOPE. PLACED IN ACCORDANCE WITH EL PASO COUNTY SPECIFICATIONS.
8. CONTRACTOR WILL BE RESPONSIBLE FOR SCHEDULING A PRE-CONSTRUCTION MEETING HELD PRIOR TO CONSTRUCTION WITH EPC-PCD, ENGINEER, AND CONTRACTOR IN ATTENDANCE.
9. CONTRACTOR IS RESPONSIBLE FOR ALL OF HIS OPERATIONS ON THE SITE. CONTRACTOR SHALL OBSERVE ALL SAFETY AND OSHA REGULATIONS DURING CONSTRUCTION OPERATIONS. TRENCH WIDTHS AND SLOPE ANGLES SHALL BE DETERMINED BY THE CONTRACTOR IN THE FIELD AND ACCORDING TO SAFETY AND OSHA REGULATIONS.
10. ALL NECESSARY PERMITS, SUCH AS SWMP, FUGITIVE DUST, ACCESS, C.O.E. 404, ESQCP PERMIT, ETC. SHALL BE OBTAINED PRIOR TO CONSTRUCTION.

STANDARD EL PASO COUNTY CONSTRUCTION PLAN NOTES

1. ALL DRAINAGE AND ROADWAY CONSTRUCTION SHALL MEET THE STANDARDS AND SPECIFICATIONS OF THE CITY OF COLORADO SPRINGS/EL PASO COUNTY DRAINAGE CRITERIA MANUAL, VOLUMES 1 AND 2, AND THE EL PASO COUNTY ENGINEERING CRITERIA MANUAL.
2. CONTRACTOR SHALL BE RESPONSIBLE FOR THE NOTIFICATION AND FIELD NOTIFICATION OF ALL EXISTING UTILITIES, WHETHER SHOWN ON THE PLANS OR NOT, BEFORE BEGINNING CONSTRUCTION. LOCATION OF EXISTING UTILITIES SHALL BE VERIFIED BY THE CONTRACTOR PRIOR TO CONSTRUCTION. CALL 811 TO CONTACT THE UTILITY NOTIFICATION CENTER OF COLORADO (UNCC).
3. CONTRACTOR SHALL KEEP A COPY OF THESE APPROVED PLANS, THE GRADING AND EROSION CONTROL PLAN, THE STORMWATER MANAGEMENT PLAN (SWMP), THE SOILS AND GEOTECHNICAL REPORT, AND THE APPROPRIATE DESIGN AND CONSTRUCTION STANDARDS AND SPECIFICATIONS AT THE JOB SITE AT ALL TIMES, INCLUDING THE FOLLOWING:
 - a. EL PASO COUNTY ENGINEERING CRITERIA MANUAL (ECM)
 - b. CITY OF COLORADO SPRINGS/EL PASO COUNTY DRAINAGE CRITERIA MANUAL, VOLUMES 1 AND 2
 - c. COLORADO DEPARTMENT OF TRANSPORTATION (CDOT) STANDARD SPECIFICATIONS FOR ROAD AND BRIDGE CONSTRUCTION
 - d. CDOT M & S STANDARDS
4. NOTWITHSTANDING ANYTHING DEPICTED IN THESE PLANS IN WORDS OR GRAPHIC REPRESENTATION, ALL DESIGN AND CONSTRUCTION RELATED TO ROADS, STORM DRAINAGE AND EROSION CONTROL SHALL CONFORM TO THE STANDARDS AND REQUIREMENTS OF THE MOST RECENT VERSION OF THE RELEVANT ADOPTED EL PASO COUNTY STANDARDS, INCLUDING THE LAND DEVELOPMENT CODE, THE ENGINEERING CRITERIA MANUAL, THE DRAINAGE CRITERIA MANUAL, AND THE DRAINAGE CRITERIA MANUAL VOLUME 2. ANY DEVIATIONS FROM REGULATIONS AND STANDARDS MUST BE REQUESTED, AND APPROVED, IN WRITING. ANY MODIFICATIONS NECESSARY TO MEET CRITERIA AFTER THE FACT WILL BE ENTIRELY THE DEVELOPER'S RESPONSIBILITY TO RECTIFY.
5. IT IS THE DESIGN ENGINEER'S RESPONSIBILITY TO ACCURATELY SHOW EXISTING CONDITIONS, BOTH ON-SITE AND OFF-SITE, ON THE CONSTRUCTION PLANS. ANY MODIFICATIONS NECESSARY DUE TO CONFLICTS, OMISSIONS, OR CHANGED CONDITIONS WILL BE ENTIRELY THE DEVELOPER'S RESPONSIBILITY TO RECTIFY.
6. CONTRACTOR SHALL SCHEDULE A PRE-CONSTRUCTION MEETING WITH EL PASO COUNTY PLANNING AND COMMUNITY DEVELOPMENT DEPARTMENT (PCD) - INSPECTIONS, PRIOR TO STARTING CONSTRUCTION.
7. IT IS THE CONTRACTOR'S RESPONSIBILITY TO UNDERSTAND THE REQUIREMENTS OF ALL JURISDICTIONAL AGENCIES AND TO OBTAIN ALL REQUIRED PERMITS, INCLUDING BUT NOT LIMITED TO EL PASO COUNTY EROSION AND STORMWATER QUALITY CONTROL PERMIT (ESQCP), REGIONAL BUILDING FLOODPLAIN DEVELOPMENT PERMIT, U.S. ARMY CORPS OF ENGINEERS-ISSUED 401 AND/OR 404 PERMITS, AND COUNTY AND STATE FUGITIVE DUST PERMITS.
8. CONTRACTOR SHALL NOT DEVIATE FROM THE PLANS WITHOUT FIRST OBTAINING WRITTEN APPROVAL FROM THE DESIGN ENGINEER AND PCD. CONTRACTOR SHALL NOTIFY THE DESIGN ENGINEER IMMEDIATELY UPON DISCOVERY OF ANY ERRORS OR INCONSISTENCIES.
9. ALL STORM DRAIN PIPE SHALL BE CLASS III RCP UNLESS OTHERWISE NOTED AND APPROVED BY DSD.
10. CONTRACTOR SHALL COORDINATE GEOTECHNICAL TESTING PER ECM STANDARDS. PAVEMENT DESIGN SHALL BE APPROVED BY EL PASO COUNTY PCD PRIOR TO PLACEMENT OF CURB AND GUTTER AND PAVEMENT.
11. ALL CONSTRUCTION TRAFFIC MUST ENTER/EXIT THE SITE AT APPROVED CONSTRUCTION ACCESS POINTS.
12. SIGHT VISIBILITY TRIANGLES AS IDENTIFIED IN THE PLANS SHALL BE PROVIDED AT ALL INTERSECTIONS. OBSTRUCTIONS GREATER THAN 18 INCHES ABOVE FLOWLINE ARE NOT ALLOWED WITHIN SIGHT TRIANGLES.
13. SIGNING AND STRIPING SHALL COMPLY WITH EL PASO COUNTY DOT AND MUTCD CRITERIA. [IF APPLICABLE, ADDITIONAL SIGNING AND STRIPING NOTES WILL BE PROVIDED.]
14. CONTRACTOR SHALL OBTAIN ANY PERMITS REQUIRED BY EL PASO COUNTY DOT, INCLUDING WORK WITHIN THE RIGHT-OF-WAY AND SPECIAL TRANSPORT PERMITS.
15. THE LIMITS OF CONSTRUCTION SHALL REMAIN WITHIN THE PROPERTY LINE UNLESS OTHERWISE NOTED. THE OWNER/DEVELOPER SHALL OBTAIN WRITTEN PERMISSION AND EASEMENTS, WHERE REQUIRED, FROM ADJOINING PROPERTY OWNER(S) PRIOR TO ANY OFF-SITE DISTURBANCE, GRADING, OR CONSTRUCTION.

OWNER'S STATEMENT

I, THE OWNER/DEVELOPER HAVE READ AND WILL COMPLY WITH THE REQUIREMENTS OF THE GRADING AND EROSION CONTROL PLAN.

Jordan Savage _____ DATE 6/17/21

JORDAN SAVAGE
WESTOVER HOMES LLC
8605 EXPLORER DRIVE, STE 250
COLORADO SPRINGS, CO 80920

ENGINEER'S STATEMENT

THIS GRADING AND EROSION CONTROL PLAN WAS PREPARED UNDER MY DIRECTION AND SUPERVISION AND IS CORRECT TO THE BEST OF MY KNOWLEDGE AND BELIEF. SAID PLAN HAS BEEN PREPARED ACCORDING TO THE CRITERIA ESTABLISHED BY THE COUNTY FOR GRADING AND EROSION CONTROL PLANS. I ACCEPT RESPONSIBILITY FOR ANY LIABILITY CAUSED BY ANY NEGLIGENT ACTS, ERRORS OR OMISSIONS IN THE PREPARING THIS PLAN.

David R. Gorman _____ DATE 6/18/2021
DAVID R. GORMAN, P.E., INDEPENDENT ENGINEER, INC.
FOR AND ON BEHALF OF THE PROFESSIONAL ENGINEER
31672
6/18/2021
COLORADO NO. 31672

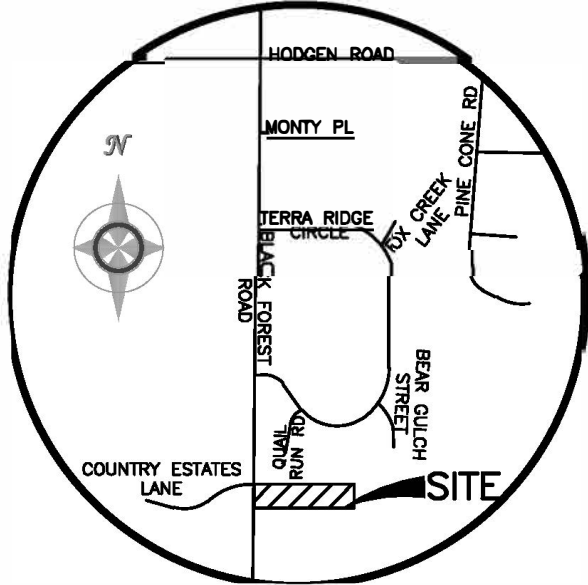
EL PASO COUNTY DEPARTMENT OF TRANSPORTATION

COUNTY PLAN REVIEW IS PROVIDED ONLY FOR GENERAL CONFORMANCE WITH COUNTY DESIGN CRITERIA. THE COUNTY IS NOT RESPONSIBLE FOR THE ACCURACY AND ADEQUACY OF THE DESIGN, DIMENSIONS, AND/OR ELEVATIONS WHICH SHALL BE CONFIRMED AT THE JOB SITE. THE COUNTY THROUGH THE APPROVAL OF THIS DOCUMENT ASSUMES NO RESPONSIBILITY FOR COMPLETENESS AND/OR ACCURACY OF THIS DOCUMENT.

FILED IN ACCORDANCE WITH THE REQUIREMENTS OF THE EL PASO COUNTY LAND DEVELOPMENT CODE, DRAINAGE CRITERIA MANUAL VOLUMES 1 AND 2, AND ENGINEERING CRITERIA MANUAL AS AMENDED.

IN ACCORDANCE WITH ECM SECTION 1.12, THESE CONSTRUCTION DOCUMENTS WILL BE VALID FOR CONSTRUCTION FOR A PERIOD OF 2 YEARS FROM THE DATE SIGNED BY THE EL PASO COUNTY ENGINEER. IF CONSTRUCTION HAS NOT STARTED WITHIN THOSE 2 YEARS THE PLANS WILL NEED TO BE RESUBMITTED FOR APPROVAL, INCLUDING PAYMENT OF REVIEW FEES AT THE PLANNING AND COMMUNITY DEVELOPMENT DIRECTORS DISCRETION.

APPROVED
Engineering Department
07/12/2021 10:53 AM
JENNIFER IRVINE, P.E.
COUNTY ENGINEER / ECM ADMINISTRATOR
EPC Planning & Community Development Department



VICINITY MAP

NTS

BENCHMARK
THE BENCHMARK FOR THESE PLANS IS AN NGS MONUMENT DESIGNATION 4 BB RESET (PID KK2118) LOCATED AT THE INTERSECTION OF HODGEN ROAD AND STATE HIGHWAY 83. ELEVATION = 7570.80 SFT (NAVD 88).

BASIS OF BEARINGS
BEARINGS REFERRED TO HEREIN ARE BASED ON THE WEST LINE OF THE SOUTHWEST QUARTER OF SECTION 32, TOWNSHIP 11 SOUTH, RANGE 65 WEST OF THE 6TH P.M., EL PASO COUNTY, COLORADO, ASSUMED TO BEAR N00°57'55"E.

MVE, INC.
ENGINEERS & SURVEYORS

1903 library street, suite 200 colorado springs, co 80909 719.635.5736

REVISIONS

DESIGNED BY CCC 12-31-2008
DRAWN BY DRG 12-31-2008
CHECKED BY _____
AS-BUILTS BY _____
CHECKED BY _____

MATIKA
SUBDIVISION FIL. NO. 1

COVER SHEET
Details, Notes and
Approvals

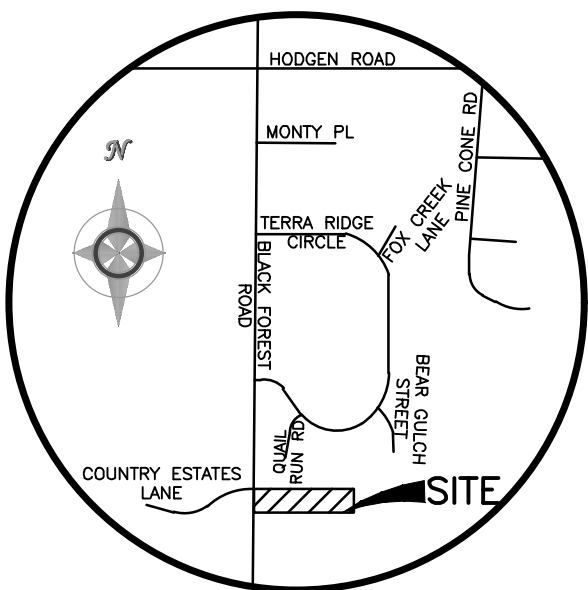
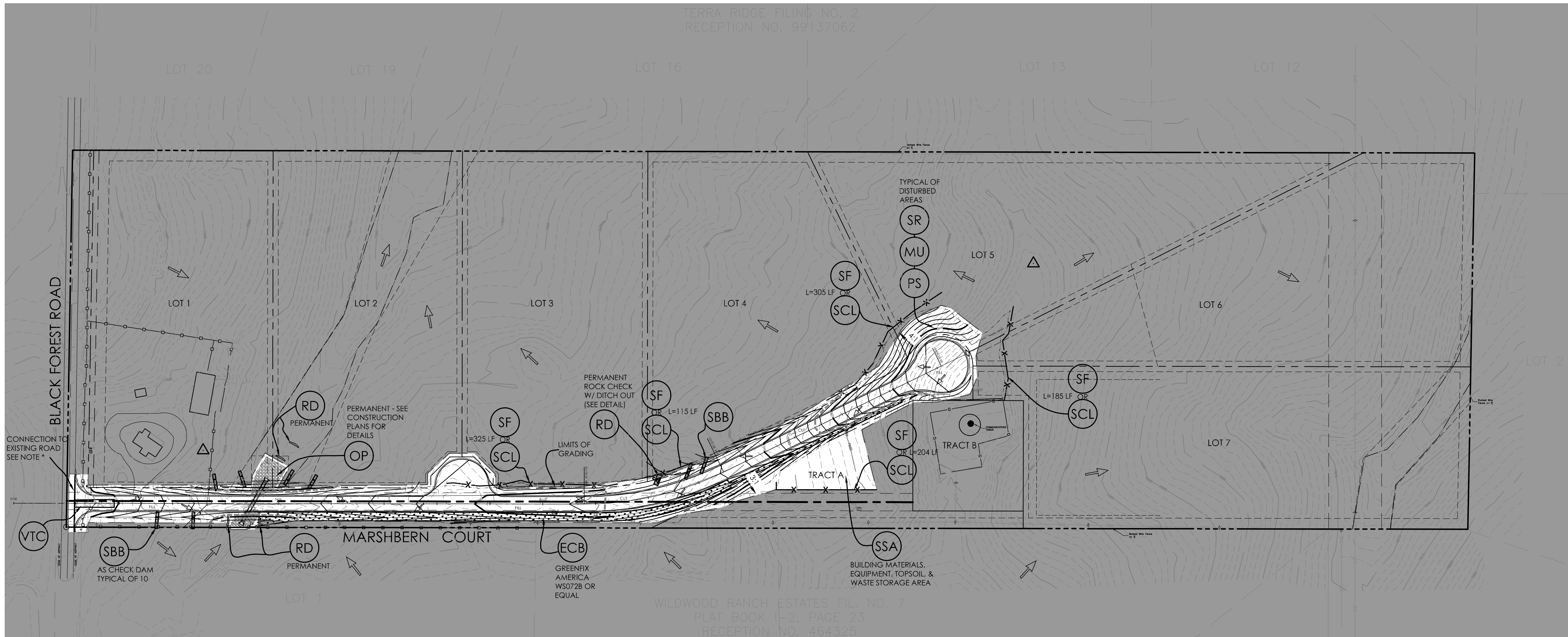
MVE PROJECT 61154

MVE DRAWING GEC-CS

PCD Filing No.: CDR-21-003

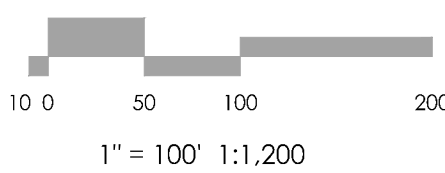
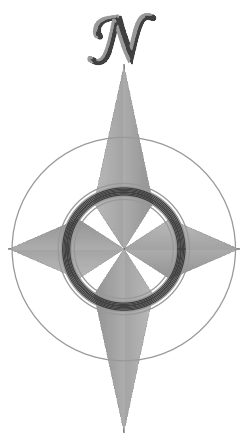
June 8, 2021
SHEET 1 OF 5

TERRA RIDGE FILING NO. 2
RECEPTION NO. 99137062



VICINITY MAP
NTS

BENCHMARK
THE BENCHMARK FOR THESE PLANS IS AN NGS MONUMENT DESIGNATION 488 RESET (PID KK2118) LOCATED AT THE INTERSECTION OF HODGEN ROAD AND STATE HIGHWAY 83. ELEVATION = 7570.80 SFT (NAVD 88).
BASIS OF BEARINGS
BEARINGS REFERRED TO HEREIN ARE BASED ON THE WEST LINE OF THE SOUTHWEST QUARTER OF SECTION 52, TOWNSHIP 11 SOUTH, RANGE 65 WEST OF THE 6TH P.M., EL PASO COUNTY, COLORADO, ASSUMED TO BEAR N00°57'55"E.



BMP LEGEND			BMP LEGEND		
MAP SYMBOL	KEY	DESCRIPTION	MAP SYMBOL	KEY	DESCRIPTION
INITIAL BMPs			FINAL BMPs		
	SSA	STABILIZED STAGING AREA (Initial BMP)		SR	SURFACE ROUGHENING (Final BMP)
	SCL	SEDIMENT CONTROL LOG (Initial BMP)		MU	MULCHING (Final BMP)
	VTC	VEHICLE TRACKING CONTROL (Initial BMP)		PS	PERMANENT SEEDING (Final BMP)
	RD	ROCK CHECK DAM (Initial BMP)			
	SF	SILT FENCE (Initial BMP)			
INTERIM BMPs					
	ECB	EROSION CONTROL BLANKET (Interim BMP)			
	SBB	STRAW BALE BARRIER AS CHECK DAM (Interim BMP)			
	OP	OUTLET PROTECTION (RIP-RAP) (INTERIM BMP)			

EROSION CONTROL DATA

SOIL DATA	
PRIMARY SOIL DESCRIPTION	PEYTON-PRING COMPLEX
PERMEABILITY	MODERATE TO RAPID
SURFACE RUNOFF	MEDIUM
HAZARD OF EROSION	MODERATE
HYDROLOGIC SOIL GROUP	B
VEGETATION:	
SITE CONSIST OF OPEN PRAIRIE WITH NATIVE GRASSES. NO SIGNIFICANT TREES OR SHRUBS EXIST IN AREA OF DISTURBANCE.	

EROSION CONTROL NOTES

1. ALL DISTURBED AREAS SHALL BE REVEGETATED. SEE GENERAL NOTES FOR SEED MIX AND APPLICATION NOTES.
2. RIP-RAP APRONS WILL BE PLACED AT ALL CULVERT OUTLETS. (SEE DETAILS FOR RIP-RAP APRONS ON THIS SHEET.)
3. HAY BALES WILL BE PLACED UPSTREAM OF CULVERTS IN NEW ROADSIDE DITCHES AS DETERMINED IN THE FIELD BY THE ENGINEER.
4. ALL PERSONS ENGAGED IN EARTH DISTURBANCE SHALL IMPLEMENT AND MAINTAIN ACCEPTABLE SOIL EROSION AND SEDIMENT CONTROL MEASURES INCLUDING BMPs IN CONFORMANCE WITH THIS EROSION CONTROL PLAN AND THE BMP DETAILS SHOWN ON THIS PLAN.
5. THE INSTALLATION OF THE BEST LEVEL OF TEMPORARY EROSION CONTROL FACILITIES AND BMPs SHALL BE INSTALLED PRIOR TO ANY EARTH DISTURBANCE OPERATIONS TAKING PLACE.
6. CONTRACTOR SHALL PROVIDE APPROPRIATE EROSION CONTROL MEASURES DURING EARTHWORK OPERATIONS TO CONTROL EROSION AND SEDIMENT TRANSFER TO ADJACENT PROPERTIES. EROSION CONTROL MEASURES ARE NOT LIMITED TO THOSE NOTED ON THIS PLAN.
7. SEDIMENT (MUD AND DIRT) TRANSPORTED ONTO A PUBLIC ROAD, REGARDLESS OF THE SIZE OF THE SITE, SHALL BE CLEANED AT THE END OF EACH DAY.
8. SOIL EROSION CONTROL MEASURES FOR ALL SLOPES, CHANNELS, DITCHES, OR ANY DISTURBED LAND AREA SHALL BE COMPLETED WITHIN FOURTEEN (14) CALENDAR DAYS AFTER FINAL GRADING OR FINAL EARTH DISTURBANCE HAS BEEN COMPLETED. DISTURBED AREAS AND STOCKPILES WHICH ARE NOT AT FINAL GRADE BUT WILL REMAIN DORMANT FOR LONGER THAN 30 DAYS SHALL ALSO BE MULCHED WITHIN 14 DAYS AFTER INTERIM GRADING. ANY AREA THAT IS GOING TO REMAIN IN AN INTERIM STATE FOR MORE THAN 30 DAYS SHALL ALSO BE SEED. ALL TEMPORARY SOIL EROSION CONTROL MEASURES AND BMPs SHALL BE MAINTAINED UNTIL PERMANENT SOIL EROSION CONTROL MEASURES ARE IMPLEMENTED.

*NOTE: CONTRACTOR MAY NEED BPC "WORK IN THE ROW PERMIT" FOR THE CONNECTION TO THE EXISTING ROAD.

REVISIONS

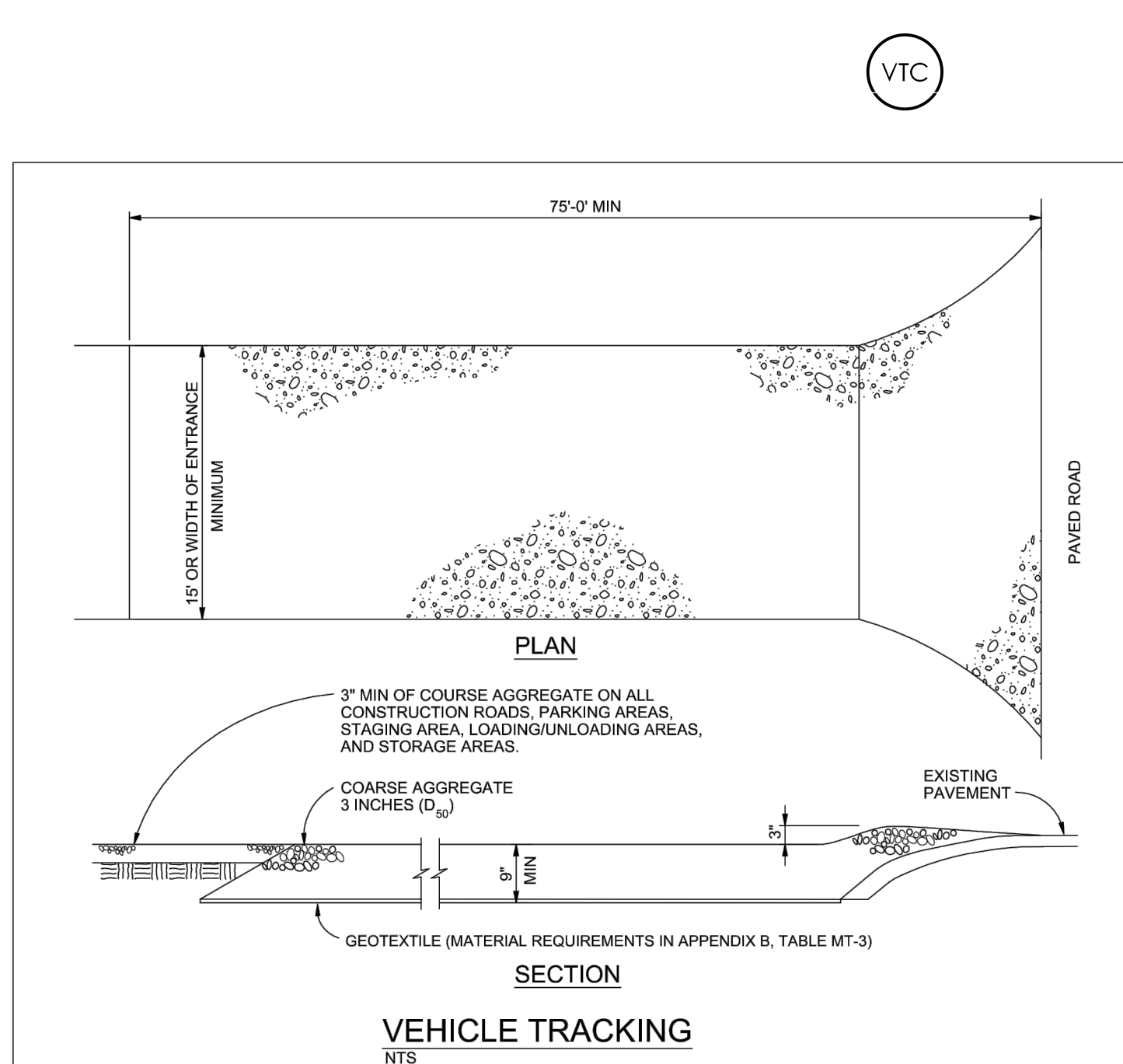
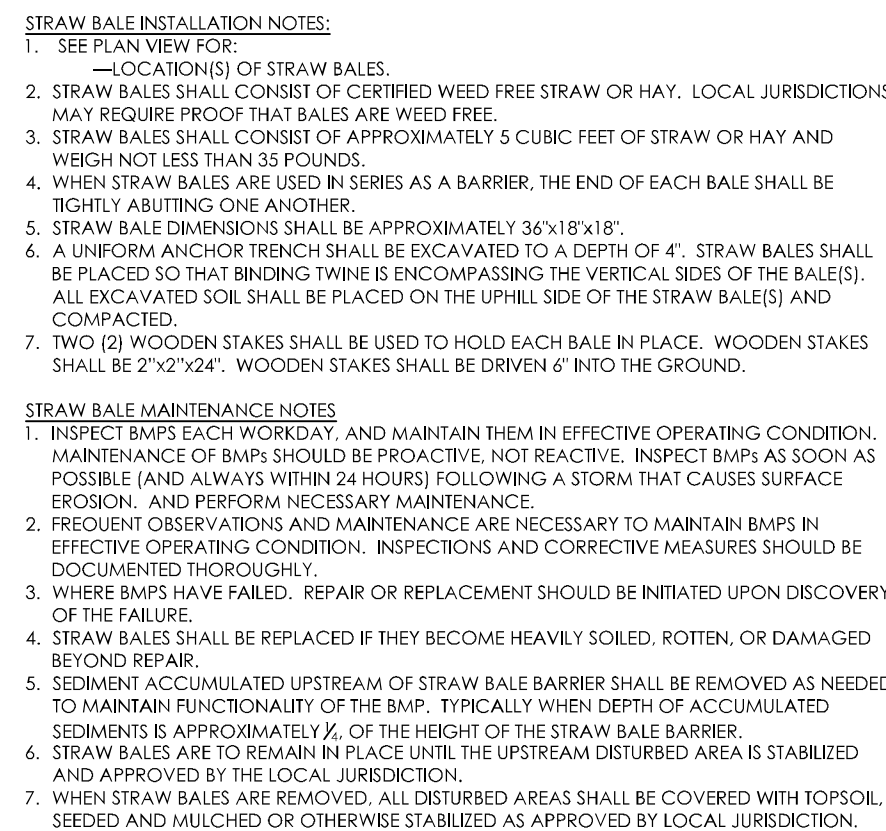
DESIGNED BY	CCC	12-31-2008
DRAWN BY	DRG	12-31-2008
CHECKED BY		
AS-BUILTS BY		
CHECKED BY		

MATIKA
SUBDIVISION FIL. NO. 1

Grading
& Erosion Control Plan

MVE PROJECT 61154
MVE DRAWING GEC-EC1

March 26, 2021
SHEET 2 OF 5



VEHICLE TRACKING NOTES

INSTALLATION REQUIREMENTS

1. ALL ENTRANCES TO THE CONSTRUCTION SITE ARE TO BE STABILIZED PRIOR TO CONSTRUCTION BEGINNING.
2. CONSTRUCTION ENTRANCES ARE TO BE BUILT WITH AN APRON TO ALLOW FOR TURNING TRAFFIC, BUT SHOULD NOT BE BUILT OVER EXISTING PAVEMENT EXCEPT FOR A SLIGHT OVERLAP.
3. AREAS TO BE STABILIZED ARE TO BE PROPERLY GRADED AND COMPACTED PRIOR TO LAYING DOWN GEOTEXTILE AND STONE.
4. CONSTRUCTION ROADS, PARKING AREAS, LOADING/UNLOADING ZONES, STORAGE AREAS, AND STAGING AREAS ARE TO BE STABILIZED.
5. CONSTRUCTION ROADS ARE TO BE BUILT TO CONFORM TO SITE GRADES, BUT SHOULD NOT HAVE STEEP SLOPES OR ROAD GRADATES THAT ARE EXCESSIVELY STEEP.

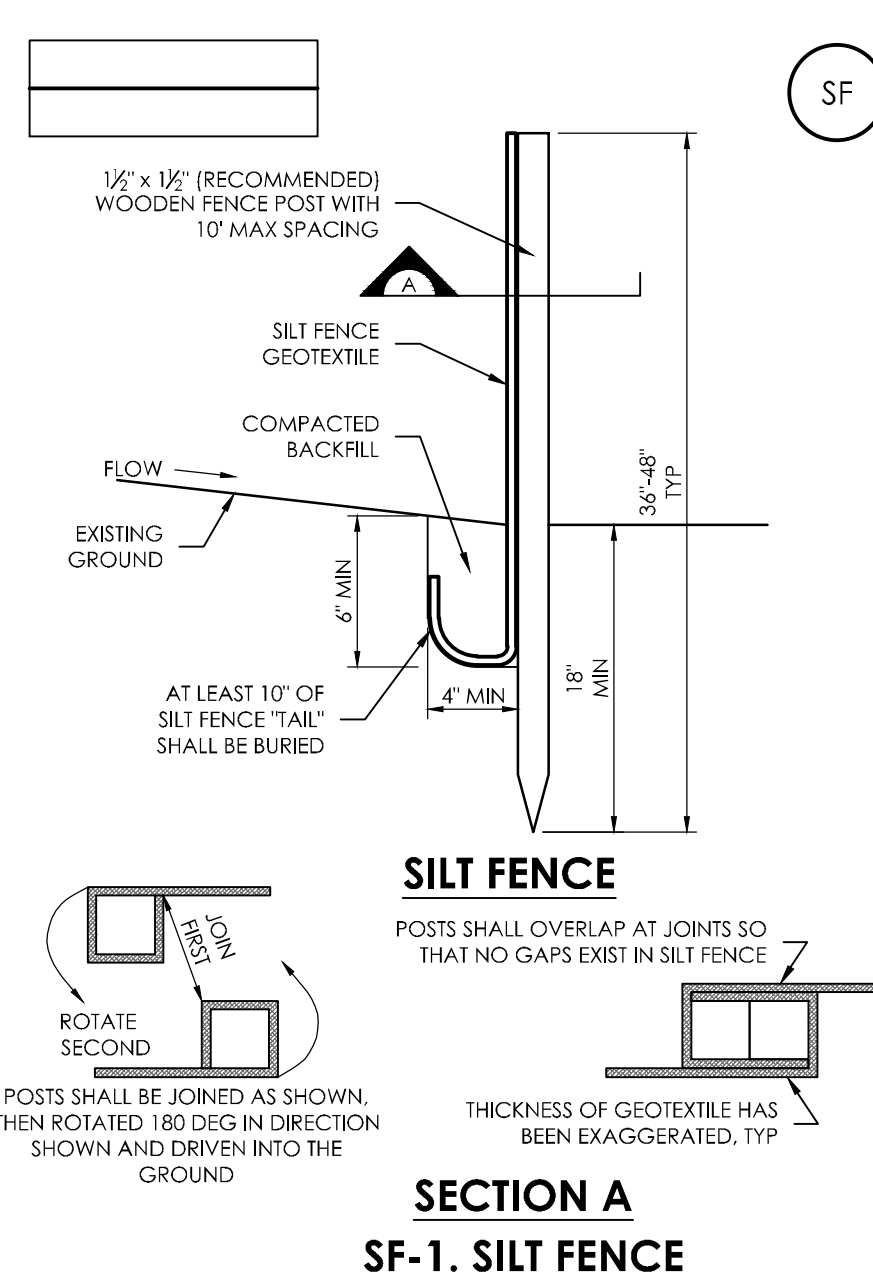
MAINTENANCE REQUIREMENTS

1. REGULAR INSPECTIONS ARE TO BE MADE OF ALL STABILIZED AREAS, ESPECIALLY AFTER STORM EVENTS.
2. STONES ARE TO BE REPLACED PERIODICALLY AND WHEN REPAIR IS NECESSARY.
3. SEDIMENT TRACKED ONTO PAVED ROADS IS TO BE REMOVED DAILY BY SHOVELING OR SWEEPING. SEDIMENT IS NOT TO BE WASHED DOWN STORM SEWER DRAINS.
4. STORM SEWER INLET PROTECTION IS TO BE IN PLACE, INSPECTED, AND CLEANED IF NECESSARY.
5. OTHER ASSOCIATED SEDIMENT CONTROL MEASURES ARE TO BE INSPECTED TO ENSURE GOOD WORKING CONDITION.

City of Colorado Springs
Stormwater Quality

Figure VT-2 Vehicle Tracking Application Examples

3.54

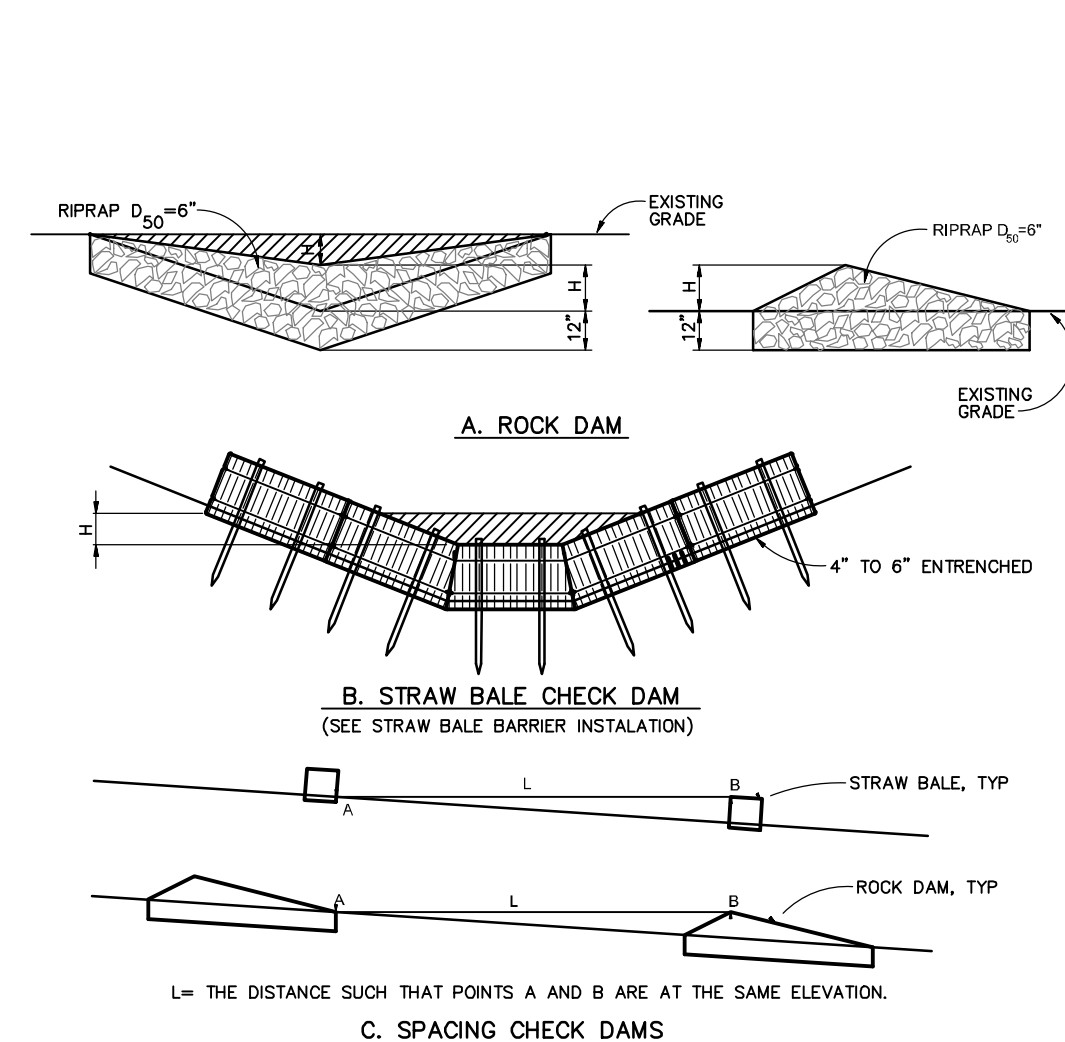


SECTION A
SF-1. SILT FENCE

- SILT FENCE INSTALLATION NOTES:**
1. SILT FENCE MUST BE PLACED AWAY FROM THE TOE OF THE SLOPE TO ALLOW FOR WATER PONDING. SILT FENCE AT THE TOE OR A SLOPE SHOULD BE INSTALLED AT A LOCATION AT LEAST SEVERAL FEET (2-5 FT) FROM THE TOE OF THE SLOPE TO ALLOW ROOM FOR PONDING AND DEPOSITION.
2. A UNIFORM 6" X 4" ANCHOR FENCE SHALL BE USED UNLESS OTHERWISE SPECIFIED OR SILT FENCE INSTALLATION DEVICE. NO ROAD GRADERS, BACKHOES, OR OTHER HEAVY EQUIPMENT SHALL BE EXCAVED.
3. COMPACT ANCHOR FENCE BY HAND WITH A "JUMPING JACK" OR BY WHEEL ROLLING. COMPACT SHALL BE SUCH THAT SILT FENCE IS NOT EASILY PULLED AWAY FROM THE ANCHORS.
4. SILT FENCE SHALL BE PULLED TIGHT AS IT IS ANCHORED TO THE STAKES. THERE SHOULD BE NO NOTICEABLE SAG BETWEEN STAKES AFTER IT HAS BEEN ANCHORED TO THE STAKES.
5. STAKES SHALL BE DRIVEN TO THE STAKES USING A HEAVY DUTY STAPLES OR NAILS WITH 1" HEADS. STAPLES AND NAILS SHOULD BE PLACED 3" ABOVE THE FABRIC DOWN THE STAKE.
6. AT THE END OF EACH ROW OF STAKES, THE SILT FENCE SHOULD BE TURNED PERPENDICULAR TO THE CONTOUR TO CREATE A "J-HOOK." THE "J-HOOK" EXTENDING PERPENDICULAR TO THE CONTOUR SHOULD BE OF SUFFICIENT LENGTH TO KEEP RUNOFF FROM FLOWING AROUND THE END OF THE SILT FENCE (TYPICALLY 10' - 20').
7. FENCE SHALL BE INSTALLED PRIOR TO ANY LAND DISTURBING ACTIVITIES.

SILT FENCE MAINTENANCE NOTES

- INSPECT BMPs EACH WORKDAY, AND MAINTAIN THEM IN EFFECTIVE OPERATING CONDITION. MAINTENANCE OF BMPs SHOULD BE COMPLETED AS SOON AS POSSIBLE (AND ALWAYS WITHIN 24 HOURS) FOLLOWING A STORM THAT CAUSES SURFACE EROSION, AND PERFORM NECESSARY MAINTENANCE.
3. FREQUENT OBSERVATIONS AND MAINTENANCE ARE NECESSARY TO MAINTAIN BMPs IN EFFECTIVE OPERATING CONDITION. INSPECTIONS AND MAINTENANCE SHOULD BE COMPLETED AS SOON AS POSSIBLE (AND ALWAYS WITHIN 24 HOURS) FOLLOWING A STORM THAT CAUSES SURFACE EROSION, AND PERFORM NECESSARY MAINTENANCE.
4. WHERE BMPs HAVE FAILED, REPAIR OR REPLACEMENT SHOULD BE INITIATED UPON DISCOVERY OF THE FAILURE.
5. SEDIMENT ACCUMULATED UPSTREAM OF THE SILT FENCE SHOULD BE REMOVED AS NEEDED TO MAINTAIN THE FUNCTIONALITY OF THE BMP.
6. WHEN A SILT FENCE OCCURS, THE FOLLOWING ACTIONS SHOULD BE TAKEN:
7. REPAIR OR REPLACE SILT FENCE WHEN THERE ARE SIGNS OF WEAR, SUCH AS SAGGING, TEARING, OR COLLAPSE.
8. BE ALERT TO ANY COLLAPSE OF THE SILT FENCE UNTIL THE SILT FENCE AREA IS STABILIZED AND APPROVED BY THE LOCAL JURISDICTION. ONCE REPLACED BY AN EQUIVALENT PERMEABLE SEDIMENT CONTROL BMP.
9. WHEN SILT IS REMOVED, ALL DISTURBED AREAS SHOULD BE COVERED WITH TOPSOIL, SEEDED AND MULCHED OR OTHERWISE STABILIZED.

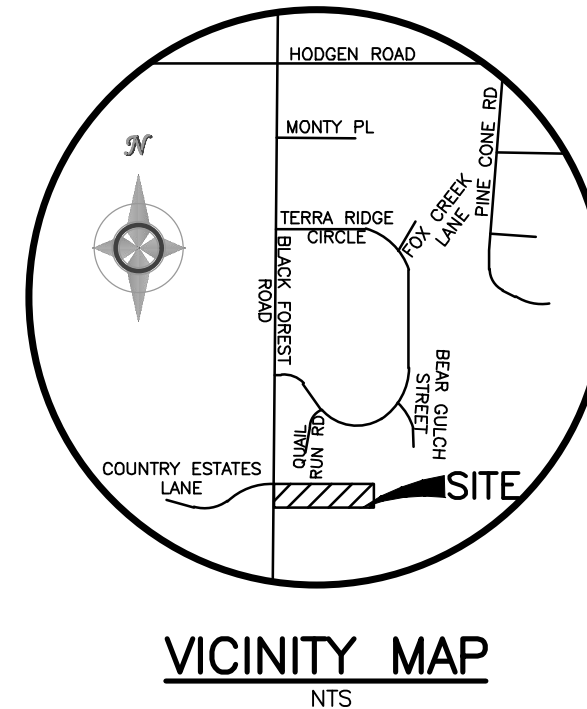
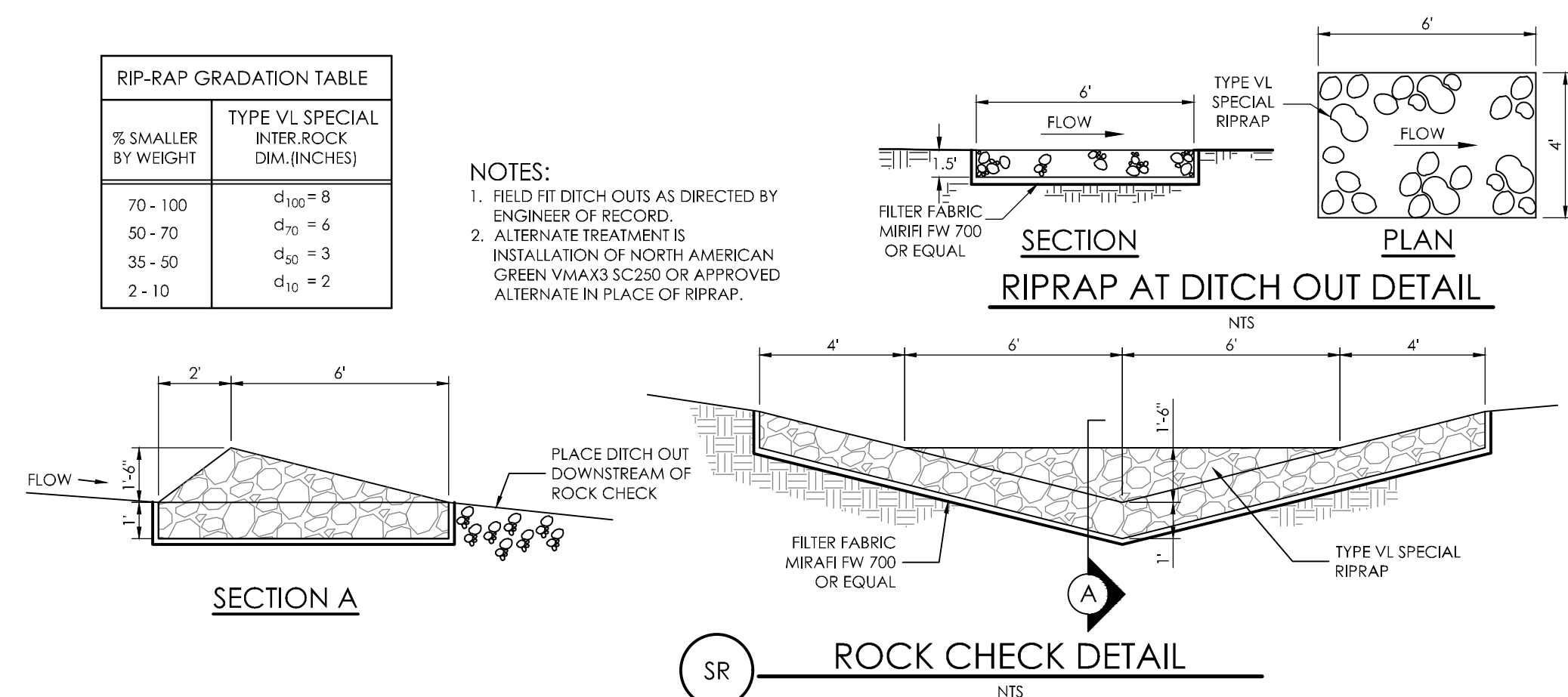
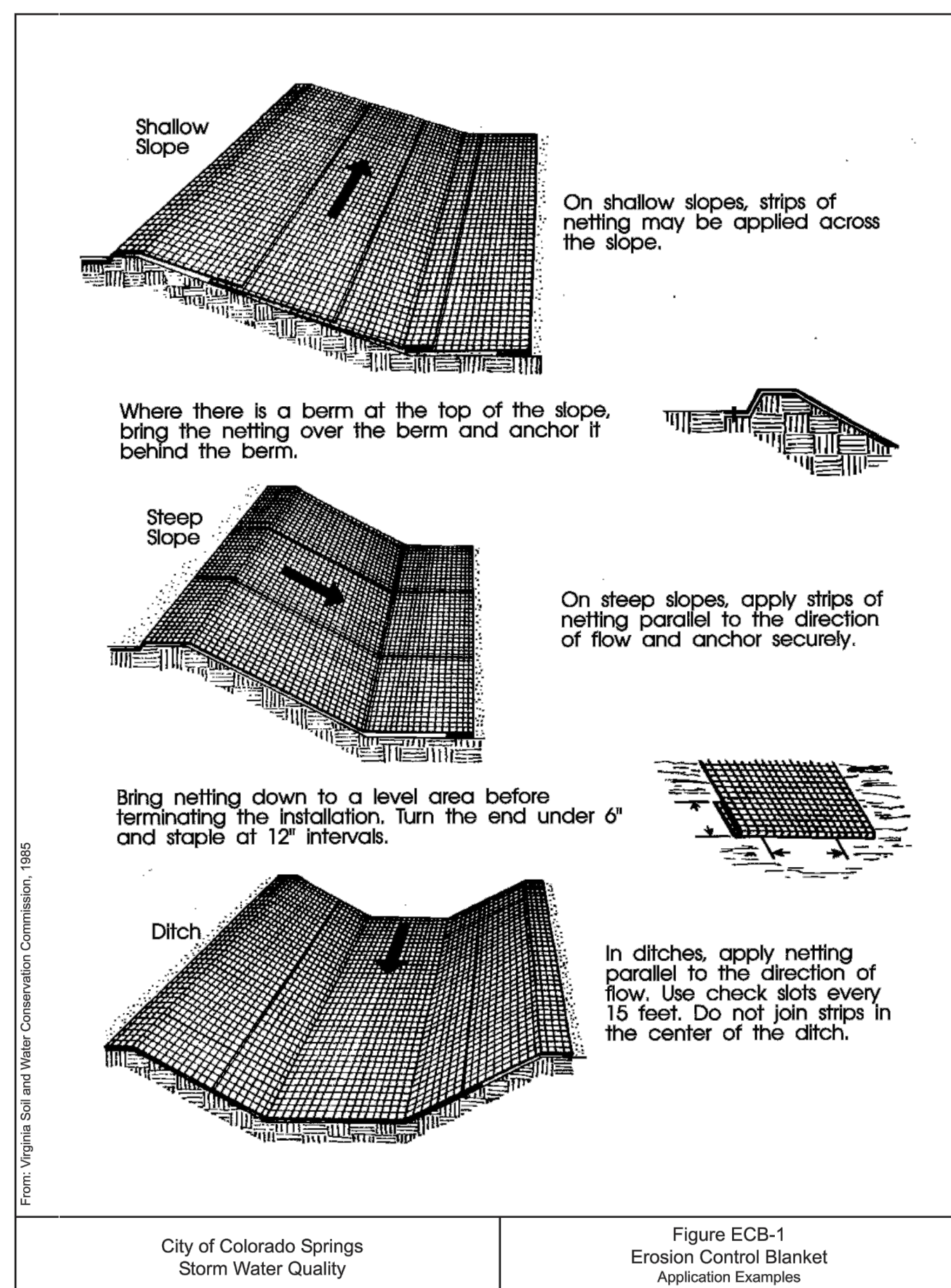
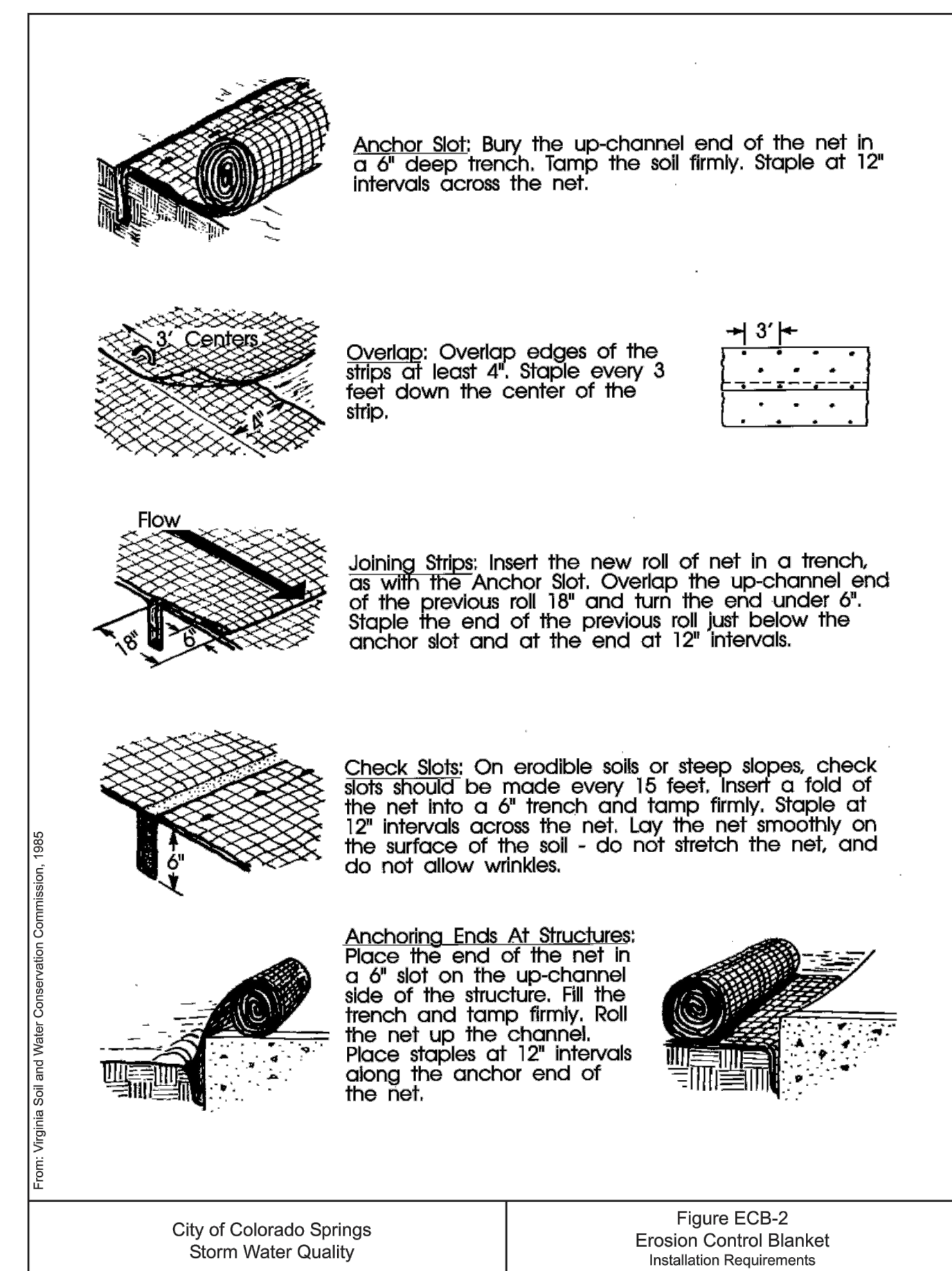
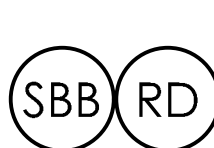


CHECK DAM NOTES

- | INSTALLATION REQUIREMENTS | MAINTENANCE REQUIREMENTS |
|---|---|
| 1. STAW BALES USED AS CHECK DAMS ARE TO MEET THE REQUIREMENTS STATED IN THE STAW BALE BARRIER DETAIL. | 1. REGULAR INSPECTIONS ARE TO BE MADE OF ALL CHECK DAMS, ESPECIALLY AFTER STORM EVENTS. |
| 2. THE "H" DIMENSION SHALL BE PROVIDED TO PROVIDE SUFFICIENT CONVEYANCE FOR FLOW OVER THE CREST. | 2. REPLACE STONE AS NECESSARY TO MAINTAIN THE CORRECT HEIGHT OF THE DAM. |
| | 3. ACCUMULATED SEDIMENT AND DEBRIS IS TO BE REMOVED FROM BEHIND THE DAMS AFTER EACH STORM OR WHEN 1/2 OF THE ORIGINAL HEIGHT OF THE DAM IS REACHED. |
| | 4. CHECK DAMS ARE TO REMAIN IN PLACE AND OPERATIONAL UNTIL THE DRAINAGE AREA BEHIND THEM IS PERMANENTLY STABILIZED. |
| | 5. WHERE CHECK DAMS ARE REMOVED THE CHANNEL BURNING OR |

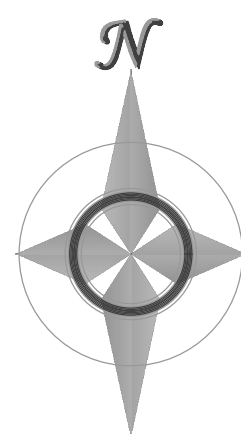
CHECK DAM DETAIL & MAINTENANCE REQUIREMENTS

NOT TO SCALE



BENCHMARK
THE BENCHMARK FOR THESE PLANS IS AN NGS MONUMENT DESIGNATION 4 BB RESET (PID K21181) LOCATED AT THE INTERSECTION OF HODGETON ROAD AND STATE HIGHWAY 83. ELEVATION = 7570.80 SFT (NAVD 88).

BASIS OF BEARINGS
BEARINGS REFERRED TO HEREIN ARE BASED ON THE WEST LINE OF THE SOUTHWEST QUARTER OF SECTION 32, TOWNSHIP 11 SOUTH, RANGE 65 WEST OF THE 6TH P.M., EL PASO COUNTY, COLORADO, ASSUMED TO BEAR N00°57'55"E.



MVE, INC.
ENGINEERS' SURVEYORS

1903 Telley Street, Suite 200 Colorado Springs CO 80909 719.635.5736

REVISIONS

DESIGNED BY CCC 12-31-2008
DRAWN BY DRG 12-31-2008
CHECKED BY _____
AS-BUILTS BY _____
CHECKED BY _____

MATIKA
SUBDIVISION FIL. NO. 1

Grading & Erosion Control Plan

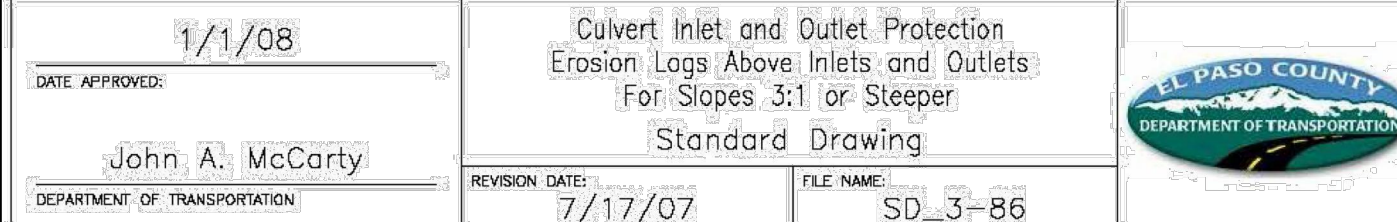
MVE PROJECT **61154**
MVE DRAWING **GEC-EC2**

March 26, 2021
SHEET 3 OF 5

EPC 7/12/2021

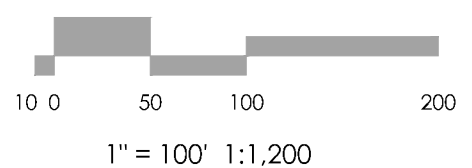
SCL

Figure MU-1 Mulching



TS/PS-4 Urban Drainage and Flood Control District
Urban Storm Drainage Criteria Manual Volume 3

November 2015
Urban Drainage and Flood Control District
Urban Storm Drainage Criteria Manual Volume 3
SCL-3



SCL

SCL-4
Urban Drainage and Flood Control District
Urban Storm Drainage Criteria Manual Volume 3
November 2015

November 2015
Urban Drainage and Flood Control District
Urban Storm Drainage Criteria Manual Volume 3
SCL-5

SCL-6
Urban Drainage and Flood Control District
November 2015

Urban Storm Drainage Criteria Manual Volume 3

March 26, 2021
SHEET 4 OF 5

1903 lalaray street, suite 200 colorado springs co 80909 719.635.5736

SSA

Stabilized Staging Area (SSA)

SM-6

SSA-1. STABILIZED STAGING AREA

STABILIZED STAGING AREA INSTALLATION NOTES

- SEE PLAN VIEW FOR:
 - LOCATION OF STAGING AREA(S).
 - CONTRACTOR MAY ADJUST LOCATION AND SIZE OF STAGING AREA WITH APPROVAL FROM THE LOCAL JURISDICTION.
- STABILIZED STAGING AREA SHOULD BE APPROPRIATE FOR THE NEEDS OF THE SITE. OVERSIZING RESULTS IN A LARGER AREA TO STABILIZE FOLLOWING CONSTRUCTION.
- STAGING AREA SHALL BE STABILIZED PRIOR TO OTHER OPERATIONS ON THE SITE.
- THE STABILIZED STAGING AREA SHALL CONSIST OF A MINIMUM 3" THICK GRANULAR MATERIAL.
- UNLESS OTHERWISE SPECIFIED BY LOCAL JURISDICTION, ROCK SHALL CONSIST OF DOT SECT. #703, A4SHD #3 COARSE AGGREGATE OR 6" (MINUS) ROCK.
- ADDITIONAL PERIMETER BMPs MAY BE REQUIRED INCLUDING BUT NOT LIMITED TO SILT FENCE AND CONSTRUCTION FENCING.

STABILIZED STAGING AREA MAINTENANCE NOTES

- INSPECT BMPs EACH WORKDAY, AND MAINTAIN THEM IN EFFECTIVE OPERATING CONDITION. MAINTENANCE OF BMPs SHOULD BE PROACTIVE, NOT REACTIVE. INSPECT BMPs AS SOON AS POSSIBLE (AND ALWAYS WITHIN 24 HOURS) FOLLOWING A STORM THAT CAUSES SURFACE EROSION, AND PERFORM NECESSARY MAINTENANCE.
- FREQUENT OBSERVATIONS AND MAINTENANCE ARE NECESSARY TO MAINTAIN BMPs IN EFFECTIVE OPERATING CONDITION. INSPECTIONS AND CORRECTIVE MEASURES SHOULD BE DOCUMENTED THOROUGHLY.
- WHERE BMPs HAVE FAILED, REPAIR OR REPLACEMENT SHOULD BE INITIATED UPON DISCOVERY OF THE FAILURE.
- ROCK SHALL BE REAPPLIED OR REGRADED AS NECESSARY IF RUTTING OCCURS OR UNDERLYING SUBGRADE BECOMES EXPOSED.

SSA

Stabilized Staging Area (SSA)

SM-6

STABILIZED STAGING AREA MAINTENANCE NOTES

- STABILIZED STAGING AREA SHALL BE ENLARGED IF NECESSARY TO CONTAIN PARKING, STORAGE, AND UNLOADING/LOADING OPERATIONS.
- THE STABILIZED STAGING AREA SHALL BE REMOVED AT THE END OF CONSTRUCTION. THE GRANULAR MATERIAL SHALL BE REMOVED OR, IF APPROVED BY THE LOCAL JURISDICTION, USED ON SITE, AND THE AREA COVERED WITH TOPSOIL, SEEDED AND MULCHED OR OTHERWISE STABILIZED IN A MANNER APPROVED BY LOCAL JURISDICTION.

NOTE: MANY MUNICIPALITIES PROHIBIT THE USE OF RECYCLED CONCRETE AS GRANULAR MATERIAL FOR STABILIZED STAGING AREAS DUE TO DIFFICULTIES WITH RE-ESTABLISHMENT OF VEGETATION IN AREAS WHERE RECYCLED CONCRETE WAS PLACED.

NOTE: MANY JURISDICTIONS HAVE BMP DETAILS THAT VARY FROM UDFCD STANDARD DETAILS. CONSULT WITH LOCAL JURISDICTIONS AS TO WHICH DETAIL SHOULD BE USED WHEN DIFFERENCES ARE NOTED.

(DETAILS ADAPTED FROM DOUGLAS COUNTY, COLORADO, NOT AVAILABLE IN AUTOCAD)

SP

Stockpile Management (SP)

MM-2

SP-1. STOCKPILE PROTECTION

STOCKPILE PROTECTION INSTALLATION NOTES

- SEE PLAN VIEW FOR:
 - LOCATION OF STOCKPILES.
 - TYPE OF STOCKPILE PROTECTION.
- INSTALL PERIMETER CONTROLS IN ACCORDANCE WITH THEIR RESPECTIVE DESIGN DETAILS. SILT FENCE IS SHOWN IN THE STOCKPILE PROTECTION DETAILS; HOWEVER, OTHER TYPES OF PERIMETER CONTROLS INCLUDING SEDIMENT CONTROL LOGS OR ROCK SOCKS MAY BE SUITABLE IN SOME CIRCUMSTANCES. CONSIDERATIONS FOR DETERMINING THE APPROPRIATE TYPE OF PERIMETER CONTROL FOR A STOCKPILE INCLUDE WHETHER THE STOCKPILE IS LOCATED ON A PERVIOUS OR IMPERVIOUS SURFACE, THE RELATIVE HEIGHTS OF THE PERIMETER CONTROL, AND STOCKPILE, THE ABILITY OF THE PERIMETER CONTROL TO CONTAIN THE STOCKPILE WITHOUT FAILING IN THE EVENT THAT MATERIAL FROM THE STOCKPILE SHIFTS OR SLUMPS AGAINST THE PERIMETER, AND OTHER FACTORS.
- STABILIZE THE STOCKPILE SURFACE WITH SURFACE ROUGHENING, TEMPORARY SEEDING AND MULCHING, EROSION CONTROL BLANKETS, OR SOIL BINDERS. SOILS STOCKPILED FOR AN EXTENDED PERIOD (TYPICALLY FOR MORE THAN 60 DAYS) SHOULD BE SEEDED AND MULCHED WITH A TEMPORARY GRASS COVER ONCE THE STOCKPILE IS PLACED (TYPICALLY WITHIN 14 DAYS). USE OF MULCH ONLY OR A SOIL BINDER IS ACCEPTABLE IF THE STOCKPILE WILL BE IN PLACE FOR A MORE LIMITED TIME PERIOD (TYPICALLY 30-60 DAYS).
- FOR TEMPORARY STOCKPILES ON THE INTERIOR PORTION OF A CONSTRUCTION SITE, WHERE OTHER DOWNGRADIENT CONTROLS, INCLUDING PERIMETER CONTROL, ARE IN PLACE, STOCKPILE PERIMETER CONTROLS MAY NOT BE REQUIRED.

November 2010

Urban Drainage and Flood Control District
Urban Storm Drainage Criteria Manual Volume 3

SSA-3

SSA-4

Urban Drainage and Flood Control District
Urban Storm Drainage Criteria Manual Volume 3

November 2010

November 2010

Urban Drainage and Flood Control District
Urban Storm Drainage Criteria Manual Volume 3

SP-3

SP

Stockpile Management (SM)

MM-2

STOCKPILE PROTECTION MAINTENANCE NOTES

- INSPECT BMPs EACH WORKDAY, AND MAINTAIN THEM IN EFFECTIVE OPERATING CONDITION. MAINTENANCE OF BMPs SHOULD BE PROACTIVE, NOT REACTIVE. INSPECT BMPs AS SOON AS POSSIBLE (AND ALWAYS WITHIN 24 HOURS) FOLLOWING A STORM THAT CAUSES SURFACE EROSION, AND PERFORM NECESSARY MAINTENANCE.
- FREQUENT OBSERVATIONS AND MAINTENANCE ARE NECESSARY TO MAINTAIN BMPs IN EFFECTIVE OPERATING CONDITION. INSPECTIONS AND CORRECTIVE MEASURES SHOULD BE DOCUMENTED THOROUGHLY.
- WHERE BMPs HAVE FAILED, REPAIR OR REPLACEMENT SHOULD BE INITIATED UPON DISCOVERY OF THE FAILURE.

STOCKPILE PROTECTION MAINTENANCE NOTES

- IF PERIMETER PROTECTION MUST BE MOVED TO ACCESS SOIL STOCKPILE, REPLACE PERIMETER CONTROLS BY THE END OF THE WORKDAY.
- STOCKPILE PERIMETER CONTROLS CAN BE REMOVED ONCE ALL THE MATERIAL FROM THE STOCKPILE HAS BEEN USED.

(DETAILS ADAPTED FROM PARKER, COLORADO, NOT AVAILABLE IN AUTOCAD)

NOTE: MANY JURISDICTIONS HAVE BMP DETAILS THAT VARY FROM UDFCD STANDARD DETAILS. CONSULT WITH LOCAL JURISDICTIONS AS TO WHICH DETAIL SHOULD BE USED WHEN DIFFERENCES ARE NOTED.

SR

Surface Roughening (SR)

EC-1

SR-1. SURFACE ROUGHENING FOR STEEP SLOPES (3:1 OR STEEPER)

SR-2. SURFACE ROUGHENING FOR LOW SLOPES (LESS THAN 3:1)

SR-4

Urban Drainage and Flood Control District
Urban Storm Drainage Criteria Manual Volume 3

November 2010

SR-3

Urban Drainage and Flood Control District
Urban Storm Drainage Criteria Manual Volume 3

November 2010

SR-4

Urban Drainage and Flood Control District
Urban Storm Drainage Criteria Manual Volume 3

November 2010

SR

Surface Roughening (SR)

EC-1

SURFACE ROUGHENING INSTALLATION NOTES

- SEE PLAN VIEW FOR:
 - LOCATION(S) OF SURFACE ROUGHENING.
- SURFACE ROUGHENING SHALL BE PROVIDED PROMPTLY AFTER COMPLETION OF FINISHED GRADING (FOR AREAS NOT RECEIVING TOPSOIL) OR PRIOR TO TOPSOIL PLACEMENT OR ANY FORECASTED RAIN EVENT.
- AREAS WHERE BUILDING FOUNDATIONS, PAVEMENT, OR SOD WILL BE PLACED WITHOUT DELAY IN THE CONSTRUCTION SEQUENCE, SURFACE ROUGHENING IS NOT REQUIRED.
- DISTURBED SURFACES SHALL BE ROUGHENED USING RIPPING OR TILLING EQUIPMENT ON THE CONTOUR OR TRACKING UP AND DOWN A SLOPE USING EQUIPMENT TREADS.
- A FARMING DISK SHALL NOT BE USED FOR SURFACE ROUGHENING.

SURFACE ROUGHENING MAINTENANCE NOTES

- INSPECT BMPs EACH WORKDAY, AND MAINTAIN THEM IN EFFECTIVE OPERATING CONDITION. MAINTENANCE OF BMPs SHOULD BE PROACTIVE, NOT REACTIVE. INSPECT BMPs AS SOON AS POSSIBLE (AND ALWAYS WITHIN 24 HOURS) FOLLOWING A STORM THAT CAUSES SURFACE EROSION, AND PERFORM NECESSARY MAINTENANCE.
- FREQUENT OBSERVATIONS AND MAINTENANCE ARE NECESSARY TO MAINTAIN BMPs IN EFFECTIVE OPERATING CONDITION. INSPECTIONS AND CORRECTIVE MEASURES SHOULD BE DOCUMENTED THOROUGHLY.
- WHERE BMPs HAVE FAILED, REPAIR OR REPLACE UPON DISCOVERY OF THE FAILURE.
- VEHICLES AND EQUIPMENT SHALL NOT BE DRIVEN OVER AREAS THAT HAVE BEEN SURFACE ROUGHENED.
- IN NON-TURF GRASS FINISHED AREAS, SEEDING AND MULCHING SHALL TAKE PLACE DIRECTLY OVER SURFACE ROUGHENED AREAS WITHOUT FIRST SMOOTHING OUT THE SURFACE.
- IN AREAS NOT SEEDED AND MULCHED AFTER SURFACE ROUGHENING, SURFACES SHALL BE RE-ROUGHENED AS NECESSARY TO MAINTAIN GROOVE DEPTH AND SMOOTH OVER RILL EROSION.

(DETAILS ADAPTED FROM TOWN OF PARKER, COLORADO, NOT AVAILABLE IN AUTOCAD)

NOTE: MANY JURISDICTIONS HAVE BMP DETAILS THAT VARY FROM UDFCD STANDARD DETAILS. CONSULT WITH LOCAL JURISDICTIONS AS TO WHICH DETAIL SHOULD BE USED WHEN DIFFERENCES ARE NOTED.

VICINITY MAP
NTS

BENCHMARK
THE BENCHMARK FOR THESE PLANS IS AN NGS MONUMENT DESIGNATION 4 88 RESET (PID KK2118) LOCATED AT THE INTERSECTION OF HORGEN ROAD AND STATE HIGHWAY 83. ELEVATION = 7570.80 SFT (NAVD 88).

BASIS OF BEARINGS
BEARINGS REFERRED TO HEREIN ARE BASED ON THE WEST LINE OF THE SOUTHWEST QUARTER OF SECTION 52, TOWNSHIP 11 SOUTH, RANGE 65 WEST OF THE 6TH P.M., EL PASO COUNTY, COLORADO, ASSUMED TO BEAR N00°57'55"E.

1" = 100' 1:1,200

REVISIONS

DESIGNED BY CCC 12-31-2008
DRAWN BY DRG 12-31-2008
CHECKED BY _____
AS-BUILTS BY _____
CHECKED BY _____

MATIKA
SUBDIVISION FIL. NO. 1

Grading
& Erosion Control
Plan

MVE PROJECT 61154
MVE DRAWING GEC-EC4

March 26, 2021
SHEET 5 OF 5

EPC 7/12/2021