

Verify design details based on entire contributing area

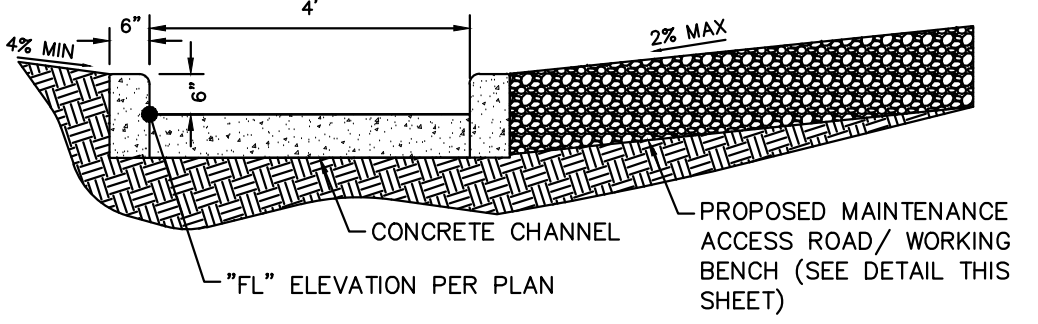
show a plan view of the pond

Table 506-2

Pay Item	Stone Size (Inches)	Percent of Material Smaller Than Typical Stone <sup>a</sup>	Typical Stone Dimensions <sup>b</sup> (Inches)	Typical Stone Weight <sup>c</sup> (Pounds)
Riprap	6	70-100	12	85
		50-70	9	35
		35-50	6	10
Riprap	9	70-100	15	160
		50-70	12	85
		35-50	9	35
Riprap	12	70-100	21	440
		50-70	18	275
		35-50	12	85
Riprap	18	100	30	1280
		50-70	24	650
		35-50	18	275
Riprap	24	100	42	3500
		50-70	33	1700
		35-50	24	650

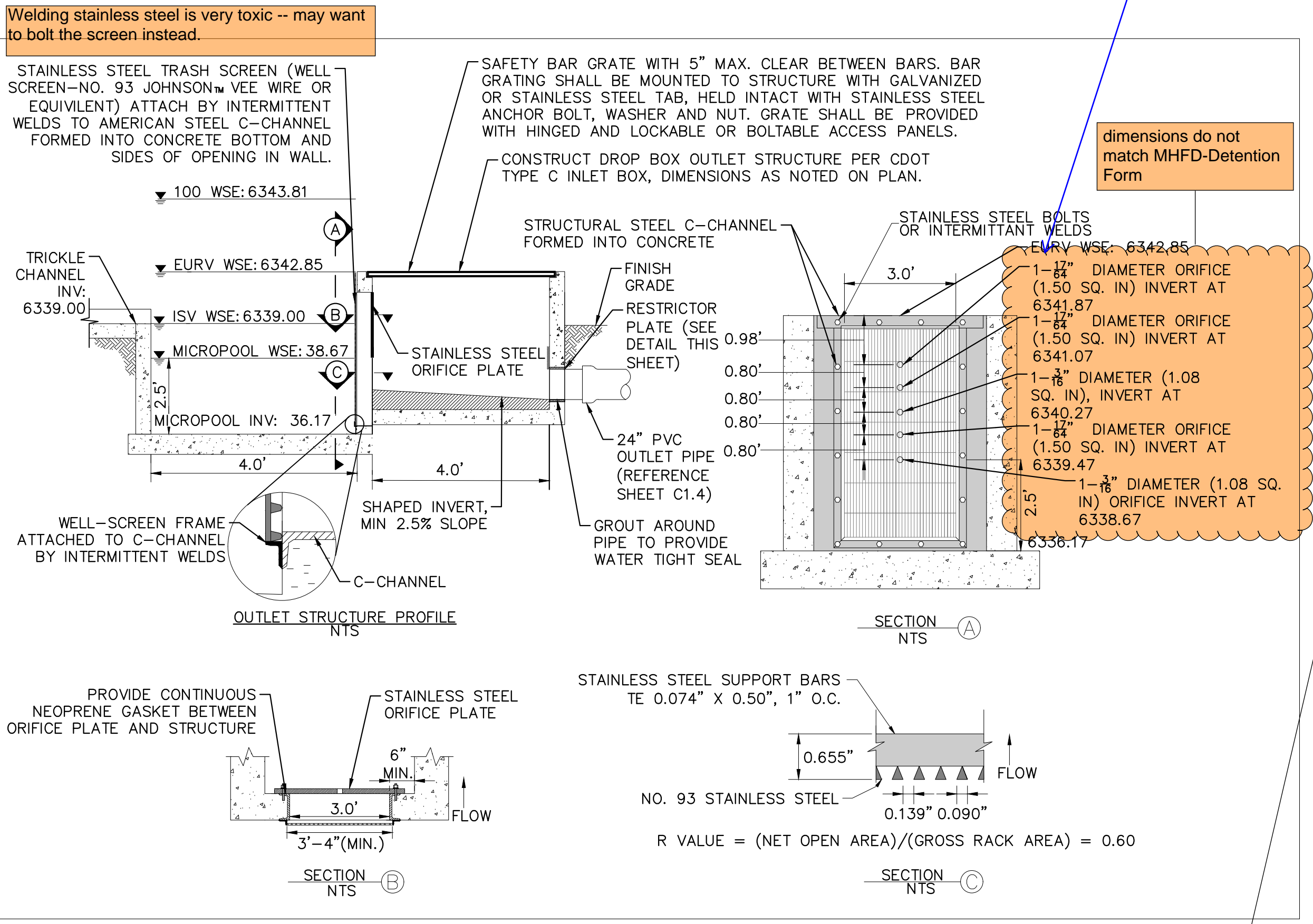
<sup>a</sup>d50 = nominal stone size  
<sup>b</sup>based on typical rock mass  
<sup>c</sup>equivalent spherical diameter  
<sup>d</sup>based on a specific gravity = 2.5

Nominal stone size and total thickness of the riprap shall be as shown on the plans.



MAINTENANCE ROAD CROSS SECTION N.T.S.

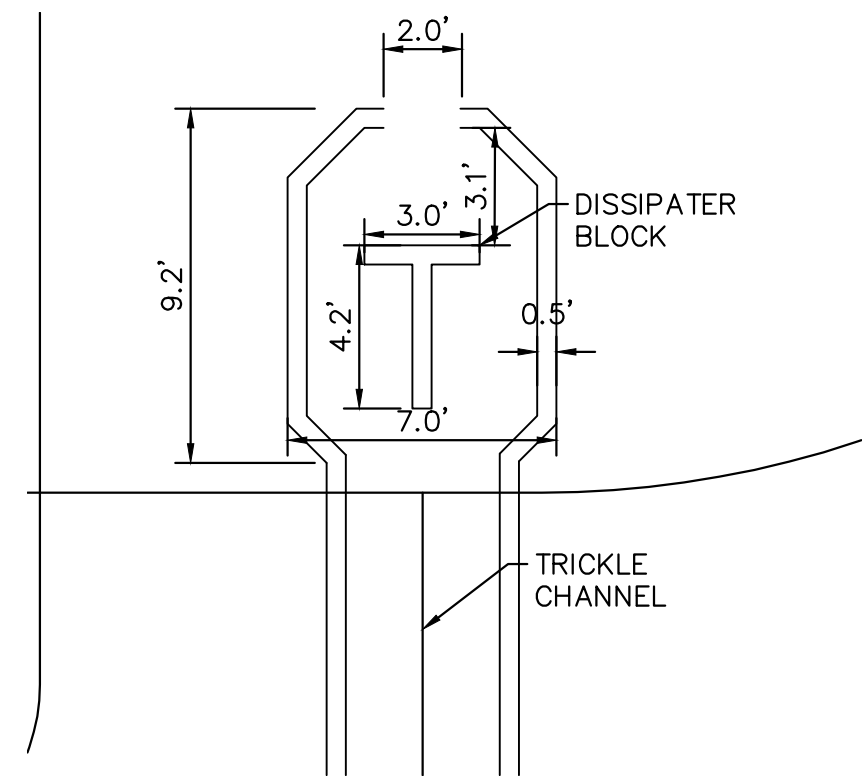
This is the same detail as its referenced detail.



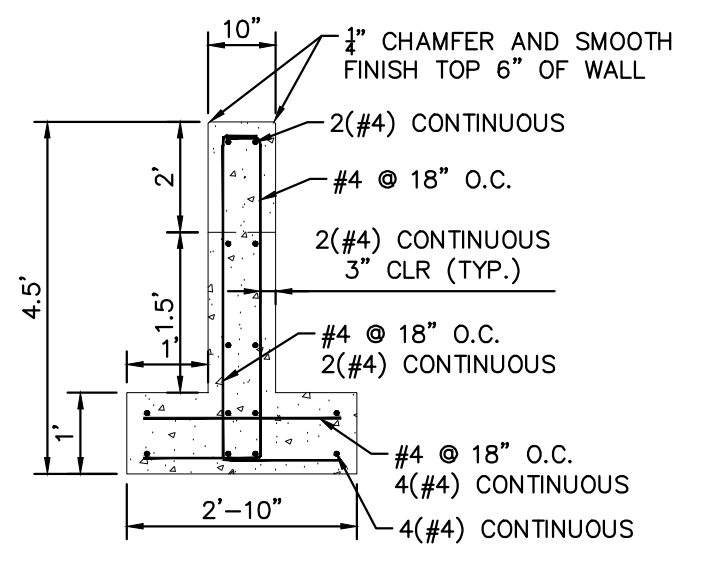
OUTLET STRUCTURE PROFILE N.T.S.

dimensions do not match MHFD-Detention Form

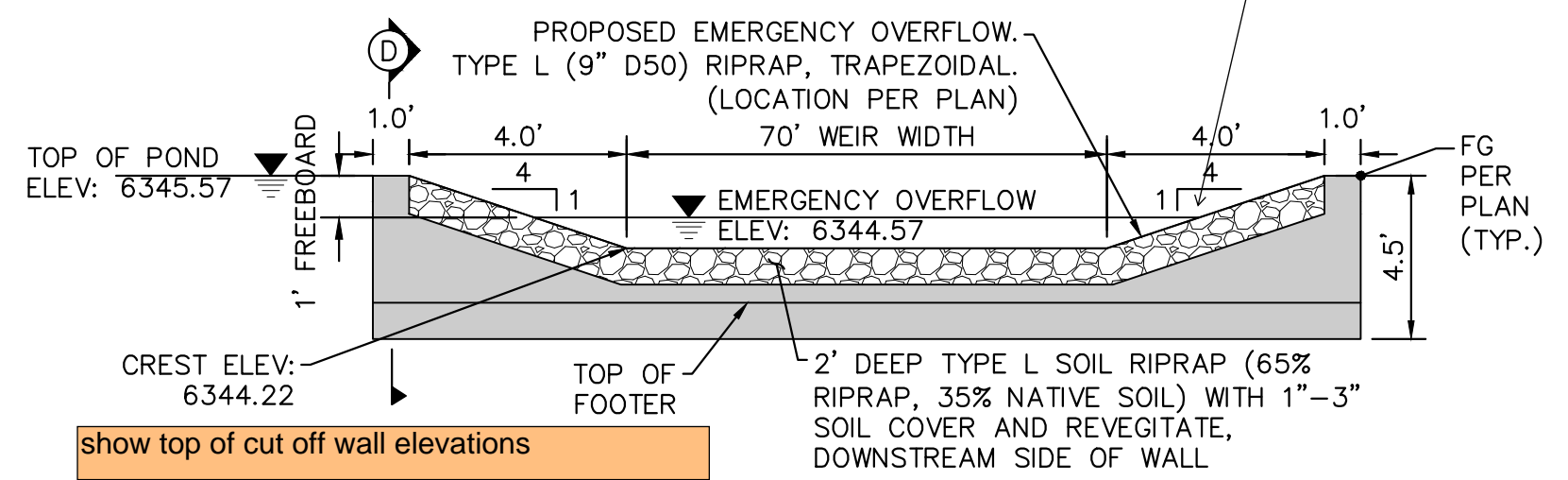
Provide riprap gradation table and note that CDOT Section 506 Requirements apply



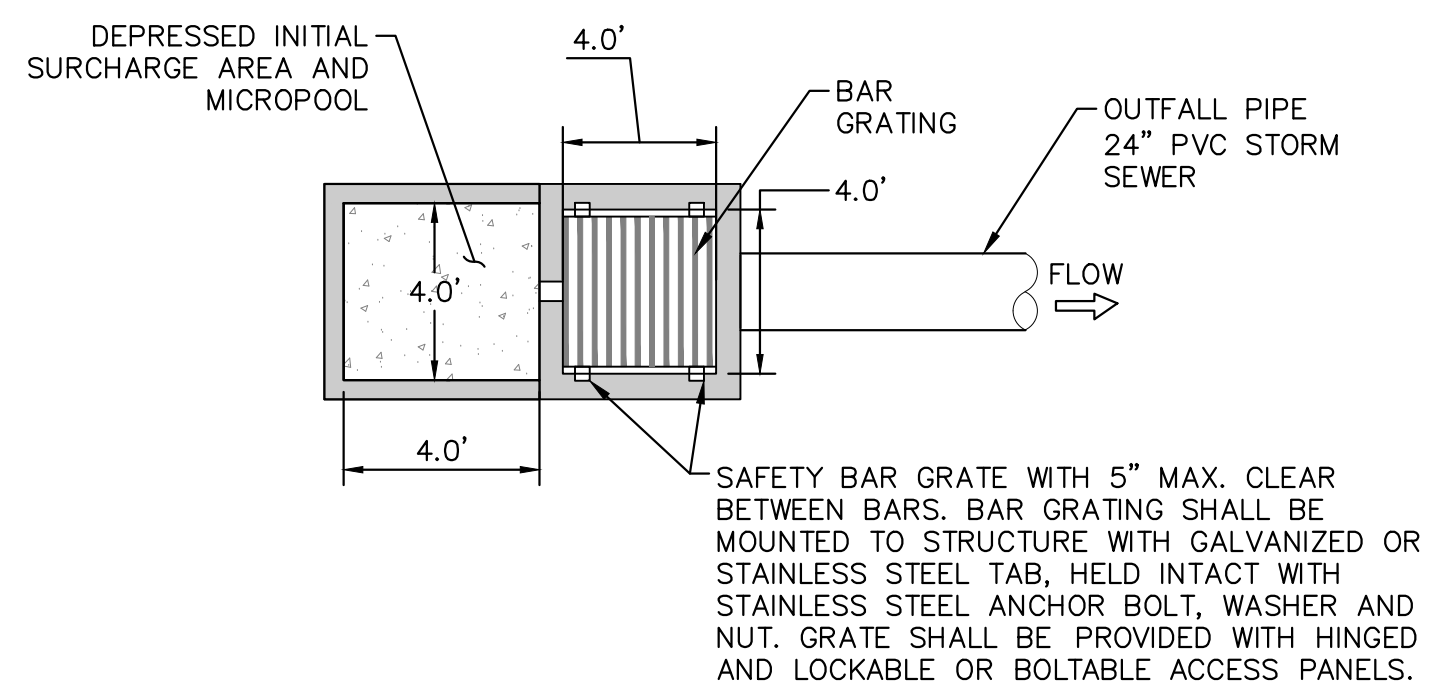
FOREBAY WALL PLAN VIEW DETAIL N.T.S.



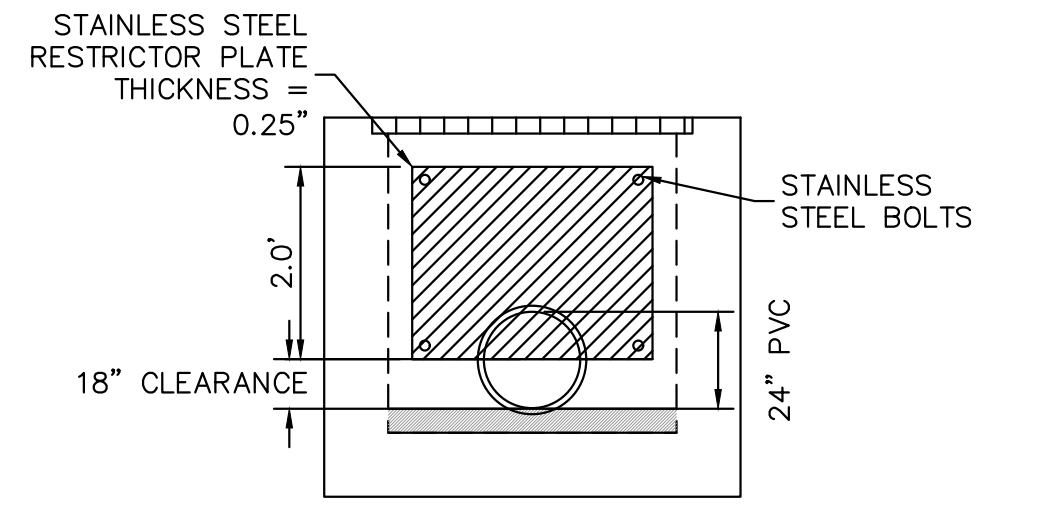
EMERGENCY OVERFLOW CUT-OFF WALL SECTION D N.T.S.



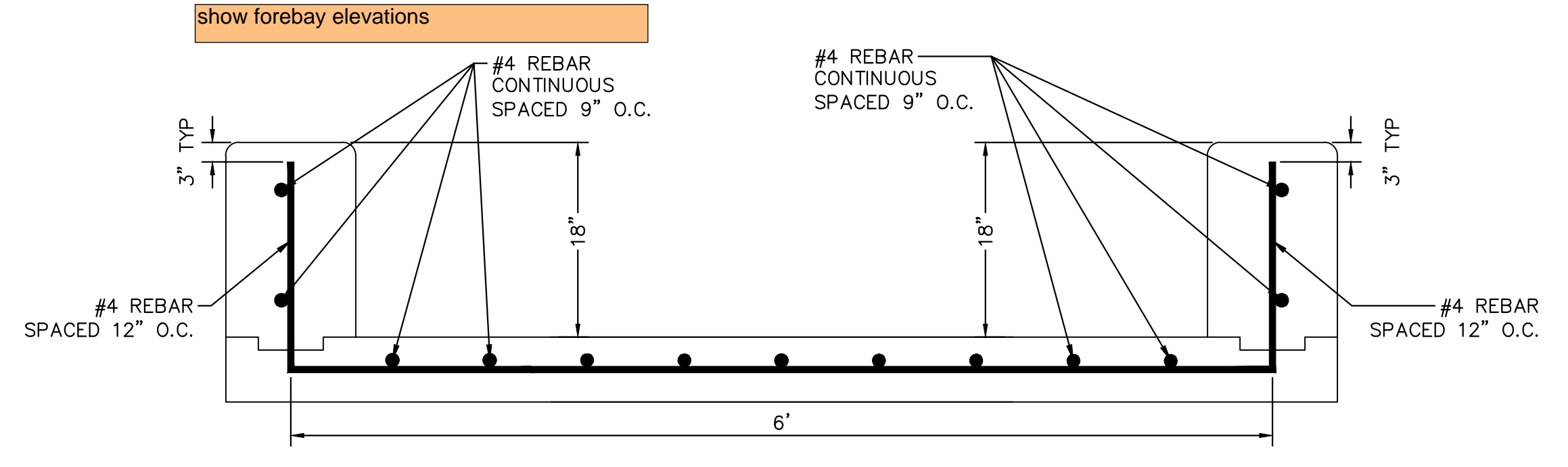
EMERGENCY OVERFLOW CUT-OFF WALL PROFILE N.T.S.



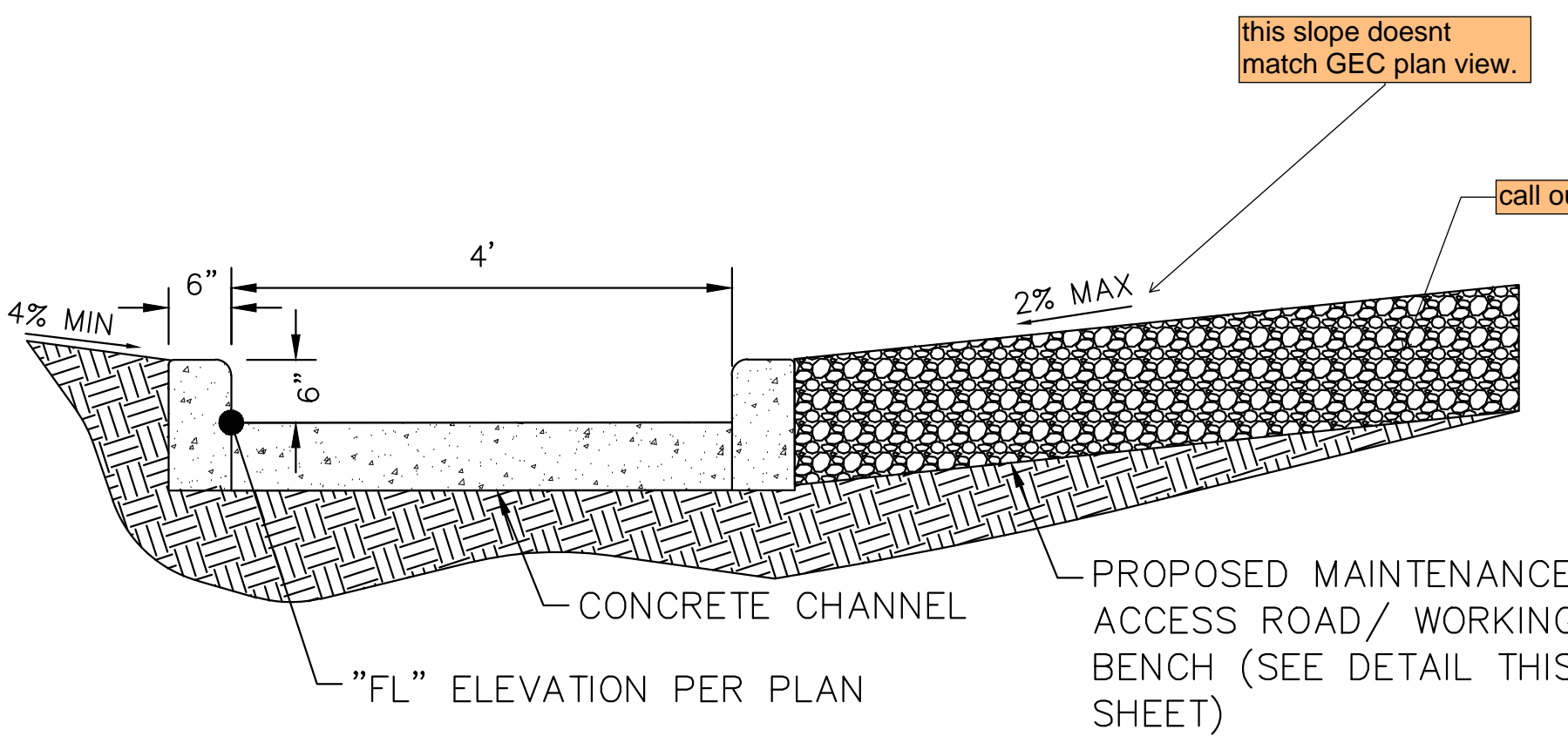
OUTLET STRUCTURE PLAN VIEW DETAIL N.T.S.



100-YEAR FLOW RESTRICTOR DETAIL N.T.S.



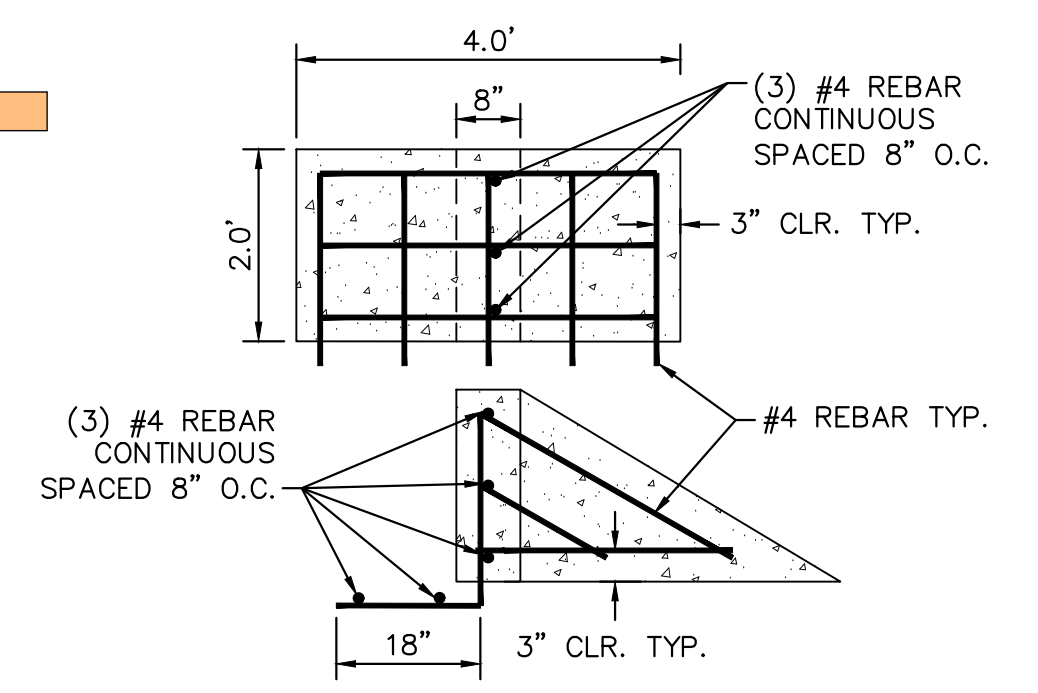
FOREBAY WALL SECTION E N.T.S.



TRICKLE CHANNEL- CROSS SECTION DETAIL N.T.S.

this slope doesnt match GEC plan view.

call out material



FOREBAY DISSIPATER DETAIL N.T.S.

**Kimley»Horn**  
 2021 KIMLEY-HORN AND ASSOCIATES, INC.  
 2 North Nevada Avenue Suite 300  
 Colorado Springs, Colorado 80903 (719) 453-0180

DESIGNED BY: E.J.G.  
 DRAWN BY: J.A.R.  
 CHECKED BY: E.J.G.  
 DATE: 2/5/21

WATERMARK AT AKERS  
 EL PASO COUNTY, COLORADO  
 CONSTRUCTION DRAWING PLANS  
**POND DETAILS**

PRELIMINARY  
 FOR REVIEW ONLY  
 NOT FOR CONSTRUCTION  
**Kimley»Horn**  
 Kimley-Horn and Associates, Inc.

PROJECT NO.  
 096302009

SHEET  
**C3.22**

K:\DEN\_Civil\096302009\_Akers Drive\CADD\PlanSheets\CD\096302009--BMP.dwg Roberts, Jared 2/8/2021 3:07 PM