



Planning and Community Development
 2880 International Cir. Suite 110
 Colorado Springs, CO 80910



FIRST-CLASS



US POSTAGE (M) PITNEY BOWES
 ZIP 80910 \$ **000.69**⁰⁰
 02 7H
 0001332609 OCT 02 2024

RECEIVED
 OCT 15 2024
 By *KH*

6123004046
 DALANCO LLC
 PO BOX 1488
 MONUMENT, CO 80132

NOTICE OF

NIXIE 668 SE 1 7216/89/24

RETURN TO SENDER
 NOT DELIVERABLE AS ADDRESSED
 UNABLE TO FORWARD

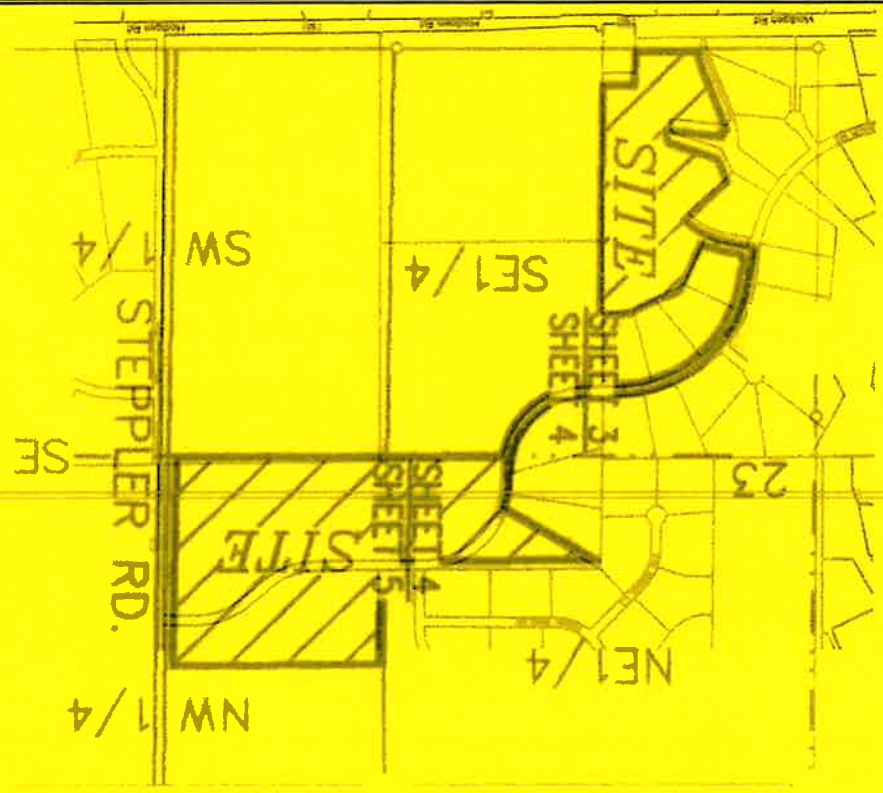
BC: 80910314835 *1468-03595-09-29

80910>3148

COPYRIGHT 2022 by the Board of County Commissioners, El Paso County, Colorado. All rights reserved. No part of this document or data contained hereon may be reproduced, used to prepare derivative products, or distributed without the specific written approval of the Board of County Commissioners, El Paso County, Colorado. This document was prepared from the best data available at the time of printing. El Paso County, Colorado, makes no claim as to the completeness or accuracy of the data contained herein.



Please report any parcel discrepancies to:
 El Paso County Assessor
 1675 W. Garden of the Gods Rd.
 Colorado Springs, CO 80907
 (719) 520-6600



EL PASO COUNTY
PARCEL INFORMATION
 FILE NO. SF249
 PARCEL: 6123007024, 6124004003, 6124005001, 6123004048
 OWNER NAME: Hodgen Settlers Ranch LLC
 ADDRESS: P.O. Box 1488 Monument, CO 80132