

GENERAL FLOOR PLAN NOTES

- REFERENCE DOOR SCHEDULE FOR ALL DOOR TYPES, HARDWARE AND ETC.
- EXIT DOORS SHALL SWING IN THE DIRECTION OF EXIT TRAVEL WHEN SERVING ANY HAZARDOUS AREA OR WHEN SERVING AN OCCUPANT LOAD OF 50 OR MORE.
- ALL GLAZING IN DOORS OR WITHIN TWENTY FOUR INCHES (24") OF DOORS AND WITHIN EIGHTEEN INCHES (18") OF WALKING SURFACE SHALL BE TEMPERED.
- PROVIDE CONTROL JOINTS AT A MIN. OF 30'-0" AT ALL GYP. BD. WALLS.
- PROVIDE TRANSITION STRIPS AT ALL FLOOR MATERIAL CHANGES.
- FINISH FLOOR ELEVATIONS ARE TO TOP OF CONCRETE UNLESS NOTED OTHERWISE. FLOOR SLABS ARE TO BE LEVEL WITHIN CLASS B TOLERANCES. REFER TO CIVIL & STRUCTURAL DRAWINGS FOR ADDITIONAL INFO.
- REFER TO PLUMBING PLANS FOR HOSE BIB LOCATIONS AND LANDSCAPE METER/STUB LOCATIONS
- DOOR OPENINGS IN PARTITIONS NOT DIMENSIONED ARE TO BE LOCATED WITHIN 4" OF ADJACENT PERPENDICULAR PARTITION. PROVIDE 18" CLEAR AT STRIKE SIDE AND 12" ON PUSH SIDE OF DOOR OPENING.
- ALL INTERIOR WALLS AND PARTITIONS SHALL BE TAPED AND SANDED SMOOTH TO RECEIVE PAINT OR WALL FINISH MATERIAL.
- FURNISH AND INSTALL 16 GAUGE METAL STRAP FOR WALL BACKING AT DOOR STOPS, HANGING WALL, EQUIPMENT, ETC. VERIFY EXACT BACKING LOCATIONS PRIOR TO INSTALLATION.
- PROVIDE AND LOCATE ACCESS DOORS AND PANELS IN THE WALL AS REQUIRED TO PROVIDE ACCESS TO FIRE SFRINKLER, PLUMBING AND ELECTRICAL WORK.
- ALL PLUMBING CLEANOUTS SHALL BE INSTALLED WHERE READILY ACCESSIBLE. THE CONTRACTOR SHALL COORDINATE ALL CLEAN-OUT LOCATIONS WITH EQUIPMENT. PROPER CAPS MUST BE INSTALLED PRIOR TO COMPLETION OF INTERIOR AND EXTERIOR.
- PROVIDE AND INSTALL STIFFENERS, BRACING, BACK-UP PLATES AND/OR SUPPORTING BRACKETS AS REQUIRED FOR THE INSTALLATION OF WALL MOUNTED OR SUSPENDED, ELECTRICAL AND MISC. EQUIPMENT.
- ALL EXTERIOR DOORS MUST OPEN OVER A LANDING NOT MORE THEN 1/2" BELOW THRESHOLD.
- PROVIDE A SLIP-TRACK ASSEMBLY AT ALL PARTITION WALLS THAT GO TO BOTTOM OF DECK OR STRUCTURE.
- PREPARE ALL FLOOR SURFACES AND WALLS AS REQUIRED TO RECEIVE FINISHES.
- ALL MECH, ELEC. & PLUMB. REQUIREMENTS FOR EQUIPMENT SHOWN TO BE VERIFIED & COORD. W/ G.C. PRIOR TO INSTALLATION.
- REFER TO MECH., ELEC. & PLUMB. FOR BUILDING SYSTEMS EQUIPMENT.
- PROVIDE SAW CUT IN CONCRETE SLAB AT A MIN. OF 10'-0" O.C.
- VERIFY DOOR & WINDOW ROUGH OPENINGS WITH MANUFACTURER PRIOR TO FRAMING.

GENERAL NOTES

- CONSULT CIVIL DRAWINGS FOR SITE LAYOUT, FINISHED GRADES, CATCH BASIN, STORM SEWER DESIGN AND UTILITY DESIGN.
- UNLESS NOTED OTHERWISE, ALL ELEVATIONS SHOWN ON THIS PLAN ARE IN RELATION TO FINISH FLOOR SET AT 100'-0".
- ALL SEWER, ELECTRICAL, PLUMBING, AND MECHANICAL SHALL CONFORM WITH ALL LOCAL, STATE AND NATIONAL CODES.
- ALL STEEL ANGLES EXPOSED TO VIEW SHALL BE SHOP PRIMED AND PAINTED.
- DO NOT SCALE DRAWINGS.
- MECHANICAL TO PROVIDE INSULATED CURBS AT ALL EQUIPMENT.
- ALL WORK SHALL BE ERECTED AND INSTALLED PLUMB LEVEL, SQUARE AND TRUE AND IN PROPER ALIGNMENT.
- MANUFACTURED MATERIALS, EQUIPMENT, ETC., SHALL BE INSTALLED IN ACCORDANCE WITH THE MANUFACTURER'S RECOMMENDATIONS AND INSTRUCTION UNLESS OTHERWISE NOTED.
- REFER TO STRUCTURAL DRAWINGS FOR LOCATIONS, SIZES, THICKNESSES, MASSES, SLOPES AND TOP OF SLABS, FOUNDATIONS, AND GRADE BEAMS.
- FOUNDATIONS DETAILS SHOWN ON THE ARCHITECTURAL PLANS ARE PROVIDED FOR INFORMATION PURPOSES ONLY. STRUCTURAL DETAILS SHALL GOVERN.
- PROVIDE AND INSTALL INTERIOR AND EXTERIOR SIGNAGE AS REQUIRED BY LOCAL, STATE AND FEDERAL REGULATIONS.
- ALL OWNER PROVIDED ITEMS WILL BE COORDINATED BETWEEN THE OWNER AND CONTRACTOR, FOR COORDINATION OF TYPE AND REQUIREMENTS OF EQUIPMENT AND TIME REQUIREMENTS TO KEEP A SCHEDULE.
- REFER TO ELECTRICAL DRAWINGS FOR TRANSFORMER, SITE LIGHTING, SWITCH GEAR AND ALL OTHER RELATED ELECTRICAL INFORMATION AND DETAILS.
- PROVIDE POSITIVE DRAINAGE AWAY FROM BUILDING, REFER TO CIVIL DRAWINGS.
- PROVIDE BACKER ROD AND SEALANT AT ALL INTERIOR PANEL JOINTS THAT ARE EXPOSED.

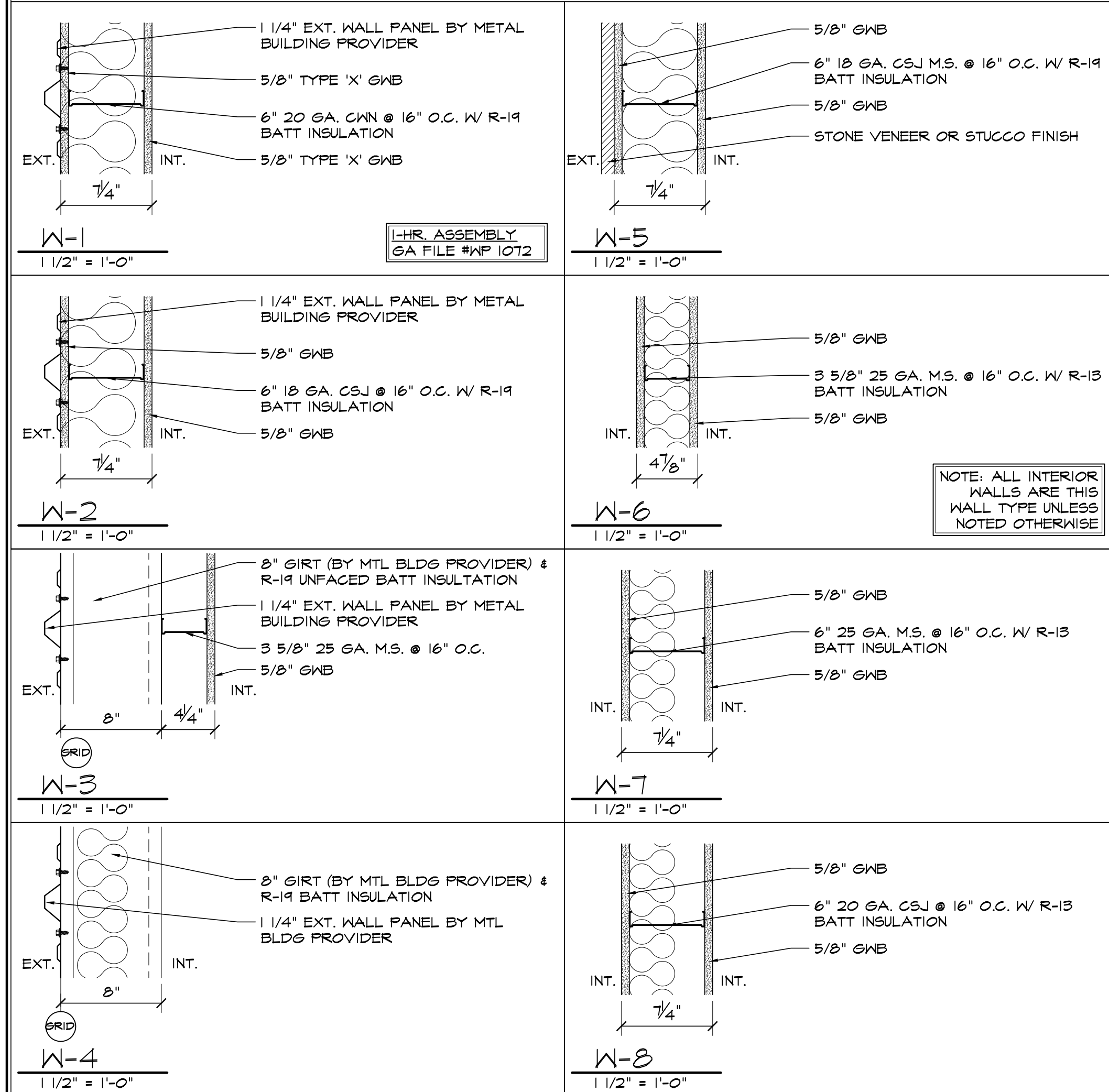
FLOOR PLAN LEGEND

- FULL HEIGHT WALL
- 6" PLUMBING WALL, 9' HIGH
- 1-HR. FIRE RATED WALL
- 9'-0" HIGH WALL

RCP LEGEND

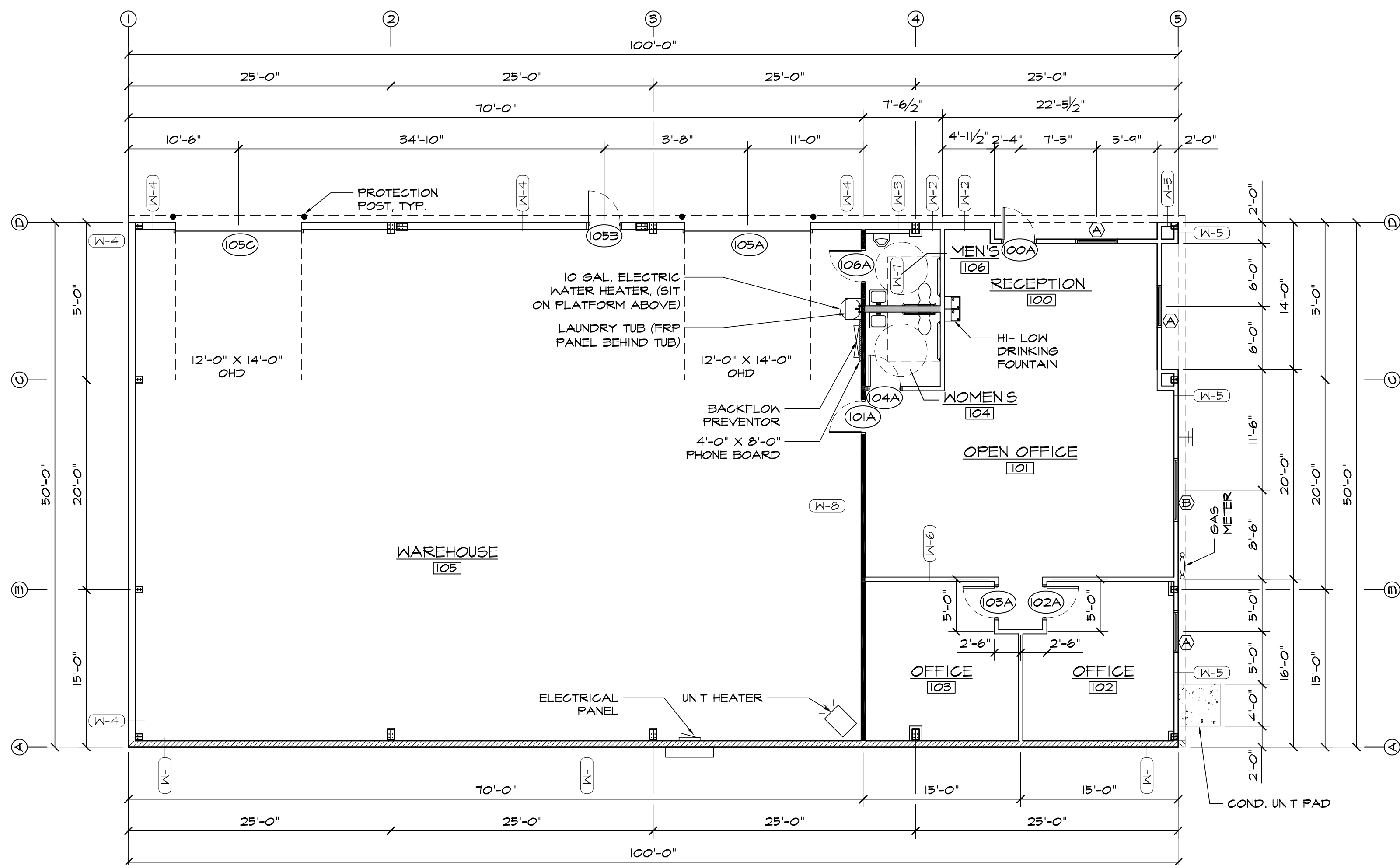
- === BULKHEAD, 3 3/8"x25 GA. STUDS W/ TRACK TOP & BTM
- 2 X 4 GRID
- HARD LID
- LIGHT FIXTURE
- ⊗ SUPPLY
- ⊘ RETURN

WALL TYPE DETAILS

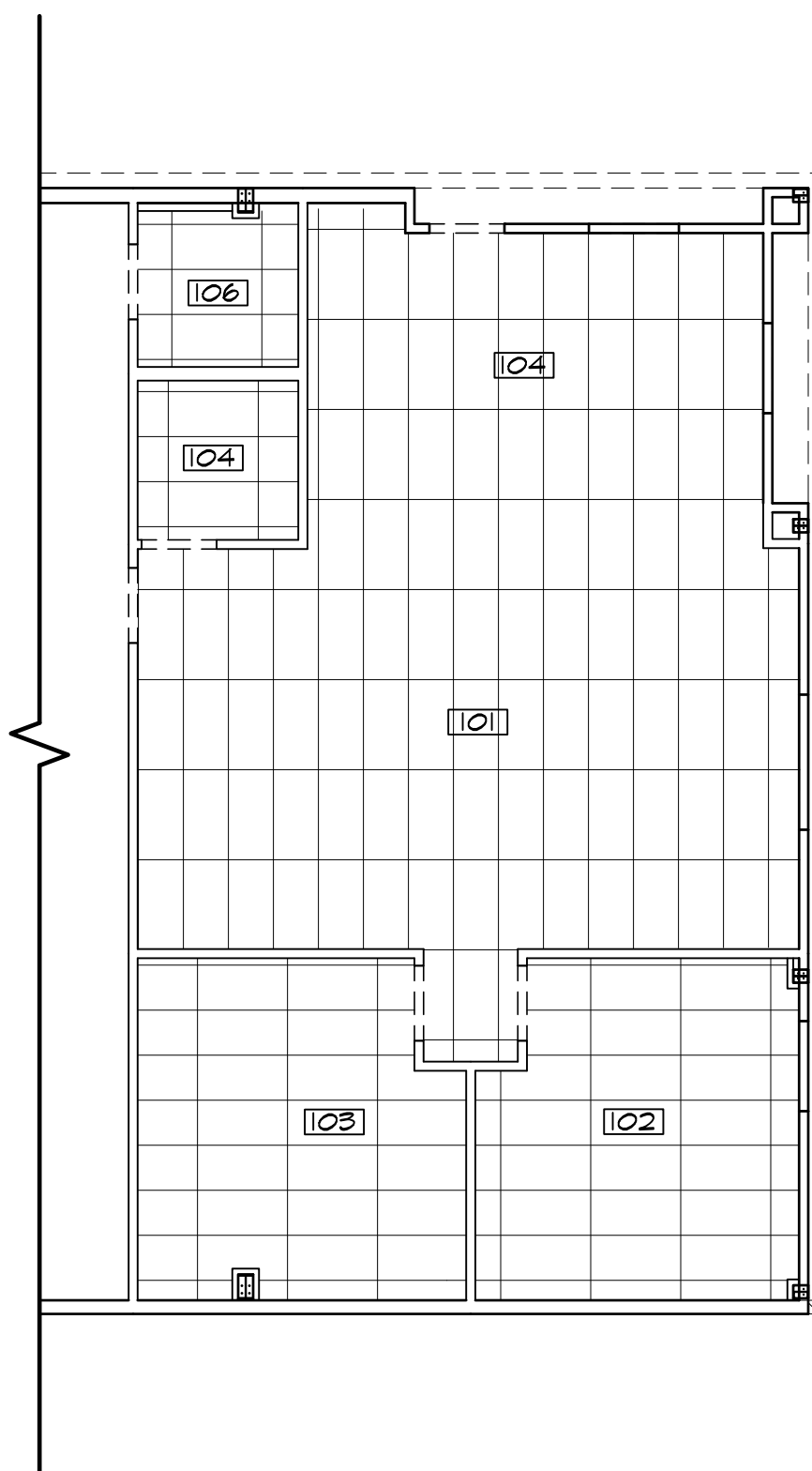


RCP NOTES

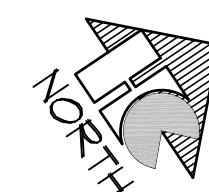
- REFER TO ELECTRICAL DRAWINGS FOR LIGHT FIXTURE TYPES AND LOCATIONS.
- ELECTRICAL SUBCONTRACTOR TO COORDINATE WITH MECHANICAL EQUIPMENT PRIOR TO INSTALLATION.
- REFER TO MECHANICAL DRAWINGS FOR DIFFUSER LOCATIONS.
- CENTER ALL SFRINKLER HEADS IN CENTER OF PANEL (IF ABLE). SFRINKLER SUBCONTRACTOR TO COORDINATE WITH MEP SUBS.



1 FLOOR PLAN
SCALE: 1/8"=1'-0"



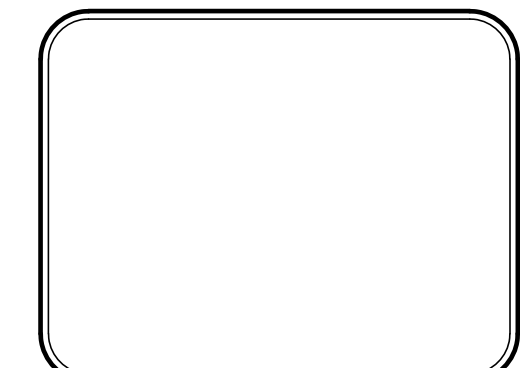
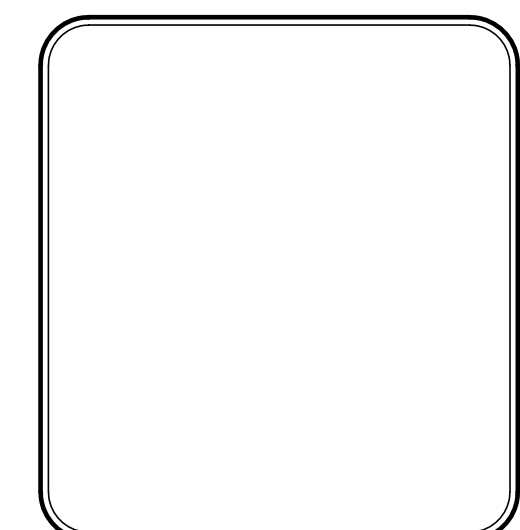
2 REFLECTED CEILING PLAN



HAMMERS CONSTRUCTION INC.
COMMERCIAL GENERAL CONTRACTORS SPECIALIZING IN DESIGN/BUILD
PRESIDENT: STEVE R. HAMMERS
VICE PRES: DAVID J. HAMMERS
1-411 WOOLSEY HEIGHTS
COLORADO SPRINGS, CO 80915
(719) 570-1589 FAX (719) 570-7008
www.hammersconstruction.com

THIS DRAWING CONTAINS MATERIAL & INFORMATION WHICH MAY NOT BE REPRODUCED WITHOUT WRITTEN CONSENT OF HAMMERS CONSTRUCTION INC. THESE DRAWINGS ARE INTENDED TO BE USED ONLY BY HAMMERS CONSTRUCTION & ITS REPRESENTATIVES. THESE DRAWINGS HAVE NOT BEEN PREPARED FOR ANY OTHER PURPOSE THAN TO INDICATE THE GENERAL FEATURES AND PLACEMENT OF THE PROPOSED PROJECT. COPYRIGHT © 2018 HAMMERS CONSTRUCTION

LOT 13
CLARIMONT BUSINESS PARK-LOT 13
1204 COLE VIEW
COLORADO SPRINGS, CO 80915
EL PASO COUNTY, COLORADO



DATE: SEP. 26, 2018
DRAWN BY: A. MCKENZIE
PROJ. MGR: Y. DYACHENKO
SCALE: SEE PLAN
APPROVED BY:
JOB NO: 1096

REVISIONS:

▲	FOR DP SUBMITTAL
▲	
▲	
▲	
▲	

A1.1
FLOOR PLAN