

THIS DRAWING CONTAINS MATERIAL & INFORMATION WHICH MAY NOT BE REPRODUCED WITHOUT WRITTEN CONSENT OF HAMMERS CONSTRUCTION, INC. THESE DRAWINGS ARE INTENDED TO BE USED ONLY BY HAMMERS CONSTRUCTION & ITS REPRESENTATIVES. THESE DRAWINGS HAVE NOT BEEN PREPARED FOR ANY OTHER PURPOSE THAN TO INDICATE THE GENERAL FEATURES AND PLACEMENT OF THE PROPOSED PROJECT. COPYRIGHT © 2016 HAMMERS CONSTRUCTION

LOT 13  
CLAREMONT BUSINESS PARK- LOT 13  
7204 COLE VIEW  
COLORADO SPRINGS, CO 80915  
EL PASO COUNTY, COLORADO

**cShea**  
consulting, LLC  
MECHANICAL • ELECTRICAL • PLUMBING  
4445 Northpark Dr., Suite 200  
Colorado Springs, CO 80907  
cshaeconsulting.com

REVIEW SET, NOT FOR CONSTRUCTION

DATE: SEPT. 27, 2018  
DRAWN BY: C.C.F.  
PROJ. MNGR: Y. DYACHENKO  
SCALE: SEE PLAN  
APPROVED BY:  
JOB NO: 18-1002

CALCULATION ZONE 1 STATISTICS					
DESCRIPTION	SYMBOL	AVERAGE	MAXIMUM	MINIMUM	AVG/MIN
CALCULATION ZONE 1	+	1.0 fc	4.7 fc	0.1 fc	10.0:1

LIGHT FIXTURE SCHEDULE									
TYPE	MFGR.	CATALOG NO.	LAMPS		MTG.	DESCRIPTION	NOTES	VOLTS	TOTAL WATTS
			QUAN	WATT					
DNLT	LITHONIA	LDN6 35/05 L06AR LD	1	7.6	LED	RECESSED	6IN LDN, 3500K, 500LM, 80CRI, CLEAR, MATTE DIFFUSE REFLECTOR	120	7.6
WP1	LITHONIA	DSXW1 LED 20C 530 40K T4M MVOLT HS	1	34.9	LED	SURFACE	DSXW1 LED WITH (2) 10 LED LIGHT ENGINES, TYPE T4M OPTIC, 4000K, @ 530mA WITH HOUSE-SIDE SHIELDS.	120	34.9
WP2	LITHONIA	DSXW1 LED 10C 350 40K T2S MVOLT	1	13.3	LED	SURFACE	DSXW1 LED WITH (1) 10 LED LIGHT ENGINES, TYPE T2S OPTIC, 4000K, @ 350mA.	120	13.3

RICHARD J. THEISEN  
7231 COLE VIEW  
PARCEL NO: 54081-02-040  
ZONE: CS  
USE: VACANT

RICHARD J. THEISEN  
7231 COLE VIEW  
PARCEL NO: 54081-02-041  
ZONE: CS  
USE: OFFICE/WAREHOUSE

J & G CENTERPRISES, LLC  
7316 McCLAIN POINT  
PARCEL NO: 54081-02-018  
ZONE: CS  
USE: OFFICE/WAREHOUSE

BEACON STREET PROTY  
7340 McCLAIN POINT  
PARCEL NO: 54081-02-019  
ZONE: CS  
USE: OFFICE/WAREHOUSE

ROSE GOLD INVESTMENT, LLC  
7340 McCLAIN POINT  
PARCEL NO: 54081-02-016  
ZONE: CS  
USE: OFFICE/WAREHOUSE

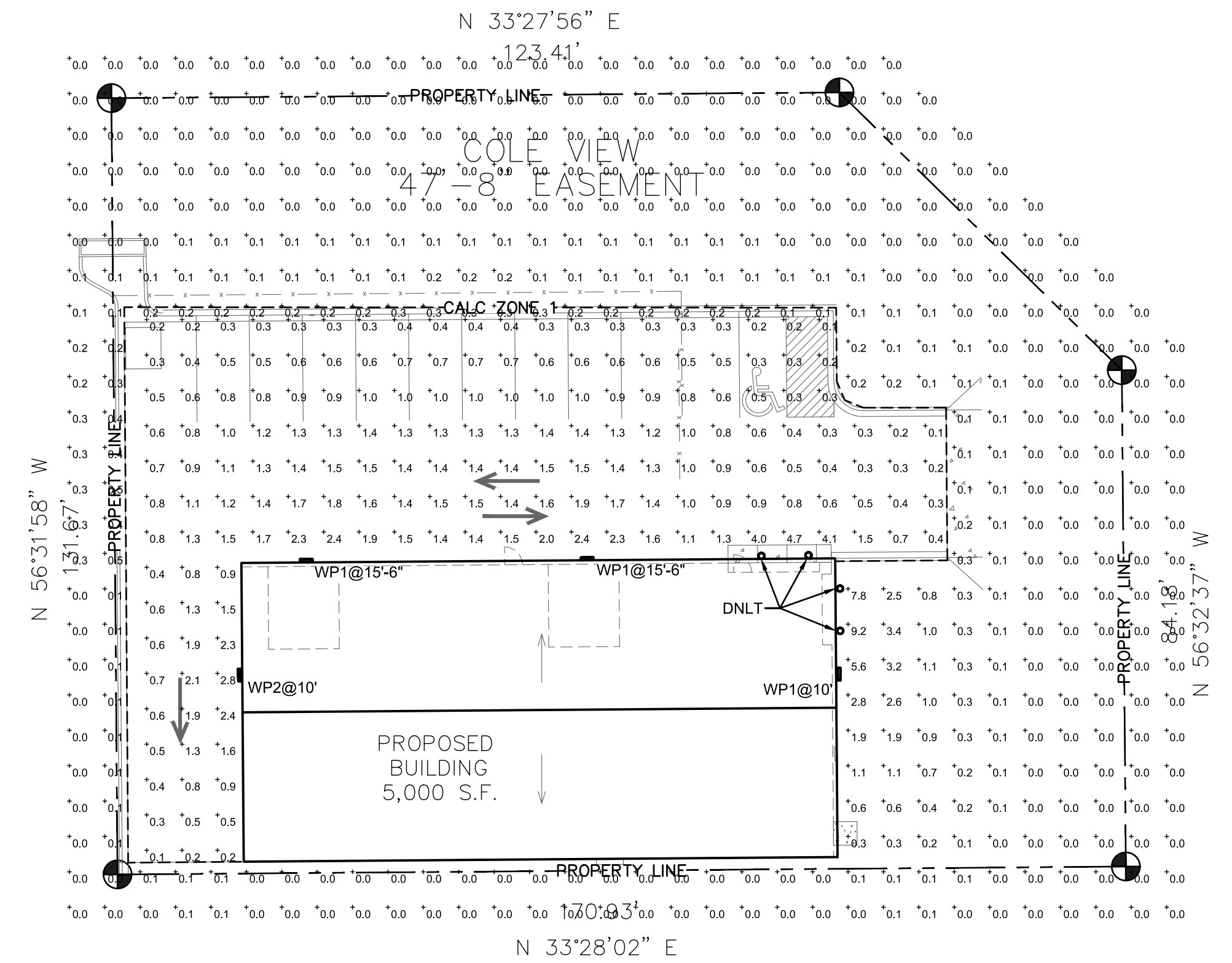
URPE PROPERTIES, LLC  
7189 COLE VIEW  
PARCEL NO: 54081-02-043  
ZONE: CS  
USE: OFFICE/WAREHOUSE



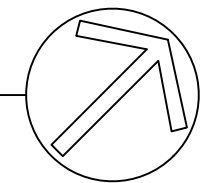
2 LDN6 LED DOWNLIGHT (DNLT)  
8 SCALE: NONE



3 DSXW1 WALLPACK LUMINAIRE (WP1 & WP2)  
8 SCALE: NONE



1 SITE PHOTOMETRIC  
8 SCALE: 1/16" = 1'



**LITHONIA LIGHTING**

**LDN6**  
New Construction Downlight

**FEATURES & SPECIFICATIONS**

**REMARKS:** - 100% LED components - Lifetime: 50,000 hours (at 70°C)

**CONSTRUCTION:** - Galvanized steel mounting frame, galvanized steel junction box with built-in load capacity and surge protection

**INSTALLATION:** - 1/2" hole for 3/8" diameter for mounting (or 1/2" hole, add additional hole) - 1/2" hole for 3/8" diameter for mounting (or 1/2" hole, add additional hole)

**WARNING:** - Do not use in wet or damp locations.

**LDN6 4" OPEN and BALLBEAR LED**  
New Construction Downlight

**Capable Luminaire**

**LITHONIA LIGHTING**

**LDN6**

**PHOTOMETRY**

**Distribution Curve**

**LDN6 55/30 L06AR**, Input watts: 12.75, delivered lumens: 1092, LM/W = 84.86, spacing criterion at  $\theta=1.02$ , test no. GF 3074P31.

**LDN6 35/30 L06AR**, Input watts: 34.69, delivered lumens: 3033.9, LM/W = 87.45, spacing criterion at  $\theta=1.02$ , test no. GF 3074P22.

**LDN6 55/50 L06AR**, Input watts: 55.56, delivered lumens: 4922.1, LM/W = 88.59, spacing criterion at  $\theta=1.02$ , test no. GF 3074P40.

**LITHONIA LIGHTING**

**LITHONIA LIGHTING**

**LDN6**

**HOW TO ESTIMATE DELIVERED LUMENS IN EMERGENCY MODE**

Use the formula below to estimate the delivered lumens in emergency mode:

**Delivered Lumens = 1.25 x P x LPW**

P = Output power of emergency driver. P = 10W for FS1050CP

LPW = Lumens per watt rating of the luminaire. This information is available on the LED luminaire spec sheet.

The LPW rating is also available at DesignLight Consortium.

**LITHONIA LIGHTING**

**LITHONIA LIGHTING**

**LDN6**

**ADDITIONAL DATA**

**DRIVER INFORMATION**

**LED INFORMATION**

**ACCESSORIES**

**Capable Luminaire**

**LITHONIA LIGHTING**

**LDN6**

**Wiring Diagram**

**Wiring Key**

**Choose Wall Control**

**nLight® Wall Control Accessories**

**nLight® Wall Control Accessories**

**Wiring Diagram**

**LITHONIA LIGHTING**

**D-Series Size 1 LED Wall Luminaire**

**Specifications**

**Back Box (BBW, ELWCW)**

**Ordering Information**

**EXAMPLE: DSW1W LED ZDC 1000 40K T8M MVOLT D0XD1D**

**Accessories**

**Capable Luminaire**

**LITHONIA LIGHTING**

**D-Series Size 1 LED Wall Luminaire**

**Performance Data**

**Lumen Output**

Open Beam	Open Beam	Open Beam	Open Beam	Open Beam	Open Beam	Open Beam	Open Beam	Open Beam	Open Beam
Model	Wattage	Delivered Lumens	LM/W	Beam Angle	Spacing	Height	Beam Diameter	Beam Area	Beam Irradiance
3500A	12W	1092	84.86	40°	6.0m	1.8m	1.1m	0.85m²	1280 lux
3500A	35W	3034	86.7	40°	6.0m	2.1m	1.2m	0.96m²	1280 lux
3500A	55W	4922	89.4	40°	6.0m	2.4m	1.3m	1.04m²	1280 lux
5500A	12W	1092	84.86	35°	6.0m	1.7m	0.8m²	0.8m²	1600 lux
5500A	35W	3034	86.7	35°	6.0m	1.9m	0.9m²	0.9m²	1600 lux
5500A	55W	4922	89.4	35°	6.0m	2.1m	1.0m²	1.0m²	1600 lux
7500A	12W	1092	84.86	30°	6.0m	1.5m	0.7m²	0.7m²	1800 lux
7500A	35W	3034	86.7	30°	6.0m	1.7m	0.8m²	0.8m²	1800 lux
7500A	55W	4922	89.4	30°	6.0m	1.9m	0.9m²	0.9m²	1800 lux

**LITHONIA LIGHTING**

**LDN6**

**Performance Data**

**Lumen Ambient Temperature (LAT) Multipliers**

**Electrical Load**

**Projected LED Luminaire Maintenance**

**Photometric Diagrams**

**Options and Accessories**

**REMARKS:**

**CONSTRUCTION:**

**INSTALLATION:**

**WARNING:**

**ACCESSORIES:**

**REMARKS:**

**CONSTRUCTION:**

**INSTALLATION:**

**WARNING:**

**ACCESSORIES:**

**HAMMERS CONSTRUCTION INC.**

COMMERCIAL GENERAL CONTRACTORS SPECIALIZING IN DESIGN/BUILD

PRESIDENT: STEVE R. HAMMERS  
VICE PRES: DAVID J. HAMMERS  
C/O: JIM WOODS COLLECT HEIGHTS  
4415 Northpark Dr., Suite 200  
Colorado Springs, CO 80907  
(719) 570-1509 FAX: (719) 570-7008  
www.hammersconstruction.com

THIS DRAWING CONTAINS MATERIAL & INFORMATION WHICH NOT BE REPRODUCED WITHOUT WRITTEN CONSENT OF HAMMERS CONSTRUCTION, INC. THESE DRAWINGS ARE INTENDED TO BE USED ONLY BY HAMMERS CONSTRUCTION & ITS REPRESENTATIVES. THESE DRAWINGS HAVE NOT BEEN PREPARED FOR ANY OTHER PURPOSE THAN TO INDICATE THE GENERAL FEATURES AND PLACEMENT OF THE PROPOSED PROJECT. COPYRIGHT © 2018 HAMMERS CONSTRUCTION

LOT 13  
CLAREMONT BUSINESS PARK- LOT 13  
7204 COLE VIEW  
COLORADO SPRINGS, CO 80915  
EL PASO COUNTY, COLORADO

**cShea Consulting, LLC**  
MECHANICAL + ELECTRICAL + PLUMBING  
4445 Northpark Dr., Suite 200  
Colorado Springs, CO 80907  
www.csheaconsulting.com

REVIEW SET, NOT FOR CONSTRUCTION

DATE: SEPT. 27, 2018  
DRAWN BY: C.C.F.  
PROJ. MNGR: Y. DYACHENKO  
SCALE: SEE PLAN  
APPROVED BY:  
JOB NO: 18-1002

9 of 10