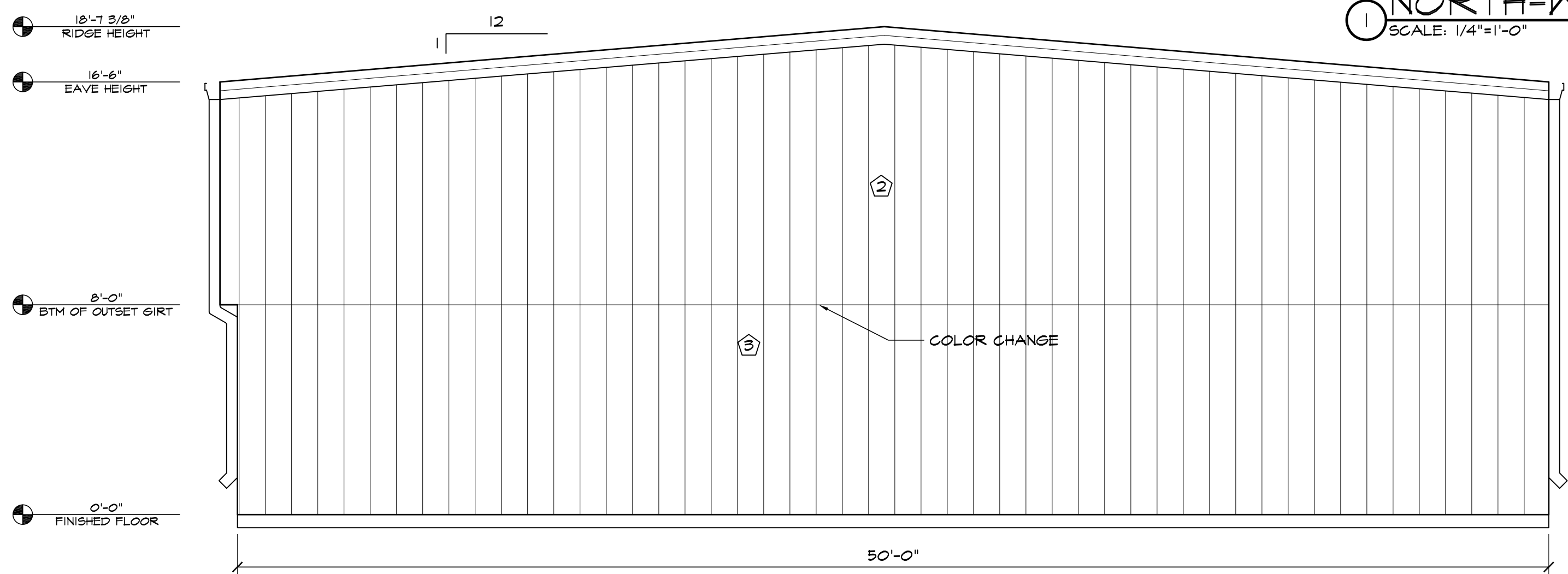
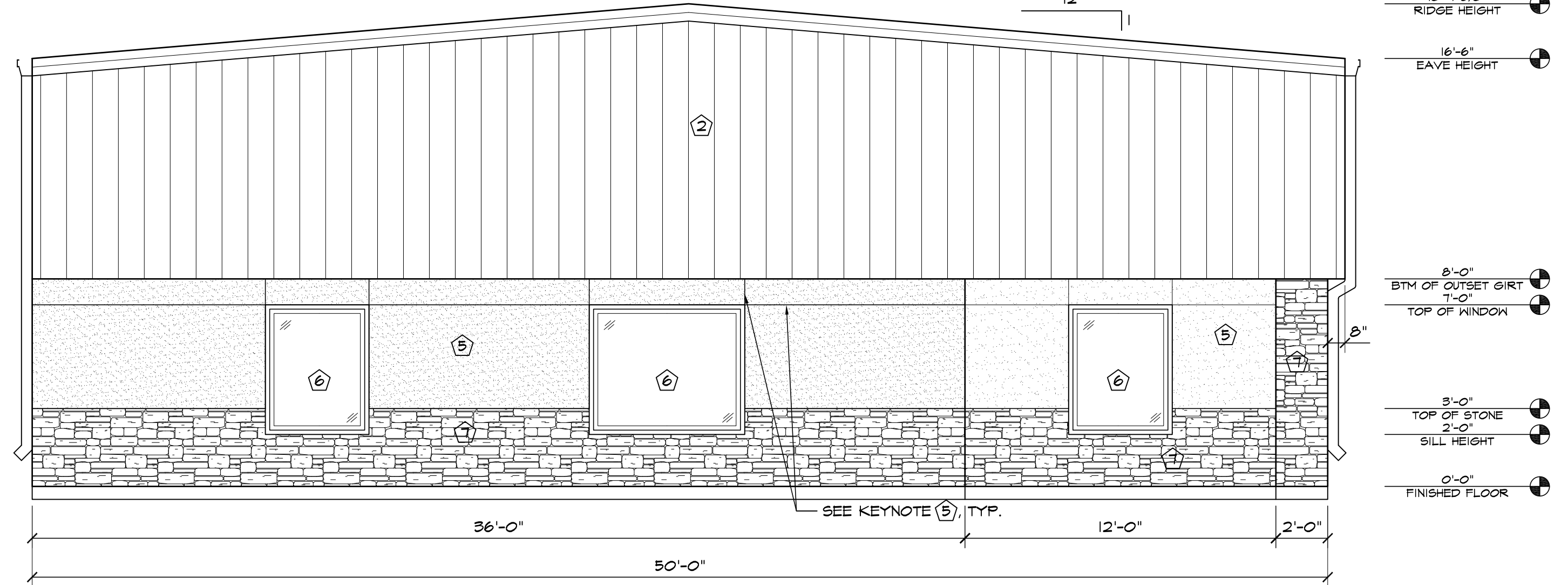


1 NORTH-WEST ELEVATION
SCALE: 1/4"=1'-0"

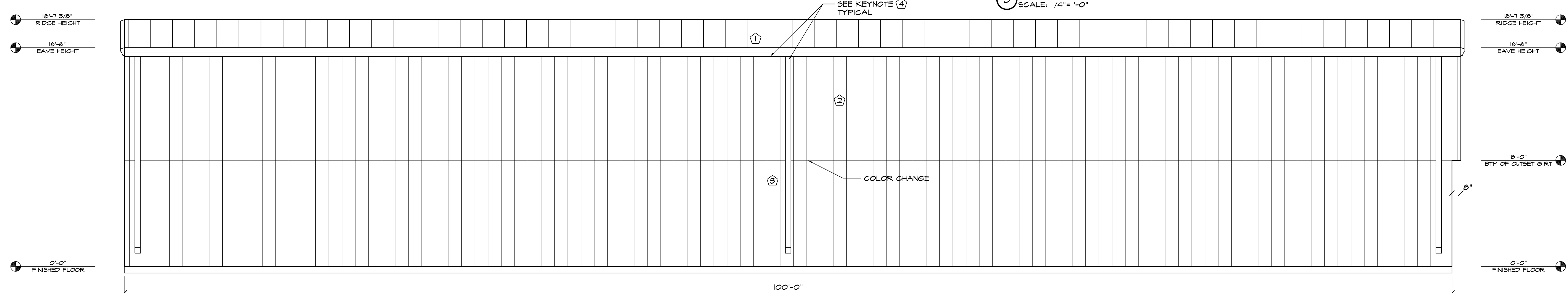
| ELEVATION KEY NOTES | |
|---------------------|---|
| 1 | PREFINISHED 24 GA. "FBR" METAL ROOF PANELS BY METAL BUILDING PROVIDER. |
| 2 | PREFINISHED 26 GA. "FBR" METAL WALL PANELS BY METAL BUILDING PROVIDER COLOR - HAWAIIAN BLUE |
| 3 | PREFINISHED 26 GA. "FBR" METAL WALL PANELS BY METAL BUILDING PROVIDER COLOR - SF GRAY |
| 4 | PREFINISHED GUTTER & DOWNSPOUTS BY METAL BUILDING PROVIDER |
| 5 | 3/4" STUCCO FINISH SYS., EXPANSION JOINT - 120 SF MAX AREA |
| 6 | SEE SCHEDULES ON A4.1 FOR ALL DOOR & WINDOW INFORMATION |
| 7 | STONE VENEER W/ 2" CAP INSTALLED W/ SCHLUTER TRIM |
| 8 | WALL PACK LIGHT - TOP OF LIGHT @ 15'-6" A.F.F. |



2 SOUTH-WEST ELEVATION
SCALE: 1/4"=1'-0"



3 NORTH-EAST ELEVATION
SCALE: 1/4"=1'-0"



4 SOUTH-EAST ELEVATION
SCALE: 1/4"=1'-0"

EL PASO COUNTY FILE NO. PPR-18-044

HAMMERS CONSTRUCTION INC.
COMMERCIAL GENERAL CONTRACTORS SPECIALIZING IN DESIGN/BUILD
PRESIDENT: STEVE R. HAMMERS
VICE PRES: DAVID J. HAMMERS
1411 WOOLSEY HEIGHTS
COLORADO SPRINGS, CO 80915
(719) 570-1589 FAX (719) 570-7008
www.hammersconstruction.com

THIS DRAWING CONTAINS MATERIAL & INFORMATION WHICH MAY NOT BE REPRODUCED WITHOUT WRITTEN CONSENT OF HAMMERS CONSTRUCTION INC. THESE DRAWINGS ARE INTENDED TO BE USED ONLY BY HAMMERS CONSTRUCTION & ITS REPRESENTATIVES. THESE DRAWINGS HAVE NOT BEEN PREPARED FOR ANY OTHER PURPOSE THAN TO INDICATE THE GENERAL FEATURES AND PLACEMENT OF THE PROPOSED PROJECT. COPYRIGHT © 2018 HAMMERS CONSTRUCTION

LOT 13
CLARIMONT BUSINESS PARK-LOT 13
1204 COLE VIEW
COLORADO SPRINGS, CO 80915
EL PASO COUNTY, COLORADO

DATE: SEP. 26, 2018
DRAWN BY: A. MCKENZIE
PROJ. MGR: Y. DYACHENKO
SCALE: SEE PLAN
APPROVED BY:
JOB NO: 1096

RESUBMITTALS:

| | |
|---|----------------------------|
| ▲ | 12-03-18/COMMENTS 10-24-18 |
| ▲ | |
| ▲ | |
| ▲ | |
| ▲ | |