

# SOLACE APARTMENTS FILING NO. 1 - SAND CREEK CENTER TRIBUTARY

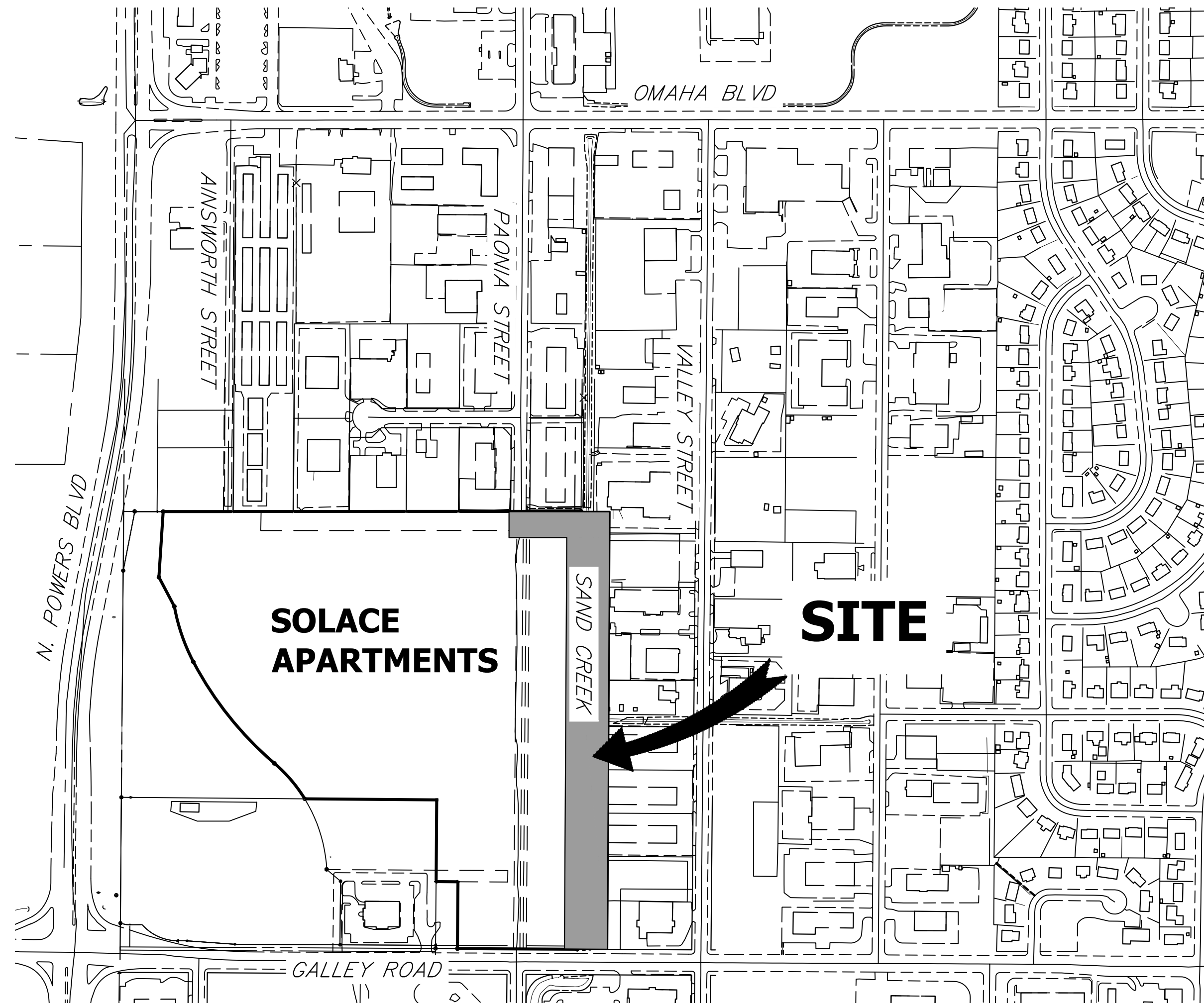
A PORTION OF SECTION 7, TOWNSHIP 14 SOUTH, RANGE 65 WEST OF THE 6TH P.M.

EL PASO COUNTY, COLORADO

## CHANNEL IMPROVEMENTS

### ABBREVIATIONS

AC	ACRE	FDP	FINAL DEVELOPMENT PLAN	PL	PROPERTY LINE
AD	ALGEBRAIC DIFFERENCE	FDR	FINAL DRAINAGE REPORT	PR	PROPOSED
AH	AHEAD	FES	FLARED END SECTION	PRC	POINT OF REVERSE CURVATURE
ARCH	ARCHITECT	FG	FINISHED GRADE	PT	POINT OF TANGENCY
ASCE	AMERICAN SOCIETY OF CIVIL ENGINEERS	FH	FIRE HYDRANT	PV	PLUG VALVE
ASSY	ASSEMBLY	FL	FLOWLINE	PVC	POLYVINYL CHLORIDE
AVE	AVENUE	FIL	FILING	R	RADIUS
BB	BOX BASE	FO	FIBER OPTIC CABLE	RCP	REINFORCED CONCRETE PIPE
BK	BACK	GB	GRADE BREAK	RD	ROAD
BNDY	BOUNDARY	GS	GAS EASEMENT	ROW	RIGHT OF WAY
BOP	BOTTOM OF PIPE	GIS	GEOGRAPHIC INFORMATION SYSTEM	RT	RIGHT
BOV	BLOW OFF VALVE	GL	GAS LINE	S	SOUTH
BFV	BUTTERFLY VALVE	GPS	GLOBAL POSITIONING SYSTEM	STE	STEEL
BLVD	BOULEVARD	GV	GATE VALVE	SAN	SANITARY SEWER
BW	BOTTOM OF WALL	HC	HANDICAP	SF	SQUARE FEET
C&G	CURB & GUTTER	HDC	HIGH DEFLECTION COUPLING	ST	STREET
CATV	CABLE TELEVISION	HDPE	HIGH DENSITY POLYETHYLENE	STA	STATION
CB	CATCH BASIN	HGL	HYDRAULIC GRADE LINE	STM	STORM SEWER
CBC	CONCRETE BOX CULVERT	HOA	HOME OWNERS ASSOCIATION	SV	SQUARE YARD
CDOT	COLORADO DEPARTMENT OF TRANSPORTATION	HP	HIGH POINT	SY-IN	SQUARE YARD INCH
CDS	CUL-DE-SAC	I	INLET	TB	THRUST BLOCK
CFS	CUBIC FEET PER SECOND	IE	IRRIGATION EASEMENT	TBC	TOP BACK OF CURB
CL	CENTER LINE	INT	INTERSECTION	TBW	TOP BACK OF WALK
CLOMR	CONDITIONAL LETTER OF MAP REVISION	INV	INVERT	TEL	TELEPHONE
CLR	CLEAR	IRR	IRRIGATION	TOA	TOP OF ASPHALT
CMP	CORRUGATED METAL PIPE	KB	KICK (THRUST) BLOCK	TOB	TOP OF BOX
CO	CLEAN OUT	LE	LANDSCAPE EASEMENT	TOC	TOP OF CURB OR CONCRETE
CONC	CONCRETE	LF	LINEAR FEET	TOF	TOP OF FOUNDATION
CR	CIRCLE	LN	LANE	TOP	TOP OF PIPE
CSP	CORRUGATED STEEL PIPE	LNR	LETTER OF MAP REVISION	TW	TOP OF WALL
CT	COURT	LP	LOW POINT	TYP	TYPICAL
CTRB	CONCRETE THRUST REDUCER BLOCK	LS	LUMP SUM	UDFCD	URBAN DRAINAGE AND FLOOD CONTROL DISTRICT
CY	CUBIC YARD	LT	LEFT	UE	UTILITY EASEMENT
DBPS	DRAINAGE BASIN PLANNING STUDY	MAX	MAXIMUM	U&DE	UTILITY & DRAINAGE EASEMENT
DE	DRAINAGE EASEMENT	MDP	MASTER DEVELOPMENT DRAINAGE PLAN	UGE	UNDERGROUND ELECTRIC
DIA	DIAMETER	MH	MANHOLE	VCP	VITRIFIED CLAY PIPE
DIP	DUCTILE IRON PIPE	MIN	MINIMUM	VPC	VERTICAL POINT OF CURVATURE
DR	DRIVE	N	NORTH	VPI	VERTICAL POINT OF INTERSECTION
DRC	DESIGN REVIEW COMMITTEE	NRCP	NON-REINFORCED CONCRETE PIPE	VPT	VERTICAL POINT OF TANGENCY
DU	DWELLING UNITS	ODP	OFFICIAL DEVELOPMENT PLAN	VTC	VEHICLE TRACKING CONTROL
E	EAST	OHE	OVERHEAD ELECTRIC	W	WEST
EA	EACH	OHU	OVERHEAD UTILITY	WL	WATER LINE
EGL	ENERGY GRADE LINE	PC	POINT OF CURVATURE	WM	WATER MAIN
EL	ELEVATION	PCC	POINT OF COMPOUND CURVATURE	WRD	WATER RESOURCES DEPARTMENT
ELEC	ELECTRIC	PCR	POINT OF CURB RETURN	WS	WATER SURFACE
EOA	EDGE OF ASPHALT	PDP	PRELIMINARY DEVELOPMENT PLAN	WSE	WATER SURFACE ELEVATION
ESMT	EASEMENT	PE	PROFESSIONAL ENGINEER	WTR	WATER
EST	ESTIMATE	PI	POINT OF INTERSECTION	YR	YEAR
EX	EXISTING	PKWY	PARKWAY		



VICINITY MAP  
SCALE: 1" = 300'

### SHEET INDEX

1	COVER SHEET
2	GENERAL NOTES
3	SITE AND DEMO PLAN
4-6	CHANNEL PLAN AND PROFILES
7	CHANNEL DETAILS
8	DROP STRUCTURES PLAN AND PROFILE
9	DROP STRUCTURE DETAIL SHEETS
10	PAONIA STREET OVERFLOW PLAN
TOTAL	10

### BASIS OF BEARINGS

THE EASTERLY LINE OF LOT 2, POWERS & GALLEY PLAZA FILING NO. 1 RECORDED IN PLAT BOOK A-4 AT PAGE 30, SAID LINE BEING MONUMENTED BY A 1-1/4" YELLOW PLASTIC CAP STAMPED "LS 22106" AT THE SOUTH END AND A 1" O.D. PIPE AT THE NORTH END, SAID LINE BEARING N00°27'47"E AS SHOWN ON SAID PLAT.

### BENCHMARK

FIMS MONUMENT FB81, BEING MONUMENTED BY A 3-1/4" ALUMINUM CAP IN RANGE BOX WITH NO TOP, LOCATED 900 FEET EAST OF THE INTERSECTION OF E. PLATTE AVENUE AND VALLEY STREET, APPROXIMATELY 80 FEET NORTH OF THE CENTERLINE OF E PLATTE AVENUE. SAID MONUMENT HAVING A PUBLISHED ELEVATION OF 6275.86 FEET, NAVD88.

THE LOCATIONS OF EXISTING ABOVE GROUND AND UNDERGROUND UTILITIES ARE SHOWN IN AN APPROXIMATE WAY ONLY. THE CONTRACTOR SHALL DETERMINE THE EXACT LOCATION OF ALL EXISTING UTILITIES BEFORE COMMENCING WORK. THE CONTRACTOR SHALL BE FULLY RESPONSIBLE FOR ANY AND ALL DAMAGES WHICH MIGHT BE CAUSED BY HIS FAILURE TO EXACTLY LOCATE AND PRESERVE ANY AND ALL ABOVE GROUND AND UNDERGROUND UTILITIES.

### OWNER

CS POWERS & GALLEY LLC  
510 S. NEIL ST.  
CHAMPAIGN, IL 61820  
P~734.216.2577

### CIVIL ENGINEER

JR ENGINEERING  
5475 TECH CENTER DR  
SUITE 235  
COLORADO SPRINGS, CO 80919  
CONTACT: MIKE BRAMLETT  
C~719.659.7679

### PLANNER

N.E.S. INC.  
619 N. CASCADE AVE  
SUITE 200  
COLORADO SPRINGS, CO 80903  
CONTACT: TAMARA BAXTER  
P~719.471.0073

### GEOTECHNICAL ENGINEER

CTL THOMPSON, INC  
5170 MARK DABLING BLVD  
COLORADO SPRINGS, CO 80918  
P~719.528.8300



RECORD DRAWINGS  
12/23



### EL PASO COUNTY STATEMENT

COUNTY PLAN REVIEW IS PROVIDED ONLY FOR GENERAL CONFORMANCE WITH COUNTY DESIGN CRITERIA. THE COUNTY IS NOT RESPONSIBLE FOR THE ACCURACY AND ADEQUACY OF THE DESIGN, DIMENSIONS, AND/OR ELEVATIONS WHICH SHALL BE CONFIRMED AT THE JOB SITE. THE COUNTY THROUGH THE APPROVAL OF THIS DOCUMENT ASSUMES NO RESPONSIBILITY FOR COMPLETENESS AND/OR ACCURACY OF THIS DOCUMENT.

FILED IN ACCORDANCE WITH THE REQUIREMENTS OF THE EL PASO COUNTY LAND DEVELOPMENT CODE, DRAINAGE CRITERIA MANUAL VOLUMES 1 AND 2, AND ENGINEERING CRITERIA MANUAL AS AMENDED.

IN ACCORDANCE WITH ECM SECTION 1.12, THESE CONSTRUCTION DOCUMENTS WILL BE VALID FOR CONSTRUCTION FOR A PERIOD OF 2 YEARS FROM THE DATE SIGNED BY THE EL PASO COUNTY ENGINEER. IF CONSTRUCTION HAS NOT STARTED WITHIN THOSE 2 YEARS, THE PLANS WILL NEED TO BE RESUBMITTED FOR APPROVAL, INCLUDING PAYMENT OF REVIEW FEES AT THE PLANNING AND COMMUNITY DEVELOPMENT DIRECTOR'S DISCRETION.

### OWNER/DEVELOPER STATEMENT

I, THE OWNER/DEVELOPER HAVE READ AND WILL COMPLY WITH ALL OF THE REQUIREMENTS SPECIFIED IN THESE DETAILED PLANS AND SPECIFICATIONS.

DANE OLMSTEAD

DATE

CS POWERS & GALLEY LLC  
510 S NEIL ST  
CHAMPAIGN, IL 61820

JENNIFER IRVINE, P.E.

DATE

COUNTY ENGINEER/ECM ADMINISTRATOR

### ENGINEER'S STATEMENT

PREPARED UNDER MY DIRECT SUPERVISION AND ON BEHALF OF JR ENGINEERING

MIKE A. BRAMLETT, P.E.  
COLORADO P.E. 32314  
FOR AND ON BEHALF OF JR ENGINEERING

DATE

08/03/22

SAND CREEK CENTER TRIBUTARY COVER SHEET	BY	DATE
No. REVISION		
H-SCALE	1"=300'	
V-SCALE	N/A	
DATE	08/03/22	
DESIGNED BY	JBP	
DRAWN BY	JBP	
CHECKED BY		
SHEET	1	OF 10
JOB NO.	25174.00	

UNTIL SUCH TIME AS THESE DRAWINGS ARE APPROVED BY THE APPROPRIATE REVIEWING AGENCIES, OR ENGINEERING APPROVES THEIR USE, THESE DRAWINGS ARE DESIGNATED BY WRITTEN AUTHORIZATION.

PREPARED FOR  
CS POWERS & GALLEY LLC  
510 S. NEIL ST.  
CHAMPAIGN, IL 61820  
OFFICE PHONE  
(734) 216-2577

J.R. ENGINEERING  
A Westman Company  
Central 303-740-9888 • Colorado Springs 719-588-2583  
Fort Collins 970-491-9888 • www.jrengineering.com

**LAYER LINETYPE LEGEND**

	EXISTING	PROPOSED
MATCH LINE	---	---
SECTION LINE	---	---
BOUNDARY LINE	---	---
PROPERTY LINE	---	---
EASEMENT LINE	---	---
RIGHT OF WAY	---	---
CENTERLINE	---	---
FENCE	-x-x-	-x-x-
GUARDRAIL	-o-o-	-o-o-
CABLE TV	-TV-TV-	-TV-TV-
ELECTRIC	-E-E-	-E-E-
FIBER OPTIC	-FO-FO-	-FO-FO-
GAS MAIN	-G-G-	-G-G-
IRRIGATION MAIN	-IRR-IRR-	-IRR-IRR-
OVERHEAD UTILITY	-OHU-OHU-	-OHU-OHU-
SANITARY SEWER	-S-S-	-S-S-
STORM DRAIN	-T-T-	-T-T-
TELEPHONE	-T-T-	-T-T-
WATER MAIN	-W-W-	-W-W-
SWALE/WATERWAY FLOWLINE	~	~
DIVERSION DITCH	~	~
TOP OF SLOPE	∇	∇
TOE OF SLOPE	∇	∇
100 YEAR FLOODPLAIN	---	---
5 YEAR HGL	---	---
100 YEAR HGL	---	---

**UTILITIES LEGEND**

	EXISTING	PROPOSED
<b>STORM SEWER</b>		
MANHOLE	⊙	●
STORM INLET	⊠	■
AREA INLET - SQUARE	□	■
FLARED END SECTION	▷	▷
RIPRAP	⊠	⊠
<b>SANITARY SEWER</b>		
LINE MARKER	Mkr S <sup>o</sup>	
SERVICE MARKER	△	
CLEAN-OUT	o	o
MANHOLE W/ DIRECTIONAL FLOW ARROW	⊙	⊙
<b>WATER LINE</b>		
LINE MARKER	Mkr W <sup>o</sup>	
SERVICE MARKER	△	
FIRE HYDRANT	⊕	⊕
MANHOLE	⊙	●
BEND	∠	∠
BLOW-OFF VALVE	⊕	⊕
WELL	⊙	●
METER	⊙	●
VALVE	▷	▷
REDUCER	⊕	⊕
CROSS	⊕	⊕
PLUG W/ THRUST BLOCK	⊕	⊕
TEE	⊕	⊕
AIR & VACUUM VALVE ASSEMBLY	⊕	⊕
<b>GAS LINE</b>		
MARKER	Mkr G <sup>o</sup>	
SERVICE MARKER	△	
METER	⊙	●
VALVE	▷	▷
PLUG	⊕	⊕
<b>DRY UTILITIES</b>		
CABLE TV MARKER	Mkr TV <sup>o</sup>	
CABLE TELEVISION PEDESTAL	⊠	
ELECTRIC MARKER	Mkr E <sup>o</sup>	
ELECTRIC SERVICE MARKER	△	
ELECTRICAL PEDESTAL	⊠	
ELECTRICAL METER	⊙	●
ELECTRICAL MANHOLE	⊙	●
FIBER-OPTIC MARKER	Mkr FO <sup>o</sup>	
IRRIGATION PEDESTAL	⊠	
TELEPHONE MARKER	Mkr T <sup>o</sup>	
TELEPHONE PEDESTAL	⊠	
TELEPHONE MANHOLE	⊙	●
UTILITY POLE	o	o
GUY ANCHOR	o	o
GUY POLE	o	o

**MONUMENTATION LEGEND**

ALUMINUM CAP - FOUND	● AC
BRASS CAP - FOUND	● BC
BENCHMARK - FOUND	⊕
CROSS - FOUND	+
MONUMENT - SET	○
MONUMENT - FOUND (DEFAULT)	●
MONUMENT - FOUND (ALTERNATE 1)	■
MONUMENT - FOUND (ALTERNATE 2)	⊠
MONUMENT - FOUND (ALTERNATE 3)	▲
MONUMENT - FOUND (ALTERNATE 4)	△
MONUMENT - FOUND (ALTERNATE 5)	⬢
MONUMENT - FOUND (ALTERNATE 6)	⊙
MONUMENT - FOUND (ALTERNATE 7)	⊙
NAIL & WASHER - FOUND	● NAIL & WASHER
PANEL - FOUND	⊕
PK NAIL - FOUND	● PK NAIL
ROW MONUMENT - FOUND	⊕
ROW MARKER - FOUND	⊠
SECTION CORNER - FOUND	⊕
SECTION CORNER - SET	⊕
QUARTER-SECTION CORNER - FOUND	⊕
QUARTER-SECTION CORNER - SET	⊕
SECTION CENTER - FOUND	⊙
SECTION CENTER - FOUND	⊙
CONTROL/TRVERSE POINT - SET	△

**DRAINAGE REPORT PLANS**

	KEY
BASIN DESIGNATION (NO COEFFICIENT)	⊠
BASIN DESIGNATION (1 COEFFICIENT)	⊠
BASIN DESIGNATION (2 COEFFICIENTS)	⊠
ANALYSIS POINT IDENTIFIER	⊠
BASIN DESIGNATION (HISTORIC)	⊠
BASIN DESIGNATION (DEVELOPED)	⊠
SUB-BASIN DESIGNATION (DEVELOPED)	⊠
DRAINAGE PIPE IDENTIFIER	⊠
DRAINAGE POINT IDENTIFIER (HEXAGONAL)	⊠
DRAINAGE POINT IDENTIFIER (TRIANGULAR)	⊠
SWMM DESIGNATION 1	⊠
SWMM DESIGNATION 2	⊠
SWMM DESIGNATION 3	⊠
SWMM DESIGNATION 4	⊠

**LANDSCAPE LEGEND**

	EXISTING	PROPOSED
TREE - CONIFEROUS	⊕	⊕
TREE - DECIDUOUS	⊕	⊕
SHRUB/BUSH	⊕	⊕
SHRUBS AND BUSHES	⊕	⊕
IRRIGATION BOX	⊕	⊕
IRRIGATION SPRINKLER	⊕	⊕
IRRIGATION VALVE	⊕	⊕
BOLLARD	⊕	⊕
FLAGPOLE	⊕	⊕

**STANDARD NOTES FOR EL PASO COUNTY CONSTRUCTION PLANS**

- ALL DRAINAGE AND ROADWAY CONSTRUCTION SHALL MEET THE STANDARDS AND SPECIFICATIONS OF THE CITY OF COLORADO SPRINGS/EL PASO COUNTY DRAINAGE CRITERIA MANUAL, VOLUMES 1 AND 2, AND THE EL PASO COUNTY ENGINEERING CRITERIA MANUAL.
- CONTRACTOR SHALL BE RESPONSIBLE FOR THE NOTIFICATION AND FIELD NOTIFICATION OF ALL EXISTING UTILITIES, WHETHER SHOWN ON THE PLANS OR NOT, BEFORE BEGINNING CONSTRUCTION. LOCATION OF EXISTING UTILITIES SHALL BE VERIFIED BY THE CONTRACTOR PRIOR TO CONSTRUCTION. CALL 811 TO CONTACT THE UTILITY NOTIFICATION CENTER OF COLORADO (UNCC).
- CONTRACTOR SHALL KEEP A COPY OF THESE APPROVED PLANS, THE GRADING AND EROSION CONTROL PLAN, THE STORMWATER MANAGEMENT PLAN (SWMP), THE SOIL AND GEOTECHNICAL REPORT, AND THE APPROPRIATE DESIGN AND CONSTRUCTION STANDARDS AND SPECIFICATIONS AT THE JOB SITE AT ALL TIMES, INCLUDING THE FOLLOWING:
  - EL PASO COUNTY ENGINEERING CRITERIA MANUAL (ECM)
  - CITY OF COLORADO SPRINGS/ EL PASO COUNTY DRAINAGE CRITERIA MANUAL, VOLUMES 1 AND 2
  - COLORADO DEPARTMENT OF TRANSPORTATION (CDOT) STANDARD SPECIFICATIONS AND BRIDGE CONSTRUCTION
  - CDOT M&S STANDARDS
- NOTWITHSTANDING ANYTHING DEPICTED IN THESE PLANS IN WORDS OR GRAPHIC REPRESENTATION, ALL DESIGN AND CONSTRUCTION RELATED TO ROADS, STORM DRAINAGE AND EROSION CONTROL SHALL CONFORM TO THE STANDARDS AND REQUIREMENTS OF THE MOST RECENT VERSIONS OF THE RELEVANT ADOPTED EL PASO COUNTY STANDARDS, INCLUDING THE LAND DEVELOPMENT CODE, THE ENGINEERING CRITERIA MANUAL, THE DRAINAGE CRITERIA MANUAL, AND THE DRAINAGE CRITERIA MANUAL VOLUME 2. ANY DEVIATIONS FROM REGULATIONS AND STANDARDS MUST BE REQUESTED, AND APPROVED, IN WRITING. ANY MODIFICATIONS NECESSARY TO MEET CRITERIA AFTER-THE-FACT WILL BE ENTIRELY THE DEVELOPER'S RESPONSIBILITY TO RECTIFY.
- IT IS THE DESIGN ENGINEER'S RESPONSIBILITY TO ACCURATELY SHOW EXISTING CONDITIONS, BOTH ONSITE AND OFFSITE, ON THE CONSTRUCTION PLANS. ANY MODIFICATIONS NECESSARY DUE TO CONFLICTS, OMISSIONS, OR CHANGED CONDITIONS WILL BE ENTIRELY THE DEVELOPER'S RESPONSIBILITY TO RECTIFY.
- CONTRACTOR SHALL SCHEDULE A PRE-CONSTRUCTION MEETING WITH EL PASO COUNTY PLANNING AND COMMUNITY DEVELOPMENT INSPECTIONS, PRIOR TO STARTING CONSTRUCTION.
- IT IS THE CONTRACTOR'S RESPONSIBILITY TO UNDERSTAND THE REQUIREMENTS OF ALL JURISDICTIONAL AGENCIES TO OBTAIN ALL REQUIRED PERMITS, INCLUDING BUT NOT LIMITED TO EL PASO COUNTY EROSION AND STORMWATER QUALITY CONTROL PERMIT (ESQCP), REGIONAL BUILDING FLOODPLAIN DEVELOPMENT PERMIT, U.S. ARMY CORPS OF ENGINEERS-ISSUED 401 AND/OR 404 PERMITS, AND COUNTY AND STATE FUGITIVE DUST PERMITS.
- CONTRACTOR SHALL NOT DEVIATE FROM THE PLANS WITHOUT FIRST OBTAINING WRITTEN APPROVAL FROM THE DESIGN ENGINEER AND PCD. CONTRACTOR SHALL NOTIFY THE DESIGN ENGINEER IMMEDIATELY UPON DISCOVERY OF ANY ERRORS OR INCONSISTENCIES.
- ALL STORM DRAIN PIPE SHALL BE CLASS III RCP UNLESS OTHERWISE NOTED AND APPROVED BY PLANNING AND COMMUNITY DEVELOPMENT.
- CONTRACTOR SHALL COORDINATE GEOTECHNICAL TESTING PER ECM STANDARDS. PAVEMENT DESIGN SHALL BE APPROVED BY EL PASO COUNTY PCD PRIOR TO PLACEMENT OF CURB AND GUTTER AND PAVEMENT.
- ALL CONSTRUCTION TRAFFIC MUST ENTER/EXIT THE SITE AT APPROVED CONSTRUCTION ACCESS POINTS.
- SIGHT VISIBILITY TRIANGLES ARE IDENTIFIED IN THE PLANS SHALL BE PROVIDED AT ALL INTERSECTIONS. OBSTRUCTIONS GREATER THAN 18 INCHES ABOVE FLOWLINE ARE NOT ALLOWED IN SIGHT TRIANGLES.
- SIGNING AND STRIPING SHALL COMPLY WITH EL PASO COUNTY DEPARTMENT OF PUBLIC WORKS AND MUTCD CRITERIA.
- CONTRACTOR SHALL OBTAIN ANY PERMITS REQUIRED BY EL PASO COUNTY DEPARTMENT OF PUBLIC WORKS, INCLUDING WORK WITHIN THE RIGHT-OF-WAY AND SPECIAL TRANSPORT PERMITS.
- THE LIMITS OF CONSTRUCTION SHALL REMAIN WITHIN THE PROPERTY LINE UNLESS OTHERWISE NOTED. THE OWENER/DEVELOPER SHALL OBTAIN WRITTEN PERMISSION AND EASEMENTS, WHERE REQUIRED, FROM ADJOINING PROPERTY OWNER(S) PRIOR TO ANY OFF-SITE DISTURBANCE, GRADING, OR CONSTRUCTION.



RECORD DRAWINGS  
06/23



**ENGINEER'S STATEMENT**  
 PREPARED UNDER MY DIRECT SUPERVISION AND ON BEHALF OF JR ENGINEERING  
 Mike Bramlett  
 32314  
 08/03/22  
 DATE

UNTIL SUCH TIME AS THESE DRAWINGS ARE APPROVED BY THE APPROPRIATE REVIEWING AGENCIES, JR ENGINEERING APPROVES THEIR USE. THESE DRAWINGS ARE DESIGNATED BY WRITTEN AUTHORIZATION.

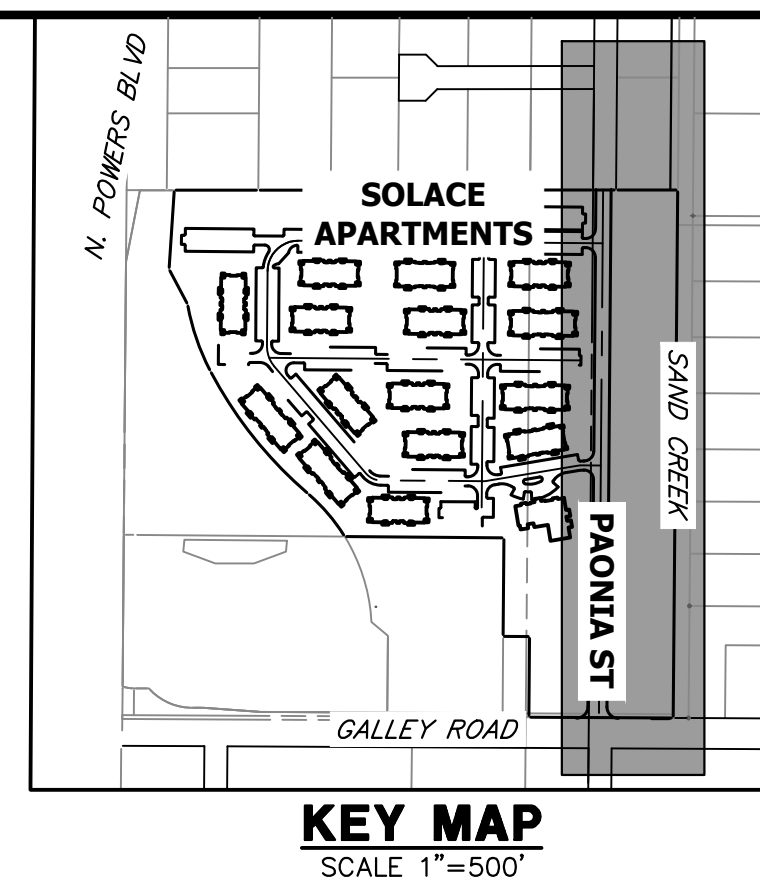
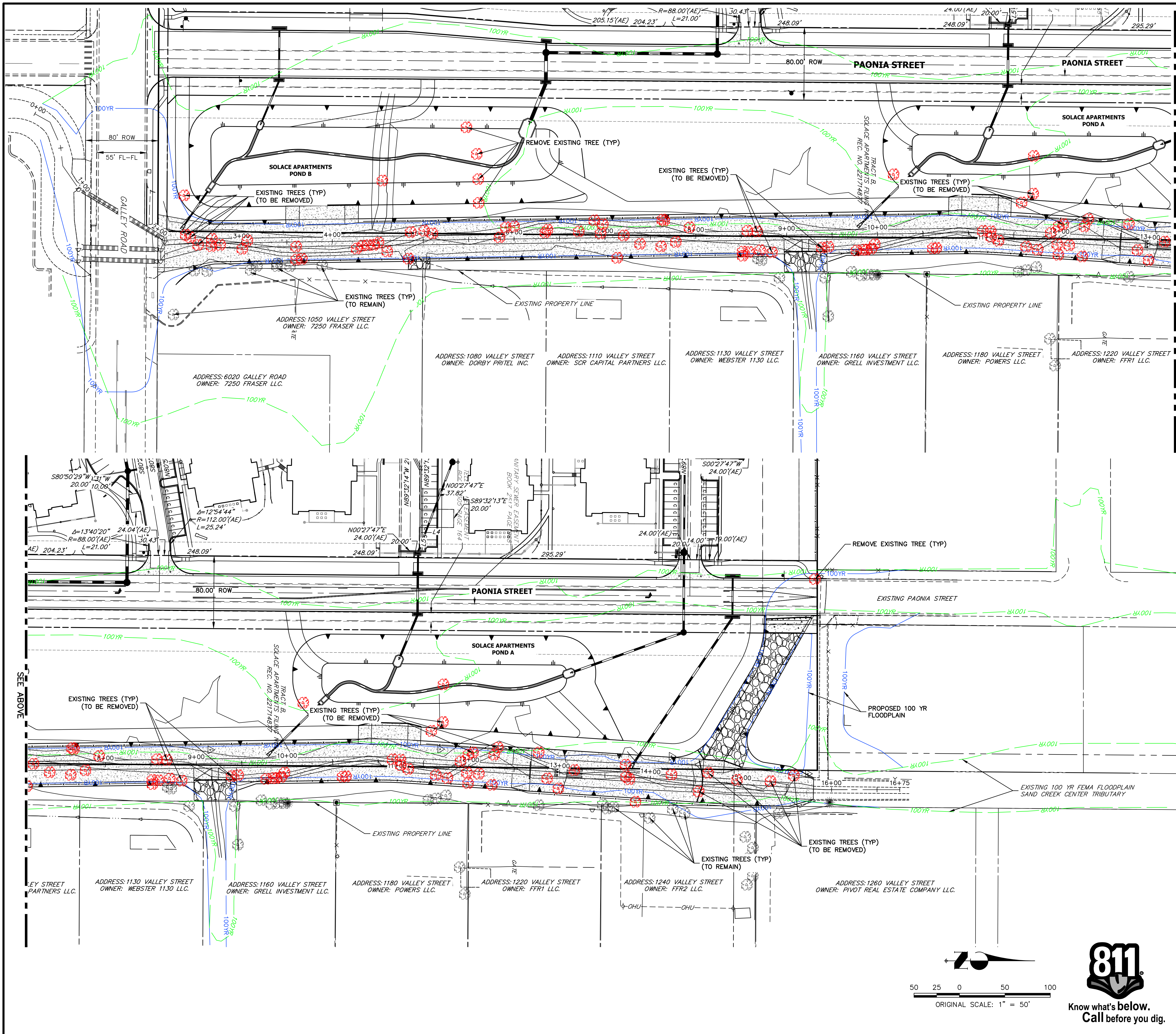
PREPARED FOR  
**CS POWERS & GALLEY LLC**  
 510 S. NEIL ST.  
 CHAMPAIGN, IL 61820  
 OFFICE PHONE (734) 216-2577

**J.R. ENGINEERING**  
 A Westman Company  
 Centennial 303-740-9888 • Colorado Springs 719-588-2583  
 Fort Collins 970-491-9888 • www.jrengineering.com

BY	DATE	REVISION	No.	H-SCALE	N/A	V-SCALE	N/A	DATE	DESIGNED BY	JRM	JRM	DRAWN BY	JRM	CHECKED BY

SAND CREEK CENTER TRIBUTARY  
 GENERAL NOTES

SHEET 2 OF 10  
 JOB NO. 25174.00



UNTIL SUCH TIME AS THESE DRAWINGS ARE APPROVED BY THE APPROPRIATE REVIEWING AGENCIES, OR ENGINEERING APPROVES THEIR USE, THESE DRAWINGS ARE DESIGNATED BY WRITTEN AUTHORIZATION.

PREPARED FOR  
**CS POWERS & GALLEY LLC**  
 510 S. NEIL ST.  
 CHAMPAIGN, IL 61820  
 OFFICE PHONE (734) 216-2577

**J.R. ENGINEERING**  
 A Westman Company  
 Centennial 300-740-9888 • Colorado Springs 719-583-2583  
 Fort Collins 970-491-9888 • www.jrengineering.com

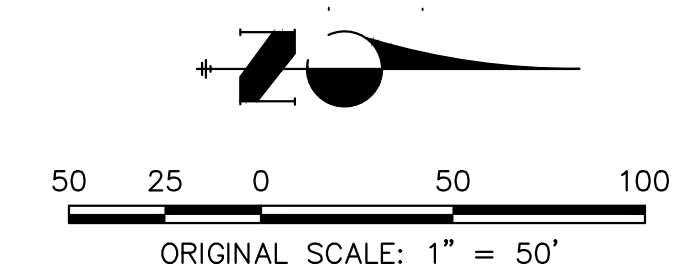
BY	DATE	NO.	REVISION

H-SCALE	V-SCALE	DATE	DESIGNED BY	DRAWN BY	CHECKED BY
1"=50'	N/A	08/03/22	JBP	JBP	

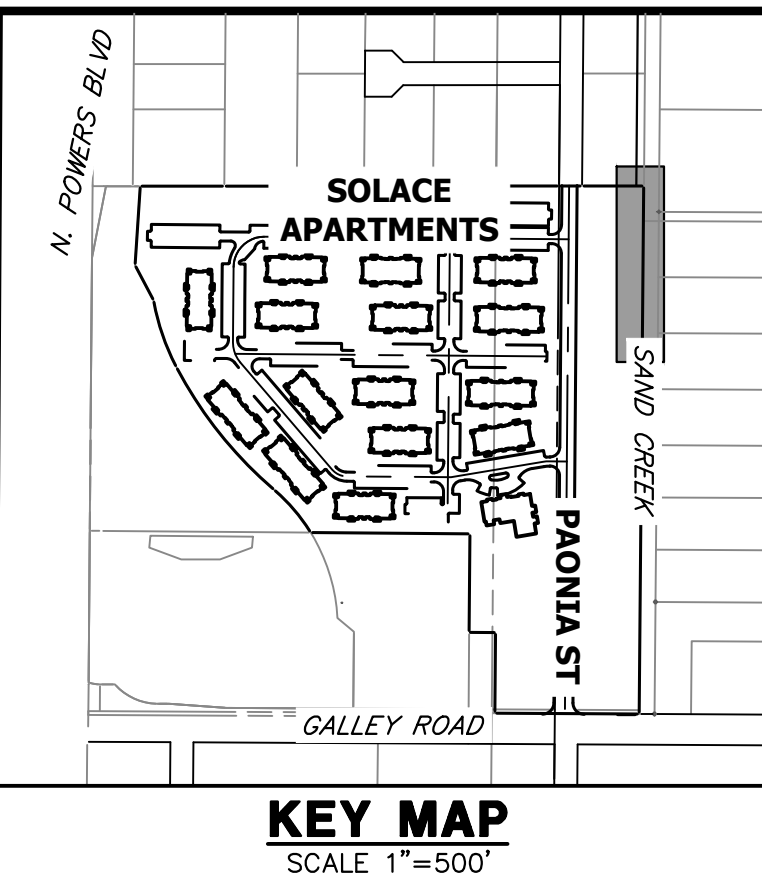
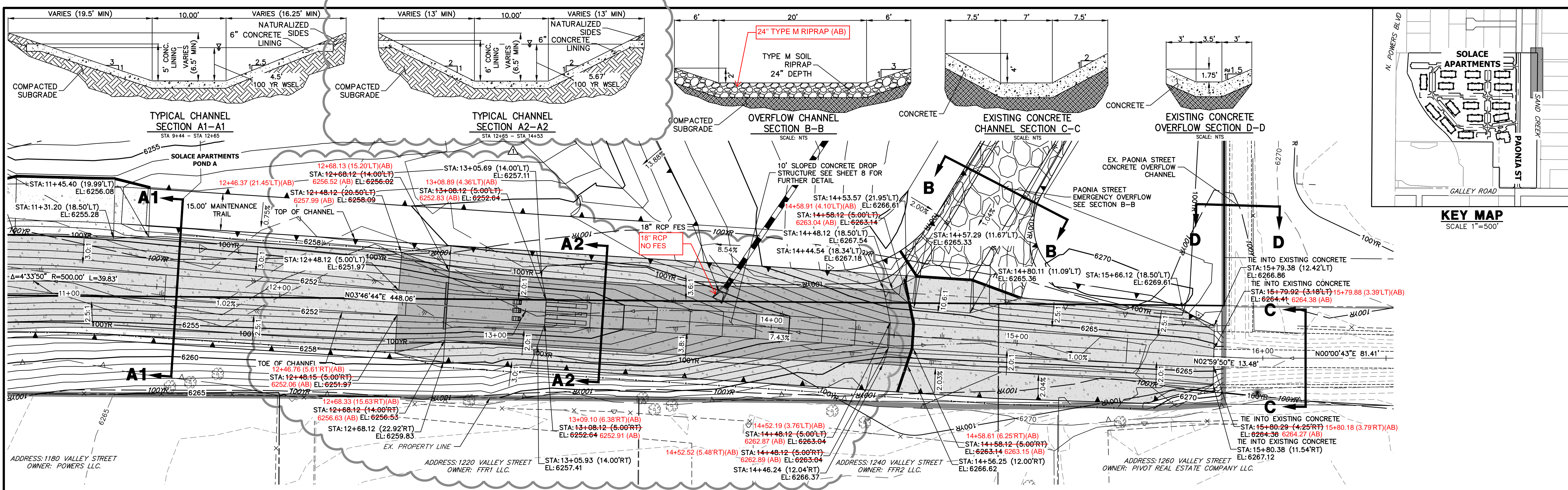


*Mike Bramlett*  
 12/27/2023

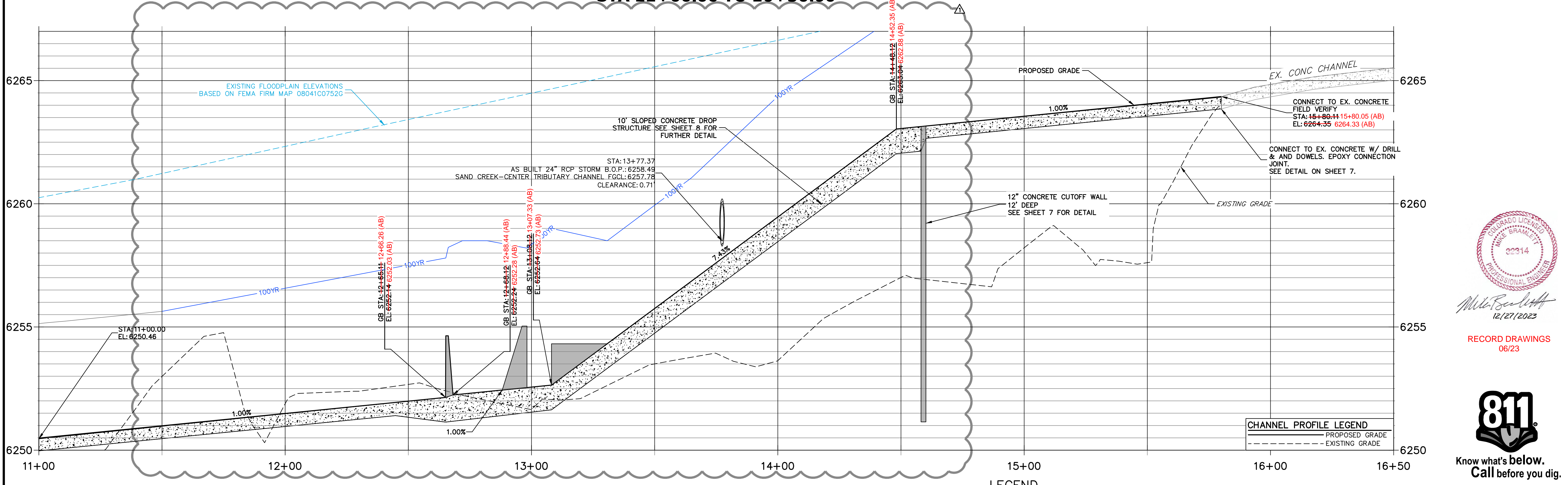
RECORD DRAWINGS  
 06/23



**ENGINEER'S STATEMENT**  
 PREPARED UNDER MY DIRECT SUPERVISION AND ON BEHALF OF JR ENGINEERING  
*Mike Bramlett*  
 32314  
 DATE 08/03/22  
 FOR AND ON BEHALF OF JR ENGINEERING

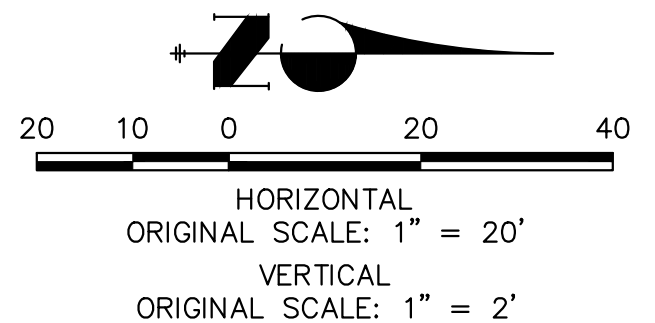


**SAND CREEK-CENTER TRIBUTARY CHANNEL PROFILE (4)  
STA 11+00.00 TO 16+50.00**



**FENCING NOTES**

- FENCING SHALL BE PROVIDED ALONG THE EXTENTS OF THE CHANNEL, EXCEPT FOR AT LOCATIONS OF MAINTENANCE ACCESS.
- FENCING SHALL CONFORM TO THE LANDSCAPING PLANS FOR SOLACE OF COLORADO SPRINGS SP-20-001, BY NES.

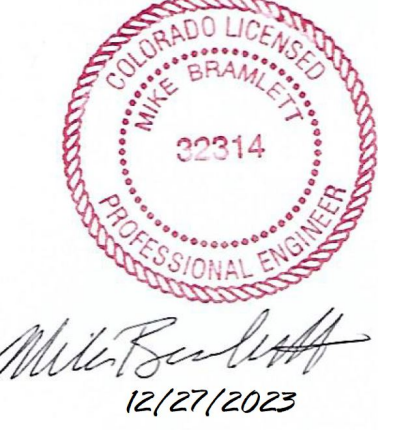


**CHANNEL PROFILE LEGEND**

—	PROPOSED GRADE
- - -	EXISTING GRADE

**ENGINEER'S STATEMENT**

PREPARED UNDER MY DIRECT SUPERVISION AND ON BEHALF OF JR ENGINEERING  
 Mike Bramlett  
 32314  
 DATE 08/03/22  
 MIKE A. BRAMLETT, P.E.  
 COLORADO P.E. 32314  
 FOR AND ON BEHALF OF JR ENGINEERING



RECORD DRAWINGS  
06/23



UNTIL SUCH TIME AS THESE DRAWINGS ARE APPROVED BY THE APPROPRIATE REVIEWING AGENCIES, JR ENGINEERING APPROVES THEIR USES DESIGNATED BY PARTISES DESIGNATED BY WRITTEN AUTHORIZATION.

PREPARED FOR  
CS POWERS & GALLEY LLC  
510 S. NEIL ST.  
CHAMPAIGN, IL 61820  
OFFICE PHONE (734) 216-2577

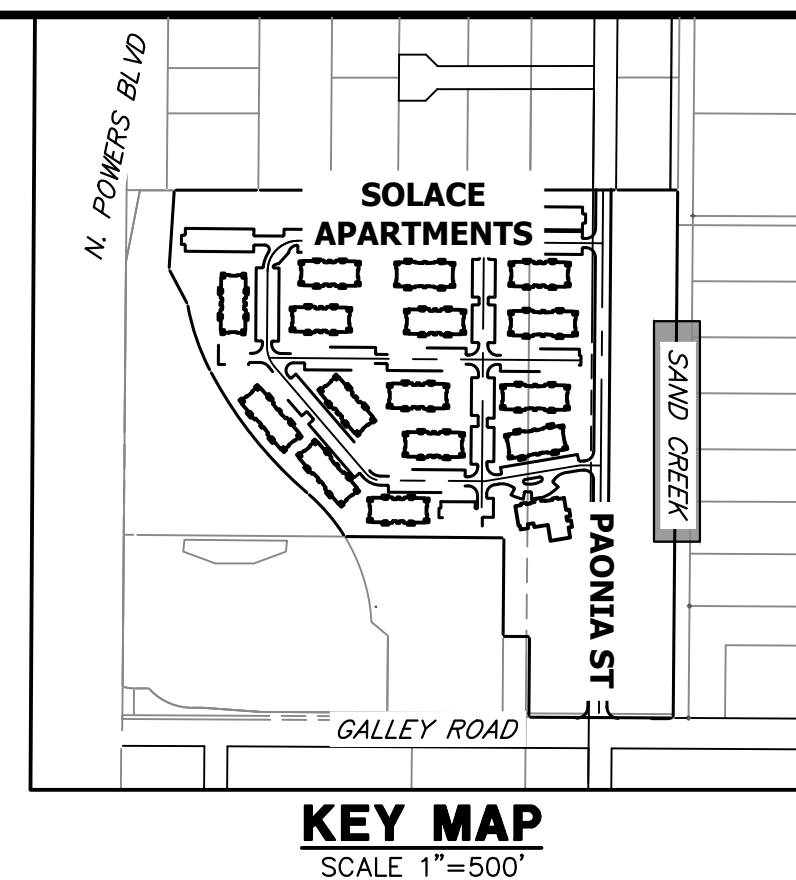
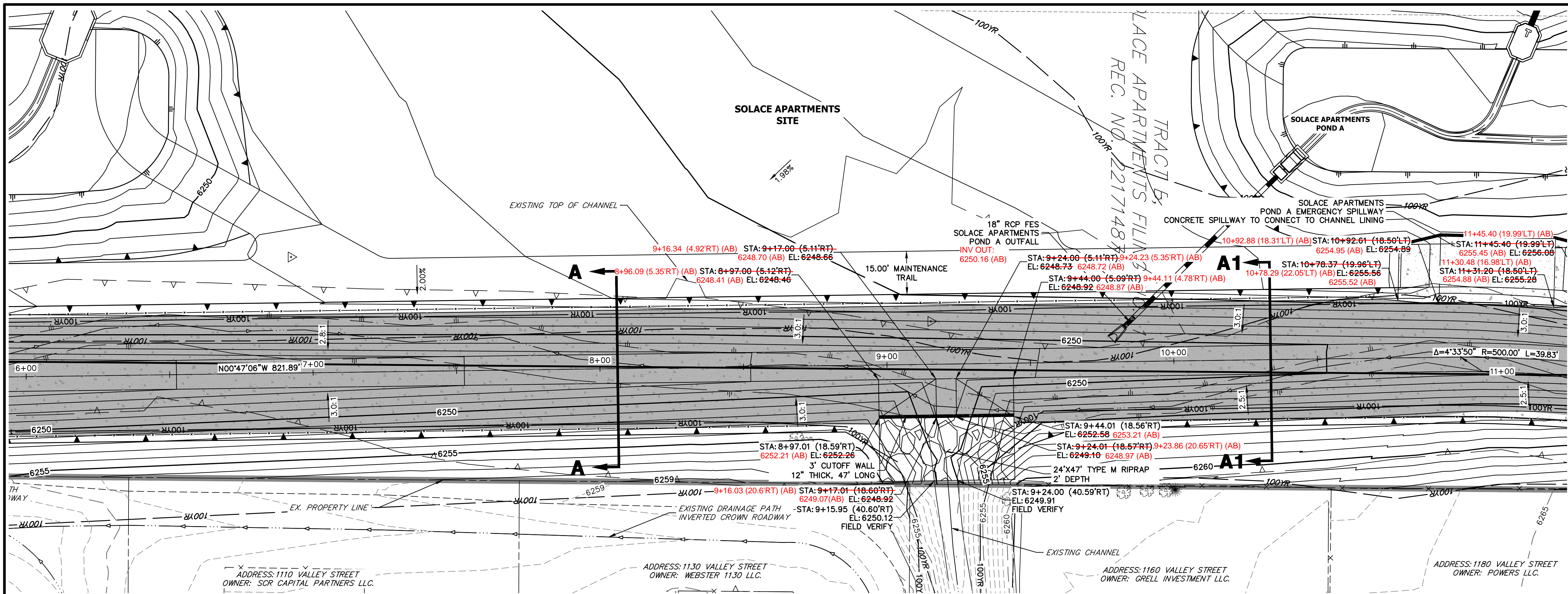
J.R. ENGINEERING  
A Westman Company  
Central 303-740-9888 • Colorado Springs 719-588-2583  
Fort Collins 970-491-9888 • www.jrengineering.com

No.	REVISION	BY	DATE
1	CHANNEL DROP CHANGES	JBP	11/07/22

H-SCALE 1"=20'  
V-SCALE 1"=2'  
DATE 08/03/22  
DESIGNED BY JBP  
DRAWN BY JBP  
CHECKED BY

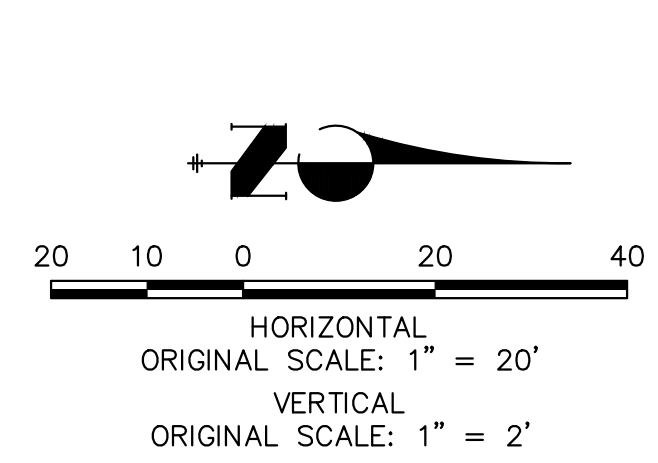
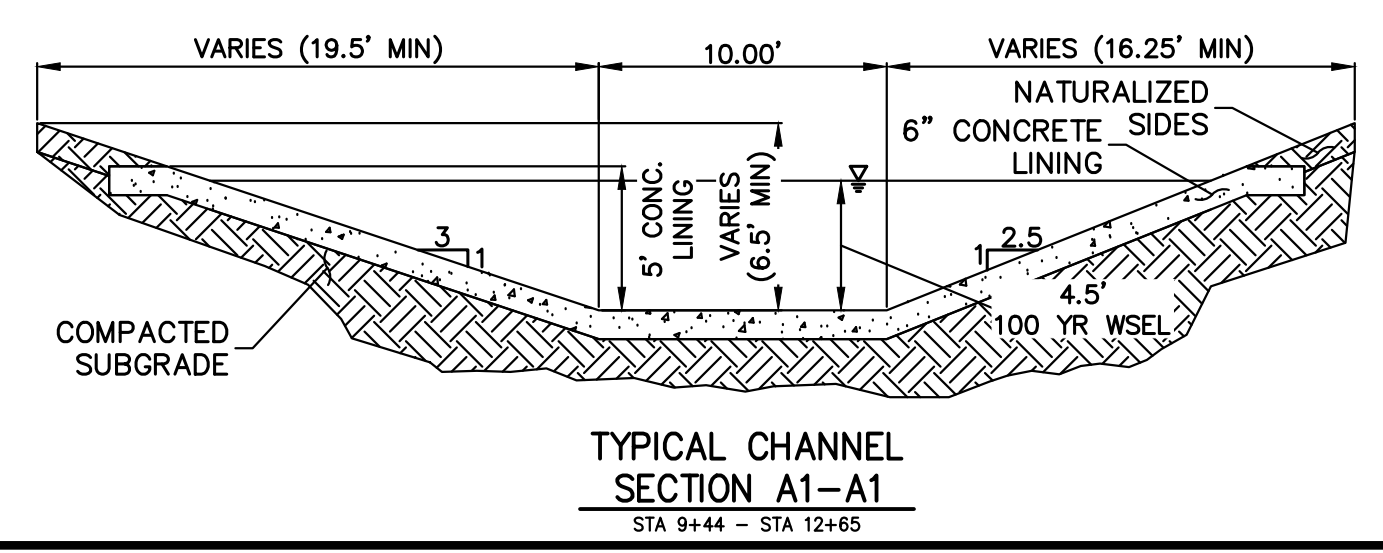
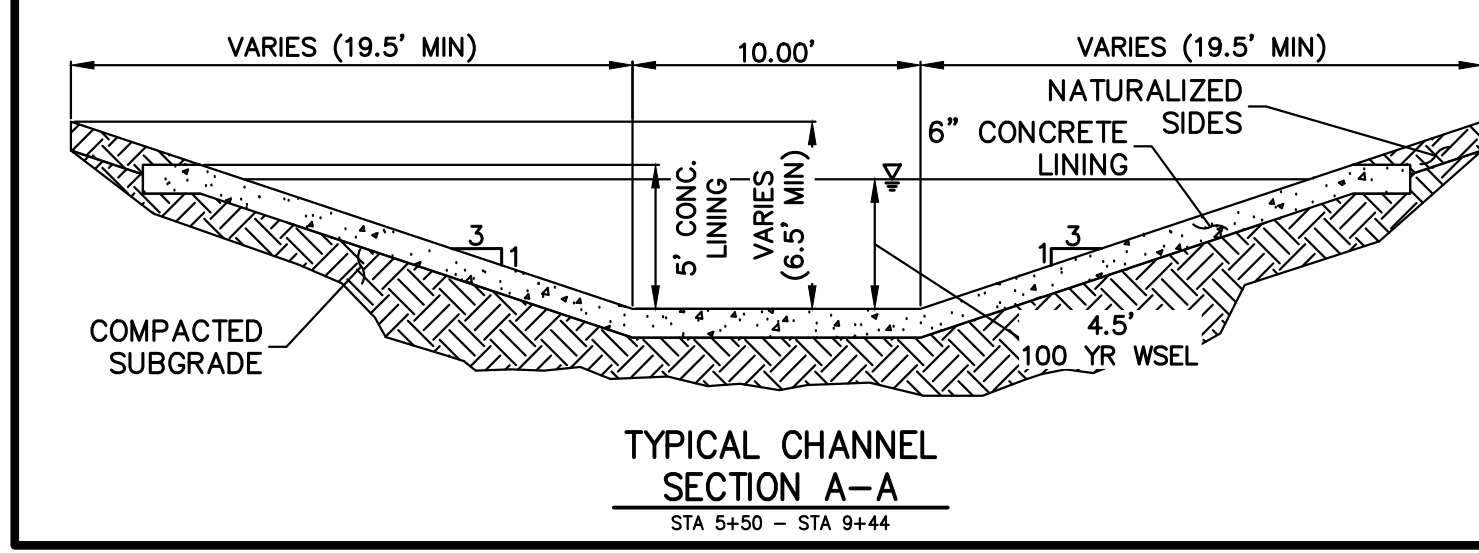
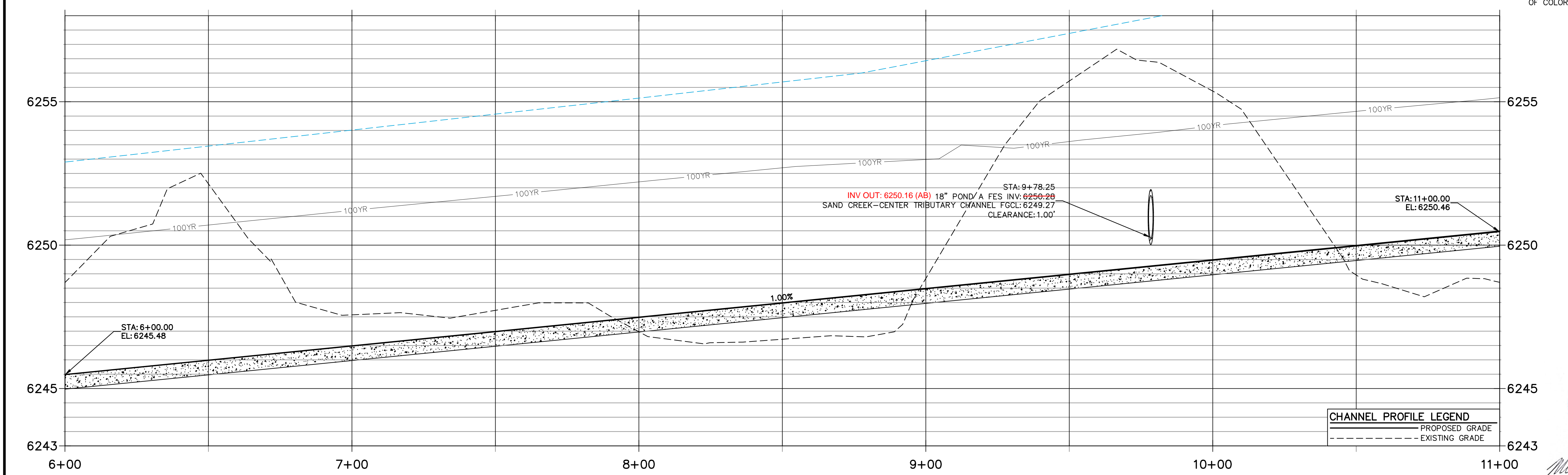
SAND CREEK CENTER TRIBUTARY CHANNEL PLAN AND PROFILES

SHEET 4 OF 10  
JOB NO. 25174.00



**SAND CREEK-CENTER TRIBUTARY CHANNEL PROFILE (3)  
STA 6+00.00 TO 11+00.00**

- FENCING NOTES**
- FENCING SHALL BE PROVIDED ALONG THE EXTENTS OF THE CHANNEL, EXCEPT FOR AT LOCATIONS OF MAINTENANCE ACCESS.
  - FENCING SHALL CONFORM TO THE LANDSCAPING PLANS FOR SOLACE OF COLORADO SPRINGS SP-20-001, BY NES.



**CHANNEL PROFILE LEGEND**

	PROPOSED GRADE
	EXISTING GRADE



RECORD DRAWINGS  
06/23



**ENGINEER'S STATEMENT**  
PREPARED UNDER MY DIRECT SUPERVISION AND ON BEHALF OF JR ENGINEERING  
Mike Bramlett  
32314  
DATE 08/03/22  
FOR AND ON BEHALF OF JR ENGINEERING

UNTIL SUCH TIME AS THESE DRAWINGS ARE APPROVED BY THE APPROPRIATE REVIEWING AGENCIES, OR ENGINEERING APPROVES THEIR USE, THESE DRAWINGS ARE DESIGNATED BY WRITTEN AUTHORIZATION.

PREPARED FOR  
**CS POWERS & GALLEY LLC**  
510 S. NEIL ST.  
CHAMPAIGN, IL 61820  
OFFICE PHONE (734) 216-2577

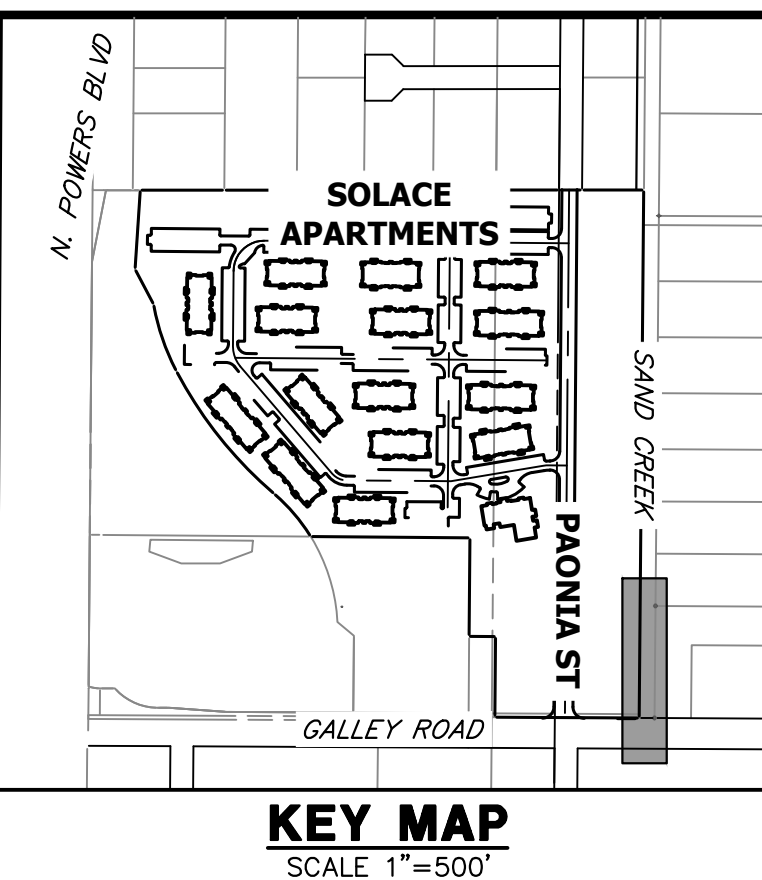
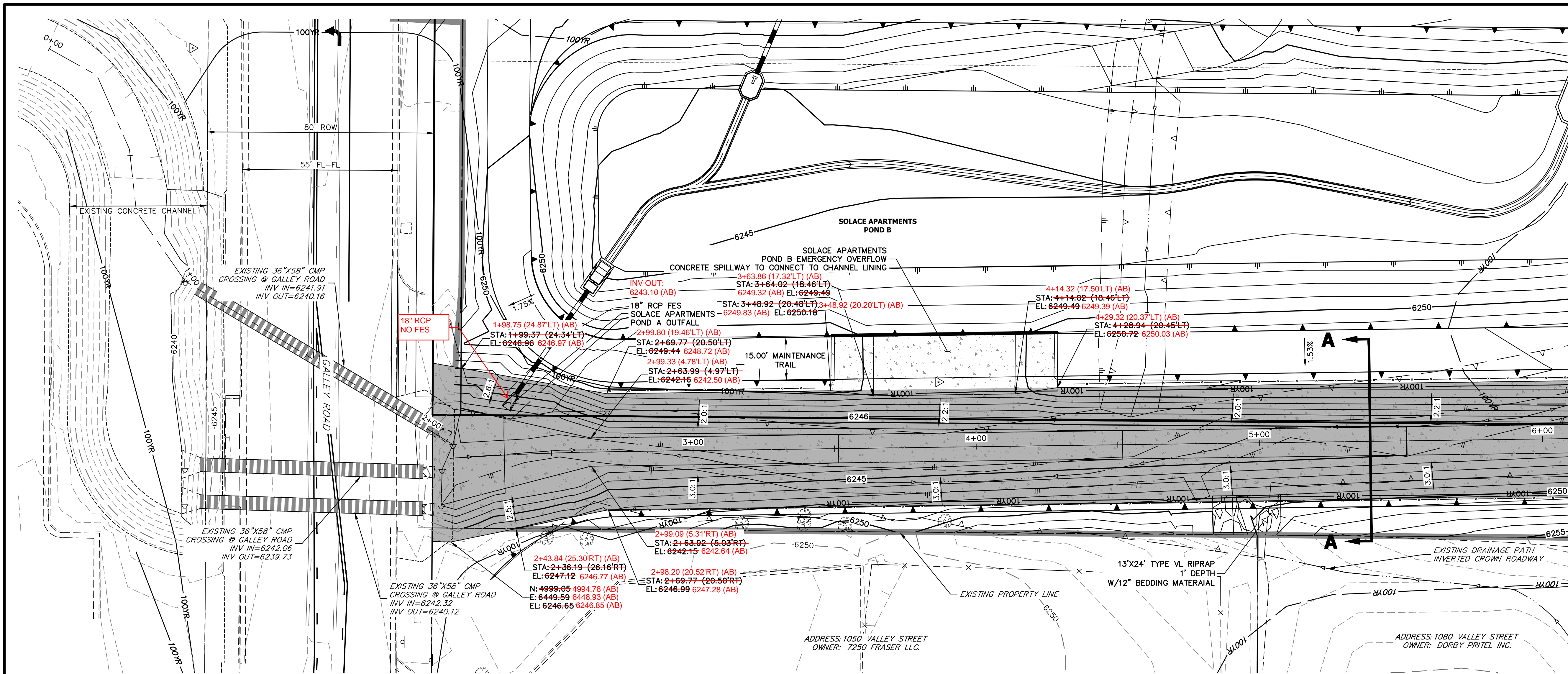
**J.R. ENGINEERING**  
A Westman Company  
Central 303-740-9383 • Colorado Springs 719-583-2583  
Fort Collins 970-491-9888 • www.jrengineering.com

BY	DATE	REVISION

H-SCALE 1"=20'  
V-SCALE 1"=2'  
DATE 08/03/22  
DESIGNED BY JBP  
DRAWN BY JBP  
CHECKED BY

**SAND CREEK CENTER TRIBUTARY CHANNEL PLAN AND PROFILES**

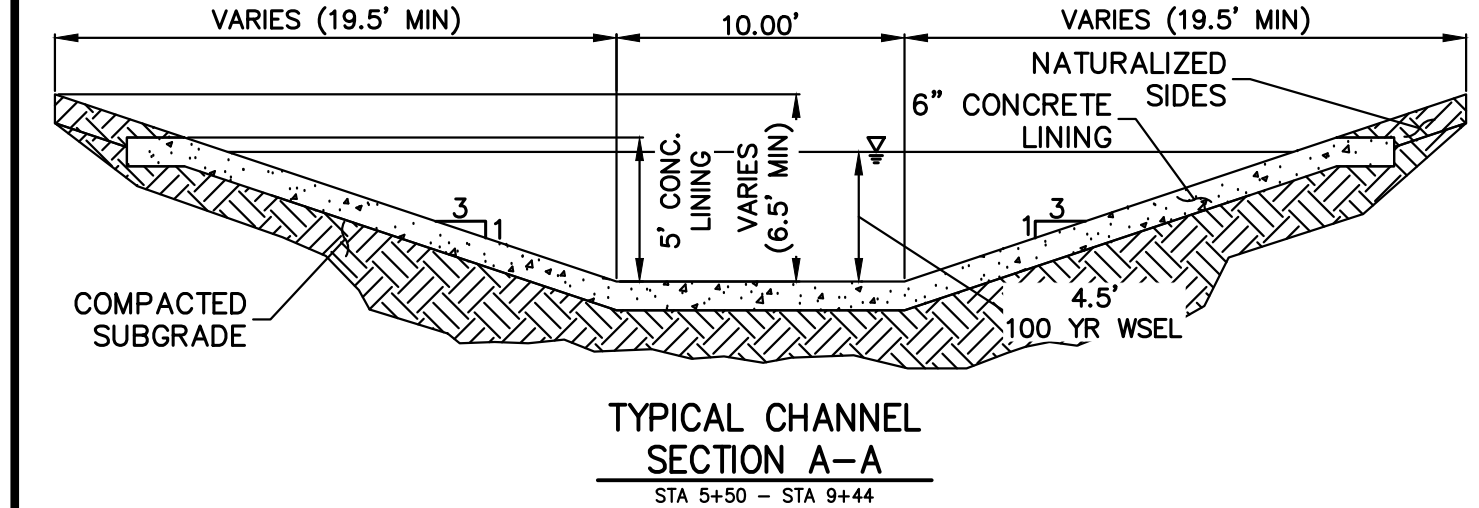
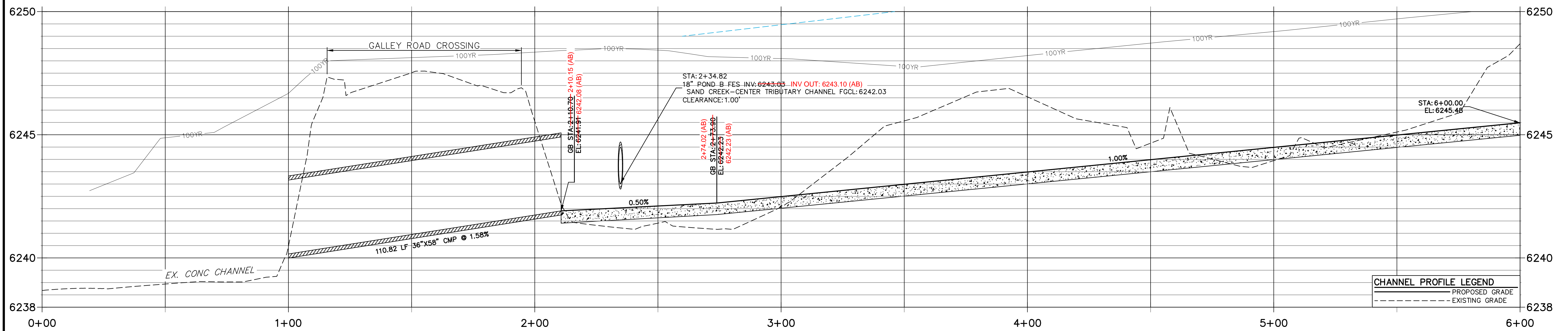
SHEET 5 OF 10  
JOB NO. 25174.00



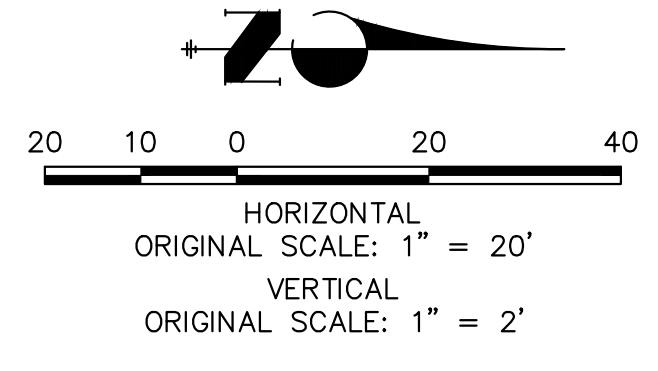
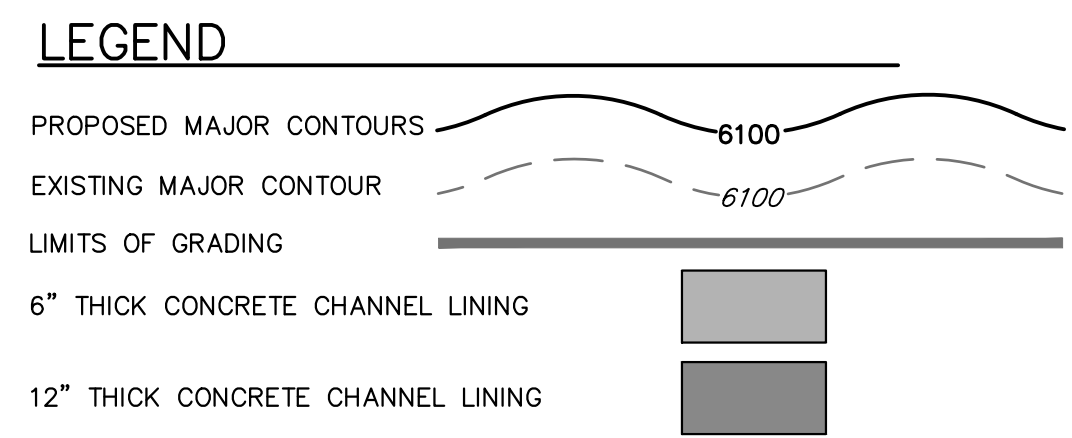
**SAND CREEK-CENTER TRIBUTARY CHANNEL PROFILE  
STA 0+00.00 TO 6+00.00**



*Mike Bramlett*  
12/27/2023

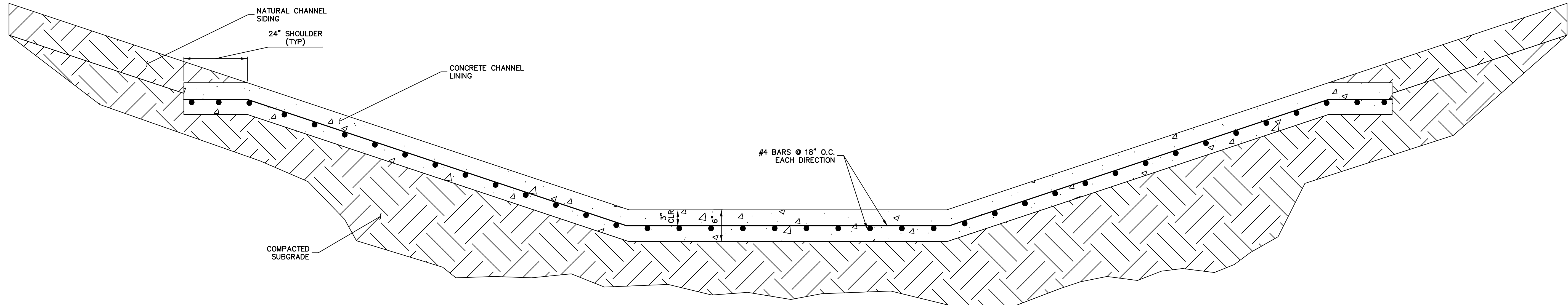


- FENCING NOTES**
- FENCING SHALL BE PROVIDED ALONG THE EXTENTS OF THE CHANNEL, EXCEPT FOR AT LOCATIONS OF MAINTENANCE ACCESS.
  - FENCING SHALL CONFORM TO THE LANDSCAPING PLANS FOR SOLACE OF COLORADO SPRINGS SP-20-001, BY NES.

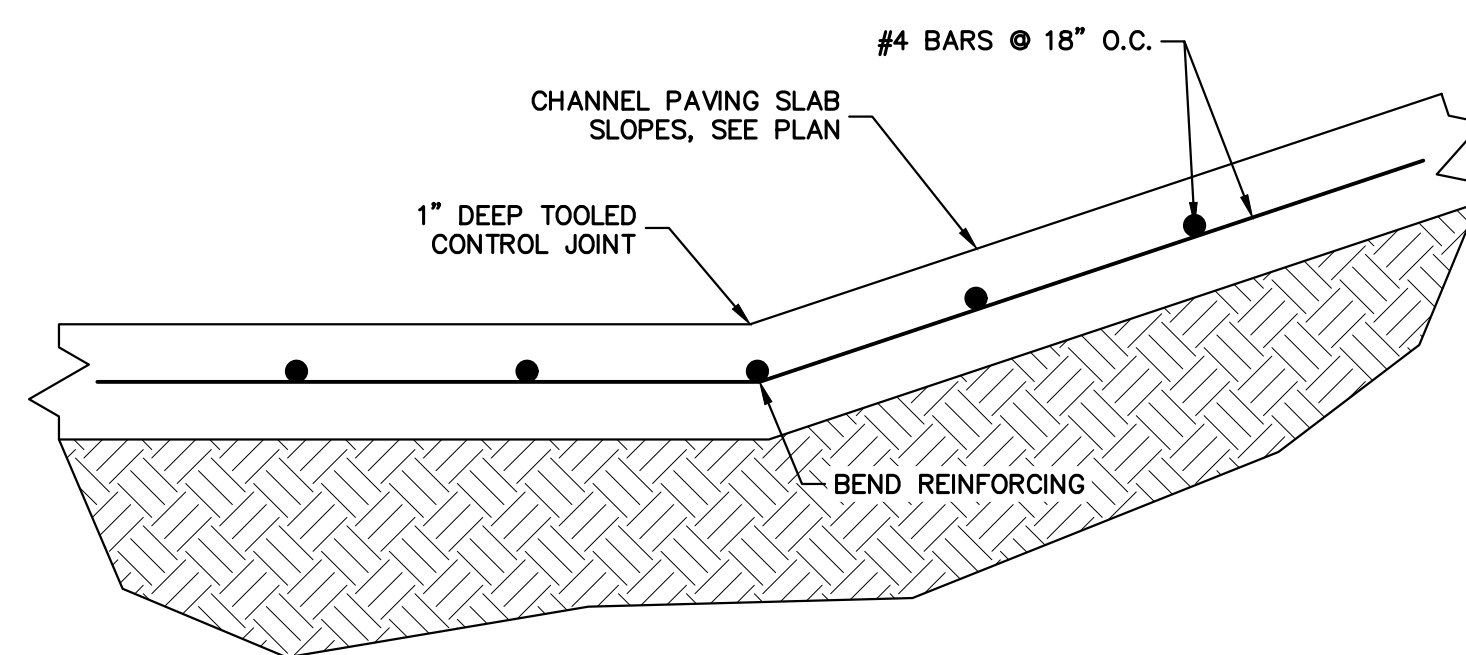


**ENGINEER'S STATEMENT**  
PREPARED UNDER MY DIRECT SUPERVISION AND ON BEHALF OF JR ENGINEERING  
*Mike Bramlett*  
32314  
DATE: 08/03/22

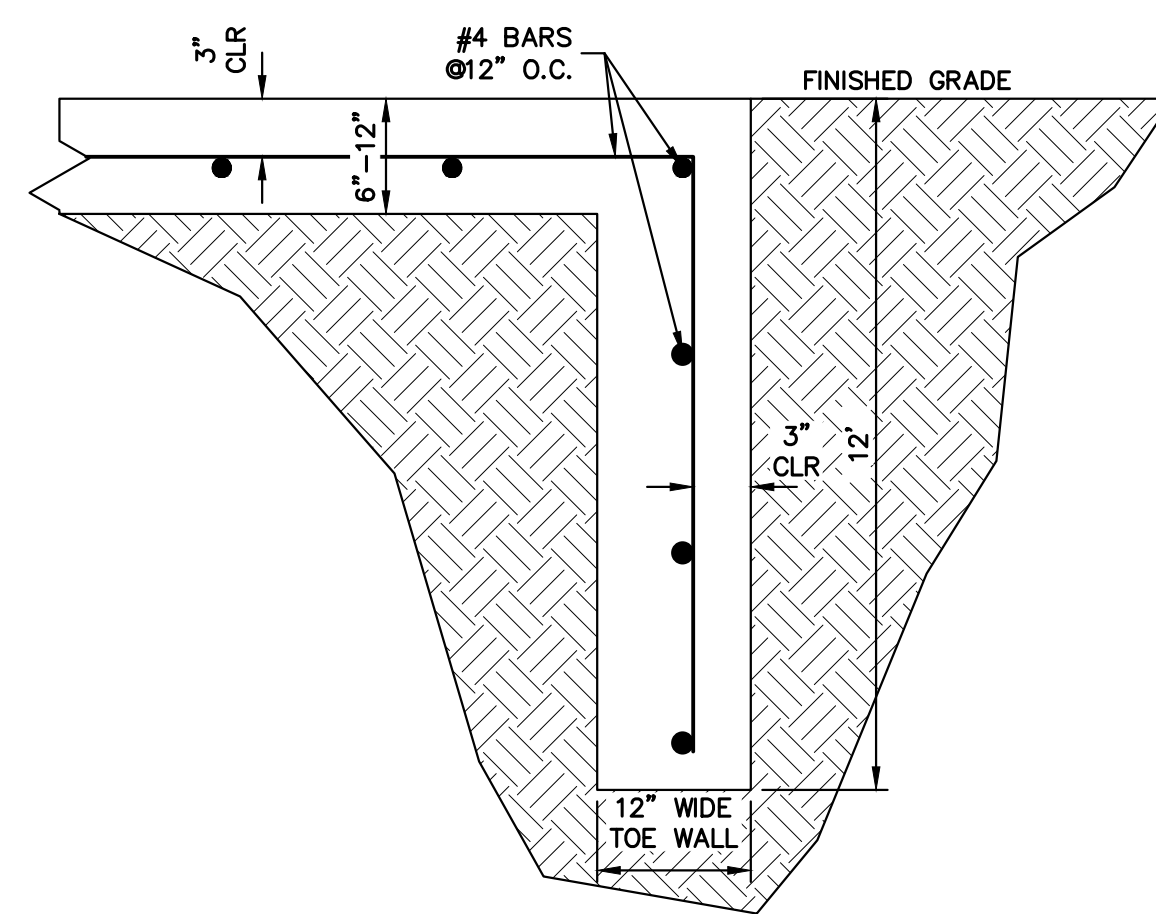
PREPARED FOR <b>CS POWERS &amp; GALLEY LLC</b> 510 S. NEIL ST. CHAMPAIGN, IL 61820 OFFICE PHONE (734) 216-2577	UNTIL SUCH TIME AS THESE DRAWINGS ARE APPROVED BY THE APPROPRIATE REVIEWING AGENCIES, OR ENGINEERING APPROVES THEIR USE, THESE DRAWINGS ARE DESIGNATED BY WRITTEN AUTHORIZATION.
BY DATE No. REVISION H-SCALE 1"=20' V-SCALE 1"=2' DATE 08/03/22 DESIGNED BY JBP DRAWN BY JBP CHECKED BY	SAND CREEK CENTER TRIBUTARY CHANNEL PLAN AND PROFILES SHEET 6 OF 10 JOB NO. 25174.00



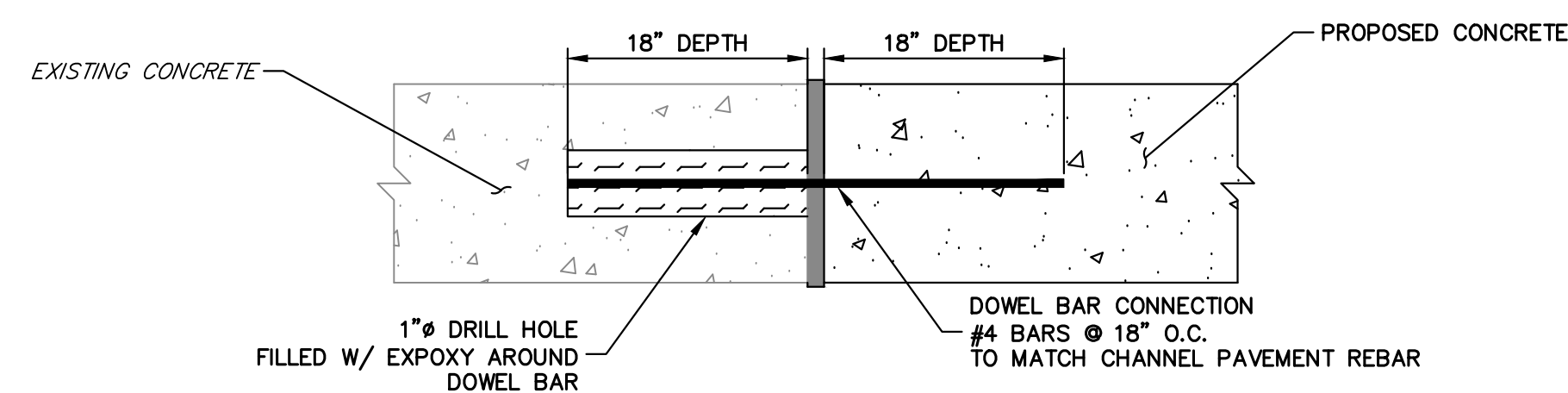
TYPICAL CONCRETE CHANNEL SECTION  
SCALE: N.T.S.



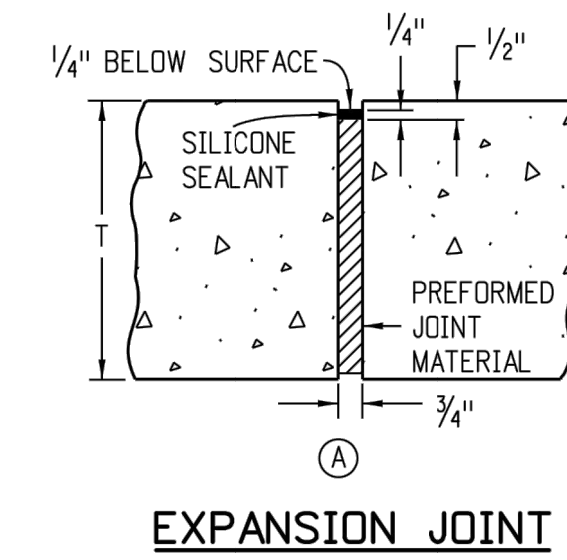
SLOPE CHANGE AT CHANNEL PAVING SLAB  
SCALE: N.T.S.



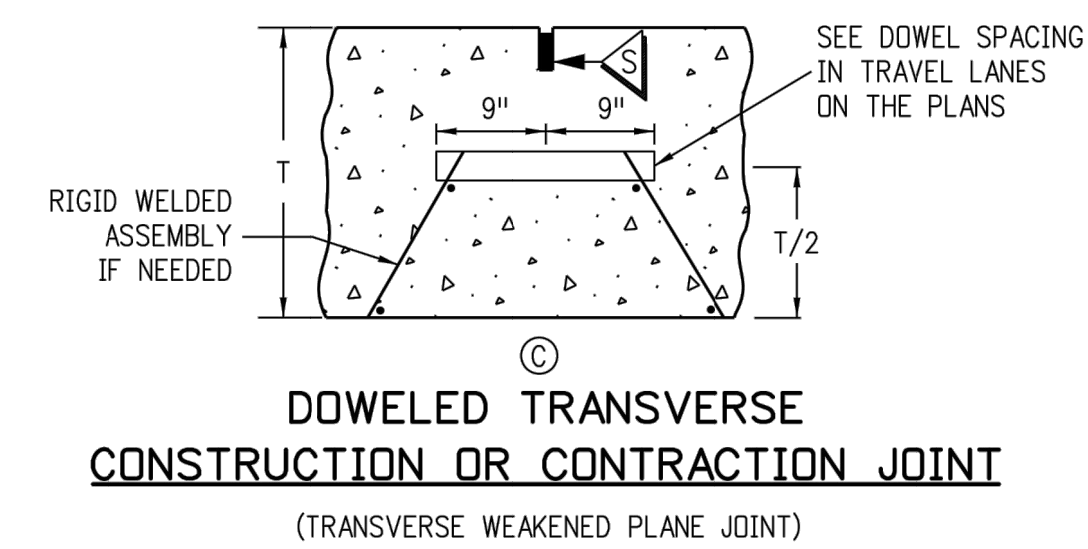
CUTOFF/APRON TOE WALL  
SCALE: N.T.S.



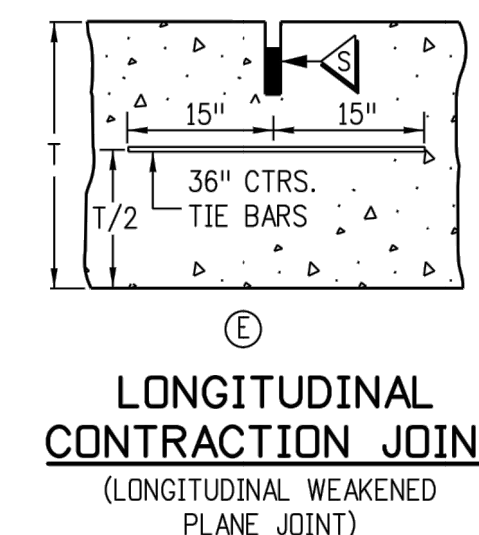
DOWEL CONNECTION TO EXISTING  
SCALE: N.T.S.



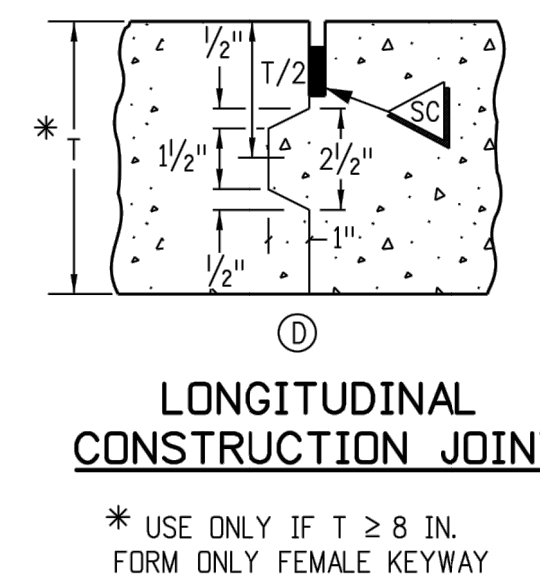
EXPANSION JOINT



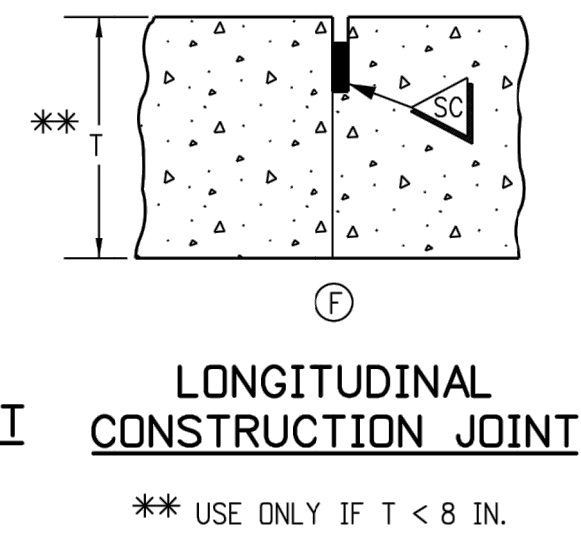
DOWELED TRANSVERSE CONSTRUCTION OR CONTRACTION JOINT  
(TRANSVERSE WEAKENED PLANE JOINT)



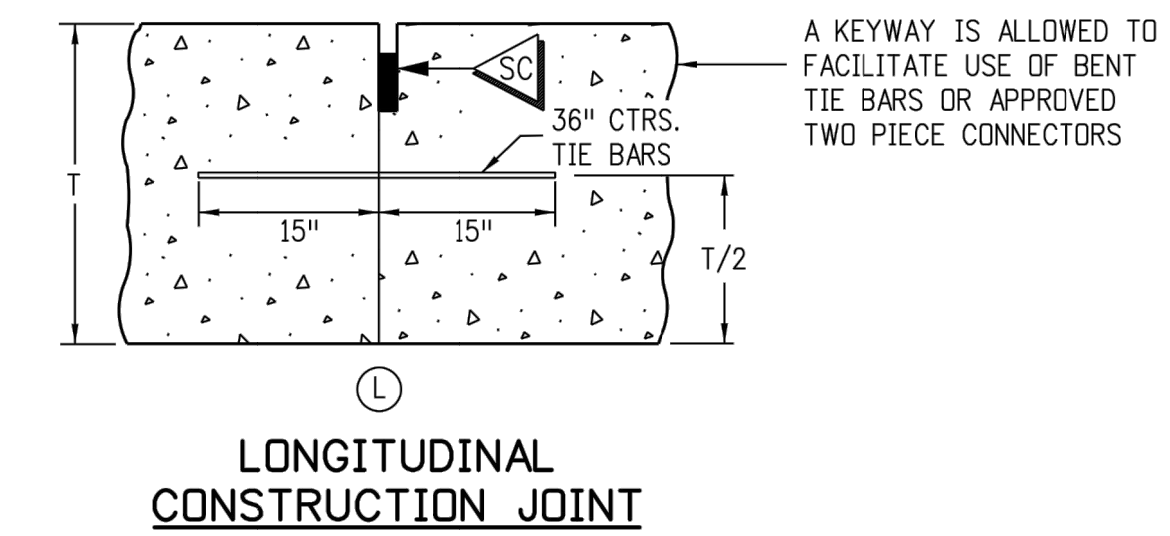
LONGITUDINAL CONTRACTION JOINT  
(LONGITUDINAL WEAKENED PLANE JOINT)



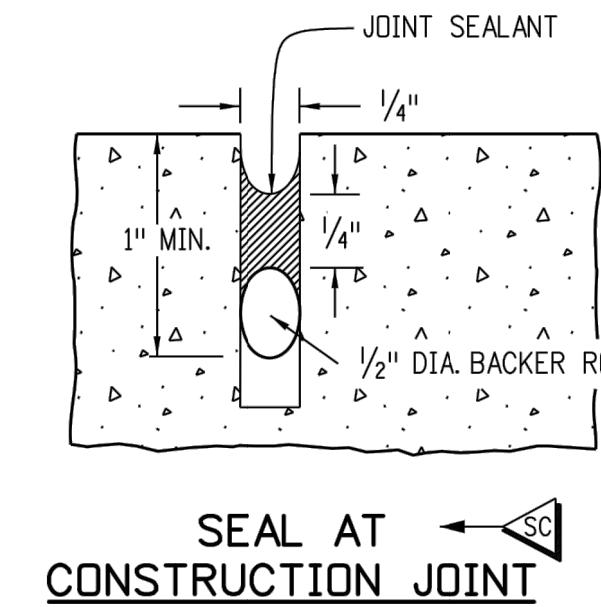
LONGITUDINAL CONSTRUCTION JOINT  
\* USE ONLY IF T ≥ 8 IN.  
FORM ONLY FEMALE KEYWAY



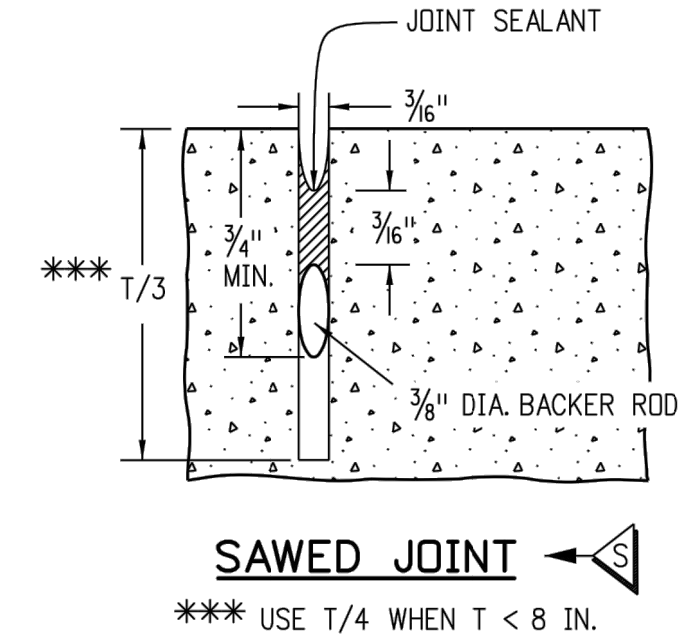
LONGITUDINAL CONSTRUCTION JOINT  
\*\* USE ONLY IF T < 8 IN.



LONGITUDINAL CONSTRUCTION JOINT  
A KEYWAY IS ALLOWED TO FACILITATE USE OF BENT TIE BARS OR APPROVED TWO PIECE CONNECTORS



SEAL AT CONSTRUCTION JOINT



SAWED JOINT  
\*\*\* USE T/4 WHEN T < 8 IN.



Mike Bramlett  
12/27/2023

RECORD DRAWINGS  
06/23



Know what's below.  
Call before you dig.

ENGINEER'S STATEMENT

PREPARED UNDER MY DIRECT SUPERVISION AND ON BEHALF OF JR ENGINEERING

Mike Bramlett  
32314  
DATE 08/03/22

MIKE A. BRAMLETT, P.E.  
COLORADO P.E. 32314  
FOR AND ON BEHALF OF JR ENGINEERING

UNTIL SUCH TIME AS THESE DRAWINGS ARE APPROVED BY THE APPROPRIATE REVIEWING AGENCIES, OR ENGINEERING APPROVES THEIR USE, THESE DRAWINGS ARE DESIGNATED BY WRITTEN AUTHORIZATION.

PREPARED FOR  
CS POWERS & GALLEY LLC  
510 S. NEIL ST.  
CHAMPAIGN, IL 61820  
OFFICE PHONE (734) 216-2577

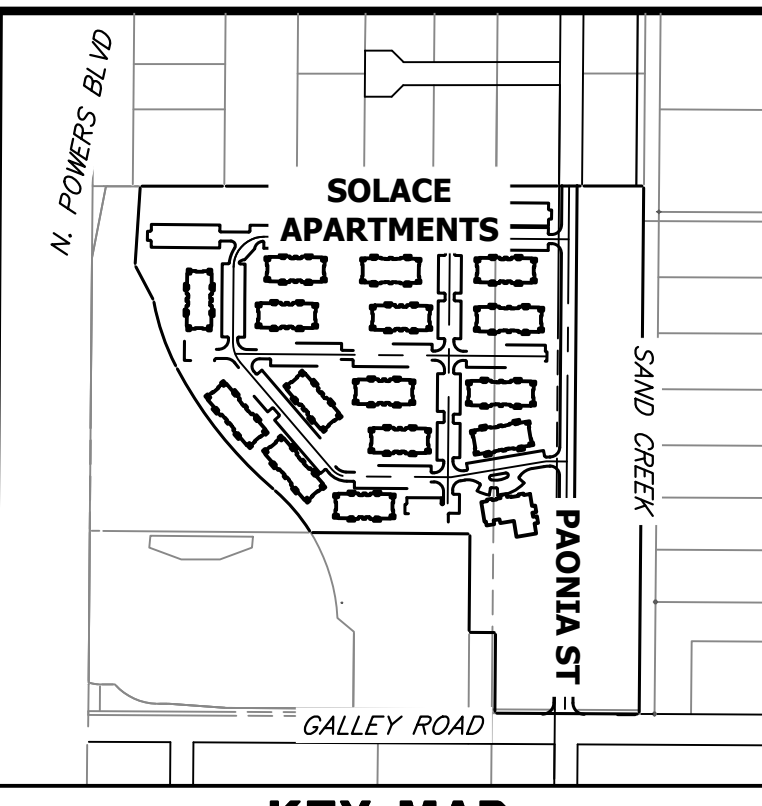
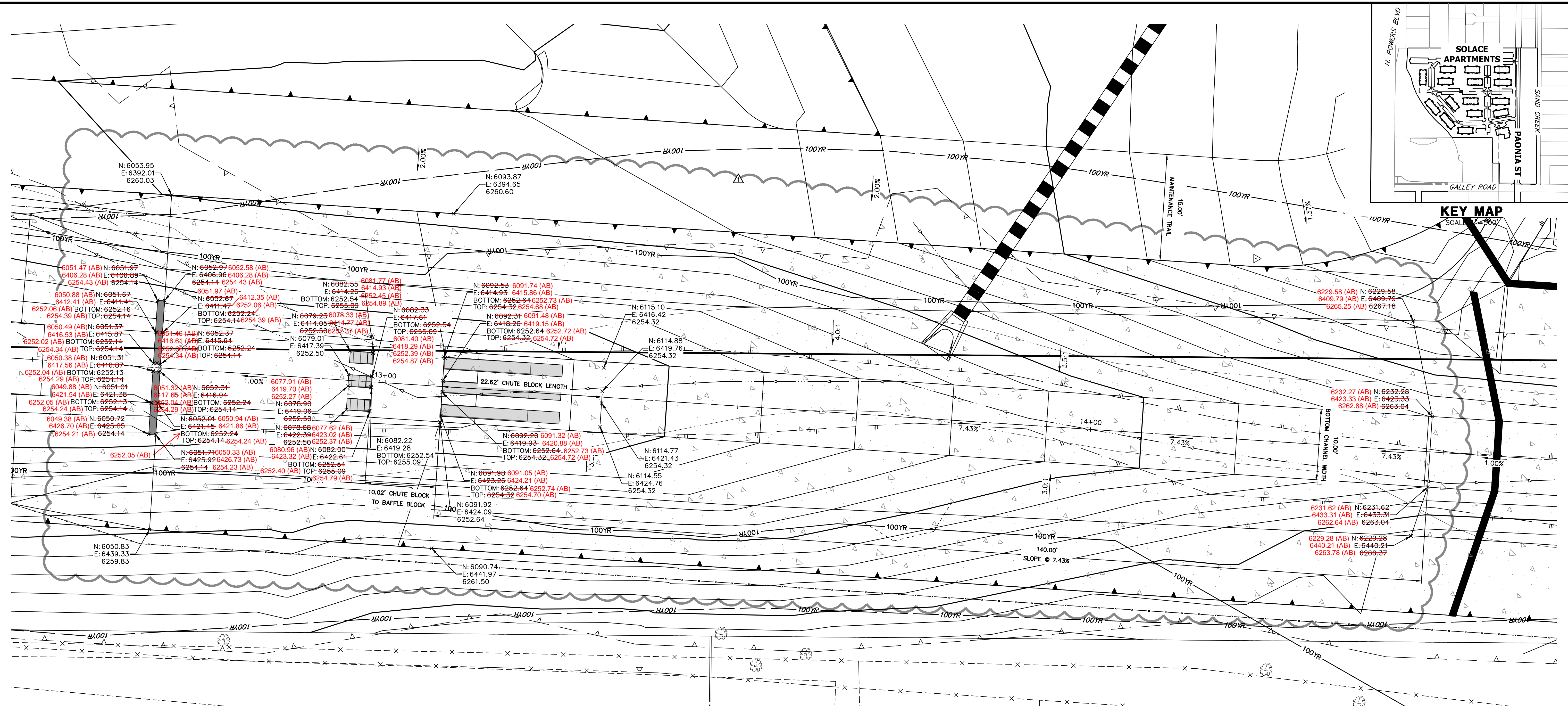
J.R. ENGINEERING  
A Westman Company  
Central 303-740-9888 • Colorado Springs 719-583-2683  
Fort Collins 970-491-9888 • www.jrengineering.com

BY	DATE

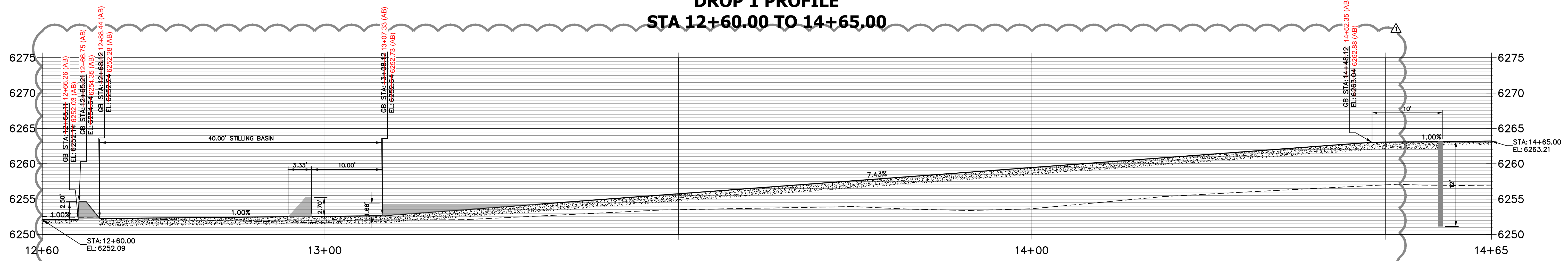
No.	REVISION

H-SCALE	N/A	V-SCALE	N/A	DATE	DESIGNED BY	DRAWN BY	CHECKED BY
				08/03/22	JB/P	JB/P	

SHEET	7	OF	10
JOB NO.	25174.00		

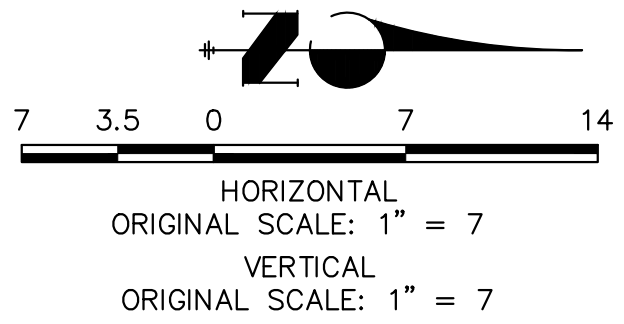


**DROP 1 PROFILE  
STA 12+60.00 TO 14+65.00**



Mike Bramlett  
 12/27/2023

RECORD DRAWINGS  
06/23



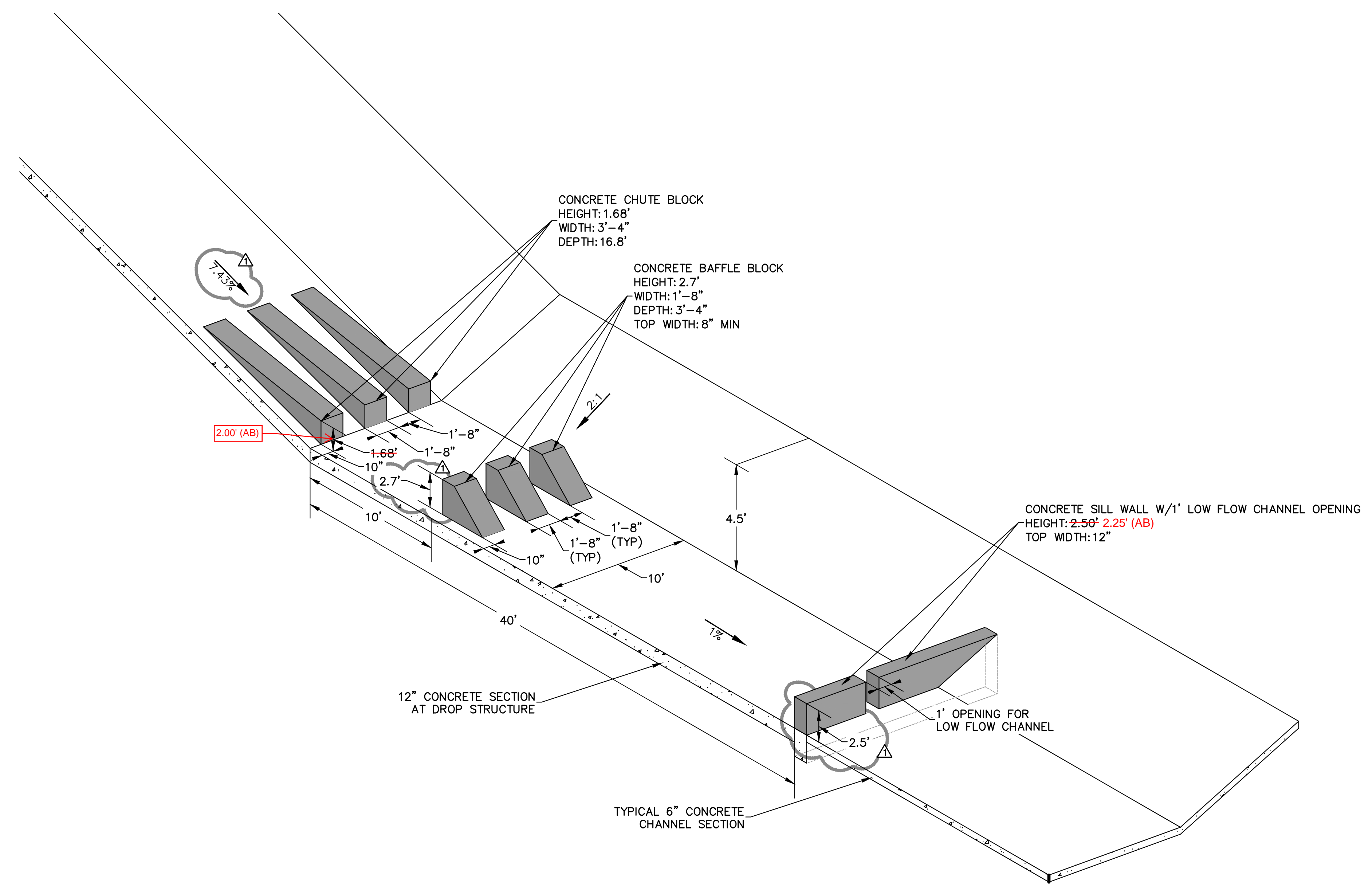
Know what's below.  
 Call before you dig.

**ENGINEER'S STATEMENT**

PREPARED UNDER MY DIRECT SUPERVISION AND ON BEHALF OF JR ENGINEERING  
  
  
 Mike A. Bramlett, P.E.  
 COLORADO P.E. 32314  
 FOR AND ON BEHALF OF JR ENGINEERING, INC.

UNTIL SUCH TIME AS THESE DRAWINGS ARE APPROVED BY THE AGENCIES, OR ENGINEERING APPROVES THEIR USE, DESIGNATED BY WRITTEN AUTHORIZATION.	
PREPARED FOR <b>CS POWERS &amp; GALLEY LLC</b> 510 S. NEIL ST. CHAMPAIGN, IL 61820 OFFICE PHONE (734) 216-2577	
<b>J.R. ENGINEERING</b> A Westman Company  Central 303-740-9888 • Colorado Springs 719-588-2583 Fort Collins 970-491-9888 • www.jrengineering.com	
BY	DATE
JBP	11/07/22
No.	REVISION
1	CHANNEL DROP CHANGES
H-SCALE	1" = 7'
V-SCALE	1" = 7'
DATE	08/03/22
DESIGNED BY	JBP
DRAWN BY	JBP
CHECKED BY	
<b>SAND CREEK CENTER TRIBUTARY</b> <b>DROP STRUCTURES PLAN AND PROFILE</b>	
SHEET	8 OF 10
JOB NO.	25174.00






  
 Mike Bramlett  
 12/27/2023  
 RECORD DRAWINGS  
 06/23

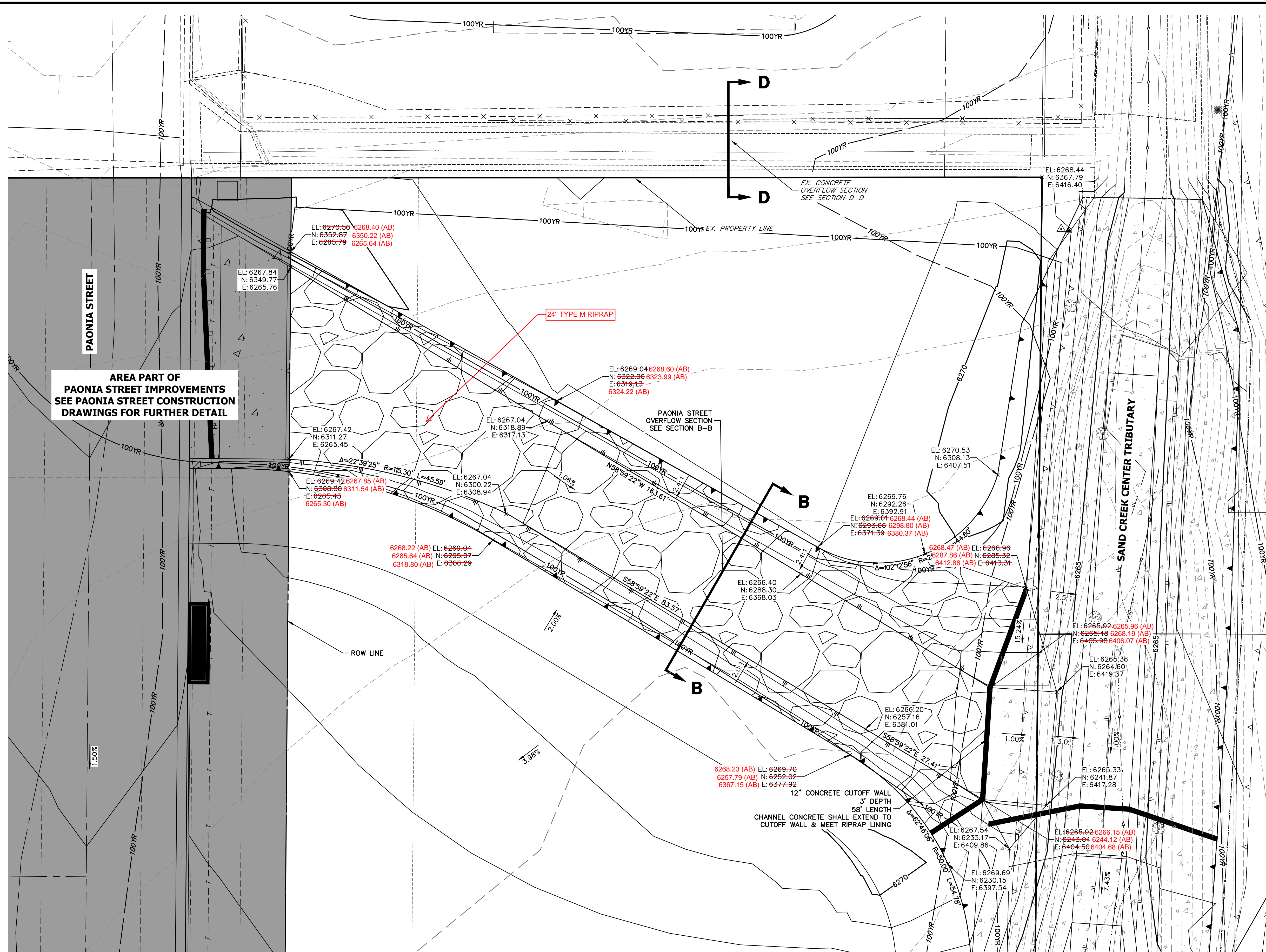


**ENGINEER'S STATEMENT**  
 PREPARED UNDER MY DIRECT SUPERVISION AND ON BEHALF OF JR ENGINEERING

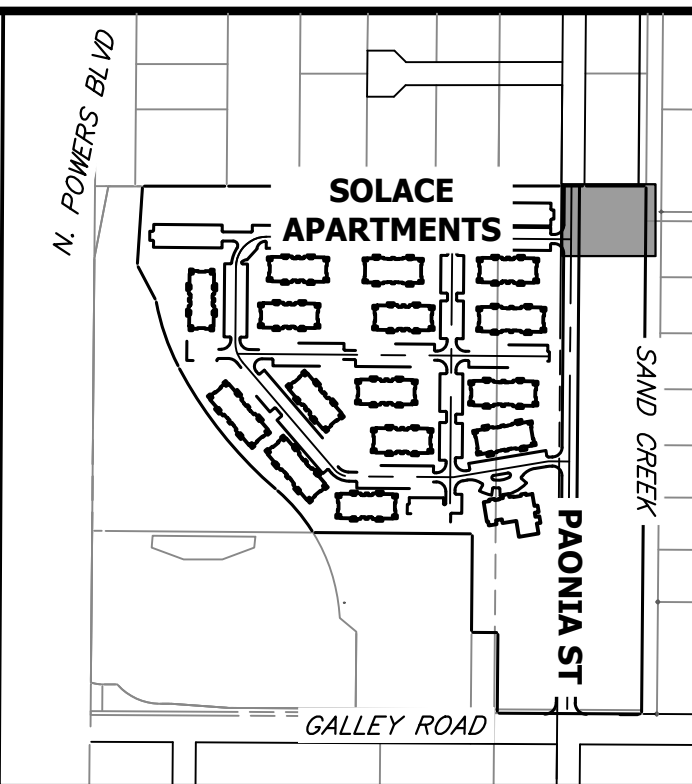
Mike Bramlett  
 32314  
 08/03/22  
 DATE

MIKE A. BRAMLETT, P.E.  
 COLORADO P.E. 32314  
 FOR AND ON BEHALF OF JR ENGINEERING

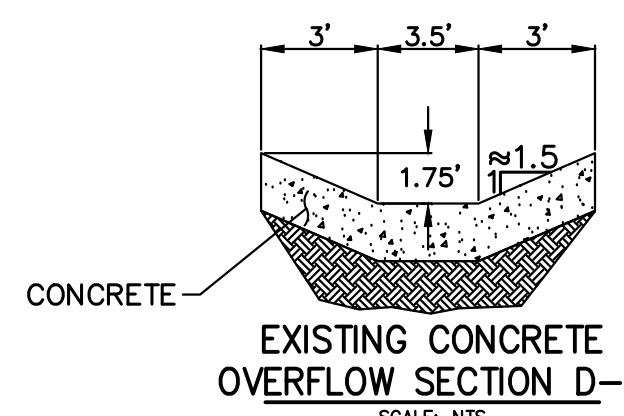
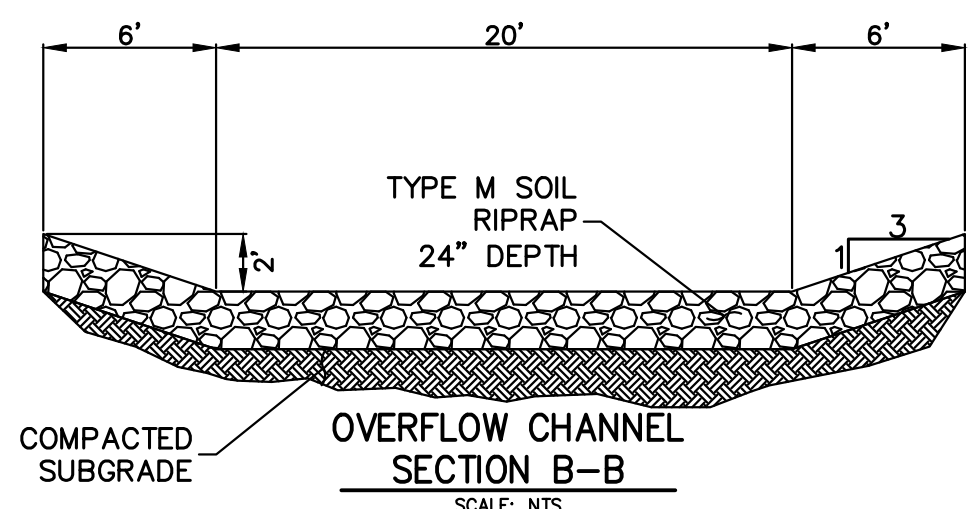
UNTIL SUCH TIME AS THESE DRAWINGS ARE APPROVED BY THE APPROPRIATE REVIEWING AGENCIES, JR ENGINEERING APPROVES THEIR USE IN ANY MANNER NOT DESIGNATED BY WRITTEN AUTHORIZATION.	
PREPARED FOR	CS POWERS & GALLEY LLC 510 S. NEIL ST. CHAMPAIGN, IL 61820 OFFICE PHONE (734) 216-2577
	 <b>J.R. ENGINEERING</b> A Westman Company Centennial 303-740-9888 • Colorado Springs 719-588-2583 Fort Collins 970-491-9888 • www.jrengineering.com
BY	DATE
JBP	11/07/22
No.	REVISION
1	CHANNEL DROP CHANGES
H-SCALE	N/A
V-SCALE	N/A
DATE	08/03/22
DESIGNED BY	JBP
DRAWN BY	JBP
CHECKED BY	
SAND CREEK CENTER TRIBUTARY DROP STRUCTURE DETAIL SHEETS	
SHEET	9 OF 10
JOB NO.	25174.00



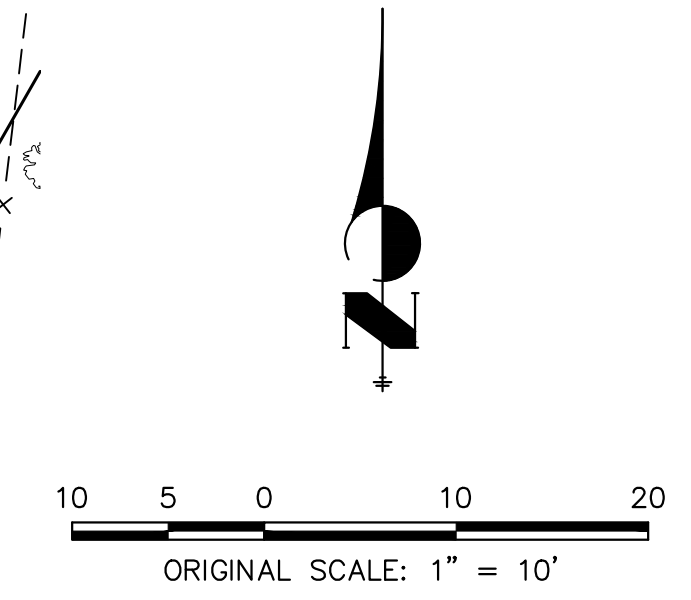
AREA PART OF PAONIA STREET IMPROVEMENTS SEE PAONIA STREET CONSTRUCTION DRAWINGS FOR FURTHER DETAIL



KEY MAP SCALE 1"=500'



Mike Bramlett  
12/27/2023  
RECORD DRAWINGS 06/23



**ENGINEER'S STATEMENT**

PREPARED UNDER MY DIRECT SUPERVISION AND ON BEHALF OF JR ENGINEERING  
 Mike Bramlett  
 32314  
 08/03/22  
 MIKE A. BRAMLETT, P.E.  
 COLORADO P.E. 32314  
 FOR AND ON BEHALF OF JR ENGINEERING

UNTIL SUCH TIME AS THESE DRAWINGS ARE APPROVED BY THE APPROPRIATE REVIEWING AGENCIES, OR ENGINEERING APPROVES THEIR USE, THESE DRAWINGS ARE DESIGNATED BY WRITTEN AUTHORIZATION.

PREPARED FOR  
**CS POWERS & GALLEY LLC**  
 510 S. NEIL ST.  
 CHAMPAIGN, IL 61820  
 OFFICE PHONE (734) 216-2577

**J.R. ENGINEERING**  
 A Westman Company  
 Centennial 300-740-0888 • Colorado Springs 719-588-2583  
 Fort Collins 970-491-9888 • www.jrengineering.com

NO.	REVISION	BY	DATE

SAND CREEK CENTER TRIBUTARY  
 PAONIA STREET OVERFLOW PLAN  
 SHEET 10 OF 10  
 JOB NO. 25174.00