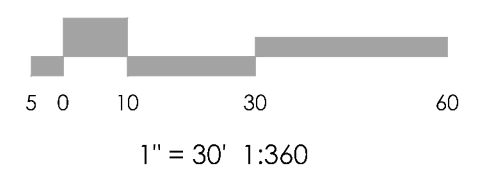
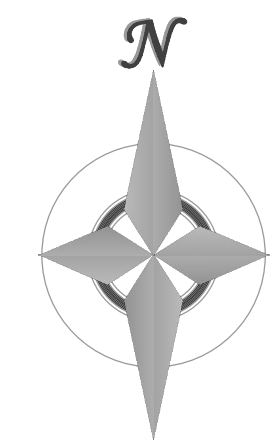


BENCHMARK



REVISIONS

DESIGNED BY _____
 DRAWN BY _____
 CHECKED BY _____
 AS-BUILT BY _____
 CHECKED BY _____

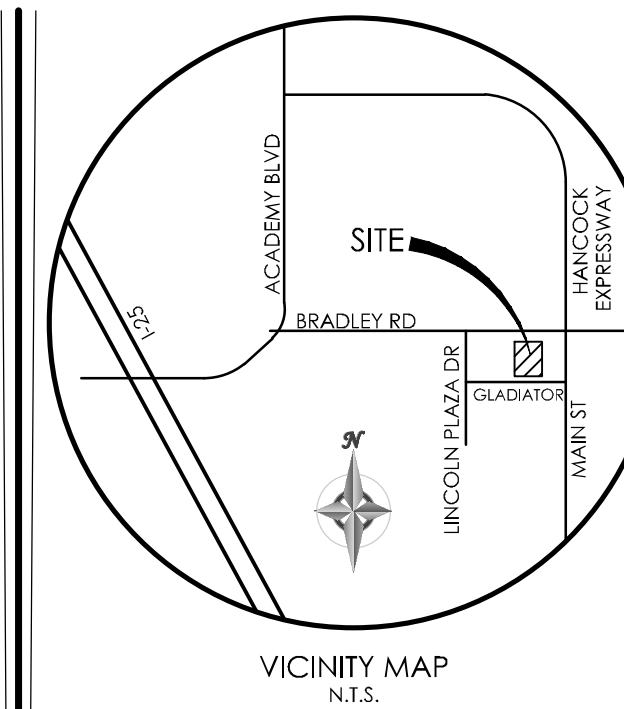
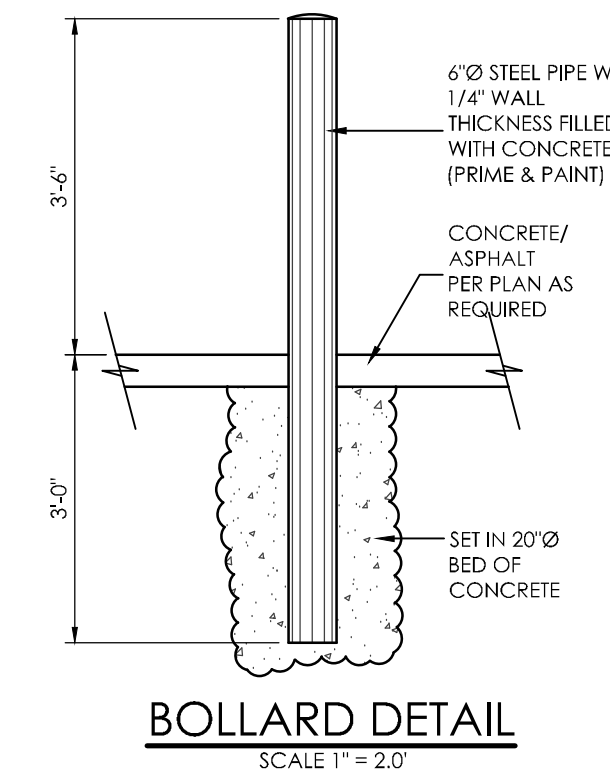
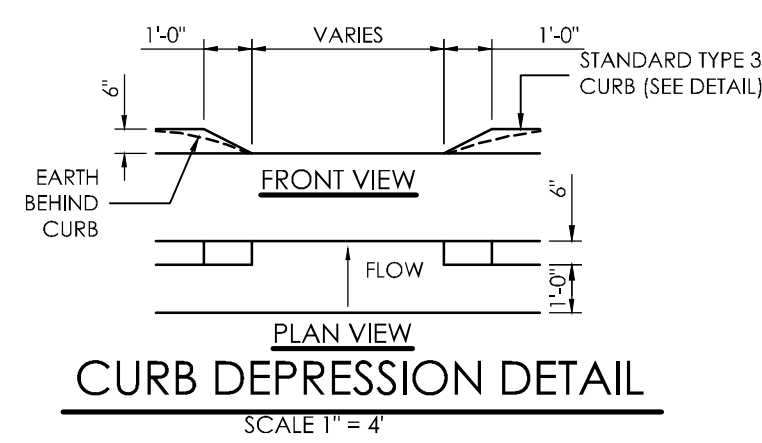
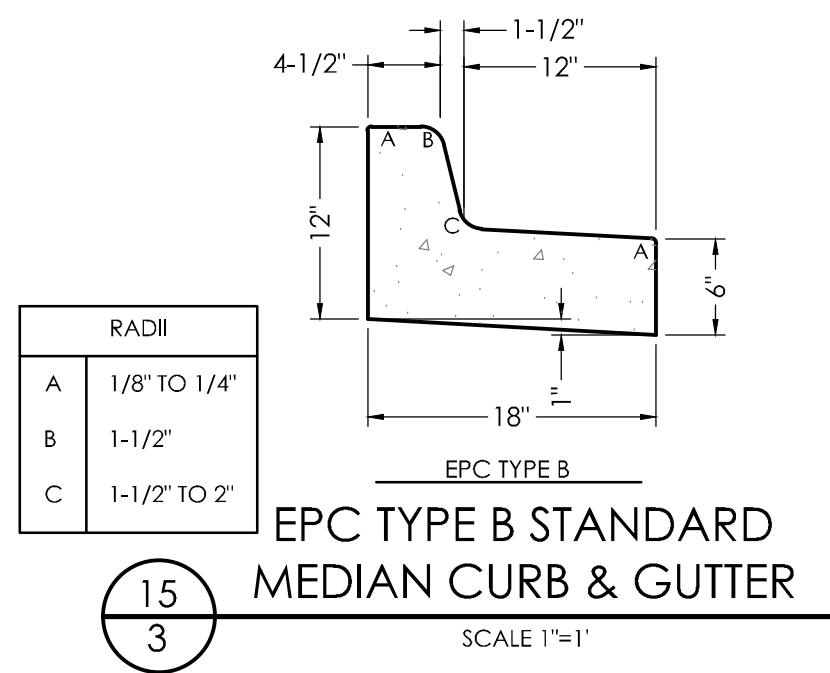
**THE TOWNHOMES AT
 BRADLEY CROSSROADS**
**SITE DEVELOPMENT
 PLAN
 ADA ROUTE PLAN**

DP-3 MVE PROJECT 61093
 MVE DRAWING DEV-ADA

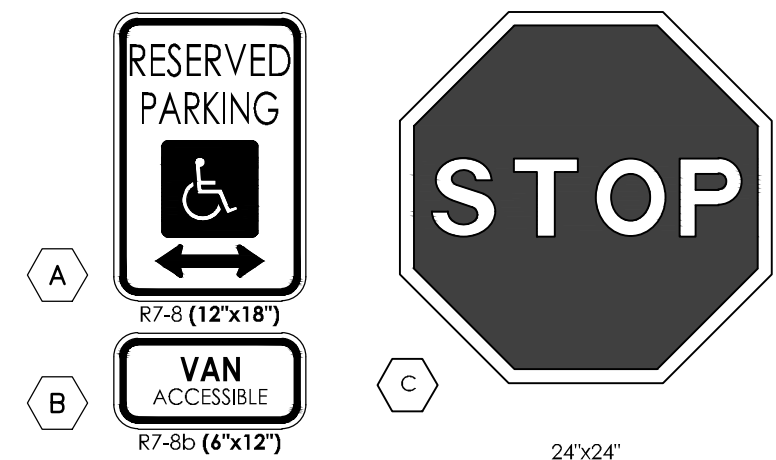
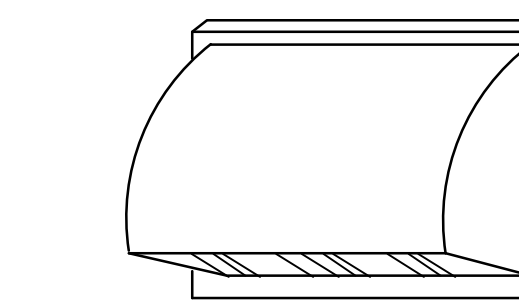
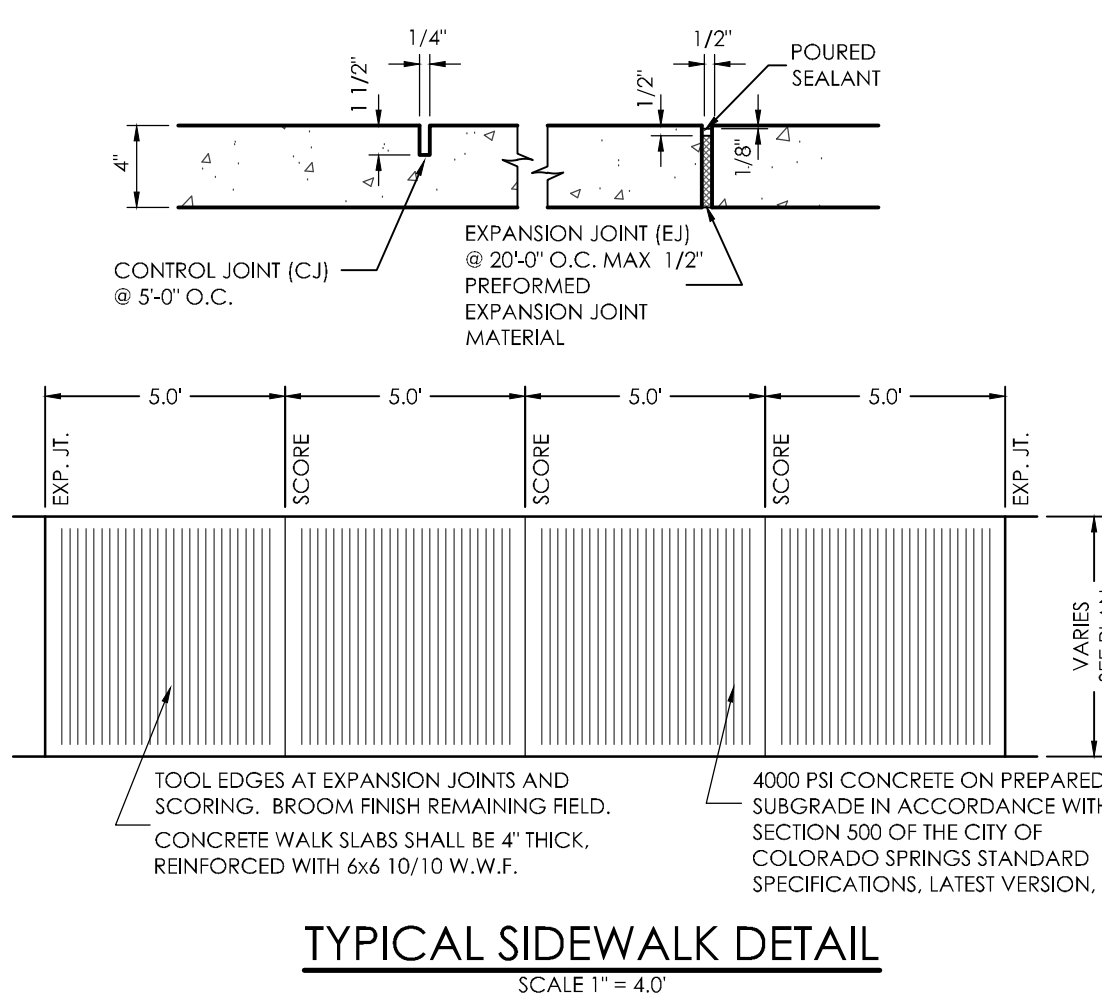
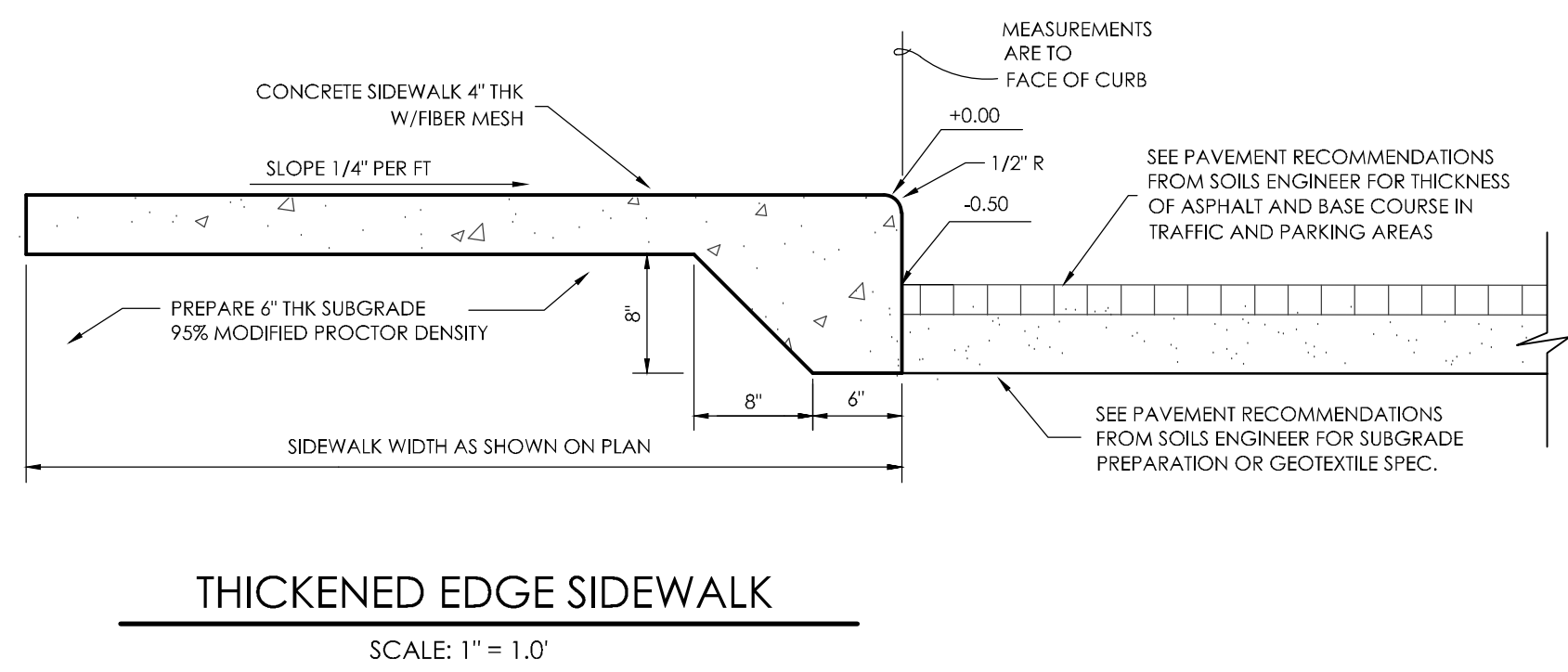
FEBRUARY 11, 2019
SHEET 3 OF 4

ADA NOTE

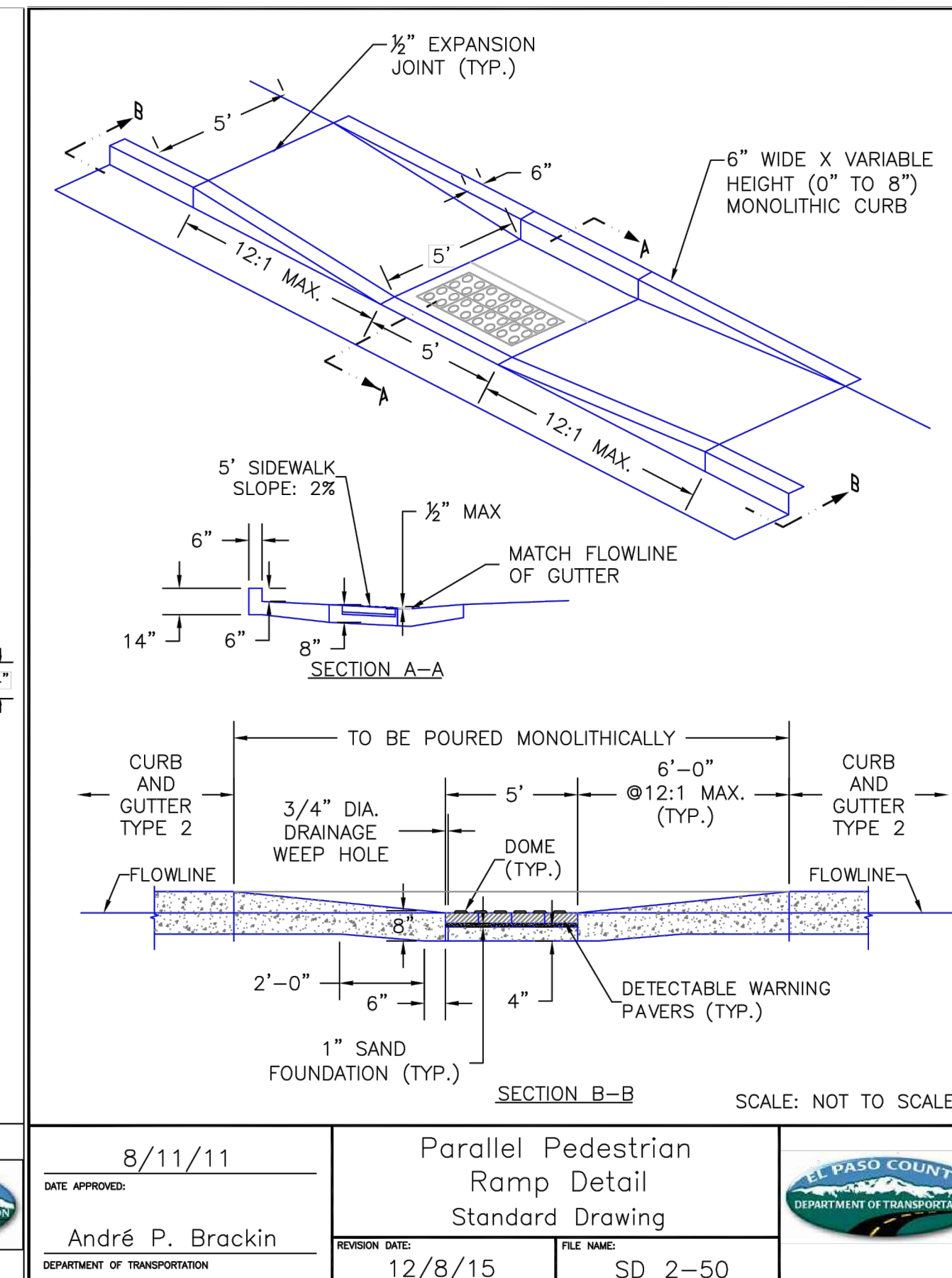
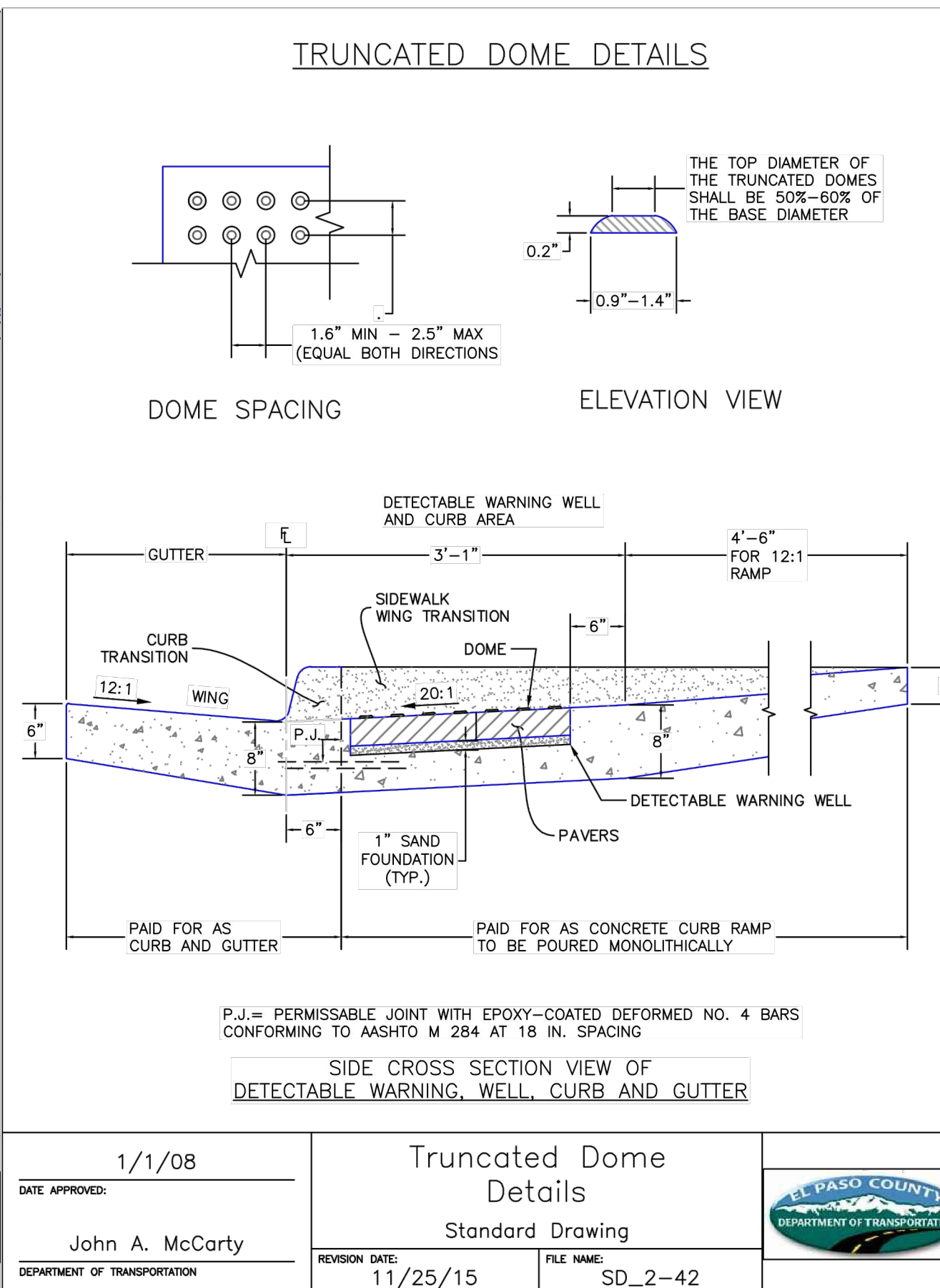
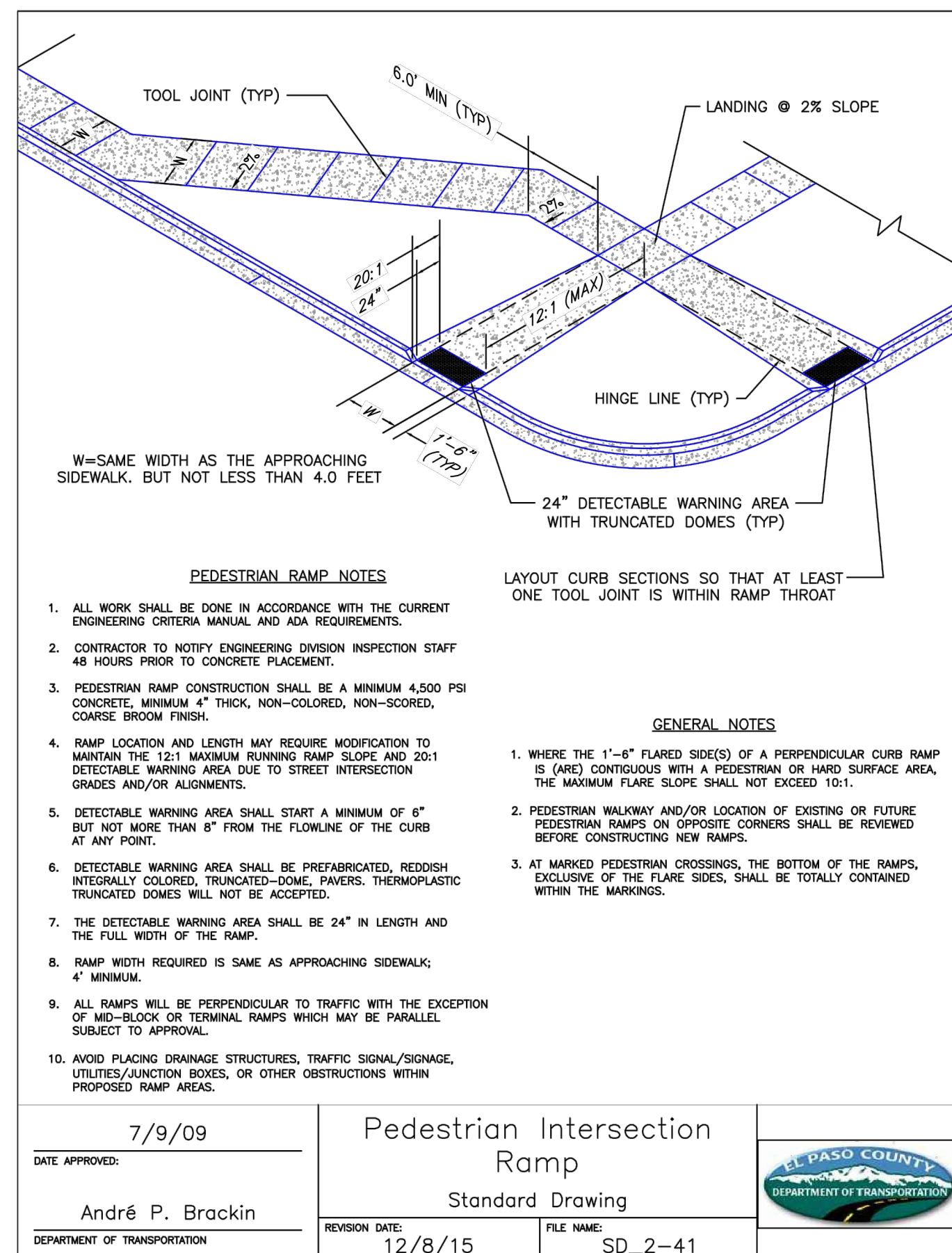
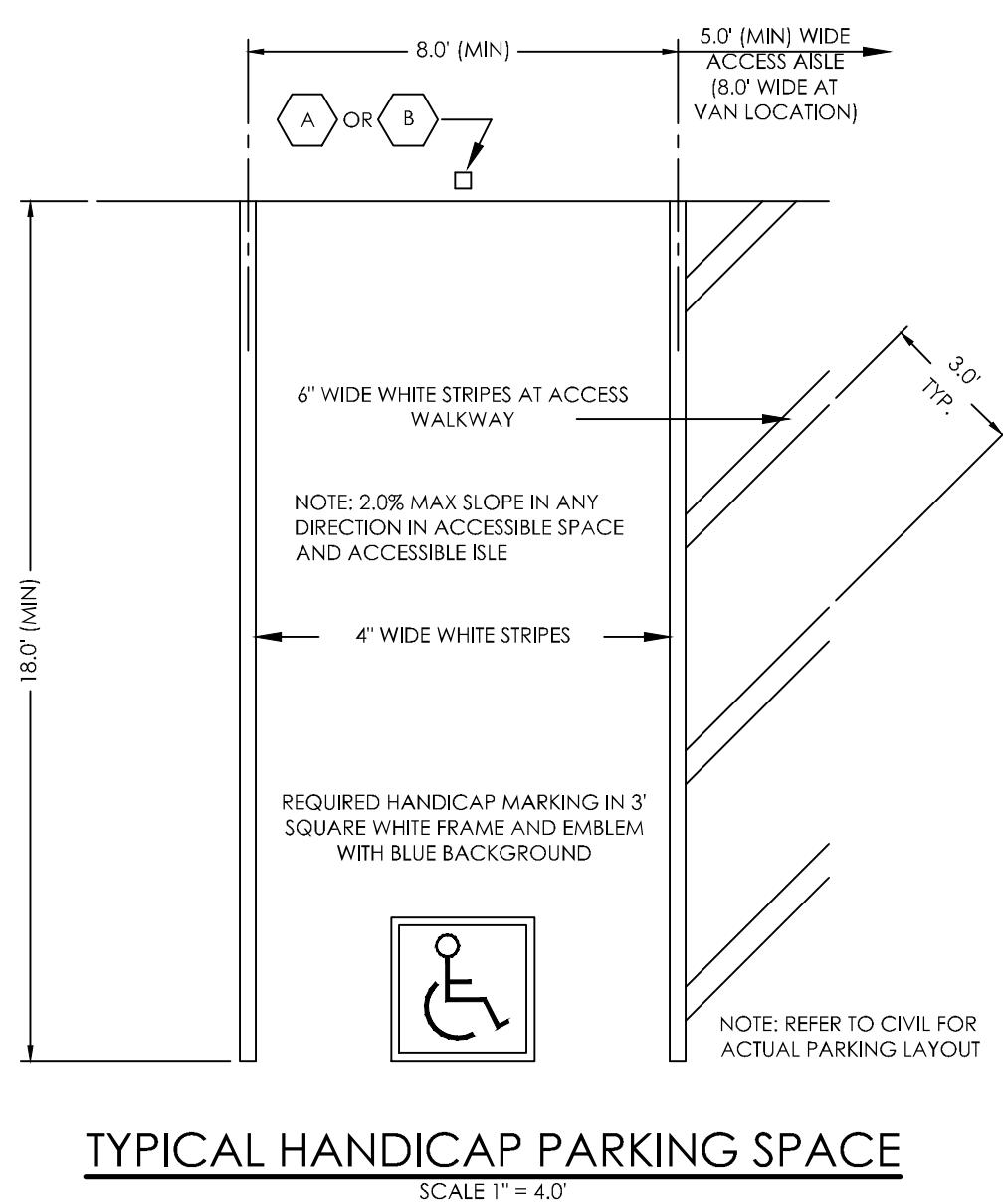
THE PARTIES RESPONSIBLE FOR THIS PLAN HAVE FAMILIARIZED THEMSELVES WITH ALL CURRENT ACCESSIBILITY CRITERIA AND SPECIFICATIONS AND THE PROPOSED PLAN REFLECTS ALL SITE ELEMENTS REQUIRED BY THE APPLICABLE ADA DESIGN STANDARDS AND GUIDELINES AS PUBLISHED BY THE UNITED STATES DEPARTMENT OF JUSTICE. APPROVAL OF THIS PLAN BY EL PASO COUNTY DOES NOT ASSURE COMPLIANCE WITH THE ADA OR ANY REGULATIONS OR GUIDELINES ENACTED OR PROMULGATED UNDER OR WITH RESPECT TO SUCH LAWS.



BENCHMARK



1. TYPOGRAPHY TO BE HELVETICA MEDIUM
2. NOTE: REFER TO SITE PLAN FOR LOCATIONS
3. REMOVE EXISTING SIGNS AND REUSE WHERE APPLICABLE (NOT SHOWN)
4. STOP SIGNS WILL BE INSTALLED BY THE DEVELOPER AT THE LOCATIONS SHOWN ON THE DEVELOPMENT PLAN TO MEET MUTCD STANDARDS AND THE CITY OF COLORADO SPRINGS TRAFFIC ENGINEERING STANDARDS.



REVISIONS

DESIGNED BY _____
DRAWN BY _____
CHECKED BY _____
AS-BUILTS BY _____
CHECKED BY _____

THE TOWNHOMES AT
BRADLEY CROSSROADS

SITE DEVELOPMENT
PLAN
SITE DETAILS

DP-4 MVE PROJECT 61093
MVE DRAWING DEV-SD

FEBRUARY 11, 2019
SHEET 4 OF 4

EPC PROJ NO. PPR1846

