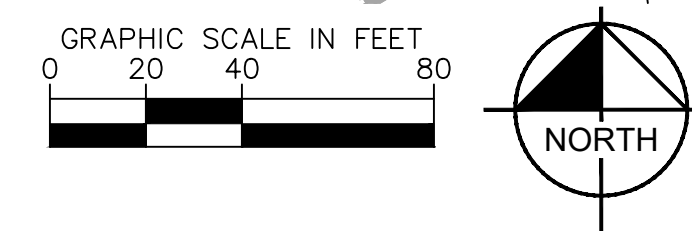
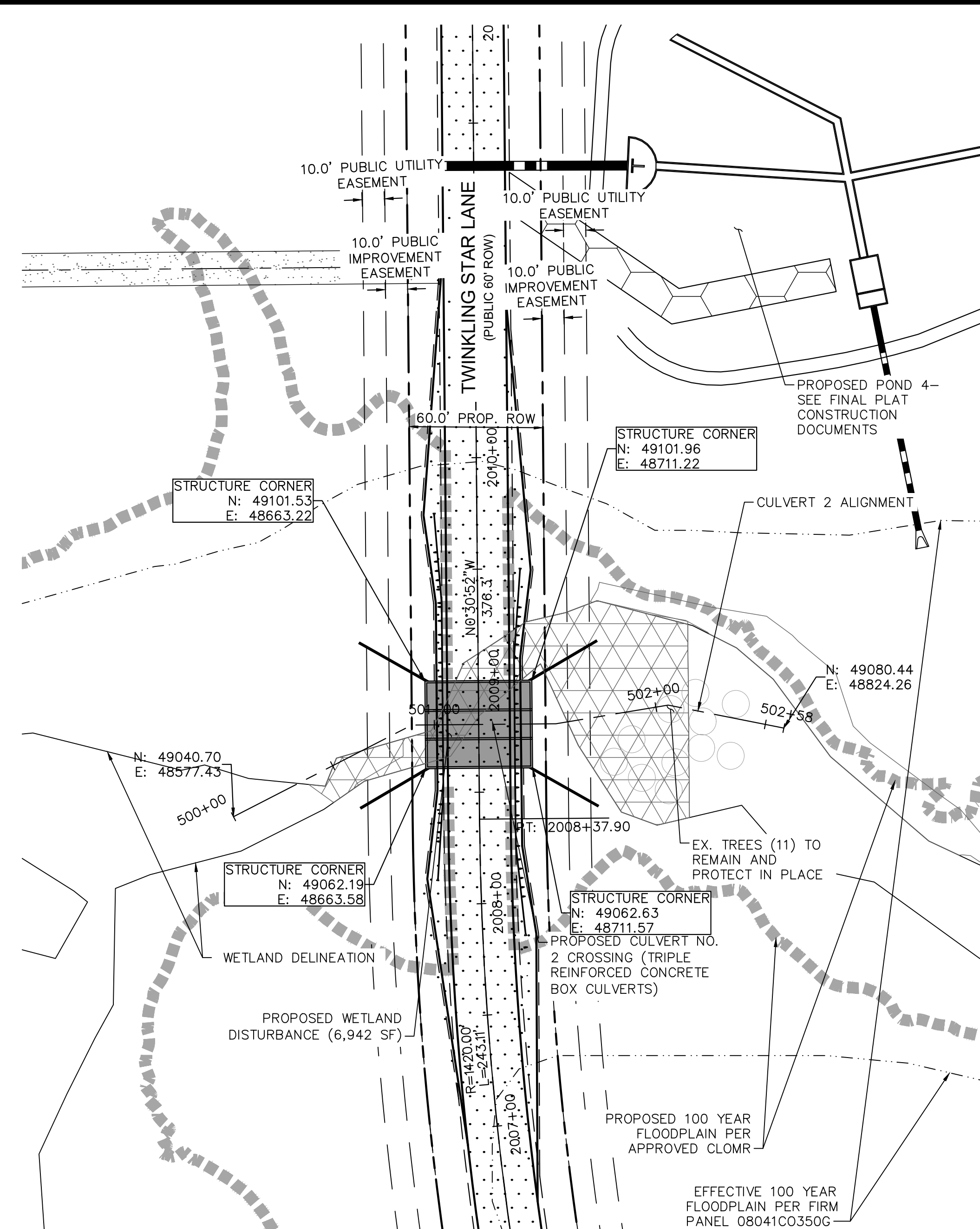
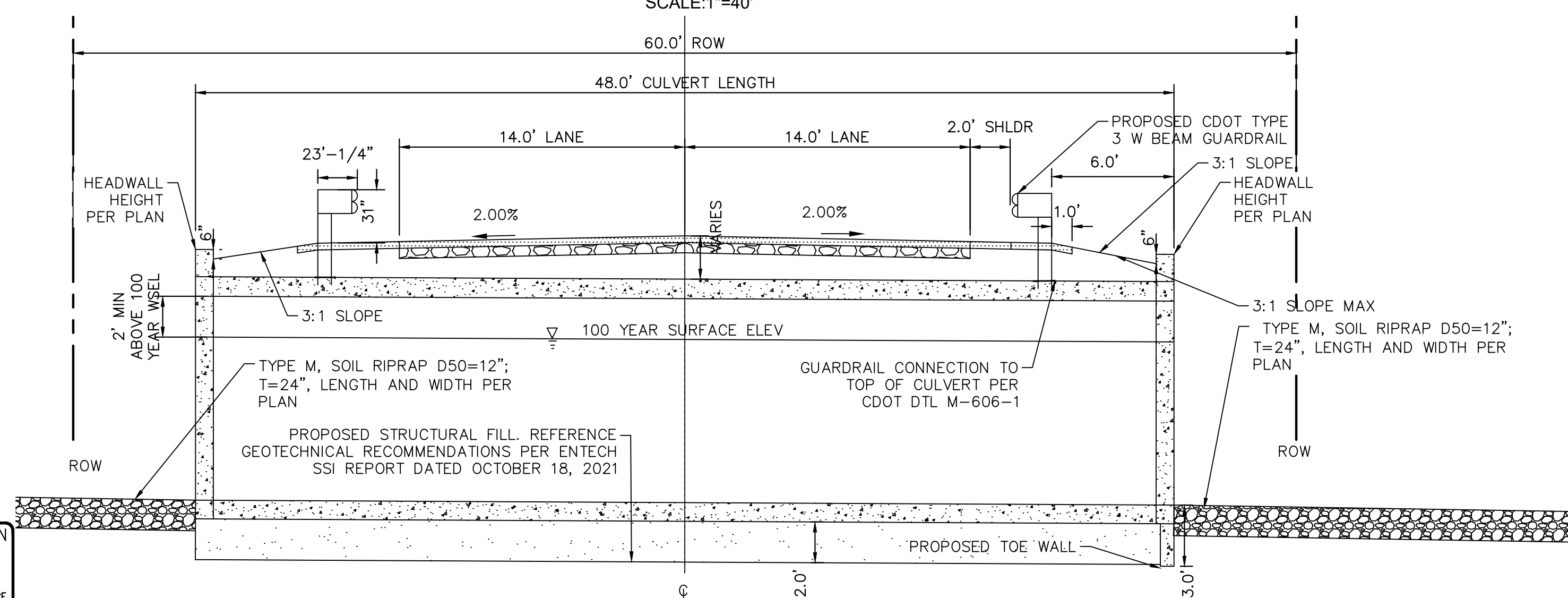
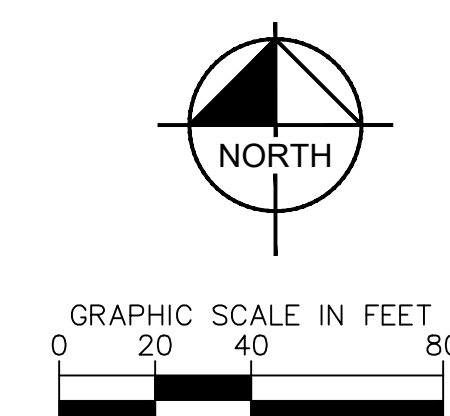


PCD FILE NO. CDR-21-012



CULVERT CROSSING NO. 2
SCALE: 1"=40'



SCALE: 1" = 5'

1. ROADWAY LAYOUT IS FOR REFERENCE ONLY.
REFERENCE WINSOME FILING NO. 3 CONSTRUCTION
DOCUMENTS FOR ROADWAY PLAN AND PROFILES
2. GUARDRAIL WILL BE INSTALLED WITH INSTALLATION OF
THE REINFORCED CONCRETE BOX CULVERTS AND THIS
PLAN. REFERENCE SHEETS 3 - 4. FOR GUARDRAIL
DETAILS

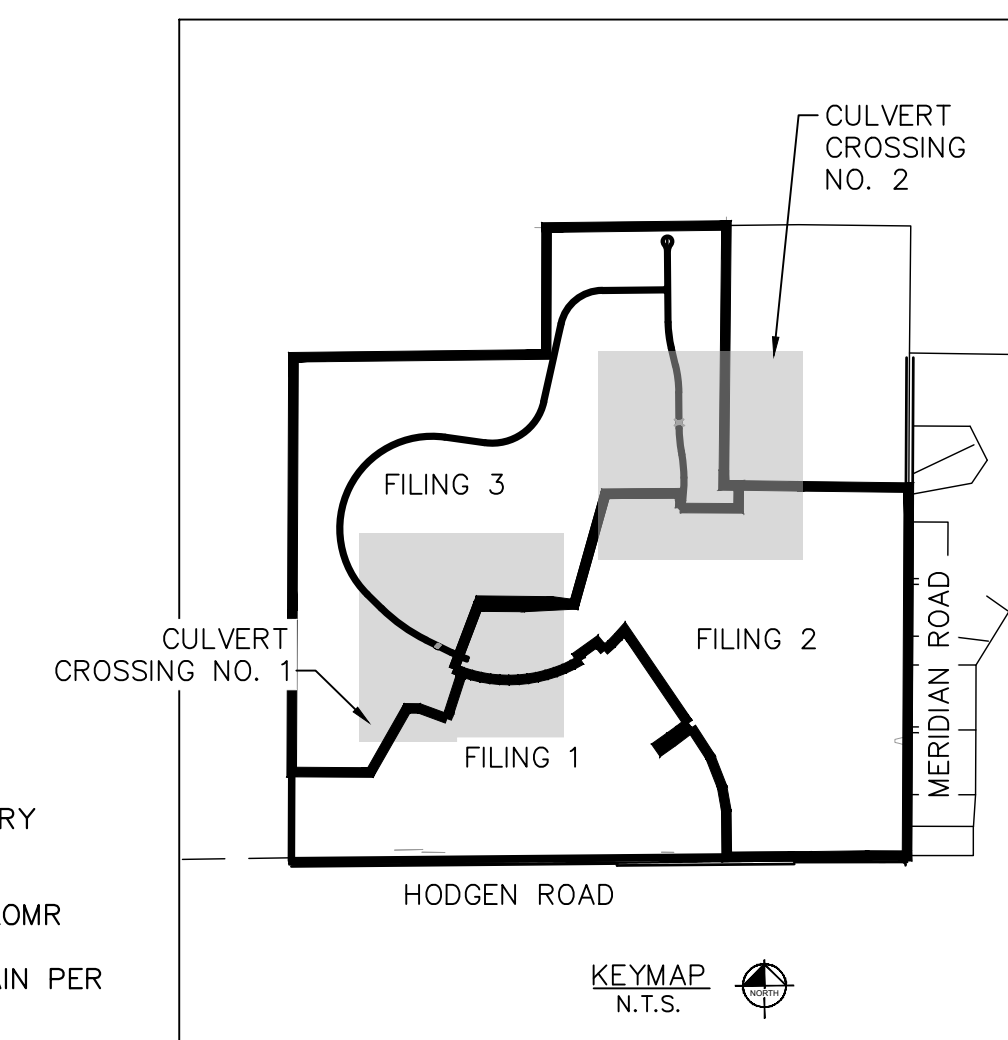
5430

5431

5430

5431

PROPERTY LINE
EXISTING MAJOR CONTOUR
EXISTING MINOR CONTOUR
PROPOSED MAJOR CONTOUR
PROPOSED MINOR CONTOUR
WETLAND DELINEATION BOUNDARY
PROPOSED 100 YEAR
FLOODPLAIN PER APPROVED CLOMR
EFFECTIVE 100 YEAR FLOODPLAIN PER
FIRM PANEL 08041C0350G
WETLAND DISTURBANCE AREA



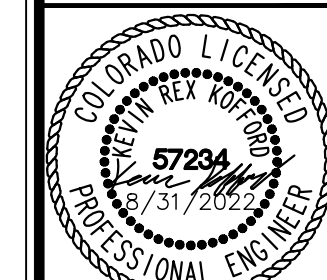
PCD FILE NO. CDR-21-012

3	COUNTY RESUBMITTAL #3	KRK	8/31/22	KRK
2	COUNTY RESUBMITTAL #2	KRK	4/6/22	KRK
1	COUNTY RESUBMITTAL #1	KRK	1/21/22	KRK
NO	PEWAGON	NO	DATE	NO

Kimley»»Horn
2021 KIMLEY-HORN AND ASSOCIATES, INC.
2 North Nevada Avenue Suite 300
Colorado Springs, Colorado 80903 (719) 453-0180

DESIGNED BY: KRK
DRAWN BY: JRH
CHECKED BY: KRK
DATE: 9/3/202

WINSOME FILING NO. 3
EL PASO COUNTY, COLORADO
CONSTRUCTION DOCUMENTS
HORIZONTAL CONTROL



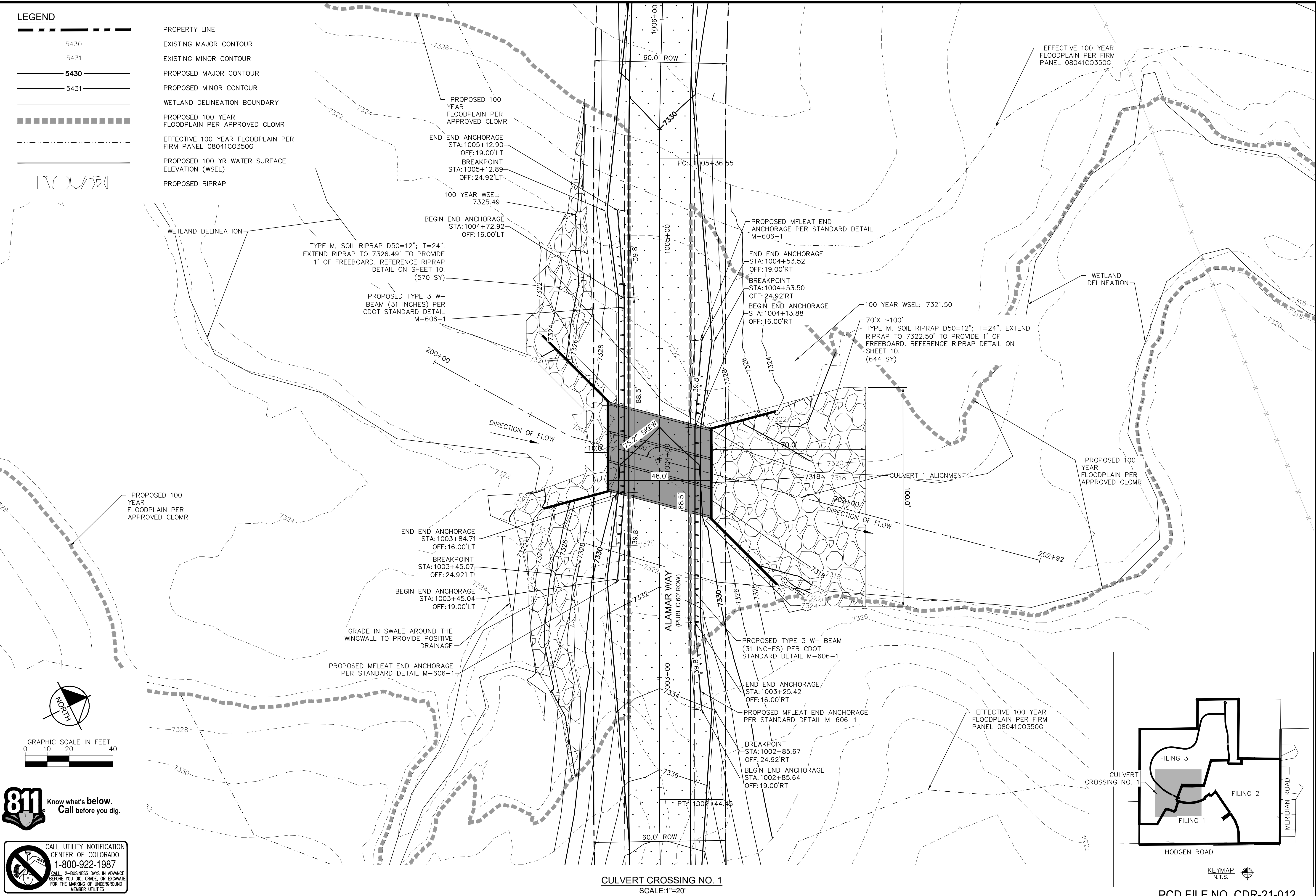
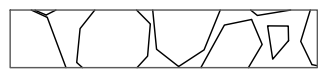
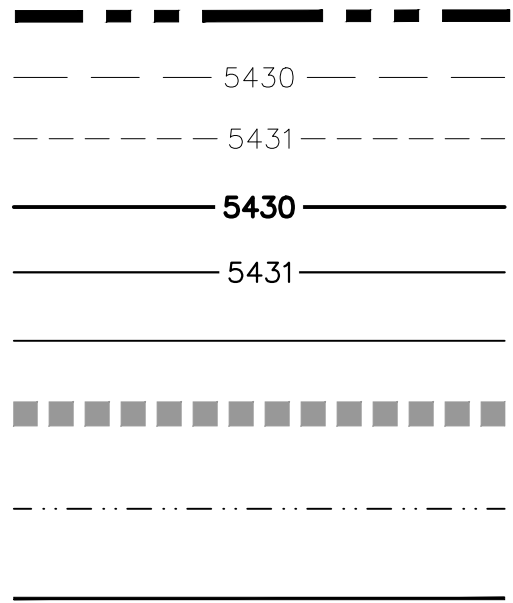
PROJECT NO
196106001

SHEET

2

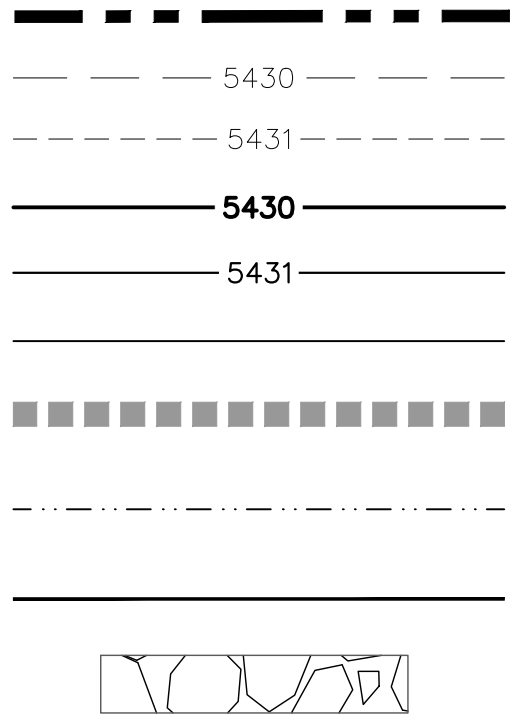
K:\COS_Civil\196106001_Winsome Filing No. 3\CADD\PlanSheets\Culvert CDs\196106001_SP-Exhibit.dwg Kofford, Kevin 8/31/2022 8:23 AM

LEGEND

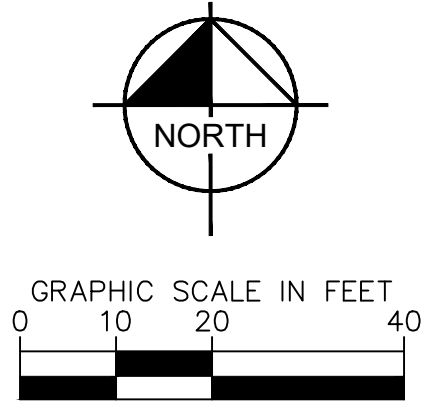
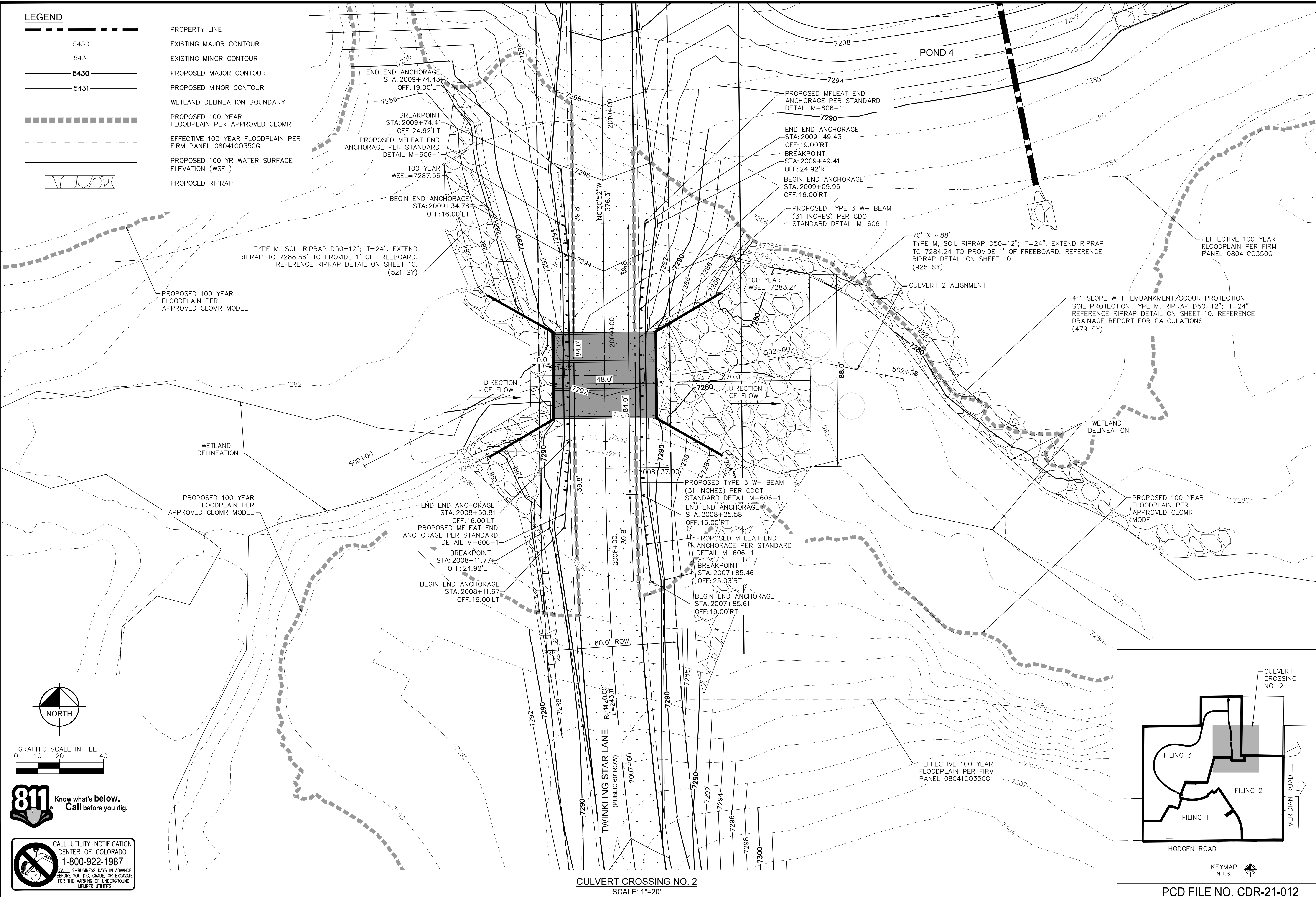


K:\COS_Civil\196106001_Winsome Filing No. 3\CADD\PlanSheets\Culvert CDS\196106001_SP-Exhibit.dwg Kofford, Kevin 8/31/2022 8:23 AM

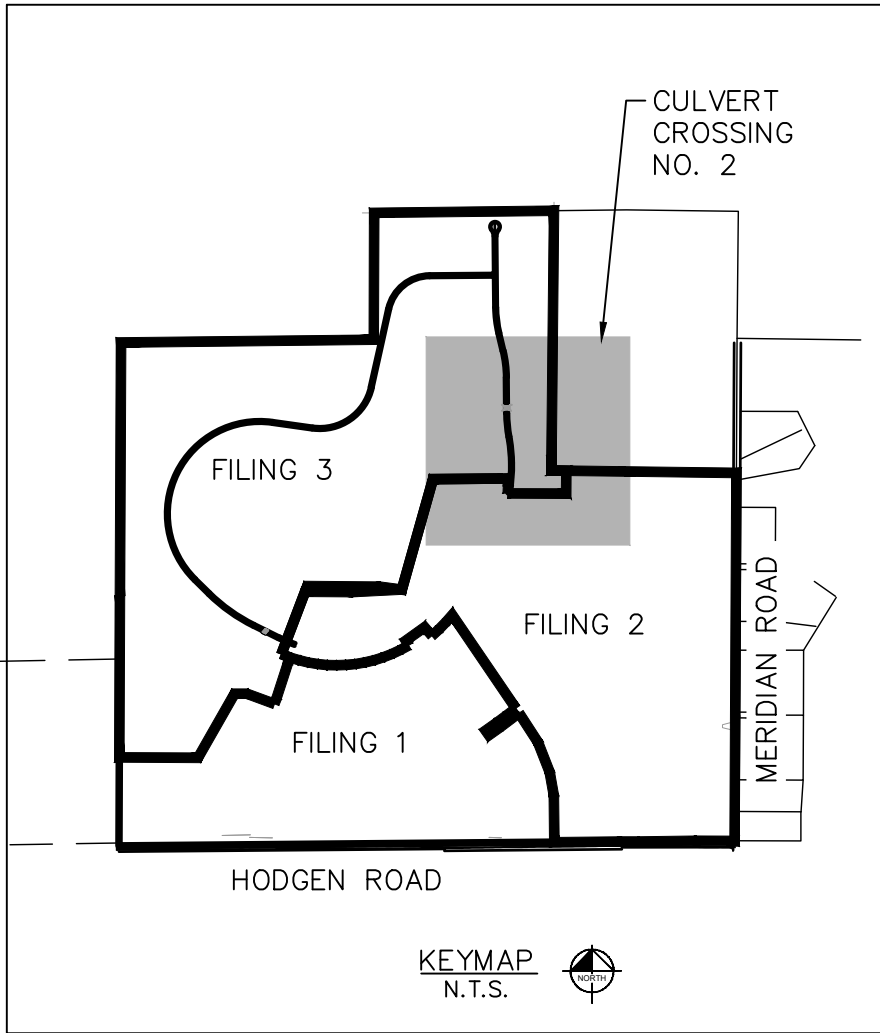
LEGEND



PROPERTY LINE
EXISTING MAJOR CONTOUR
EXISTING MINOR CONTOUR
PROPOSED MAJOR CONTOUR
PROPOSED MINOR CONTOUR
WETLAND DELINEATION BOUNDARY
PROPOSED 100 YEAR FLOODPLAIN PER APPROVED CLOMR
EFFECTIVE 100 YEAR FLOODPLAIN PER FIRM PANEL 08041C0350G
PROPOSED 100 YR WATER SURFACE ELEVATION (WSEL)
PROPOSED RIPRAP



CULVERT CROSSING NO. 2
SCALE: 1"=20'



PCD FILE NO. CDR-21-012

NO.	REVISION	BY	DATE	APPR
3	COUNTY RESUBMITTAL #3	KRK	8/31/22	KRK
2	COUNTY RESUBMITTAL #2	KRK	4/6/22	KRK
1	COUNTY RESUBMITTAL #1	KRK	1/21/22	KRK

Kimley»Horn
2021 KIMLEY-HORN AND ASSOCIATES, INC.
2 North Nevada Avenue Suite 300
Colorado Springs, Colorado 80903 (719) 453-0180

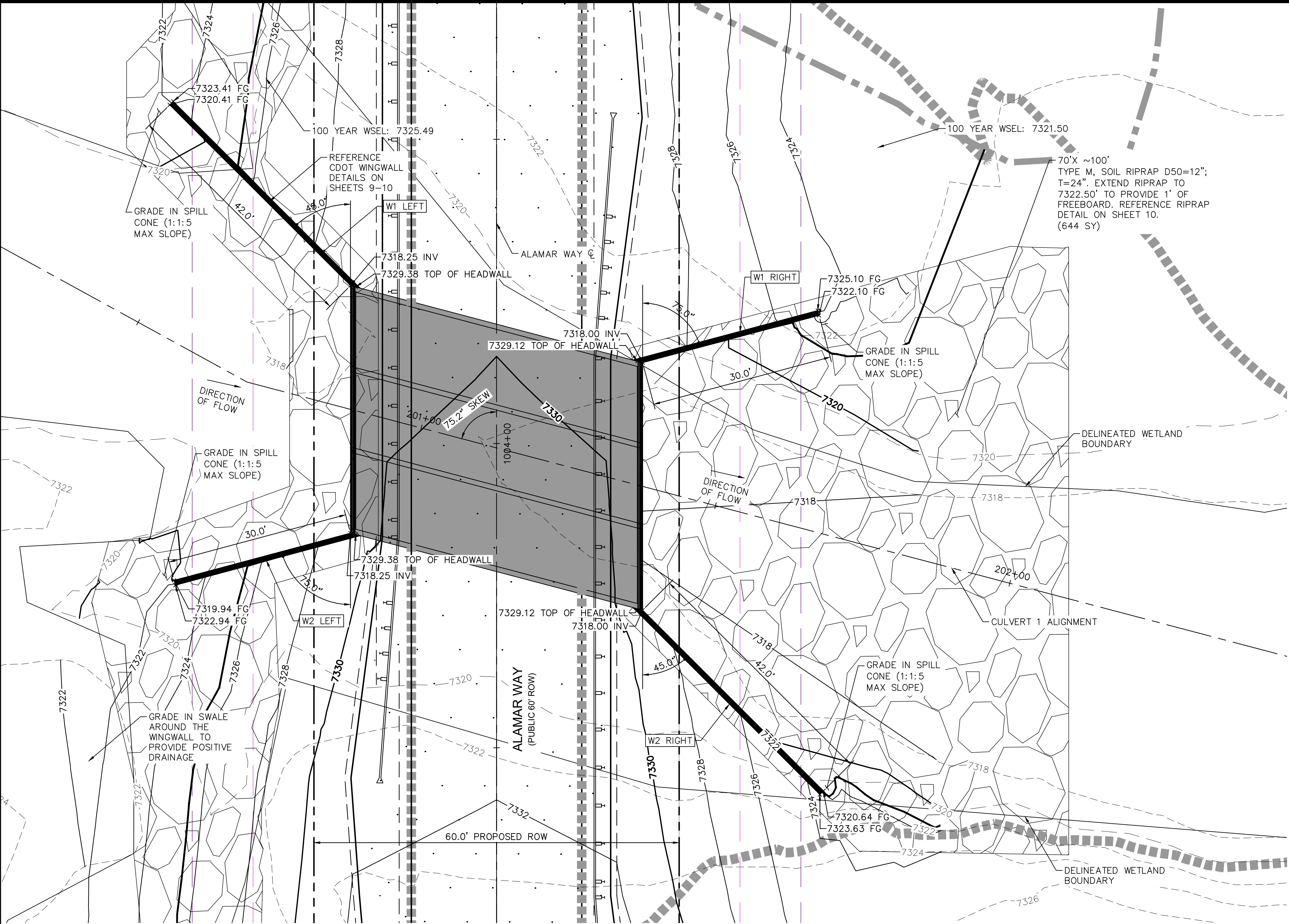
DESIGNED BY: KRK
DRAWN BY: JRH
CHECKED BY: KRK
DATE: 9/3/2021

WINSOME FILING NO. 3
EL PASO COUNTY, COLORADO
CONSTRUCTION DOCUMENTS
CULVERT 2-SITE PLAN

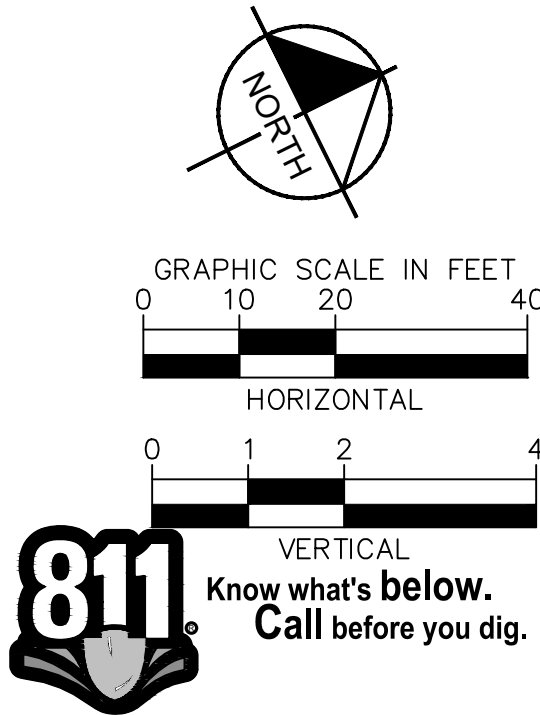


PROJECT NO.
196106001
SHEET

K:\COS_Civil\196106001_Winsome Filing No. 3\CADD\PlanSheets\Culvert CDs\196106001_SP.dwg Kofford, Kevin 8/31/2022 8:24 AM



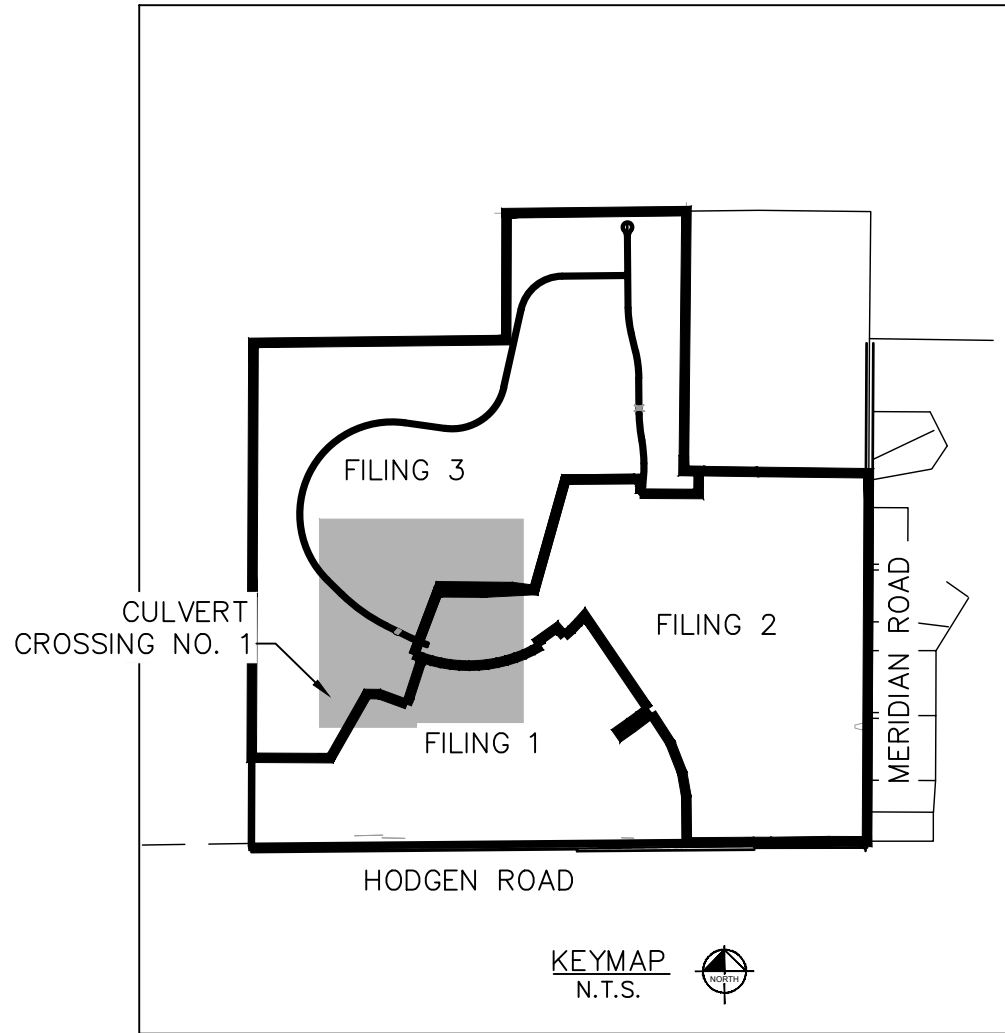
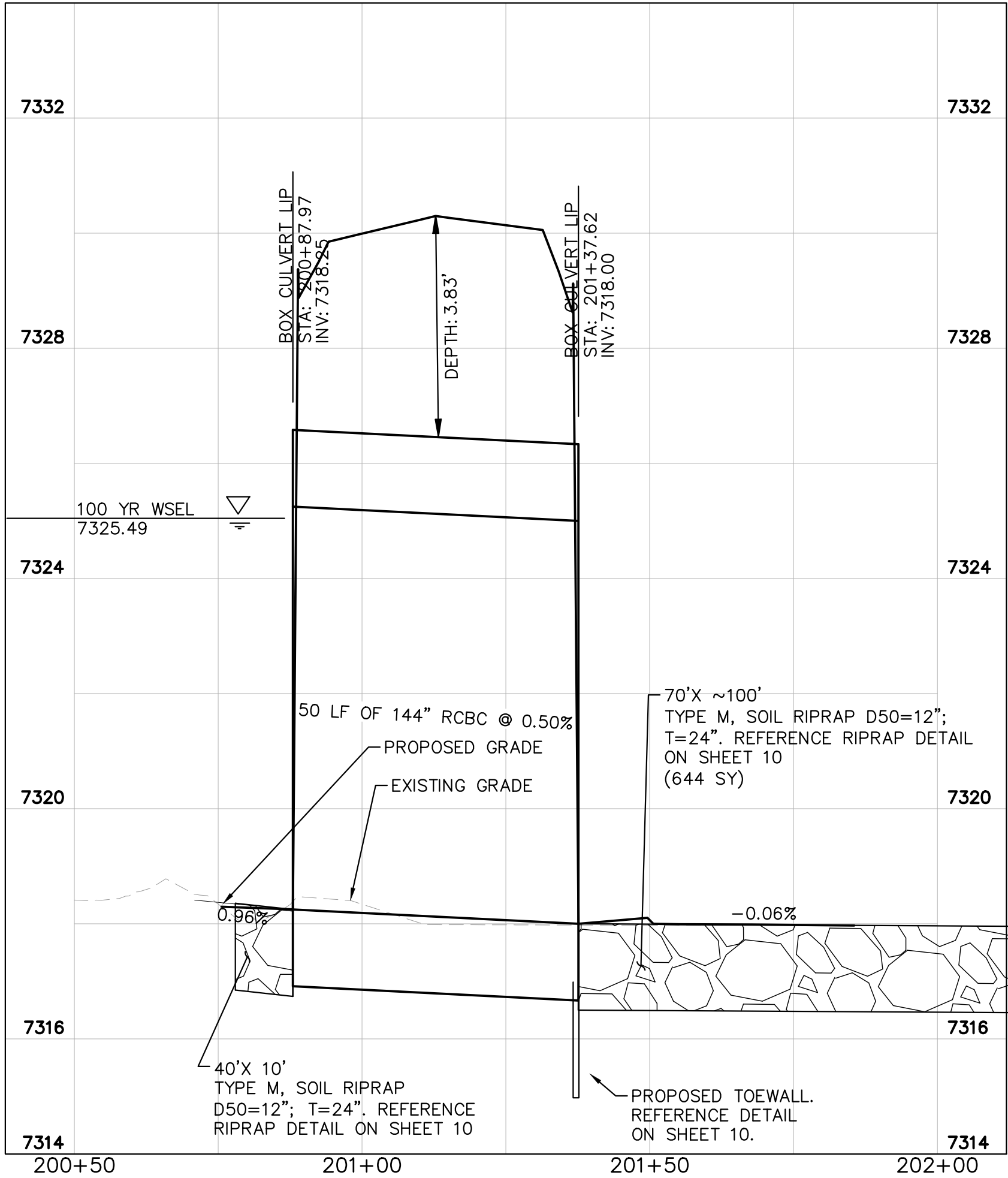
CULVERT CROSSING NO. 1
SCALE:1"=10'



WINGWALL DIMENSION SUMMARY

LOCATION	h (FT)*	k (FT)	LENGTH (FT)	m**	θ (DEG)
W1 RIGHT	12'-0 1/2"	3	30	10'- 7 1/2 "	75
W2 RIGHT	12'-0 1/2"	3	42	10'- 7 1/2 "	45
W1 LEFT	12'-0 1/2"	3	42	10'- 7 1/2 "	45
W2 LEFT	12'-0 1/2"	3	30	10'- 7 1/2 "	75

*HEIGHT IS FROM BOTTOM OF SLAB TO TOP OF MODIFIED HEADWALL PER DETAIL ON SHEET 10
**M IS DIFFERENT VALUE THAN STANDARD EQUATION DUE TO MODIFIED HEADWALL HEIGHT



PCD FILE NO. CDR-21-012

NO.	BY	DATE	REVISION
3	KRK	8/31/22	COUNTY RESUBMITTAL #3
2	KRK	4/6/22	COUNTY RESUBMITTAL #2
1	KRK	1/21/22	COUNTY RESUBMITTAL #1

Kimley»Horn

2021 KIMLEY-HORN AND ASSOCIATES, INC.
2 North Nevada Avenue Suite 300
Colorado Springs, Colorado 80903 (719) 453-0180

DESIGNED BY: KRK
DRAWN BY: JRH
CHECKED BY: KRK
DATE: 9/3/2021

WINSOME FILING NO. 3
EL PASO COUNTY, COLORADO
CONSTRUCTION DOCUMENTS
CULVERT 1-PLAN & PROFILE

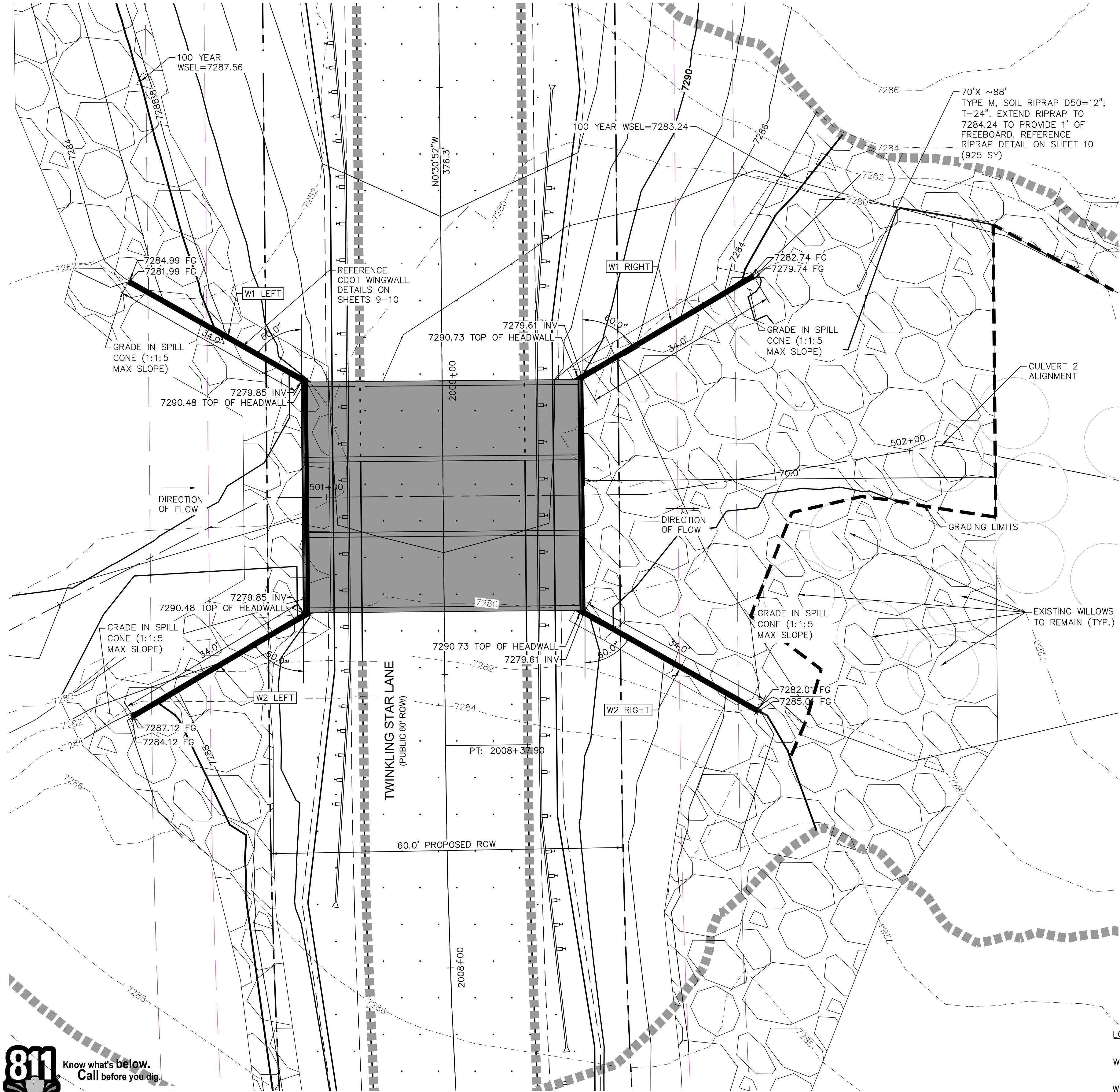


PROJECT NO.
196106001

SHEET

5

K:\COS_Civil\196106001_Winsome Filing No. 3\CADD\PlanSheets\Culvert CDS\196106001_SP.dwg Kofford, Kevin 8/31/2022 8:24 AM



CULVERT CROSSING NO. 2
SCALE: 1"=40'

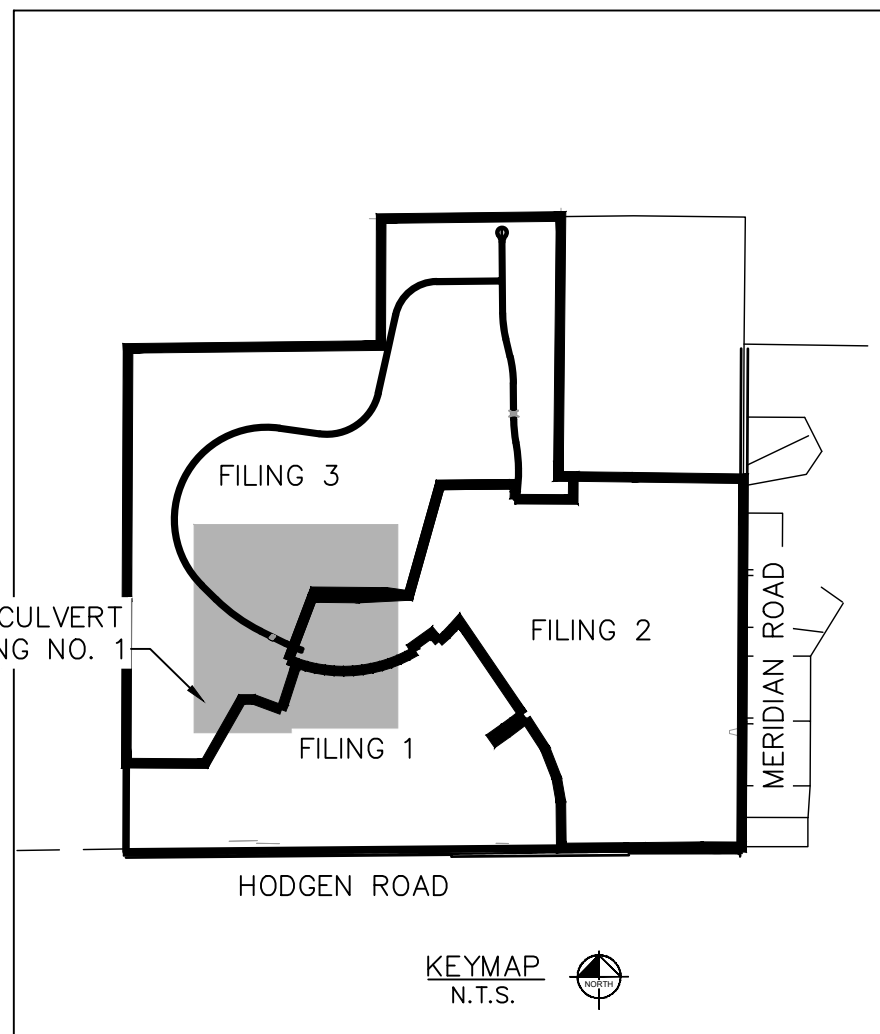
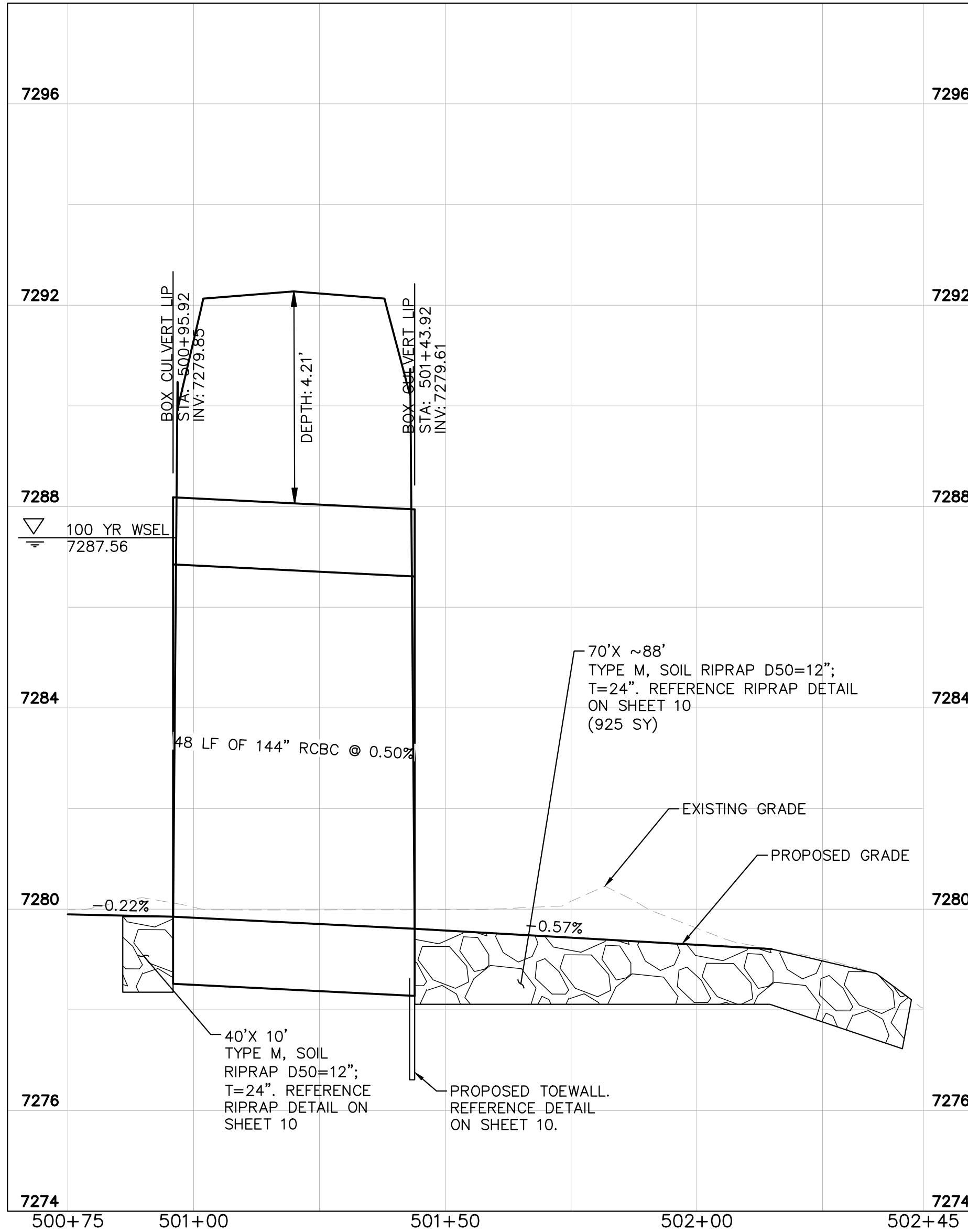
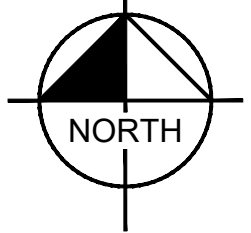
WINGWALL DIMENSION SUMMARY

LOCATION	h (FT)*	k (FT)	LENGTH (FT)	m**	θ (DEG)
W1 RIGHT	12'-0 1/2"	3	34	10'- 7 1/2"	60
W2 RIGHT	12'-0 1/2"	3	34	10'- 7 1/2"	60
W1 LEFT	12'-0 1/2"	3	34	10'- 7 1/2"	60
W2 LEFT	12'-0 1/2"	3	34	10'- 7 1/2"	60

*HEIGHT IS FROM BOTTOM OF SLAB TO TOP OF MODIFIED HEADWALL PER DETAIL ON SHEET 10
**M IS DIFFERENT VALUE THAN STANDARD EQUATION DUE TO MODIFIED HEADWALL HEIGHT

811 Know what's below. Call before you dig.

CALL UTILITY NOTIFICATION CENTER OF COLORADO
1-800-922-1987
CALL 2-BUSINESS DAYS IN ADVANCE BEFORE YOU DIG, GRADE, OR EXCAVATE FOR THE MARKING OF UNDERGROUND MEMBER UTILITIES



PCD FILE NO. CDR-21-012

WINSOME FILING NO. 3
EL PASO COUNTY, COLORADO
CONSTRUCTION DOCUMENTS
CULVERT 2-PLAN & PROFILE

PROJECT NO.
196106001

SHEET
6

DESIGNED BY: KRK
DRAWN BY: JRH
CHECKED BY: KRK
DATE: 9/3/2021

COUNTY RESUBMITTAL #3
COUNTY RESUBMITTAL #2
COUNTY RESUBMITTAL #1

NO. 1 2 3

BY DATE APPR

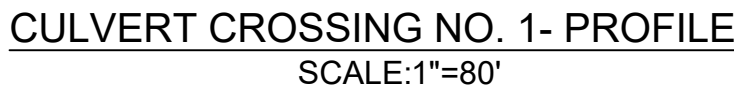
3
2
1

CRK 8/31/22
CRK 4/6/22
CRK 1/21/22

REVISION

Kimley»Horn

2021 KIMLEY-HORN AND ASSOCIATES, INC.
2 North Nevada Avenue Suite 300
Colorado Springs, Colorado 80903 (719) 453-0180



GRAPHIC SCALE IN FEET

0 40 80 160

HORIZONTAL



Know what's **below**.
Call before you dig.



PCD FILE NO. CDR-21-012

[illegible]

Kimley»»Horn

2021 KIMLEY-HORN AND ASSOCIATES, INC.
2 North Nevada Avenue Suite 300
Colorado Springs, Colorado 80903 (719) 453-0180

DESIGNED BY: KRK
DRAWN BY: JRH
CHECKED BY: KRK
DATE: 9/3/2021

WINSOME FILING NO. 3
EL PASO COUNTY, COLORADO
CONSTRUCTION DOCUMENTS
ALAMAR WAY PROFILE

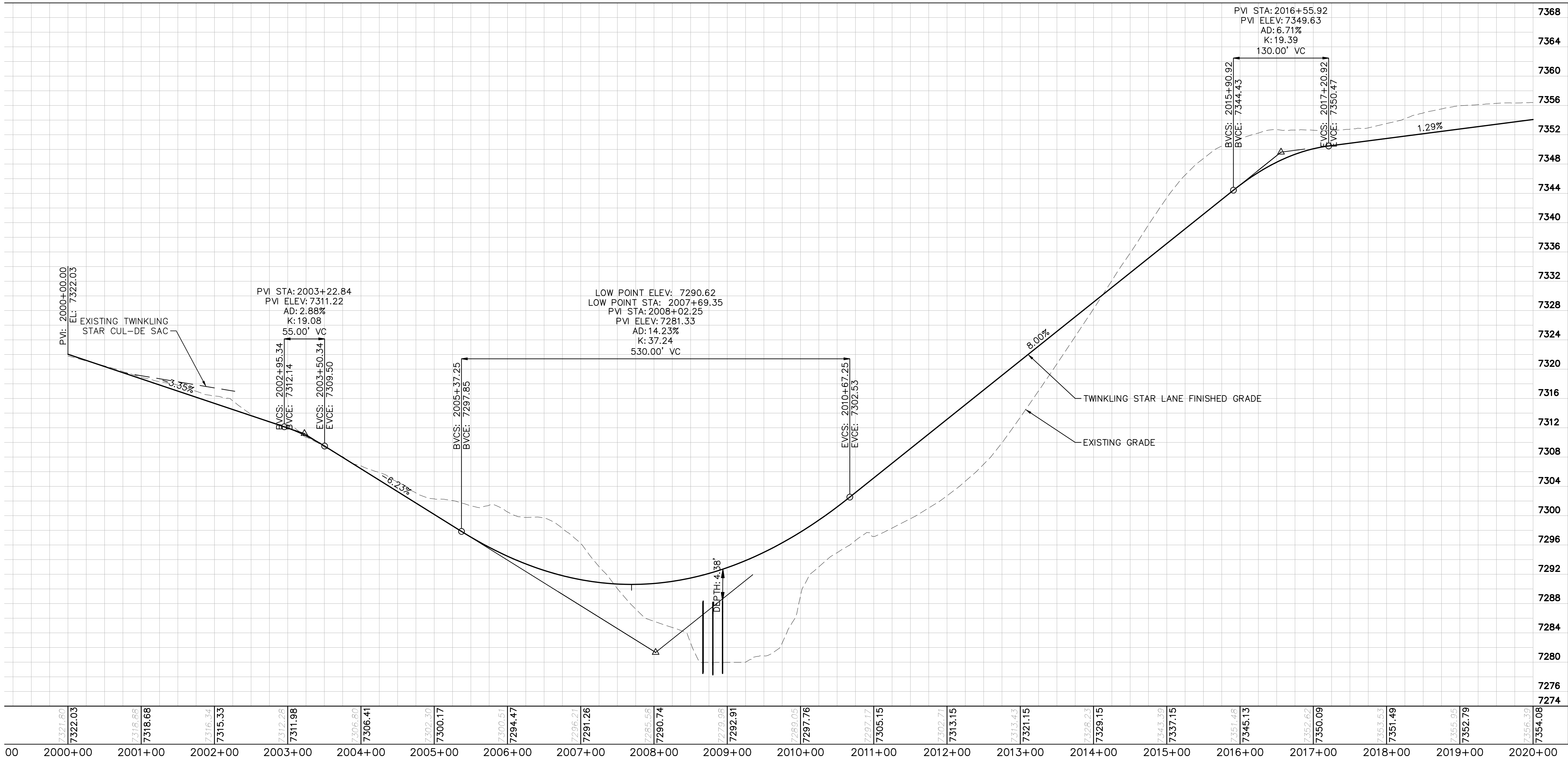


PROJECT NO.
196106001

SHEET

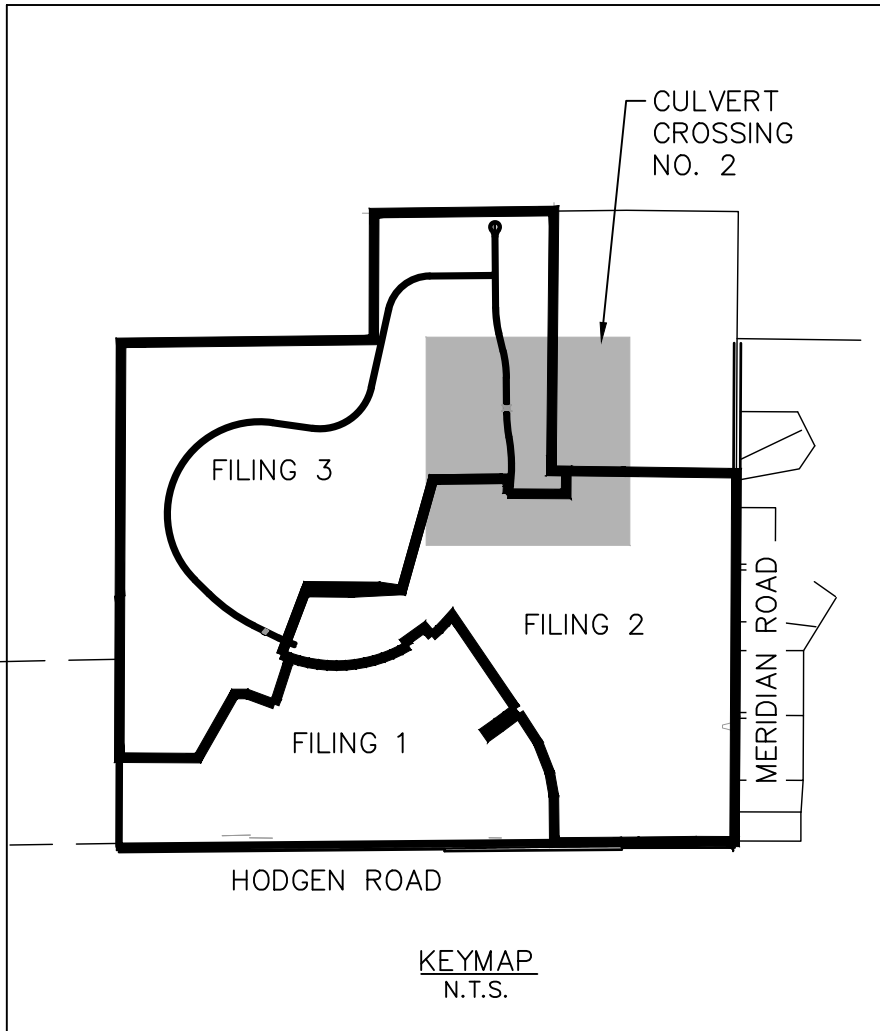
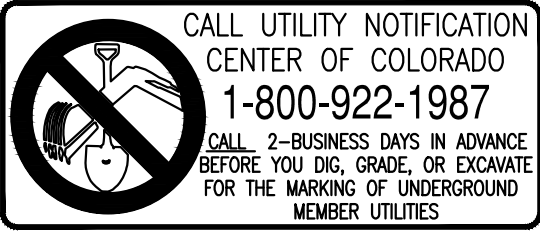
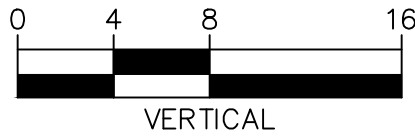
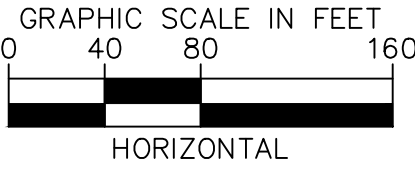
7

K:\COS_Civil\196106001_Winsome Filing No. 3\CADD\PlanSheets\Culvert CDS\196106001_RD.dwg Kafford, Kevin 8/31/2022 8:25 AM



CULVERT CROSSING NO. 2-FILE
SCALE: 1"=80'

NOTE: THIS PROFILE IS FOR REFERENCE ONLY. REFERENCE WINSOME FILING NO. 3 (SF229) FOR FULL ROADWAY PLAN AND PROFILES.



PCD FILE NO. CDR-21-012

WINSOME FILING NO. 3
EL PASO COUNTY, COLORADO
CONSTRUCTION DOCUMENTS
TWINKLING STAR LANE PROFILE



PROJECT NO.
196106001

SHEET

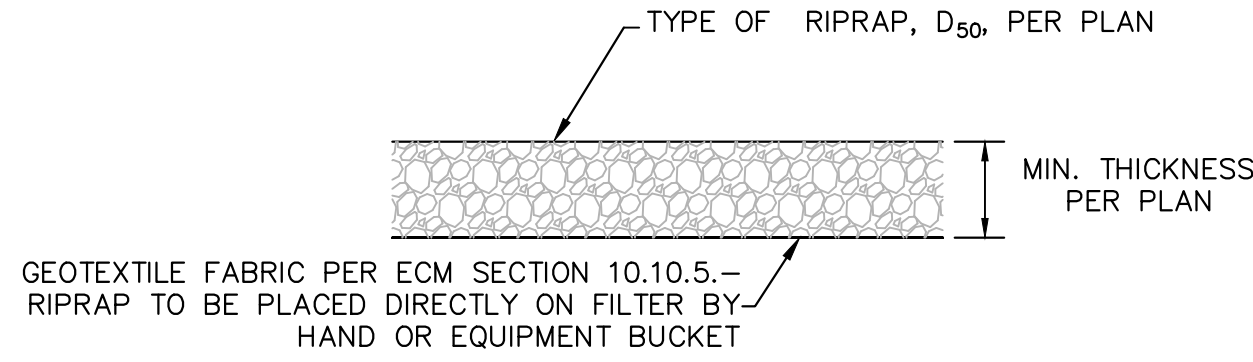
8

Kimley»Horn
2021 KIMLEY-HORN AND ASSOCIATES, INC.
2 North Nevada Avenue Suite 300
Colorado Springs, Colorado 80903 (719) 453-0180

DESIGNED BY: KRK
DRAWN BY: JRH
CHECKED BY: KRK
DATE: 9/3/2021

NO.	REVISION	BY	DATE	APPR.
3	COUNTY RESUBMITTAL #3	KRK	8/31/22	KRK
2	COUNTY RESUBMITTAL #2	KRK	4/6/22	KRK
1	COUNTY RESUBMITTAL #1	KRK	1/21/22	KRK

K:\COS_Civil\196106001_Winsome Filing No. 3\CADD\PlanSheets\Culvert CDs\196106001_DT.dwg Kofford, Kevin 8/31/2022 8:25 AM



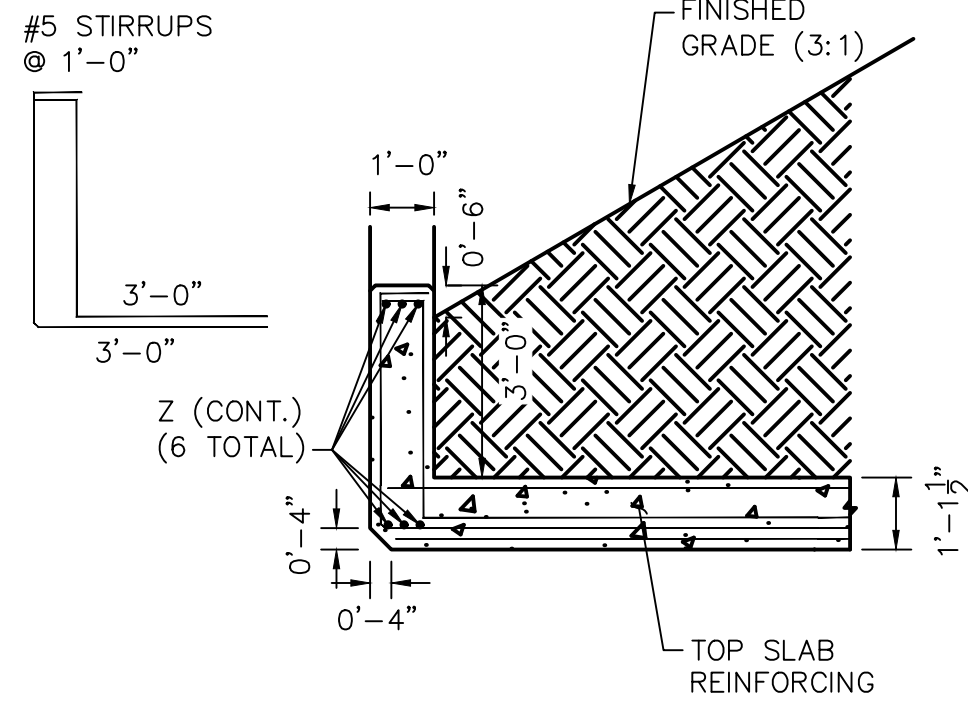
1. D50 = MEAN PARTICLE SIZE (INTERMEDIATE DIMENSION) BY WEIGHT.
2. RIP RAP SHALL BE PER PLAN AND SHALL BE MIXED WITH 30% SOIL TO 70% RIP RAP.
3. RIP RAP SECTION THICKNESS SHALL BE 2.0 TIMES THE SPECIFIED MEAN PARTICLE SIZE (I.E. D50 X 2.0 MINIMUM) PER ECM SECTION 10.10.3.
4. ALL RIP RAP SHALL BE UNDERLAIN WITH GEOTEXTILE FILTER FABRIC FOR STABILIZATION.
5. RIP RAP SHALL WRAP AROUND AND EXTEND 2' MIN. BEHIND FLUME AND FLARED END SECTIONS.

TYPICAL RIPRAP SECTION DETAIL

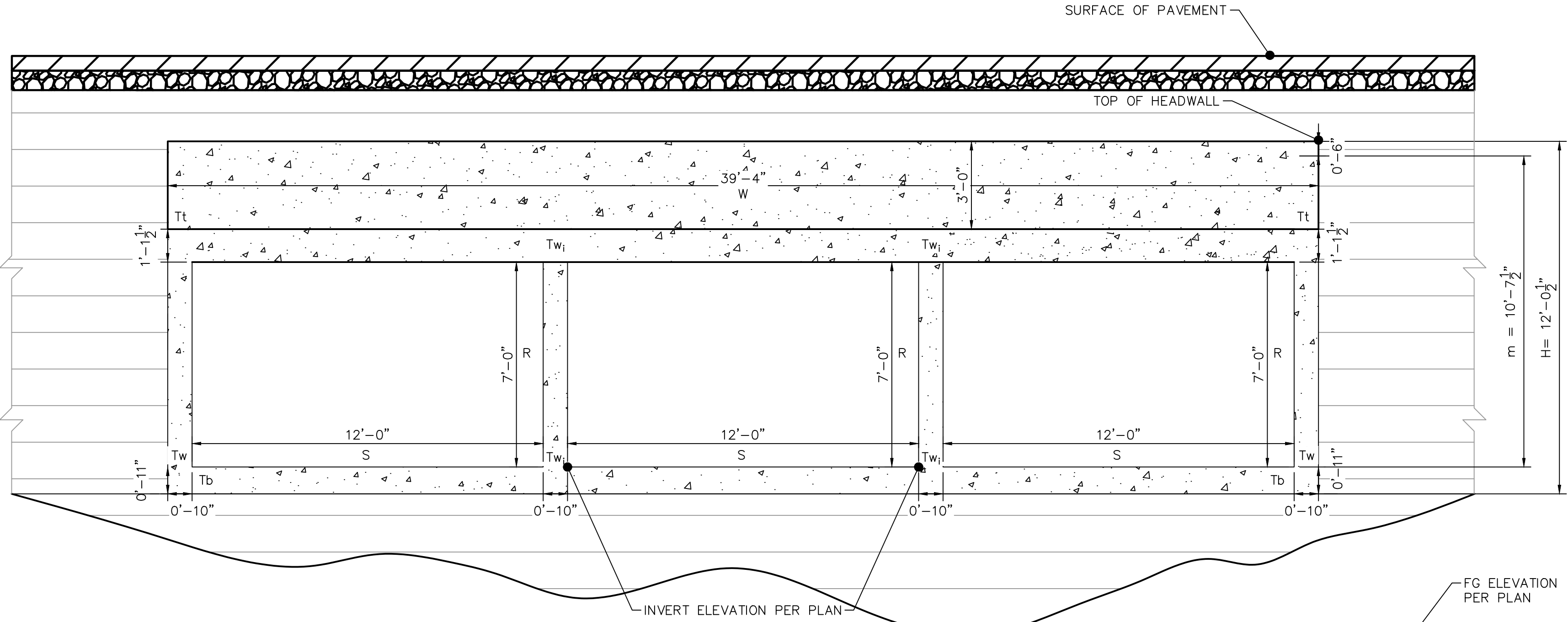
Table 9.5 Recommended wingwall flare angles (θ_a or θ_b)		
Skew Angle, θ°	θ_a°	θ_b°
90	60	60
80	50	70
70	45	80
60	40	90
50	30	90
40	20	100
30	15	105
< 30	Consult the Region Hydraulic Engineer	

NO SKEW-CULVERT 2

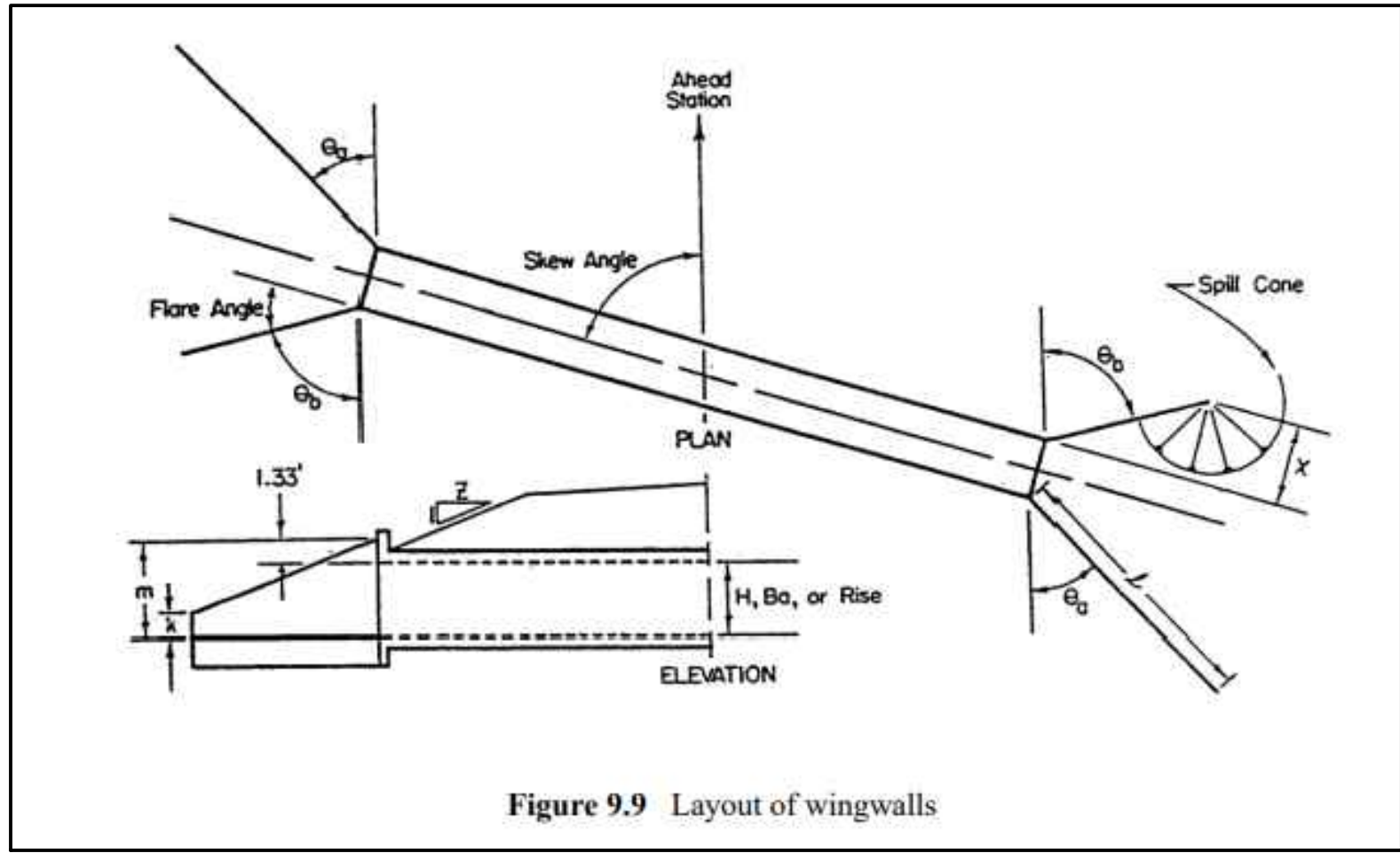
75° SKEW-CULVERT 1



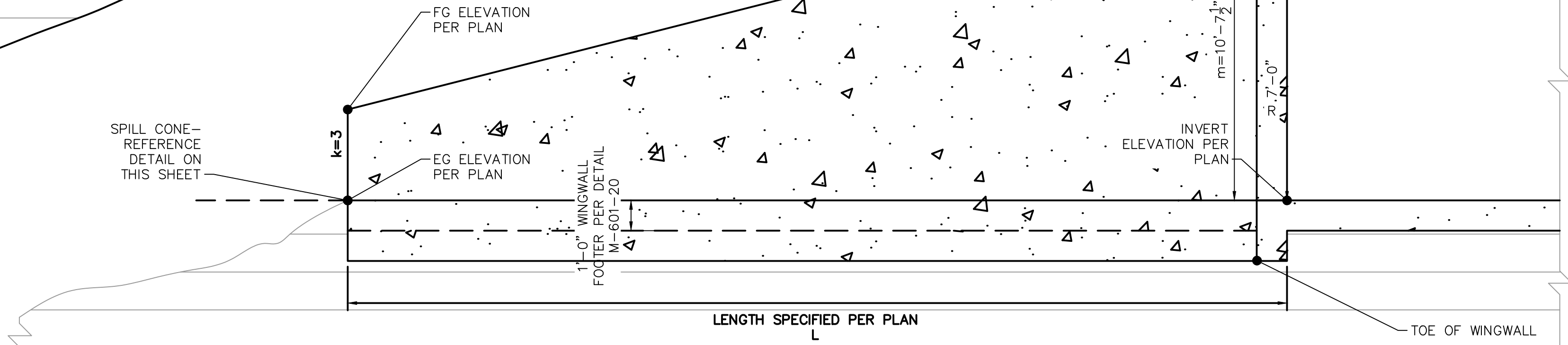
MODIFIED CULVERT HEADWALL SECTION DETAIL (A-A) FROM M-601-3
SCALE: 1"=3'



TRIPLE CONCRETE BOX CULVERT SECTION DETAIL
SCALE: 1"=3'



WINGWALL SPILL CONE CDOT DRAINAGE MANUAL FIGURE 9.9



WINGWALL (BOX CULVERT) SECTION DETAIL
SCALE: 1"=3'

NO.	BY	DATE	APPR.
3	KRK	8/31/22	KRK
2	KRK	4/6/22	KRK
1	KRK	1/21/22	KRK

Kimley»Horn
2021 KIMLEY-HORN AND ASSOCIATES, INC.
2 North Nevada Avenue Suite 300
Colorado Springs, Colorado 80903 (719) 453-0180

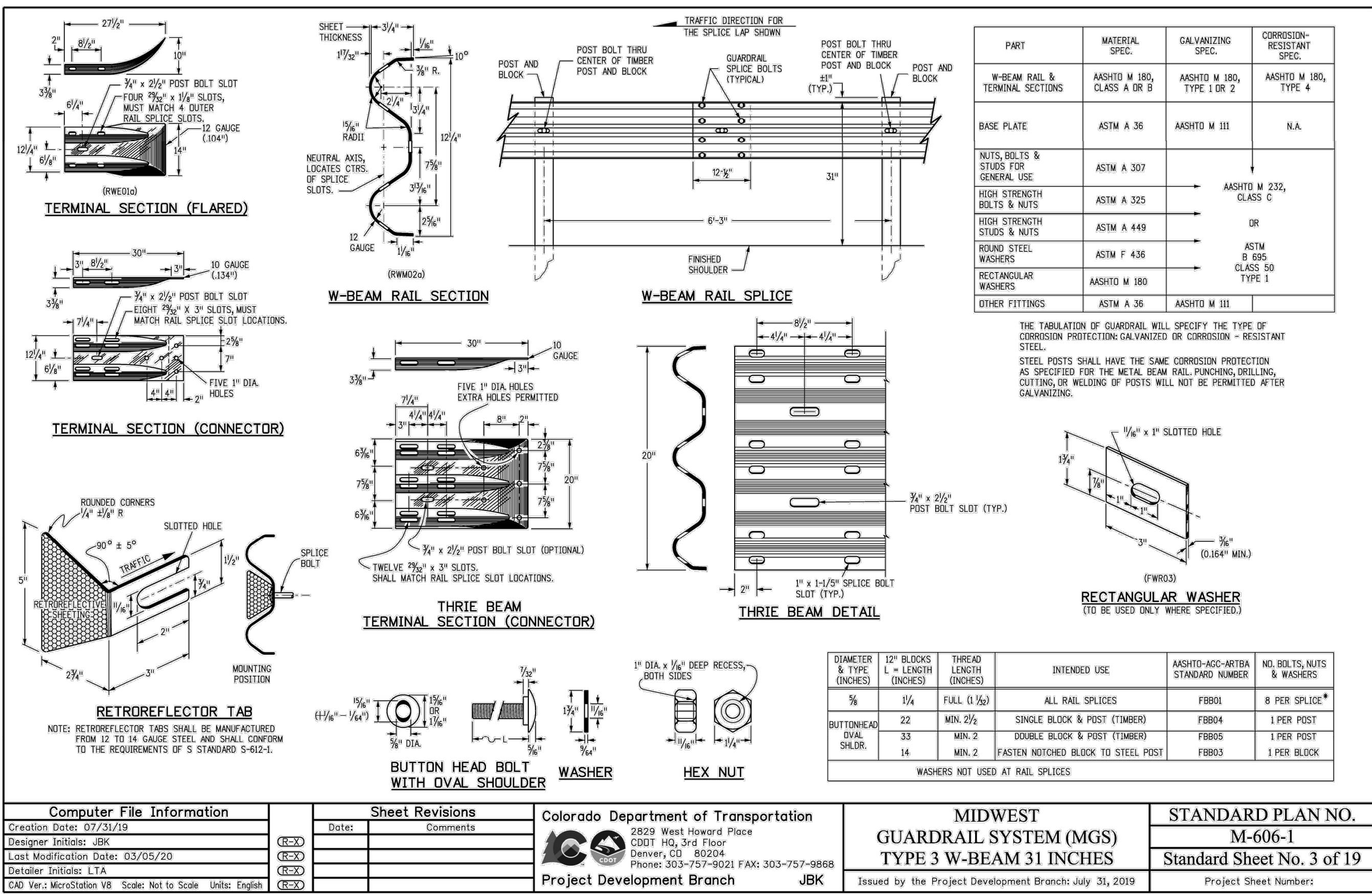
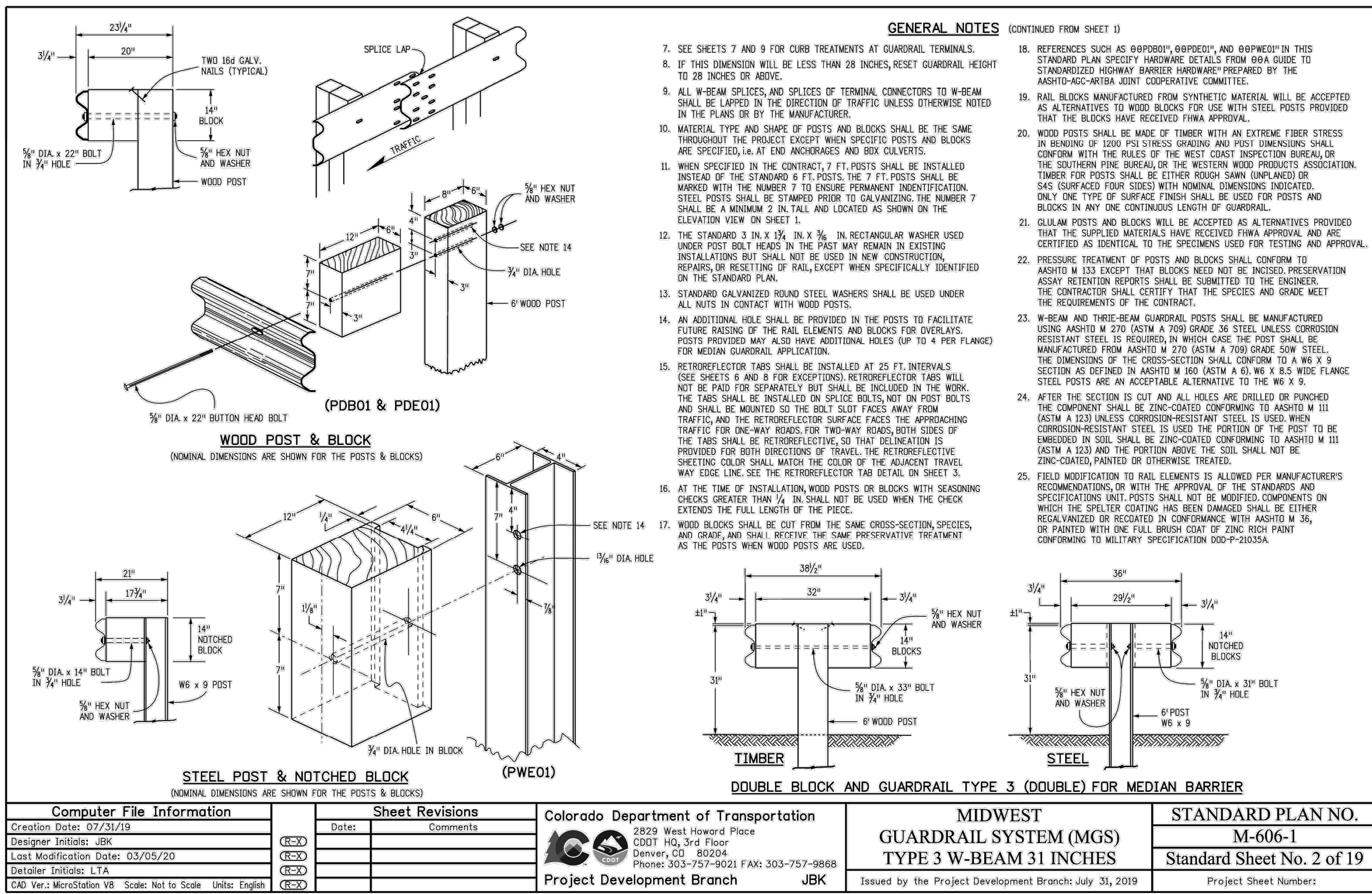
DESIGNED BY: KRK
DRAWN BY: JRH
CHECKED BY: KRK
DATE: 9/3/2021

WINSOME FILING NO. 3
EL PASO COUNTY, COLORADO
CONSTRUCTION DOCUMENTS
CULVERT DETAILS



PROJECT NO.
196106001
SHEET

STANDARD GUARDRAIL DETAILS

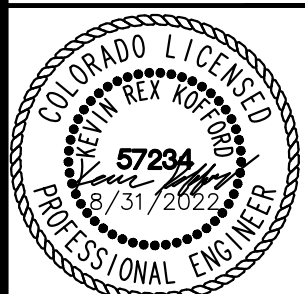


NO.	REVISION	BY	DATE	APPR.
1	COUNTY RESUBMITAL #1	KRK	1/21/22	KRK
2	COUNTY RESUBMITAL #2	KRK	4/6/22	KRK
3	COUNTY RESUBMITAL #3	KRK	8/31/22	KRK

Kimley»»Horn
2021 KIMLEY-HORN AND ASSOCIATES, INC.
2 North Nevada Avenue Suite 300
Colorado Springs, Colorado 80903 (719) 453-0180

DESIGNED BY: KRK
DRAWN BY: JRH
CHECKED BY: KRK
DATE: 9/3/2021

**WINSOME FILING NO. 3
EL PASO COUNTY, COLORADO
CONSTRUCTION DOCUMENTS
GUARDRAIL DETAILS**



PROJECT NO.
196106001

SHEET

12