

Client: Dave Gish  
 Widefield School District 3  
 1820 Main Street  
 Colorado Springs, CO 80911

### Webster Elementary School Addition & Alterations

Report Date: May 11, 2023  
 Work Order Date: Apr 12, 2023

Work Order No.: 22-8500.Concrete.0052; ver: 3  
 Reviewed by: Josiah Johnson

#### Concrete

Concrete Contractor: Peak  
 Placement Method: Tailgated  
 Total Quantity Placed: 8 yd<sup>3</sup>  
 Placement Location: West end of Trickle Channel  
 Comments: Steve Buellesbach observed and approved all test results and mix used

Performed by: Reid Blackburn  
 Finish Method: Vibrated- Internally|Trowel Finished|Hand Finished  
 Weather: Calm|Clear

#### On-site Notifications, Specification, and Mix Information

On-Site Notification(s)	Item / Structure Type	Test	Specified	Mix Design
Steve Buellesbach with Nunn Construction	General Concrete	Air Content (%)	-	-
		Slump (in)	-	-
	Mix Placed	Unit Weight (pcf)	-	-
	Holcim T3459211	Comp. Strength (psi)	-	-

#### Sampling (ASTM C172 / AASHTO R60 / CDOT CP61)

Sample No.	Location	Sampled From	Quantity (yd <sup>3</sup> )	Truck No.	Ticket No.	Batch Time	Test Time	Air Temp. (°F)	Water Added (gal)
51	See attached for test location 1	Point of Delivery	7.25	21	86505293	8:58 AM	9:38 AM	70	0

#### Field Tests (ASTM C138, C143, C231, and C1064 / AASHTO T119, T121, and T152)

Sample No.	Concrete Temp. (°F)	Slump (in)	Air Cont. (%)	Meas. Vol. (ft <sup>3</sup> )	Empty Meas. (lb)	Full Meas. (lb)	Unit Wt. (pcf)	Lab Samples Cast
51	80	5.25	6.3	0.250	7.25	41.73	137.9	Yes

#### Compressive Strength (ASTM C31 and C39 / AASHTO T22 and T23)

Sample No.	Lab ID	Age (d)	Diameter (in)	Area (in <sup>2</sup> )	Fracture Type	Max. Load (lb-f)	Corrected Strength (psi)	Strength at Acceptance (psi)
51	C5110	7	4.00	12.57	5 / Side	39,740	3,160	-
	C5111	28	4.00	12.57	5 / Side	53,500	4,260	4,260
	C5112	28	4.00	12.57	5 / Side	52,980	4,220	4,220
	C5113	28	4.00	12.57	5 / Side	50,910	4,050	4,050
<b>Average Compressive Strength (psi):</b>								<b>4,180</b>

Results apply only to the specific items and locations referenced and at the time of testing, observations or special inspections. Unless noted otherwise, specimens were received in adequate condition. Compressive strength specimens, if tested, were capped in accordance with ASTM C1231 or ASTM C617, as applicable. This report should not be reproduced, except in full, without the written permission of GROUND Engineering Consultants, Inc.

## Webster Elementary School Addition & Alterations

Report Date: May 11, 2023

Work Order No.: 22-8500.Concrete.0052; ver: 3

Work Order Date: Apr 12, 2023

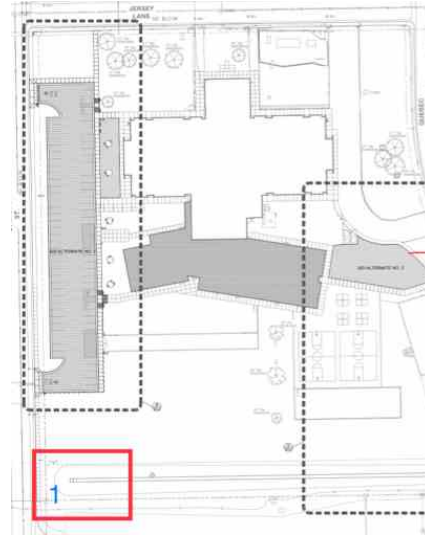
Reviewed by: Josiah Johnson

### Concrete

#### Photos



Concrete being tailgated in form



Red box indicates work area and blue numbers indicate test location