



Nunn Construction, Inc.
925 Elkton Drive
Colorado Springs , Colorado 80907
P: (719) 599-7710
F: (719) 599-4744

Project: 2111 Webster Elementary Remodel
445 Jersey Lane
Colorado Springs, Colorado 80911

RFI #186: Storm Pipe in Concrete

Status	Open		
To	Todd Kimes (LKA Partners Inc.)	From	Steve Buellesbach (Nunn Construction, Inc.)
Date Initiated	Mar 6, 2023	Due Date	Mar 9, 2023
Location	Pond	Project Stage	Course of Construction
Cost Impact	TBD	Schedule Impact	TBD
Spec Section	Cost Code		
Drawing Number	C8.0, C8.1	Reference	
Linked Drawings			
Received From	Logan Chavez (Latcon)		
Copies To	Brandon Albright (Nunn Construction, Inc.), Marc Bregar (Latcon), Michael Britton (Nunn Construction, Inc.), Steve Buellesbach (Nunn Construction, Inc.), Logan Chavez (Latcon), Michael Moore (Nunn Construction, Inc.)		

Activity

Question

Question from Steve Buellesbach Nunn Construction, Inc. on Monday, Mar 6, 2023 at 10:50 AM MST

Drawing C8.0 shows the finish grade elevation of the emergency overflow cut-off wall to be 5659.30', and the wall detail on C8.1 shows the bottom of footer 4.5' below finish grade. This would put the bottom elevation of the concrete at 5654.80'. The flow line elevation is 5654.00' and the pipe is 18", making the top elevation of the pipe 5655.50'. This would put the pipe approximately 7" into the concrete. Is it acceptable for the pipe to sit in the concrete foundation of the emergency overflow cut-off wall?

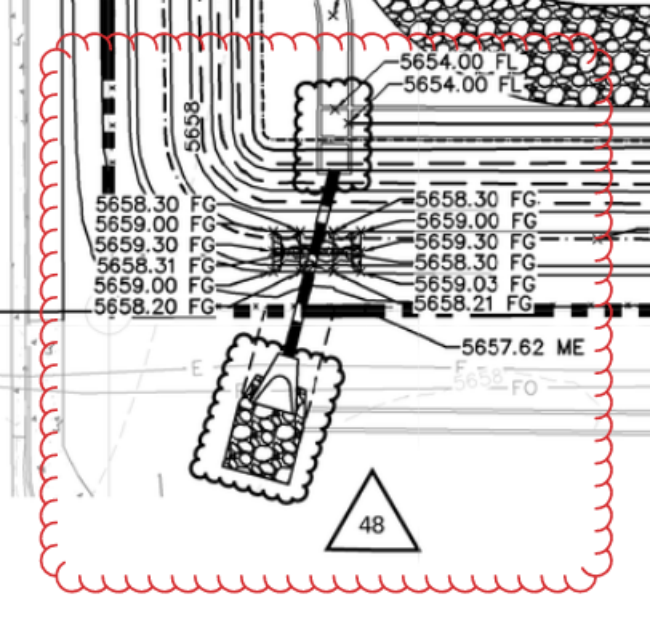
Attachments

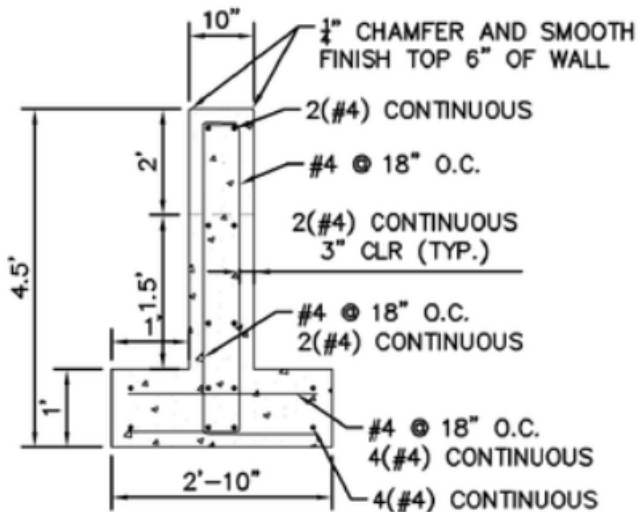
[186-C8.0.PNG](#), [186-C8.1.PNG](#), [186-Pipe.jpg](#), [186-Pipe 2.jpg](#)

Awaiting an Official Response

Yes, this is acceptable.

Eric Gunderson, PE
Kimley-Horn and Associates, Inc.
3/8/23





EMERGENCY OVERFLOW
CUT-OFF WALL SECTION D

N.T.S.



