

KEYMAP

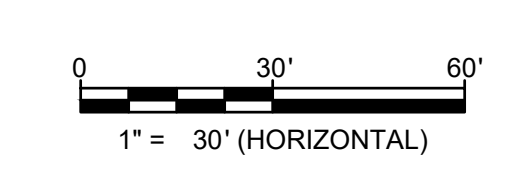
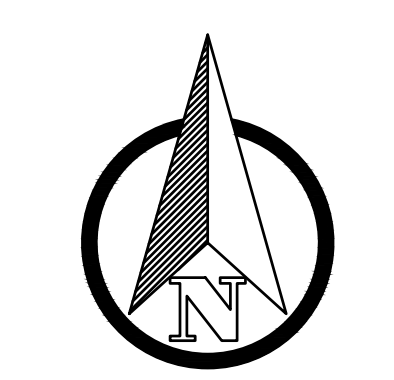


KEYNOTES:

- ① ENTRY GATE
- ② ENTRY GATE KEY PAD
- ③ 2 STORY OFFICE
- ④ DISPLAY BUILDING (30'X30')
- ⑤ DISPLAY BUILDING (30'X40')
- ⑥ 6" CURB AND GUTTER (SPILL)
- ⑦ 6" CURB AND GUTTER (CATCH)
- ⑧ 4' CROSSSPAN
- ⑨ 9'X19' ADA PARKING STALL
- ⑩ SIDEWALK
- ⑪ LANDSCAPE AREA
- ⑫ STOP SIGN
- ⑬ DETENTION POND
- ⑭ RETAINING WALLS
- # PARKING COUNT
- 1 PROPOSED WATER
- 2 PROPOSED FIRE HYDRANT
- 3 PROPOSED SANITARY
- 4 PROPOSED STORM
- 5 PROPOSED UTILITY CONNECTION POINT

NOTES:

- ALL RADIAL DIMENSIONS ARE TO FLOWLINE UNLESS OTHERWISE NOTED
- ALL HORIZONTAL DIMENSIONS ARE TO FLOWLINE AND BUILDING EDGE UNLESS OTHERWISE NOTED

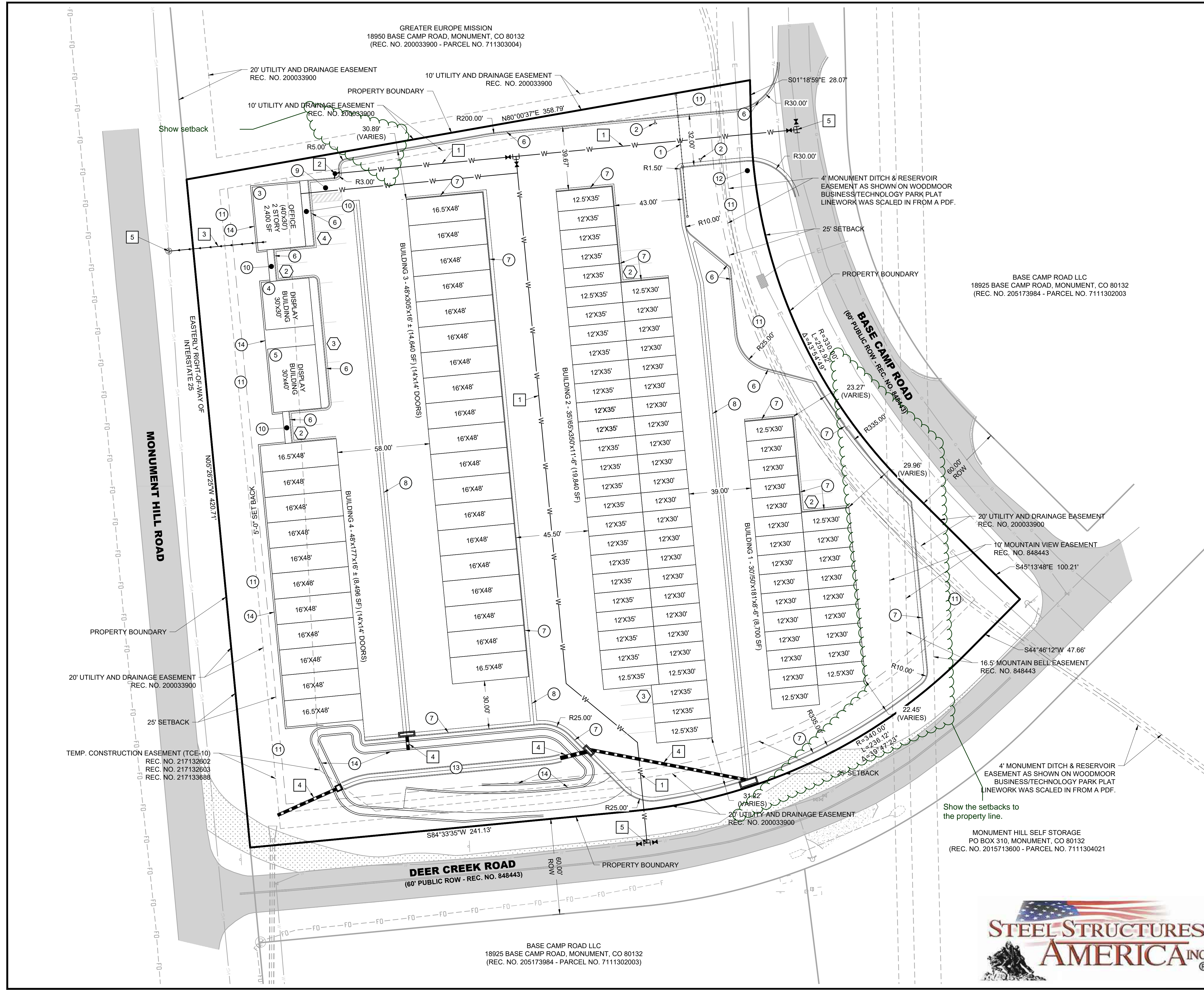


REV. NO.	DESCRIPTION	DATE

SITE DEVELOPMENT PLAN
MONUMENT STEEL STRUCTURES
 SITE AND UTILITY PLAN
 18910 BASE CAMP ROAD
 MONUMENT, COLORADO

PROJ NO: Steel Structures
 ENG :
 CHKD:
 DATE: 03/25/2019

SHEET NUMBER
SP
 2 OF 7



GREATER EUROPE MISSION
 18950 BASE CAMP ROAD, MONUMENT, CO 80132
 (REC. NO. 200033900 - PARCEL NO. 711303004)

BASE CAMP ROAD LLC
 18925 BASE CAMP ROAD, MONUMENT, CO 80132
 (REC. NO. 205173984 - PARCEL NO. 7111302003)

MONUMENT HILL SELF STORAGE
 PO BOX 310, MONUMENT, CO 80132
 (REC. NO. 2015713600 - PARCEL NO. 7111304021)



P:\Steel Structures - Monument, CO\18 - Drawings\Research\18-Development Plans (2019)\11-Site and Utility Plan.dwg, 3/24/2019 10:31:12 AM, rjoneson, 1:1

