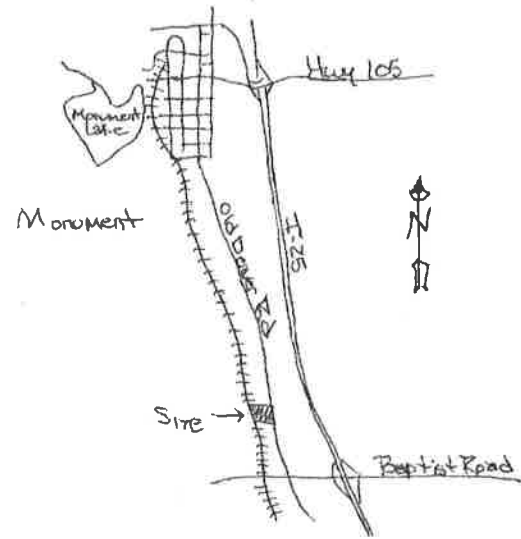
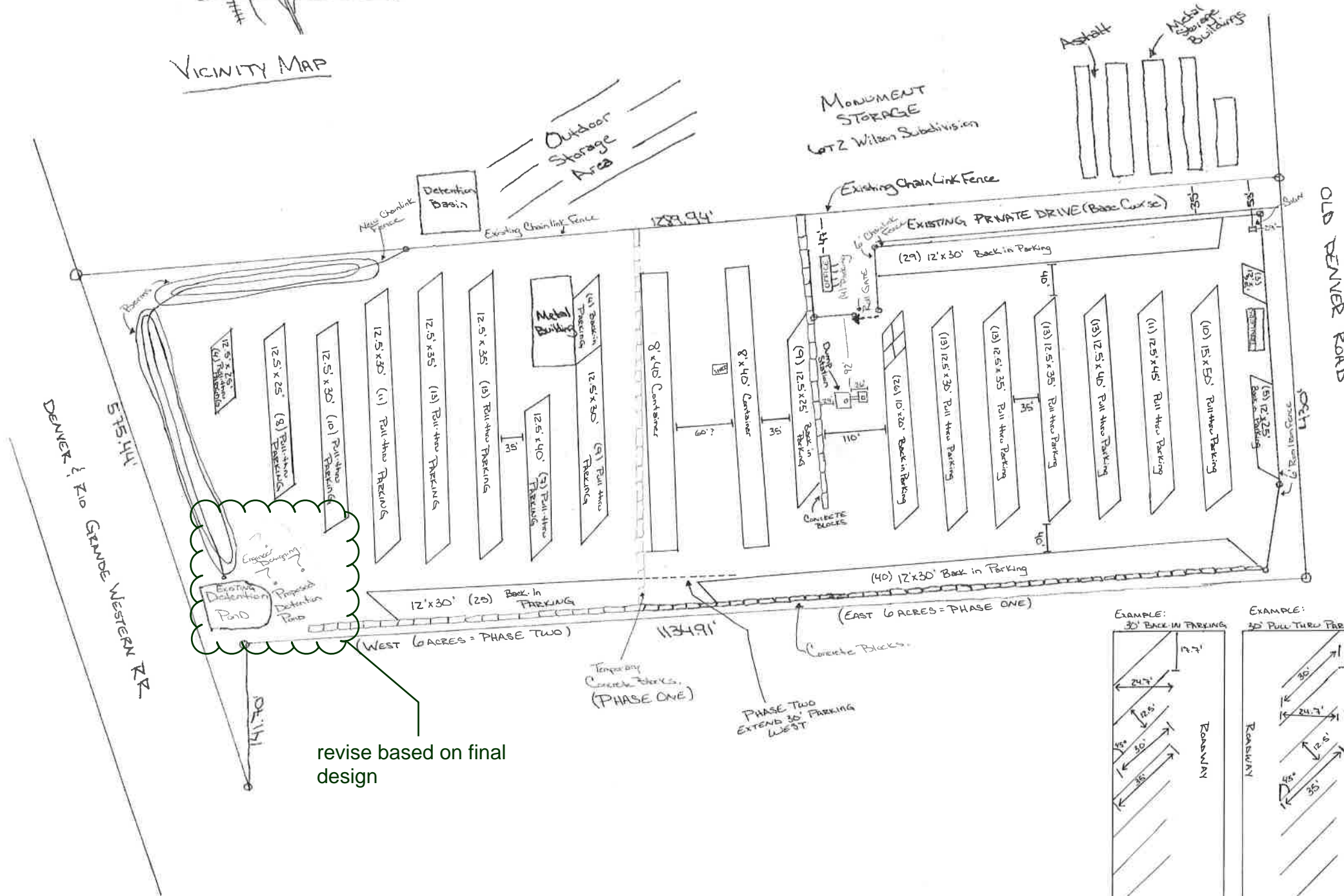
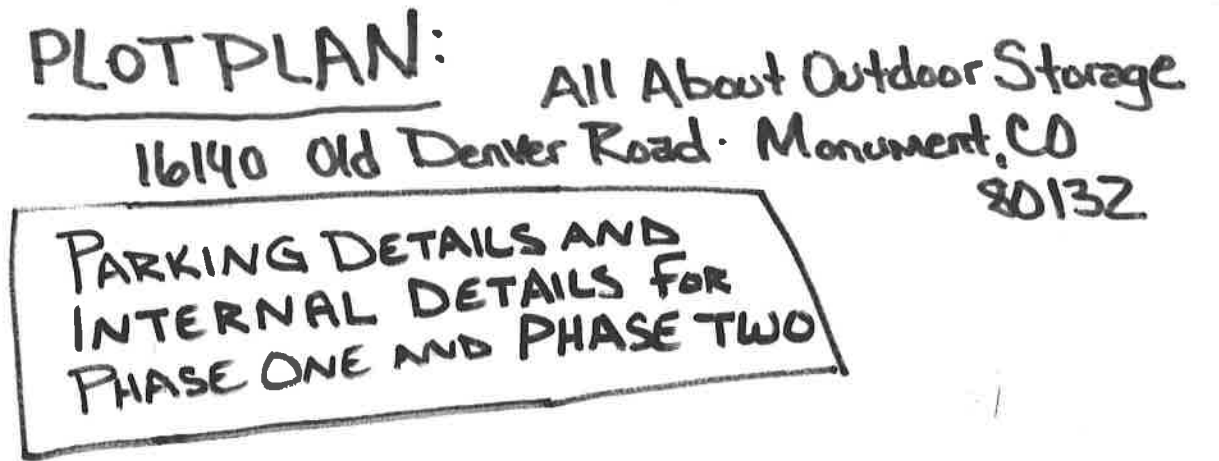


The following note should be added to all site development plans or non-residential site plans, as applicable, prior to PCD approval:

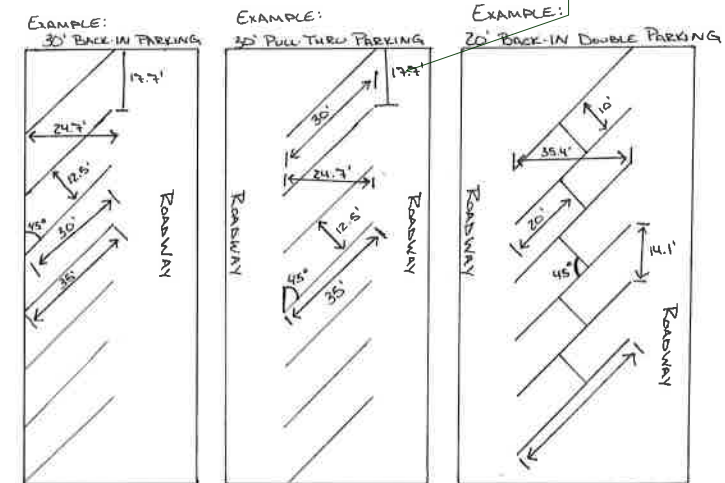
The parties responsible for this plan have familiarized themselves with all current accessibility criteria and specifications and the proposed plan reflects all site elements required by the applicable ADA design standards and guidelines as published by the United States Department of Justice. Approval of this plan by El Paso County does not assure compliance with the ADA or any regulations or guidelines enacted or promulgated under or with respect to such laws.



### VICINITY MAP



how are the spaces indicated on the ground? curb stop? painted?



Add PCD File #

# LANDSCAPE PLAN

16140 Old Denver Rd.  
Monument, CO  
80132

↙↘↙↘  
Natural Grass  
El Paso Grass Seed

⬤⬤⬤  
RipRAP  
Red-Grey granite- Angular  
Approx. 5-24 inches in size

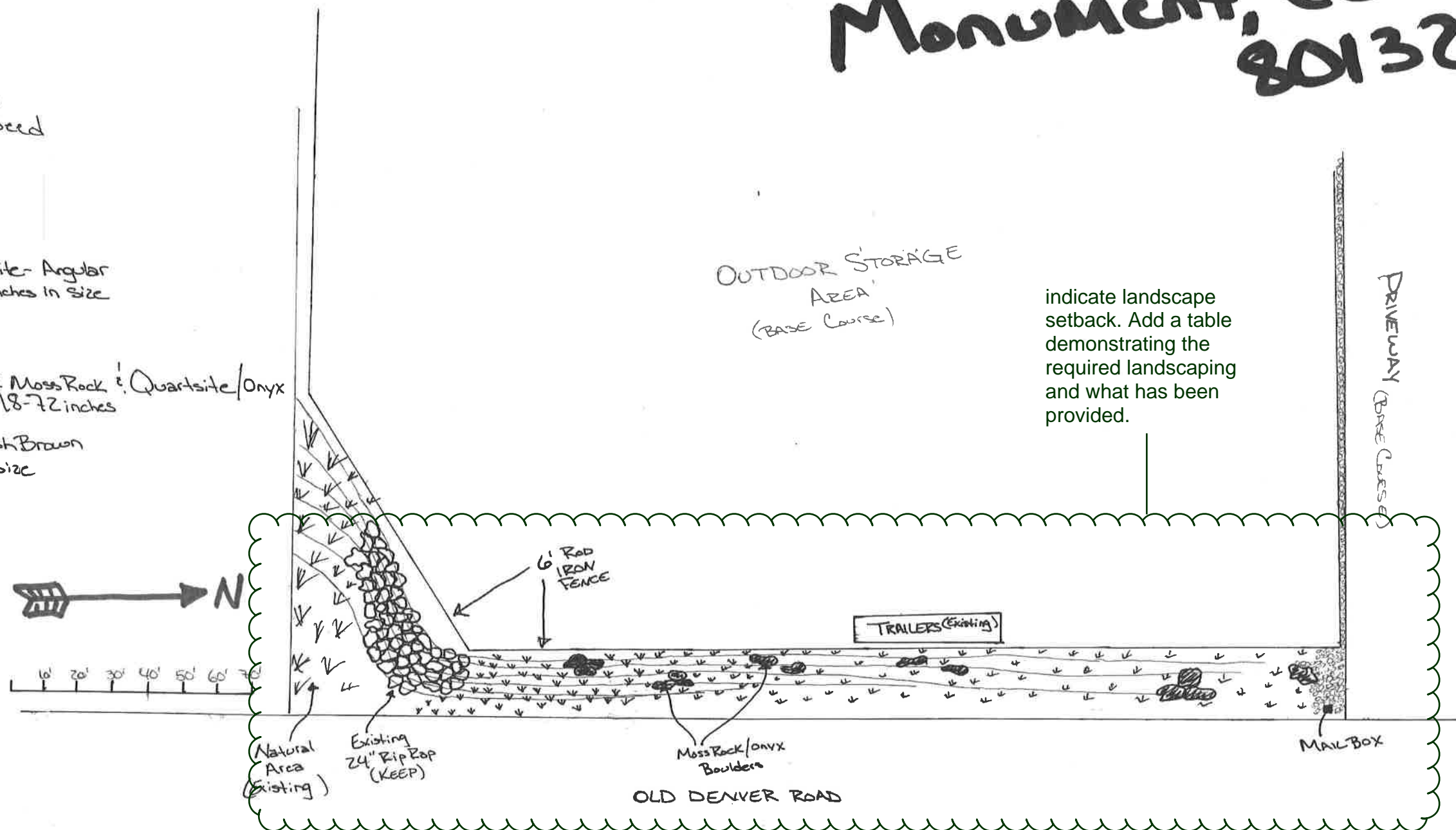
⬤⬤  
Boulders  
Combination of Moss Rock & Quartzite/Onyx  
Approx. size: 18-72 inches

⬤⬤⬤  
Cobblestone- Reddish Brown  
2"-8" inches in size

OUTDOOR STORAGE  
AREA  
(BASE COURSE)

indicate landscape  
setback. Add a table  
demonstrating the  
required landscaping  
and what has been  
provided.

DRIVEWAY  
(BASE COURSE)

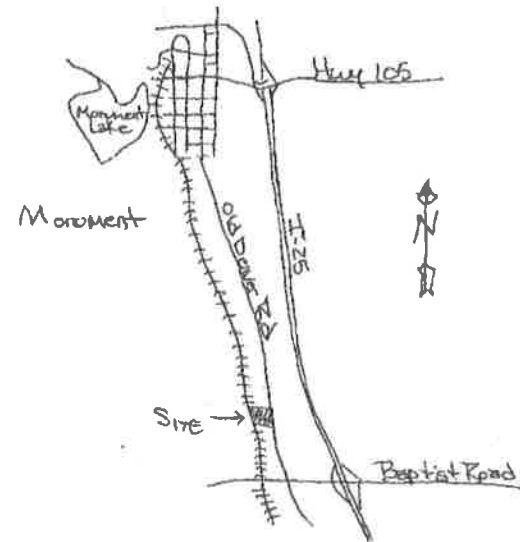




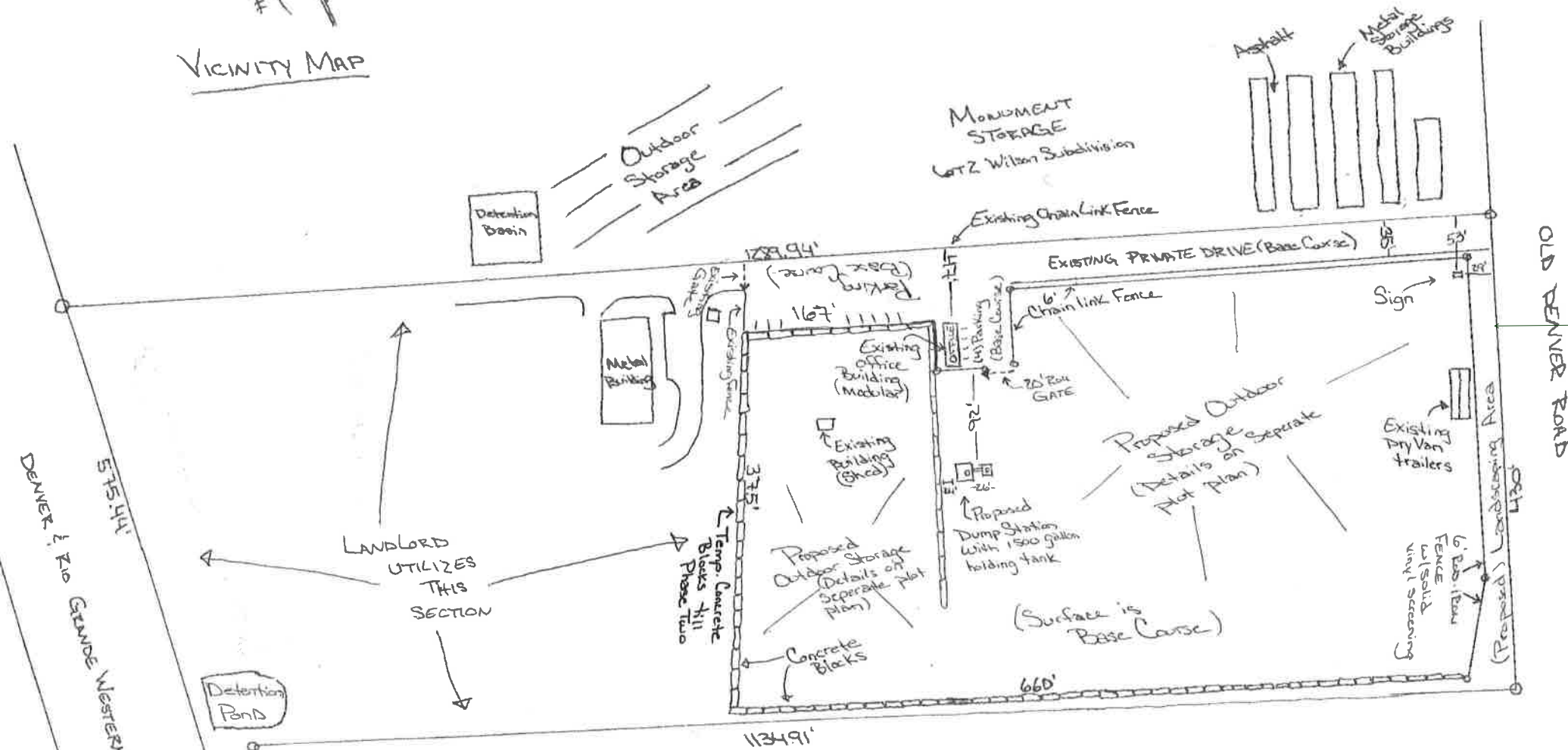
# PLOT PLAN:

All About Outdoor Storage  
16140 Old Denver Road · Monument, CO  
80132

## Phase One



VICINITY MAP

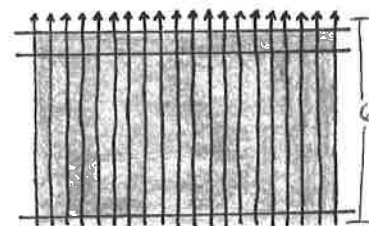


add details to sign plan submitted.

### Structures to Remain:

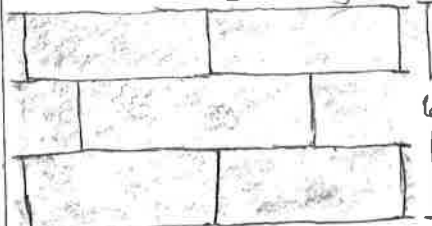
- Existing Office (Modular) Building  
Height: 10 feet  
Length: 40 feet  
Width: 12 feet  
- Used as Office with front desk located at the North end of the building.
- Existing Building (Shed)  
Height: 10 feet  
Length: 10 feet  
Width: 15 feet  
- Used to store inventory
- Existing Dry Van Trailers

EXAMPLE of RAIL-IRON FENCE with Solid Vinyl screening attached.



Example of Concrete Blocks

Dimensions: 2' High  
2' wide  
6-8' Long



Example of parking spaces.

- 4 to the East of the office
- 15 to the North/West of the office



Example of SIGN



- 53' South of Monument Storage's Chain link fence.
- 29' East of Old Denver

# PLOT PLAN:

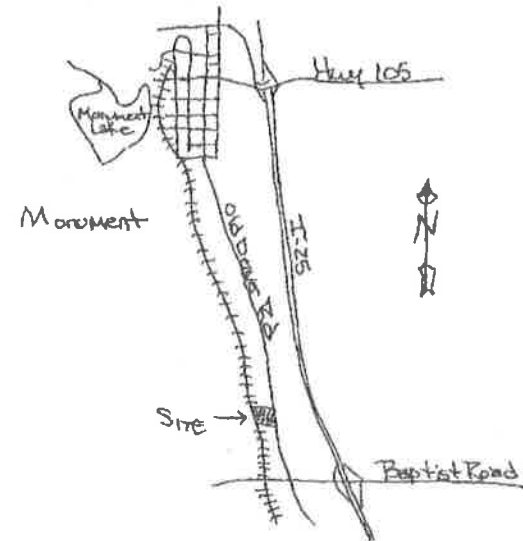
All About Outdoor Storage

16140 Old Denver Road - Monument, CO

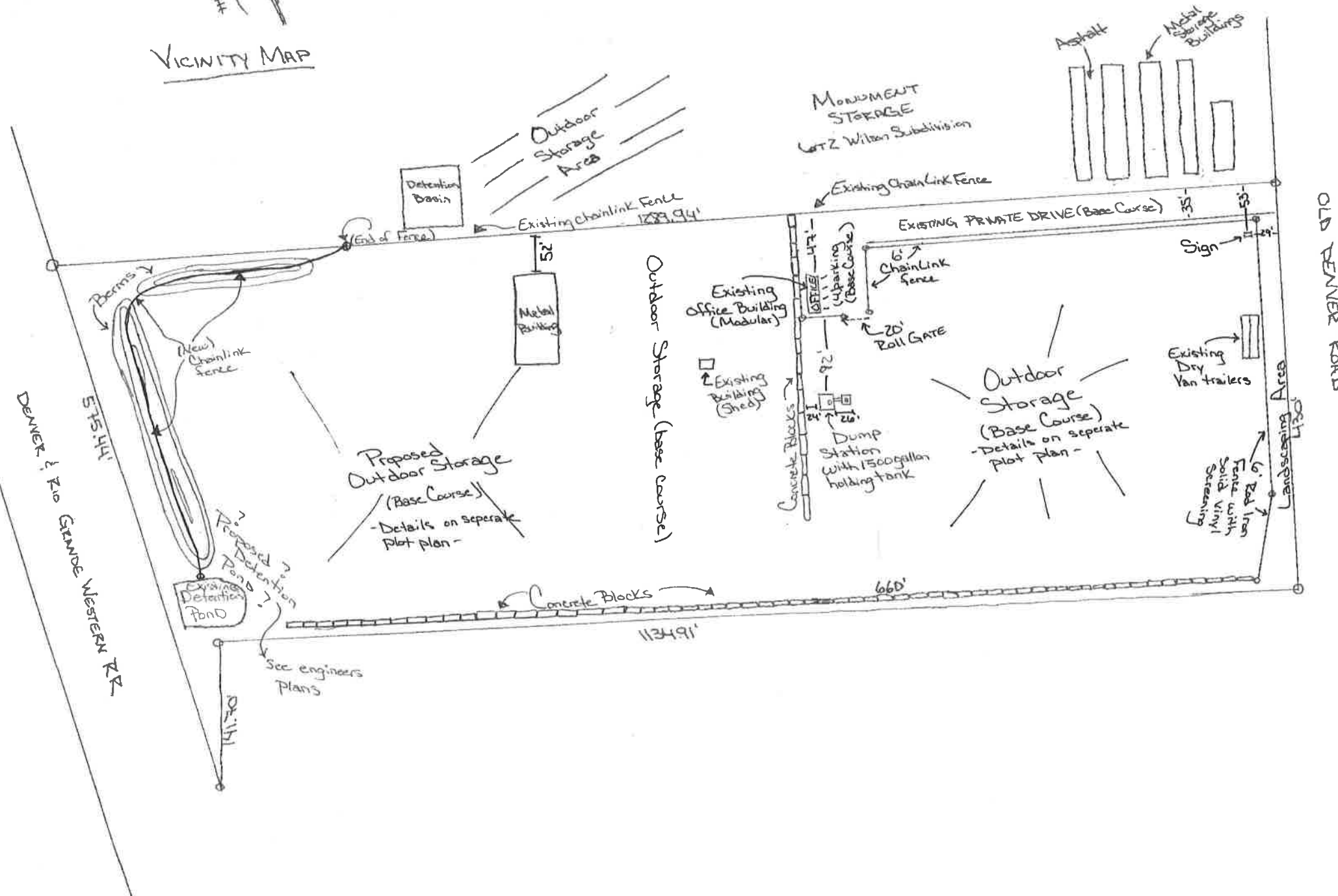
80132

## Phase Two

• Extend Outside Storage to the West Side of the property.



VICINITY MAP



### Structures to Remain:

- Existing Office (Modular) Building
  - Height: 10 feet
  - Length: 40 feet
  - Width: 12 feet
  - Used as Office with front desk located at the North end of the building.
- Existing Building (Shed)
  - Height: 10 feet
  - Length: 10 feet
  - Width: 15 feet
  - Used to store inventory
- Existing Dry Van Trailers
- Existing Metal Building
  - Height: 19 feet
  - Length: 120 feet
  - Width: 60 feet