



## **Final Acceptance Punchlist**

### **El Paso County – Department of Public Works - Stormwater Section**

Project Name:	Falcon Marketplace
EDARP Filing Number(s):	SF191, CON204, ASB233
ESQCP Number:	ESQ209
Attendees:	DPW SW: Christina Prete, Ben Jones, Erica Rylander, Joshua Augustenborg DPW Development Services: Jeff Rice, Brad Walters, Gilbert LaForce Developer: Karen Levitt Ortiz, Doug McNeal, Kate Varnum, Chris Heilbrun
Date of Walk-through:	10-22-2024
Walk-through Number:	1st

*A pre-walk-through was completed by DPW Stormwater on 10-21-2024. The following personnel were in attendance: Ben Jones, Erica Rylander, and Josh Augustenborg.*

The following items are to be addressed prior to scheduling a follow-up walk-through. Once all Punchlist items are completed, please contact the Stormwater Inspector to request a follow-up walk-through.

### **Final Acceptance (FA) Items**

#### **Sitewide**

1. Additional seeding needed in areas along western perimeter of site to meet final stabilization requirements (Photo 1).
2. Additional seeding needed throughout area south of the SW roundabout to meet final stabilization requirements (Photo 2).
3. Backfill and seed trench line where wattles were removed throughout area south of the SW roundabout (Photo 3).
4. Remove rock socks from in front of culvert under roundabout entrance from Woodmen Rd (Photo 4).
5. Repair minor erosion just upstream of culvert under roundabout entrance from Woodmen Rd (Photo 5).
6. Remove concrete debris and sediment from inlets throughout site (Photo 6).
7. Repair rill erosion in several areas along southern embankment of drainage channel along Woodmen Rd (Photo 7).
8. Additional seeding needed in several areas along northern and southern embankments of drainage channel along Woodmen Rd to meet final stabilization requirements (Photos 8, 9, 10).
9. Additional seeding needed throughout SE corner of site to meet final stabilization requirements (Photo 11).
10. Additional seeding needed throughout NE corner of site to meet final stabilization requirements (Photos 12, 13).
11. Remove rock socks from curb inlet near NE roundabout (Photo 14).
12. Remove sediment & rock just west of curb inlet at NE corner of site (Photo 15).
13. Remove straw wattles from back of curbs at NE corner of site. Backfill and seed trench line where straw wattles are removed (Photos 16, 17).
14. Submit a spec sheet and PO/receipt for the grass seed mix that was purchased and used.
15. Submit a materials certification for the clay liner materials.
16. Complete and return as much of the attached PCM Contact Information table as possible for the owner and maintenance entity of the PCM(s). Return completed form to [EricaRylander@elpasoco.com](mailto:EricaRylander@elpasoco.com).
17. Executed Maintenance Agreement for 96" pipe.

### Pond 3 (Southwest EDB)

18. Remove and properly dispose of sediment from micropool (Photo 18).
19. Remove rock socks from trickle channel in front of micropool (Photo 18).
20. Remove rock socks from forebay (Photo 19).
21. Remove and properly dispose of sediment from inside of inflow pipe (Photo 19).
22. Reestablish maintenance access road (Photo 20).
23. Additional seeding needed on northern embankment to meet final stabilization requirements (Photo 21).

### Pond 2 (South EDB)

24. Remove and properly dispose of sediment and debris from micropool (Photo 22).
25. Repair disturbance on embankments/bottom of EDB from equipment accessing EDB for maintenance. Seed disturbed areas (Photos 23, 24).
26. Additional seeding needed in several areas along northern embankment to meet stabilization requirements (Photo 25).

### Pond SR4 (North EDB)

27. Additional seeding needed throughout EDB to meet stabilization requirements (Photos 26-32):
28. Remove rock socks at eastern forebay (Photo 33).
29. Repair rill erosion on embankment along outlet structure (Photo 34).
30. Repair rill erosion on western embankment (Photo 35).
31. Remove sediment accumulation within EDB micropool.
32. Remove sediment and reestablish maintenance access road to trickle channel east of outlet structure (Photo 36).
33. Repair erosion and stabilize areas above grouted riprap (Photo 37).
34. Remove rock socks from inflow above grouted riprap at NE corner of EDB (Photo 38).
35. Remove straw wattles at NE corner of EDB (at top of embankment). Backfill and seed trench line where straw wattles are removed (Photo 39).
36. Remove vegetation from grouted riprap and repair grout as needed following removal of vegetation (Photo 40).
37. Repair disturbance from equipment accessing EDB for maintenance on northern and southern embankments. Reseed areas following repair (Photos 41 and 42).
38. Ensure watertight seal at orifice plate. Water was observed entering outlet structure at bottom of orifice plate (Photo 43).
39. Ensure outlet structure is watertight. Groundwater was observed entering the outlet structure through a crack in the concrete wall, adjacent to the outlet pipe.
40. Remove woody vegetation adjacent to trickle channel on west side of EDB (Photo 44).
41. Address groundwater infiltration throughout pond, including but not limited to areas discussed during the FA walk (i.e., around trickle channel on west side of EDB, saturated soils on western and northern embankments, and saturated soils in bottom of EDB on west side of EDB and below grouted riprap, etc.). Additional Final Acceptance items related to the extent and function of the clay liner may be required, pending engineer of record (EOR) determination.

## **As-Built Drawings and Pond Certification Information**

Per ECM Chapter 5.10.6 As-Built drawings shall be submitted at the initiation of the Preliminary Acceptance process. Approved As-Built drawings are not required to enter the 2-yr defect warranty period (Final Acceptance). As-Built drawings must be approved by the ECM Administrator prior to Final Acceptance.

Please have your engineer submit the following items:

- Revised Engineering Record Drawings (As-Built drawings) consistent with Section 5.10.6 of the ECM.
  - See EPC comments to ASB233, dated February 15, 2024.
  - As-Built drawings must be updated to include any design and installation modifications to existing clay liner at Pond SR4 .

## Photos:



**Photo 1:** Additional seeding needed in areas along western perimeter of site.



**Photo 2:** Additional seeding needed throughout area south of the SW roundabout.



**Photo 3:** Backfill and seed trench line where wattles were removed throughout area south of the SW roundabout.



**Photo 4:** Remove rock socks from in front of culvert under roundabout entrance from Woodmen Rd.

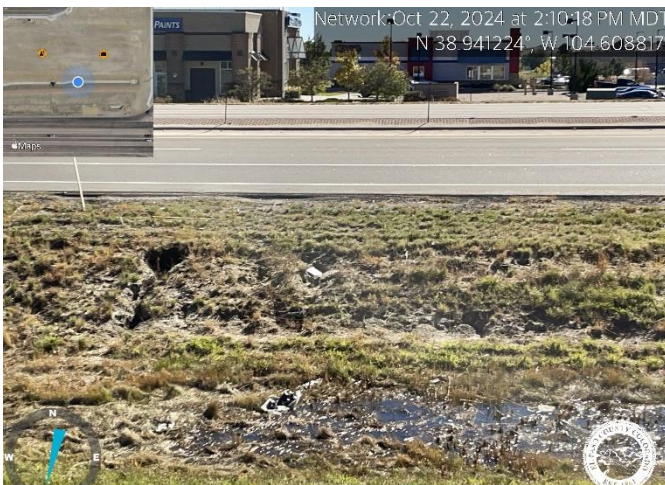




**Photo 5:** Repair minor erosion just upstream of culvert under roundabout entrance from Woodmen Rd.



**Photo 6:** Remove concrete debris and sediment from inlets throughout site.



**Photo 7:** Repair rill erosion in several areas along southern embankment of drainage channel along Woodmen Rd.



**Photo 8:** Additional seeding needed in several areas along northern and southern embankments of drainage channel along Woodmen Rd.





**Photo 9:** Additional seeding needed in several areas along northern and southern embankments of drainage channel along Woodmen Rd.



**Photo 10:** Additional seeding needed in several areas along northern and southern embankments of drainage channel along Woodmen Rd.



**Photo 11:** Additional seeding needed throughout SE corner of site.



**Photo 12:** Additional seeding needed throughout NE corner of site.





**Photo 13:** Additional seeding needed throughout NE corner of site.



**Photo 14:** Remove rock socks from curb inlet near NE roundabout.



**Photo 15:** Remove sediment & rock just west of curb inlet at NE corner of site. Additional seeding needed throughout NE corner of site.



**Photo 16:** Backfill and seed trench line where straw wattles were removed. Additional seeding needed throughout NE corner of site.





**Photo 17:** Remove straw wattles from back of curbs at NE corner of site. Backfill and seed trench line where straw wattles are removed.



**Photo 18:** Remove and properly dispose of sediment from micropool. Remove rock socks from trickle channel in front of micropool (Pond 3).



**Photo 19:** Remove rock socks from forebay. Remove and properly dispose of sediment from inside of inflow pipe (Pond 3).



**Photo 20:** Reestablish maintenance access road (Pond 3).

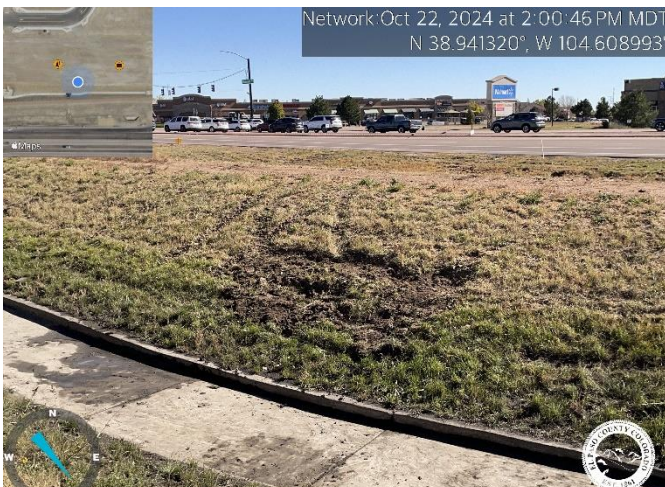




**Photo 21:** Additional seeding needed on northern embankment (Pond 3).



**Photo 22:** Remove and properly dispose of sediment and debris from micropool (Pond 2).



**Photo 23:** Repair disturbance from equipment accessing EDB for maintenance on northern embankment. Seed disturbed areas (Pond 2).



**Photo 24:** Repair disturbance from equipment accessing EDB for maintenance on northern embankment/EDB bottom. Seed disturbed areas (Pond 2).





**Photo 25:** Additional seeding needed in several areas along northern embankment (Pond 2).



**Photo 26:** Additional seeding needed in several areas throughout EDB (Pond SR4).



**Photo 27:** Additional seeding needed in several areas throughout EDB (Pond SR4).



**Photo 28:** Additional seeding needed in several areas throughout EDB (Pond SR4).





**Photo 29:** Additional seeding needed in several areas throughout EDB (Pond SR4).



**Photo 30:** Additional seeding needed in several areas throughout EDB (Pond SR4).



**Photo 31:** Additional seeding needed in several areas throughout EDB (Pond SR4).



**Photo 32:** Additional seeding needed in several areas throughout EDB (Pond SR4).





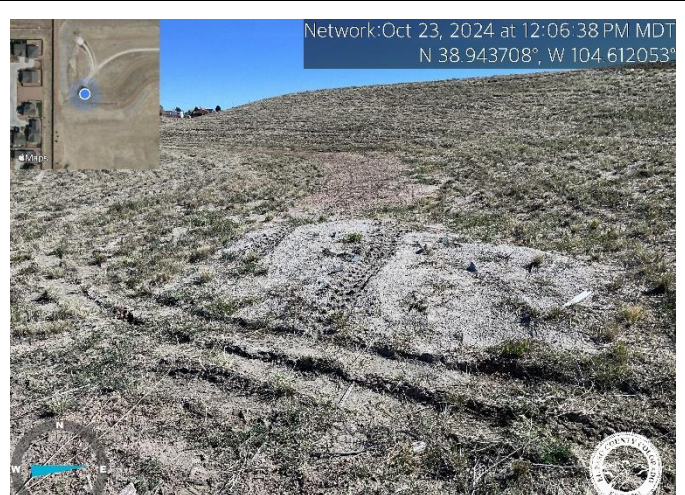
**Photo 33:** Remove rock socks at eastern forebay (Pond SR4).



**Photo 34:** Repair rill erosion on embankment along outlet structure (Pond SR4).



**Photo 35:** Repair rill erosion on western embankment (Pond SR4).



**Photo 36:** Remove sediment and reestablish maintenance access road to trickle channel east of outlet structure (Pond SR4).





**Photo 37:** Repair erosion and stabilize areas above grouted riprap (Pond SR4).



**Photo 38:** Remove rock socks from inflow above grouted riprap at NE corner of EDB (Pond SR4).



**Photo 39:** Remove straw wattles at NE corner of EDB (at top of embankment). Backfill and seed trench line where straw wattles are removed (Pond SR4).



**Photo 40:** Remove vegetation from grouted riprap and repair grout as needed following removal of vegetation (Pond SR4).

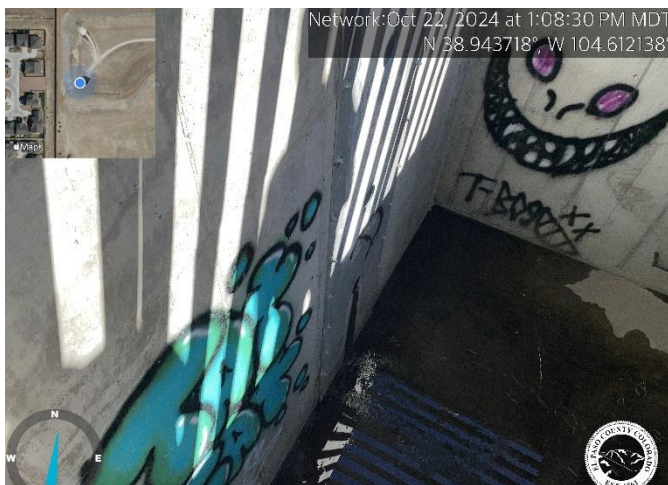




**Photo 41:** Repair disturbance from equipment accessing EDB for maintenance on northern and southern embankments. Reseed areas following repair (Pond SR4).



**Photo 42:** Repair disturbance from equipment accessing EDB for maintenance on northern and southern embankments. Reseed areas following repair (Pond SR4).



**Photo 43:** Install gasket at orifice plate for watertight seal. Water was observed entering outlet structure from bottom of orifice plate (Pond SR4).



**Photo 44:** Remove tree adjacent to trickle channel on west side of EDB (Pond SR4).



**Subdivision/Business:** Falcon Marketplace

For sites with PCM(s), please complete and return as much of this table as possible for the PCM(s):

<u>Contact Info</u>	<u>Owner</u>	<u>Responsible Maintenance Entity</u> (if different from Owner)
Company/Business Name:		
Entity Type: (HOA, Metro District, Trust, Individual, Contractor, Business, etc)		
Mailing Address:		
Primary Contact Name(s):		
Primary Phone Number:		
Primary Email Address:		
Additional Email Addresses to Add to Distribution List:		
Additional Information / Comments:		