

CONSTRUCTION DOCUMENTS
FALCON MARKETPLACE
SE 1/4 OF THE SE 1/4 OF SECTION 1, T13S, R65W OF THE 6TH P.M.
11680 E. WOODMEN ROAD
FALCON, COLORADO

AGENCY CONTACTS

COUNTY	EL PASO COUNTY PLANNING & COMMUNITY DEVELOPMENT KARI PARSONS, PROJECT MANAGER/PLANNER II 2880 INTERNATIONAL CIRCLE, SUITE 110 COLORADO SPRINGS, CO 80910 (719) 520-6300
FIRE	FALCON FIRE DEPARTMENT TRENT HARWIG, FIRE CHIEF 7030 OLD MERIDIAN ROAD FALCON, CO 80831 (719)495-4050
WATER	WOODMEN HILLS METROPOLITAN DISTRICT JERRY JACOBSEN, DIRECTOR OF WATER & WASTEWATER 8046 EASTONVILLE ROAD FALCON, CO 80831 (719) 495-2500
WASTEWATER	WOODMEN HILLS METROPOLITAN DISTRICT GENE COZZOLINO, DIRECTOR OF WATER & WASTEWATER 8046 EASTONVILLE ROAD FALCON, CO 8083 (719) 495-2500
ELECTRIC	MOUNTAIN VIEW ELECTRIC ASSOCIATION LES ULFERS 11140 E. WOODMEN ROAD FALCON, CO 80831 (719) 495-2283
GAS	COLORADO SPRINGS UTILITIES TODD STURTEVANT 1521 HANCOCK EXPRESSWAY COLORADO SPRINGS, CO 80947 (719) 668-3556
TELEPHONE	CENTURY LINK SALLY KLEIN (719) 636-4329 (LOCATORS) (719) 597-8418 AT&T (LOCATORS) (719) 635-3674
CABLE	COMCAST DALE STEWART 213 N. UNION BLVD COLORADO SPRINGS, CO 80909 (719) 442-4733
PETROLEUM	NUSTAR CHAD RENSLow 7810 DRENNAN ROAD COLORADO SPRINGS, CO 80925 (719) 391-0942
OTHER	WOODMEN ROAD METROPOLITAN DISTRICT TERRY SCHOOLER 20 BOULDER CRESCENT, SUITE #200 COLORADO SPRINGS, CO 80903 (719) 447-1777



VICINITY MAP
NOT TO SCALE



BENCHMARK

ELEVATIONS ARE BASED ON COLORADO SPRINGS UTILITIES FACILITIES INFORMATION SYSTEM (FIMS) "BLT 167", A 2" ALUMINUM CAP IN CONCRETE LOCATED ON AN ELECTRIC TRANSFORMER PAD AT THE SOUTHEAST CORNER OF WOODMEN ROAD AND MERIDIAN ROAD, WITH AN ELEVATION OF 6873.18 (NGVD 29).

LEGAL DESCRIPTION

THE SOUTHEAST QUARTER OF THE SOUTHEAST QUARTER OF SECTION 1, TOWNSHIP 13 SOUTH, RANGE 65 WEST OF THE SIXTH PRINCIPAL MERIDIAN, TOGETHER WITH THAT PORTION OF BLOCK 1, TOWN OF FALCON, LYING WITHIN THE SOUTHEAST QUARTER OF THE SOUTHEAST QUARTER OF SECTION 1, TOWNSHIP 13 SOUTH, RANGE 65 WEST OF THE SIXTH PRINCIPAL MERIDIAN, COUNTY OF EL PASO, STATE OF COLORADO.

EXCEPT THOSE PORTIONS CONVEYED TO WOODMEN ROAD METROPOLITAN DISTRICT BY WARRANTY DEED RECORDED APRIL 19, 2004 AT RECEPTION NO. 204062427 AND PERSONAL REPRESENTATIVE'S DEED RECORDED SEPTEMBER 7, 2007 AT RECEPTION NO. 207116129, EL PASO COUNTY, COLORADO RECORDS.

FLOODPLAIN STATEMENT

THE EFFECTIVE FLOODPLAIN ZONE A LIMITS ARE DEFINED ON THE FIRM FOR EL PASO COUNTY, COLORADO AND UNINCORPORATED AREAS, MAP NUMBER 08041C0553G, EFFECTIVE DATE DECEMBER 7, 2018.

A CLOMR TO MODIFY THE FLOODPLAIN HAS BEEN SUBMITTED AND APPROVED BY FEMA, CASE NO. 17-08-0074R (MAY 26, 2017).

TIMING

ANTICIPATED STARTING AND COMPLETION TIME PERIOD OF SITE GRADING:SUMMER 2019-SUMMER 2020

AREAS

TOTAL AREA OF THE SITE TO BE CLEARED, EXCAVATED OR GRADED:APPROXIMATELY 36.4 ACRES

RECEIVING WATERS

FALCON WATERSHED - UNNAMED TRIBUTARY TO UPPER BLACK SQUIRREL CREEK

SOILS

HYDROLOGIC TYPE A: BLAKELAND LOAMY SAND (NO. 8) AND BLAKELAND-FLUVAQUENTIC HAPLAQUOLIS (NO. 9)

SHEET INDEX

COVER & NOTES

1	C1.10	COVER SHEET
2	C1.11	NOTES
3	C1.12	STANDARD DETAILS
4	C1.13	STANDARD DETAILS
5	C1.14	DEMOLITION/UTILITY RELOCATION PLAN
6	C1.15	PROPOSED UTILITY PLAN
7	C1.16	SURVEY CONTROL

GRADING & EROSION CONTROL

8	C2.10	FINAL GRADING & EROSION CONTROL PLANS
9	C2.11	FINAL GRADING & EROSION CONTROL PLANS
10	C2.12	GRADING & EROSION CONTROL DETAILS

FALCON MARKET PLACE ROADWAY PLANS

11	C3.10	FALCON MARKET PLACE PLAN & PROFILE
12	C3.11	FALCON MARKET PLACE PLAN & PROFILE
13	C3.12	FALCON MARKET PLACE PLAN & PROFILE
14	C3.13	SITE CONCRETE PLAN
15	C3.14	SIGNAGE & STRIPING

FALCON MARKET PLACE ROUNDABOUT PLANS

16	C4.10	SOUTHWEST ROUNDABOUT
17	C4.11	SOUTHWEST ROUNDABOUT
18	C4.12	SOUTHWEST ROUNDABOUT
19	C4.13	NORTHEAST ROUNDABOUT
20	C4.14	SW ROUNDABOUT SIGNAGE & STRIPING
21	C4.15	NE ROUNDABOUT SIGNAGE & STRIPING

LANDSCAPE PLANS

22	LP-01	LANDSCAPE PLAN
23	LP-02	LANDSCAPE PLAN
24	LP-03	LANDSCAPE PLAN
25	LP-04	LANDSCAPE PLAN
26	E1.1	ROUNDABOUT LANDSCAPE ELEVATIONS

OFFSITE WIDENING PLANS

27	C5.10	MERIDIAN ROAD TURN LANE EXTENSION
28	C5.11	MERIDIAN ROAD PLAN & PROFILE
29	C5.12	MERIDIAN ROAD PLAN & PROFILE
30	C5.13	MERIDIAN ROAD PLAN & PROFILE
31	C5.14	MERIDIAN ROAD MEDIAN PLAN & PROFILE
32	C5.15	MERIDIAN ROAD SIGNAGE & STRIPING
33	C5.16	MERIDIAN/EASTONVILLE SIGNAGE & STRIPING
34	C5.17	EASTONVILLE ROAD TURN LANE EXTENSION
35	C5.18	GUARDRAIL PLANS
36	C5.19	GUARDRAIL DETAILS

EASTONVILLE TRAFFIC SIGNAL

37	C6.10	SIGNAL PLAN
38	C6.11	SIGNAL PLAN
39	C6.12	SIGNAL PLAN

STORM SEWER PLANS


40	C7.10	STORM PLAN & PROFILE
41	C7.11	STORM PLAN & PROFILE
42	C7.12	STORM PLAN & PROFILE
43	C7.13	STORM PLAN & PROFILE
44	C7.14	STORM PLAN & PROFILE
45	C7.15	POND #2 PLAN & DETAILS
46	C7.16	POND #2 DETAILS
47	C7.17	POND #3 PLAN & DETAILS
48	C7.18	STORM SEWER DETAILS

NOTE

IN ACCORDANCE WITH EOM SECTION 1.12, THESE CONSTRUCTION DOCUMENTS WILL BE VALID FOR CONSTRUCTION FOR A PERIOD OF 2 YEARS FROM THE DATE SIGNED BY THE EL PASO COUNTY ENGINEER. IF CONSTRUCTION HAS NOT STARTED WITHIN THOSE 2 YEARS, THE PLANS WILL NEED TO BE RESUBMITTED FOR APPROVAL, INCLUDING PAYMENT OF REVIEW FEES AT THE PLANNING AND COMMUNITY DEVELOPMENT DIRECTOR'S DISCRETION.

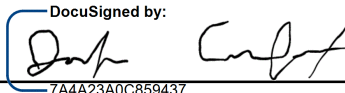
DESIGN ENGINEER'S STATEMENT

THESE DETAILED PLANS AND SPECIFICATIONS WERE PREPARED UNDER MY DIRECTION AND SUPERVISION. SAID PLANS AND SPECIFICATIONS HAVE BEEN PREPARED ACCORDING TO CRITERIA ESTABLISHED BY THE COUNTY FOR THE DETAILED ROADWAY, DRAINAGE, GRADING AND EROSION CONTROL PLANS AND SPECIFICATIONS, AND SAID PLANS AND SPECIFICATIONS ARE IN CONFORMITY WITH APPLICABLE MASTER DRAINAGE PLANS AND MASTER TRANSPORTATION PLANS. SAID PLANS AND SPECIFICATIONS MEET THE PURPOSES FOR WHICH THE PARTICULAR ROADWAY AND DRAINAGE FACILITIES ARE DESIGNED AND ARE CORRECT TO THE BEST OF MY KNOWLEDGE AND BELIEF. I ACCEPT RESPONSIBILITY FOR ANY LIABILITY CAUSED BY ANY NEGLIGENT ACTS, ERRORS OR OMISSIONS ON MY PART IN PREPARATION OF THESE DETAILED PLANS AND SPECIFICATIONS.

 8-28-2020
TIM D. MCCONNELL DATE
P.E.# 33797

OWNER'S STATEMENT

I, THE OWNER/DEVELOPER HAVE READ AND WILL COMPLY WITH THE REQUIREMENTS OF THE GRADING AND EROSION CONTROL PLAN AND ALL OF THE REQUIREMENTS SPECIFIED IN THESE DETAILED PLANS AND SPECIFICATIONS.

DocuSigned by:  8/31/2020
JOSH CANAFAX DATE

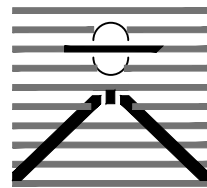
EL PASO COUNTY

COUNTY PLAN REVIEW IS PROVIDED ONLY FOR GENERAL CONFORMANCE WITH COUNTY DESIGN CRITERIA. THE COUNTY IS NOT RESPONSIBLE FOR THE ACCURACY AND ADEQUACY OF THE DESIGN, DIMENSIONS, AND/OR ELEVATIONS WHICH SHALL BE CONFIRMED AT THE JOB SITE. THE COUNTY THROUGH THE APPROVAL OF THIS DOCUMENT ASSUMES NO RESPONSIBILITY FOR THE COMPLETENESS AND/OR ACCURACY OF THIS DOCUMENT.

FILED IN ACCORDANCE WITH THE REQUIREMENTS OF THE EL PASO COUNTY LAND DEVELOPMENT CODE, DRAINAGE CRITERIA MANUAL, AND ENGINEERING CRITERIA MANUAL AS AMENDED.

JENNIFER IRVINE, P.E. DATE
COUNTY ENGINEER

PREPARED BY:



DREXEL, BARRELL & CO.
Engineers • Surveyors
3 SOUTH 7TH STREET
COLORADO SPGS, COLORADO 80905
CONTACT: TIM D. MCCONNELL, P.E.
(719)260-0887
BOULDER • COLORADO SPRINGS


CLIENT:

LG HI FALCON, LLC
3953 MAPLE AVE., #290
DALLAS, TEXAS 75219
(214) 416-9820

CONSTRUCTION DRAWINGS FOR

FALCON
MARKETPLACE
FALCON, COLORADO

ISSUE	DATE
90% SUBMITTAL	5-6-19
REVISED	8-28-20
DESIGNED BY:	TDM
DRAWN BY:	KGv
CHECKED BY:	TDM
FILE NAME:	20988-CD-CVR


PREPARED UNDER MY DIRECT SUPERVISION FOR AND ON BEHALF OF DREXEL, BARRELL & CO.
DRAWING SCALE:
HORIZONTAL: N/A
VERTICAL: N/A

COVER SHEET

PROJECT NO. 20988-00CSCV
DRAWING NO.

C1.10

SHEET: 1 OF 48

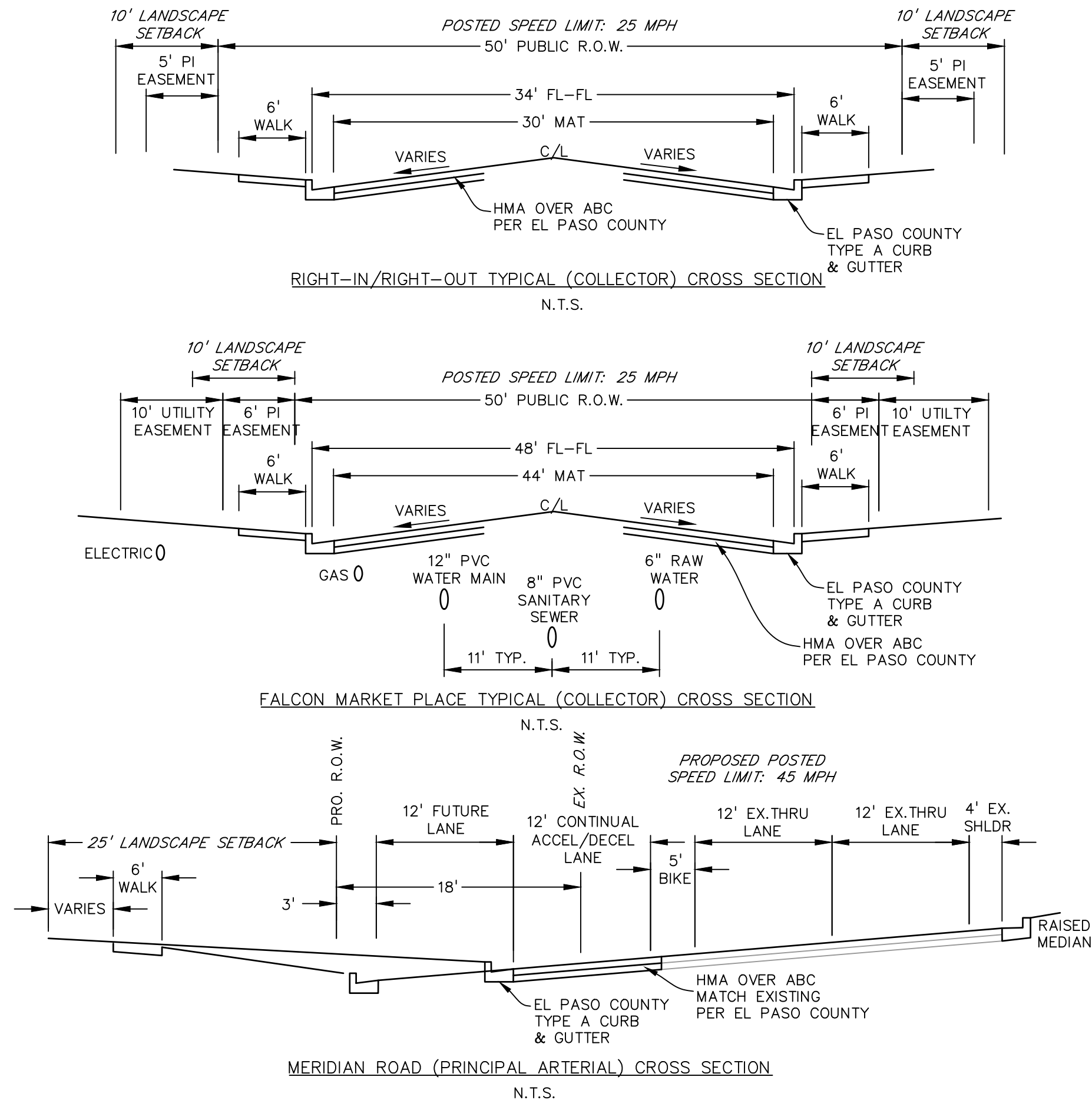
STANDARD NOTES FOR EL PASO COUNTY GRADING AND EROSION CONTROL PLANS

1. STORMWATER DISCHARGES FROM CONSTRUCTION SITES SHALL NOT CAUSE OR THREATEN TO CAUSE POLLUTION, CONTAMINATION, OR DEGRADATION OF STATE WATERS. ALL WORK AND EARTH DISTURBANCE SHALL BE DONE IN A MANNER THAT MINIMIZES POLLUTION OF ANY ON-SITE OR OFF-SITE WATERS, INCLUDING WETLANDS.
2. NOTWITHSTANDING ANYTHING DEPICTED IN THESE PLANS IN WORDS OR GRAPHIC REPRESENTATION, ALL DESIGN AND CONSTRUCTION RELATED TO ROADS, STORM DRAINAGE AND EROSION CONTROL SHALL CONFORM TO THE STANDARDS AND REQUIREMENTS OF THE MOST RECENT VERSION OF THE RELEVANT ADOPTED EL PASO COUNTY STANDARDS, INCLUDING THE LAND DEVELOPMENT CODE, THE ENGINEERING CRITERIA MANUAL, AND THE DRAINAGE CRITERIA MANUAL VOLUME 2. ANY DEVIATIONS FROM REGULATIONS AND STANDARDS MUST BE REQUESTED, AND APPROVED, IN WRITING.
3. A SEPARATE STORMWATER MANAGEMENT PLAN (SMWP) FOR THIS PROJECT SHALL BE COMPLETED AND AN EROSION AND STORMWATER QUALITY CONTROL PERMIT (ESQCP) ISSUED PRIOR TO COMMENCING CONSTRUCTION. MANAGEMENT OF THE SMWP DURING CONSTRUCTION IS THE RESPONSIBILITY OF THE DESIGNATED QUALIFIED STORMWATER MANAGER OR CERTIFIED EROSION CONTROL INSPECTOR. THE SMWP SHALL BE LOCATED ON SITE AT ALL TIMES DURING CONSTRUCTION AND SHALL BE KEPT UP TO DATE WITH WORK PROGRESS AND CHANGES IN THE FIELD.
4. ONCE THE ESQCP IS APPROVED AND A 'NOTICE TO PROCEED' HAS BEEN ISSUED, THE CONTRACTOR MAY INSTALL THE INITIAL STAGE EROSION AND SEDIMENT CONTROL MEASURES AS INDICATED ON THE APPROVED GEC. A PRECONSTRUCTION MEETING BETWEEN THE CONTRACTOR, ENGINEER, AND EL PASO COUNTY WILL BE HELD PRIOR TO ANY CONSTRUCTION. IT IS THE RESPONSIBILITY OF THE APPLICANT TO COORDINATE THE MEETING TIME AND PLACE WITH COUNTY STAFF.
5. CONTROL MEASURES MUST BE INSTALLED PRIOR TO COMMENCEMENT OF ACTIVITIES THAT COULD CONTRIBUTE POLLUTANTS TO STORMWATER. CONTROL MEASURES FOR ALL SLOPES, CHANNELS, DITCHES, AND DISTURBED LAND AREAS SHALL BE INSTALLED IMMEDIATELY UPON COMPLETION OF THE DISTURBANCE.
6. ALL TEMPORARY SEDIMENT AND EROSION CONTROL MEASURES SHALL BE MAINTAINED AND REMAIN IN EFFECTIVE OPERATING CONDITION UNTIL PERMANENT SOIL EROSION CONTROL MEASURES ARE IMPLEMENTED AND FINAL STABILIZATION IS ESTABLISHED. ALL PERSONS ENGAGED IN LAND DISTURBANCE ACTIVITIES SHALL ASSESS THE ADEQUACY OF CONTROL MEASURES AT THE SITE AND IDENTIFY IF CHANGES TO THOSE CONTROL MEASURES ARE NEEDED TO ENSURE THE CONTINUED EFFECTIVE PERFORMANCE OF THE CONTROL MEASURES. ALL CHANGES TO TEMPORARY SEDIMENT AND EROSION CONTROL MEASURES MUST BE INCORPORATED INTO THE STORMWATER MANAGEMENT PLAN.
7. TEMPORARY STABILIZATION SHALL BE IMPLEMENTED ON DISTURBED AREAS AND STOCKPILES WHERE GROUND DISTURBING CONSTRUCTION ACTIVITY HAS PERMANENTLY CEASED OR TEMPORARILY CEASED FOR LONGER THAN 14 DAYS.
8. FINAL STABILIZATION MUST BE IMPLEMENTED AT ALL APPLICABLE CONSTRUCTION SITES. FINAL STABILIZATION IS ACHIEVED WHEN ALL GROUND DISTURBING ACTIVITIES ARE COMPLETE AND ALL DISTURBED AREAS EITHER HAVE A UNIFORM VEGETATIVE COVER WITH INDIVIDUAL PLANT DENSITY OF 70 PERCENT OF PRE-DISTURBANCE LEVELS ESTABLISHED OR EQUIVALENT PERMANENT ALTERNATIVE STABILIZATION METHOD IS IMPLEMENTED. ALL TEMPORARY SEDIMENT AND EROSION CONTROL MEASURES SHALL BE REMOVED UPON FINAL STABILIZATION AND BEFORE PERMIT CLOSURE.
9. ALL PERMANENT STORMWATER MANAGEMENT FACILITIES SHALL BE INSTALLED AS DESIGNED IN THE APPROVED PLANS. ANY PROPOSED CHANGES THAT AFFECT THE DESIGN OR FUNCTION OF PERMANENT STORMWATER MANAGEMENT STRUCTURES MUST BE APPROVED BY THE EGM ADMINISTRATOR PRIOR TO IMPLEMENTATION.
10. EARTH DISTURBANCES SHALL BE CONDUCTED IN SUCH A MANNER SO AS TO EFFECTIVELY MINIMIZE ACCELERATED SOIL EROSION AND RESULTING SEDIMENTATION. ALL DISTURBANCES SHALL BE DESIGNED, CONSTRUCTED, AND COMPLETED SO THAT THE EXPOSED AREA OF ANY DISTURBED LAND SHALL BE LIMITED TO THE SHORTEST PRACTICAL PERIOD OF TIME. PRE-EXISTING VEGETATION SHALL BE PROTECTED AND MAINTAINED WITHIN 50 HORIZONTAL FEET OF A WATERS OF THE STATE UNLESS SHOWN TO BE INFEASIBLE AND SPECIFICALLY REQUESTED AND APPROVED.
11. COMPACTION OF SOIL MUST BE PREVENTED IN AREAS DESIGNATED FOR INFILTRATION CONTROL MEASURES OR WHERE FINAL STABILIZATION WILL BE ACHIEVED BY VEGETATIVE COVER. AREAS DESIGNATED FOR INFILTRATION CONTROL MEASURES SHALL ALSO BE PROTECTED FROM SEDIMENTATION DURING CONSTRUCTION UNTIL FINAL STABILIZATION IS ACHIEVED. IF COMPACTION PREVENTION IS NOT FEASIBLE DUE TO SITE CONSTRAINTS, ALL AREAS DESIGNATED FOR INFILTRATION AND VEGETATION CONTROL MEASURES MUST BE LOOSENEED PRIOR TO INSTALLATION OF THE CONTROL MEASURE(S).
12. ANY TEMPORARY OR PERMANENT FACILITY DESIGNED AND CONSTRUCTED FOR THE CONVEYANCE OF STORMWATER AROUND, THROUGH, OR FROM THE EARTH DISTURBANCE AREA SHALL BE A STABILIZED CONVEYANCE DESIGNED TO MINIMIZE EROSION AND THE DISCHARGE OF SEDIMENT OFF SITE.
13. CONCRETE WASH WATER SHALL BE CONTAINED AND DISPOSED OF IN ACCORDANCE WITH THE SMWP. NO WASH WATER SHALL BE DISCHARGED TO OR ALLOWED TO ENTER STATE WATERS, INCLUDING ANY SURFACE OR SUBSURFACE STORM DRAINAGE SYSTEM OR FACILITIES. CONCRETE WASHOUTS SHALL NOT BE LOCATED IN AN AREA WHERE SHALLOW GROUNDWATER MAY BE PRESENT, OR WITHIN 50 FEET OF A SURFACE WATER BODY, CREEK OR STREAM.
14. DURING DEWATERING OPERATIONS OF UNCONTAMINATED GROUND WATER MAY BE DISCHARGED ON SITE, BUT SHALL NOT LEAVE THE SITE IN THE FORM OF SURFACE RUNOFF UNLESS AN APPROVED STATE DEWATERING PERMIT IS IN PLACE.
15. EROSION CONTROL BLANKETING OR OTHER PROTECTIVE COVERING SHALL BE USED ON SLOPES STEEPER THAN 3:1.
16. CONTRACTOR SHALL BE RESPONSIBLE FOR THE REMOVAL OF ALL WASTES FROM THE CONSTRUCTION SITE FOR DISPOSAL IN ACCORDANCE WITH LOCAL AND STATE REGULATORY REQUIREMENTS. NO CONSTRUCTION DEBRIS, TREE SLASH, BUILDING MATERIAL WASTES OR UNUSED BUILDING MATERIALS SHALL BE BURIED, DUMPED, OR DISCHARGED AT THE SITE.
17. WASTE MATERIALS SHALL NOT BE TEMPORARILY PLACED OR STORED IN THE STREET, ALLEY, OR OTHER PUBLIC WAY, UNLESS IN ACCORDANCE WITH AN APPROVED TRAFFIC CONTROL PLAN. CONTROL MEASURES MAY BE REQUIRED BY EL PASO COUNTY ENGINEERING IF DEEMED NECESSARY, BASED ON SPECIFIC CONDITIONS AND CIRCUMSTANCES.
18. TRACKING OF SOILS AND CONSTRUCTION DEBRIS OFF-SITE SHALL BE MINIMIZED. MATERIALS TRACKED OFF-SITE SHALL BE CLEANED UP AND PROPERLY DISPOSED OF IMMEDIATELY.
19. THE OWNER/DEVELOPER SHALL BE RESPONSIBLE FOR THE REMOVAL OF ALL CONSTRUCTION DEBRIS, DIRT, TRASH, ROCK, SEDIMENT, SOIL, AND SAND THAT MAY ACCUMULATE IN ROADS, STORM DRAINS AND OTHER DRAINAGE CONVEYANCE SYSTEMS AND STORMWATER APPURTENANCES AS A RESULT OF SITE DEVELOPMENT.
20. THE QUANTITY OF MATERIALS STORED ON THE PROJECT SITE SHALL BE LIMITED, AS MUCH AS PRACTICAL, TO THAT QUANTITY REQUIRED TO PERFORM THE WORK IN AN ORDERLY SEQUENCE. ALL MATERIALS STORED ON-SITE SHALL BE STORED IN A NEAT, ORDERLY MANNER, IN THEIR ORIGINAL CONTAINERS, WITH ORIGINAL MANUFACTURER'S LABELS.
21. NO CHEMICAL(S) HAVING THE POTENTIAL TO BE RELEASED IN STORMWATER ARE TO BE STORED OR USED ONSITE UNLESS PERMISSION FOR THE USE OF SUCH CHEMICAL(S) IS GRANTED IN WRITING BY THE EGM ADMINISTRATOR. IN GRANTING APPROVAL FOR THE USE OF SUCH CHEMICAL(S), SPECIAL CONDITIONS AND MONITORING MAY BE REQUIRED.
22. BULK STORAGE OF ALLOWED PETROLEUM PRODUCTS OR OTHER ALLOWED LIQUID CHEMICALS IN EXCESS OF 55 GALLONS SHALL REQUIRE ADEQUATE SECONDARY CONTAINMENT PROTECTION TO CONTAIN ALL SPILLS ONSITE AND TO PREVENT ANY SPILLED MATERIALS FROM ENTERING STATE WATERS, ANY SURFACE OR SUBSURFACE STORM DRAINAGE SYSTEM OR OTHER FACILITIES.
23. NO PERSON SHALL CAUSE THE IMPEDIMENT OF STORMWATER FLOW IN THE CURB AND GUTTER OR DITCH EXCEPT WITH APPROVED SEDIMENT CONTROL MEASURES.
24. OWNER/DEVELOPER AND THEIR AGENTS SHALL COMPLY WITH THE 'COLORADO WATER QUALITY CONTROL ACT' (TITLE 25, ARTICLE 8, CRS), AND THE 'CLEAN WATER ACT' (33 USC 1344), IN ADDITION TO THE REQUIREMENTS OF THE LAND DEVELOPMENT CODE, DCM VOLUME II AND THE EGM APPENDIX I. ALL APPROPRIATE PERMITS MUST BE OBTAINED BY THE CONTRACTOR PRIOR TO CONSTRUCTION (1041, NPDES, FLOODPLAIN, 404, FUGITIVE DUST, ETC.). IN THE EVENT OF CONFLICTS BETWEEN THESE REQUIREMENTS AND OTHER LAWS, RULES, OR REGULATIONS OF OTHER FEDERAL, STATE, LOCAL, OR COUNTY AGENCIES, THE MOST RESTRICTIVE LAWS, RULES, OR REGULATIONS SHALL APPLY.
25. ALL CONSTRUCTION TRAFFIC MUST ENTER/EXIT THE SITE ONLY AT APPROVED CONSTRUCTION ACCESS POINTS.
26. PRIOR TO CONSTRUCTION THE PERMITTEE SHALL VERIFY THE LOCATION OF EXISTING UTILITIES.
27. A WATER SOURCE SHALL BE AVAILABLE ON SITE DURING EARTHWORK OPERATIONS AND SHALL BE UTILIZED AS REQUIRED TO MINIMIZE DUST FROM EARTHWORK EQUIPMENT AND WIND.
28. THE SOILS REPORT FOR THIS SITE HAS BEEN PREPARED BY GROUND ENGINEERING, DATED AUGUST 25, 2015, WITH ADDENDA #1, DATED MARCH 17, 2017, AND SHALL BE CONSIDERED A PART OF THESE PLANS.
29. AT LEAST TEN (10) DAYS PRIOR TO THE ANTICIPATED START OF CONSTRUCTION, FOR PROJECTS THAT WILL DISTURB ONE (1) ACRE OR MORE, THE OWNER OR OPERATOR OF CONSTRUCTION ACTIVITY SHALL SUBMIT A PERMIT APPLICATION FOR STORMWATER DISCHARGE TO THE COLORADO DEPARTMENT OF PUBLIC HEALTH AND ENVIRONMENT, WATER QUALITY DIVISION. THE APPLICATION CONTAINS CERTIFICATION OF COMPLETION OF A STORMWATER MANAGEMENT PLAN (SMWP), OF WHICH THIS GRADING AND EROSION CONTROL PLAN MAY BE A PART. FOR INFORMATION OR APPLICATION MATERIALS CONTACT:

COLORADO DEPARTMENT OF PUBLIC HEALTH AND ENVIRONMENT
WATER QUALITY CONTROL DIVISION
WQCD - PERMITS
4300 CHERRY CREEK DRIVE SOUTH
DENVER, CO 80246-1530
ATTN: PERMITS UNIT

STANDARD NOTES FOR EL PASO COUNTY CONSTRUCTION PLANS

1. ALL DRAINAGE AND ROADWAY CONSTRUCTION SHALL MEET THE STANDARDS AND SPECIFICATIONS OF THE CITY OF COLORADO SPRINGS/EL PASO COUNTY DRAINAGE CRITERIA MANUAL, VOLUMES 1 AND 2, AND THE EL PASO COUNTY ENGINEERING CRITERIA MANUAL.
2. CONTRACTOR SHALL BE RESPONSIBLE FOR THE NOTIFICATION AND FIELD NOTIFICATION OF ALL EXISTING UTILITIES, WHETHER SHOWN ON THE PLANS OR NOT, BEFORE BEGINNING CONSTRUCTION. LOCATION OF EXISTING UTILITIES SHALL BE VERIFIED BY THE CONTRACTOR PRIOR TO CONSTRUCTION. CALL 811 TO CONTACT THE UTILITY NOTIFICATION CENTER OF COLORADO (UNCC).
3. CONTRACTOR SHALL KEEP A COPY OF THESE APPROVED PLANS, THE GRADING AND EROSION CONTROL PLAN, THE STORMWATER MANAGEMENT PLAN (SMWP), THE SOILS AND GEOTECHNICAL REPORT, AND THE APPROPRIATE DESIGN AND CONSTRUCTION STANDARDS AND SPECIFICATIONS AT THE JOB SITE AT ALL TIMES, INCLUDING THE FOLLOWING:
a. EL PASO COUNTY ENGINEERING CRITERIA MANUAL (ECM)
b. CITY OF COLORADO SPRINGS/EL PASO COUNTY DRAINAGE CRITERIA MANUAL, VOLUMES 1 AND 2
c. COLORADO DEPARTMENT OF TRANSPORTATION (CDOT) STANDARD SPECIFICATIONS FOR ROAD AND BRIDGE CONSTRUCTION
d. CDOT M & S STANDARDS
4. NOTWITHSTANDING ANYTHING DEPICTED IN THESE PLANS IN WORDS OR GRAPHIC REPRESENTATION, ALL DESIGN AND CONSTRUCTION RELATED TO ROADS, STORM DRAINAGE AND EROSION CONTROL SHALL CONFORM TO THE STANDARDS AND REQUIREMENTS OF THE MOST RECENT VERSION OF THE RELEVANT ADOPTED EL PASO COUNTY STANDARDS, INCLUDING THE LAND DEVELOPMENT CODE, THE ENGINEERING CRITERIA MANUAL, THE DRAINAGE CRITERIA MANUAL, AND THE DRAINAGE CRITERIA MANUAL VOLUME 2. ANY DEVIATIONS FROM REGULATIONS AND STANDARDS MUST BE REQUESTED, AND APPROVED, IN WRITING. ANY MODIFICATIONS NECESSARY TO MEET CRITERIA AFTER-THE-FACT WILL BE ENTIRELY THE DEVELOPER'S RESPONSIBILITY TO RECTIFY.
5. IT IS THE DESIGN ENGINEER'S RESPONSIBILITY TO ACCURATELY SHOW EXISTING CONDITIONS, BOTH ONSITE AND OFFSITE, ON THE CONSTRUCTION PLANS. ANY MODIFICATIONS NECESSARY DUE TO CONFLICTS, OMISSIONS, OR CHANGED CONDITIONS WILL BE ENTIRELY THE DEVELOPER'S RESPONSIBILITY TO RECTIFY.
6. CONTRACTOR SHALL SCHEDULE A PRE-CONSTRUCTION MEETING WITH EL PASO COUNTY PLANNING AND COMMUNITY DEVELOPMENT (PCD) - INSPECTIONS, PRIOR TO STARTING CONSTRUCTION.
7. IT IS THE CONTRACTOR'S RESPONSIBILITY TO UNDERSTAND THE REQUIREMENTS OF ALL JURISDICTIONAL AGENCIES AND TO OBTAIN ALL REQUIRED PERMITS, INCLUDING BUT NOT LIMITED TO EL PASO COUNTY EROSION AND STORMWATER QUALITY CONTROL PERMIT (ESQCP), REGIONAL BUILDING FLOODPLAIN DEVELOPMENT PERMIT, U.S. ARMY CORPS OF ENGINEERS-ISSUED 401 AND/OR 404 PERMITS, AND COUNTY AND STATE FUGITIVE DUST PERMITS.
8. CONTRACTOR SHALL NOT DEVIATE FROM THE PLANS WITHOUT FIRST OBTAINING WRITTEN APPROVAL FROM THE DESIGN ENGINEER AND PCD. CONTRACTOR SHALL NOTIFY THE DESIGN ENGINEER IMMEDIATELY UPON DISCOVERY OF ANY ERRORS OR INCONSISTENCIES.
9. ALL STORM DRAIN PIPE SHALL BE CLASS III RCP UNLESS OTHERWISE NOTED AND APPROVED BY PCD. WATERTIGHT JOINTS SHALL BE PROVIDED ON THE SPECIFIED PIPES.
10. CONTRACTOR SHALL COORDINATE GEOTECHNICAL TESTING PER ECM STANDARDS. PAVEMENT DESIGN SHALL BE APPROVED BY EL PASO COUNTY PCD PRIOR TO PLACEMENT OF CURB AND GUTTER AND PAVEMENT.
11. ALL CONSTRUCTION TRAFFIC MUST ENTER/EXIT THE SITE AT APPROVED CONSTRUCTION ACCESS POINTS.
12. SIGHT VISIBILITY TRIANGLES AS IDENTIFIED IN THE PLANS SHALL BE PROVIDED AT ALL INTERSECTIONS. OBSTRUCTIONS GREATER THAN 18 INCHES ABOVE FLOWLINE ARE NOT ALLOWED WITHIN SIGHT TRIANGLES.
13. SIGNING AND STRIPING SHALL COMPLY WITH EL PASO COUNTY DOT AND MUTCD CRITERIA. [IF APPLICABLE, ADDITIONAL SIGNING AND STRIPING NOTES WILL BE PROVIDED.]
14. CONTRACTOR SHALL OBTAIN ANY PERMITS REQUIRED BY EL PASO COUNTY DOT, INCLUDING WORK WITHIN THE RIGHT-OF-WAY AND SPECIAL TRANSPORT PERMITS.
15. THE LIMITS OF CONSTRUCTION SHALL REMAIN WITHIN THE PROPERTY LINE UNLESS OTHERWISE NOTED. THE OWNER/DEVELOPER SHALL OBTAIN WRITTEN PERMISSION AND EASEMENTS, WHERE REQUIRED, FROM ADJOINING PROPERTY OWNER(S) PRIOR TO ANY OFF-SITE DISTURBANCE, GRADING, OR CONSTRUCTION.



SIGNAGE AND STRIPING NOTES

SIGNING AND STRIPING NOTES:

1. ALL SIGNS AND PAVEMENT MARKINGS SHALL BE IN COMPLIANCE WITH THE CURRENT MANUAL ON UNIFORM TRAFFIC CONTROL DEVICES (MUTCD).
2. REMOVAL OF EXISTING PAVEMENT MARKINGS SHALL BE ACCOMPLISHED BY A METHOD THAT DOES NOT MATERIALLY DAMAGE THE PAVEMENT. THE PAVEMENT MARKINGS SHALL BE REMOVED TO THE EXTENT THAT THEY WILL NOT BE VISIBLE UNDER DAY OR NIGHT CONDITIONS. AT NO TIME WILL IT BE ACCEPTABLE TO PAINT OVER EXISTING PAVEMENT MARKINGS.
3. ANY DEVIATION FROM THE STRIPING AND SIGNING PLAN SHALL BE APPROVED BY EL PASO COUNTY PLANNING AND COMMUNITY DEVELOPMENT.
4. ALL SIGNS SHOWN ON THE SIGNING AND STRIPING PLAN SHALL BE NEW SIGNS. EXISTING SIGNS MAY REMAIN OR BE REUSED IF THEY MEET CURRENT EL PASO COUNTY AND MUTCD STANDARDS.
5. STREET NAME AND REGULATORY STOP SIGNS SHALL BE ON THE SAME POST AT INTERSECTIONS.
6. ALL REMOVED SIGNS SHALL BE DISPOSED OF IN A PROPER MANNER BY THE CONTRACTOR.
7. ALL STREET NAME SIGNS SHALL HAVE 'D' SERIES LETTERS, WITH LOCAL ROADWAY SIGNS BEING 4" UPPER-LOWER CASE LETTERING ON 8" BLANK AND NON-LOCAL ROADWAY SIGNS BEING 6" LETTERING, UPPER-LOWER CASE ON 12" BLANK, WITH A WHITE BORDER THAT IS NOT RECESSED. MULTI-LANE ROADWAYS WITH SPEED LIMITS OF 40 MPH OR HIGHER SHALL HAVE 8" UPPER-LOWER CASE LETTERING ON 18" BLANK WITH A WHITE BORDER THAT IS NOT RECESSED. THE WIDTH OF THE NON-RECESSED WHITE BORDERS SHALL MATCH PAGE 255 OF THE 2012 MUTCD "STANDARD HIGHWAY SIGNS".
8. ALL TRAFFIC SIGNS SHALL HAVE A MINIMUM HIGH INTENSITY PRISMATIC GRADE SHEETING.
9. ALL LOCAL RESIDENTIAL STREET SIGNS SHALL BE MOUNTED ON A 1.75" X 1.75" SQUARE TUBE SIGN POST AND STUB POST BASE. FOR OTHER APPLICATIONS, REFER TO THE CDOT STANDARD S-614-8 REGARDING USE OF THE P2 TUBULAR STEEL POST SLIPBASE DESIGN.
10. ALL SIGNS SHALL BE SINGLE SHEET ALUMINUM WITH 0.100" MINIMUM THICKNESS.
11. ALL LIMIT LINES/STOP LINES, CROSSWALK LINES, PAVEMENT LEGENDS, AND ARROWS SHALL BE A MINIMUM 125 MIL THICKNESS PREFORMED THERMOPLASTIC PAVEMENT MARKINGS WITH TAPERED LEADING EDGES PER CDOT STANDARD S-627-1. WORD AND SYMBOL MARKINGS SHALL BE THE NARROW TYPE. STOP BARS SHALL BE 24" IN WIDTH. CROSSWALKS LINES SHALL BE 12" WIDE AND 8' LONG PER CDOT S-627-1.
12. ALL LONGITUDINAL LINES SHALL BE A MINIMUM 15MIL THICKNESS EPOXY PAINT. ALL NON-LOCAL RESIDENTIAL ROADWAYS SHALL INCLUDE BOTH RIGHT AND LEFT EDGE LINE STRIPING AND ANY ADDITIONAL STRIPING AS REQUIRED BY CDOT S-627-1.
13. THE CONTRACTOR SHALL NOTIFY EL PASO COUNTY PLANNING AND COMMUNITY DEVELOPMENT (719) 520-6819 PRIOR TO AND UPON COMPLETION OF SIGNING AND STRIPING.
14. THE CONTRACTOR SHALL OBTAIN A WORK IN THE RIGHT OF WAY PERMIT FROM THE EL PASO COUNTY DEPARTMENT OF PUBLIC WORKS (DPW) PRIOR TO ANY SIGNAGE OR STRIPING WORK WITHIN AN EXISTING EL PASO COUNTY ROADWAY.

PREPARED BY:

DREXEL, BARRELL & CO.
Engineers • Surveyors
3 SOUTH 7TH STREET
COLORADO SPGS, COLORADO 80905
CONTACT: TIM D. McCONNELL, P.E.
(719)260-0887
BOULDER • COLORADO SPRINGS

CLIENT:

LG HI FALCON, LLC

3953 MAPLE AVE., #290
DALLAS, TEXAS 75219
(214) 416-9820

CONSTRUCTION DRAWINGS FOR

FALCON
MARKETPLACE
FALCON, COLORADO

ISSUE	DATE
90% SUBMITTAL	5-6-19
REVISED	8-28-20
DESIGNED BY:	TDM
DRAWN BY:	GES
CHECKED BY:	TDM
FILE NAME:	20988-CD-NTS

PREPARED UNDER MY DIRECT SUPERVISION FOR AND ON BEHALF OF DREXEL, BARRELL & CO.

DRAWING SCALE:

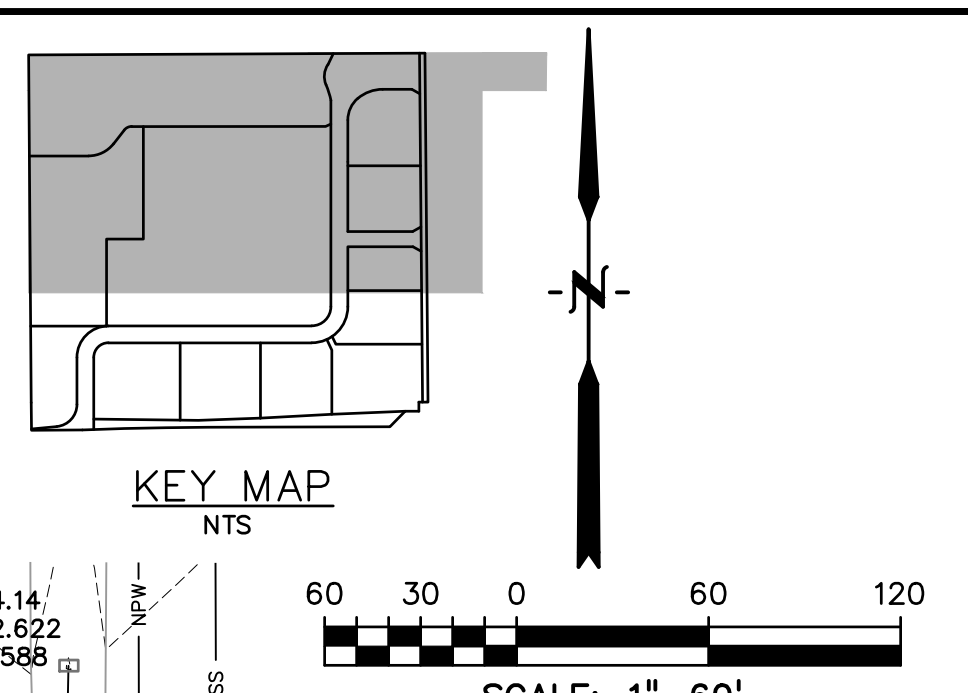
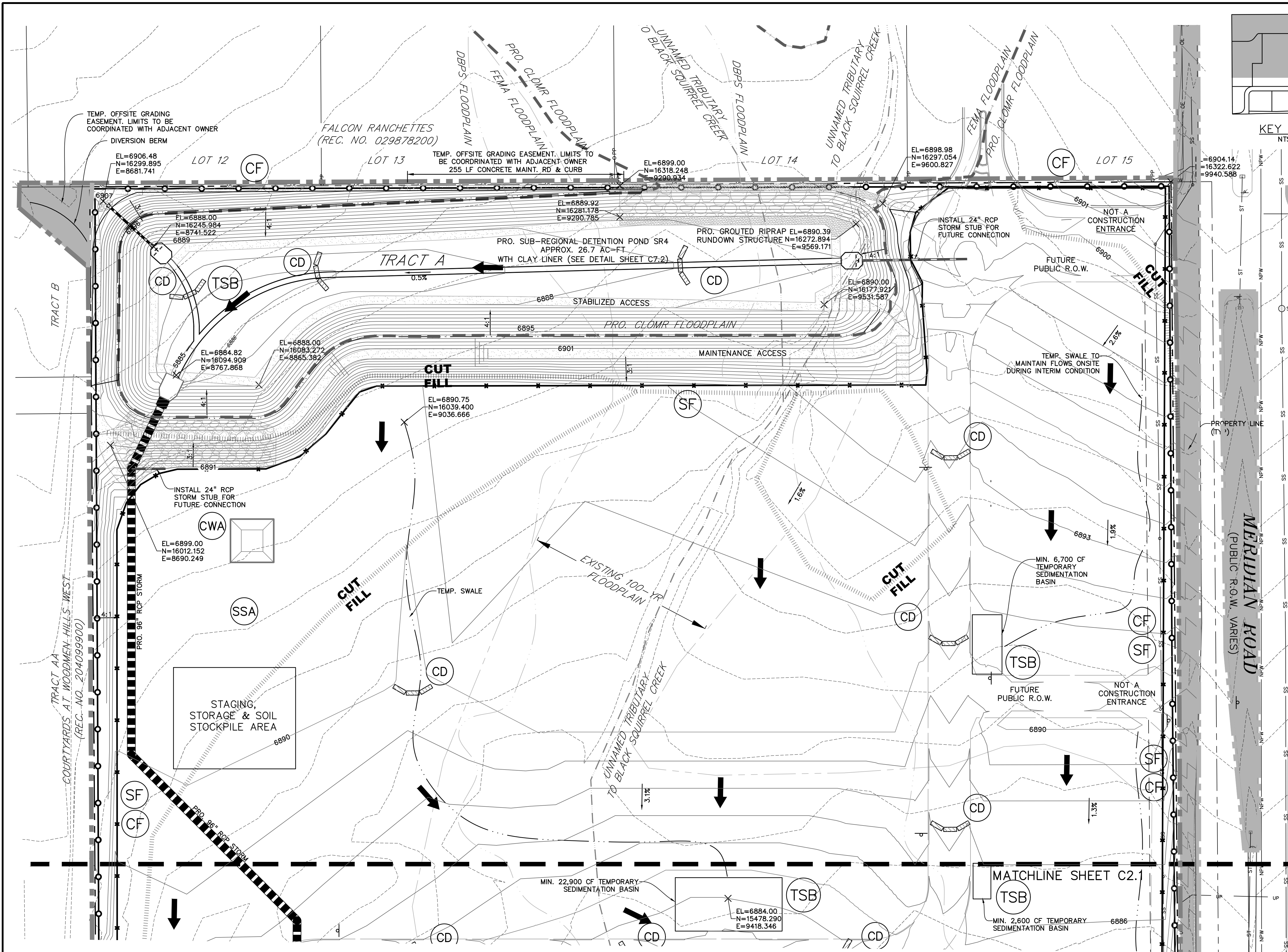
HORIZONTAL: N/A
VERTICAL: N/A

NOTES

PROJECT NO. 20988-00CSV
DRAWING NO.

C1.11

SHEET: 2 OF 48



EASTONVILLE ROAD
(80' PUBLIC R.O.W.)

LEGEND	
PROPERTY LINE	---
PROPOSED INTERMEDIATE CONTOUR	---
PROPOSED INDEX CONTOUR	6245
EX. INTERMEDIATE CONTOUR	---
EX. INDEX CONTOUR	6245
CUT FILL DELINEATION	---
LIMITS OF DISTURBANCE/CONSTRUCTION	---
PROPOSED STORM SEWER	---
PROPOSED STORM INLET	■
EX. OVERHEAD ELECTRIC	OE
EX. SANITARY SEWER	SS
EX. PETROLEUM	UP
EX. GAS	G
EX. RAW WATER	NPW
EX. WATER	W
EX. STORM SEWER	ST
TEMPORARY SWALE	---
DIRECTION OF FLOW	←
SILT FENCE SEE DETAIL 3/C4.2	SF
CONSTRUCTION FENCE	CF
VEHICLE TRACKING CONTROL SEE DETAIL 5/C4.2	VTC
STRAW BALE CHECK DAM	CD
CONCRETE WASHOUT AREA	CWA
STABILIZED STAGING AREA	SSA
TEMPORARY SEDIMENT BASIN	TSB
OFFSITE IMPROVEMENTS REF. INTERIM/FINAL GEC PLAN	---

- NOTE**
- GRADING IS NOT PERMITTED WITHIN THE COUNTY RIGHT-OF-WAY DURING THE INITIAL CONDITION, EXCEPT FOR THE OPEN CHANNEL ALONG E. WOODMEN RD.
 - EXISTING SITE IS 90% VEGETATED WITH NATURAL NATIVE GRASSES.
 - NO RETAINING WALLS ARE PROPOSED AT THE INITIAL CONDITION.

PREPARED BY:

DREXEL, BARRELL & CO.
Engineers • Surveyors
3 SOUTH 7TH STREET
COLORADO SPRINGS, COLORADO 80905
CONTACT: TIM D. McCONNELL, P.E.
(719) 260-0887
BOULDER • COLORADO SPRINGS

CLIENT:

HUMMEL INVESTMENTS, LLC
8117 PRESTON ROAD, SUITE 120
DALLAS, TEXAS 75225
(214) 416-9820

OVERLOT GRADING, POND SR4 & UTILITY
CONSTRUCTION DRAWINGS FOR

**FALCON
MARKETPLACE**
FALCON, COLORADO

ISSUE	DATE
1ST SUBMITTAL	6-20-17
RESUBMITTAL	9-6-18
REVISED	7-24-20

DESIGNED BY:	TDM
DRAWN BY:	KGW
CHECKED BY:	TDM
FILE NAME:	

COLORADO REGISTERED
PROFESSIONAL ENGINEER
TIM D. McCONNELL
33797
2-13-20

PREPARED UNDER MY DIRECT
SUPERVISION FOR AND ON BEHALF
OF DREXEL, BARRELL & CO.

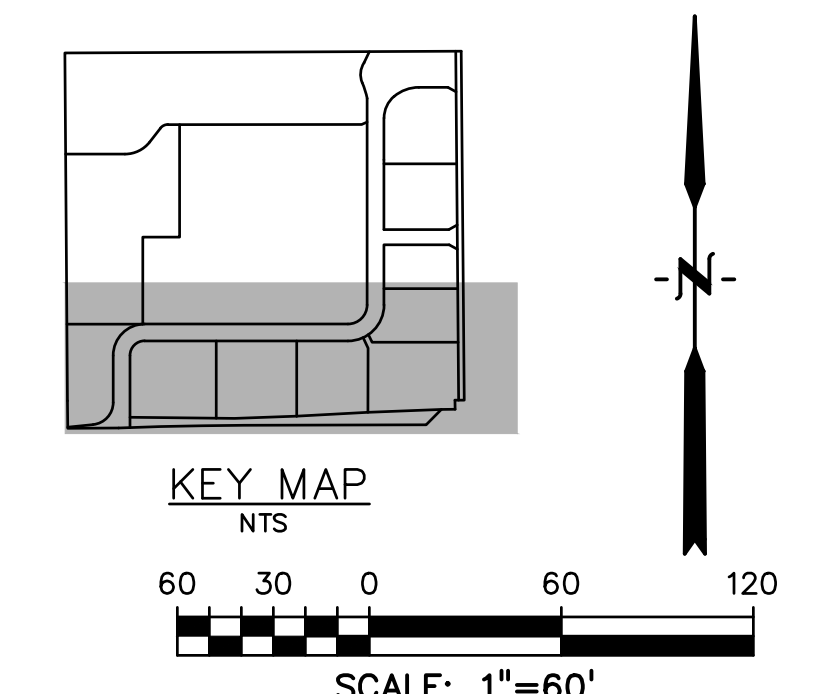
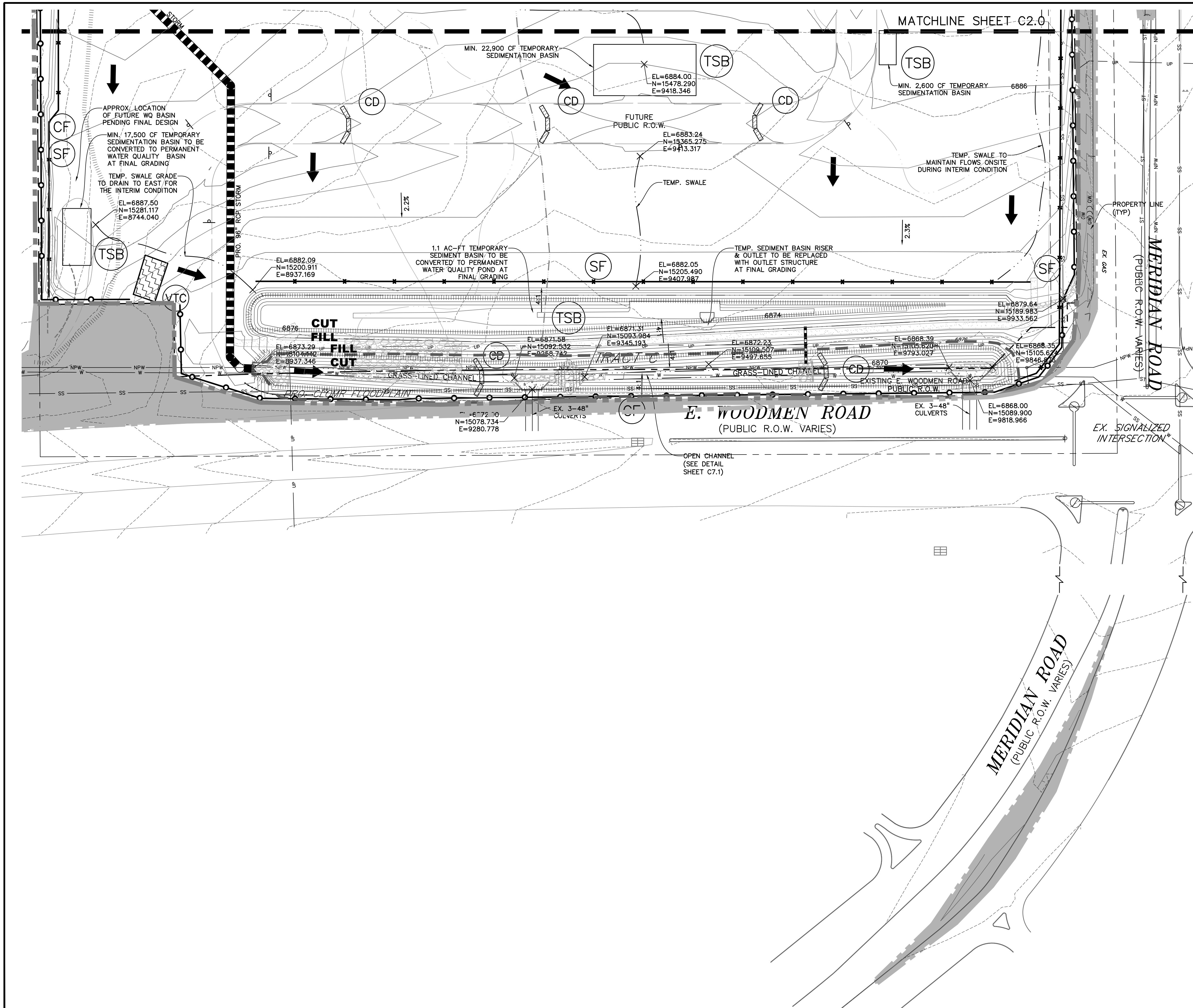
DRAWING SCALE:
HORIZONTAL: 1"=60'
VERTICAL: N/A

**INITIAL GRADING
& EROSION
CONTROL PLAN**

PROJECT NO. 20988-00CSCV
DRAWING NO.

C2.0

SHEET: 3 OF 27



LEGEND	
PROPERTY LINE	---
PROPOSED INTERMEDIATE CONTOUR
PROPOSED INDEX CONTOUR 6245
EX. INTERMEDIATE CONTOUR
EX. INDEX CONTOUR 6245
CUT FILL DELINEATION	---
LIMITS OF DISTURBANCE/CONSTRUCTION	---
PROPOSED STORM SEWER	---
PROPOSED STORM INLET	■
EX. OVERHEAD ELECTRIC	OE
EX. SANITARY SEWER	SS
EX. PETROLEUM	UP
EX. GAS	G
EX. RAW WATER	NPW
EX. WATER	W
EX. STORM SEWER	ST
TEMPORARY SWALE	---
DIRECTION OF FLOW	↑
SILT FENCE	SF
CONSTRUCTION FENCE	CF
VEHICLE TRACKING CONTROL	VTC
STRAW BALE CHECK DAM	CD
CONCRETE WASHOUT AREA	CWA
STABILIZED STAGING AREA	SSA
TEMPORARY SEDIMENT BASIN	TSB
OFFSITE IMPROVEMENTS	---
REF. INTERIM/FINAL GEC PLAN	---

- NOTE
1. GRADING IS NOT PERMITTED WITHIN THE COUNTY RIGHT-OF-WAY DURING THE INITIAL CONDITION, EXCEPT FOR THE OPEN CHANNEL ALONG E. WOODMEN RD.
 2. EXISTING SITE IS 90% VEGETATED WITH NATURAL NATIVE GRASSES.
 3. NO RETAINING WALLS ARE PROPOSED AT THE INITIAL CONDITION.

PREPARED BY:

DREXEL, BARRELL & CO.
Engineers • Surveyors
3 SOUTH 7TH STREET
COLORADO SPGS, COLORADO 80905
CONTACT: TIM D. McCONNELL, P.E.
(719)260-0887
BOULDER • COLORADO SPRINGS

CLIENT:

HUMMEL INVESTMENTS, LLC
8117 PRESTON ROAD, SUITE 120
DALLAS, TEXAS 75225
(214) 416-9820

OVERLOT GRADING, POND SR4 & UTILITY
CONSTRUCTION DRAWINGS FOR

**FALCON
MARKETPLACE**
FALCON, COLORADO

ISSUE	DATE
1ST SUBMITTAL	6-20-17
RESUBMITTAL	9-6-18
REVISED	7-24-20
DESIGNED BY:	TDM
DRAWN BY:	KGV
CHECKED BY:	TDM
FILE NAME:	

COLORADO REGISTERED
TIM D. McCONNELL
33797
2-13-20
PROFESSIONAL ENGINEER

PREPARED UNDER MY DIRECT
SUPERVISION FOR AND ON BEHALF
OF DREXEL, BARRELL & CO.

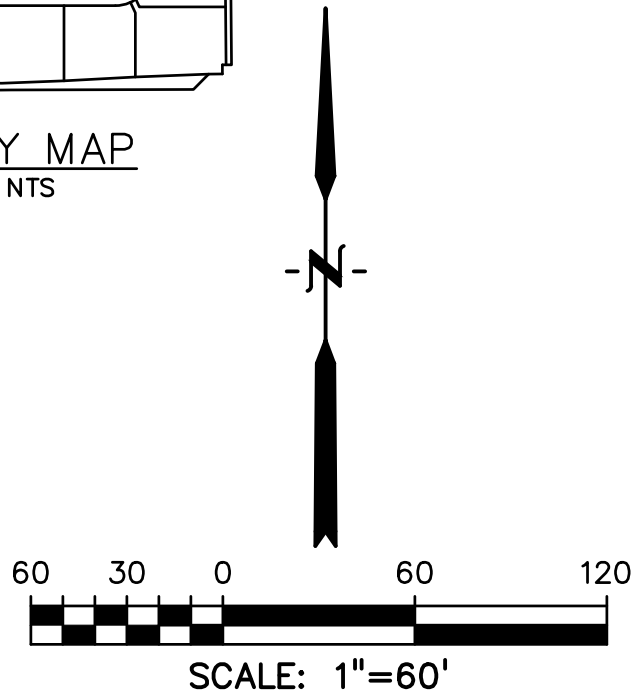
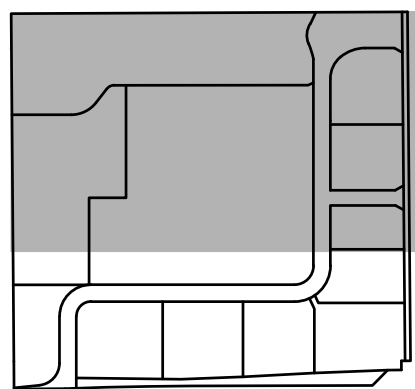
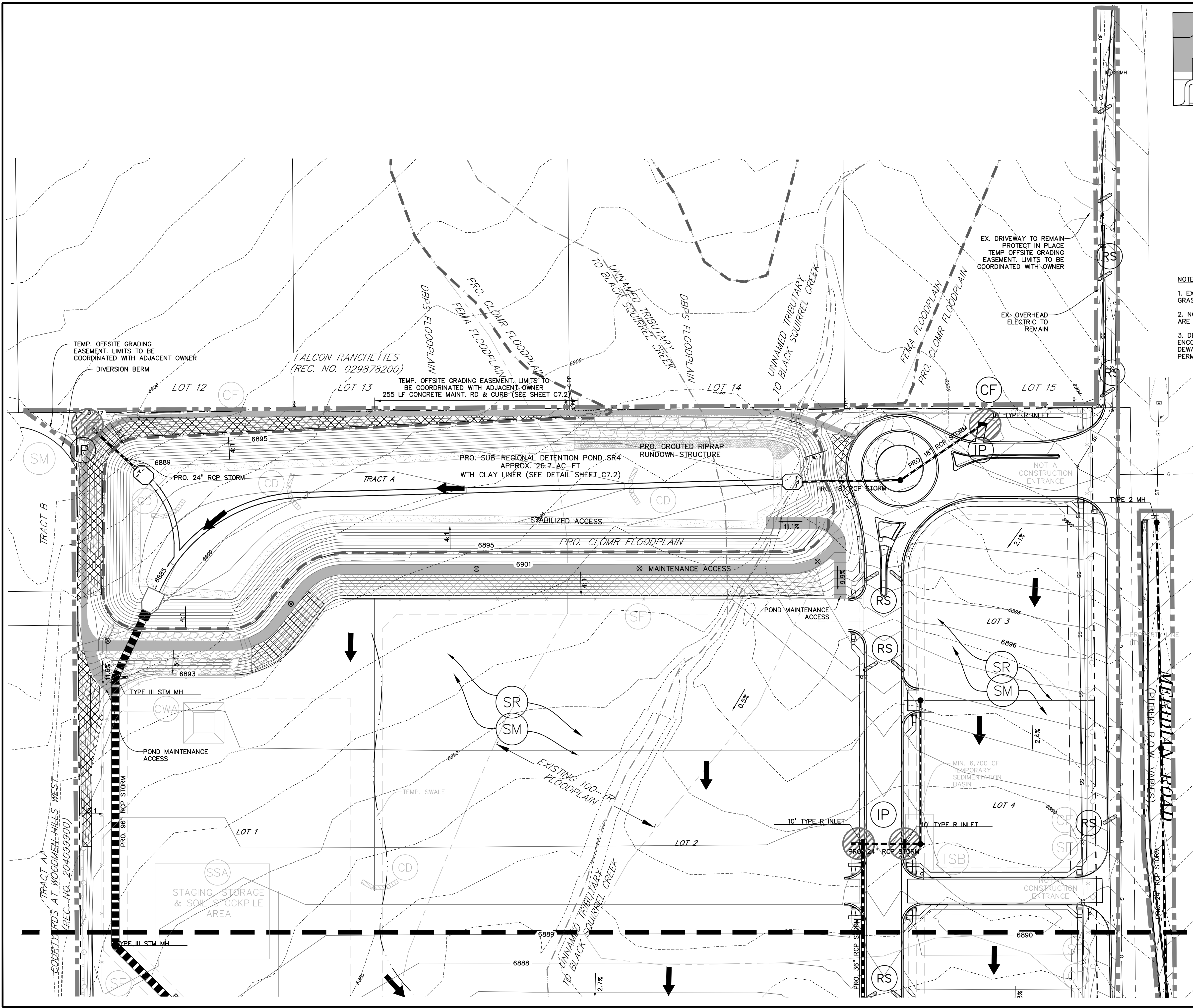
DRAWING SCALE:
HORIZONTAL: 1"=60'
VERTICAL: N/A

INITIAL GRADING
& EROSION
CONTROL PLAN

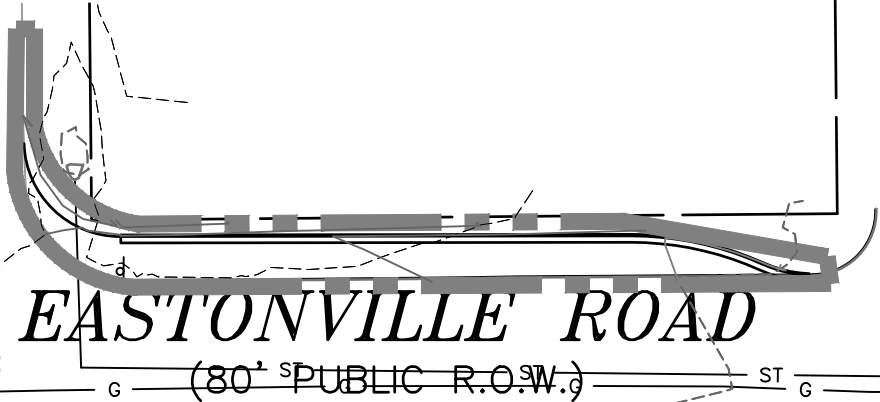
PROJECT NO. 20988-00CSCV
DRAWING NO.

C2.1

SHEET: 4 OF 27



- NOTES:
1. EXISTING SITE IS 90% VEGETATED WITH NATURAL NATIVE GRASSES.
 2. NO DEDICATED ASPHALT OR CONCRETE BATCH PLANTS ARE TO BE USED ONSITE.
 3. DEWATERING IS NOT ANTICIPATED, BUT MAY BE ENCOUNTERED IN THE DETENTION FACILITIES. COORDINATE DEWATERING WITH EL PASO COUNTY AND OBTAIN CDPE PERMITS IN ACCORDANCE WITH SWMP DOCUMENTATION.



LEGEND

PROPERTY LINE.....

PROPOSED INTERMEDIATE CONTOUR.....

PROPOSED INDEX CONTOUR..... 6245

EX. INTERMEDIATE CONTOUR.....

EX. INDEX CONTOUR..... 6245

CUT FILL DELINEATION.....

LIMITS OF DISTURBANCE/CONSTRUCTION.....

PROPOSED STORM SEWER.....

PROPOSED STORM INLET.....

EX. OVERHEAD ELECTRIC..... OE

EX. SANITARY SEWER..... SS

EX. PETROLEUM..... UP

EX. GAS..... G

EX. RAW WATER..... RW

EX. WATER..... W

EX. STORM SEWER..... ST

EMBANKMENT MONITOR.....

DIRECTION OF FLOW.....

SILT FENCE SEE DETAIL 3/C4.2..... SF

CONSTRUCTION FENCE..... CF

VEHICLE TRACKING CONTROL SEE DETAIL 5/C4.2..... VTC

EROSION CONTROL BLANKET (FOR AREAS WITH SLOPE > 3:1)..... ECB

STRAW BALE CHECK DAM..... CD

CONCRETE WASHOUT AREA..... CWA

SURFACE ROUGHENING..... SR

TEMPORARY SEEDING & MULCHING..... SM

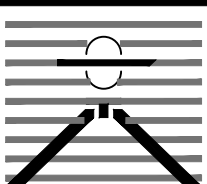
STABILIZED STAGING AREA..... SSA

TEMPORARY SEDIMENT BASIN..... TSB

ROCK SOCKS..... RS

EL PASO COUNTY FILE # SF-19-001

PREPARED BY:


DREXEL, BARRELL & CO.
Engineers • Surveyors
3 SOUTH 7TH STREET
COLORADO SPGS, COLORADO 80905
CONTACT: TIM D. McCONNELL, P.E.
(719)260-0887
BOULDER • COLORADO SPRINGS

CLIENT:


LG HI FALCON, LLC
3953 MAPLE AVE., #290
DALLAS, TEXAS 75219
(214) 416-9820

CONSTRUCTION DRAWINGS FOR

FALCON MARKETPLACE
FALCON, COLORADO

ISSUE	DATE
90% SUBMITTAL	5-6-19
REVISED	8-28-20

DESIGNED BY: TDM
DRAWN BY: KGV
CHECKED BY: TDM
FILE NAME:



PREPARED UNDER MY DIRECT SUPERVISION FOR AND ON BEHALF OF DREXEL, BARRELL & CO.

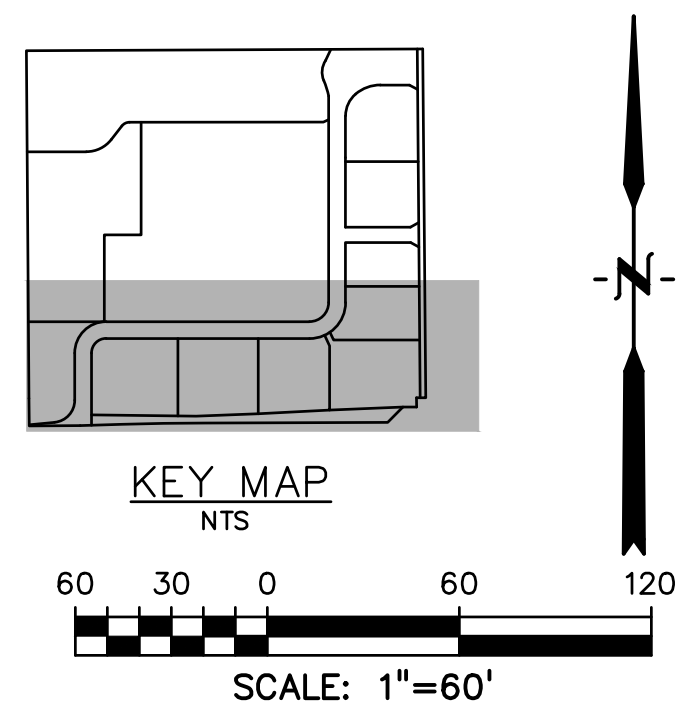
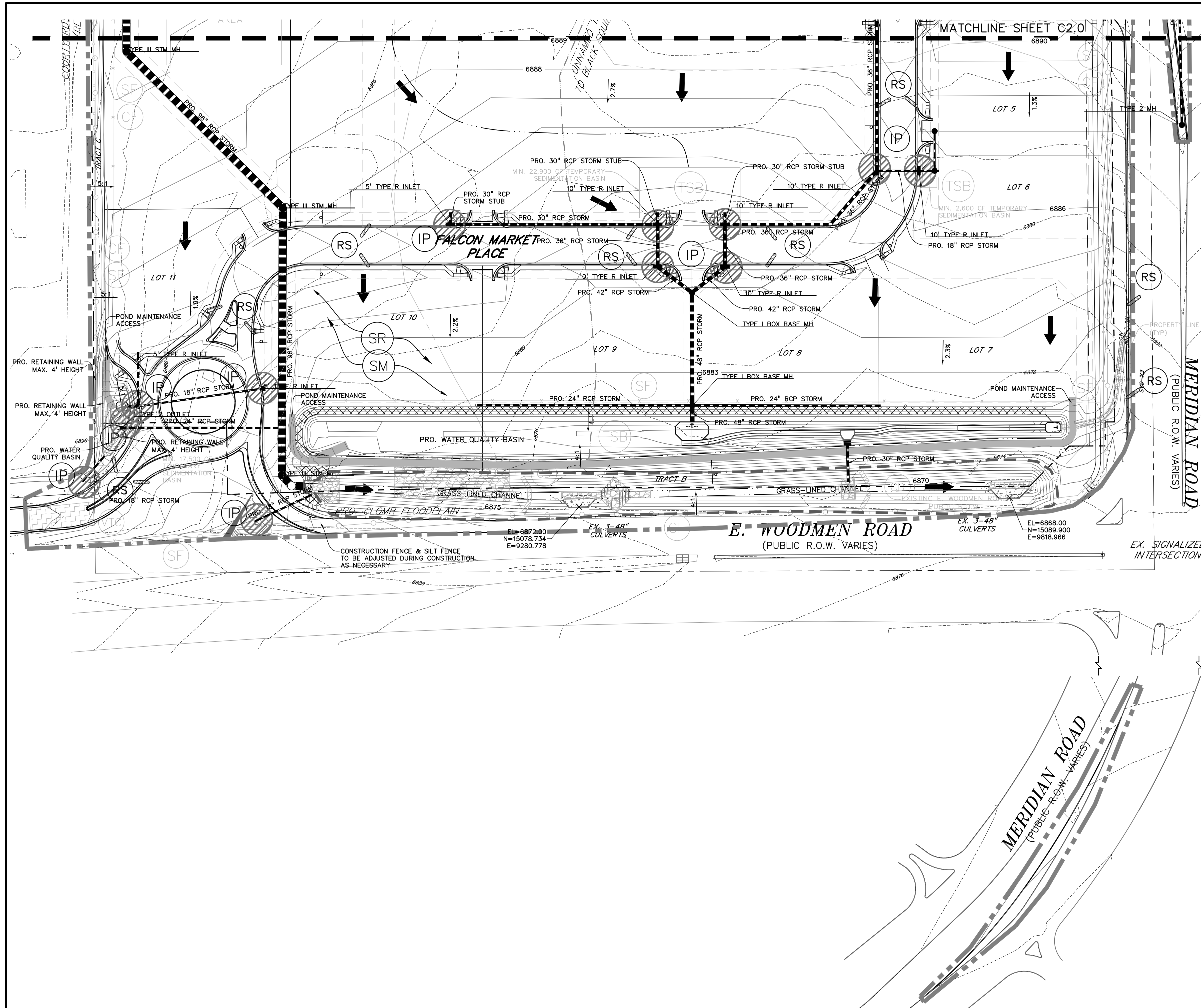
DRAWING SCALE:
HORIZONTAL: 1"=60'
VERTICAL: N/A

INTERIM/FINAL GRADING & EROSION CONTROL PLAN

PROJECT NO. 20988-00CSCV
DRAWING NO.

C2.10

SHEET: 8 OF 48



LEGEND	
PROPERTY LINE	---
PROPOSED INTERMEDIATE CONTOUR	---
PROPOSED INDEX CONTOUR	6245
EX. INTERMEDIATE CONTOUR	---
EX. INDEX CONTOUR	6245
CUT FILL DELINEATION	---
LIMITS OF DISTURBANCE/CONSTRUCTION	---
PROPOSED STORM SEWER	---
PROPOSED STORM INLET	■
EX. OVERHEAD ELECTRIC	OE
EX. SANITARY SEWER	SS
EX. PETROLEUM	UP
EX. GAS	G
EX. RAW WATER	RW
EX. WATER	W
EX. STORM SEWER	ST
TEMPORARY SWALE	---
DIRECTION OF FLOW	↑
SILT FENCE SEE DETAIL 3/C4.2	SF
CONSTRUCTION FENCE	CF
VEHICLE TRACKING CONTROL SEE DETAIL 5/C4.2	VTC
EROSION CONTROL BLANKET (FOR AREAS WITH SLOPE > 3:1)	ECB
STRAW BALE CHECK DAM	CD
CONCRETE WASHOUT AREA	CWA
SURFACE ROUGHENING	SR
TEMPORARY SEEDING & MULCHING	SM
STABILIZED STAGING AREA	SSA
TEMPORARY SEDIMENT BASIN	TSB
ROCK SOCKS	RS

NOTES:
1. EXISTING SITE IS 90% VEGETATED WITH NATURAL NATIVE GRASSES.
2. NO DEDICATED ASPHALT OR CONCRETE BATCH PLANTS ARE TO BE USED ONSITE.
3. DEWATERING IS NOT ANTICIPATED, BUT MAY BE ENCOUNTERED IN THE DETENTION FACILITIES. COORDINATE DEWATERING WITH EL PASO COUNTY AND OBTAIN CDPHE PERMITS IN ACCORDANCE WITH SWMP DOCUMENTATION.

PREPARED BY:

DREXEL, BARRELL & CO.
Engineers • Surveyors
3 SOUTH 7TH STREET
COLORADO SPGS, COLORADO 80905
CONTACT: TIM D. McCONNELL, P.E.
(719)260-0887
BOULDER • COLORADO SPRINGS

CLIENT:

LG HI FALCON, LLC
3953 MAPLE AVE., #290
DALLAS, TEXAS 75219
(214) 416-9820

CONSTRUCTION DRAWINGS FOR
FALCON MARKETPLACE
FALCON, COLORADO

ISSUE	DATE
90% SUBMITTAL	5-6-19
REVISED	8-28-20
DESIGNED BY:	TDM
DRAWN BY:	KGV
CHECKED BY:	TDM
FILE NAME:	

PREPARED UNDER MY DIRECT SUPERVISION FOR AND ON BEHALF OF DREXEL, BARRELL & CO.

DRAWING SCALE:
HORIZONTAL: 1"=60'
VERTICAL: N/A

INTERIM/FINAL
GRADING & EROSION
CONTROL PLAN

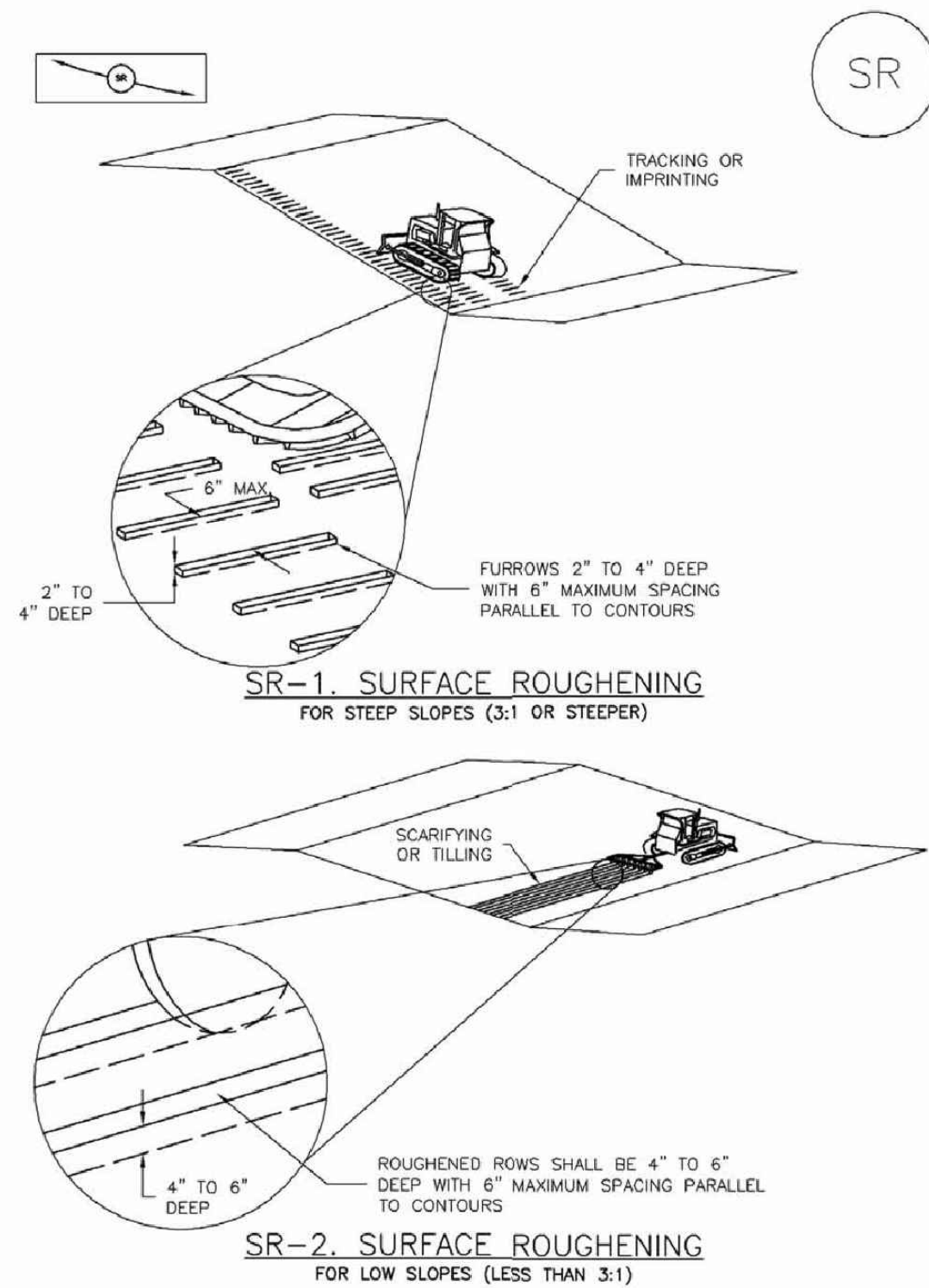
PROJECT NO. 20988-00CSCV
DRAWING NO.

C2.11

SHEET: 9 OF 48

Surface Roughening (SR)

EC-1



November 2010 Urban Drainage and Flood Control District
Urban Storm Drainage Criteria Manual Volume 3

SR-3

EC-2 Temporary and Permanent Seeding (TS/PS)

Table TS/PS-3. Seeding Dates for Annual and Perennial Grasses

Seeding Dates	Annual Grasses (Numbers in table reference species in Table TS/PS-1)		Perennial Grasses	
	Warm	Cool	Warm	Cool
January 1–March 15			✓	✓
March 16–April 30	4	1,2,3	✓	✓
May 1–May 15	4		✓	
May 16–June 30	4,5,6,7			
July 1–July 15	5,6,7			
July 16–August 31				
September 1–September 30		8,9,10,11		
October 1–December 31			✓	✓

Mulch

Cover seeded areas with mulch or an appropriate rolled erosion control product to promote establishment of vegetation. Anchor mulch by crimping, netting or use of a non-toxic tackifier. See the Mulching BMP Fact Sheet for additional guidance.

Maintenance and Removal

Monitor and observe seeded areas to identify areas of poor growth or areas that fail to germinate. Reseed and mulch these areas, as needed.

An area that has been permanently seeded should have a good stand of vegetation within one growing season if irrigated and within three growing seasons without irrigation in Colorado. Reseed portions of the site that fail to germinate or remain bare after the first growing season.

Seeded areas may require irrigation, particularly during extended dry periods. Targeted weed control may also be necessary.

Protect seeded areas from construction equipment and vehicle access.

TS/PS-6 Urban Drainage and Flood Control District
Urban Storm Drainage Criteria Manual Volume 3

November 2010

Temporary and Permanent Seeding (TS/PS)

EC-2

Seeding dates for the highest success probability of perennial species along the Front Range are generally in the spring from April through early May and in the fall after the first of September until the ground freezes. If the area is irrigated, seeding may occur in summer months, as well. See Table TS/PS-3 for appropriate seeding dates.

Table TS/PS-1. Minimum Drill Seeding Rates for Various Temporary Annual Grasses

Species* (Common name)	Growth Season ^b	Pounds of Pure Live Seed (PLS)/acre ^c	Planting Depth (inches)
1. Oats	Cool	35 - 50	1 - 2
2. Spring wheat	Cool	25 - 35	1 - 2
3. Spring barley	Cool	25 - 35	1 - 2
4. Annual ryegrass	Cool	10 - 15	½
5. Millet	Warm	3 - 15	½ - ¾
6. Sudangrass	Warm	5 - 10	½ - ¾
7. Sorghum	Warm	5 - 10	½ - ¾
8. Winter wheat	Cool	20 - 35	1 - 2
9. Winter barley	Cool	20 - 35	1 - 2
10. Winter rye	Cool	20 - 35	1 - 2
11. Triticale	Cool	25 - 40	1 - 2

^a Successful seeding of annual grass resulting in adequate plant growth will usually produce enough dead-plant residue to provide protection from wind and water erosion for an additional year. This assumes that the cover is not disturbed or mowed closer than 8 inches.

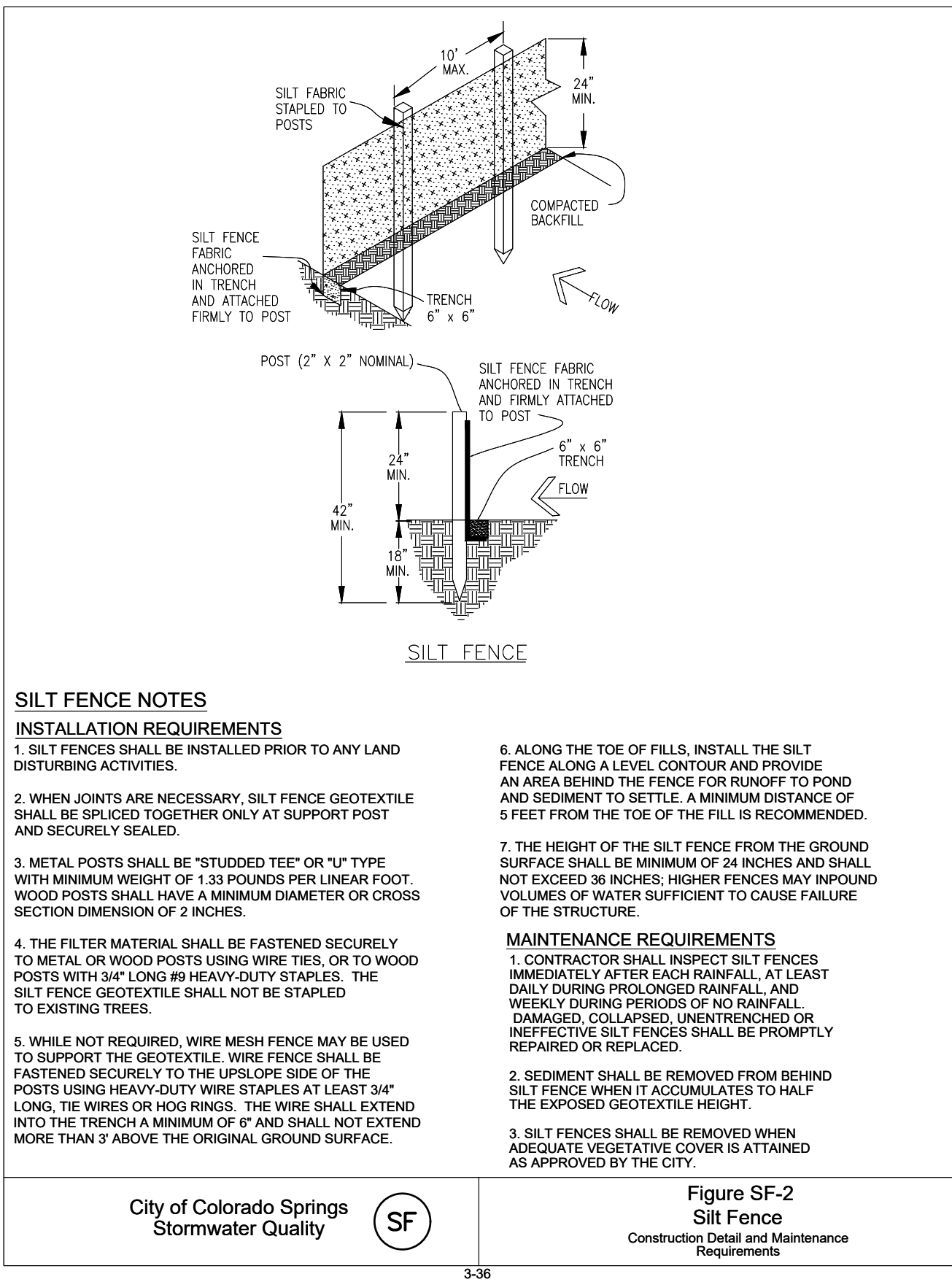
Hydraulic seeding may be substituted for drilling only where slopes are steeper than 3:1 or where access limitations exist. When hydraulic seeding is used, hydraulic mulching should be applied as a separate operation, when practical, to prevent the seeds from being encapsulated in the mulch.

^b See Table TS/PS-3 for seeding dates. Irrigation, if consistently applied, may extend the use of cool season species during the summer months.

^c Seeding rates should be doubled if seed is broadcast, or increased by 50 percent if done using a Brillion Drill or by hydraulic seeding.

November 2010 Urban Drainage and Flood Control District
Urban Storm Drainage Criteria Manual Volume 3

TS/PS-3



SILT FENCE NOTES

INSTALLATION REQUIREMENTS

1. SILT FENCES SHALL BE INSTALLED PRIOR TO ANY LAND DISTURBING ACTIVITIES.

2. WHEN JOINTS ARE NECESSARY, SILT FENCE GEOTEXTILE SHALL BE SPICED TOGETHER ONLY AT SUPPORT POST AND SECURELY SEALED.

3. METAL POSTS SHALL BE "STUDDOD TEE" OR "U" TYPE WITH MINIMUM WEIGHT OF 1.33 POUNDS PER LINEAR FOOT. WOOD POSTS SHALL HAVE A MINIMUM DIAMETER OR CROSS SECTION DIMENSION OF 2 INCHES.

4. THE FILTER MATERIAL SHALL BE FASTENED SECURELY TO METAL OR WOOD POSTS USING WIRE TIES, OR TO WOOD POSTS WITH 3/4" LONG #9 HEAVY-DUTY STAPLES. THE SILT FENCE GEOTEXTILE SHALL NOT BE STAPLED TO EXISTING TREES.

5. WHILE NOT REQUIRED, WIRE MESH FENCE MAY BE USED TO SUPPORT THE GEOTEXTILE. WIRE FENCE SHALL BE FASTENED SECURELY TO THE UPSLOPE SIDE OF THE POSTS USING HEAVY-DUTY WIRE STAPLES AT LEAST 3/4" LONG. THE WIRES OR HOE RINGS. THE WIRE SHALL EXTEND INTO THE TRENCH A MINIMUM OF 6" AND SHALL NOT EXTEND MORE THAN 3' ABOVE THE ORIGINAL GROUND SURFACE.

6. ALONG THE TOE OF FILLS, INSTALL THE SILT FENCE ALONG A LEVEL CONTOUR AND PROVIDE AN AREA BEHIND THE FENCE FOR RUNOFF TO POND AND SEDIMENT TO SETTLE. A MINIMUM DISTANCE OF 5 FEET FROM THE TOE OF THE FILL IS RECOMMENDED.

7. THE HEIGHT OF THE SILT FENCE FROM THE GROUND SURFACE SHALL BE MINIMUM OF 24 INCHES AND SHALL NOT EXCEED 36 INCHES; HIGHER FENCES MAY INPOUND VOLUMES OF WATER SUFFICIENT TO CAUSE FAILURE OF THE STRUCTURE.

8. SEDIMENT SHALL BE REMOVED FROM BEHIND SILT FENCE WHEN IT ACCUMULATES TO HALF THE EXPOSED GEOTEXTILE HEIGHT.

9. SILT FENCES SHALL BE REMOVED WHEN ADEQUATE VEGETATIVE COVER IS ATTAINED AS APPROVED BY THE CITY.

City of Colorado Springs
Stormwater Quality



Figure SF-2
Silt Fence
Construction Detail and Maintenance
Requirements

3-36

MULCHING NOTES

INSTALLATION REQUIREMENTS

1. ALL DISTURBED AREAS MUST BE MULCHED WITHIN 21 DAYS AFTER FINAL GRADE AND SEEDING AREAS ARE TO BE MULCHED WITHIN 24 HOURS AFTER SEEDING.

2. MATERIAL USED FOR MULCH CAN BE CERTIFIED CLEAN, WEED- AND SEED-FREE LONG STEMMED FIELD OR MARSH HAY, OR STRAW OF OATS, BARLEY, WHEAT, RYE, OR TRITICALE CERTIFIED BY THE COLORADO DEPARTMENT OF AGRICULTURE WEED FREE FORAGE CERTIFICATION PROGRAM.

3. HYDRAULIC MULCHING MATERIAL SHALL CONSIST OF VIRGIN WOOD FIBER MANUFACTURED FROM CLEAN WHOLE WOOD CHIPS. WOOD CHIPS CANNOT CONTAIN ANY GROWTH OR GERMINATION INHIBITORS OR BE PRODUCED FROM RECYCLED MATERIAL. GRAVEL CAN ALSO BE USED.

4. MULCH IS TO BE APPLIED EVENLY AT A RATE OF 2 TONS PER ACRE.

5. MULCH IS TO BE ANCHORED EITHER BY CRIMPING (TUCKING MULCH FIBERS 4 INCHES INTO THE SOIL), USING NETTING (USED ON SMALL AREAS WITH STEEP SLOPES), OR WITH A TACKIFIER.

6. HYDRAULIC MULCHING AND TACKIFIERS ARE NOT TO BE USED IN THE PRESENCE OF FREE SURFACE WATER.

MAINTENANCE REQUIREMENTS

1. REGULAR INSPECTIONS ARE TO BE MADE OF ALL MULCHED AREAS.

2. MULCH IS TO BE REPLACED IMMEDIATELY IN THOSE AREAS IT HAS BEEN REMOVED, AND IF NECESSARY THE AREA SHOULD BE RESEEDING.

City of Colorado Springs
Stormwater Quality

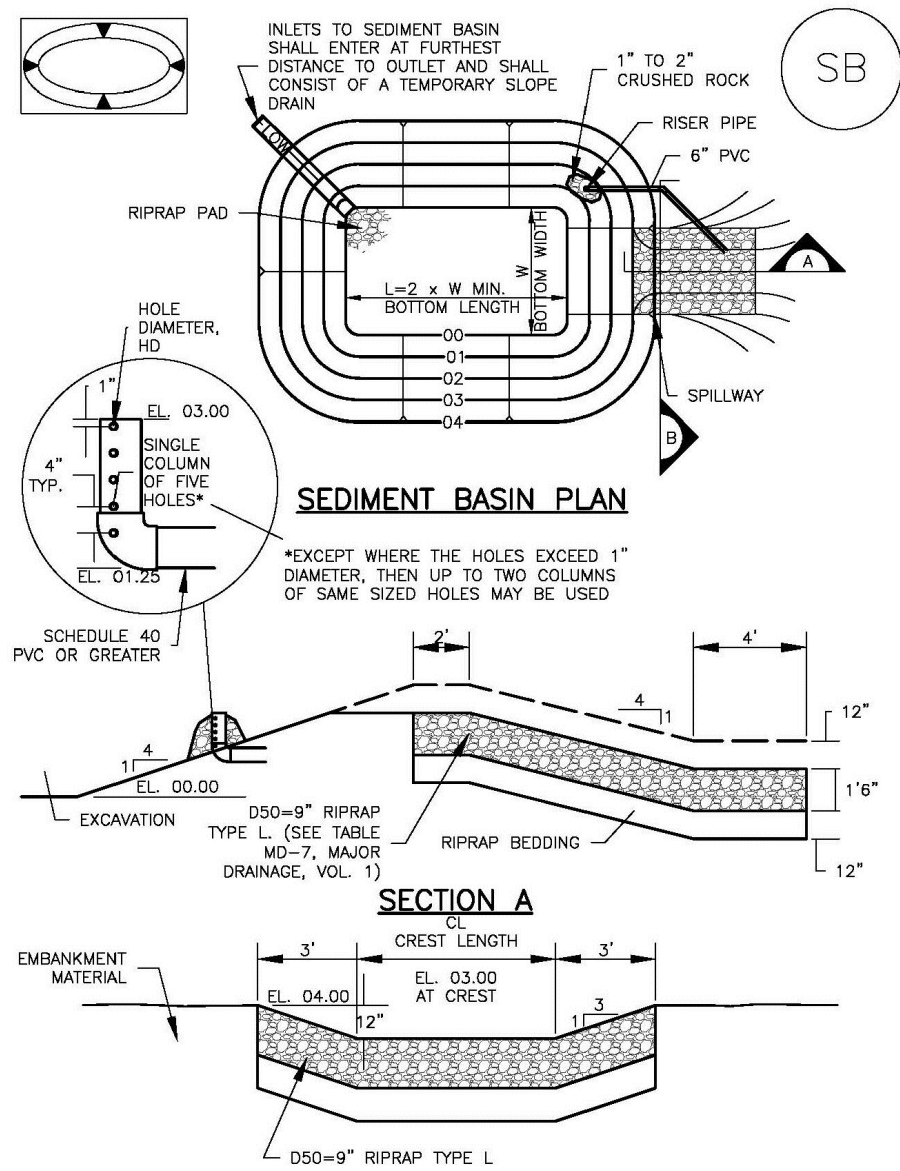


Figure MU-1
Mulching
Construction Detail and Maintenance
Requirements

3-30

Sediment Basin (SB)

SC-7



August 2013 Urban Drainage and Flood Control District
Urban Storm Drainage Criteria Manual Volume 3

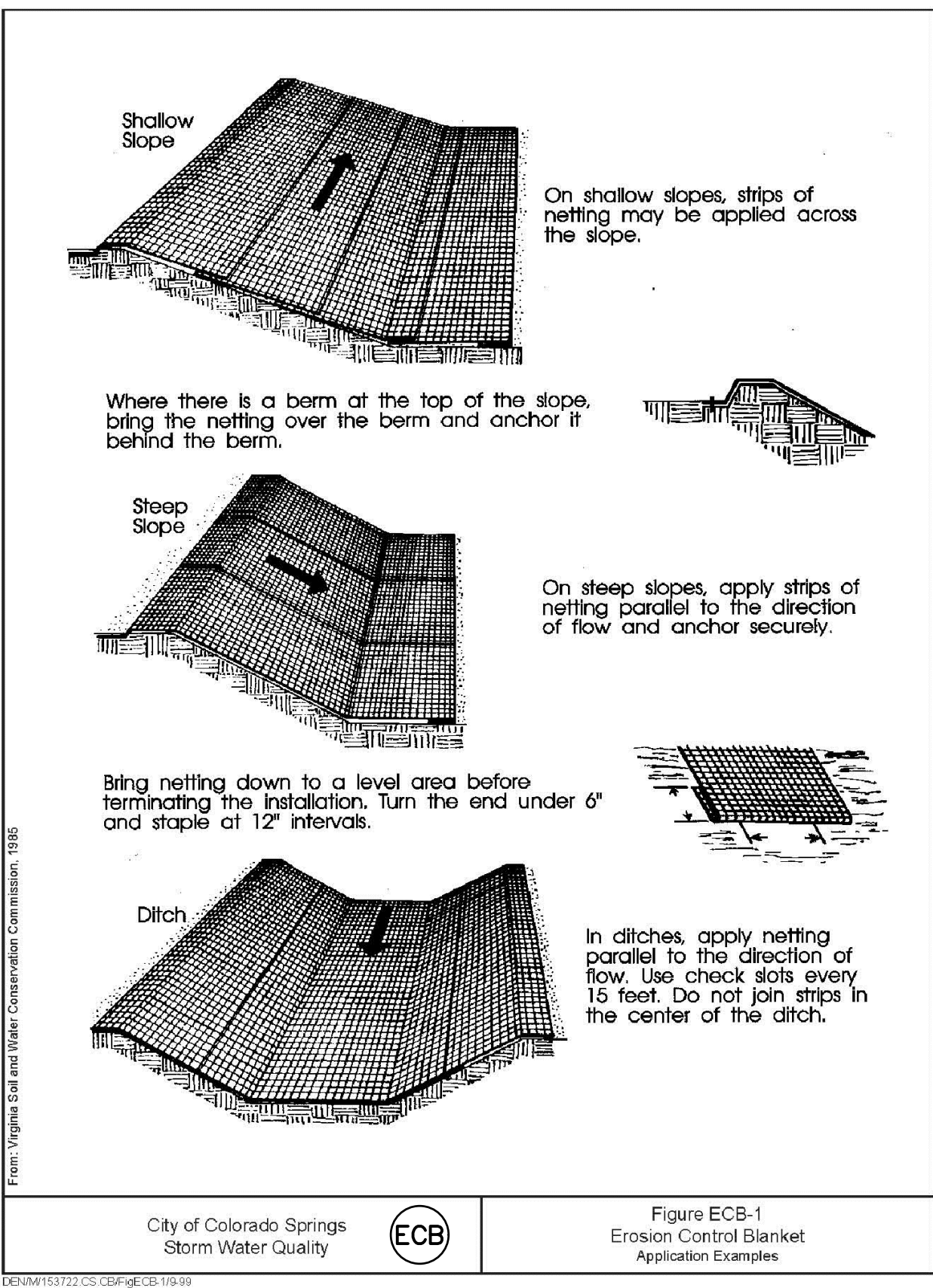
SB-5

RECOMMENDED PERMANENT SEEDING MIX:

APPLY AT 25 POUNDS OF PURE LIVE SEED (PLS) PER ACRE AND A PLANTING DEPTH OF 1 TO 2 INCHES.

SHARP'S 2011 DRYLAND PASTURE MIX

SPECIES - VARIETY	LOT #	% OF MIX	PURITY %	GERM %	ORIGIN
PUBESCENT WHEATGRASS, LUNA	BG3266-9	25.00%	94.81%	91.00%	WY
INTERMEDIATE WHEATGRASS, RUSH	BG3237-8	20.00%	98.97%	95.00%	WY
SMOOTH BROME, LINCOLN	YYY-3058	20.00%	94.72%	85.00%	KS
TETRAPLOID PER RYE, FULL THROTTLE	L145-8-P23	15.00%	96.77%	90.00%	OR
ORCHARDGRASS, PROFILE	B1-9-54	15.00%	94.42%	96.00%	OR
BLUEBUNCH WHEATGRASS, SECAR	BG3248-9	5.00%	98.79%	91.00%	WY
		100.00%			

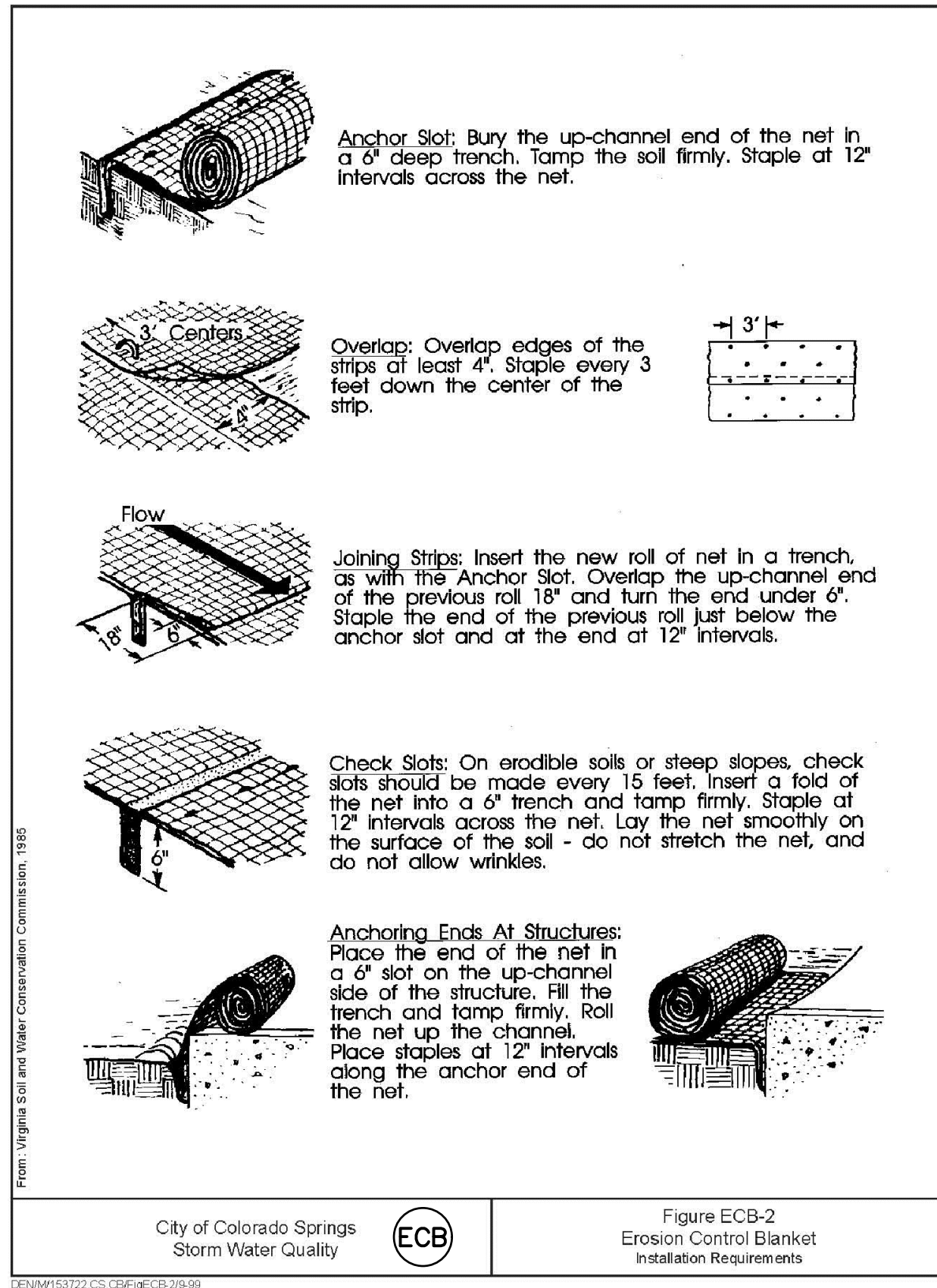


City of Colorado Springs
Storm Water Quality



Figure ECB-1
Erosion Control Blanket
Application Examples

DERM155722 CS CBR/ECB 10/09



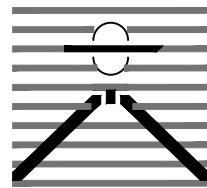
City of Colorado Springs
Storm Water Quality



Figure ECB-2
Erosion Control Blanket
Installation Requirements

DERM155722 CS CBR/ECB 10/09

PREPARED BY:



DREXEL, BARRELL & CO.
Engineers • Surveyors
3 SOUTH 7TH STREET
COLORADO SPGS, COLORADO 80905
CONTACT: TIM D. McCONNELL, P.E.
(719)260-0887
BOULDER • COLORADO SPRINGS

CLIENT:

HUMMEL INVESTMENTS, LLC

8117 PRESTON ROAD, SUITE 120
DALLAS, TEXAS 75225
(214) 416-9820

OVERLOT GRADING, POND SR4 & UTILITY CONSTRUCTION DRAWINGS FOR

FALCON MARKETPLACE FALCON, COLORADO

ISSUE	DATE
1ST SUBMITTAL	6-20-17
RESUBMITTAL	9-6-18
REVISED	4-1-20

DESIGNED BY:	TDM
DRAWN BY:	KGW
CHECKED BY:	TDM
FILE NAME:	

PREPARED UNDER MY DIRECT
SUPERVISION FOR AND ON BEHALF
OF DREXEL, BARRELL & CO.

DRAWING SCALE:
HORIZONTAL: N/A
VERTICAL: N/A

EROSION CONTROL DETAILS

PROJECT NO. 20988-00CSCV

DRAWING NO.

C2.2

SHEET: 5 OF 27

EL PASO COUNTY FILE NO: SP-17-001
CDR-16-007

