




Manifest
57 x Barrel
4 x Sign
1 x R1-2 yield

Legend
 Barrel
 R1-2 yield
 Sign



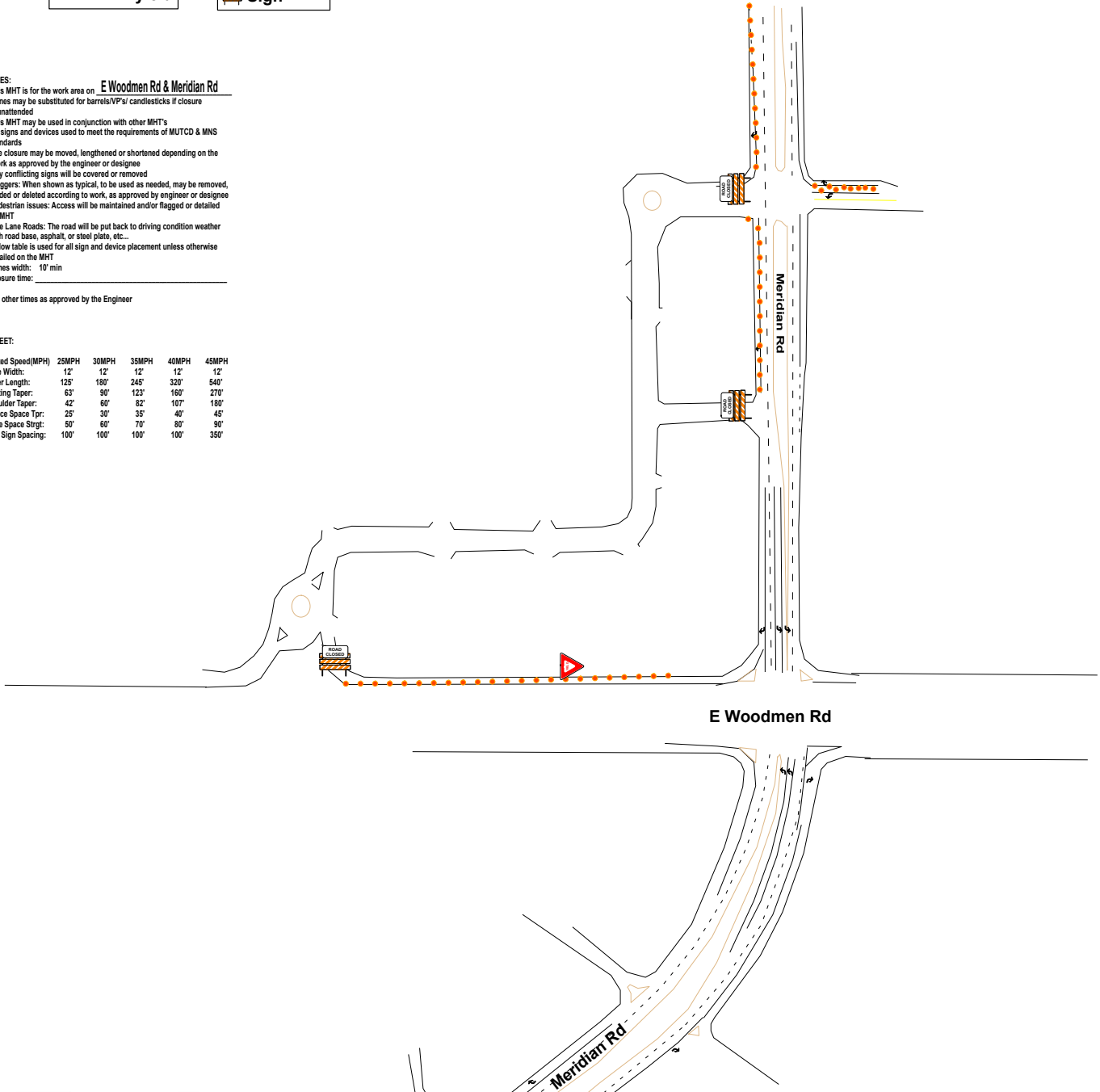
NOTES:
 -This MHT is for the work area on E Woodmen Rd & Meridian Rd

- Cones may be substituted for barrels/VP's candlesticks if closure is unattended
- This MHT may be used in conjunction with other MHT's
- All signs and devices used to meet the requirements of MUTCD & MNS standards
- The closure may be moved, lengthened or shortened depending on the work as approved by the engineer or designee
- Any conflicting signs will be covered or removed
- Flaggers: When shown as typical, to be used as needed, may be removed, added or deleted according to work, as approved by engineer or designee
- Pedestrian issues: Access will be maintained and/or flagged or detailed on MHT
- One Lane Roads: The road will be put back to driving condition weather with road base, asphalt, or steel plate, etc...
- Below table is used for all sign and device placement unless otherwise detailed on the MHT
- Lanes width: 10' min
- Closure time:

All other times as approved by the Engineer

STREET:

Posted Speed(MPH)	25MPH	30MPH	35MPH	40MPH	45MPH
Lane Width:	12'	12'	12'	12'	12'
Taper Length:	125'	180'	245'	320'	540'
Shifting Taper:	65'	90'	123'	160'	270'
Shoulder Taper:	42'	60'	82'	107'	180'
Device Space Top:	25'	30'	35'	40'	45'
Cone Space Strgt:	50'	60'	70'	80'	90'
Min. Sign Spacing:	100'	100'	100'	100'	350'



Date: 11/5/2021 Author: April Rose Cert#002739 ATSSA X *April Rose* Project: 2018-80 MHT #17 Traffic Devices

Comments: