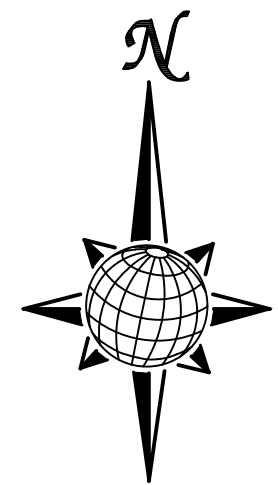
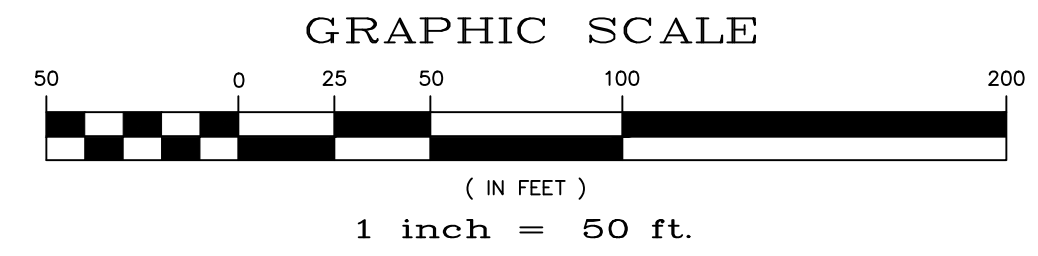
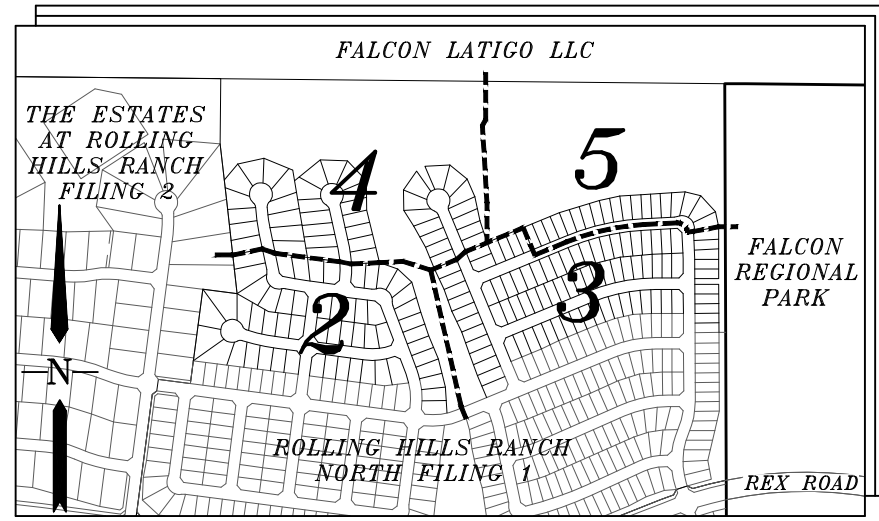




# ROLLING HILLS RANCH NORTH FILING NO. 2 AT MERIDIAN RANCH

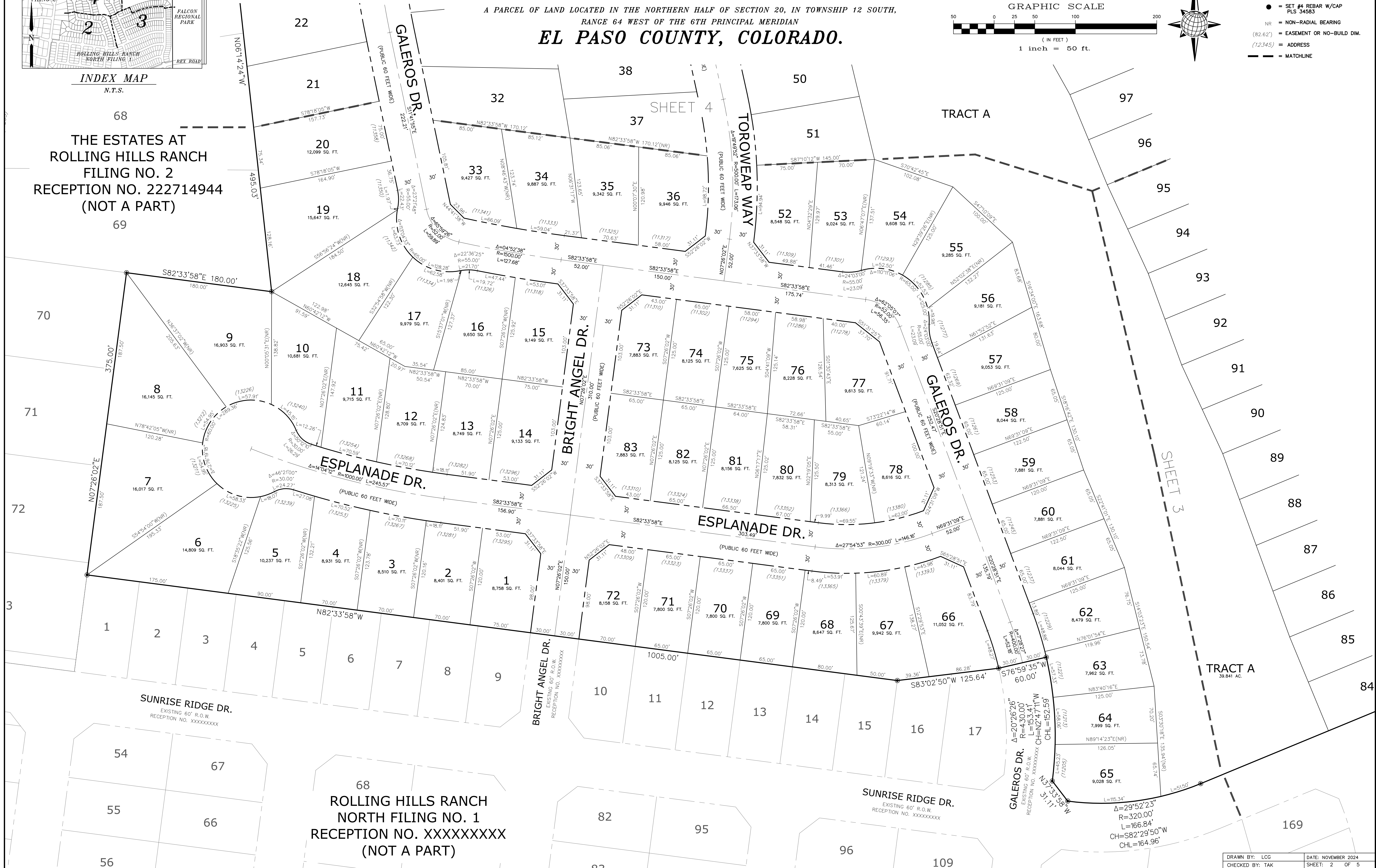
A PARCEL OF LAND LOCATED IN THE NORTHERN HALF OF SECTION 20, IN TOWNSHIP 12 SOUTH,  
RANGE 64 WEST OF THE 6TH PRINCIPAL MERIDIAN  
EL PASO COUNTY, COLORADO.



- LEGEND**
- = FOUND MONUMENT AS SHOWN
  - ⊙ = FOUND #4 REBAR WITH CAP PLS 34583
  - = SET #4 REBAR W/CAP PLS 34583
  - NR = NON-RADIAL BEARING
  - (82.62) = EASEMENT OR NO-BUILD DIM.
  - (12345) = ADDRESS
  - = MATCHLINE

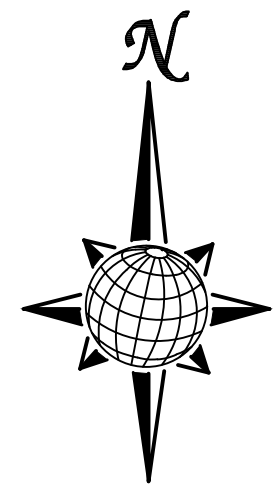
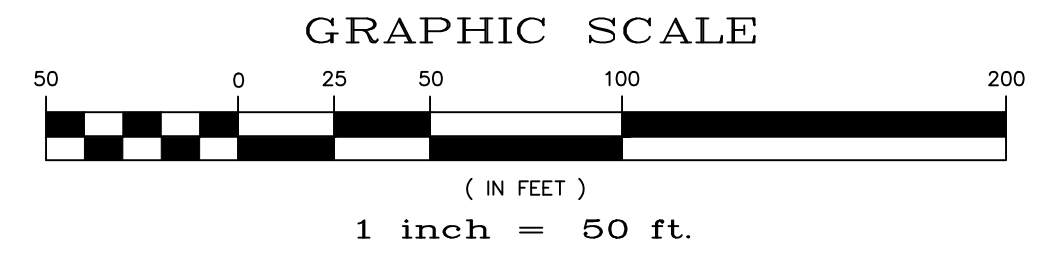
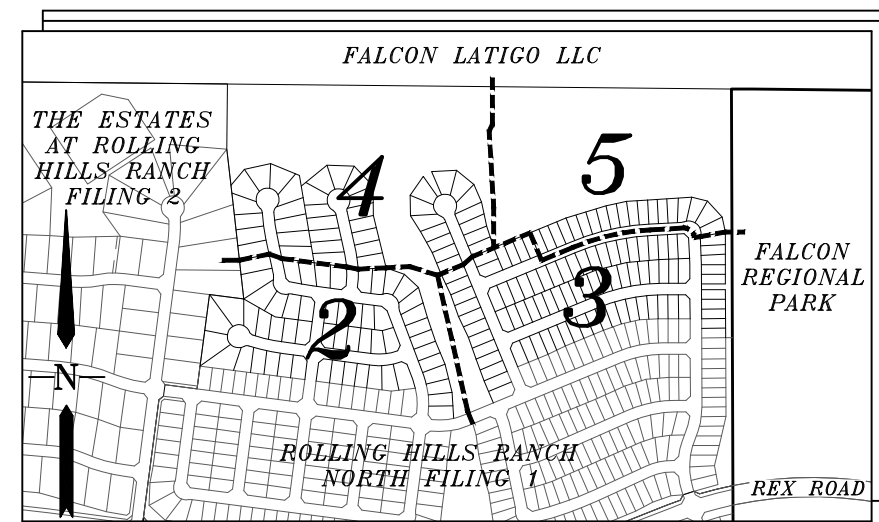
**INDEX MAP**  
N.T.S.

THE ESTATES AT  
ROLLING HILLS RANCH  
FILING NO. 2  
RECEPTION NO. 222714944  
(NOT A PART)

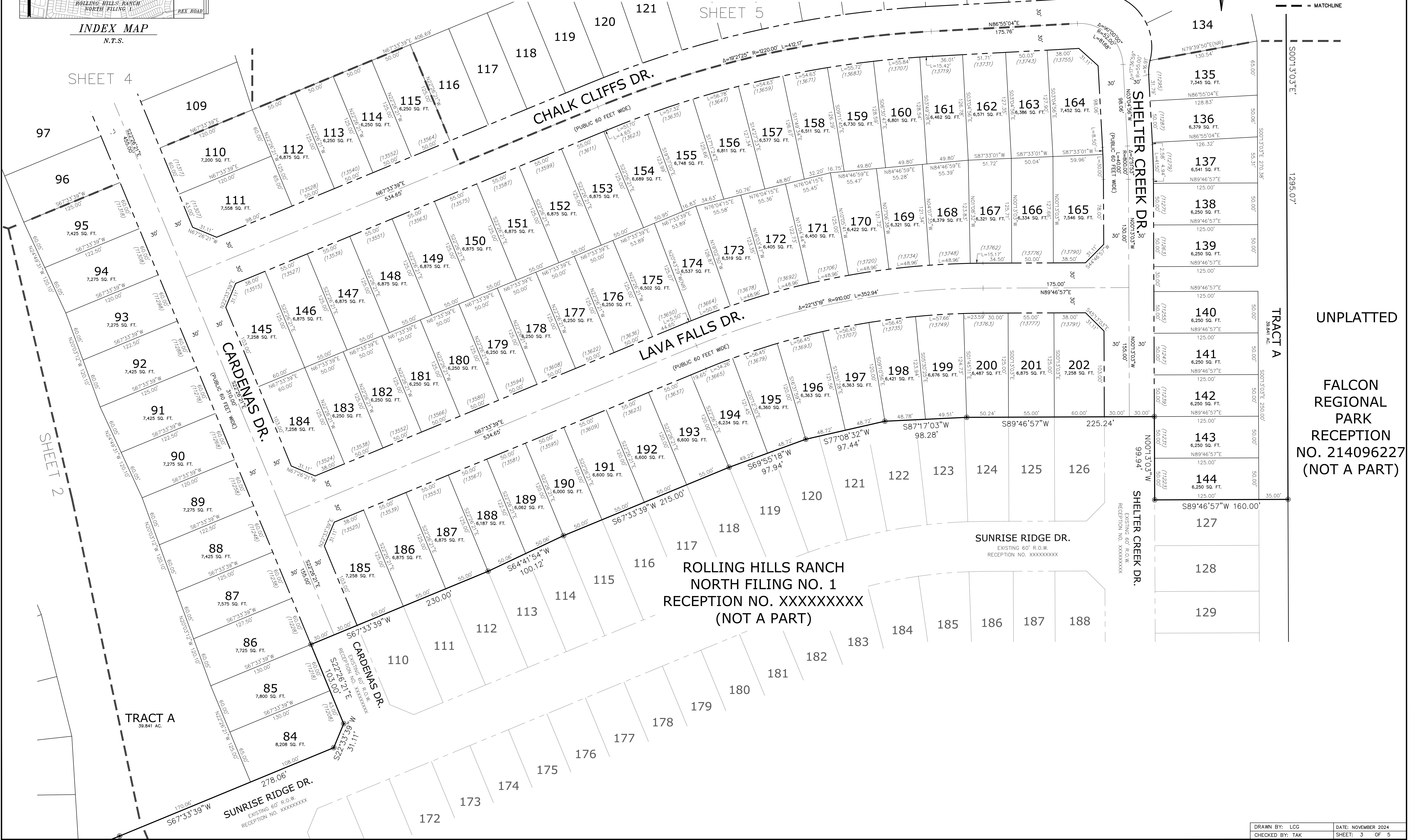


# ROLLING HILLS RANCH NORTH FILING NO. 2 AT MERIDIAN RANCH

A PARCEL OF LAND LOCATED IN THE NORTHERN HALF OF SECTION 20, IN TOWNSHIP 12 SOUTH,  
RANGE 64 WEST OF THE 6TH PRINCIPAL MERIDIAN  
**EL PASO COUNTY, COLORADO.**



- LEGEND**
- = FOUND MONUMENT AS SHOWN
  - ⊙ = FOUND #4 REBAR WITH CAP PLS 34583
  - = SET #4 REBAR W/CAP PLS 34583
  - NR = NON-RADIAL BEARING
  - (82.62) = EASEMENT OR NO-BUILD DIM.
  - (12.345) = ADDRESS
  - = MATCHLINE



FALCON LATIGO LLC  
SCH. #420000345  
UNPLATTED  
(NOT A PART)

SEC. 17

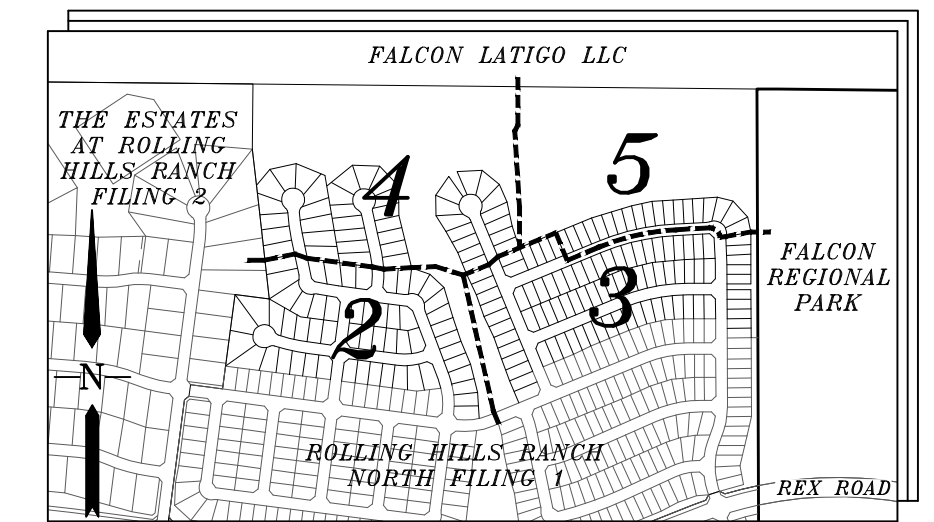
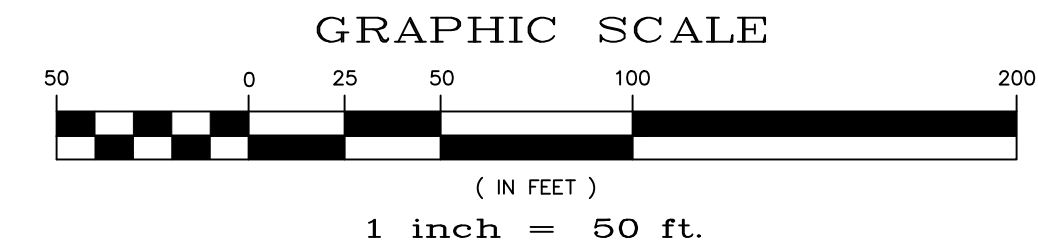
SEC. 20

- LEGEND**
- = FOUND MONUMENT AS SHOWN
  - = FOUND #4 REBAR WITH CAP PLS 34583
  - = SET #4 REBAR W/CAP PLS 34583
  - NR = NON-RADIAL BEARING
  - (82.62') = EASEMENT OR NO-BUILD DIM.
  - (12345) = ADDRESS
  - = MATCHLINE

# ROLLING HILLS RANCH NORTH

## FILING NO. 2 AT MERIDIAN RANCH

A PARCEL OF LAND LOCATED IN THE NORTHERN HALF OF SECTION 20, IN TOWNSHIP 12 SOUTH,  
RANGE 64 WEST OF THE 6TH PRINCIPAL MERIDIAN  
**EL PASO COUNTY, COLORADO.**



INDEX MAP  
N.T.S.



TRACT A  
(NOT A PART)

THE ESTATES AT  
ROLLING HILLS  
RANCH  
FILING NO. 2  
RECEPTION  
NO. 222714944  
(NOT A PART)

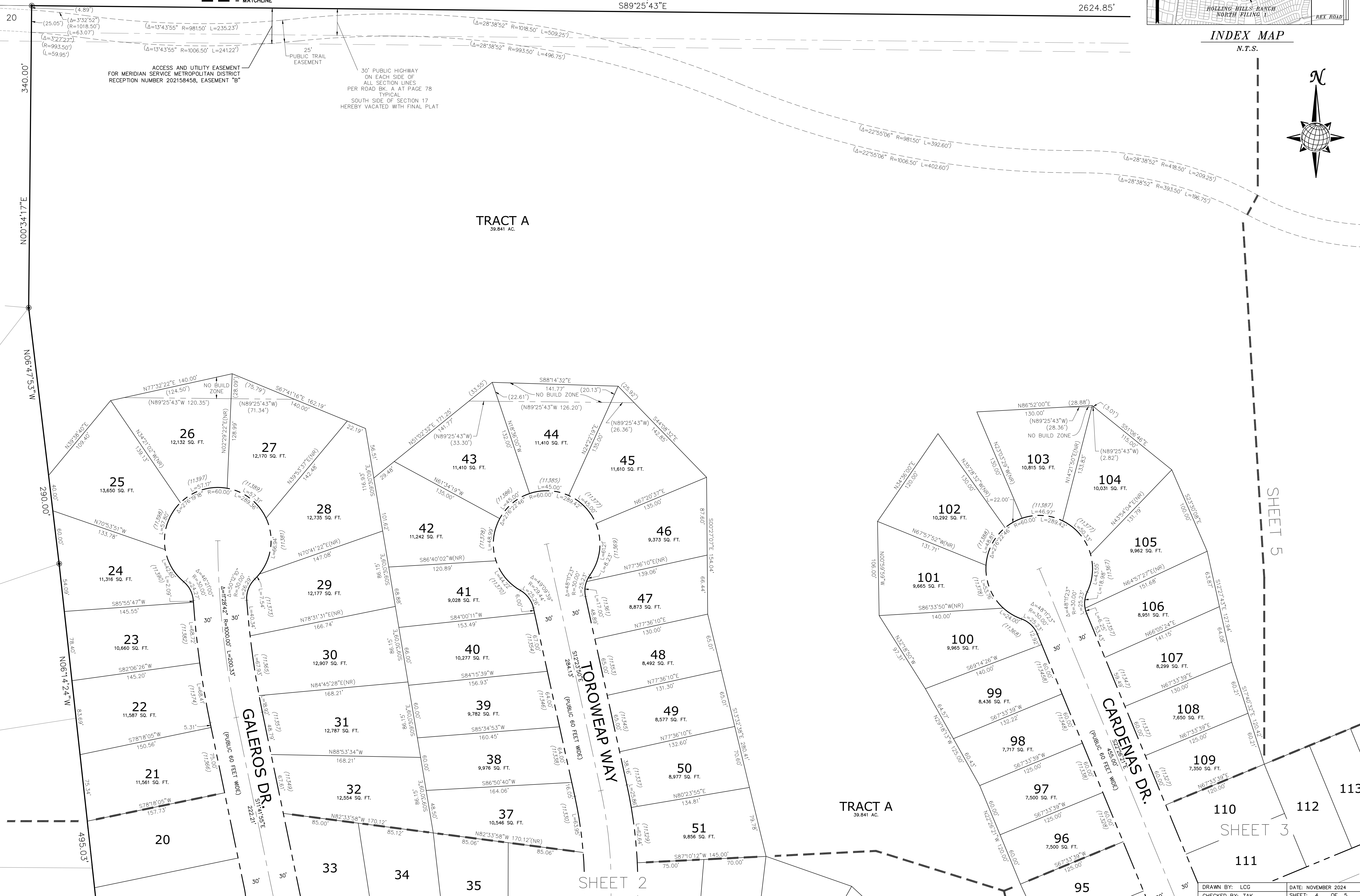
TRACT A  
39.841 AC.

65

66

67

68



SHEET 5

SHEET 3

SHEET 2

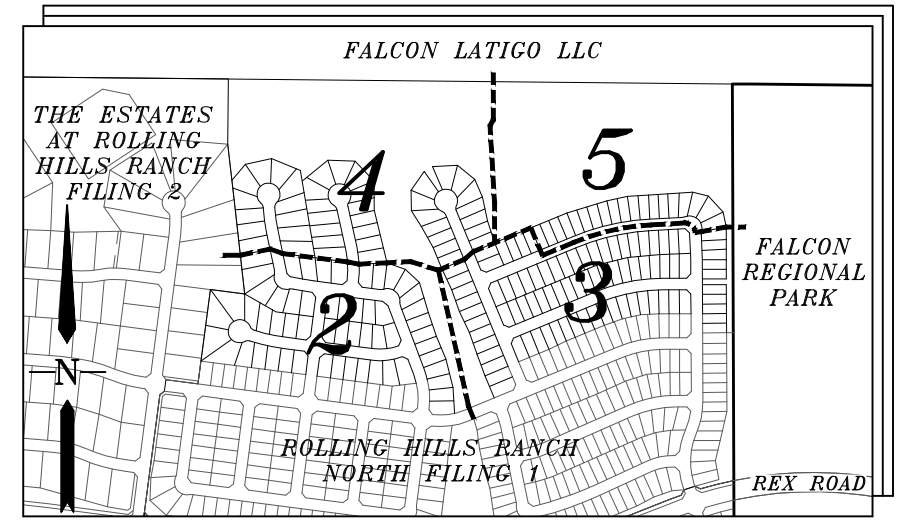
DRAWN BY: LCC  
CHECKED BY: TAK  
DATE: NOVEMBER 2024  
SHEET: 4 OF 5  
PCD PROJECT NO. SF2424

FALCON LATIGO LLC SCH. #4200000345  
UNPLATTED  
(NOT A PART)

# ROLLING HILLS RANCH NORTH

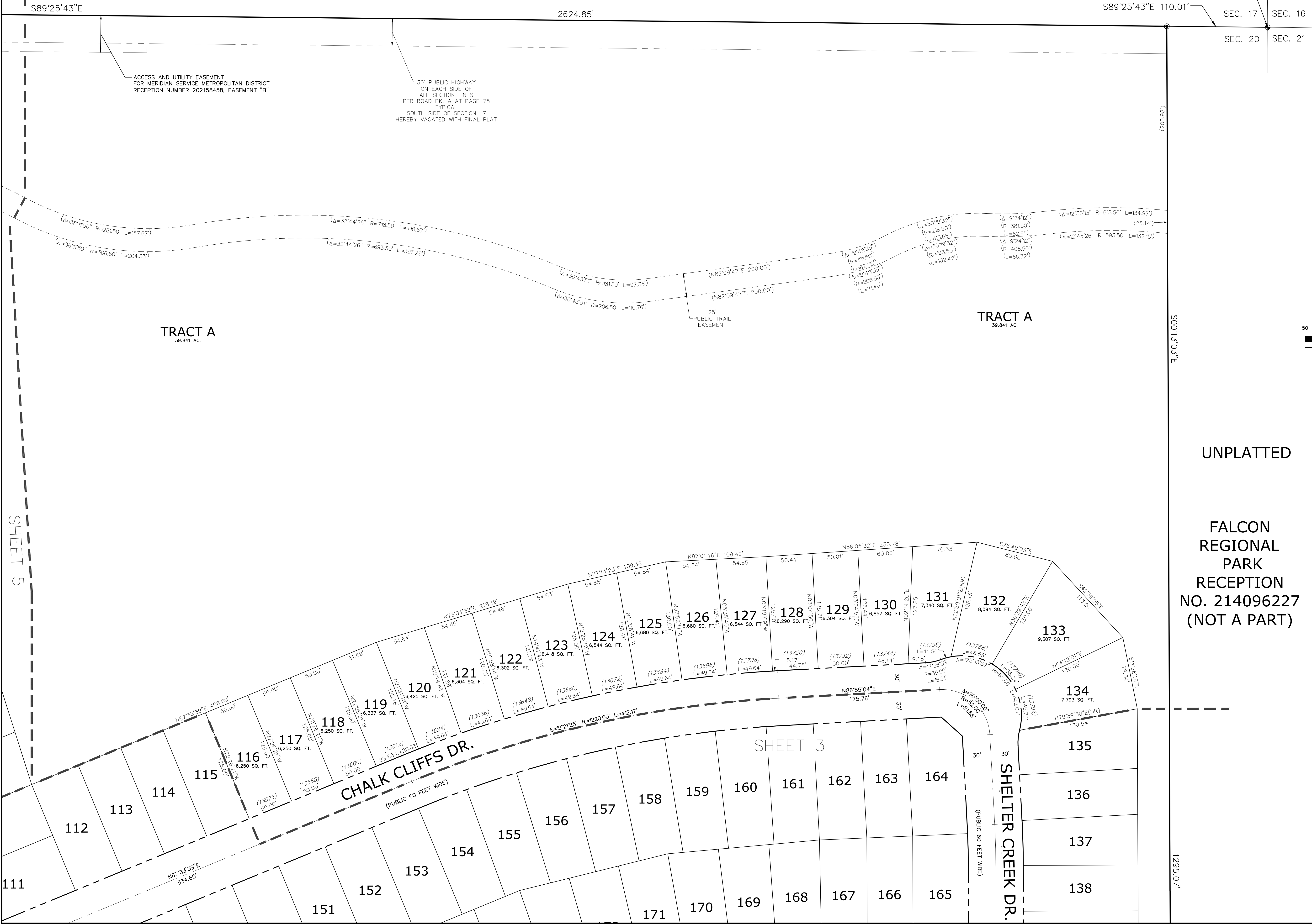
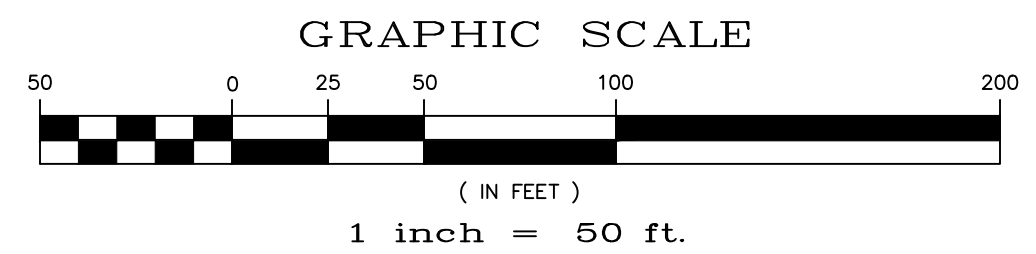
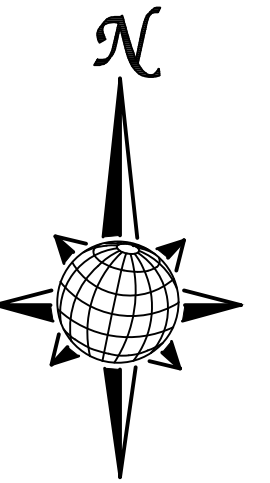
## FILING NO. 2 AT MERIDIAN RANCH

A PARCEL OF LAND LOCATED IN THE NORTHERN HALF OF SECTION 20, IN TOWNSHIP 12 SOUTH,  
RANGE 64 WEST OF THE 6TH PRINCIPAL MERIDIAN  
EL PASO COUNTY, COLORADO.



INDEX MAP  
N.T.S.

- LEGEND
- = FOUND MONUMENT AS SHOWN
  - ⊙ = FOUND #4 REBAR WITH CAP PLS 34583
  - = SET #4 REBAR W/CAP PLS 34583
  - NR = NON-RADIAL BEARING
  - (82.62') = EASEMENT OR NO-BUILD DIM.
  - (12345) = ADDRESS
  - = MATCHLINE



NE CORNER SECTION 20,  
FOUND 3 1/4" ALUMINUM CAP  
ON #6 REBAR  
STAMPED PLS 24964

500'±3.03"E

1295.07'

UNPLATTED

FALCON  
REGIONAL  
PARK  
RECEPTION  
NO. 214096227  
(NOT A PART)

SHEET 5

SHEET 3