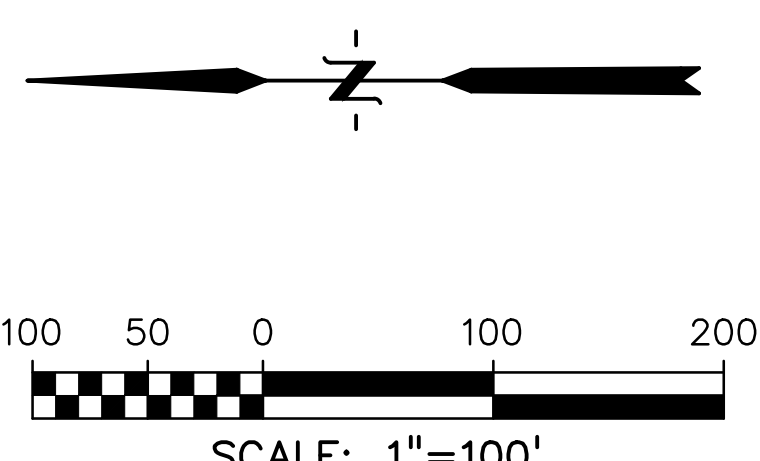
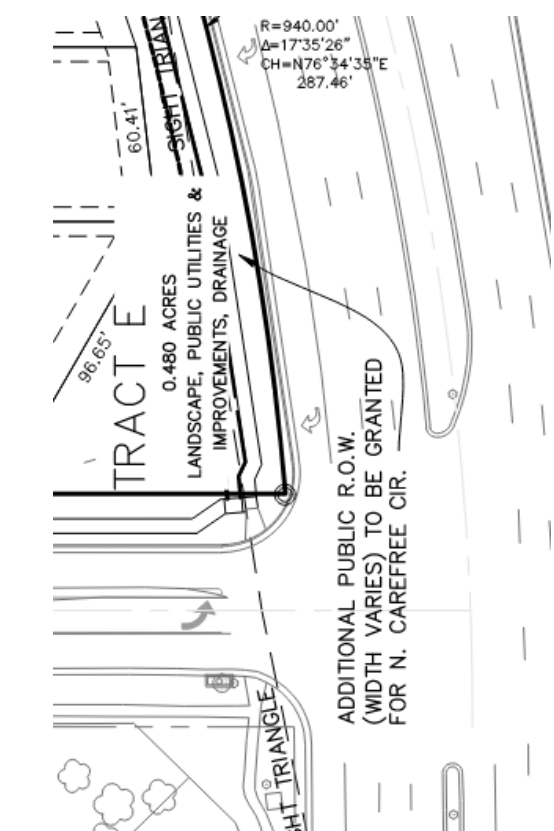
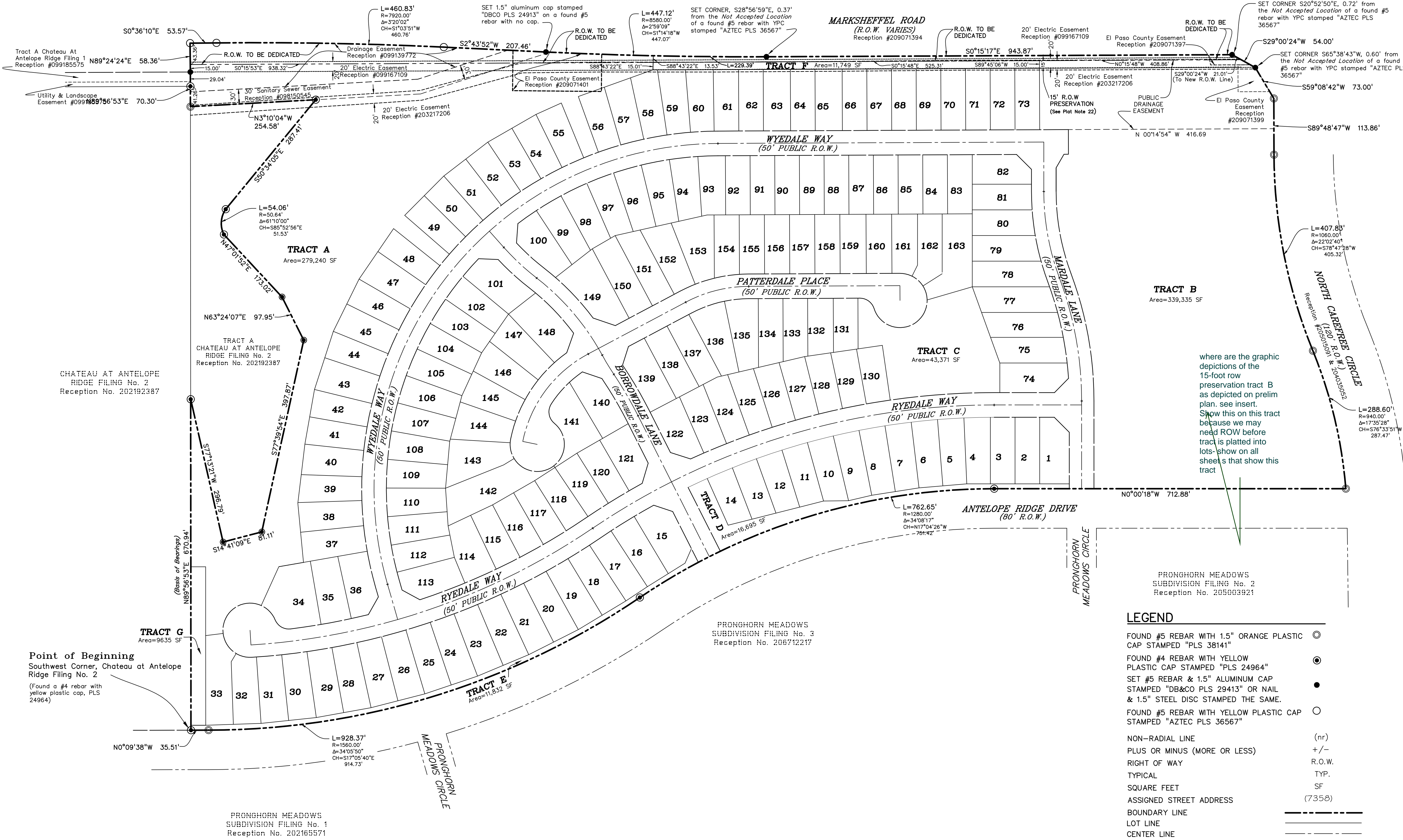


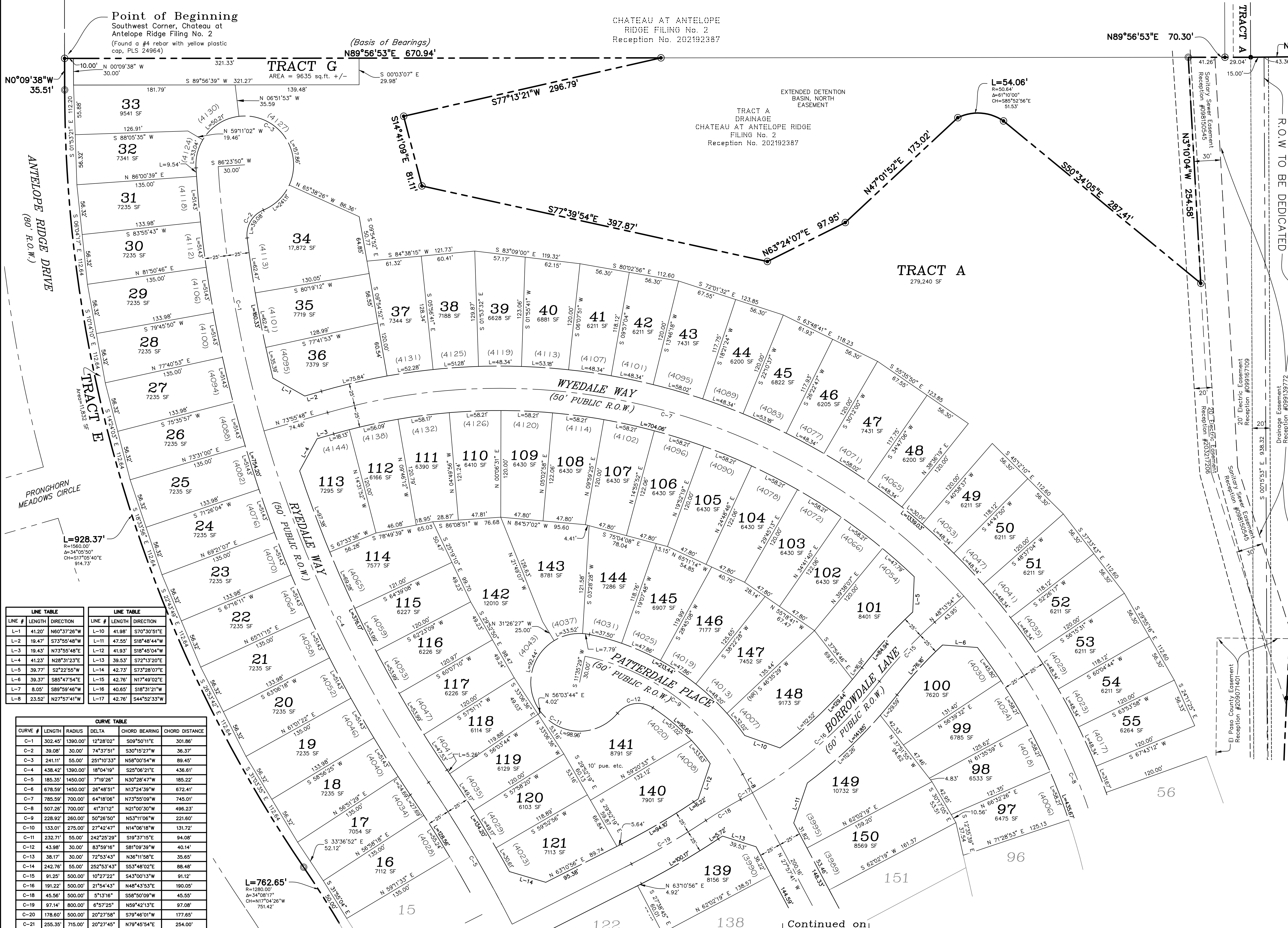
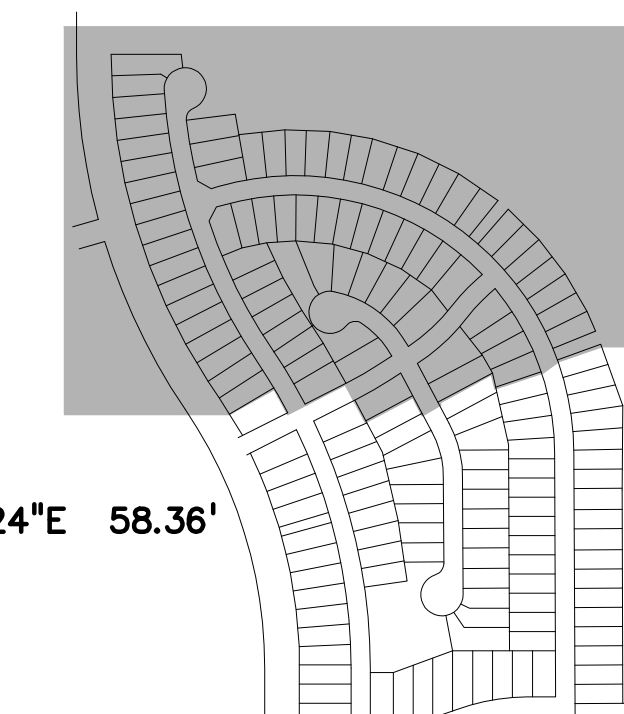
WINDERMERE FILING NO.1

A SUBDIVISION OF LAND LOCATED IN THE EAST 1/2 OF SECTION 29, TOWNSHIP 13 SOUTH, RANGE 65 WEST OF THE SIXTH PRINCIPAL MERIDIAN, COUNTY OF EL PASO, STATE OF COLORADO



WINDERMERE FILING NO.1

A SUBDIVISION OF LAND LOCATED IN THE EAST 1/2 OF SECTION 29, TOWNSHIP 13 SOUTH, RANGE 65 WEST OF THE SIXTH PRINCIPAL MERIDIAN, COUNTY OF EL PASO, STATE OF COLORADO



KEY MAP
50°36'10"E 53.57'

TYPICAL LOT EASEMENTS
REAR PUBLIC UTILITY AND PUBLIC DRAINAGE EASEMENT
SIDE PUBLIC UTILITY AND PUBLIC DRAINAGE EASEMENT
FRONT PUBLIC DRAINAGE AND PUBLIC IMPROVEMENT EASEMENT
FRONT PUBLIC UTILITY AND PUBLIC DRAINAGE EASEMENT

LEGEND

- FOUND #5 REBAR WITH 1.5" ORANGE PLASTIC CAP STAMPED "PLS 3814" (nr)
- FOUND #4 REBAR WITH YELLOW PLASTIC CAP STAMPED "PLS 24964" (r)
- SET #5 REBAR & 1.5" ALUMINUM CAP STAMPED "DB&CO PLS 29413" OR NAIL & 1.5" STEEL DISC STAMPED THE SAME. (r)
- FOUND #5 REBAR WITH YELLOW PLASTIC CAP STAMPED "AZTEC PLS 36567" (r)
- NON-RADIAL LINE (nr)
- PLUS OR MINUS (MORE OR LESS) +/-
- RIGHT OF WAY R.O.W.
- TYPICAL TYP.
- SQUARE FEET SF
- ASSIGNED STREET ADDRESS (7358)
- BOUNDARY LINE
- LOT LINE
- CENTER LINE
- R-O-W LINE
- EASEMENT LINE
- EASEMENT LINE

Set 1.5" aluminum cap stamped "DB&CO PLS 24913" on a found #5 rebar with no cap.

LEGEND

FEBRUARY 9, 2022
DREXEL, BARRELL & CO.
Engineers & Surveyors
3 SOUTH 7TH STREET
COLORADO SPGS, COLORADO 80905
(719) 260-0887 Fax: (719) 260-8352
Job No. 21187-01

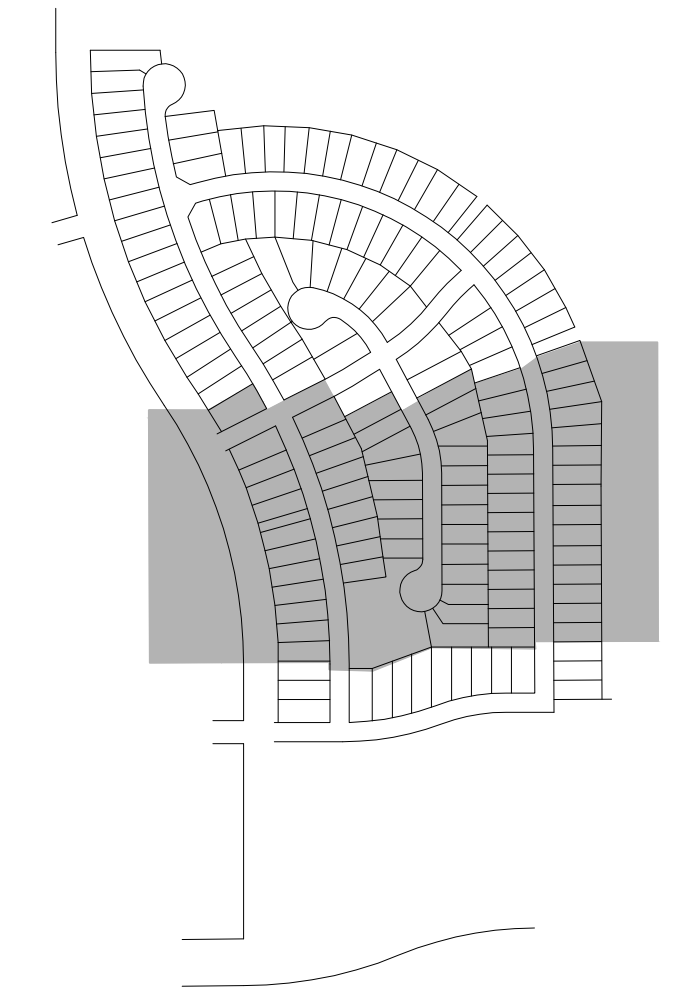
LINE #	LENGTH	DIRECTION	LINE #	LENGTH	DIRECTION
L-1	41.20'	N60°37'28"W	L-10	41.98'	S70°30'51"E
L-2	19.47'	S73°55'48"W	L-11	47.55'	S18°48'44"W
L-3	19.43'	N73°55'48"E	L-12	41.93'	S18°45'04"W
L-4	41.23'	N28°31'23"E	L-13	39.53'	S72°13'20"E
L-5	39.77'	S2°22'55"W	L-14	42.73'	S73°28'07"E
L-6	39.37'	S85°47'54"E	L-15	42.76'	N17°49'02"E
L-7	8.05'	S89°59'46"W	L-16	40.65'	S18°31'21"W
L-8	23.52'	N27°57'41"W	L-17	42.78'	S44°52'33"W

CURVE #	LENGTH	RADIUS	DELTA	CHORD BEARING	CHORD DISTANCE
C-1	302.45'	1390.00'	12°28'02"	S09°50'11"E	301.86'
C-2	39.08'	30.00'	74°37'51"	S30°15'27"W	36.37'
C-3	241.11'	55.00'	251°10'33"	N88°00'54"W	89.45'
C-4	438.42'	1390.00'	18°04'19"	S25°06'21"E	436.61'
C-5	185.35'	1450.00'	7°19'26"	N30°28'47"W	185.22'
C-6	678.59'	1450.00'	26°48'51"	N13°24'39"W	672.41'
C-7	785.59'	700.00'	64°18'06"	N73°55'09"W	745.01'
C-8	507.26'	700.00'	41°31'12"	N21°00'30"W	486.23'
C-9	228.92'	260.00'	50°26'50"	N53°11'06"W	221.60'
C-10	133.01'	275.00'	27°42'47"	N14°06'18"W	131.72'
C-11	232.71'	55.00'	242°25'29"	S19°37'15"E	94.08'
C-12	43.98'	30.00'	83°59'16"	S81°09'39"W	40.14'
C-13	38.17'	30.00'	72°53'43"	N36°11'58"E	35.65'
C-14	242.76'	55.00'	252°53'43"	S53°48'02"E	88.48'
C-15	91.25'	500.00'	10°27'22"	S43°00'13"W	91.12'
C-16	191.22'	500.00'	21°54'43"	N48°43'53"E	190.05'
C-18	45.56'	500.00'	5°13'16"	S58°50'09"W	45.55'
C-19	97.14'	800.00'	6°57'25"	N59°42'13"E	97.08'
C-20	178.60'	500.00'	20°27'58"	S79°46'01"W	177.65'
C-21	255.35'	715.00'	20°27'45"	N79°45'54"E	254.00'

Continued on Sheet 4

WINDERMERE FILING NO.1

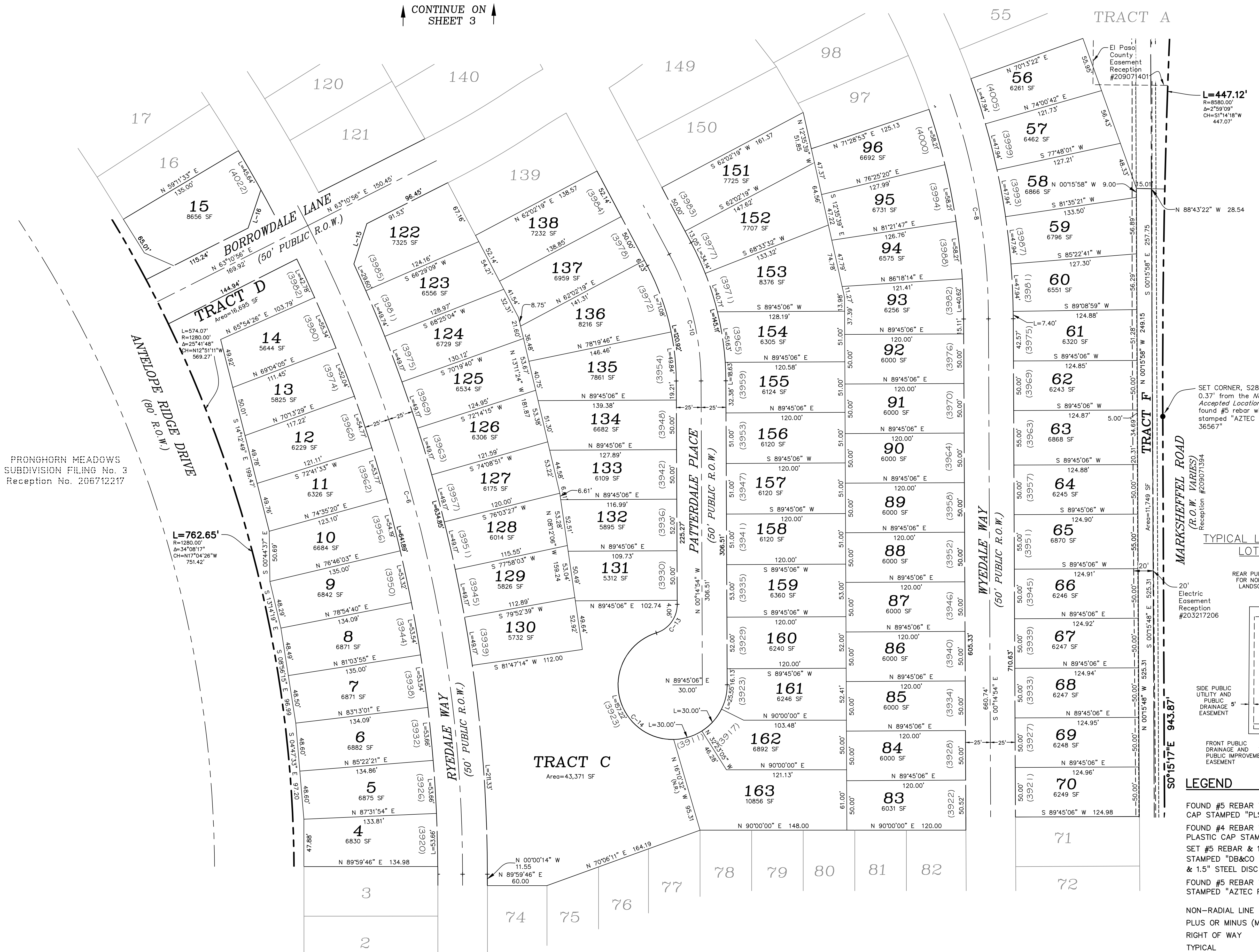
A SUBDIVISION OF LAND LOCATED IN THE EAST 1/2 OF SECTION 29, TOWNSHIP 13 SOUTH, RANGE 65 WEST OF THE SIXTH PRINCIPAL MERIDIAN, COUNTY OF EL PASO, STATE OF COLORADO



KEY MAP

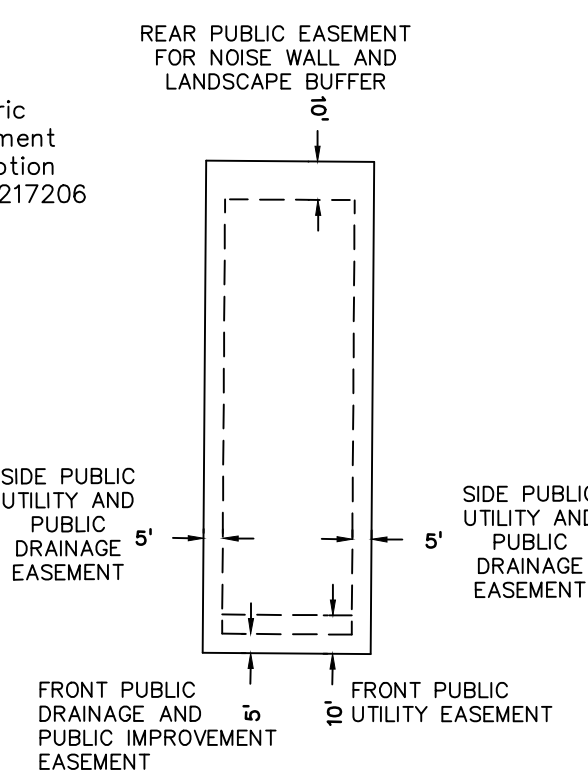
CONTINUE ON SHEET 3

CONTINUE ON SHEET 5

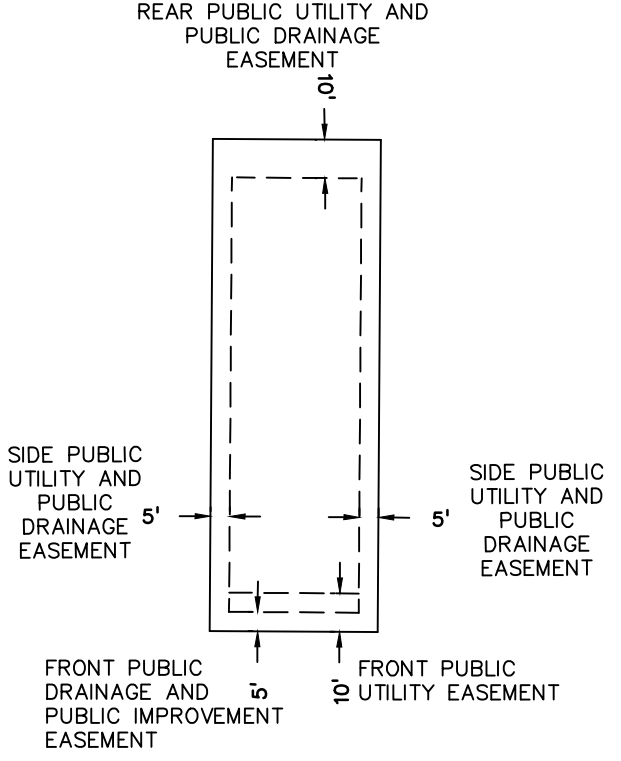


LINE TABLE			CURVE TABLE					
LINE #	LENGTH	DIRECTION	CURVE #	LENGTH	RADIUS	DELTA	CHORD BEARING	CHORD DISTANCE
L-1	41.20'	N60°37'26"W	C-1	302.45'	1390.00'	12°28'02"	S06°50'11"E	301.86'
L-2	19.47'	S73°55'48"W	C-2	39.08'	30.00'	74°37'51"	S30°15'27"W	36.37'
L-3	19.43'	N73°55'48"E	C-3	241.11'	55.00'	251°10'33"	N58°00'54"W	89.45'
L-4	41.23'	N28°31'23"E	C-4	438.42'	1390.00'	18°04'19"	S25°08'21"E	436.61'
L-5	39.77'	S2°22'58"W	C-5	185.35'	1450.00'	7°19'28"	N30°28'47"W	185.22'
L-6	39.37'	S85°47'54"E	C-6	678.59'	1450.00'	26°48'51"	N13°24'39"W	672.41'
L-7	8.05'	S89°59'46"W	C-7	785.59'	700.00'	64°18'06"	N73°55'09"W	745.01'
L-8	23.52'	N27°57'41"W	C-8	507.28'	700.00'	41°31'12"	N21°00'30"W	496.23'
L-9	228.92'	265.00'	C-9	228.92'	265.00'	50°26'50"	N53°11'06"W	221.60'
L-10	133.01'	275.00'	C-10	133.01'	275.00'	27°42'47"	N14°06'18"W	131.72'
L-11	232.71'	55.00'	C-11	232.71'	55.00'	242°25'29"	S19°37'15"E	94.08'
L-12	43.98'	30.00'	C-12	43.98'	30.00'	83°59'16"	S81°09'39"W	40.14'
L-13	38.17'	30.00'	C-13	38.17'	30.00'	72°53'43"	N36°11'58"E	35.65'
L-14	242.76'	55.00'	C-14	242.76'	55.00'	252°53'43"	S53°48'02"E	88.48'
L-15	91.25'	500.00'	C-15	91.25'	500.00'	10°27'22"	S43°00'13"W	91.12'
L-16	42.76'	500.00'	C-16	191.22'	500.00'	21°54'43"	N48°43'53"E	190.05'
L-17	42.76'	500.00'	C-17	45.56'	500.00'	5°13'16"	S58°50'09"W	45.55'
L-18	40.65'	500.00'	C-18	19.22'	500.00'	6°57'25"	N59°42'13"E	97.08'
L-19	42.76'	500.00'	C-19	178.60'	500.00'	20°27'58"	S79°46'01"W	177.65'
L-20	255.35'	715.00'	C-20	255.35'	715.00'	20°27'45"	N79°45'54"E	254.00'

TYPICAL LOT EASEMENTS LOTS 58-73

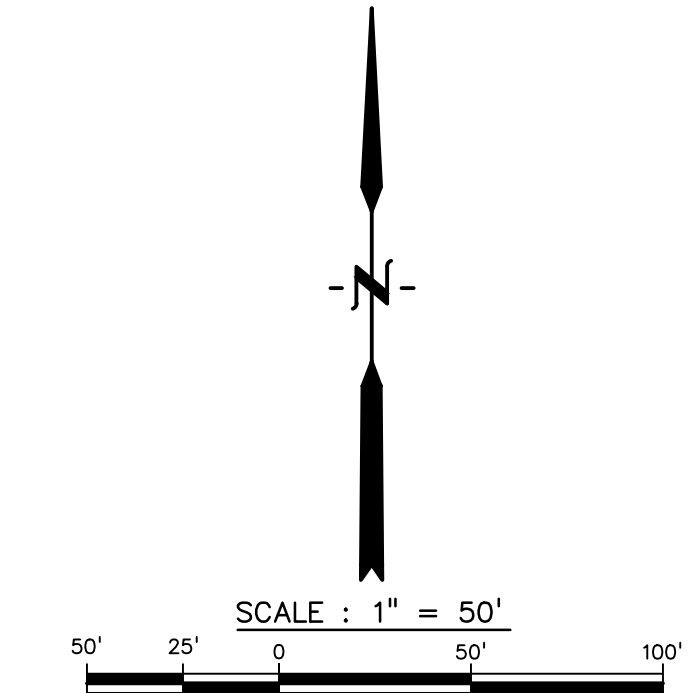


TYPICAL LOT EASEMENTS



LEGEND

- FOUND #5 REBAR WITH 1.5" ORANGE PLASTIC CAP STAMPED "PLS 38141" ⊙
- FOUND #4 REBAR WITH YELLOW PLASTIC CAP STAMPED "PLS 24964" ⊙
- SET #5 REBAR & 1.5" ALUMINUM CAP STAMPED "DB&CO PLS 29413" OR NAIL & 1.5" STEEL DISC STAMPED THE SAME. ●
- FOUND #5 REBAR WITH YELLOW PLASTIC CAP STAMPED "AZTEC PLS 36567" ○
- NON-RADIAL LINE (nr)
- PLUS OR MINUS (MORE OR LESS) +/-
- RIGHT OF WAY R.O.W.
- TYPICAL TYP.
- SQUARE FEET SF
- ASSIGNED STREET ADDRESS (7358)
- BOUNDARY LINE ---
- LOT LINE ---
- CENTER LINE ---
- R-O-W LINE ---
- EASEMENT LINE ---
- EASEMENT LINE ---



FEBRUARY 9, 2022 Sheet 4 of 5

DREXEL, BARRELL & CO.
Engineers-Surveyors
3 SOUTH 7TH STREET
COLORADO SPGS, COLORADO 80905
(719) 260-0887 Fax: (719) 260-8352
Job No. 21187-01

PRONGHORN MEADOWS
SUBDIVISION FILING No. 3
Reception No. 206712217

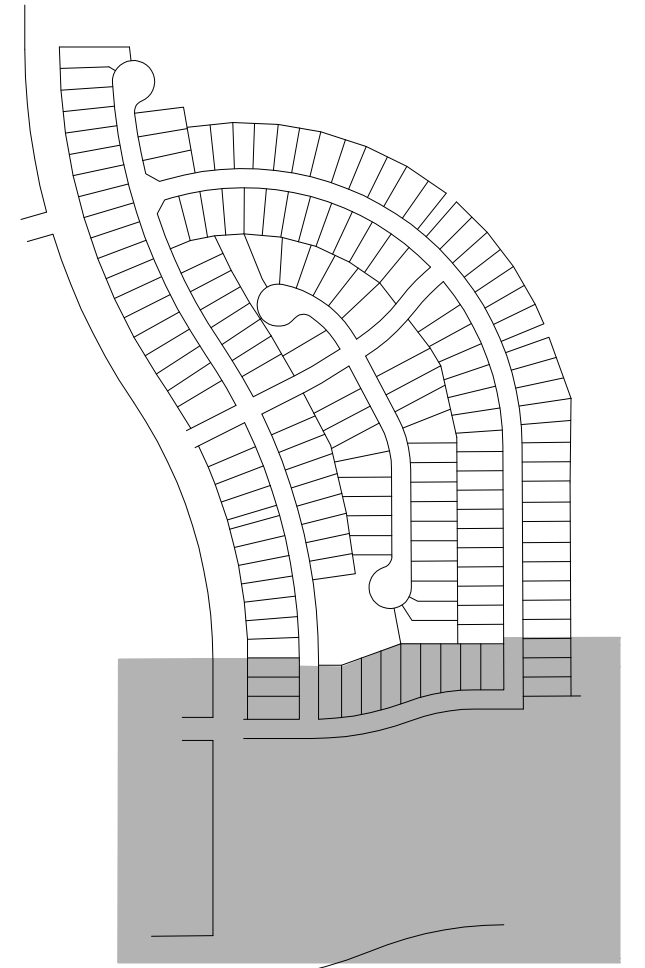
SET CORNER, S28°56'59"E,
0.37' from the Not
Accepted Location of a
found #5 rebar with VPC
stamped "AZTEC PLS
36567"

L=447.12'
R=8580.00'
Δ=2°59'09"
Ch=51°14'18"W
447.07'

L=762.65'
R=1280.00'
Δ=34°08'19"
Ch=N17°04'26"W
751.42'

WINDERMERE FILING NO.1

A SUBDIVISION OF LAND LOCATED IN THE EAST 1/2 OF SECTION 29, TOWNSHIP 13 SOUTH, RANGE 65 WEST OF THE SIXTH PRINCIPAL MERIDIAN, COUNTY OF EL PASO, STATE OF COLORADO



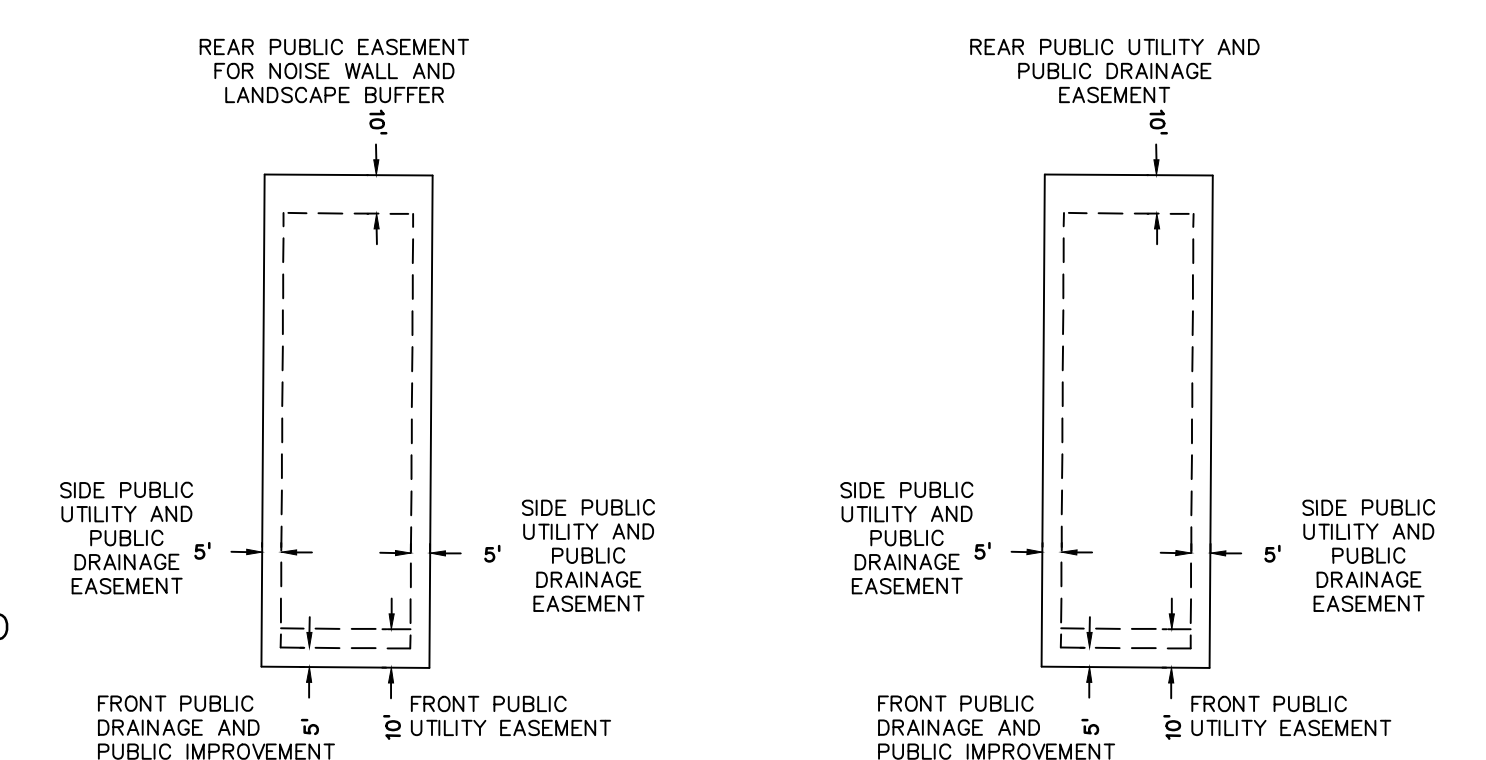
KEY MAP

LINE #	LENGTH	DIRECTION
L-1	41.20'	N60°37'26"W
L-2	19.47'	S73°55'48"W
L-3	19.43'	N73°55'48"E
L-4	41.23'	N28°31'23"E
L-5	39.77'	S2°22'55"W
L-6	39.37'	S85°47'54"E
L-7	8.05'	S89°59'46"W
L-8	23.52'	N27°57'41"W

CURVE #	LENGTH	RADIUS	DELTA	CHORD BEARING	CHORD DISTANCE
C-1	302.45'	1390.00'	12°28'02"	S09°50'11"E	301.86'
C-2	39.08'	30.00'	74°37'51"	S30°15'27"W	36.37'
C-3	241.11'	55.00'	251°10'33"	N58°00'54"W	89.45'
C-4	436.42'	1390.00'	18°04'19"	S25°06'21"E	436.21'
C-5	185.35'	1450.00'	7°19'26"	N30°28'47"W	185.22'
C-6	678.59'	1450.00'	26°48'51"	N13°24'39"W	672.41'
C-7	785.59'	700.00'	64°18'06"	N73°55'09"W	745.01'
C-8	507.26'	700.00'	41°31'12"	N21°00'30"W	496.23'
C-9	228.92'	260.00'	50°26'50"	N53°11'06"W	221.60'
C-10	133.01'	275.00'	27°42'47"	N14°06'18"W	131.72'
C-11	232.71'	55.00'	242°25'29"	S19°37'15"E	94.08'
C-12	43.98'	30.00'	83°59'16"	S81°09'39"W	40.14'
C-13	38.17'	30.00'	72°53'43"	N36°11'58"E	35.65'
C-14	242.76'	55.00'	252°53'43"	S53°48'02"E	88.48'
C-15	91.25'	500.00'	10°27'22"	S43°00'13"W	91.12'
C-16	191.22'	500.00'	21°54'43"	N48°43'53"E	190.05'
C-18	45.56'	500.00'	5°13'16"	S58°50'09"W	45.55'
C-19	97.14'	800.00'	6°57'25"	N59°42'13"E	97.08'
C-20	178.60'	500.00'	20°27'58"	S79°46'01"W	177.65'
C-21	255.35'	715.00'	20°27'45"	N76°45'54"E	254.00'

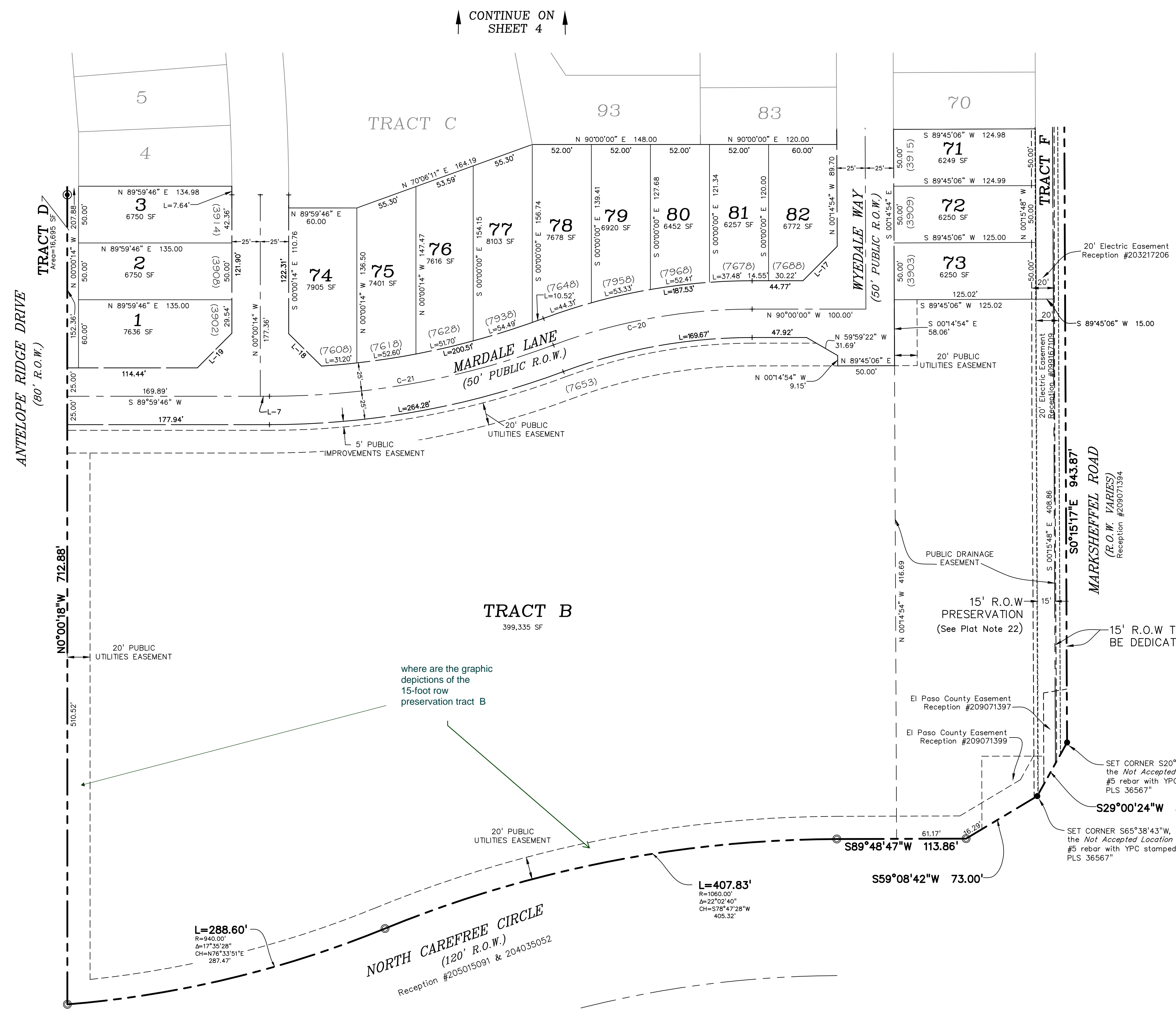
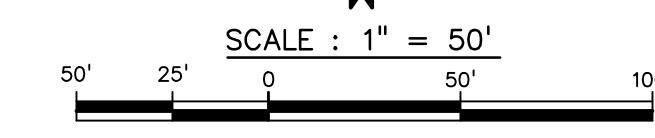
TYPICAL LOT EASEMENTS LOTS 58-73

TYPICAL LOT EASEMENTS



LEGEND

- FOUND #5 REBAR WITH 1.5" ORANGE PLASTIC CAP STAMPED "PLS 38141"
- FOUND #4 REBAR WITH YELLOW PLASTIC CAP STAMPED "PLS 24964"
- SET #5 REBAR & 1.5" ALUMINUM CAP STAMPED "DB&CO PLS 29413" OR NAIL & 1.5" STEEL DISC STAMPED THE SAME.
- FOUND #5 REBAR WITH YELLOW PLASTIC CAP STAMPED "AZTEC PLS 36567"
- NON-RADIAL LINE (nr)
- PLUS OR MINUS (MORE OR LESS) +/-
- RIGHT OF WAY R.O.W.
- TYPICAL TYP.
- SQUARE FEET SF
- ASSIGNED STREET ADDRESS (7358)
- BOUNDARY LINE
- LOT LINE
- CENTER LINE
- R-O-W LINE
- EASEMENT LINE



CONTINUE ON SHEET 4

PRONGHORN MEADOWS SUBDIVISION FILING No. 2 Reception No. 205003921

where are the graphic depictions of the 15-foot row preservation tract B

15' R.O.W. PRESERVATION (See Plat Note 22)

15' R.O.W. TO BE DEDICATED

SET CORNER S20°52'50"E, 0.72' from the Not Accepted Location of a found #5 rebar with YPC stamped "AZTEC PLS 36567"

SET CORNER S65°38'43"W, 0.60' from the Not Accepted Location of a found #5 rebar with YPC stamped "AZTEC PLS 36567"

L=288.60'
 R=940.00'
 Δ=17°35'28"
 Ch=N76°33'51"E
 287.47'

L=407.83'
 R=1060.00'
 Δ=22°02'40"
 Ch=S78°47'28"W
 405.32'

NORTH CAREFREE CIRCLE
 (120' R.O.W.)
 Reception #205015091 & 204035052