

PREPARED BY:

DREXEL, BARRELL & CO.
 Engineers • Surveyors
 3 SOUTH 7TH STREET
 COLORADO SPGS, COLORADO 80905
 CONTACT: TIM D. MCCONNELL, P.E.
 (719)260-0887
 BOULDER • COLORADO SPRINGS • GREELEY

CLIENT:

THE LANDHUIS COMPANY
 212 N. WAHSATCH AVE., #301
 COLORADO SPRINGS, CO 80903
 (719) 635-3200
 CONTACT: JEFF MARK

**WINDERMERE
 GRADING & EROSION CONTROL**
 N. MARKSHEFFEL ROAD
 EL PASO COUNTY, COLORADO

ISSUE	DATE
INITIAL ISSUE	2/21/19
LATEST ISSUE	2/7/22

DESIGNED BY:	GES
DRAWN BY:	GES
CHECKED BY:	TDM
FILE NAME:	21187-01EC3

PREPARED UNDER MY DIRECT SUPERVISION FOR AND ON BEHALF OF DREXEL, BARRELL & CO.



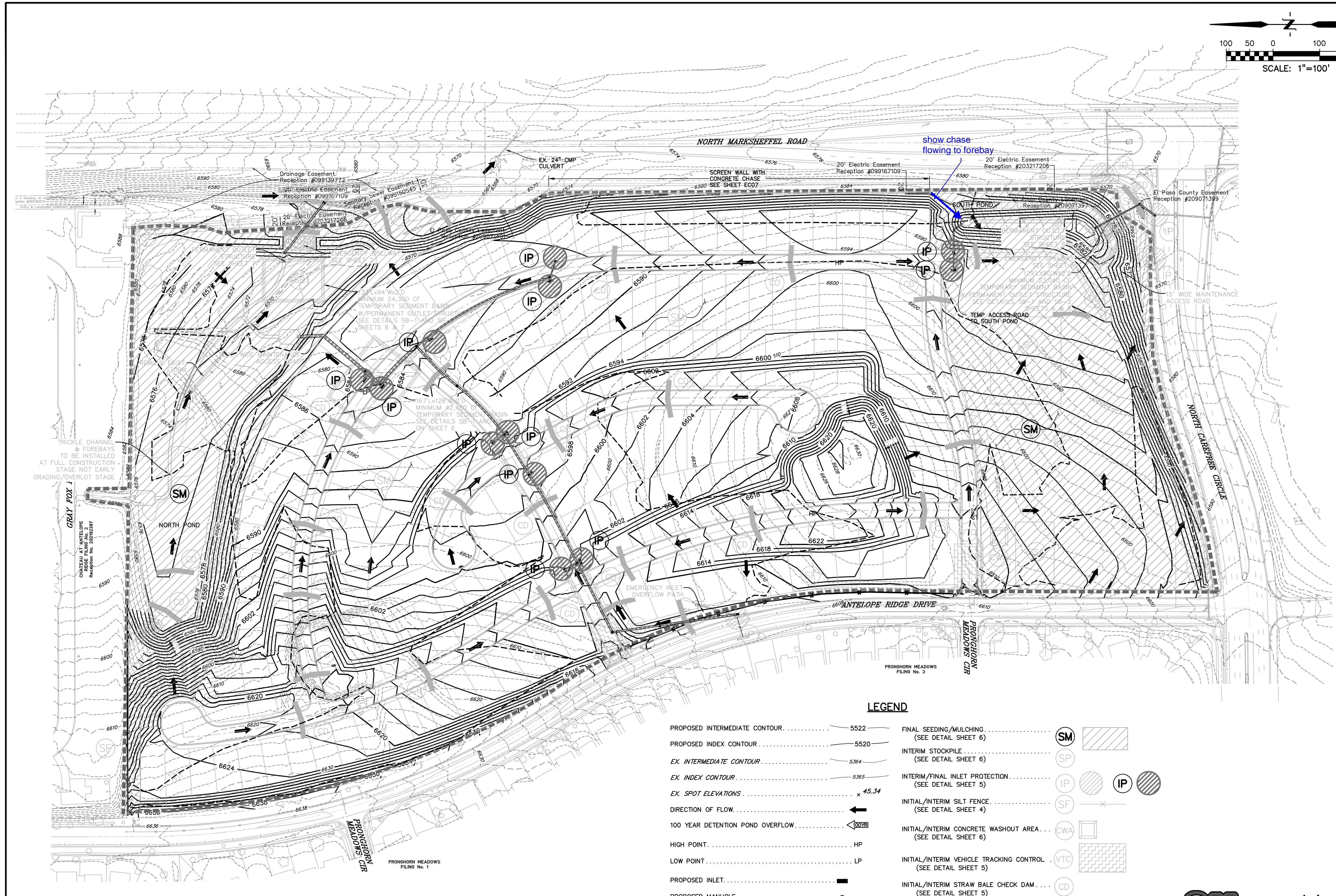
DRAWING SCALE:
 HORIZONTAL: 1" = 100'
 VERTICAL: N/A

**FINAL
 EROSION CONTROL
 PLAN**

PROJECT NO. 21187-01CSCV
 DRAWING NO.

EC04

SHEET: 4 OF 10



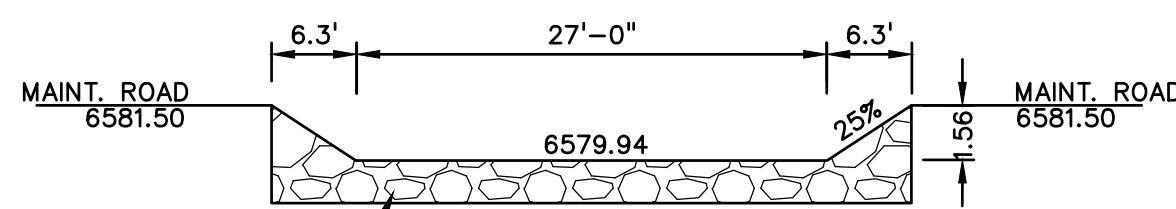
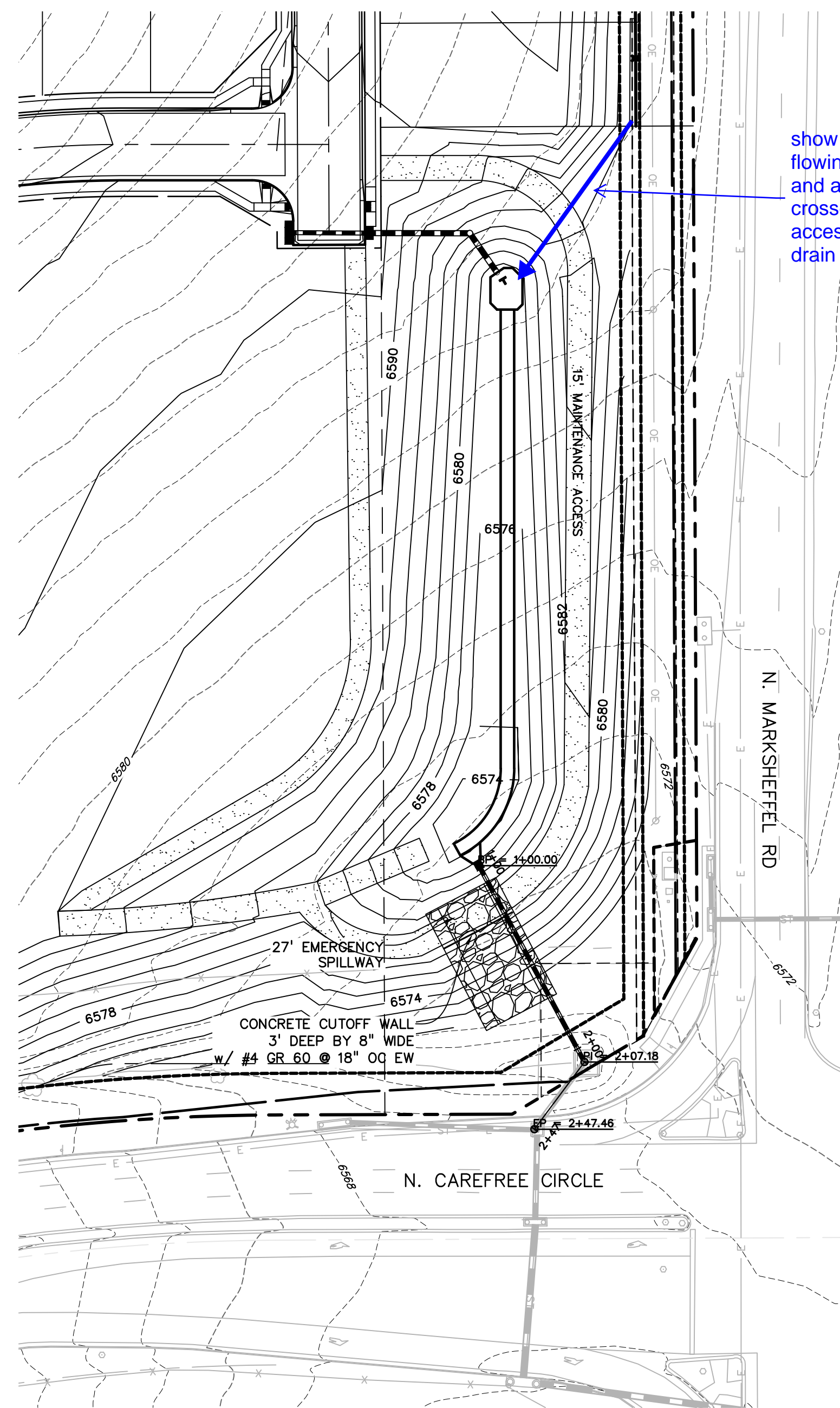
LEGEND

PROPOSED INTERMEDIATE CONTOUR	5522	FINAL SEEDING/MULCHING	
PROPOSED INDEX CONTOUR	5520	(SEE DETAIL SHEET 6)	
EX. INTERMEDIATE CONTOUR	5364	INTERIM STOCKPILE	
EX. INDEX CONTOUR	5365	(SEE DETAIL SHEET 6)	
EX. SPOT ELEVATIONS	x 45.34	INTERIM/FINAL INLET PROTECTION	
DIRECTION OF FLOW		(SEE DETAIL SHEET 5)	
100 YEAR DETENTION POND OVERFLOW		INITIAL/INTERIM SILT FENCE	
HIGH POINT	HP	(SEE DETAIL SHEET 4)	
LOW POINT	LP	INITIAL/INTERIM CONCRETE WASHOUT AREA	
PROPOSED INLET		(SEE DETAIL SHEET 6)	
PROPOSED MANHOLE		INITIAL/INTERIM VEHICLE TRACKING CONTROL	
LIMITS OF DISTURBANCE/ CONSTRUCTION SITE BOUNDARY		(SEE DETAIL SHEET 5)	
CUT/FILL LINE		INITIAL/INTERIM STRAW BALE CHECK DAM	
		(SEE DETAIL SHEET 5)	
		INITIAL/INTERIM STABILIZED STAGING AREA	
		(SEE DETAIL SHEET 6)	
		INITIAL/INTERIM TEMPORARY SEDIMENT BASIN	
		(SEE DETAIL SHEET 7)	

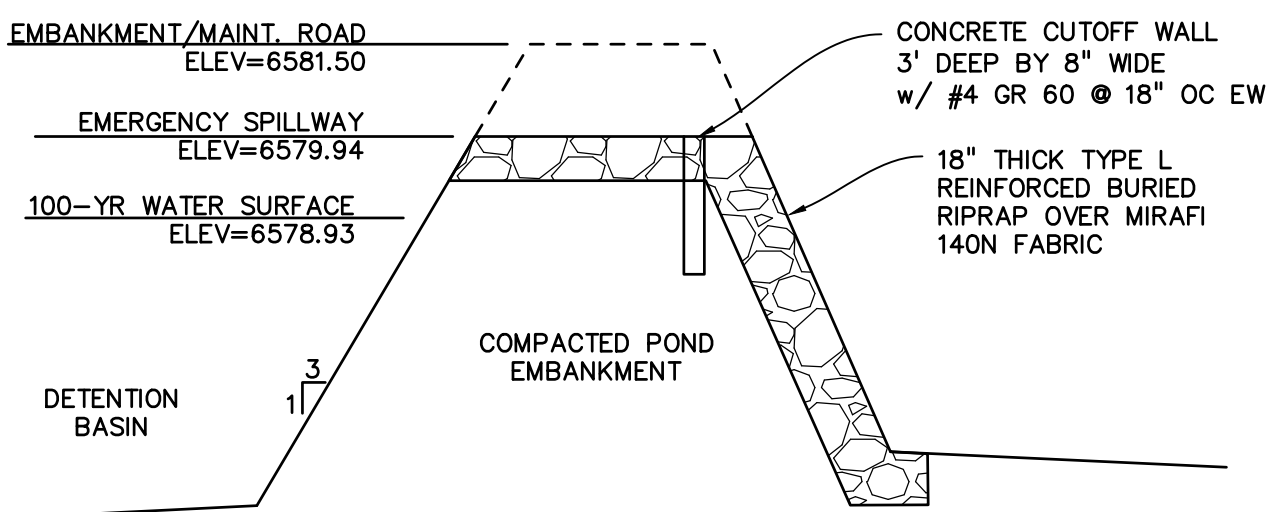
- NOTES:
1. WASTE DISPOSAL BIN LOCATIONS ARE TBD AND WILL BE ADDED TO THE SWMP ONCE DETERMINED BY THE CONTRACTOR.
 2. ONSITE LOCATION OF THE SWMP IS TBD AND WILL BE ADDED TO THE SWMP ONCE DETERMINED BY THE CONTRACTOR.
 3. THE NEED FOR DEWATERING IS NOT ANTICIPATED. IN THE EVENT THAT DEWATERING BECOMES NECESSARY THE CONTRACTOR, WITH INPUT FROM THE COUNTY STORMWATER INSPECTOR, WILL DESIGN THE LOCATIONS OF DIVERSION, PUMP & DISCHARGES.

811 Know what's below.
 Call before you dig.
 CALL 3-BUSINESS DAYS IN ADVANCE BEFORE YOU DIG, GRADE, OR EXCAVATE FOR THE MARKING OF UNDERGROUND MEMBER UTILITIES.

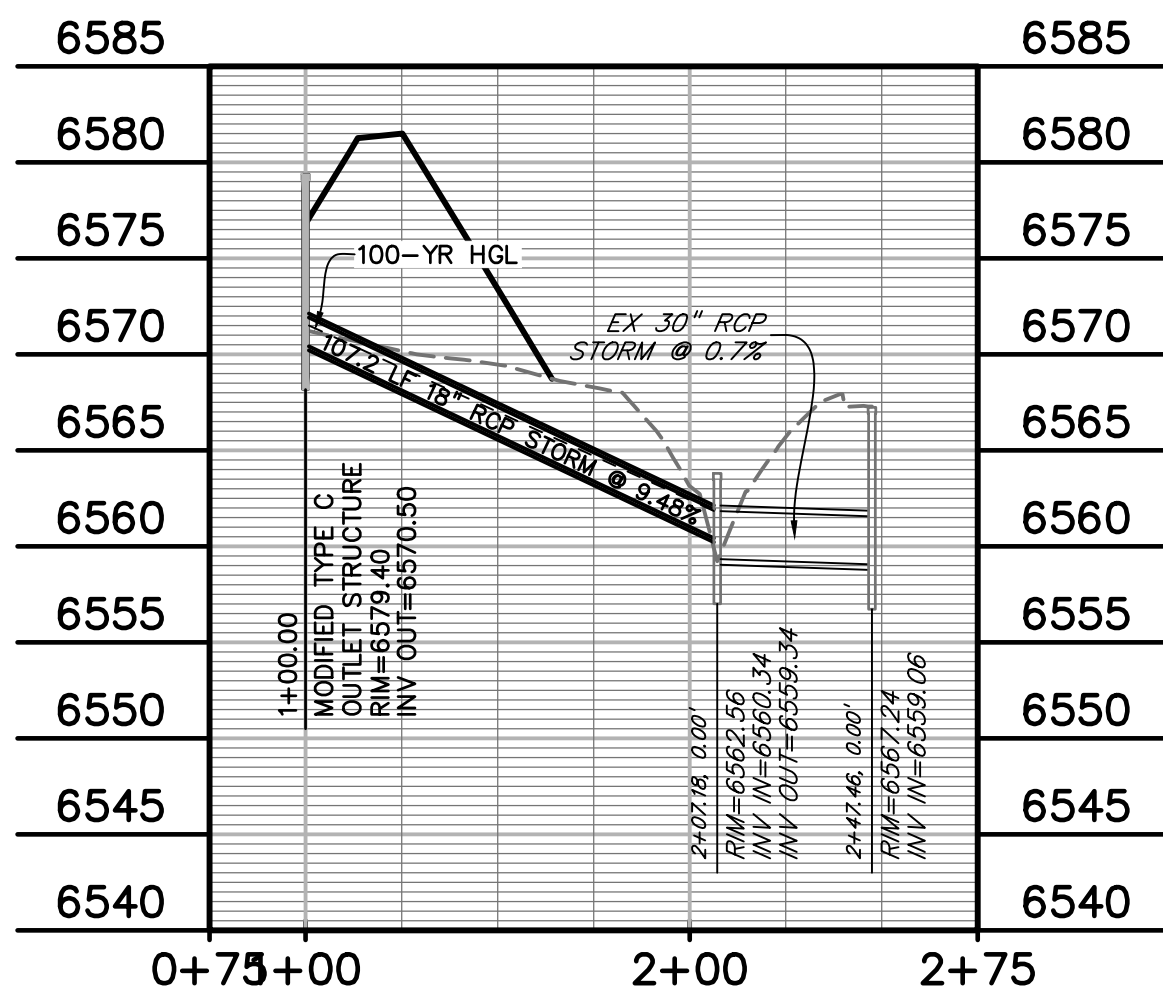
COUNTY FILE NO.: SF2126



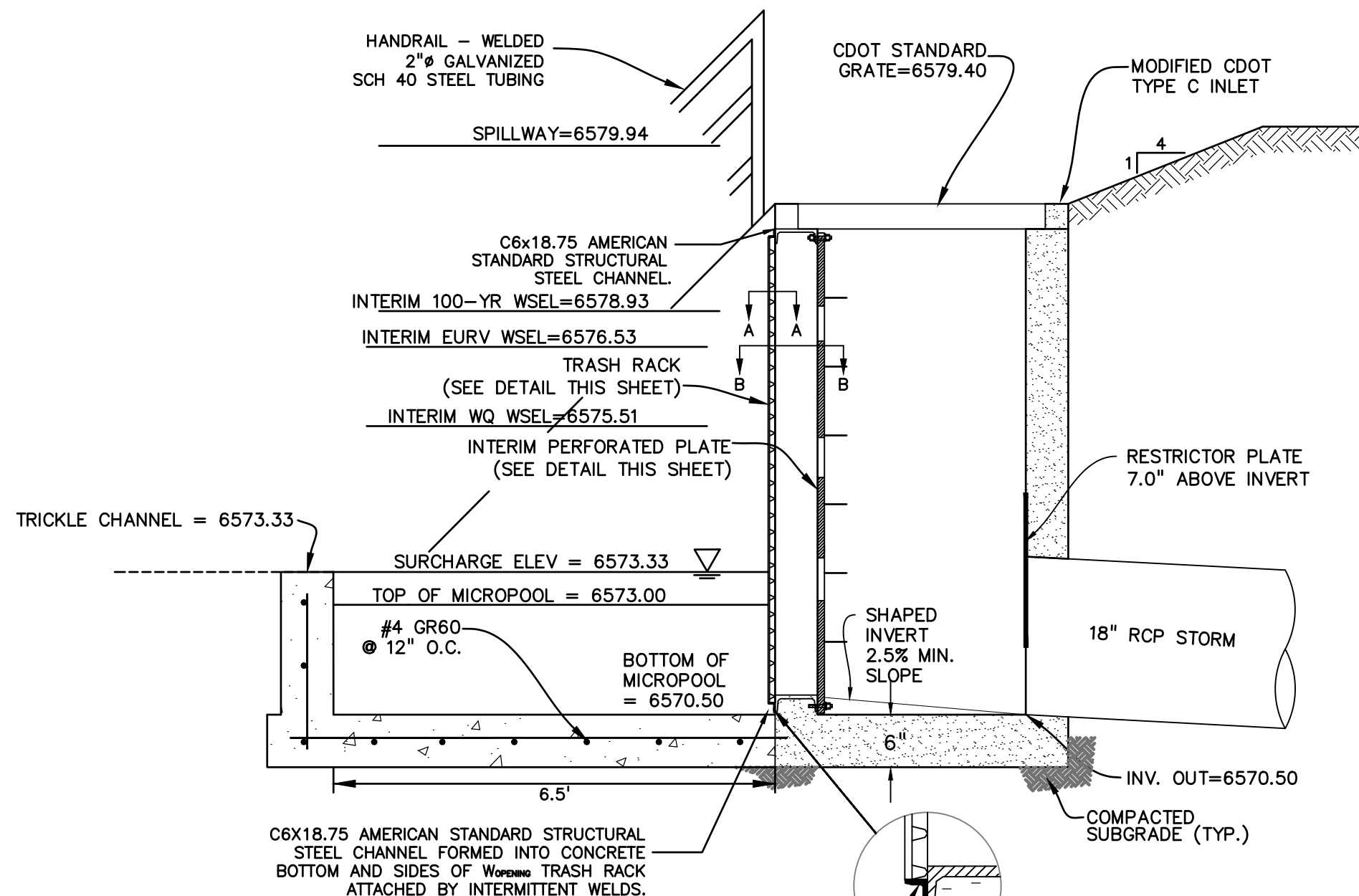
SPILLWAY SECTION
NO SCALE



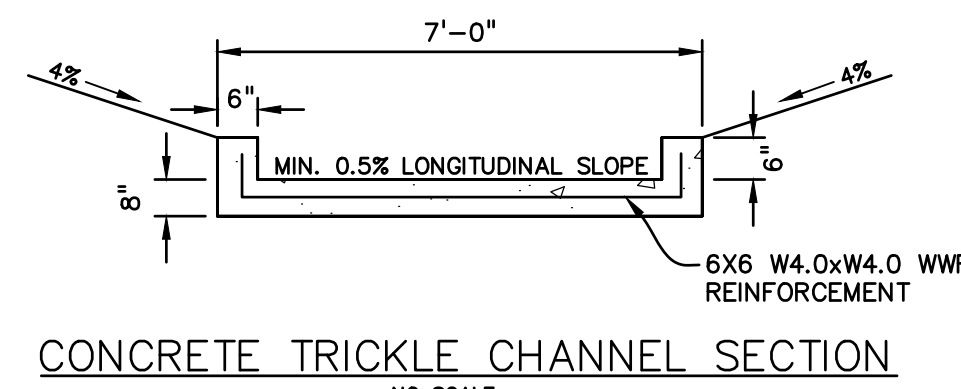
SPILLWAY SECTION
NO SCALE



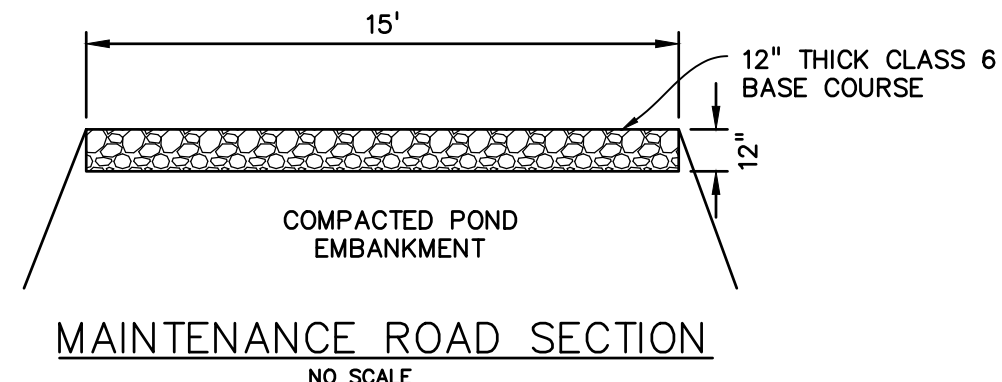
OUTLET PROFILE
SCALE: 1"=50'



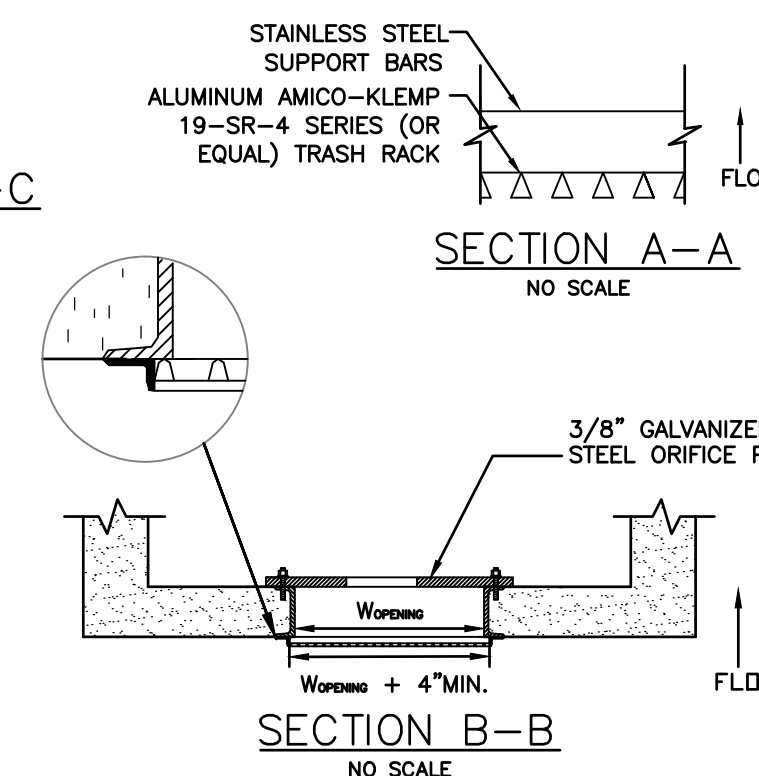
POND OUTLET PROFILE SECTION C-C
NO SCALE



CONCRETE TRICKLE CHANNEL SECTION
NO SCALE



MAINTENANCE ROAD SECTION
NO SCALE



SECTION A-A
NO SCALE

SECTION B-B
NO SCALE

PERFORATED PLATE NOTES:

1. PROVIDE GASKET MATERIAL OR CAULK BETWEEN THE ORIFICE PLATE AND CONCRETE.
2. BOLT PLATE TO CONCRETE @ 12" MAX. ON CENTER. ORIFICE PLATE IS TO BE REMOVABLE.
3. ALL STEEL SURFACES ARE TO BE COATED WITH ZRC COLD GALVANIZING COMPOUND.

WQCV TRASH RACKS:

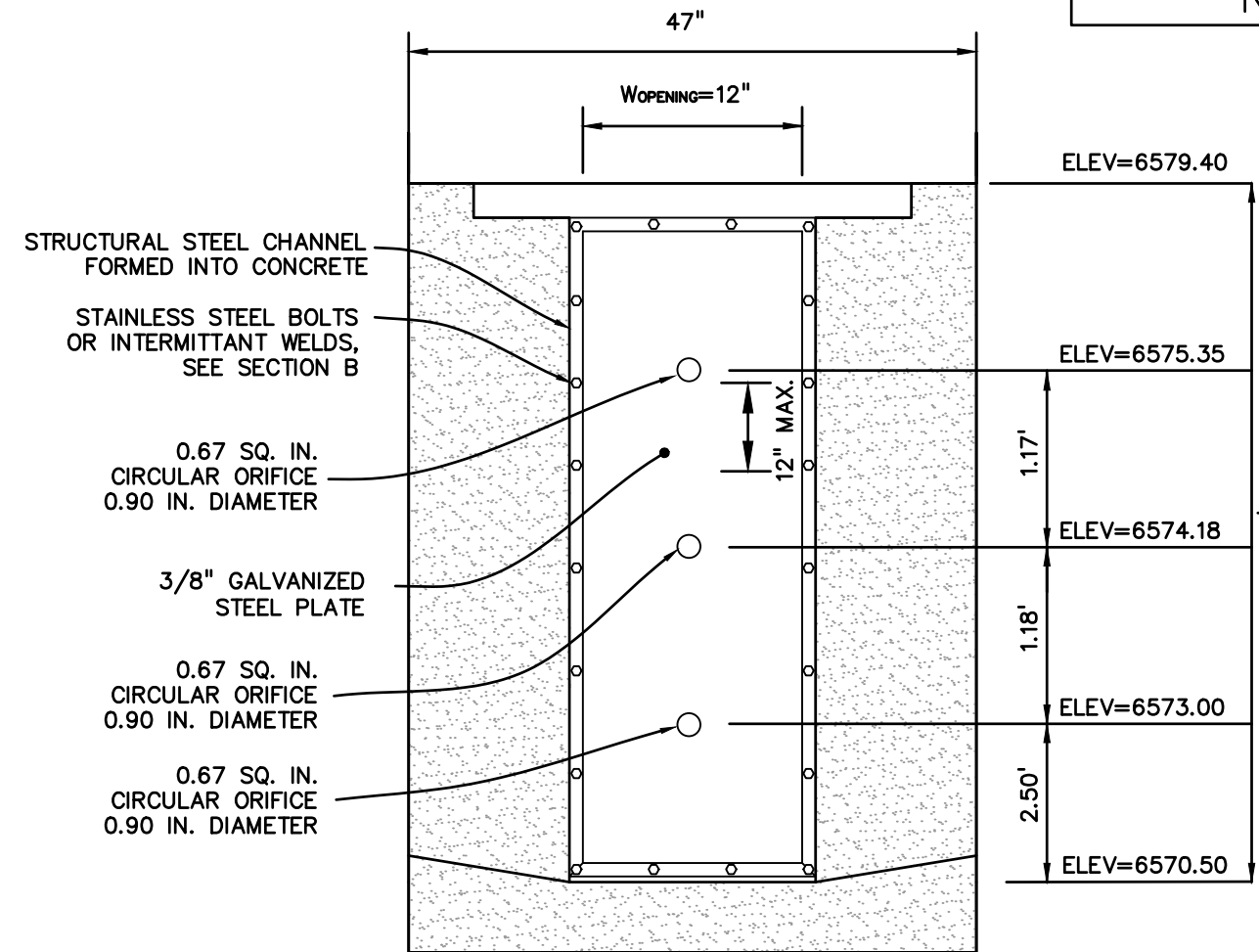
1. TRASH RACKS SHALL BE STAINLESS STEEL OR ALUMINUM AND SHALL BE ATTACHED BY INTERMITTENT WELDS ALONG THE EDGE OF THE MOUNTING FRAME.

GENERAL NOTES:

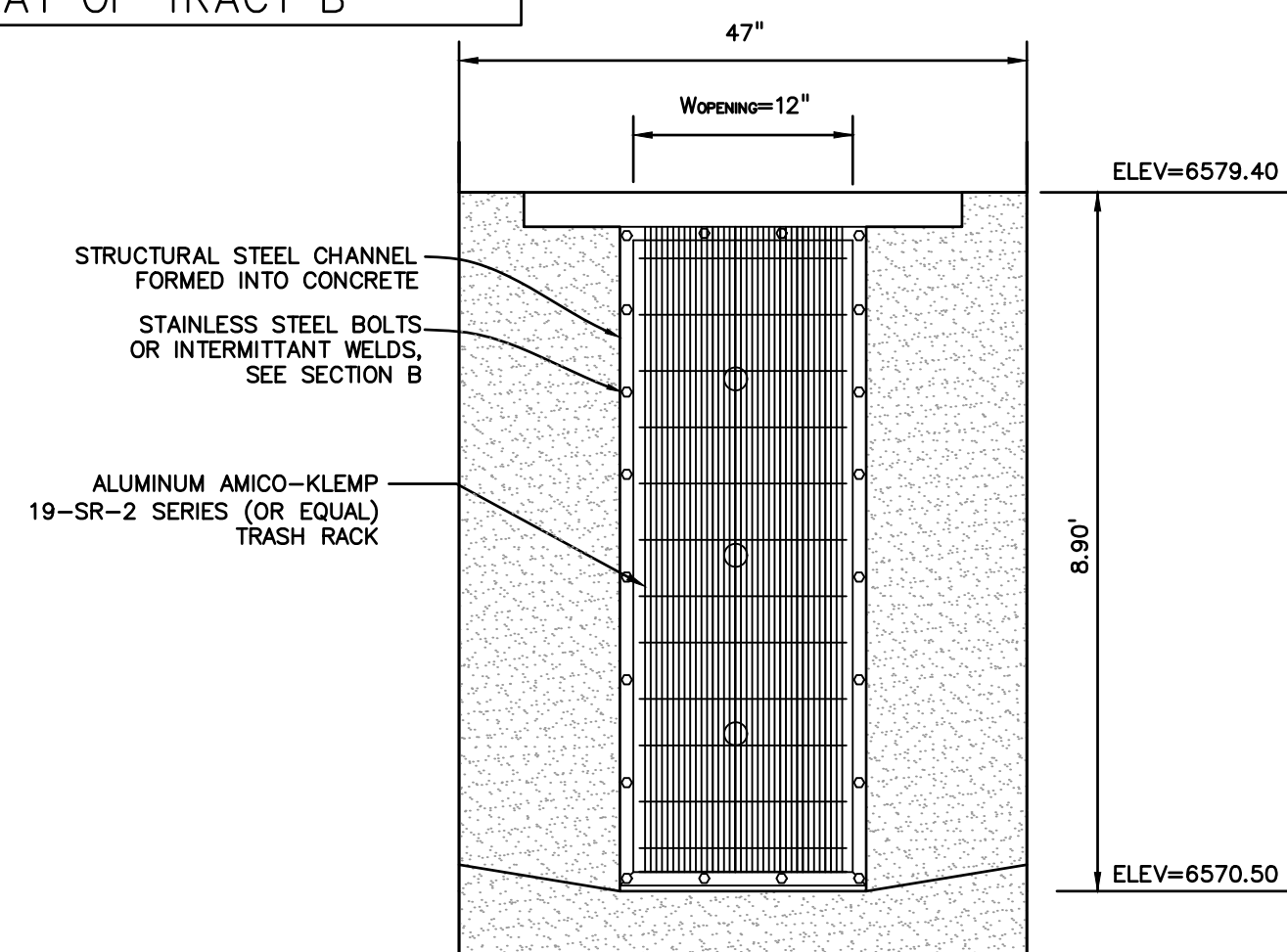
1. ALL EXTERIOR STEEL SHALL BE EITHER STAINLESS OR HOT DIPPED GALVANIZED

SOUTH POND PLAN VIEW
SCALE: 1"=50'

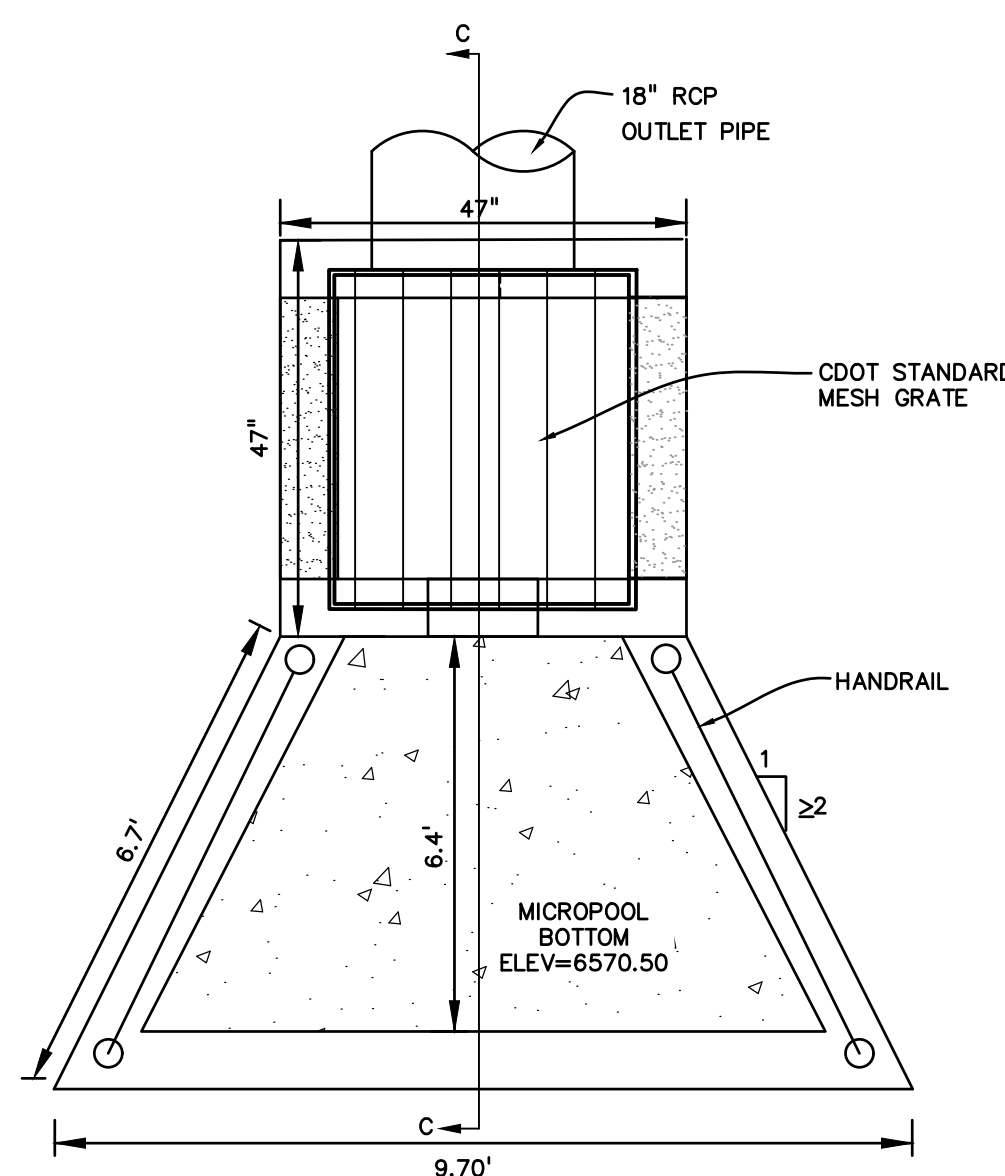
INTERIM OUTLET PLATE TO REMAIN UNTIL FINAL DESIGN FOR REPLAT OF TRACT B



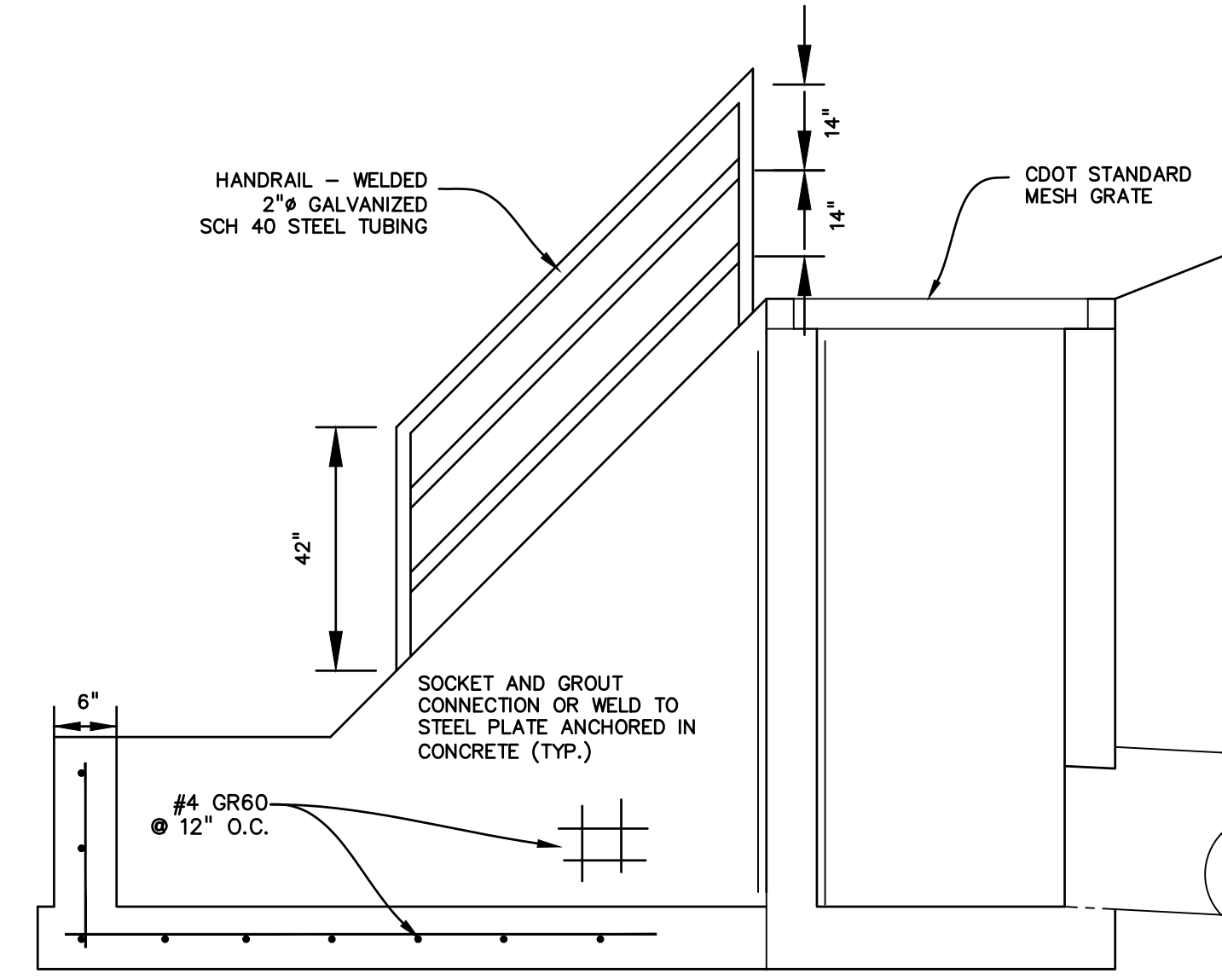
ELEVATION
INTERIM PERFORATED PLATE DETAIL
NO SCALE



ELEVATION
TRASH RACK
NO SCALE



MICROPOOL PLAN
NO SCALE



SECTION C-C
NO SCALE

PREPARED BY:

DREXEL, BARRELL & CO.
Engineers • Surveyors
3 SOUTH 7TH STREET
COLORADO SPGS, COLORADO 80905
CONTACT: TIM D. MCCONNELL, P.E.
(719)260-0887
BOULDER • COLORADO SPRINGS • GREELEY

CLIENT:

THE LANDHUIS COMPANY
212 N. WAHSATCH AVE., #301
COLORADO SPRINGS, CO 80903
(719) 635-3200
CONTACT: JEFF MARK

WINDERMERE
GRADING & EROSION CONTROL
N. MARKSHEFFEL ROAD
EL PASO COUNTY, COLORADO

ISSUE	DATE
INITIAL ISSUE	2/21/19
LATEST ISSUE	2/7/22

DESIGNED BY: KGV
DRAWN BY: KGV
CHECKED BY: TDM
FILE NAME: 21187-01PND1

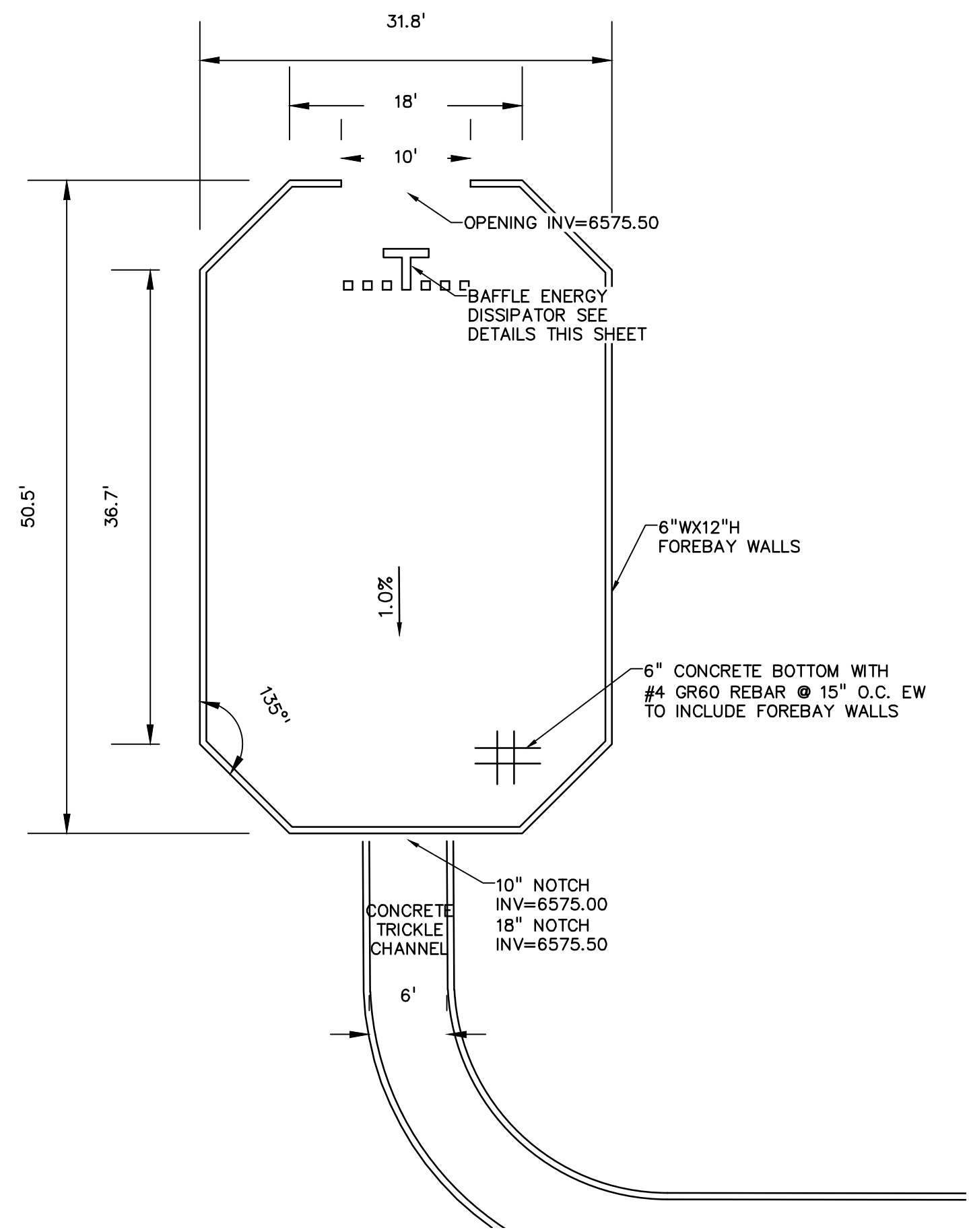
PREPARED UNDER MY DIRECT SUPERVISION FOR AND ON BEHALF OF DREXEL, BARRELL & CO.



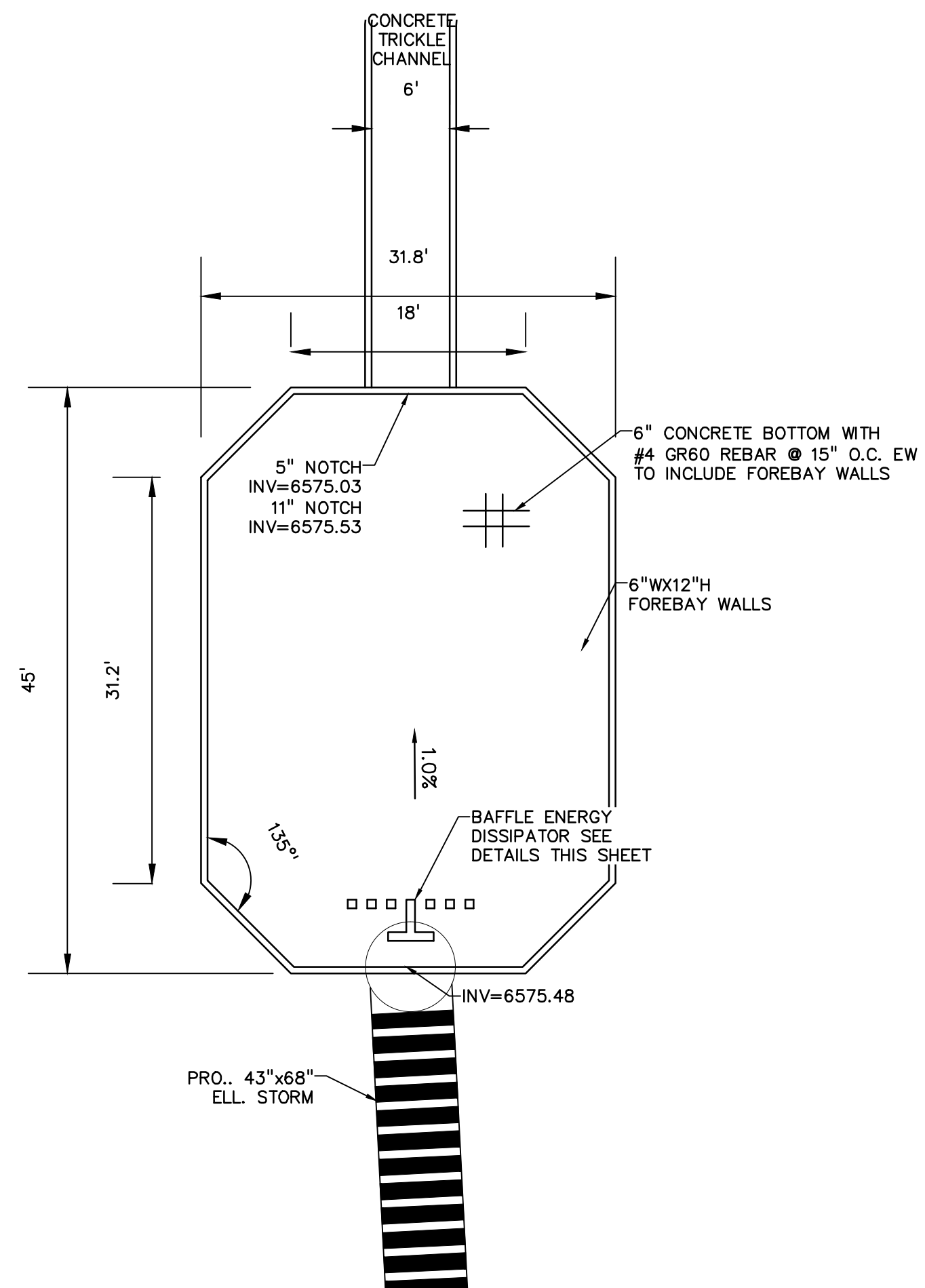
DRAWING SCALE:
HORIZONTAL: N/A
VERTICAL: N/A

SOUTH POND
INTERIM
OUTLET DETAILS
PROJECT NO. 21187-01CSCV
DRAWING NO.

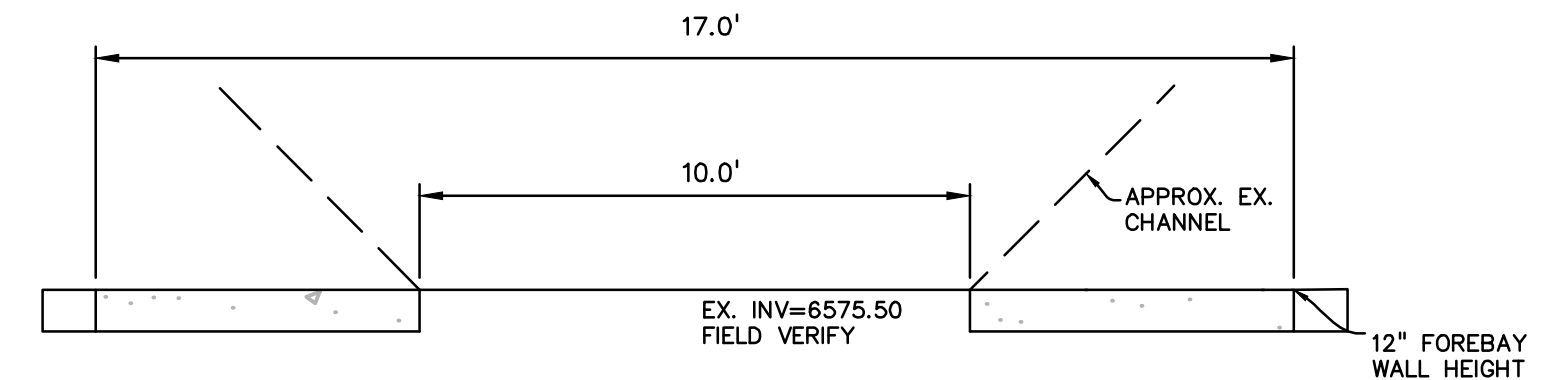
PD-2
SHEET: 9 OF 10



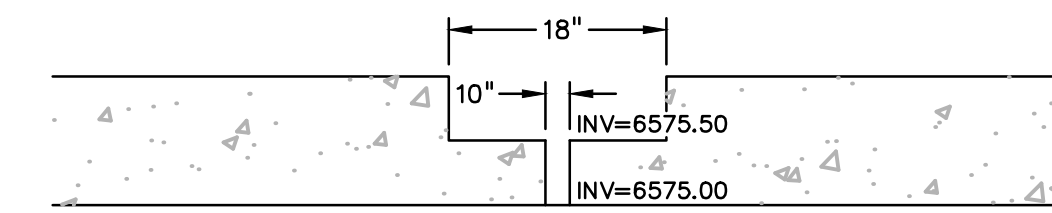
NORTH POND NORTH FOREBAY
SCALE: 1"=10'



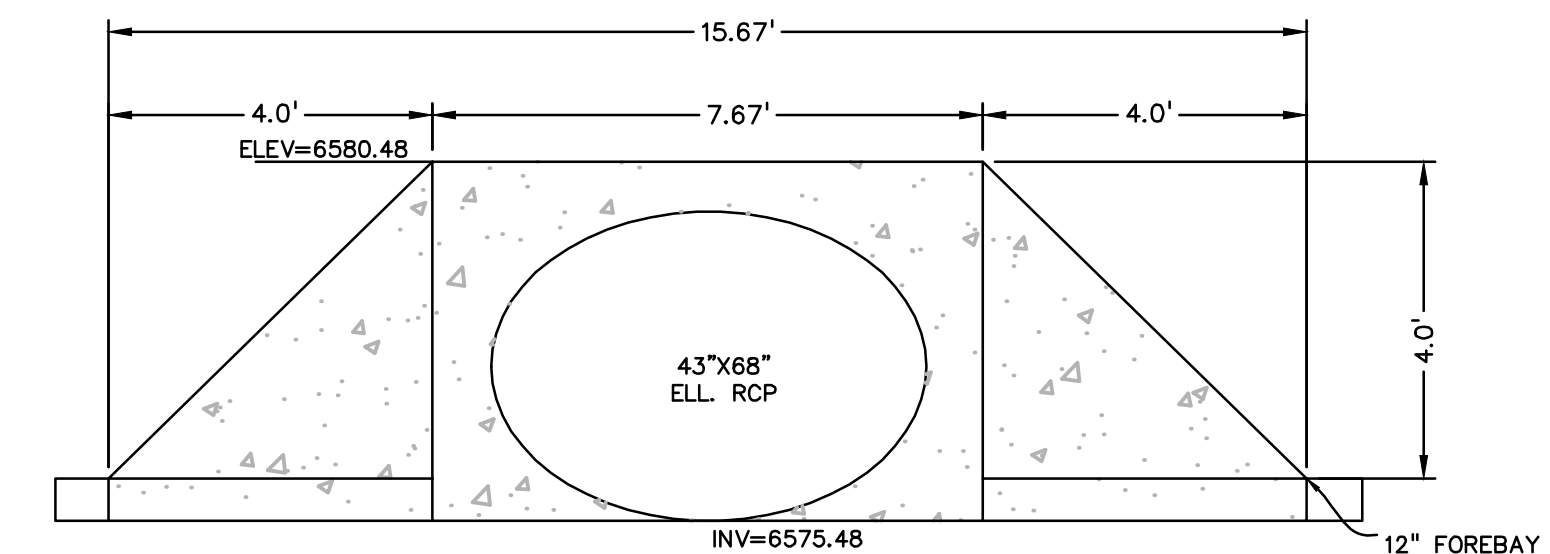
NORTH POND SOUTH FOREBAY
SCALE: 1"=10'



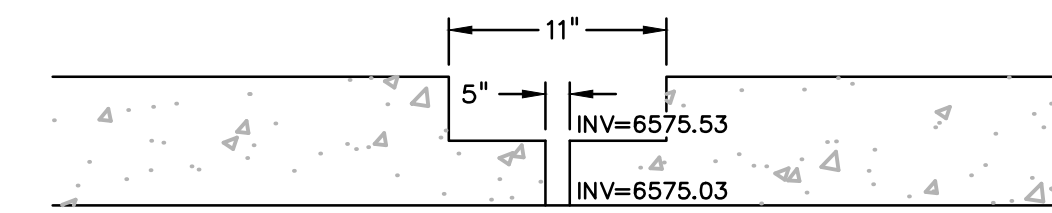
NORTH POND NORTH FOREBAY OPENING
NO SCALE



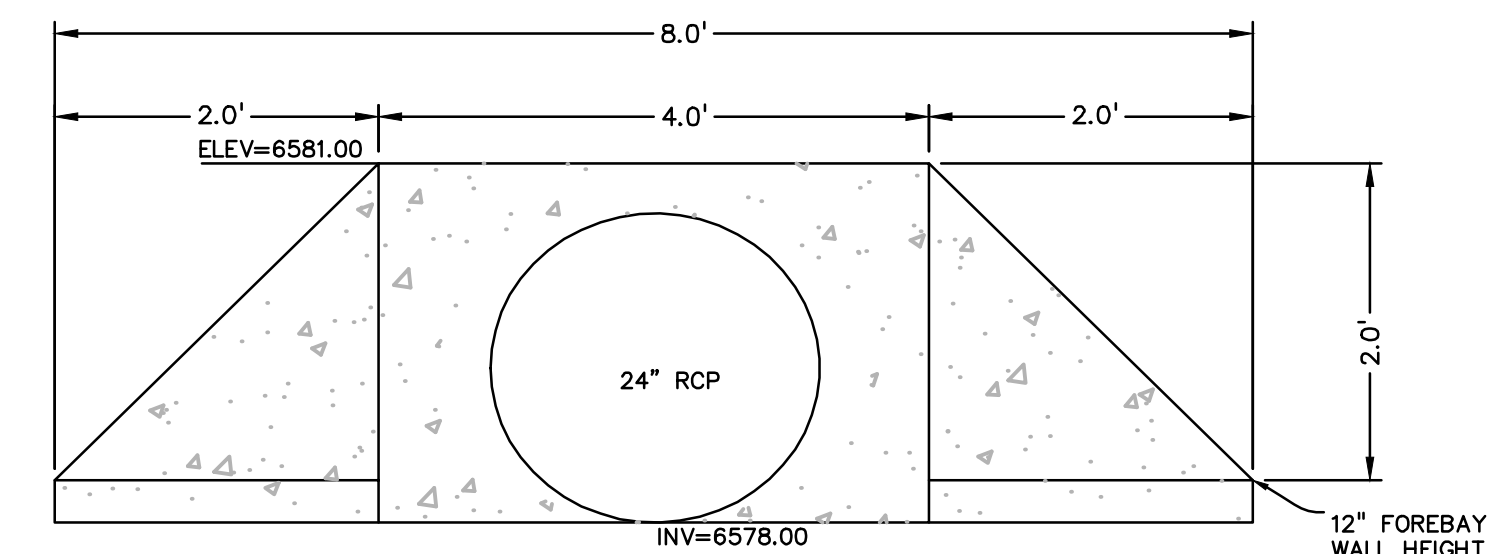
NORTH POND NORTH FOREBAY NOTCH
NO SCALE



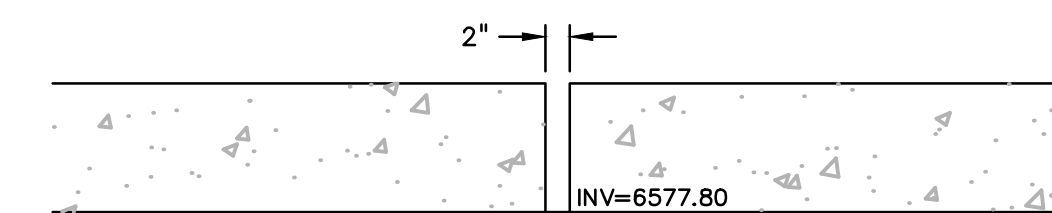
NORTH POND SOUTH FOREBAY HEADWALL
NO SCALE



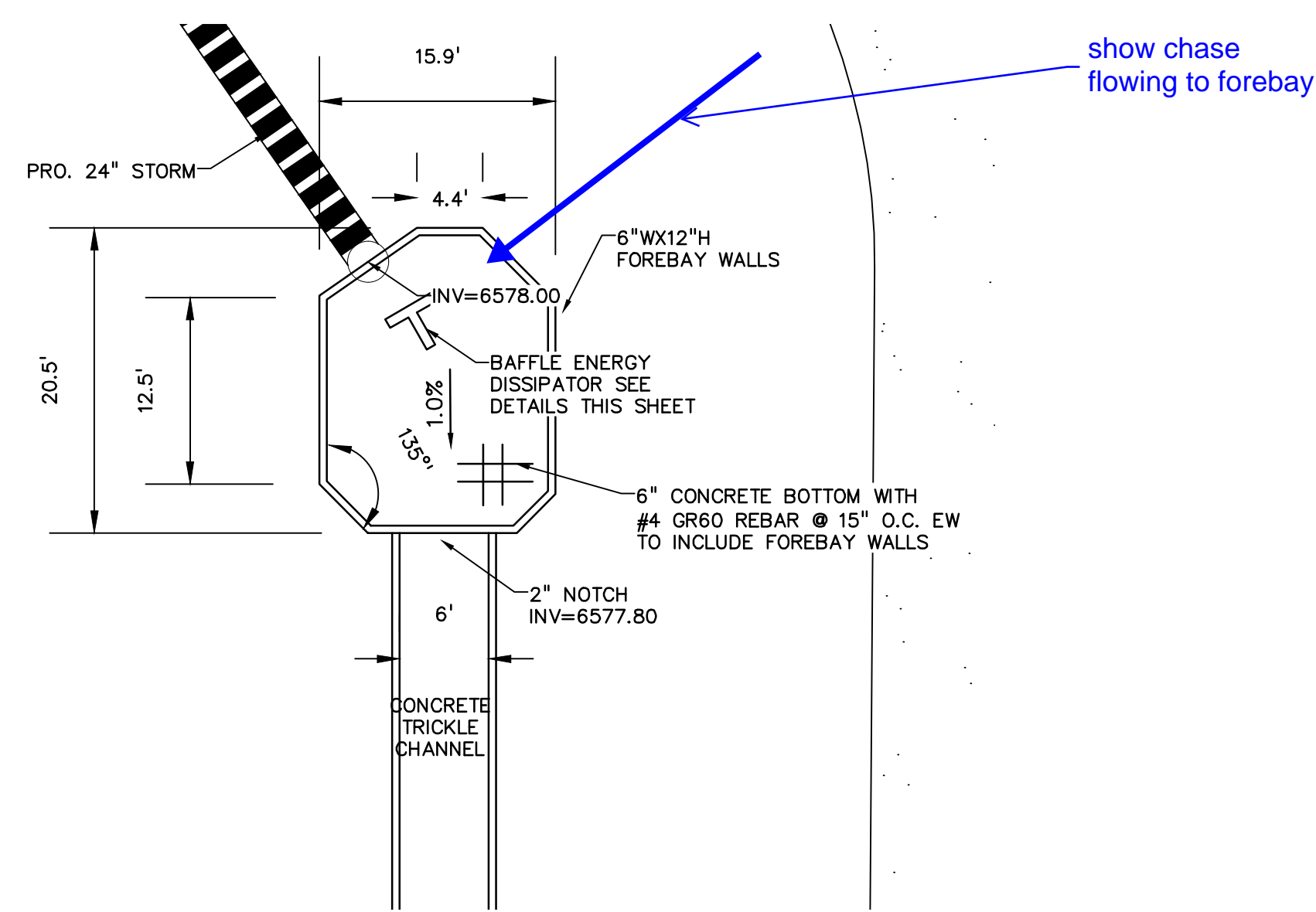
NORTH POND SOUTH FOREBAY NOTCH
NO SCALE



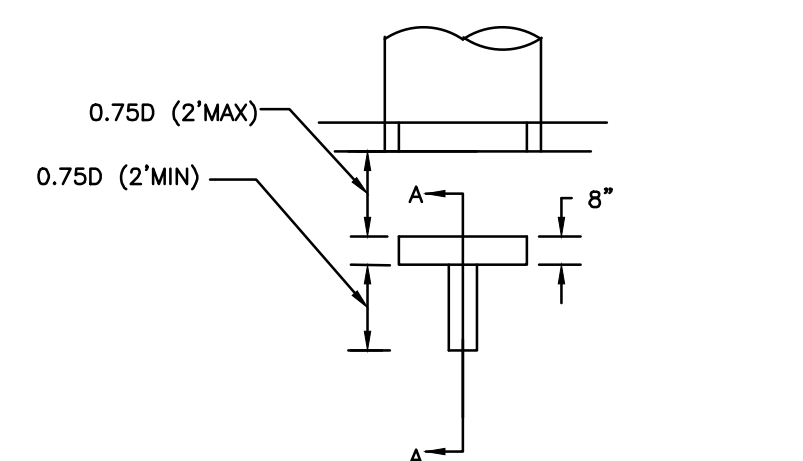
SOUTH POND FOREBAY HEADWALL
NO SCALE



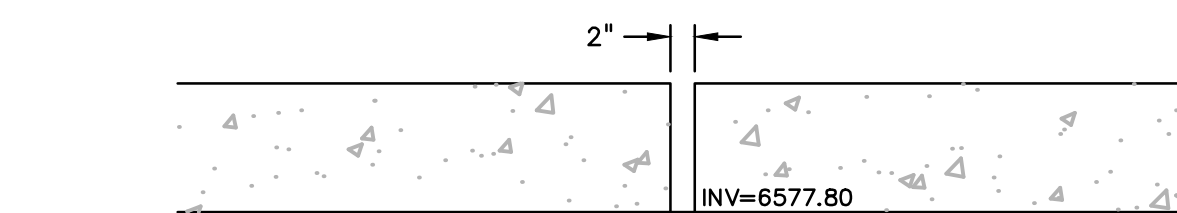
SOUTH POND FOREBAY NOTCH
NO SCALE



SOUTH POND NORTH FOREBAY
SCALE: 1"=10'



FOREBAY BAFFLE ENERGY DISSIPATORS
NO SCALE



SOUTH POND FOREBAY NOTCH
NO SCALE

PREPARED BY:



DREXEL, BARRELL & CO.
Engineers & Surveyors
3 SOUTH 7TH STREET
COLORADO SPGS, COLORADO 80905
CONTACT: TIM D. MCCONNELL, P.E.
(719)260-0887
BOULDER • COLORADO SPRINGS • GREELEY

CLIENT:



THE LANDHUIS COMPANY
212 N. WAHSATCH AVE., #301
COLORADO SPRINGS, CO 80903
(719) 635-3200
CONTACT: JEFF MARK

WINDERMERE
GRADING & EROSION CONTROL
 N. MARKSHEFFEL ROAD
 EL PASO COUNTY, COLORADO

ISSUE	DATE
INITIAL ISSUE	2/21/19
LATEST ISSUE	2/7/22

DESIGNED BY: KGV
DRAWN BY: KGV
CHECKED BY: TDM
FILE NAME: 21187-01FB

PREPARED UNDER MY DIRECT SUPERVISION FOR AND ON BEHALF OF DREXEL, BARRELL & CO.



DRAWING SCALE:
HORIZONTAL: N/A
VERTICAL: N/A

FOREBAY DETAILS

PROJECT NO. 21187-01CSCV
DRAWING NO.

FB

SHEET: 10 OF 10