

GESC PLAN LEGEND

SURFACE ROUGHENING/ TEMPORARY SEEDING		NON-IRRIGATED DROUGHT TOLERANT NATIVE GRASSES	
SILT FENCE			
VEHICLE TRACKING CONTROL			
STABILIZED STAGING AREA			
CONCRETE WASHOUT AREA			
INLET PROTECTION			
TEMPORARY STOCKPILE			
FLOW DIRECTION			
LIMITS OF DISTURBANCE			

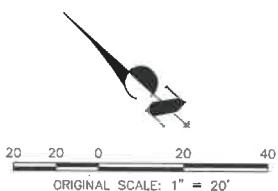
LEGEND

EXISTING CONTOURS		6100
PROPOSED INDEX CONTOURS		6100
PROPOSED INTERMEDIATE CONTOURS		
PROPOSED STORM SEWER		
PROPOSED INLET		
FINISHED GRADE ELEVATION	XX.XX	
LOW POINT ELEVATION	XX.XX LP	
HIGH POINT ELEVATION	XX.XX HP	
RIGHT OF WAY ELEVATION	XX.XX ROW	
GRADE BREAK ELEVATION	XX.XX GB	
FLOW LINE ELEVATION	XX.XX FL	
PROPOSED RIDGELINE		
LIMITS OF DISTURBANCE		
EROSION CONTROL BLANKET		
CUT-FILL LIMITS		C/F

GESC PLAN NOTES

- SEE COVER SHEET FOR EL PASO COUNTY GRADING AND EROSION CONTROL NOTES. THE PLAN SHALL NOT SUBSTANTIALLY CHANGE THE DEPTH OF COVER, OR ACCESS TO UTILITY FACILITIES. ADDITIONALLY, THE PLAN SHALL NOT INCREASE OR DIVERT WATER TOWARDS UTILITY FACILITIES. ANY CHANGES TO UTILITY FACILITIES TO ACCOMMODATE THE PLAN, MUST BE DISCUSSED AND AGREED TO BY THE AFFECTED UTILITY PRIOR TO IMPLEMENTING THE PLAN. THE RESULTING COST TO RELOCATE OR PROTECT UTILITIES, OR PROVIDE INTERIM ACCESS IS AT THE EXPENSE OF THE PLAN APPLICANT.
- ENTIRE SITE IS OUTSIDE OF THE 100 YEAR FLOOD PLAIN
- CONTRACTOR RESPONSIBLE FOR OBTAINING ALL REQUIRED PERMITS INCLUDING A COUNTY R.O.W. PERMIT.
- CONTRACTOR RESPONSIBLE FOR CONTROLLING ALL STORMWATER AND EROSION IMPACTED OR ORIGINATING FROM CONSTRUCTION ACTIVITIES ON SITE, IMPLEMENTING THIS GEC PLAN, MAINTAINING & REMOVING BMP'S, AND ESTABLISHING FINAL STABILIZATION OF THE SITE. CHANGES TO THIS PLAN AND ITS IMPLEMENTATION INCLUDING MODIFICATIONS, ADDITIONAL BMP'S OR REMOVAL OF PROPOSED BMP'S, SHALL BE BY THE CONTRACTOR IF NECESSARY TO CONTROL STORMWATER AND EROSION BASED ON ACTUAL SITE CONDITIONS AND PHASING.

LAND DISTURBANCE		
	VOLUME (CY)	AREA (AC)
CUT	315	0.34
FILL	222	0.22
NET	93 (CUT)	N/A



OWNER'S STATEMENT:

THE OWNER WILL COMPLY WITH THE REQUIREMENTS OF THE GRADING AND EROSION CONTROL PLAN.

[Signature] 5-3-18
NAME DATE

ENGINEER'S STATEMENT:

THE GRADING AND EROSION CONTROL PLAN WAS PREPARED UNDER MY DIRECTION AND SUPERVISION AND IS CORRECT TO THE BEST OF MY KNOWLEDGE AND BELIEF. SAID PLAN HAS BEEN PREPARED ACCORDING TO THE CRITERIA ESTABLISHED BY THE COUNTY FOR GRADING AND EROSION CONTROL PLANS. I ACCEPT RESPONSIBILITY FOR ANY LIABILITY CAUSED BY ANY NEGLIGENT ACTS, ERRORS OR OMISSIONS ON MY PART IN PREPARING THIS PLAN.

[Signature]
GLENN D. ELLIS P.E.
COLORADO P.E. 38861
FOR AND ON BEHALF OF JR ENGINEERING

38861
May 3, 2018

UNTIL SUCH TIME AS APPROVED BY THE APPROPRIATE ENGINEERING AGENCIES, JR ENGINEERING APPROVES THEIR USE ONLY FOR THE PURPOSES DESIGNATED BY WRITTEN AUTHORIZATION.

PREPARED FOR
RON COVINGTON HOMES
13725 STRUTHERS ROAD, SUITE 200
COLORADO SPRINGS, CO 80920
CONTACT: RON COVINGTON
719-491-1220

J.R. ENGINEERING
A Weidman Company
Central 303-740-9883 • Colorado Springs 719-580-2883
Fort Collins 970-491-9888 • www.jrengineering.com

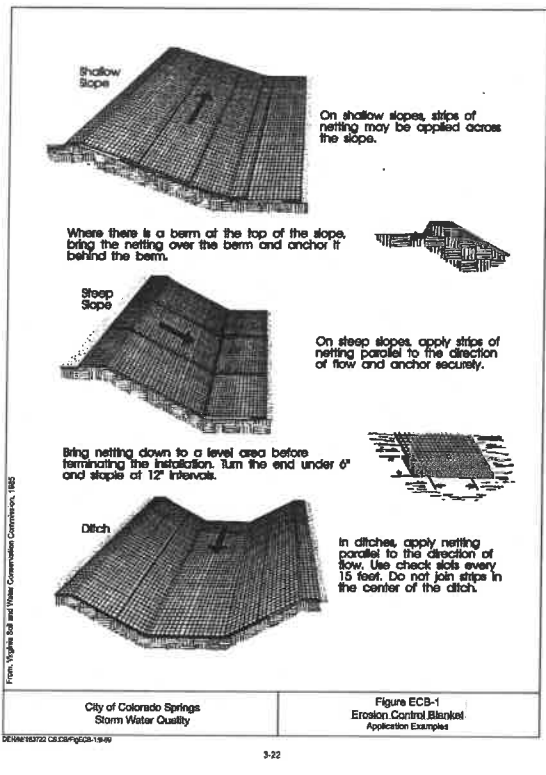
NO.	REVISION	BY	DATE
1	RAB		
2	RAB		

H-SCALE 1"=20'
V-SCALE N/A
DATE 05/03/18
DESIGNED BY AJH
DRAWN BY AJH
CHECKED BY

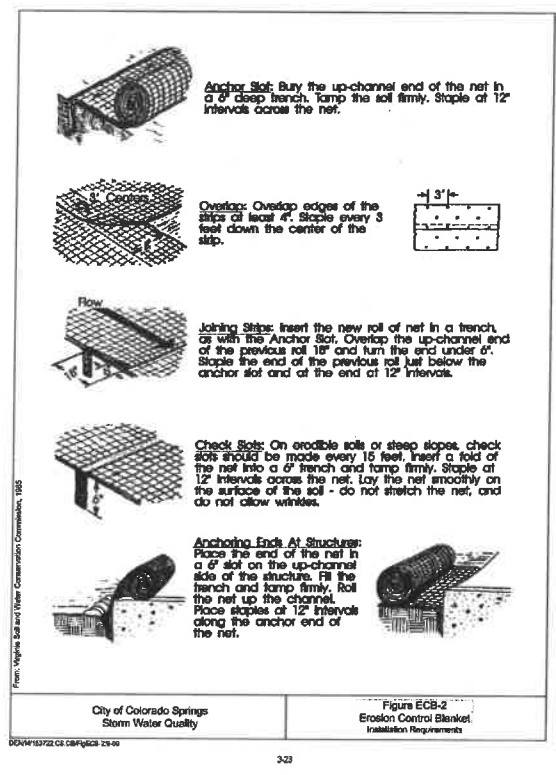
ACADEMY VILLAGE FILING NO. 3

GRADING AND EROSION CONTROL PLAN
GEC PLAN

SHEET 2 OF 5
JOB NO. 25123.00



City of Colorado Springs Storm Water Quality
 Figure ECB-1 Erosion Control Blanket Application Examples



City of Colorado Springs Storm Water Quality
 Figure ECB-2 Erosion Control Blanket Installation Requirements



City of Colorado Springs Stormwater Quality
 Figure IP-1 Filter Fabric Inlet Protection Construction Detail and Maintenance Requirements

RECOMMENDED ANNUAL GRASSES

SPECIES (COMMON NAME)	GROWTH SEASON	SEEDING DATE	POUNDS OF PURE LIVE SEED (PLS) (PUNDRS)	PLANTING DEPTH (INCHES)
1. COATS	COOL	MARCH 15 - APRIL 30	25-50	1-2
2. SPRING WHEAT	COOL	MARCH 15 - APRIL 30	25-50	1-2
3. SPRING BARLEY	COOL	MARCH 15 - APRIL 30	25-50	1-2
4. ANNUAL RYEGRASS	COOL	MARCH 15 - JUNE 30	10-15	1/2
5. MILLET	WARM	MAY 15 - JULY 15	3-15	1/2-3/4
6. BUDAGRASS	WARM	MAY 15 - JULY 15	5-10	1/2-3/4
7. BORGHUM	WARM	MAY 15 - JULY 15	5-10	1/2-3/4
8. WINTER WHEAT	COOL	SEPTEMBER 1 - 30	20-25	1-2
9. WINTER BARLEY	COOL	SEPTEMBER 1 - 30	20-25	1-2
10. WINTER RYE	COOL	SEPTEMBER 1 - 30	20-25	1-2
11. TRITICALE	COOL	SEPTEMBER 1 - 30	20-40	1-2

THIS TABLE WAS TAKEN FROM LDCO FOR RECOMMENDED ANNUAL GRASSES FOR THE DENVER METROPOLITAN AREA. THIS TABLE MAY BE USED UNLESS A SITE-SPECIFIC SEED MIX IS REQUESTED AND APPROVED.

TABLE TS-1

TEMPORARY SEEDING NOTES

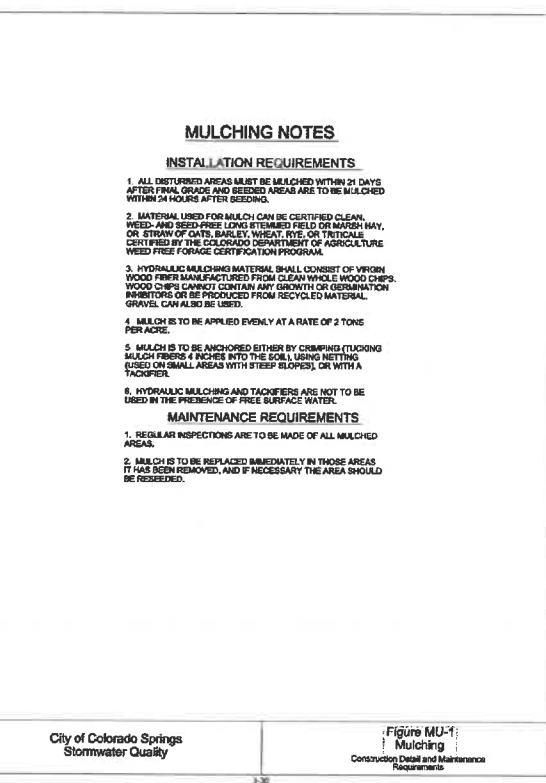
INSTALLATION REQUIREMENTS

1. DISTURBED AREAS ARE TO BE REEDED WITHIN 21 DAYS AFTER CONSTRUCTION ACTIVITY OR GRADING ENDS IF SEASON ALLOWS.
2. IF NECESSARY, SOIL IS TO BE CONDITIONED FOR PLANT GROWTH BY APPLYING TOPSOIL, FERTILIZER, OR LIME.
3. SOIL IS TO BE TILLED IMMEDIATELY PRIOR TO APPLYING SEED. COMPACT SOILS ESPECIALLY NEED TO BE LOOSENED.
4. SEEDING DEPTH IS TO BE 4 INCHES FOR SLOPES FLATTER THAN 2:1, AND 1 INCH FOR SLOPES STEEPER THAN 2:1.
5. ANNUAL GRASSES LISTED IN TABLE TS-1 ARE TO BE USED FOR TEMPORARY SEEDING. SEED MIXES ARE NOT TO CONTAIN ANY NONNATIVE WEED SEEDS INCLUDING RUSSIAN OR CANADIAN THISTLE, KNAPWEED, PURPLE LOOSESTRIFE, EUROPEAN BIRCH, JOHNSON GRASS, AND LEAFY SPURGE.
6. TABLE TS-1 ALSO PROVIDES REQUIREMENTS FOR SEEDING RATES, SEEDING DATES, AND PLANTING DEPTHS FOR THE APPROVED TYPES OF ANNUAL GRASSES.
7. SEEDING IS TO BE APPLIED USING MECHANICAL TYPE DRILLS EXCEPT WHERE SLOPES ARE STEEP OR ACCESS IS LIMITED THEN HYDRAULIC SEEDING MAY BE USED.
8. ALL SEEDING AREAS ARE TO BE MULCHED (SEE FACTSHEET ON MULCHING).
9. IF HYDRAULIC SEEDING IS USED THEN HYDRAULIC MULCHING SHALL BE DONE SEPARATELY TO AVOID WEEDS BEING RECAPSULATED IN THE MULCH.

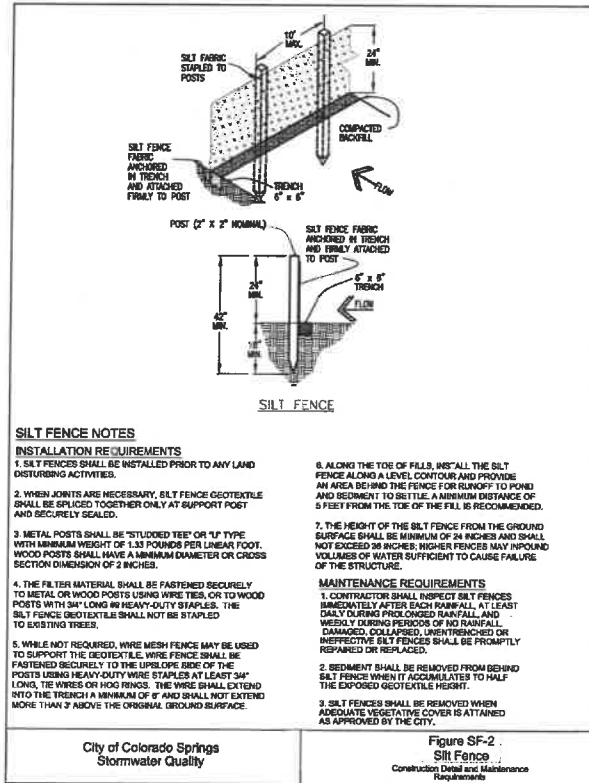
MAINTENANCE REQUIREMENTS

1. REGULAR INSPECTIONS ARE TO BE MADE OF ALL REEDED AREAS TO ENSURE GROWTH.
2. AREAS WHERE GROWTH IS NOT OCCURRING QUICKLY OR THE MULCH HAS BEEN REMOVED SHALL BE RE-SEED AS SOON AS POSSIBLE AND RE-MULCHED IF NEEDED.
3. REEDED AREAS ARE NOT TO BE DRIVEN OVER WITH CONSTRUCTION EQUIPMENT OR VEHICLES.

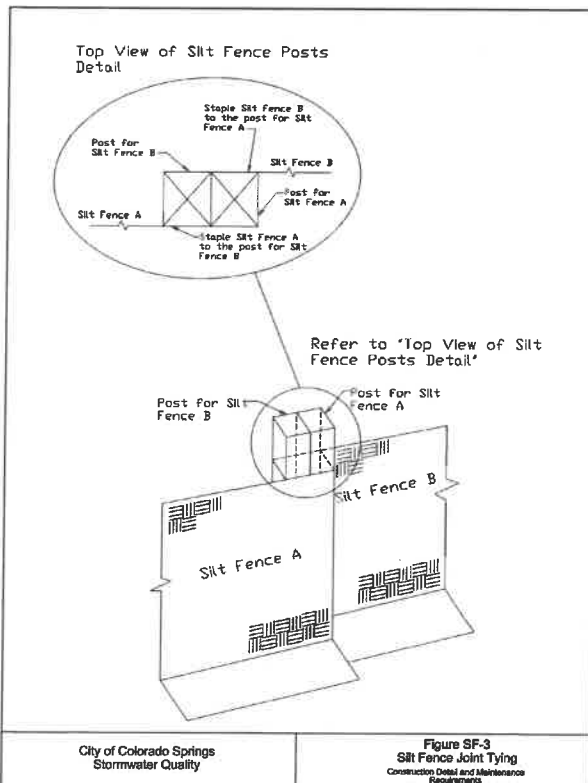
City of Colorado Springs Stormwater Quality
 Figure TS-1 Temporary Seeding Construction Detail and Maintenance Requirements



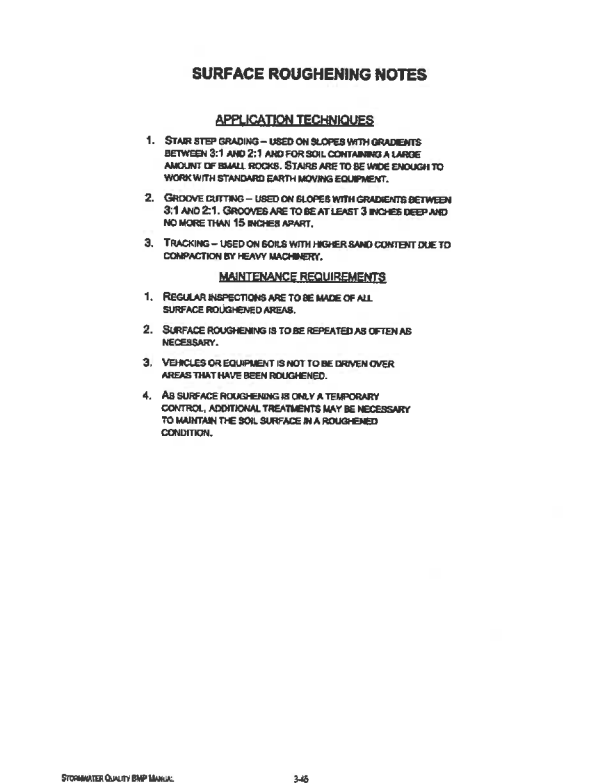
City of Colorado Springs Stormwater Quality
 Figure MU-1 Mulching Construction Detail and Maintenance Requirements



City of Colorado Springs Stormwater Quality
 Figure SF-2 Silt Fence Construction Detail and Maintenance Requirements



City of Colorado Springs Stormwater Quality
 Figure SF-3 Silt Fence Joint Tying Construction Detail and Maintenance Requirements



City of Colorado Springs Stormwater Quality
 Figure SR-1 Surface Roughening Construction Detail and Maintenance Requirements

UNLESS SUCH TIME AS THESE DRAWINGS ARE PREPARED, THE ENGINEER HAS REVIEWED THE DESIGN AND APPROVED THE USE ONLY FOR THE PURPOSES DESIGNATED BY WRITTEN AUTHORIZATION.

PREPARED FOR
RON COVINGTON HOMES
 13725 STRATHERS ROAD, SUITE 200
 COLORADO SPRINGS, CO 80920
 CONTACT: RON COVINGTON
 719-491-1220

J.R. ENGINEERING
 A Weidman Company
 Centennial 303-746-9888 • Olathe 781-500-2560
 Fort Collins 970-491-8888 • www.jrengineering.com

ACADEMY VILLAGE FILING NO. 3

GRADING AND EROSION CONTROL DETAILS

BY	DATE	NO.	REVISION
			RAB
			RAB

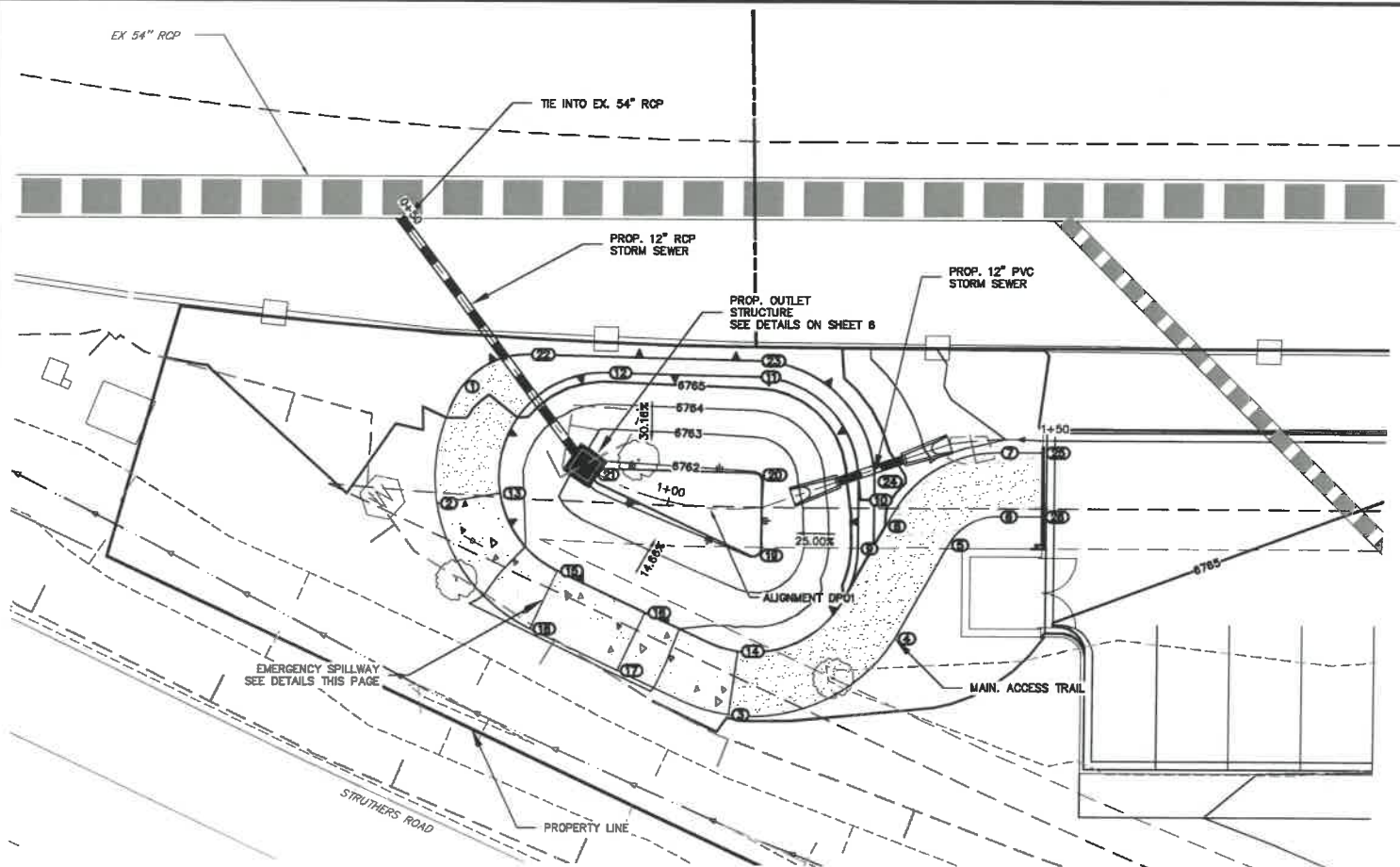
H-SCALE N/A
 V-SCALE N/A
 DATE 05/03/18
 DESIGNED BY NJQ
 DRAWN BY NJQ
 CHECKED BY

ENGINEER'S STATEMENT
 STANDARD DETAILS SHOWN WERE REVIEWED AND FOUND TO BE APPLICABLE TO THIS PROJECT.

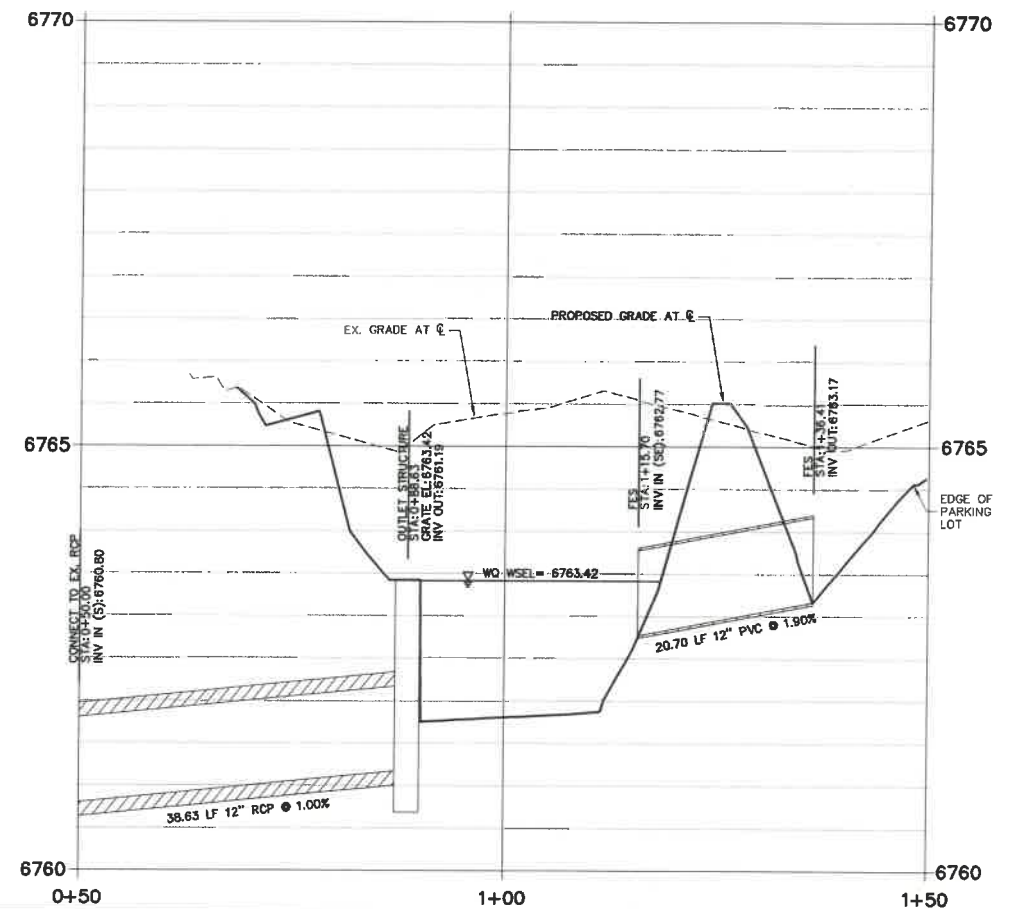
Glenn E. Ellis, P.E.
 COLORADO P.E. 38861
 FOR AND ON BEHALF OF JR ENGINEERING

May 3, 2018

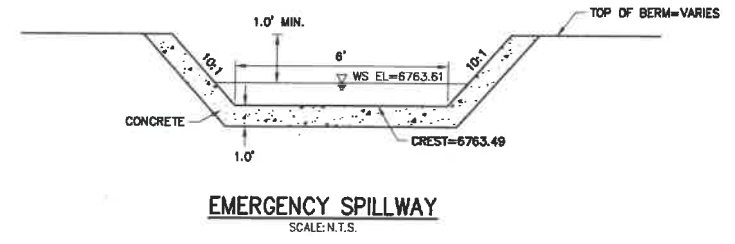
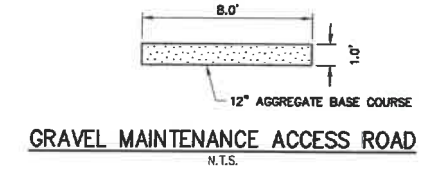
SHEET 3 OF 5
 JOB NO. 25123.00



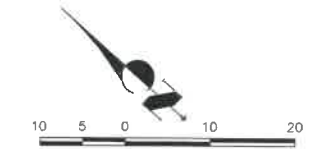
**DP01 PROFILE
STA 0+50.00 TO 1+50.00**



POINT TABULATION			
ID NO.	DESCRIPTION	NORTHING/EASTING	ELEVATION
1	MAINT. PATH	N: 6455.12 E: 9523.23	6765.16
2	MAINT. PATH	N: 6447.63 E: 9510.37	6764.93
3	MAINT. PATH	N: 6402.76 E: 9515.13	6764.84
4	MAINT. PATH	N: 6393.71 E: 9536.01	6764.84
5	MAINT. PATH	N: 6396.59 E: 9549.12	6764.84
6	MAINT. PATH	N: 6394.41 E: 9555.86	6764.84
7	MAINT. PATH	N: 6399.72 E: 9561.84	6764.83
8	MAINT. PATH	N: 6404.06 E: 9545.61	6765.00
9	TOP	N: 6404.71 E: 9541.23	6765.30
10	TOP	N: 6410.29 E: 9547.50	6765.51
11	TOP	N: 6428.41 E: 9548.79	6765.51
12	TOP	N: 6442.80 E: 9536.60	6765.41
13	TOP	N: 6442.59 E: 9516.58	6764.93
14	TOP	N: 6407.21 E: 9521.78	6764.84
15	OVERFLOW	N: 6430.71 E: 9514.21	6763.49
16	OVERFLOW	N: 6419.07 E: 9517.66	6763.49
17	OVERFLOW	N: 6416.80 E: 9509.99	6763.49
18	OVERFLOW	N: 6428.44 E: 9506.54	6763.49
19	TOE	N: 6413.50 E: 9532.23	6761.99
20	TOE	N: 6420.02 E: 9539.88	6761.96
21	TOE	N: 6435.32 E: 9526.24	6761.80
22	TOP	N: 6451.61 E: 9531.78	6765.28
23	TOP	N: 6429.71 E: 9550.31	6765.51
24	TOP	N: 6408.80 E: 9548.83	6765.51
25	MAINT. PATH	N: 6395.50 E: 9555.59	6764.84
26	MAINT. PATH	N: 6390.18 E: 9559.61	6764.84



THE LOCATIONS OF EXISTING ABOVE GROUND AND UNDERGROUND UTILITIES ARE SHOWN IN AN APPROXIMATE WAY ONLY. THE CONTRACTOR SHALL DETERMINE THE EXACT LOCATION OF ALL EXISTING UTILITIES BEFORE COMMENCING WORK. THE CONTRACTOR SHALL BE FULLY RESPONSIBLE FOR ANY AND ALL DAMAGES WHICH MIGHT BE CAUSED BY HIS FAILURE TO EXACTLY LOCATE AND PRESERVE ANY AND ALL ABOVE GROUND AND UNDERGROUND UTILITIES.



OWNER'S STATEMENT

THE OWNER WILL COMPLY WITH THE REQUIREMENTS OF THE GRADING AND EROSION CONTROL PLAN.
NAME: *Paul J. ...* DATE: 5-3-18

ENGINEER'S STATEMENT

PREPARED UNDER MY DIRECT SUPERVISION AND ON BEHALF OF JR ENGINEERING
GLENN D. ELLIS, P.E.
COLORADO P.E. 38861
FOR AND ON BEHALF OF JR ENGINEERING
DATE: May 3, 2018

UNTIL SUCH TIME AS APPROVED CHANGES ARE APPROPRIATELY REVIEWED AND APPROVED BY THE AGENCIES, JR ENGINEERING ACCEPTS NO LIABILITY FOR THE PURPOSES DESIGNATED BY WRITTEN AUTHORIZATION.

PREPARED FOR
RON COVINGTON HOMES
13725 STRUTHERS ROAD, SUITE 200
COLORADO SPRINGS, CO 80920
CONTACT: RON COVINGTON
719-491-1220

J.R. ENGINEERING
A Weitzman Company
Central 303-740-9888 • Colorado Springs 719-593-2583
Fort Collins 970-491-9888 • www.jrengineering.com

BY	DATE	REVISION

H-Scale: 1" = 10'
V-Scale: 1" = 1'
DATE: 05/03/18
DESIGNED BY: AJH
DRAWN BY: RAB
CHECKED BY:

ACADEMY VILLAGE FILING NO. 3
POND GRADING PLAN

SHEET 4 OF 5
JOB NO. 25123.00

