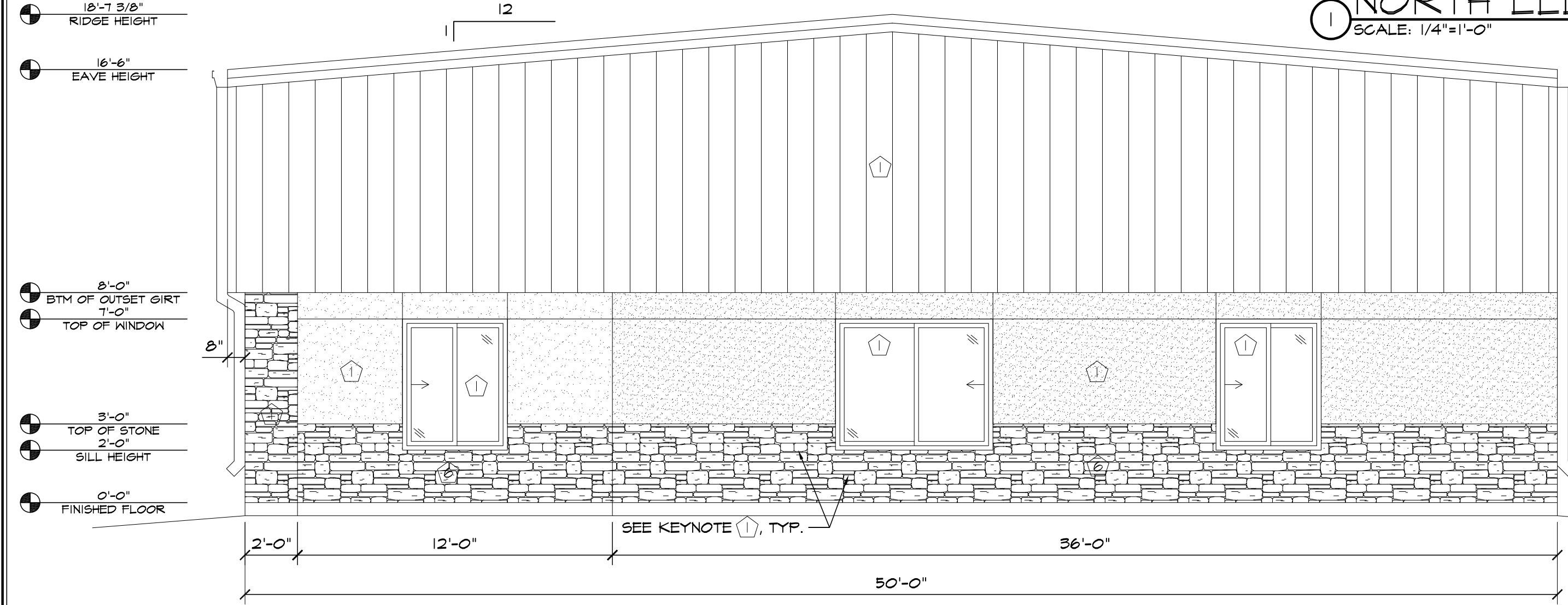
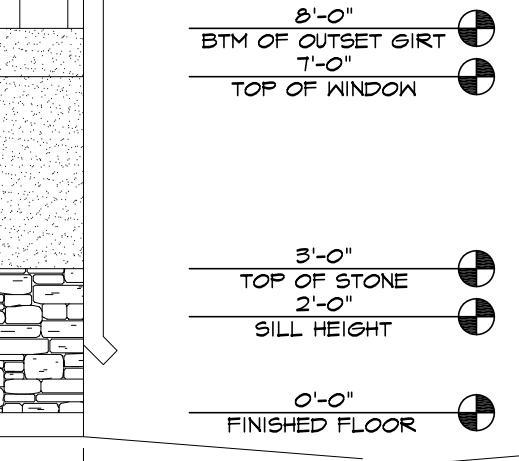


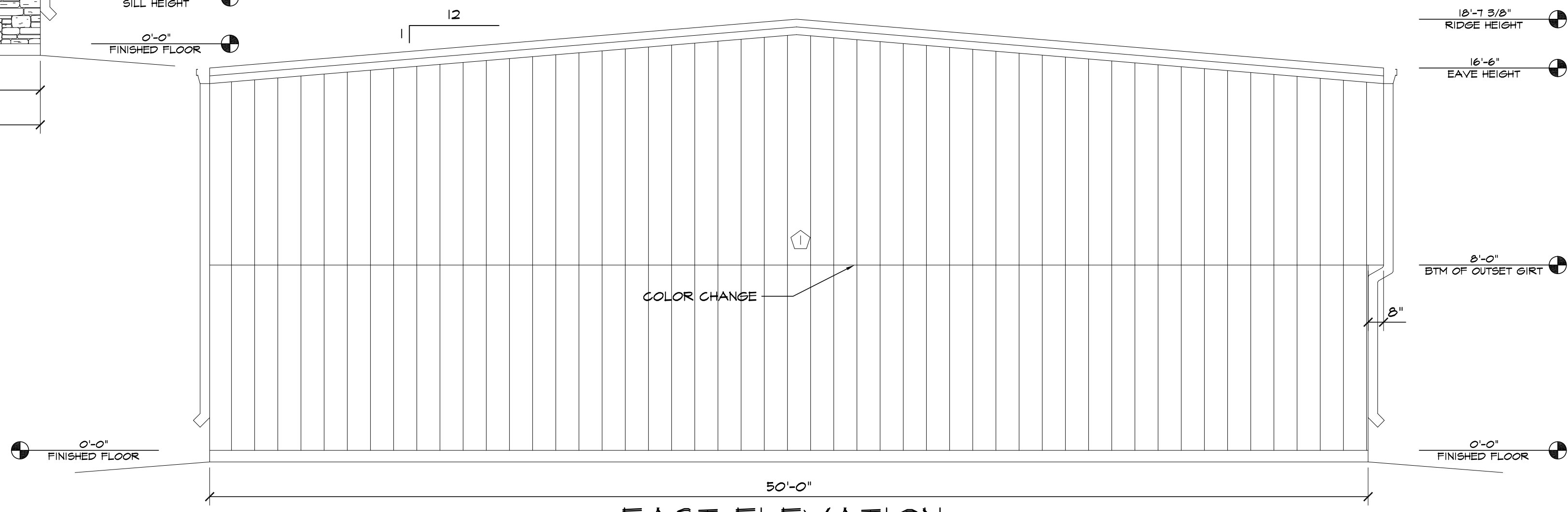
1 NORTH ELEVATION
SCALE: 1/4"=1'-0"



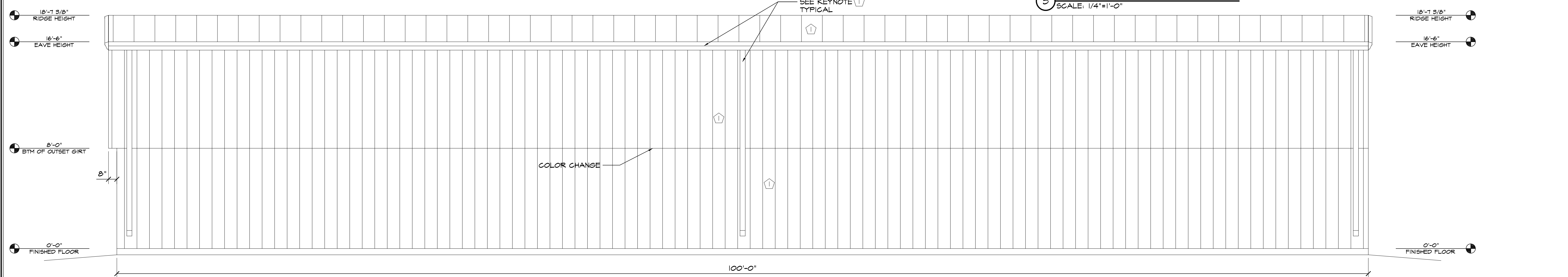
2 WEST ELEVATION
SCALE: 1/4"=1'-0"



ELEVATION KEY NOTES	
⬠	EXISTING
⬠	NEW 12'x14' O.H. DOOR



3 EAST ELEVATION
SCALE: 1/4"=1'-0"



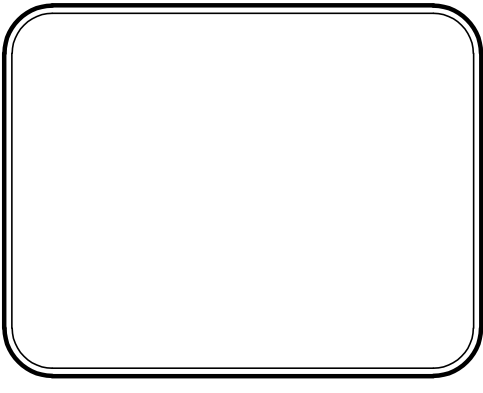
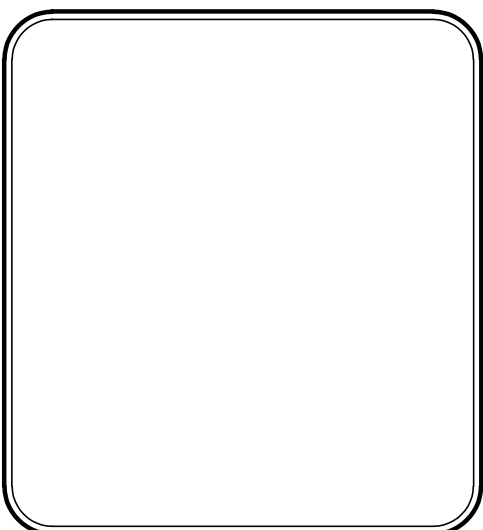
4 SOUTH ELEVATION
SCALE: 1/4"=1'-0"

EL PASO COUNTY FILE NO. PPR-21-063

HAMMERS CONSTRUCTION INC.
 COMMERCIAL GENERAL CONTRACTORS SPECIALIZING IN DESIGN/BUILD
 PRESIDENT: STEVE R. HAMMERS
 VICE PRES: DAVID J. HAMMERS
 1411 WOOLSEY HEIGHTS
 COLORADO SPRINGS, CO 80915
 (719) 570-1999 FAX (719) 570-7008
 www.hammersconstruction.com

THIS DRAWING CONTAINS MATERIAL & INFORMATION WHICH MAY NOT BE REPRODUCED WITHOUT WRITTEN CONSENT OF HAMMERS CONSTRUCTION INC. THESE DRAWINGS ARE INTENDED TO BE USED ONLY BY HAMMERS CONSTRUCTION & ITS REPRESENTATIVES. THESE DRAWINGS HAVE NOT BEEN PREPARED FOR ANY OTHER PURPOSE THAN TO INDICATE THE GENERAL FEATURES AND PLACEMENT OF THE PROPOSED PROJECT. COPYRIGHT © 2022 HAMMERS CONSTRUCTION

GEARHEAD
 CLAREMONT BUSINESS PARK, LOT 9
 1453 WOOLSEY HEIGHTS
 COLORADO SPRINGS, CO 80915
 EL PASO COUNTY, COLORADO



DATE: DEC. 6, 2021
 DRAWN BY: J.CANTERBERRY
 PROJ. MGR: G.FAVELLO
 SCALE: SEE PLAN
 APPROVED BY:
 JOB NO: 1-008

- △ SUBMITTALS:
- △ 12-20-21/ EPC COMMENTS 12-8-21
- △ 2-8-22/ RED COMMENTS 1-21-22
- △
- △
- △