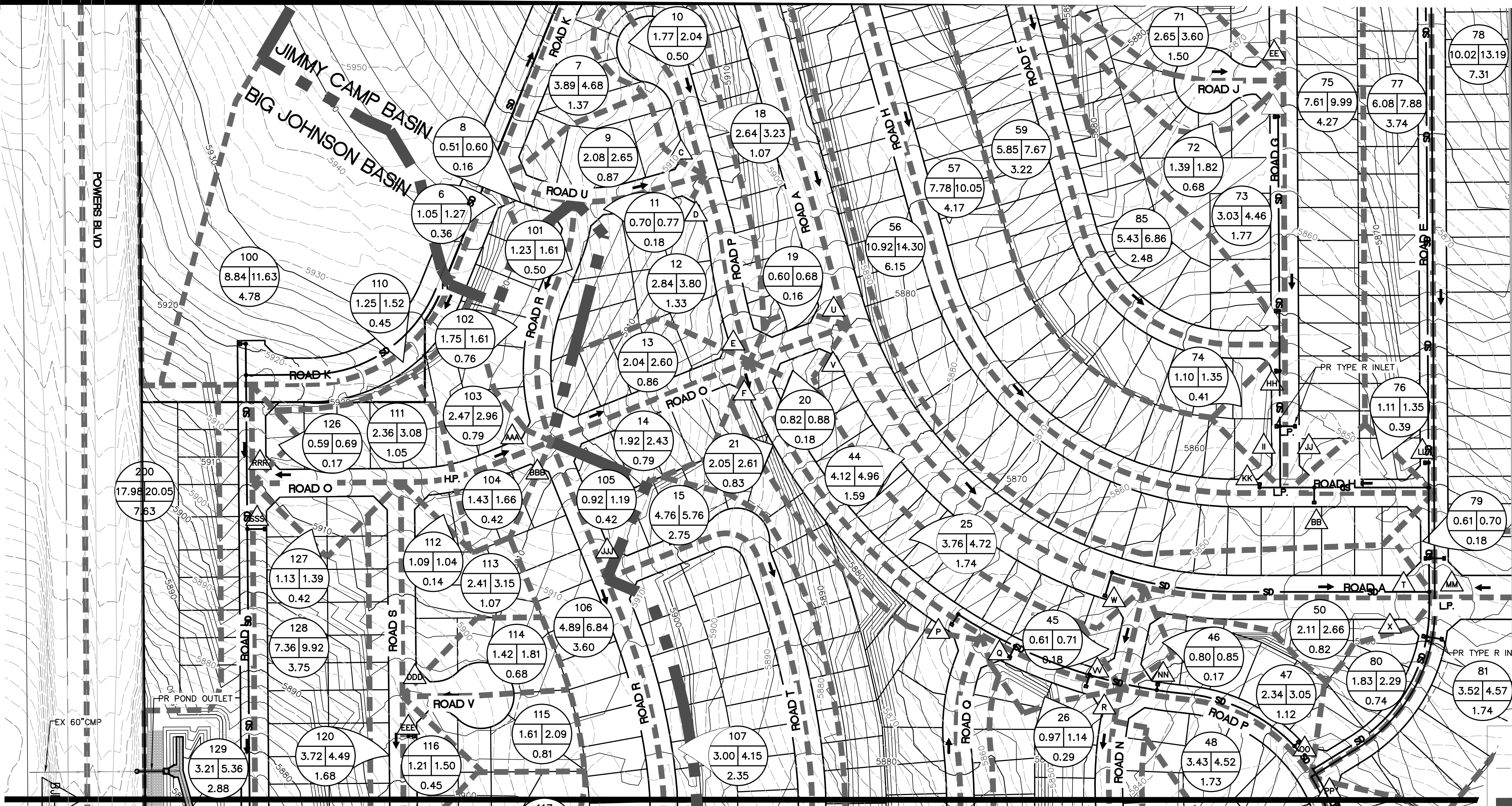
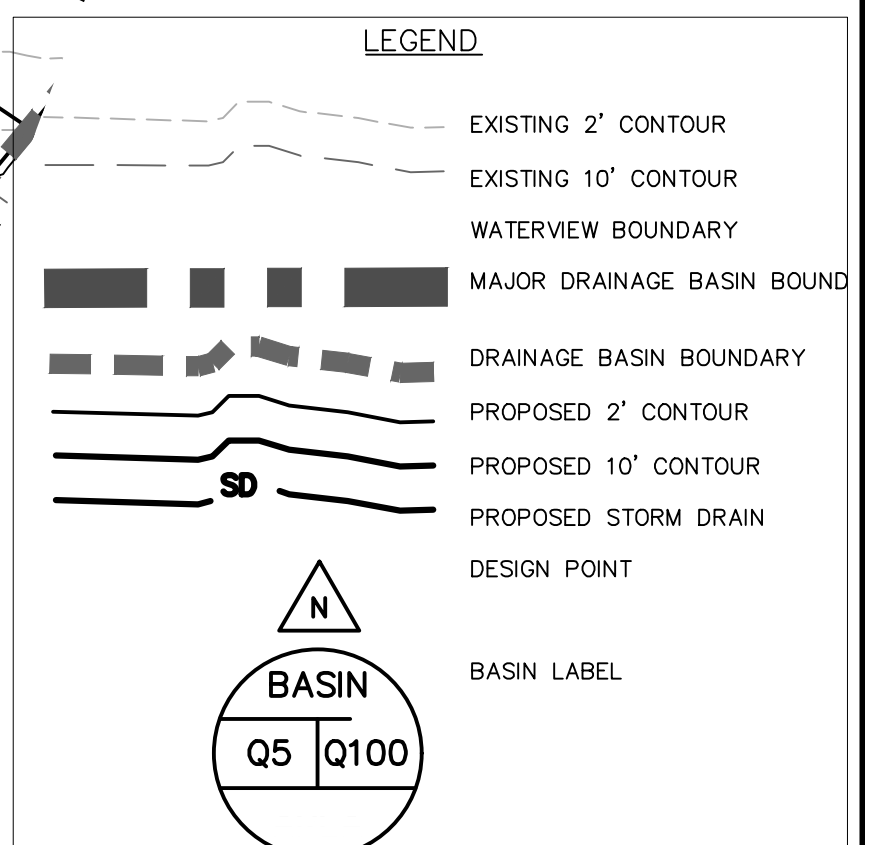


MATCH LINE SEE SH 1



| DESIGN POINT | Q(5) | Q(100) |
|--------------|------|--------|
| A            | 32.3 | 56.3   |
| B            | 3.6  | 10.3   |
| C            | 2.8  | 8.0    |
| D            | 3.6  | 10.1   |
| E            | 7.3  | 19.6   |
| F            | 8.7  | 23.3   |
| G            | 12.2 | 22.4   |
| H            | 7.8  | 18.3   |
| I            | 5.2  | 14.7   |
| J            | 6.7  | 17.1   |
| K            | 9.9  | 22.3   |
| L            | 4.1  | 14.0   |
| M            | 1.4  | 8.4    |
| N            | 3.8  | 9.6    |
| O            | 5.4  | 17.0   |
| P            | 10.8 | 27.1   |
| Q            | 3.8  | 17.3   |
| R            | 0.7  | 6.6    |
| S            | 51.5 | 110.7  |
| T            | 3.7  | 22.6   |
| U            | 4.7  | 11.5   |
| V            | 5.2  | 12.6   |
| W            | 8.6  | 19.2   |
| X            | 2.0  | 9.6    |
| Y            | 5.0  | 11.6   |
| Z            | 9.7  | 22.2   |
| AA           | 12.5 | 28.0   |
| BB           | 10.3 | 24.8   |
| CC           | 3.5  | 9.2    |
| DD           | 4.8  | 12.4   |
| EE           | 8.0  | 20.0   |
| FF           | 9.2  | 22.8   |
| GG           | 8.9  | 27.9   |
| HH           | 8.1  | 30.5   |
| II           | 1.0  | 14.9   |
| JJ           | 7.1  | 17.3   |
| KK           | 8.0  | 19.2   |
| LL           | 8.4  | 25.5   |
| MM           | 12.1 | 20.3   |
| NN           | 6.3  | 15.5   |
| OO           | 3.3  | 10.4   |
| PP           | 3.0  | 10.6   |
| QQ           | 4.3  | 17.6   |
| RR           | 9.5  | 25.5   |
| SS           | 3.5  | 10.1   |
| TT           | 3.6  | 9.0    |
| UU           | 13.5 | 25.3   |
| VV           | 5.4  | 13.5   |
| AAA          | 3.0  | 8.6    |
| BBB          | 4.0  | 11.1   |
| CCC          | 9.2  | 22.3   |
| DDD          | 3.0  | 8.0    |
| EEE          | 4.4  | 11.5   |
| FFF          | 2.6  | 9.8    |
| GGG          | 3.8  | 13.2   |
| HHH          | 2.4  | 7.9    |
| III          | 6.8  | 21.2   |
| JJJ          | 0.7  | 2.1    |
| KKK          | 4.9  | 9.9    |
| LLL          | 2.7  | 17.1   |
| MMM          | 1.1  | 3.7    |
| NNN          | 4.7  | 12.8   |
| OOO          | 6.6  | 15.2   |
| PPP          | 2.6  | 8.6    |
| QQQ          | 1.7  | 6.0    |
| RRR          | 3.1  | 9.2    |
| SSS          | 4.7  | 11.7   |
| TTT          | 5.9  | 16.4   |
| UUU          | 5.7  | 13.7   |
| EAST POND    | 25.7 | 50.5   |
| WEST POND    | 27.2 | 56.8   |

MATCH LINE SEE SH 3



| Computer File Information   |                             |
|---|-----------------------------|
| Creation Date: 12-16-16   | Initials: CMD               |
| Last Modification Date: 12-16-16  | Initials: BG                |
| Full Path & Drawing File Name: V:\52876\active\187608731\Reports\Drainage\Exhibits\Pr Basin Exhibit |                             |
| Acad Ver. 2014  | Scale: see plan Units: Feet |

| Index of Revisions |  |
|--------------------|--|
|                    |  |
|                    |  |
|                    |  |
|                    |  |
|                    |  |

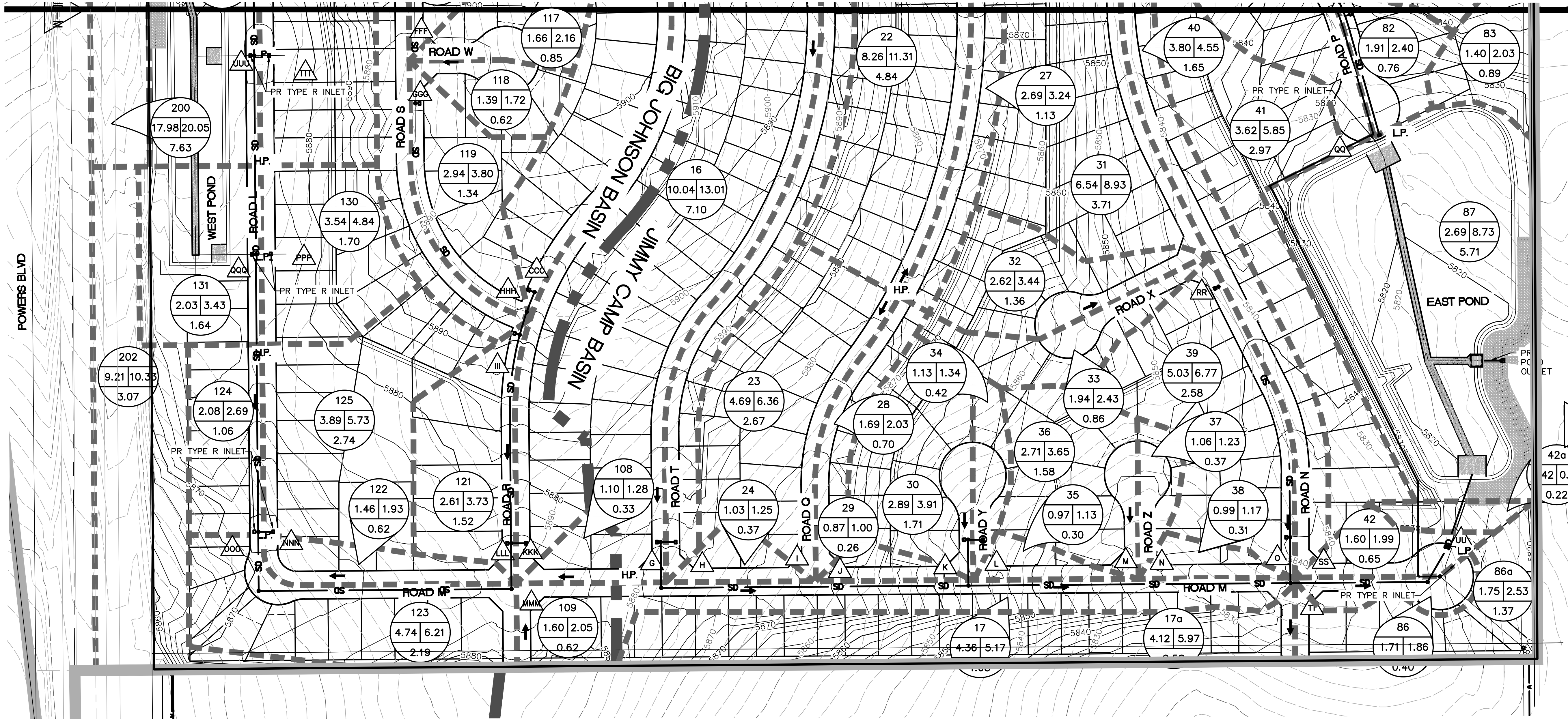
**EL PASO COUNTY** COLORADO

**Stantec**  
Stantec Consulting Inc.  
1110 Elton Drive  
Suite B  
Colorado Springs, CO 80907  
Tel. (719) 432-6889  
Fax.  
www.stantec.com

| WATERVIEW EAST<br>PROPOSED DRAINAGE PLAN |                   |
|--|-------------------|
| Designer: CMD                            | Structure Numbers |
| Detailer: BG                             |                   |
| Sheet Subset:                            |                   |

| Project No./Code    |
|---------------------|
| 181710214           |
| Sheet Number 2 of 3 |

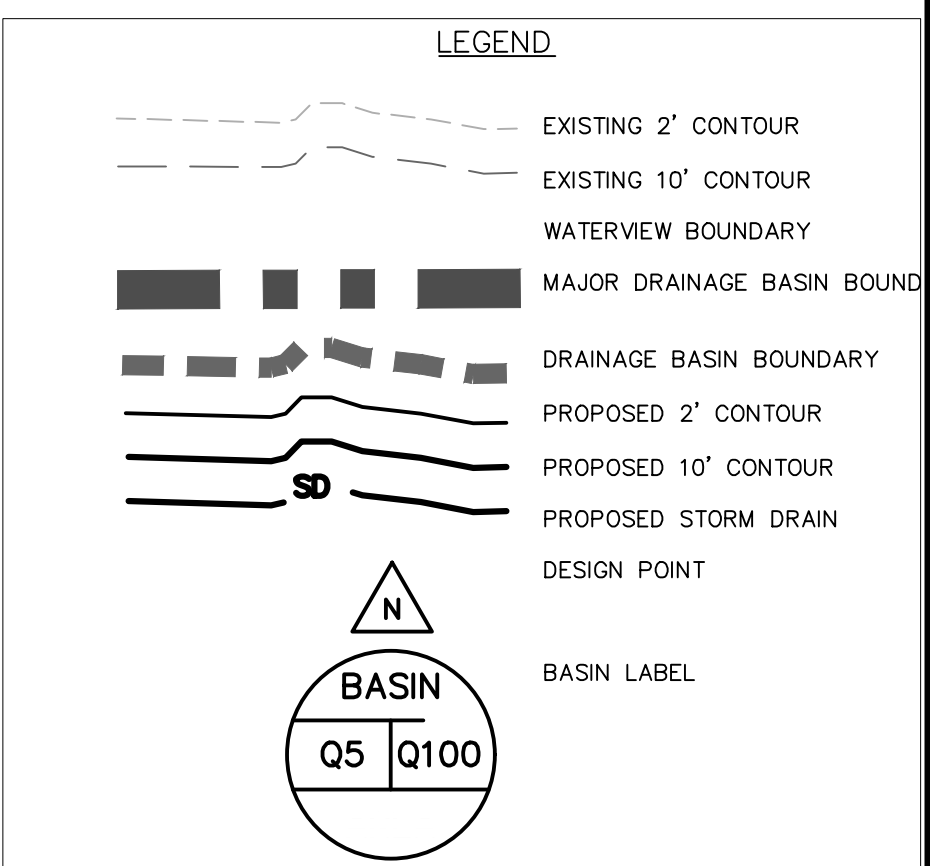
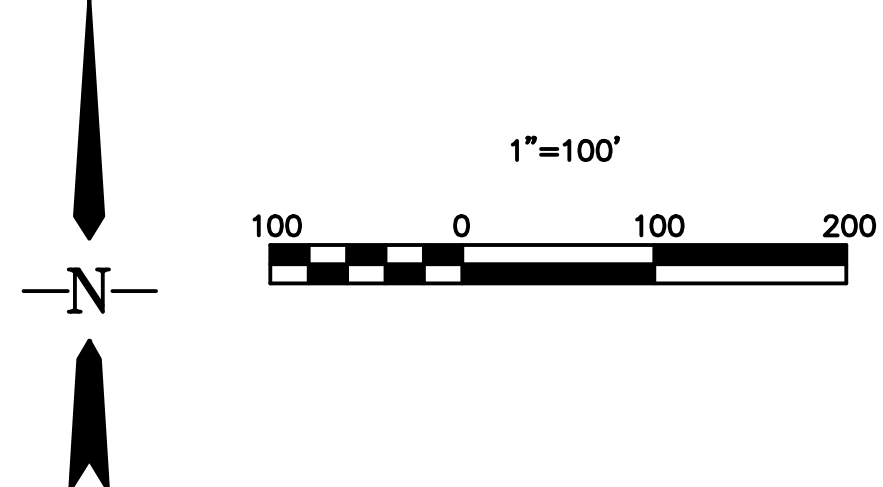
# MATCH LINE SEE SH 3



| DESIGN POINT | Q(5) | Q(100) |
|--------------|------|--------|
| A            | 32.3 | 56.3   |
| B            | 3.6  | 10.3   |
| C            | 2.8  | 8.0    |
| D            | 3.6  | 10.1   |
| E            | 7.3  | 19.6   |
| F            | 8.7  | 23.3   |
| G            | 12.2 | 22.4   |
| H            | 7.8  | 18.3   |
| I            | 5.2  | 14.7   |
| J            | 6.7  | 17.1   |
| K            | 9.9  | 22.3   |
| L            | 4.1  | 14.0   |
| M            | 1.4  | 8.4    |
| N            | 3.8  | 9.6    |
| O            | 5.4  | 17.0   |
| P            | 10.8 | 27.1   |
| Q            | 3.8  | 17.3   |
| R            | 0.7  | 6.6    |
| S            | 51.5 | 110.7  |
| T            | 3.7  | 22.6   |
| U            | 4.7  | 11.5   |
| V            | 5.2  | 12.6   |
| W            | 8.6  | 19.2   |
| X            | 2.0  | 9.6    |
| Y            | 5.0  | 11.6   |
| Z            | 9.7  | 22.2   |
| AA           | 12.5 | 28.0   |
| BB           | 10.3 | 24.8   |
| CC           | 3.5  | 9.2    |
| DD           | 4.8  | 12.4   |
| EE           | 8.0  | 20.0   |
| FF           | 9.2  | 22.8   |
| GG           | 8.9  | 27.9   |
| HH           | 8.1  | 30.5   |
| II           | 1.0  | 14.9   |
| JJ           | 7.1  | 17.3   |
| KK           | 8.0  | 19.2   |
| LL           | 8.4  | 25.5   |
| MM           | 12.1 | 20.3   |
| NN           | 6.3  | 15.5   |
| OO           | 3.3  | 10.4   |
| PP           | 3.0  | 10.6   |
| QQ           | 4.3  | 17.6   |
| RR           | 9.5  | 25.5   |
| SS           | 3.5  | 10.1   |
| TT           | 3.6  | 9.0    |
| UU           | 13.5 | 25.3   |
| VV           | 5.4  | 13.5   |
| AAA          | 3.0  | 8.6    |
| BBB          | 4.0  | 11.1   |
| CCC          | 9.2  | 22.3   |
| DDD          | 3.0  | 8.0    |
| EEE          | 4.4  | 11.5   |
| FFF          | 2.6  | 9.8    |
| GGG          | 3.8  | 13.2   |
| HHH          | 2.4  | 7.9    |
| III          | 6.8  | 21.2   |
| JJJ          | 0.7  | 2.1    |
| KKK          | 4.9  | 9.9    |
| LLL          | 2.7  | 17.1   |
| MMM          | 1.1  | 3.7    |
| NNN          | 4.7  | 12.8   |
| OOO          | 6.6  | 15.2   |
| PPP          | 2.6  | 8.6    |
| QQQ          | 1.7  | 6.0    |
| RRR          | 3.1  | 9.2    |
| SSS          | 4.7  | 11.7   |
| TTT          | 5.9  | 16.4   |
| UUU          | 5.7  | 13.7   |
| EAST POND    | 25.7 | 50.5   |
| WEST POND    | 27.2 | 56.8   |

Return the Pond summary table that was shown on the previous submittal.

POND SUMMARY TABLE ADDED BACK TO SHEET



| Computer File Information   |                             |
|---|-----------------------------|
| Creation Date: 12-16-16   | Initials: CMD               |
| Last Modification Date: 12-16-16  | Initials: BG                |
| Full Path & Drawing File Name: V:\52876\active\187608731\Reports\Drainage\Exhibits Pr Basin Exhibit |                             |
| Acad Ver. 2014  | Scale: see plan Units: Feet |

| Index of Revisions |  |
|--------------------|--|
|                    |  |
|                    |  |
|                    |  |
|                    |  |

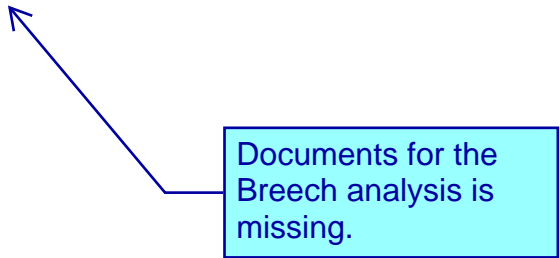
**EL PASO COUNTY** COLORADO

**Stantec**  
 Stantec Consulting Inc.  
 1110 Elkon Drive  
 Suite B  
 Colorado Springs, CO 80907  
 Tel. (719) 432-6889  
 Fax. (719) 432-6889  
 www.stantec.com

| WATERVIEW EAST PROPOSED DRAINAGE PLAN |                    |
|---------------------------------------|--------------------|
| Designer: CMD                         | Structure Numbers: |
| Detailer: BG                          |                    |
| Sheet Subset:                         |                    |

| Project No./Code    |
|---------------------|
| 181710214           |
| Sheet Number 3 of 3 |

**Appendix: Detention Pond Dam Breach Statement**



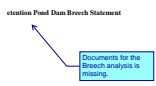
**BREECH ANALYSIS  
INFORMATION INCLUDED**

# Markup Summary

---

## Callout (1)

---



**Subject:** Callout  
**Page Label:** 115  
**Author:** dsdlaforce  
**Date:** 9/19/2018 3:42:16 PM  
**Color:** ■

Documents for the Breech analysis is missing.

## Text Box (1)

---



**Subject:** Text Box  
**Page Label:** 114  
**Author:** dsdlaforce  
**Date:** 9/19/2018 3:44:20 PM  
**Color:** ■

Return the Pond summary table that was shown on the previous submittal.