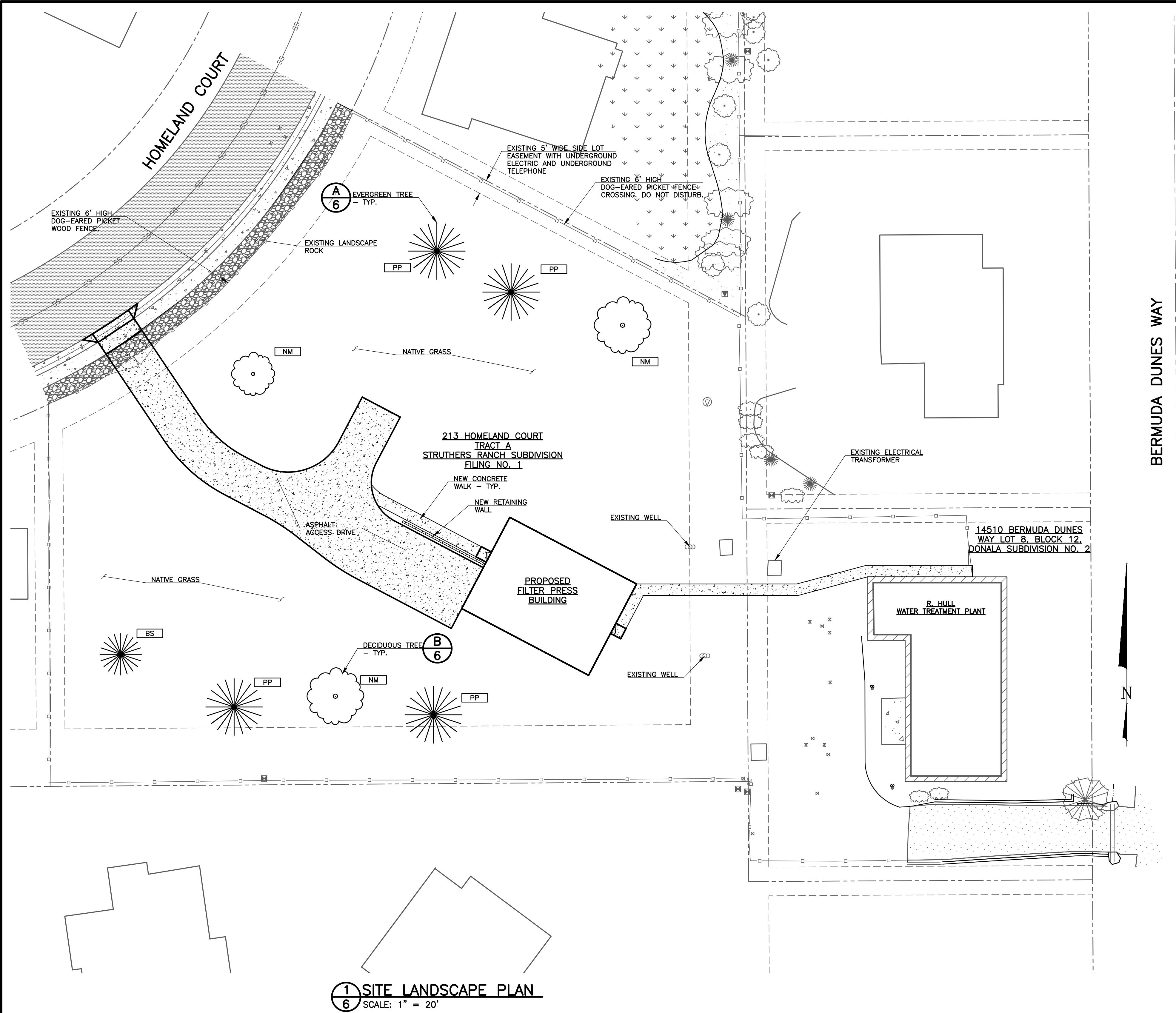
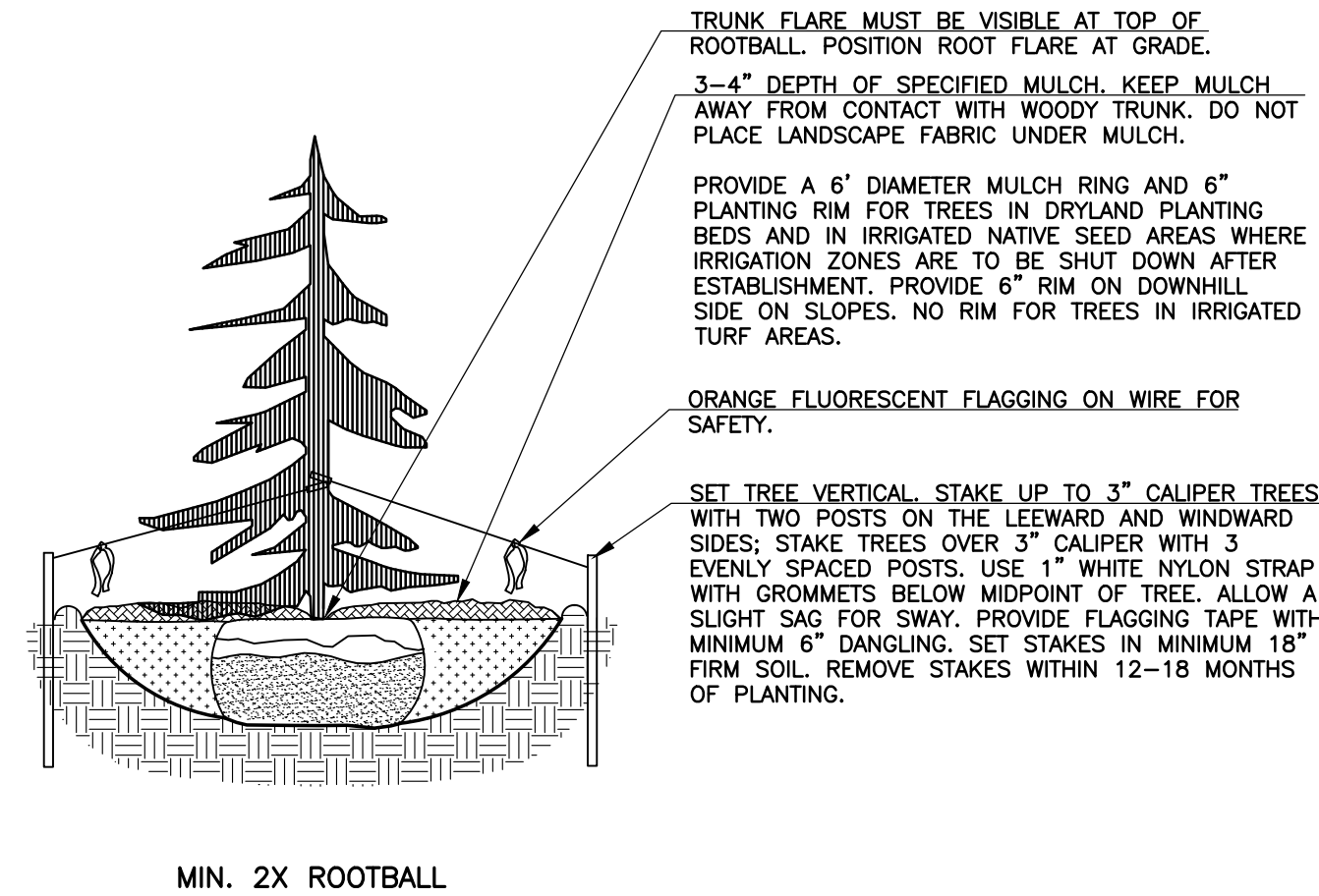


C:\DONALAI\18071030\Min Site Dev Plan\18071006.dwg, Site Landscape Plan, 3/22/2019 11:22:14 AM, ic, AutoCAD PDF (General Documentation).pc3, 1:1



1 SITE LANDSCAPE PLAN
6 SCALE: 1" = 20'

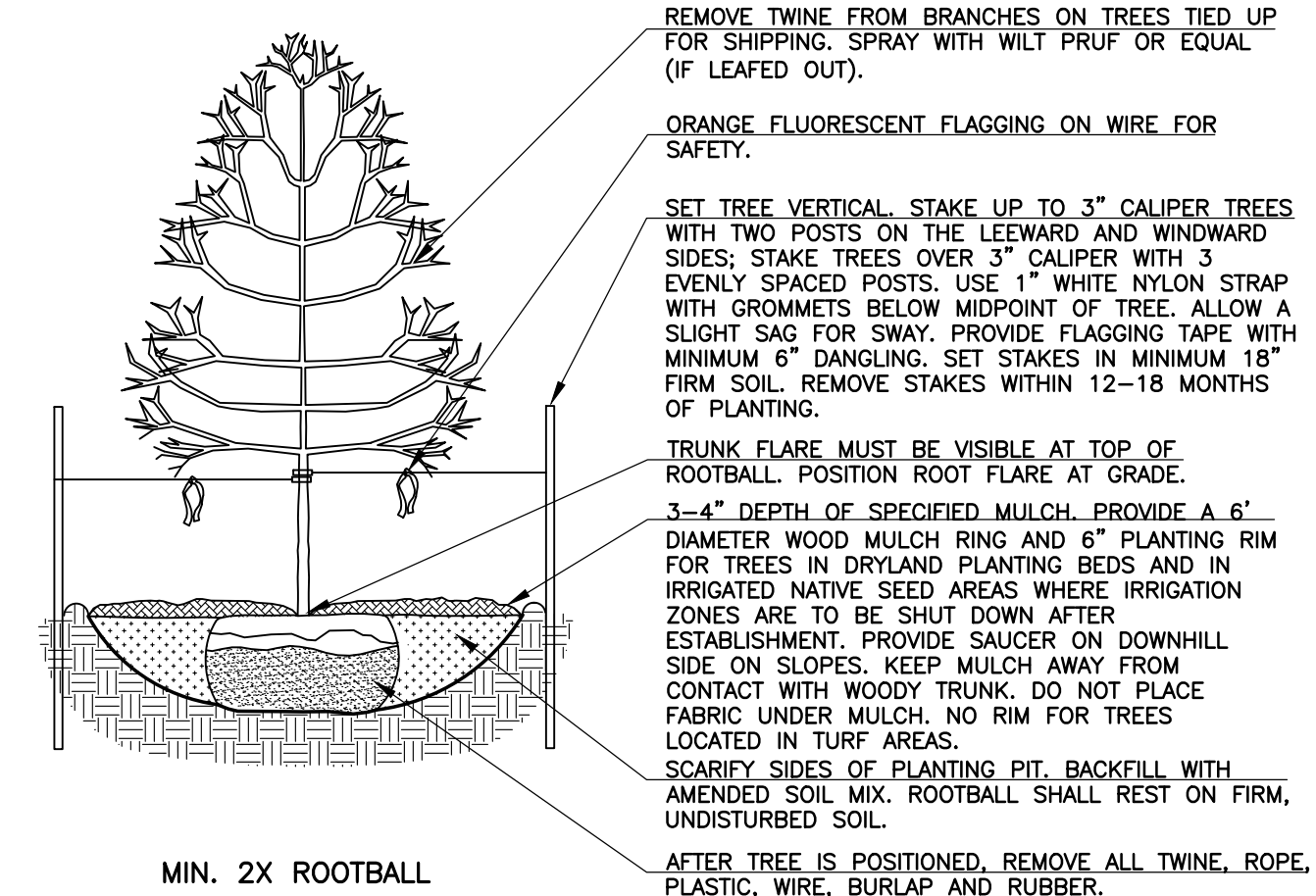


MIN. 2X ROOTBALL

- NOTES:
- DO NOT REMOVE OR CUT LEADER.
 - PRUNE ONLY DEAD OR BROKEN BRANCHES IMMEDIATELY PRIOR TO PLANTING.
 - DO NOT REMOVE ANY DOUBLE LEADER, UNLESS OTHERWISE DIRECTED BY OWNERS REPRESENTATIVE.
 - KEEP PLANTS MOIST AND SHADED UNTIL PLANTING.
 - AMENDED BACKFILL SHALL BE 1/3 COMPOST (PREFERABLY CLASSIFIED) AND 2/3 NATIVE AND/OR IMPORTED TOPSOIL.
 - MARK THE NORTH SIDE OF TREE IN THE NURSERY, AND ROTATE TREE TO FACE NORTH AT THE SITE WHENEVER POSSIBLE.
 - PINE AND SPRUCE TREES TO BE SPRAYED FOR IPS BARK BEETLE PRIOR TO PLANTING. COORDINATE WITH CITY FORESTRY FOR CURRENT INSECT AND DISEASE RECOMMENDATIONS PRIOR TO PLANTING.
 - ALL TREES TO BE DEEP WATERED AT TIME OF PLANTING.



A EVERGREEN TREE PLANTING DETAIL
6 SCALE: NONE



MIN. 2X ROOTBALL

- NOTES:
- MARK THE NORTH SIDE OF TREE IN THE NURSERY AND ROTATE TREE TO FACE NORTH AT THE SITE WHENEVER POSSIBLE.
 - AT TIME OF PLANTING, DO NOT REMOVE OR CUT LEADER AND PRUNE ONLY DEAD OR BROKEN BRANCHES, CROSS OVER BRANCHES, AND WEAK OR NARROW CROTCHES. SOME INTERIOR TWIGS AND LATERAL BRANCHES MAY BE PRUNED, HOWEVER, DO NOT REMOVE THE TERMINAL BUDS OF BRANCHES THAT EXTEND TO THE EDGE OF THE CROWN. STRUCTURAL PRUNING SHOULD NOT BEGIN UNTIL AFTER ESTABLISHMENT PERIOD, USUALLY TWO GROWING SEASONS.
 - KEEP PLANTS MOIST AND SHADED UNTIL PLANTING.
 - DO NOT FERTILIZE FOR AT LEAST ONE GROWING SEASON.
 - AMENDED BACKFILL SHALL BE 1/3 COMPOST (PREFERABLY CLASSIFIED) AND 2/3 NATIVE AND/OR IMPORTED TOPSOIL.
 - WRAP TRUNK ON EXPOSED SITES AND SPECIES WITH THIN BARK. USE ELECTRICAL OR DUCT TAPE, NOT TWINE.
 - COORDINATE WITH CITY FORESTRY FOR CURRENT INSECT AND DISEASE RECOMMENDATIONS PRIOR TO PLANTING.
 - DEEP WATER ALL PLANTS AT TIME OF PLANTING.



B DECIDUOUS TREE PLANTING DETAIL
6 SCALE: NONE

TREE SCHEDULE

TAG	QUANTITY	COMMON NAME	SCIENTIFIC NAME	CALIPER, MINIMUM
PP	4	PONDEROSA PINE	PINUS PONDEROSA	4"
BS	1	COLORADO BLUE SPRUCE	PICEA PENGENS	2"
NM	3	NORWAY MAPLE	ACER PLATANOIDES	2"

NATIVE GRASS MIX

APPLY BUFFALO GRASS, BLUE GRAMMA AND WESTERN WHEAT GRASS SEED MIX AT A RATE OF 9.0 POUNDS PER ACRE. SEW AND WATER PER SUPPLIERS RECOMMENDATIONS. MULCH WITH STRAW AT 4000 POUNDS PER ACRE.

SCALE VERIFICATION			
BAR IS ONE INCH ON ORIGINAL DRAWING			
IF NOT ONE INCH ON THIS SHEET ADJUST SCALES ACCORDINGLY			
THIS DRAWING IS THE PROPERTY OF GMS, INC., AND IS NOT TO BE REPRODUCED, MODIFIED OR USED FOR ANY OTHER PROJECT OR EXTENSION OF THIS PROJECT WITHOUT THE WRITTEN AGREEMENT WITH THIS COMPANY.			
2019 GMS, INC.			
NO.	DATE	REVISIONS	DESCRIPTION
1			

SITE LANDSCAPE PLAN MINOR SITE DEVELOPMENT PLAN DONALA WATER AND SANITATION DISTRICT

GMS, INC.
CONSULTING ENGINEERS
611 N. WEBER, SUITE 300
COLORADO SPRINGS, COLORADO 80903

DRAWN	DESIGNED	CHECKED	DATE	PROJECT NO.	GMS FILE NO.

SHEET

6 OF 7