

PREPARED BY:

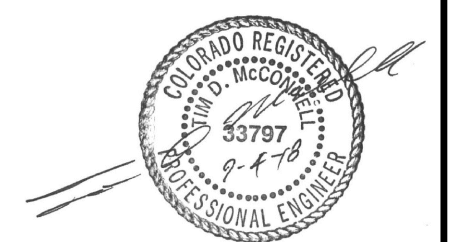
DREXEL, BARRELL & CO.
 Engineers • Surveyors
 3 SOUTH 7TH STREET
 COLORADO SPRGS, COLORADO 80905
 CONTACT: TIM D. McCONNELL, P.E.
 (719)260-0887
 BOULDER • COLORADO SPRINGS

CLIENT:
HUMMEL INVESTMENTS, LLC
 8117 PRESTON ROAD, SUITE 120
 DALLAS, TEXAS 75225
 (214) 416-9820

OVERLOT GRADING, POND SR4 & UTILITY
 CONSTRUCTION DRAWINGS FOR
FALCON
MARKETPLACE
 FALCON, COLORADO

ISSUE	DATE
1ST SUBMITTAL	6-20-17
RESUBMITTAL	9-6-18

DESIGNED BY: TDM
 DRAWN BY: KGV
 CHECKED BY: TDM
 FILE NAME:



PREPARED UNDER MY DIRECT
 SUPERVISION FOR AND ON BEHALF
 OF DREXEL, BARRELL & CO.

DRAWING SCALE:
 HORIZONTAL: 1"=50'
 VERTICAL: 1"=5'

**STORM SEWER
 PLAN &
 PROFILE**

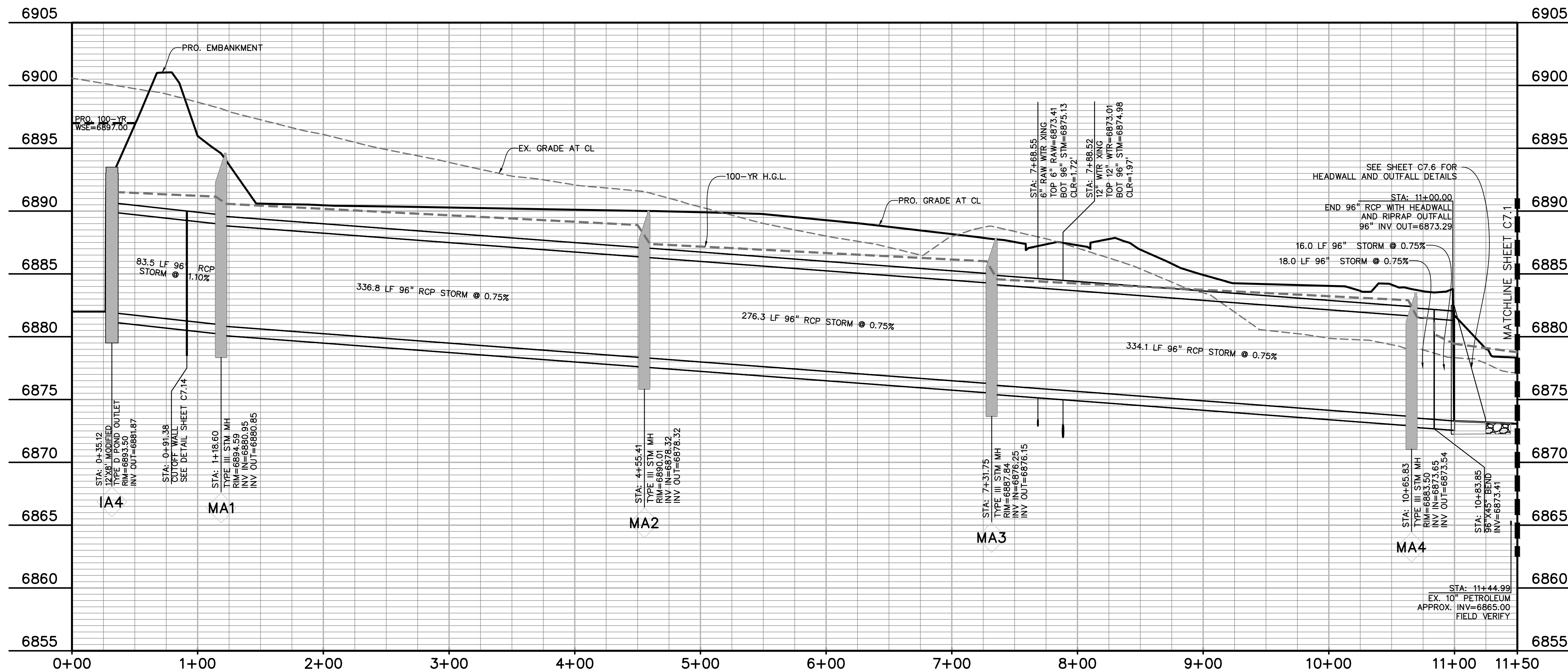
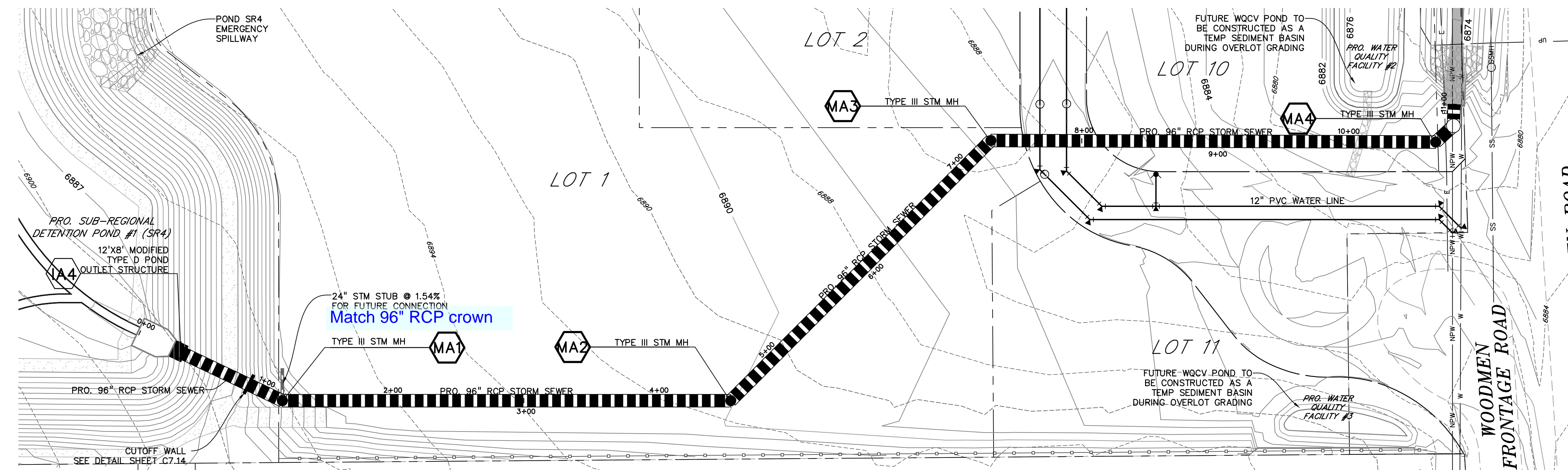
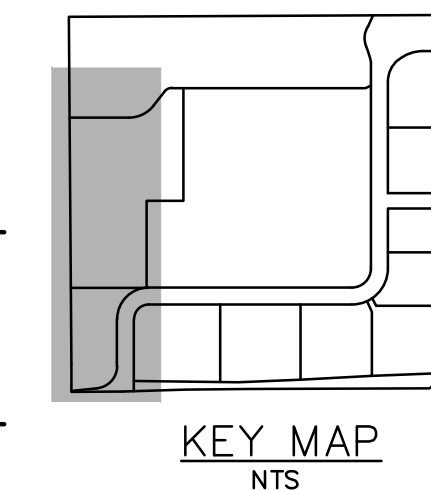
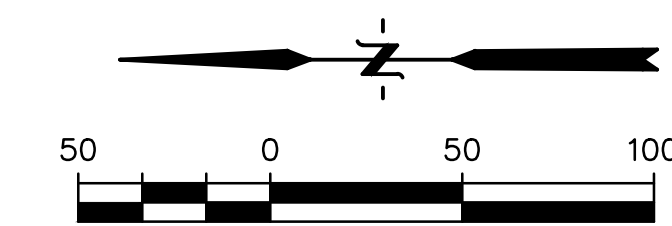
PROJECT NO. 20988-00CSCV
 DRAWING NO.

C7.0

SHEET: 7 OF 27

LEGEND

- PROPERTY LINE
- LOT LINE
- EASEMENT
- CURB & GUTTER
- SIDEWALK
- PRO. WATER LINE
- PRO. FIRE HYDRANT
- PRO. RAW WATER
- PRO. SANITARY SEWER
- PRO. STORM SEWER
- EX. OVERHEAD ELECTRIC
- EX. SANITARY SEWER
- EX. PETROLEUM
- EX. GAS
- EX. RAW WATER
- EX. WATER
- EX. STORM SEWER



POND #1 (SR4) OUTFALL TO OPEN CHANNEL

PREPARED BY:

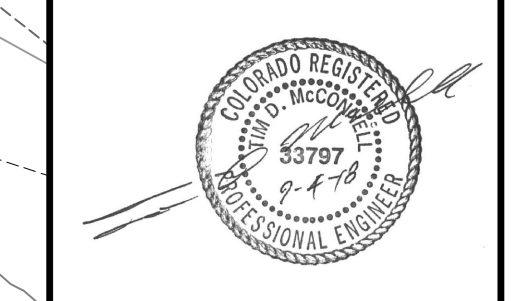
DREXEL, BARRELL & CO.
 Engineers-Surveyors
 3 SOUTH 7TH STREET
 COLORADO SPGS, COLORADO 80905
 CONTACT: TIM D. McCONNELL, P.E.
 (719)260-0887
 BOULDER • COLORADO SPRINGS

CLIENT:
HUMMEL INVESTMENTS, LLC
 8117 PRESTON ROAD, SUITE 120
 DALLAS, TEXAS 75225
 (214) 416-9820

OVERLOT GRADING, POND SR4 & UTILITY
 CONSTRUCTION DRAWINGS FOR
FALCON MARKETPLACE
 FALCON, COLORADO

ISSUE	DATE
1ST SUBMITTAL	6-20-17
RESUBMITTAL	9-6-18

DESIGNED BY: TDM
 DRAWN BY: KGV
 CHECKED BY: TDM
 FILE NAME:



PREPARED UNDER MY DIRECT SUPERVISION FOR AND ON BEHALF OF DREXEL, BARRELL & CO.

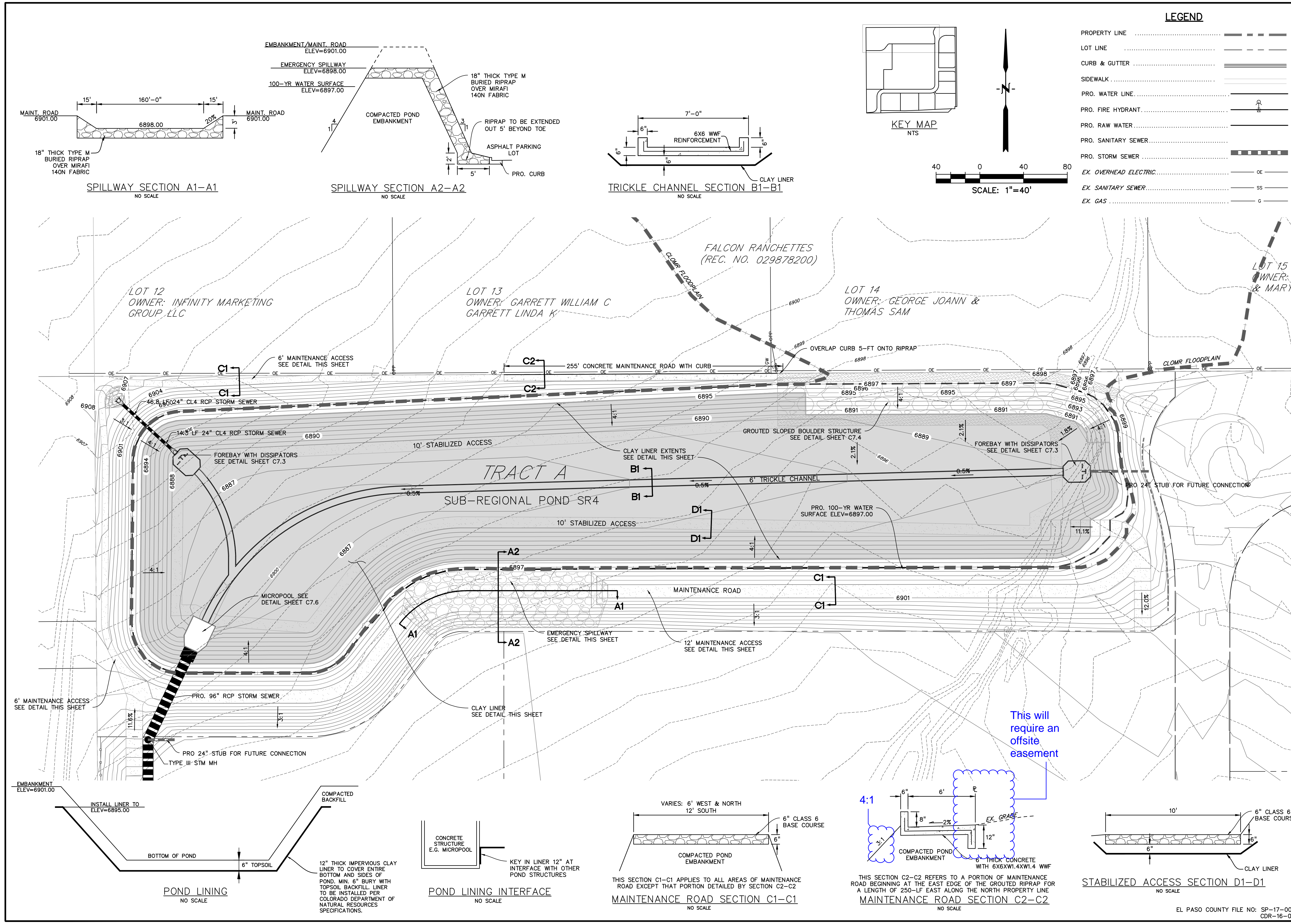
DRAWING SCALE:
 HORIZONTAL: 1"=40'
 VERTICAL: N/A

SUB-REGIONAL POND #1 (SR4)

PROJECT NO. 20988-00CSCV
 DRAWING NO.

C7.2

SHEET: 9 OF 27



UTILITY CONSTRUCTION DOCUMENTS

FALCON MARKETPLACE

SE 1/4 OF THE SE 1/4 OF SECTION 1, T13S, R65W OF THE 6TH P.M.
11680 E. WOODMEN ROAD, FALCON, COLORADO

Provide completely signed version.

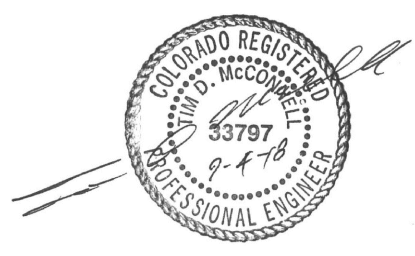
PREPARED BY:

DREXEL, BARRELL & CO.
Engineers • Surveyors
3 SOUTH 7TH STREET
COLORADO SPGS, COLORADO 80905
CONTACT: TIM D. McCONNELL, P.E.
(719)260-0887
BOULDER • COLORADO SPRINGS

CLIENT:
HUMMEL INVESTMENTS, LLC
8117 PRESTON ROAD, SUITE 120
DALLAS, TEXAS 75225
(214) 416-9820

OVERLOT GRADING, POND SR4 & UTILITY
CONSTRUCTION DRAWINGS FOR
FALCON MARKETPLACE
FALCON, COLORADO

ISSUE	DATE
1ST SUBMITTAL	6-20-17
RESUBMITTAL	9-6-18
DESIGNED BY:	TDM
DRAWN BY:	KGV
CHECKED BY:	TDM
FILE NAME:	20988-UT-CVR


PREPARED UNDER MY DIRECT
SUPERVISION FOR AND ON BEHALF
OF DREXEL, BARRELL & CO.

DRAWING SCALE:
HORIZONTAL: N/A
VERTICAL: N/A

UTILITY
COVER SHEET

PROJECT NO. 20988-00CSV
DRAWING NO.

C8.0

SHEET: 15 OF 27

WATER AND SEWER MAIN EXTENSIONS GENERAL NOTES

- ALL UTILITY CONSTRUCTION TO BE CONDUCTED IN CONFORMANCE WITH CURRENT WOODMEN HILLS METROPOLITAN DISTRICT (WHMD, THE DISTRICT) SPECIFICATIONS.
- ALL PLANS ON THE JOB SITE SHALL BE SIGNED BY THE DISTRICT AND THE DISTRICT'S ENGINEER. ANY REVISION TO THE PLANS SHALL BE SO NOTED WITH THE OLD DRAWING MARKED NOT VALID.
- ALL STATIONING IS CENTER LINE UNLESS OTHERWISE NOTED. ALL ELEVATIONS ARE CENTER LINE UNLESS OTHERWISE NOTED.
- ALL MATERIALS AND WORKMANSHIP SHALL BE SUBJECT TO INSPECTION BY THE DISTRICT. THE DISTRICT RESERVES THE RIGHT TO ACCEPT OR REJECT ANY SUCH MATERIALS AND WORKMANSHIP THAT DOES NOT CONFORM TO ITS STANDARDS AND SPECIFICATIONS.
- ALL WATER AND SEWER SERVICE LOCATIONS SHALL BE CLEARLY MARKED ON EITHER THE CURB HEAD OR THE FACE OF THE CURB, WITH AN "S" FOR SEWER AND A "W" FOR WATER.
- DUCTILE IRON PIPES, INCLUDING FITTINGS, VALVES AND FIRE HYDRANTS, SHALL BE WRAPPED WITH POLYETHYLENE TUBING, DOUBLE BONDED AT EACH JOINT AND ELECTRICALLY ISOLATED. BONDING AND ANODE CONNECTIONS SHALL BE THOROUGHLY COATED WITH BITUMINOUS COATINGS.
- ALL DUCTILE IRON PIPE LESS THAN 12 INCHES AND FITTINGS SHALL HAVE CATHODIC PROTECTION USING TWO NO. 6 WIRES WITH 17 LB. MAGNESIUM ANODES EVERY 400 FEET AND 9 LB. MAGNESIUM ANODES AT EACH FITTING. ALL DUCTILE IRON PIPE 12 INCHES AND GREATER AND FITTINGS SHALL HAVE CATHODIC PROTECTION USING TWO NO. 6 WIRES WITH 17 LB. MAGNESIUM ANODES EVERY 300 FEET AND 9 LB. MAGNESIUM ANODES AT EACH FITTING.
- ALL PIPE MATERIAL, BACKFILL AND INSTALLATION SHALL CONFORM TO THE APPLICABLE SPECIFICATIONS OF THE CITY OF COLORADO SPRINGS, COLORADO DEPARTMENT OF TRANSPORTATION, EL PASO COUNTY DEPARTMENT OF TRANSPORTATION, COLORADO SPRINGS UTILITIES AND THE GEOTECHNICAL ENGINEER.
- COMPACTION TESTS SHALL BE 95% STANDARD PROCTOR AS DETERMINED BY ASTM D698, UNLESS OTHERWISE APPROVED BY THE DISTRICT OR HIGHER STANDARD AS IMPOSED BY ANOTHER AGENCIES HAVING RIGHT-OF-WAY JURISDICTION. THIS SHALL INCLUDE ALL VALVES, FIRE HYDRANT RUNS, WATER & SEWER SERVICE LINES AND MANHOLES. ALL REPORTS SHALL BE SUBMITTED TO THE DISTRICT FOR REVIEW AND APPROVAL.
- THE LOCATION OF ALL EXISTING UTILITIES SHOWN ON THE DRAWINGS ARE APPROXIMATE ONLY. THE LOCATION OF ALL UTILITIES SHALL BE FIELD VERIFIED PRIOR TO COMMENCING CONSTRUCTION ACTIVITIES. THE DISTRICT SHALL BE NOTIFIED OF ANY DEVIATIONS TO THE LINE AND/OR GRADE AS DEPICTED ON THE PLANS. CONTRACTOR SHALL SUBMIT TO THE DISTRICT AND THE ENGINEER OF RECORD A REPORT OF THE FIELD VERIFIED INFORMATION PRIOR TO THE START OF CONSTRUCTION.
- ALL BENDS SHALL BE FIELD STAKED PRIOR TO THE START OF CONSTRUCTION.
- BENDS, DEFLECTION & CUT PIPE LENGTHS SHALL BE USED TO HOLD HORIZONTAL ALIGNMENT OF SEWER AND WATER LINES TO NO MORE THAN 0.5' FROM THE DESIGNED ALIGNMENT. CONSTRUCTION STAKES TO BE AT 25' INTERVALS ALONG CURVES TO ASSURE LOCATION OF PIPE LINE CONSTRUCTION.
- AT ALL LOCATIONS WHERE CAP AND STUB IS NOTED ON DRAWINGS, PROVIDE A PLUG AT THE END OF THE PIPE JOINT NEAREST THE SPECIFIED STATION. PROVIDE A REVERSE ANCHOR AT ALL WATER LINE PLUGS.
- ALL UNUSED SALVAGED WATER UTILITY MATERIAL SHALL BE RETURNED TO THE METROPOLITAN DISTRICT AS REQUESTED.
- AT THE CONTRACTOR'S EXPENSE, ALL UTILITY MAINS SHALL BE SUPPORTED AND PROTECTED SUCH THAT THEY SHALL FUNCTION CONTINUOUSLY DURING CONSTRUCTION OPERATIONS. SHOULD A UTILITY MAIN FAIL AS A RESULT OF THE CONTRACTOR'S OPERATION, IT SHALL BE REPLACED IMMEDIATELY BY THE CONTRACTOR OR BY THE DISTRICT AT FULL COST OF LABOR AND MATERIALS TO THE CONTRACTOR/DEVELOPER.
- PUMPING OR BYPASS OPERATIONS SHALL BE REVIEWED AND APPROVED BY BOTH THE DISTRICT AND THE DISTRICT ENGINEER PRIOR TO EXECUTION.
- THE CONTRACTOR SHALL REPLACE OR REPAIR DAMAGE TO ALL SURFACE IMPROVEMENTS, INCLUDING BUT NOT LIMITED TO FENCES, LANDSCAPING, CURB AND GUTTER AND/OR ASPHALT THAT MAY BE CAUSED DURING CONSTRUCTION.
- ALL CONTRACTORS WORKING ON OR NEAR A WATER OR SEWER FACILITY (TO INCLUDE SERVICE LINES) SHALL HAVE LIABILITY INSURANCE NAMING THE DISTRICT AS AN ADDITIONAL INSURED AND SHALL PROVIDE A CURRENT COPY OF WORKERS COMPENSATION INSURANCE ON FILE WITH THE DISTRICT. NO WORK CAN PROCEED WITHOUT CURRENT CERTIFICATES ON FILE AT THE DISTRICTS' OFFICE.
- THE CONTRACTOR SHALL NOTIFY THE DISTRICT AND ALL AFFECTED UTILITY COMPANIES ADJACENT TO THE PROPOSED UTILITY CONSTRUCTION A MINIMUM OF 48 HOURS AND A MAXIMUM OF 96 HOURS PRIOR TO THE START OF CONSTRUCTION. A WEEKLY CONSTRUCTION MEETING SHALL BE REQUIRED WITH THE CONTRACTOR, DISTRICT ENGINEER AND ALL OTHER PARTIES AS DEEMED NECESSARY BY THE DISTRICT.
- COMMENCEMENT OF CONSTRUCTION OF WATER/SEWER SYSTEMS WITHIN METROPOLITAN DISTRICT:
- PRIOR TO THE START OF CONSTRUCTION, A PRE-CONSTRUCTION MEETING IS REQUIRED A MINIMUM OF 48 HOURS IN ADVANCE OF COMMENCEMENT OF WORK. A REPRESENTATIVE OF THE OWNER OR DEVELOPER, A REPRESENTATIVE OF THE CONTRACTOR AND DESIGN ENGINEER ARE REQUIRED TO ATTEND. CONTACT THE DISTRICT TO SCHEDULE THE PRECONSTRUCTION MEETING. NO PRE-CONSTRUCTION MEETING CAN BE SCHEDULED PRIOR TO FOUR (4) SIGNED/APPROVED PLAN SETS ARE RECEIVED BY THE DISTRICT.
- THE CONTRACTOR IS REQUIRED TO NOTIFY THE DISTRICT A MINIMUM OF 48 HOURS AND A MAXIMUM OF 2 WEEKS PRIOR TO THE START OF CONSTRUCTION. THE CONTRACTOR SHALL ALSO NOTIFY AFFECTED UTILITY COMPANIES AT LEAST 48 HOURS PRIOR TO THE START OF CONSTRUCTION ADJACENT TO THE KNOWN UTILITY LINES.
- TESTING OF FACILITIES:
- THE CONTRACTOR SHALL NOTIFY THE DISTRICT A MINIMUM OF 48 HOURS AND A MAXIMUM OF 96 HOURS PRIOR TO THE START OF ANY TESTING.
- ALL SECTIONS OF WATER LINE ARE TO MEET THE FOLLOWING PRESSURE TESTING REQUIREMENTS
TEST 100 % OF ALL LINES
MUST PASS PRESSURE TEST TO 200 PSI FOR TWO HOURS (UNLESS OTHERWISE APPROVED ON THE PLANS).
- ALL SANITARY SEWER FACILITIES ARE TO MEET THE FOLLOWING TESTING REQUIREMENTS
ALL LINES SHALL BE JET CLEANED PRIOR TO VACUUM OR PRESSURE TESTING
ALL MANHOLES SHALL BE VACUUM TESTED WITH DISTRICT STAFF PRESENT PRIOR TO CCTV INSPECTION.
SEWER MAINS TO BE PRESSURE TEST PRIOR TO CCTV INSPECTION
ALL LINES SHALL BE CCTV INSPECTED AND VIDEO SHALL TO BE SUBMITTED TO THE DISTRICT FOR REVIEW AND APPROVAL.
- PRELIMINARY ACCEPTANCE SHALL BE DEFINED AS THE POINT IN TIME THAT THE DISTRICT ACCEPTS THE FACILITY FOR USE. ALL SURFACE IMPROVEMENTS AND RESTORATION SHALL BE COMPLETED WITHIN 30 DAYS OF COMMENCEMENT. SHOULD THE CONTRACTOR FAIL TO COMPLETE ALL SURFACE IMPROVEMENTS AND RESTORATION WITHIN 30 DAYS OF COMMENCEMENT OF SERVICE, THE DISTRICT, AT THEIR DISCRETION, MAY ELECT TO COMPLETE THE IMPROVEMENTS AT THE CONTRACTORS COST.
- FINAL ACCEPTANCE BY THE DISTRICT OF ANY LINE OR SYSTEM SHALL NOT OCCUR UNTIL COMPLETION OF FINAL ASPHALT LAYERS AND/OR FINAL COMPLETION AND/OR RESTORATION OF ALL SURFACE IMPROVEMENTS. THE WARRANTY PERIOD FOR ALL FACILITIES PRIOR TO FINAL ACCEPTANCE SHALL BE 24 MONTHS COMMENCING AFTER PRELIMINARY ACCEPTANCE.
- ACCEPTANCE:
- THE DISTRICT MAY GIVE PRELIMINARY ACCEPTANCE ONCE ALL OF THE TESTS ON ALL THE LINES HAVE BEEN COMPLETED AND A WALK-THRU HAS OCCURRED.
- A SECOND ACCEPTANCE MAY OCCUR ONCE FIRST LIFT OF ASPHALT GOES DOWN AND A SECOND WALK-THRU OF THE SYSTEM OCCURS. IF ALL FACILITIES ARE CLEAN AND ACCESSIBLE, A FINAL ACCEPTANCE MAY OCCUR (THE DISTRICT MAY REQUIRE CLEANING AND RE-VIDEO OF THE SYSTEM, DEPENDING ON THE SEVERITY OF THE CONTAMINATION).
- ALL WATER AND SEWER MAINS, INCLUDING SERVICE LINES, SHALL HAVE "AS-BUILT" DRAWINGS PREPARED AND APPROVED PRIOR TO PRELIMINARY ACCEPTANCE BY THE DISTRICT.
- ALL COMMERCIAL/BUSINESS DEVELOPMENTS SHALL HAVE AN EIGHT INCH (MIN.) WATER MAIN LOOPED THROUGH THE PROPOSED PROPERTY WITH GATE VALVES LOCATED WHERE THE MAIN ENTERS THE PROPERTY LINE. AN EIGHT INCH SEWER MAIN SHALL BE INSTALLED FOR SERVICE TO COMMERCIAL/BUSINESS DEVELOPMENTS, AND A MANHOLE SHALL BE LOCATED WHERE THE MAIN ENTERS THE PROPERTY. THE END OF THE MAINS SHALL BE MARKED WITH THE APPROPRIATE COLORED CARBONITE MARKER ALONG WITH TRACER WIRE.
- AFTER REVIEW AND APPROVAL OF PLANS FOR THE EXTENSION OF LINES, FACILITIES AND/OR SERVICES, CONSTRUCTION MUST BE COMMENCED WITHIN 18 MONTHS FOR RESIDENTIAL SUBDIVISIONS AND 12 MONTHS FOR ANY COMMERCIAL INSTALLATIONS.
- INSPECTION FEES: CALL THE DISTRICT (719-495-2500) FOR FEE SCHEDULE.



VICINITY MAP
NOT TO SCALE

WATER SYSTEM INSTALLATION NOTES

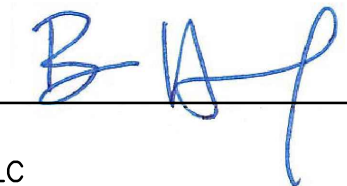
- ALL WATER AND FORCE MAIN PIPE SHALL BE AWWA C900 PVC, OR EQUAL, PRESSURE CLASS 200. ALL WATER AND FORCE MAIN FITTINGS SHALL HAVE MECHANICAL RESTRAINTS AND THRUST BLOCKS. ALL WATER AND FORCE MAIN PIPE SHALL HAVE A MINIMUM COVER DEPTH OF FIVE AND ONE-HALF (5.5) FEET.
- ALL WATER VALVES ASSOCIATED WITH THE POTABLE WATER SYSTEM SHALL BE OPEN CLOCKWISE. ALL VALVES INSTALLED IN LANDSCAPED AREAS AND/OR NOT WITHIN PAVED STREETS SHALL BE MARKED WITH CARBONITE MARKERS. ALL VALVES ASSOCIATED WITH THE RAW WATER SYSTEM SHALL BE OPEN COUNTERCLOCKWISE AND MARKED WITH CARBONITE MARKERS AS APPLICABLE.
- THE DEVELOPER OR HIS ENGINEER SHALL LOCATE ALL FIRE HYDRANTS AND SERVICE STUB OUTS FOR FUTURE DEVELOPMENT. ANY REQUIRED REALIGNMENT, (HORIZONTAL OR VERTICAL), SHALL BE AT THE EXPENSE OF THE DEVELOPER. FIRE HYDRANT LOCATION SHALL BE REVIEWED AND APPROVED BY THE APPLICABLE FIRE AUTHORITY.
- FIRE HYDRANTS SHALL BE OPEN RIGHT WITH 7/8" X 7/8" SQUARE TAPERED ALONG WITH SERVICE CAPS. LUBRICATION (GREASE). ACCEPTABLE BRANDS ARE AMERICAN AVK SERIES 2700 (MODERN) AND MUELLER SUPER CENTURION 250.
- ALL MAIN LINES (PVC & DUCTILE IRON) SHALL BE INSTALLED WITH COATED #12 TRACER WIRE WITH TEST STATIONS AT INTERVALS NO GREATER THAN 500 FT (VALVE BOXES CAN BE USED AT INTERSECTIONS AND SERVICE STUBS).
- CONTRACTOR SHALL MAKE CONNECTIONS TO EXISTING WATER LINE WITHOUT SHUTDOWN, OR ELSE NOTIFY THE DISTRICT OF ANY SERVICE SHUTDOWNS NECESSARY TO CONNECT TO EXISTING LINES.
- IRRIGATION SERVICES SHALL HAVE A STOP AND WASTE CURB STOP VALVE INSTALLED ALONG WITH TRACER WIRE EXTENDING BACK TO THE MAIN LINE.
- COMMENCEMENT OF USE OF WATER LINES AND/OR SYSTEMS:
- NO WATER FACILITY SHALL BE PLACED IN SERVICE UNTIL AFTER THE COMPLETION OF ALL PRESSURE TESTING, FLUSHING, BAC-T TESTING, COMPACTION TESTING, AND AS-BUILT DRAWINGS ARE SUBMITTED AND APPROVED BY THE DISTRICT.
- NO WATER FACILITY SHALL BE PLACED IN SERVICE UNTIL ALL SERVICE LINES ARE COMPLETED AND THE FIRST LIFT OF ASPHALT IS COMPLETED OVER THE LINE. IN THE CASE WHERE NO ASPHALT IS TO BE PLACED OVER THE LINE, SURFACE IMPROVEMENTS SHALL BE COMPLETED PRIOR TO USE OF THE FACILITY.
- ALL EASEMENTS (PLATTED OR DEEDED) ARE DEDICATED, EXECUTED BY THE DISTRICT, AND RECORDED.

WASTEWATER SYSTEM INSTALLATION NOTES

- SANITARY SEWER LENGTHS ARE MH CENTER-MH CENTER. ALL SANITARY SEWER PIPES SHALL BE SDR 35 PVC OR EQUAL. SEWER LINES MAY NOT EXCEED 7% GRADE FOR ANY SIZE WITHOUT PRIOR APPROVAL OF THE DISTRICT. ALL NEWLY CONSTRUCTED RESIDENTIAL SANITARY SEWER TAPS SHALL USE PRE-MANUFACTURED IN-LINE PVC PUSH-ON WYES. TAPPING SADDLES MAY ONLY BE USED FOR TAPPING PRE-EXISTING MAINS.
- ALL SANITARY SEWER MANHOLES SHALL BE WRAPPED WITH RU116 - RUBR-NEK JOINT WRAP OR EQUIVALENT AND COATED.
- COMMENCEMENT OF USE OF SEWER LINES AND/OR SYSTEMS:
- NO SANITARY SEWER FACILITY SHALL BE PLACED IN SERVICE UNTIL THE COMPLETION OF ALL JET CLEANING, PRESSURE TESTING, VACUUM TESTING, CCTV INSPECTION, COMPACTION TESTING, AND AS-BUILT DRAWINGS ARE SUBMITTED AND APPROVED BY THE DISTRICT.
- NO SANITARY SEWER FACILITY SHALL BE PLACED IN SERVICE UNTIL ALL SERVICE LINES ARE COMPLETED AND THE FIRST LIFT OF ASPHALT IS COMPLETED OVER THE LINE. IN THE CASE WHERE NO ASPHALT IS TO BE PLACED OVER THE LINE, ANY REQUIRED SURFACE IMPROVEMENTS SHALL BE COMPLETED PRIOR TO USE OF THE FACILITY.
- ALL NECESSARY EASEMENTS (PLATTED OR DEEDED) ARE DEDICATED, EXECUTED BY THE DISTRICT, AND RECORDED.
- DOWNSTREAM PLUG CAN BE REMOVED ONCE FIRST LIFT OF ASPHALT IS DOWN AND THE ABOVE REQUIREMENTS ARE MET.

WATER AND SEWER MAIN EXTENSIONS

ANY CHANGES OR ALTERATIONS AFFECTING THE GRADE, ALIGNMENT, ELEVATION AND/OR DEPTH OF COVER OF ANY WATER OR SEWER MAINS OR OTHER APPURTENANCES SHOWN ON THIS DRAWING SHALL BE THE RESPONSIBILITY OF THE OWNER/DEVELOPER. THE OWNER/DEVELOPER SHALL BE RESPONSIBLE FOR ALL OPERATIONAL DAMAGES AND DEFECTS IN INSTALLATION AND MATERIAL FOR MAINS AND SERVICES FROM THE DATE OF APPROVAL UNTIL FINAL ACCEPTANCE IS ISSUED.


BEN HUMMEL
LG HI FALCON, LLC
3953 MAPLE AVE, #290
DALLAS, TX 75219
DATE: 9-4-18

FIRE AUTHORITY APPROVAL

THE NUMBER OF FIRE HYDRANTS AND HYDRANT LOCATIONS SHOWN ON THIS WATER INSTALLATION PLAN ARE CORRECT AND ADEQUATE TO SATISFY THE FIRE PROTECTION REQUIREMENTS AS SPECIFIED BY THE FIRE DISTRICT SERVING THE PROPERTY NOTED ON THE PLANS.

FIRE PROTECTION DISTRICT: FALCON FIRE PROTECTION DISTRICT
SIGNED: _____ DATE: _____
FIRE PROTECTION DISTRICT

DISTRICT APPROVALS

THE WOODMEN HILLS METROPOLITAN DISTRICT RECOGNIZES THE DESIGN ENGINEER AS HAVING RESPONSIBILITY FOR THE DESIGN AND HAS LIMITED ITS SCOPE OF REVIEW ACCORDINGLY.

WOODMEN HILLS METROPOLITAN DISTRICT
WATER DESIGN APPROVAL
DATE: _____ BY: _____
PROJECT NO. _____
IN CASE OF ERRORS OR OMISSIONS WITH THE WATER DESIGN AS SHOWN ON THIS DOCUMENT THE STANDARDS AS DEFINED IN THE "RULES AND REGULATIONS FOR INSTALLATION OF WATER MAINS AND SERVICES" SHALL RULE.
APPROVAL EXPIRES 180 DAYS FROM DESIGN APPROVAL.

THE WOODMEN HILLS METROPOLITAN DISTRICT RECOGNIZES THE DESIGN ENGINEER AS HAVING RESPONSIBILITY FOR THE DESIGN AND HAS LIMITED ITS SCOPE OF REVIEW ACCORDINGLY.

WOODMEN HILLS METROPOLITAN DISTRICT
WASTEWATER DESIGN APPROVAL
DATE: _____ BY: _____
PROJECT NO. _____
IN CASE OF ERRORS OR OMISSIONS WITH THE WATER DESIGN AS SHOWN ON THIS DOCUMENT THE STANDARDS AS DEFINED IN THE "RULES AND REGULATIONS FOR INSTALLATION OF WATER MAINS AND SERVICES" SHALL RULE.
APPROVAL EXPIRES 180 DAYS FROM DESIGN APPROVAL.

BENCHMARK

ELEVATIONS ARE BASED ON COLORADO SPRINGS UTILITIES FACILITIES INFORMATION SYSTEM (FIMS) "BLT 167". A 2" ALUMINUM CAP IN CONCRETE LOCATED ON AN ELECTRIC TRANSFORMER PAD AT THE SOUTHEAST CORNER OF WOODMEN ROAD AND MERIDIAN ROAD, WITH AN ELEVATION OF 6873.18 (NGVD 29).

LEGAL DESCRIPTION

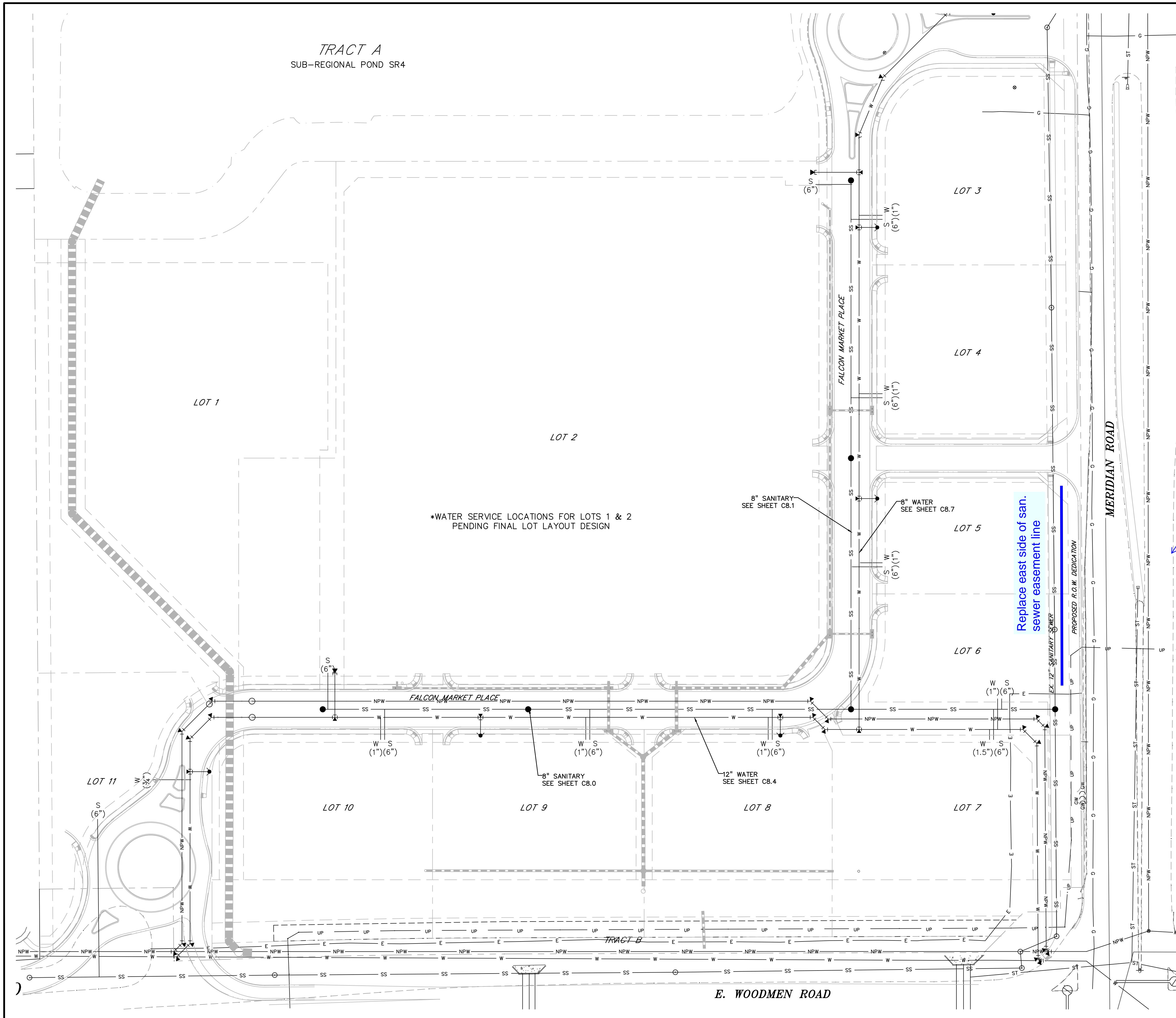
THE SOUTHEAST QUARTER OF THE SOUTHEAST QUARTER OF SECTION 1, TOWNSHIP 13 SOUTH, RANGE 65 WEST OF THE SIXTH PRINCIPAL MERIDIAN, TOGETHER WITH THAT PORTION OF BLOCK 1, TOWN OF FALCON, LYING WITHIN THE SOUTHEAST QUARTER OF THE SOUTHEAST QUARTER OF SECTION 1, TOWNSHIP 13 SOUTH, RANGE 65 WEST OF THE SIXTH PRINCIPAL MERIDIAN, COUNTY OF EL PASO, STATE OF COLORADO.

EXCEPT THOSE PORTIONS CONVEYED TO WOODMEN ROAD METROPOLITAN DISTRICT BY WARRANTY DEED RECORDED APRIL 19, 2004 AT RECEPTION NO. 204062427 AND PERSONAL REPRESENTATIVE'S DEED RECORDED SEPTEMBER 7, 2007 AT RECEPTION NO. 207116129, EL PASO COUNTY, COLORADO RECORDS.

FLOODPLAIN STATEMENT

THE EFFECTIVE FLOODPLAIN ZONE A LIMITS ARE DEFINED ON THE FIRM FOR EL PASO COUNTY, COLORADO AND UNINCORPORATED AREAS, MAP NUMBER 8041C0575F, EFFECTIVE DATE MARCH 17, 1997. FEMA ISSUED PRELIMINARY FIRM MAP 08041C0553G DATED JULY 29, 2015 TO REFLECT LIMITS MODIFIED BY LOMR CASE NO. 12-08-0579P (FEBRUARY 28, 2013).

A CLOMR TO MODIFY THE FLOODPLAIN HAS BEEN SUBMITTED AND APPROVED BY FEMA, CASE NO. 17-08-0074R (MAY 26, 2017).



LEGEND

PROPERTY LINE	---
LOT LINE	- - - -
EASEMENT	---
CURB & GUTTER	====
SIDEWALK	----
PRO. WATER LINE	W
PRO. FIRE HYDRANT	●
PRO. RAW WATER	---
PRO. SANITARY SEWER	SS
PRO. STORM SEWER	ST
PRO. SANITARY SERVICE	SS
PRO. WATER SERVICE	W
EX. OVERHEAD ELECTRIC	OE
EX. SANITARY SEWER	SS
EX. PETROLEUM	UP
EX. GAS	G
EX. RAW WATER	NPW
EX. WATER	W
EX. STORM SEWER	ST

PREPARED BY:

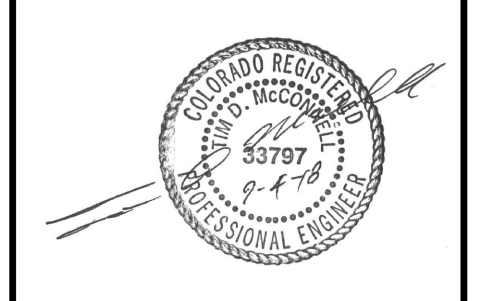
DREXEL, BARRELL & CO.
 Engineers • Surveyors
 3 SOUTH 7TH STREET
 COLORADO SPGS, COLORADO 80905
 CONTACT: TIM D. McCONNELL, P.E.
 (719)260-0887
 BOULDER • COLORADO SPRINGS

CLIENT:
HUMMEL INVESTMENTS, LLC
 8117 PRESTON ROAD, SUITE 120
 DALLAS, TEXAS 75225
 (214) 416-9820

OVERLOT GRADING, POND SR4 & UTILITY
 CONSTRUCTION DRAWINGS FOR
FALCON MARKETPLACE
 FALCON, COLORADO

ISSUE	DATE
1ST SUBMITTAL	6-20-17
RESUBMITTAL	9-6-18

DESIGNED BY: SBN
 DRAWN BY: SBN
 CHECKED BY: TDM
 FILE NAME:



PREPARED UNDER MY DIRECT SUPERVISION FOR AND ON BEHALF OF DREXEL, BARRELL & CO.

DRAWING SCALE:
 HORIZONTAL: 1"=60'
 VERTICAL: N/A

UTILITY SERVICE PLAN

PROJECT NO. 20988-00CSCV
 DRAWING NO.

C8.9

SHEET: 24 OF 27

