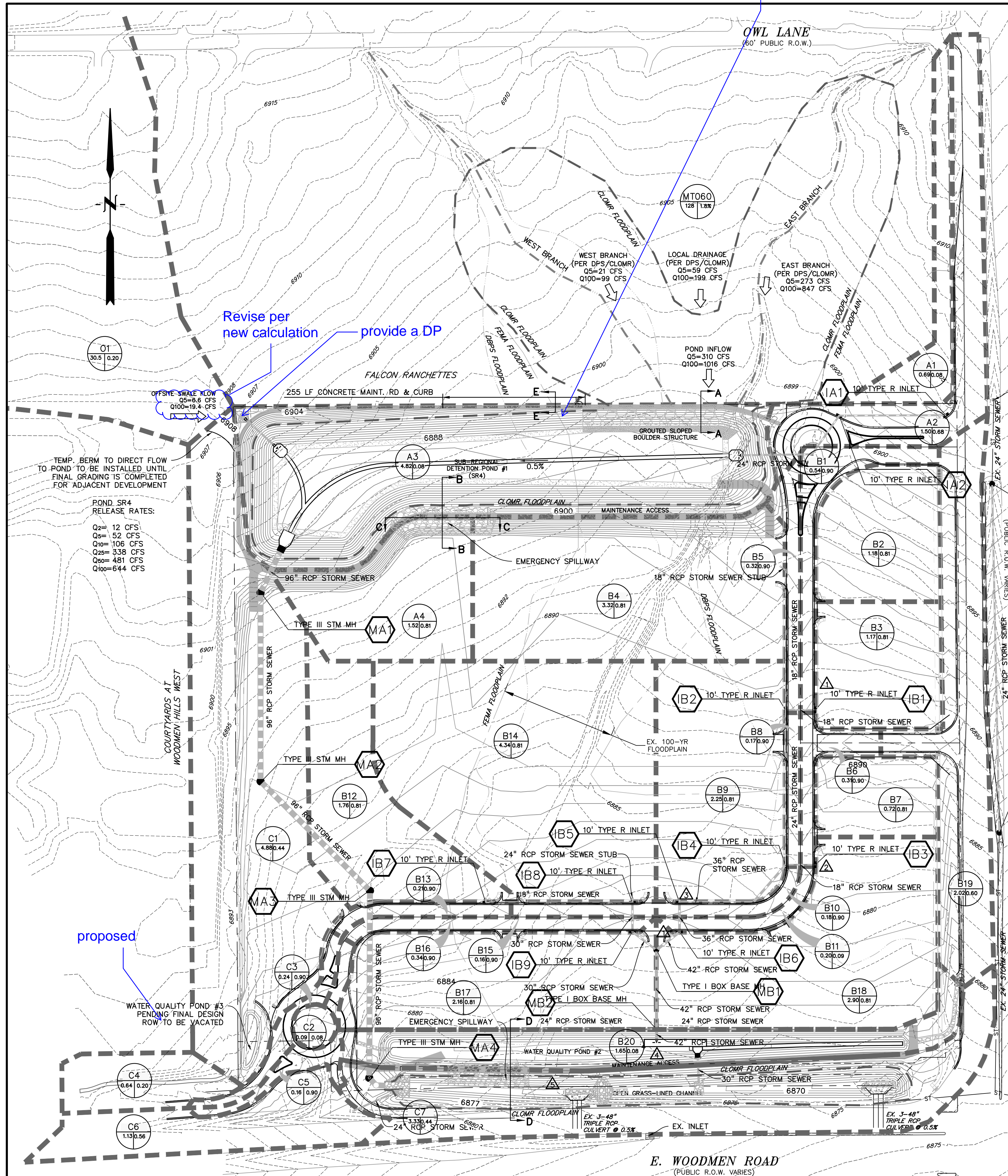
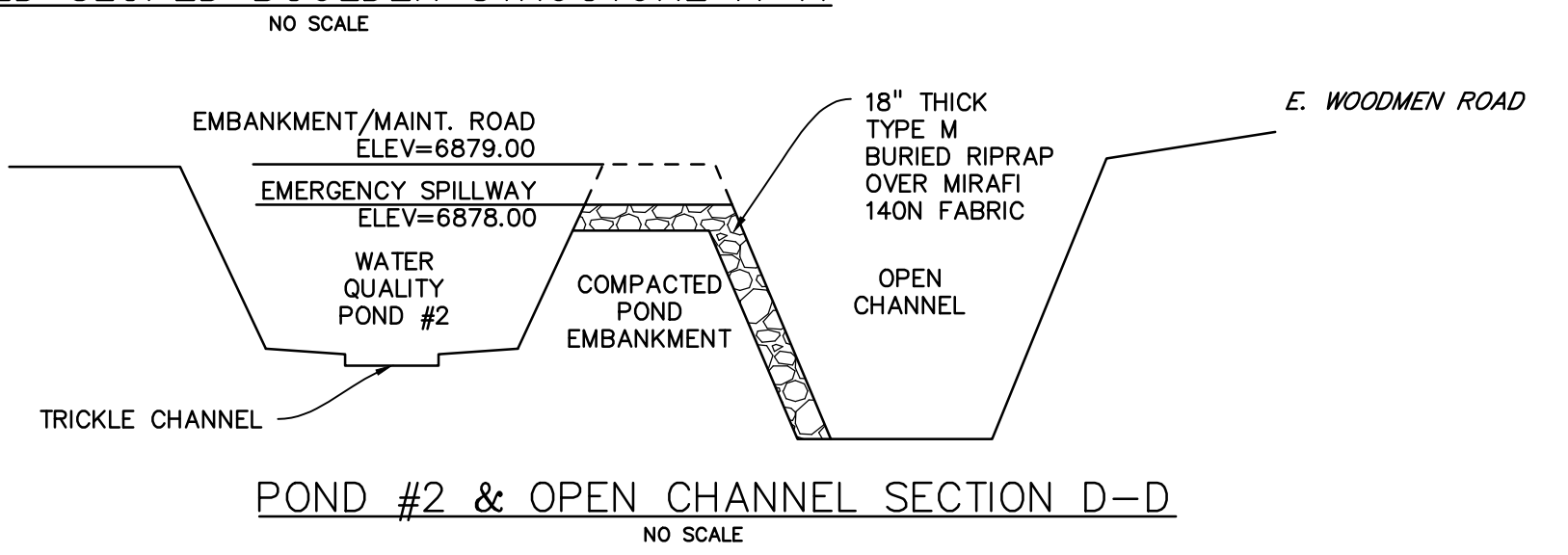
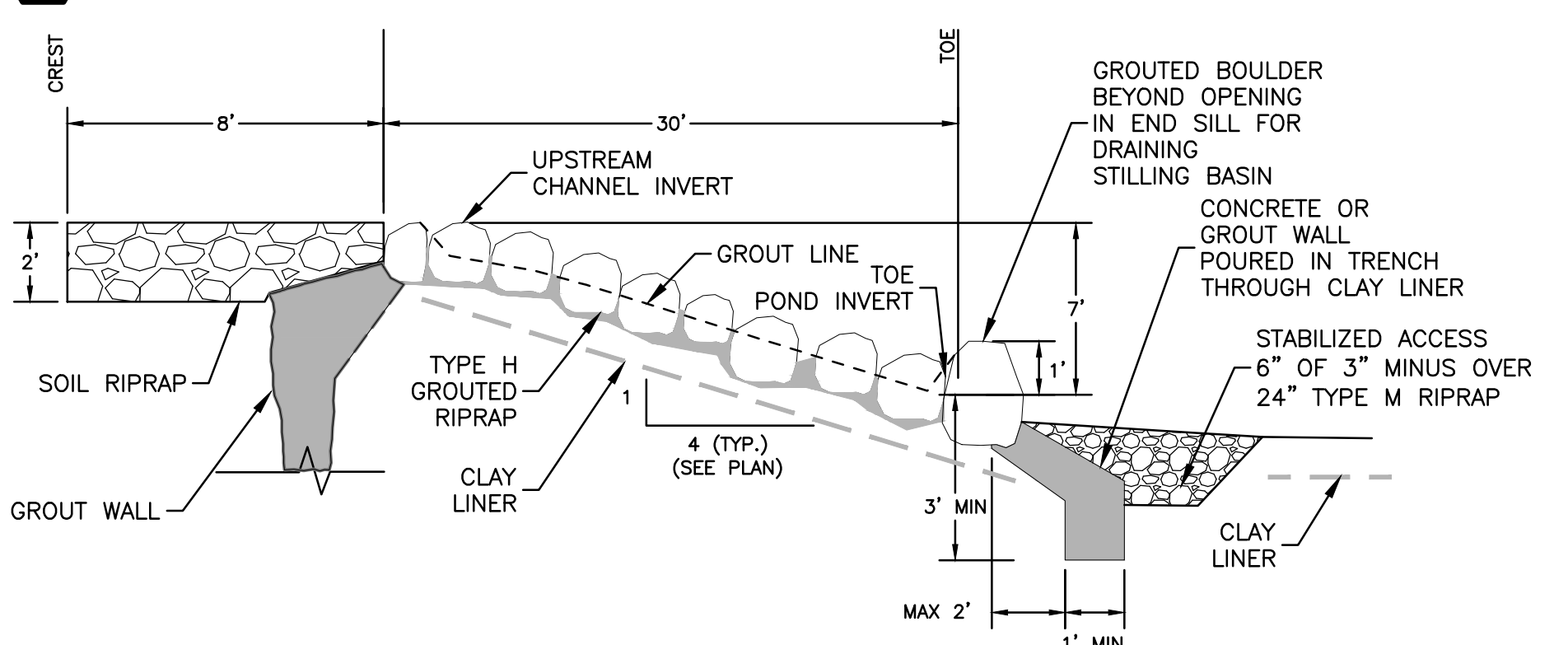
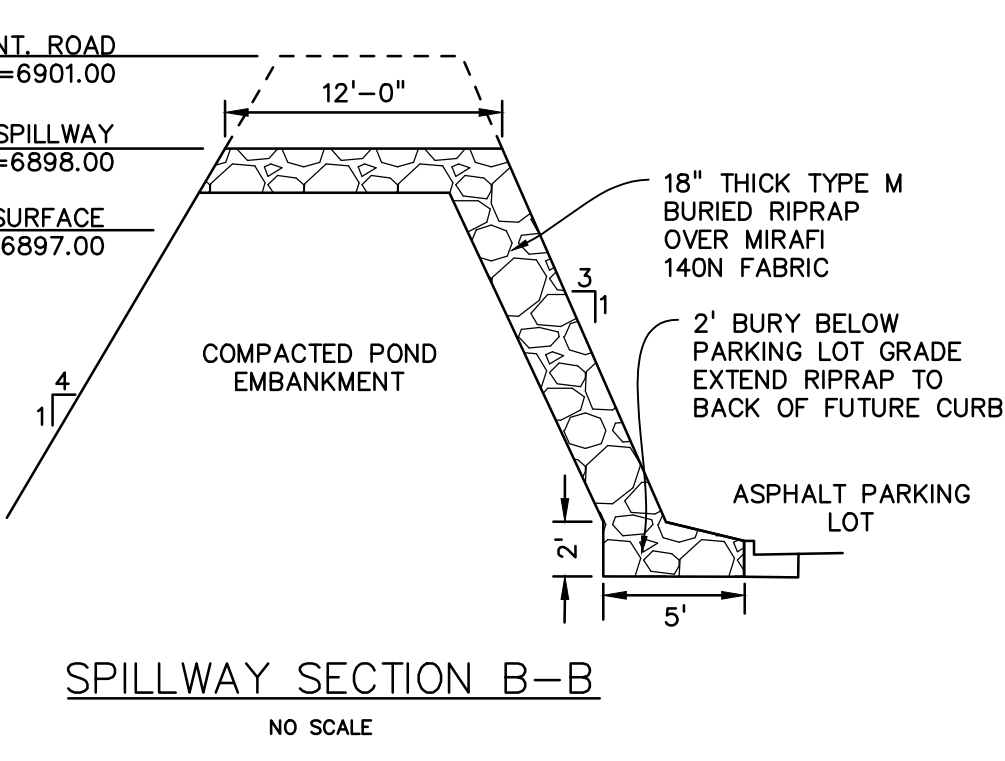
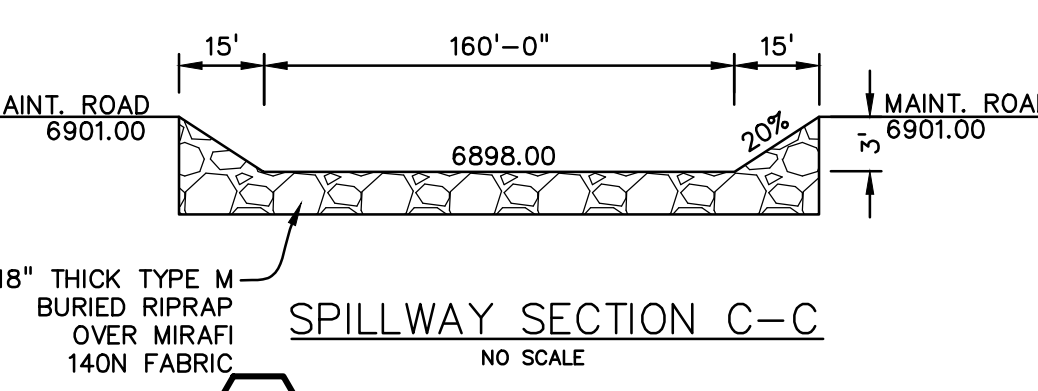
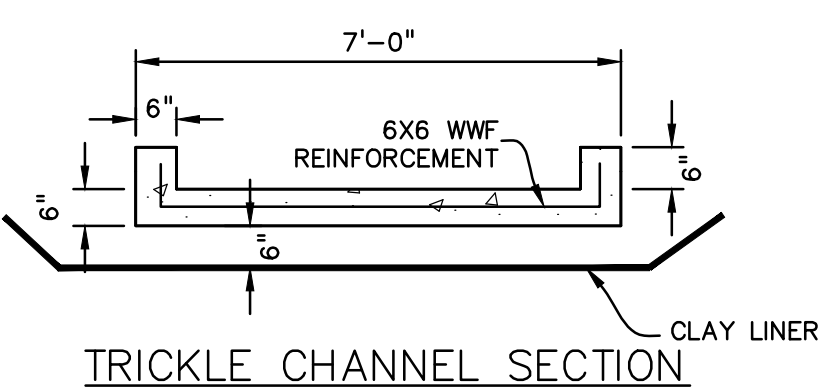
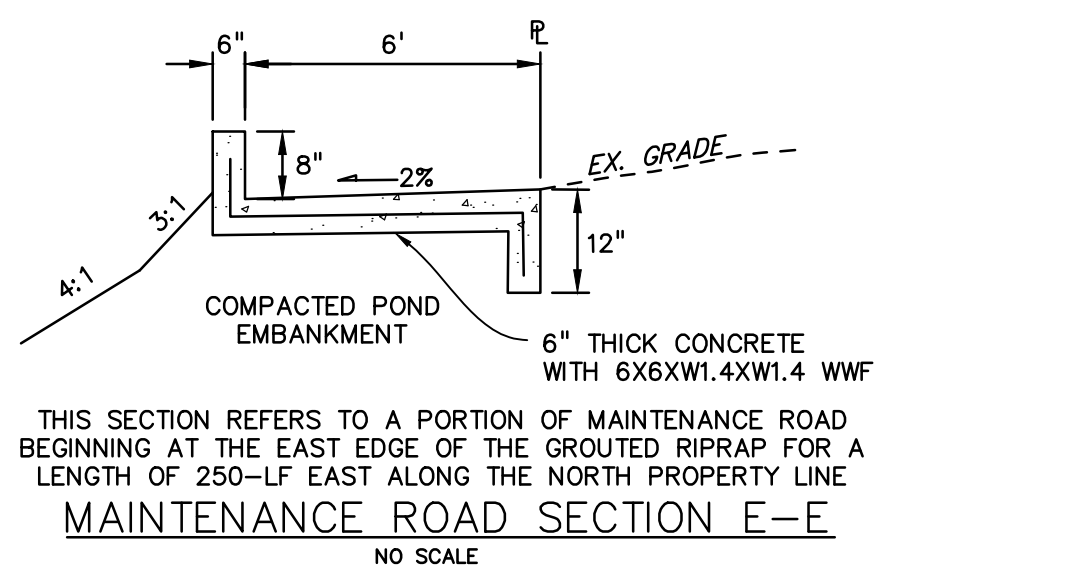
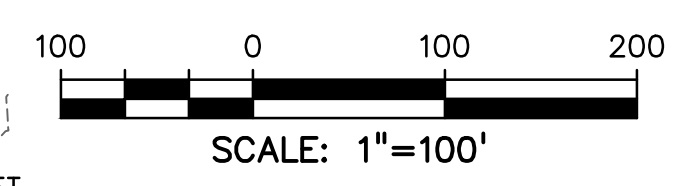
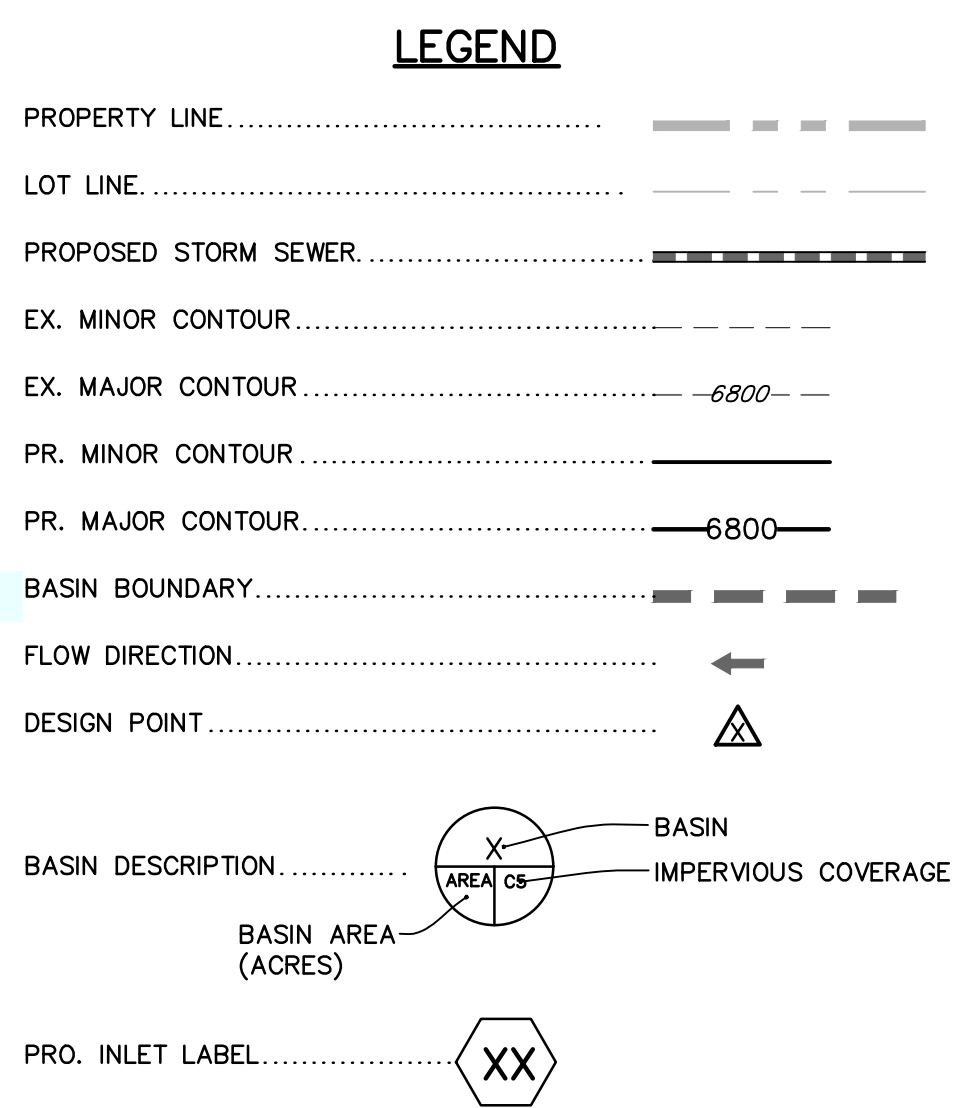


If depth of flow is higher than curb, additional protection is required.



### RUNOFF SUMMARY

BASIN	Area (Ac.)	Q <sub>2</sub> (CFS)	Q <sub>100</sub> (CFS)
A1	0.69	0.2	1.4
A2	1.50	5.2	10.2
A3	4.82	1.2	8.8
A4	1.52	5.6	10.2
B1	0.54	2.4	4.3
B2	1.18	4.9	8.9
B3	1.17	4.3	7.9
B4	3.32	9.6	17.6
B5	0.32	1.5	2.6
B6	0.31	1.4	2.5
B7	0.72	3.0	5.4
B8	0.17	0.8	1.4
B9	2.25	8.8	16.1
B10	0.18	0.8	1.5
B11	0.20	0.9	1.6
B12	1.76	6.1	11.2
B13	0.21	1.0	1.7
B14	4.34	16.2	29.6
B15	0.16	0.7	1.3
B16	0.34	1.5	2.6
B17	2.16	8.9	16.2
B18	2.90	11.3	20.7
B19	2.02	5.4	11.1
B20	1.65	0.4	3.3
C1	4.88	8.2	19.1
C2	0.24	1.1	2.0
C3	0.64	0.5	1.7
C4	0.09	0.0	0.2
C5	0.12	0.5	1.0
C6	0.16	0.7	1.3
C7	1.13	2.9	6.1
C8	3.33	5.0	11.8
O1	32.5	10.3	30.2
DP	Area (Ac.)	Q <sub>2</sub> (CFS)	Q <sub>100</sub> (CFS)
DP1	2.89	10.9	19.8
DP2	1.03	4.4	8.0
DP3	2.43	9.6	16.1
DP4	25.90	66.3	124.3
DP5	45.02	-	754.0
DP-O1	32.5	10.3	30.2



PREPARED BY:  
  
**DREXEL, BARRELL & CO.**  
 Engineers-Surveyors  
 3 SOUTH 7TH STREET  
 COLORADO SPGS, COLORADO 80905  
 CONTACT: TIM D. MCCONNELL, P.E.  
 (719)260-0887  
 BOULDER • COLORADO SPRINGS

CLIENT:  
**HUMMEL INVESTMENTS, LLC**  
 8117 PRESTON ROAD, SUITE 120  
 DALLAS, TEXAS 75225  
 (214) 416-9820

PRELIMINARY PLAN FOR  
**FALCON MARKETPLACE**  
 FALCON, COLORADO

ISSUE	DATE
INITIAL ISSUE	1-17-17
REVISION	9-27-18

DESIGNED BY: TDM  
 DRAWN BY: KGV  
 CHECKED BY: TDM  
 FILE NAME:

PREPARED UNDER MY DIRECT SUPERVISION FOR AND ON BEHALF OF DREXEL, BARRELL & CO.  
 DRAWING SCALE:  
 HORIZONTAL: 1"=100'  
 VERTICAL: N/A

**PROPOSED DRAINAGE CONDITIONS**  
 PROJECT NO. 20988-00CSCV  
 DRAWING NO.

**D-1**  
 SHEET: 1 OF 1