

STAMP

PROJECT NAME

4190 HANCOCK EXPRESSWAY
 Colorado Springs, CO

PLAN TITLE
FINAL LANDSCAPE PLAN

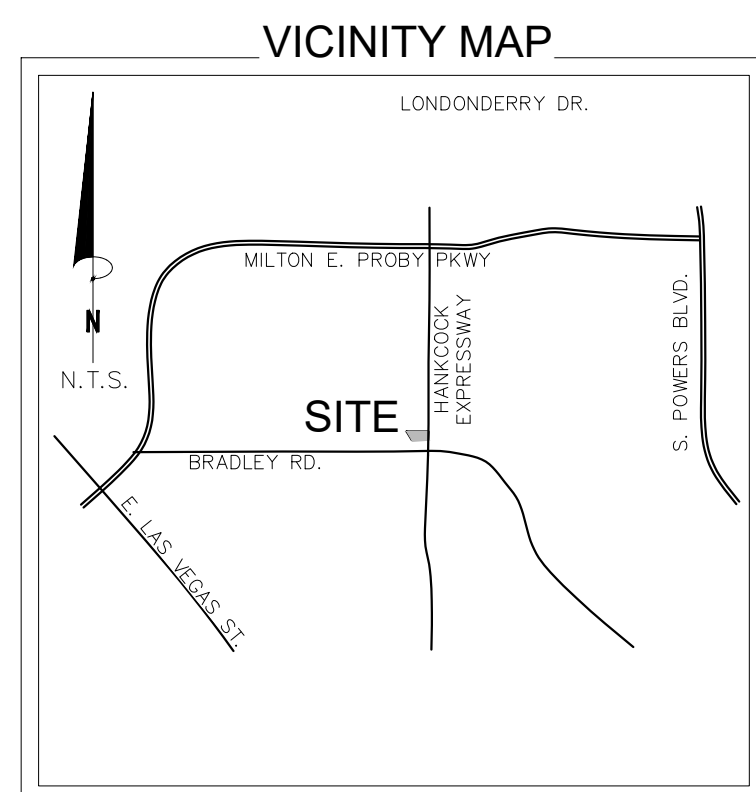
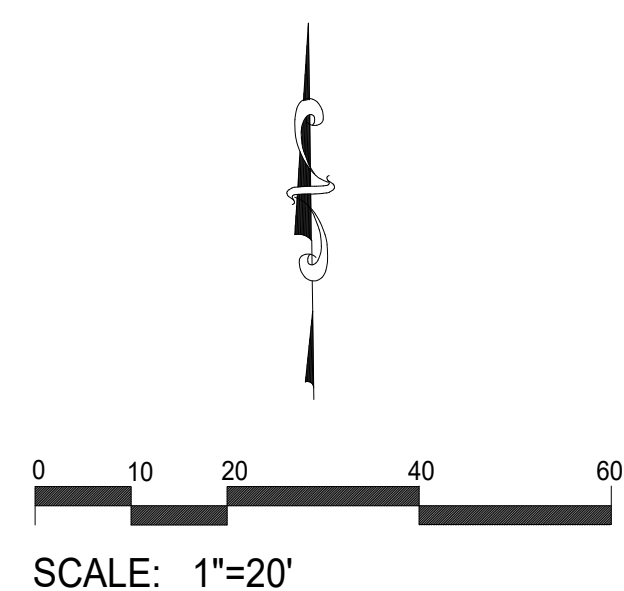
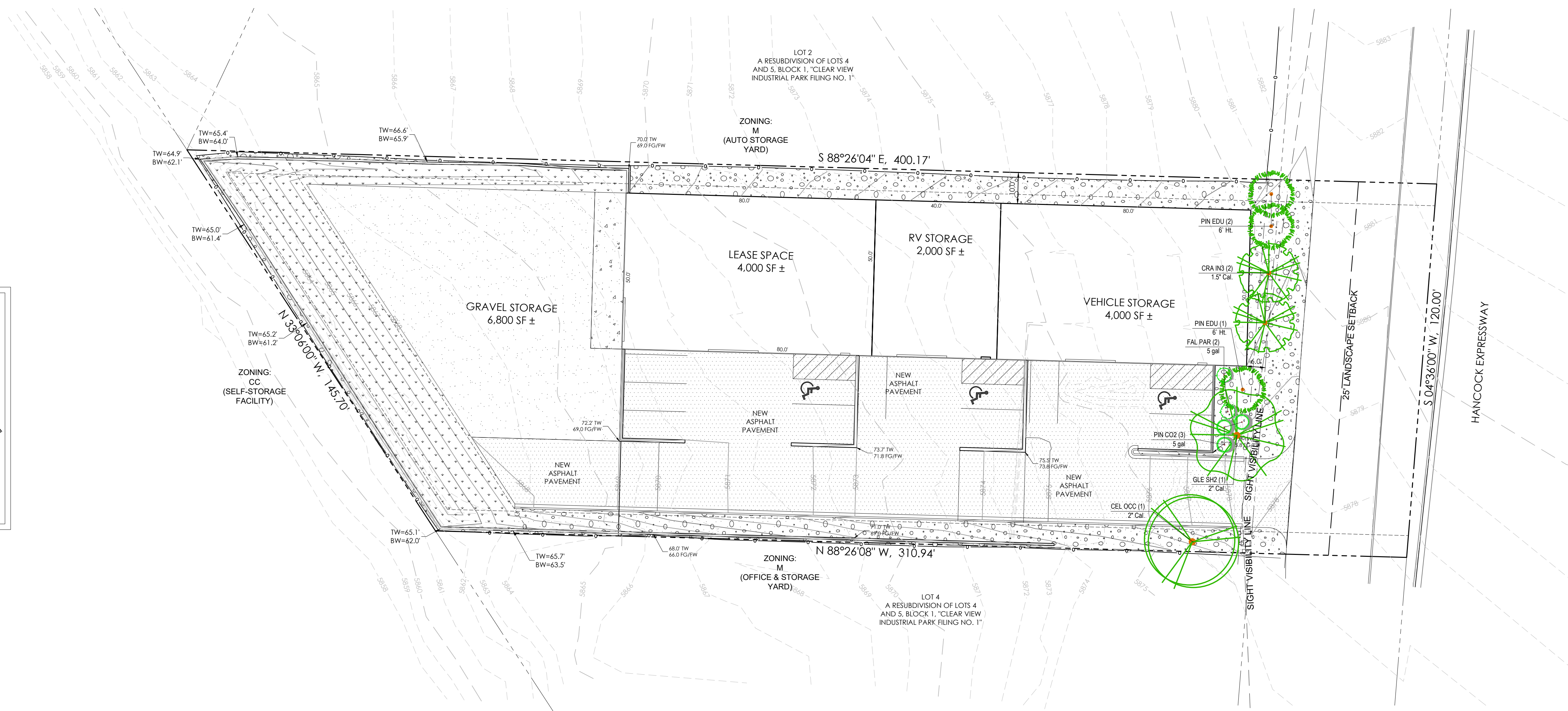
PLAN DATE
 September 13, 2023

REVISIONS

SHEET NO.

L1

Title:
 Alternative Landscape Plan



Please depict:
 -sight distance triangles if applicable for traffic

PLANT SCHEDULE

TREES	CODE	QTY	BOTANICAL NAME	COMMON NAME	SIZE	NOTES
	CEL OCC	1	Celtis occidentalis	Common Hackberry	2" Cal.	B & B
	CRA IN3	2	Crataegus crus-galli inermis	Thornless Cockspur Hawthorn	1.5" Cal.	B & B
	GLE SH2	1	Gleditsia triacanthos inermis 'Shademaster' TM	Shademaster Locust	2" Cal.	B & B
	PIN EDU	3	Pinus cembroides edulis	Pinyon Pine	6' Ht.	B & B
SHRUBS	CODE	QTY	BOTANICAL NAME	COMMON NAME	SIZE	NOTES
	FAL PAR	2	Fallugia paradoxa	Apache Plume	5 gal	
	PIN CO2	3	Pinus mugo 'Compacta'	Dwarf Mugo Pine	5 gal	

LANDSCAPE MATERIALS LEGEND

SYMBOL	DESCRIPTION	QTY
	1.5" DIAMETER 'ROYAL GRANITE' CRUSHED ROCK, 3" DEPTH OVER LANDSCAPE FABRIC	5,837 sf
	NON-IRRIGATED NATIVE GRASS WITH EROSION CONTROL BLANKET	4,077 sf

SITE CATEGORY CALCULATIONS

Landscape Setbacks

Street Name or Boundary	Street Classification	Width (in Ft.) Req./Prov.	Linear Footage	Tree/Feet Required	No. of Trees Req./Prov.	Setback Plant Abbr. Denoted on Plan (HE)
Hancock Expressway	Major Arterial	25' / 25'	120'	1 / 20'	6 / 6	(HE)

Parking

No. of Vehicles Spaces Provided	Shade Trees Required/Provided	Abbr. on Plan (MV)	Vehicle Lot Frontages	Length of Frontage (excluding driveways)	2/3 Length of Frontage (ft.)
11	1 / 1	(MV)	Hancock Expressway	28'	19'

Min. 3" Screening Plants Req. / Prov.	Evergreen Plants Req. (50%) / Prov.	Length of Screening Wall or Berm Provided	Vehicle Lot Plant Abbr. on Plan (HS)	Percent Ground Plane Veg. Req. / Prov.
5 / 5	3 / 3	-	(HS)	75% / 75%

Internal Landscaping

Net Site Area (SF) (less public ROW)	Percent Minimum Internal Area (%)	Internal Area (SF) Required / Provided	Internal Trees (1/500 SF) Required / Provided
42,607 s.f.	5%	2,130 s.f. / 3,672 s.f.	4 / 0 *

Shrub Substitutes Required / Provided	Internal Plant Abbr. Denoted on Plan (IN)
0 / 0	(IN)

Landscape Buffer & Screens

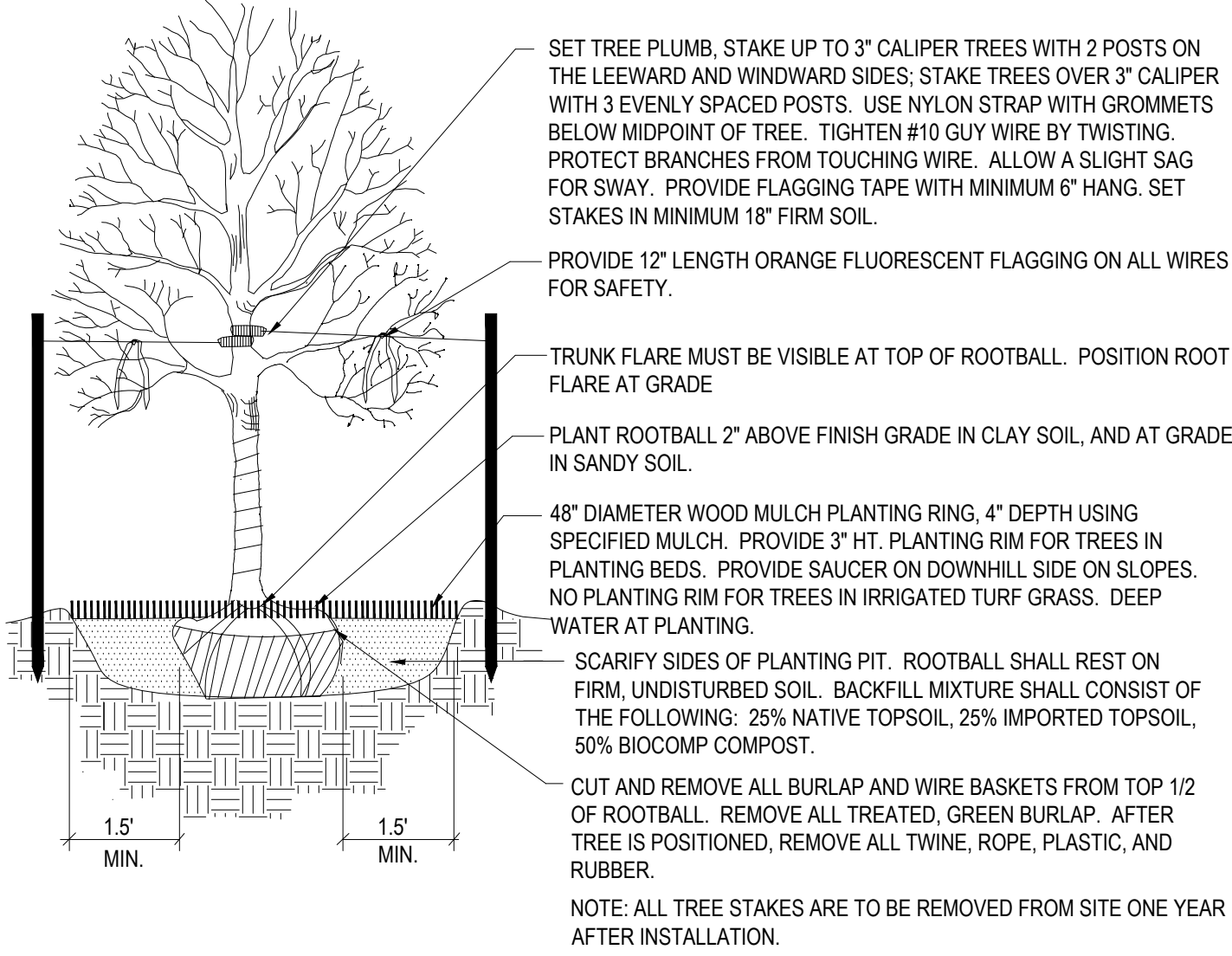
Street Name or Property Line	Width (in Ft.) Req. / Prov.	Linear Footage	Buffer Trees (1/25') Required / Provided	Evergreen Trees Req. (1/3) / Provided
None	- / -	-	- / -	- / -

Length of 6 Ft. Opaque Structure Req. / Prov.	Buffer Tree Abbr. Denoted on Plan	Percent Ground Plane Veg. Req. / Prov.
- / -	-	- / -

* ALTERNATIVE LANDSCAPE PLAN REQUEST-
 Because of the industrial zoning and use of this site, the owner requests a waiver of the internal tree landscape requirement. All other landscape requirements are being met. The most visible portion of the site (the street frontage) is landscaped with trees and shrubs.

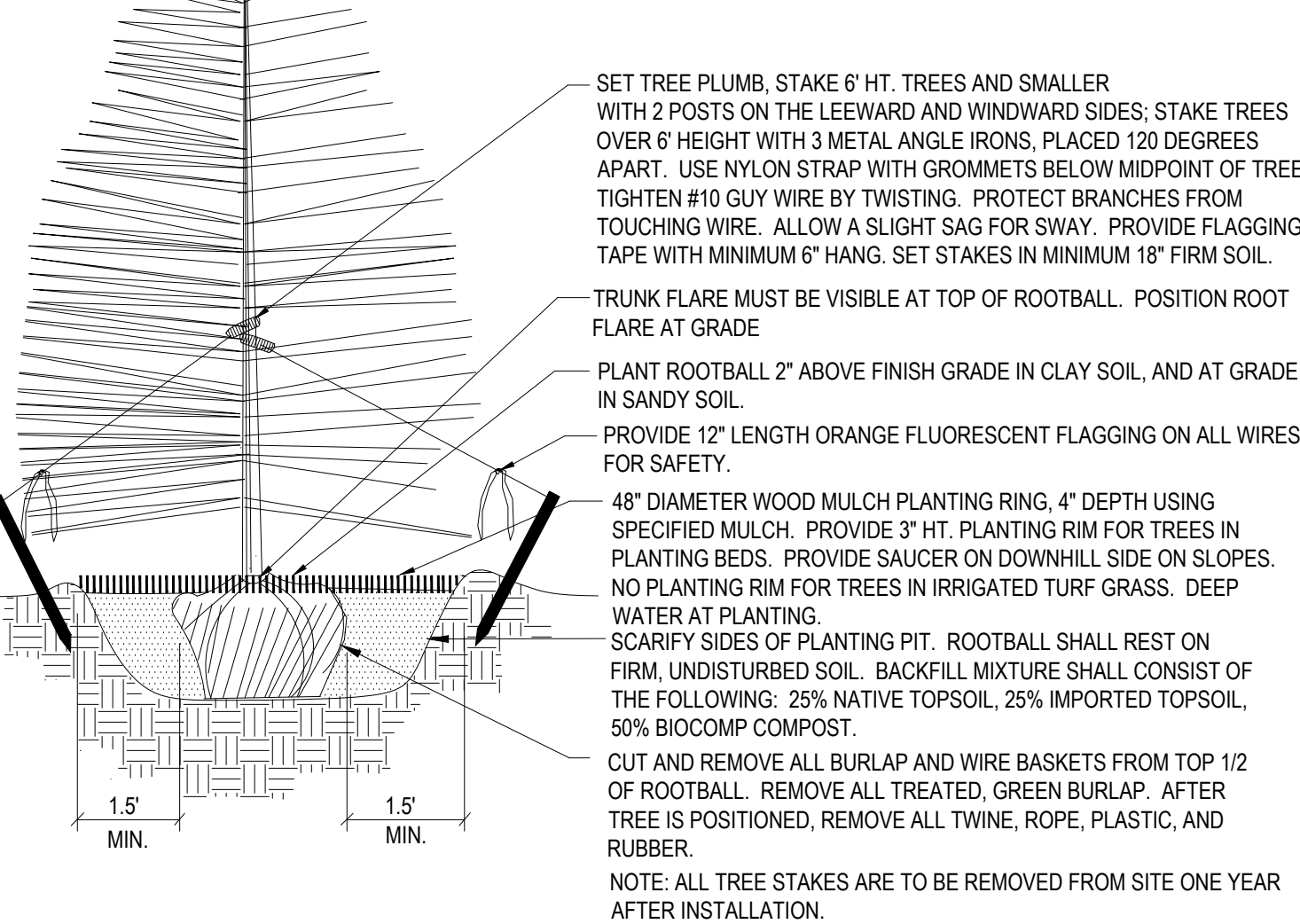
PLANTING DETAILS

- NOTES:
- DO NOT REMOVE OR CUT LEADER.
 - PRUNE ONLY DEAD OR BROKEN BRANCHES AND WEAK OR NARROW CROTCHES.
 - DO NOT REMOVE LOWER LIMBS AND SPROUTS FOR AT LEAST TWO GROWING SEASONS.
 - KEEP PLANTS MOIST AND SHADED UNTIL PLANTED.
 - DO NOT FERTILIZE FOR AT LEAST ONE GROWING SEASON.
 - WRAP TRUNK ON EXPOSED SITES OR SPECIES WITH THIN BARK. USE ELECTRICAL TAPE NOT TWINE. WRAP OCTOBER 15 AND REMOVE BY MARCH 31.

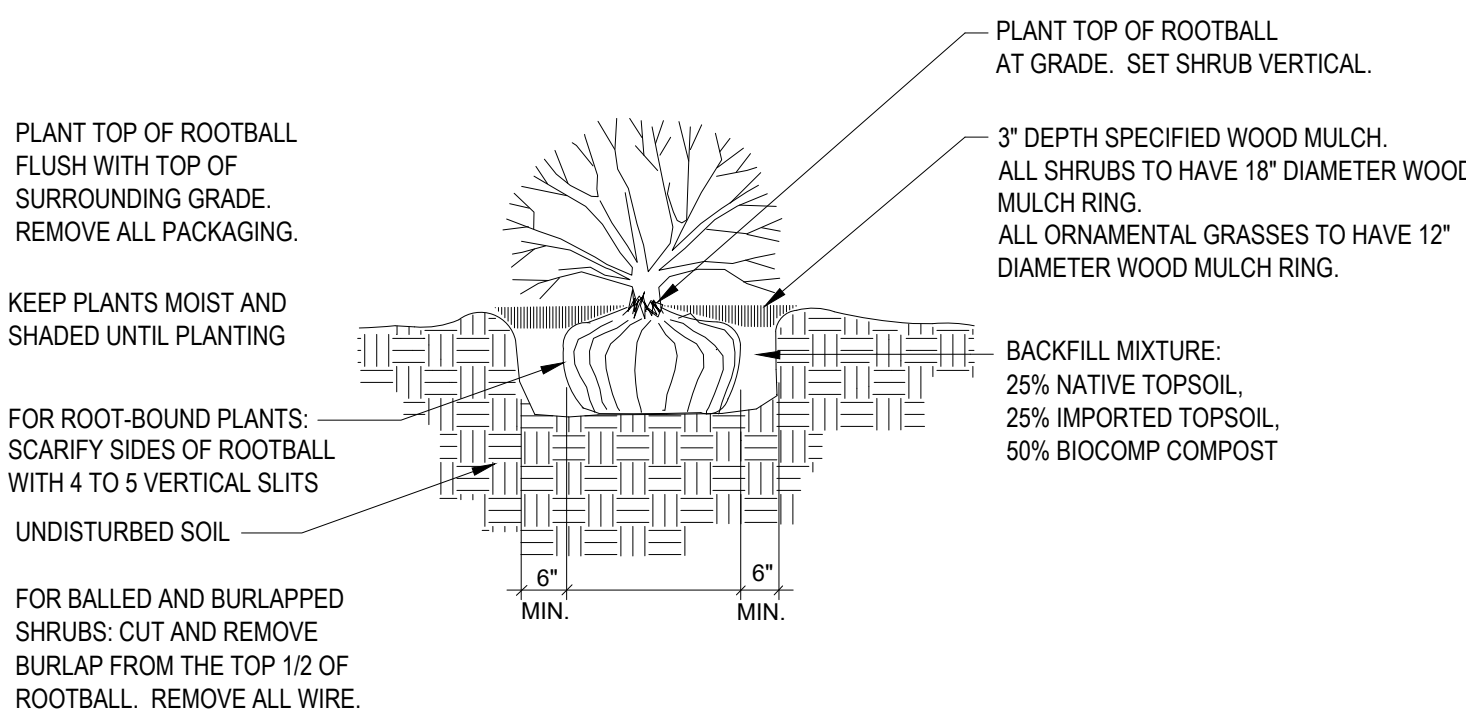


1 Deciduous Tree Planting Detail
NOT TO SCALE

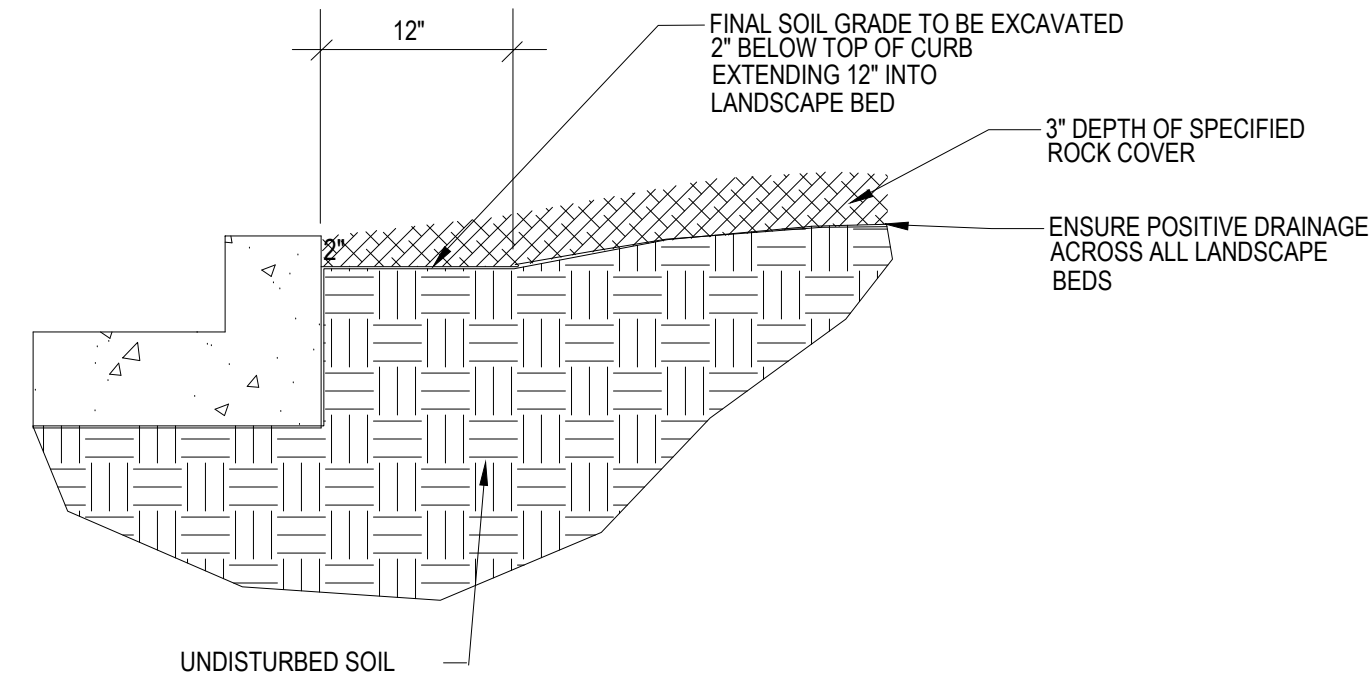
- NOTES:
- DO NOT REMOVE OR CUT LEADER.
 - PRUNE ONLY DEAD OR BROKEN BRANCHES AND WEAK OR NARROW CROTCHES.
 - REMOVE ANY DOUBLE LEADER, UNLESS OTHERWISE DIRECTED BY OWNERS REPRESENTATIVE.
 - KEEP PLANTS MOIST AND SHADED UNTIL PLANTED.
 - AVOID FALL PLANTING IF POSSIBLE



2 Coniferous Tree Planting Detail
NOT TO SCALE



3 Shrub Planting Detail
SCALE: NOT TO SCALE



4 Rock Cover / Mulch Bed Excavation
SCALE: NOT TO SCALE

GENERAL NOTES

- ALL REFERENCES TO 'CONTRACTOR' REFER TO LANDSCAPE CONTRACTOR, UNLESS OTHERWISE NOTED.
- CONTRACTOR IS RESPONSIBLE FOR GETTING ALL UTILITY LOCATES PRIOR TO STARTING ANY WORK ON SITE AND ALSO HAVING UTILITIES RELOCATED AS NECESSARY FOR THE DURATION OF CONSTRUCTION.
- CONTRACTOR IS RESPONSIBLE FOR INSTALLING ALL LANDSCAPE SHOWN ON THIS PLAN. ANY DEFICIENCIES OR DEVIATIONS FROM THIS PLAN ARE TO BE APPROVED BY OWNER'S REPRESENTATIVE OR LANDSCAPE ARCHITECT. ANY CHANGES FROM THE APPROVED PLANS SHALL REQUIRE APPROVAL FROM THE EL PASO COUNTY PLANNING DEPARTMENT AND MAY DELAY COMPLETION OF PROJECT.
- CONTRACTOR IS RESPONSIBLE FOR VERIFYING QUANTITIES OF MATERIALS NEEDED TO COMPLETE THIS PLAN IN THE FIELD. NOTIFY OWNER'S REPRESENTATIVE OF DISCREPANCIES BETWEEN THE DRAWINGS AND CONDITIONS IN THE FIELD. SUBSTITUTIONS OF LANDSCAPE MATERIALS ARE NOT ALLOWED WITHOUT APPROVAL FROM LANDSCAPE ARCHITECT GIVEN PRIOR TO INSTALLATION. NOTIFY LANDSCAPE ARCHITECT PRIOR TO CONSTRUCTION IF LANDSCAPE MATERIAL LOCATIONS NEED TO BE ALTERED DUE TO ON-SITE CONDITIONS.
- CONTRACTOR IS TO PROVIDE A ONE YEAR WARRANTY ON ALL PLANT MATERIALS, IRRIGATION COMPONENTS, NATIVE GRASS, AND WORKMANSHIP. CONTRACTOR IS TO PROVIDE OWNER WITH WARRANTY CONDITIONS AND COMMENCE WARRANTY PERIOD UPON FINAL ACCEPTANCE OF LANDSCAPE INSTALLATION.
- THE OWNER OF THIS PROPERTY AND ANY FUTURE OWNERS SHALL BE RESPONSIBLE FOR THE PROPER LANDSCAPE AND IRRIGATION MAINTENANCE OF THIS SITE. MAINTENANCE OF THIS SITE INCLUDES, BUT IS NOT LIMITED TO, IRRIGATION INSPECTIONS AND ADJUSTMENTS, IRRIGATION SYSTEM SHUT DOWN AND START UP, IRRIGATION LEAK REPAIR, LANDSCAPE WEEDING, MOWING, SEEDING, FERTILIZATION, PRUNING, AND PLANT MATERIAL REPLACEMENT.

PROJECT NOTES

- FINE GRADING TO BE PERFORMED BY LANDSCAPE CONTRACTOR TO REFLECT FINISHED GRADES SHOWN ON THE PROJECT GRADING PLANS. ALL FINISHED GRADES ARE TO HAVE A MINIMUM 2% SLOPE. CONTRACTOR IS TO REPORT POOR DRAINAGE CONDITIONS OR ANY GRADES IN LANDSCAPE AREAS LESS THAN 2% TO GENERAL CONTRACTOR AND LANDSCAPE ARCHITECT PRIOR TO LANDSCAPE CONSTRUCTION WORK.
- CONTRACTOR IS TO PROVIDE FINAL GRADES ADJACENT TO HARDSCAPE SURFACES AT THE FOLLOWING SPECIFICATIONS:
2' BELOW TOP OF CONCRETE OR ASPHALT FOR ALL ROCK COVER BEDS.
1' BELOW TOP OF CONCRETE OR ASPHALT FOR NATIVE SEED AREAS.
CONTRACTOR IS TO COORDINATE THESE GRADING SPECIFICATIONS WITH GENERAL CONTRACTOR AND/OR WHOEVER IS PROVIDING ROUGH GRADING. FINAL GRADES IN ALL LANDSCAPE AREAS ARE TO BE ESTABLISHED USING ON-SITE STOCKPILED TOPSOIL.
- ALL DISTURBED NATIVE GRASS AREAS ARE TO BE SEEDED WITH SPECIFIED SEED MIX BY HYDRO-MULCHING OR DRILL SEEDING (WHERE ACCESSIBLE) AT SEEDING RATE SHOWN IN TABLE. EROSION CONTROL BLANKET TO BE INSTALLED OVER ALL NATIVE SEED AREAS. REFER TO NATIVE SEED ESTABLISHMENT SPECIFICATION AND SEED MIX TABLE FOR MORE DETAILED INSTRUCTIONS.
- ROCK COVER AREAS INSIDE PROPERTY BOUNDARIES TO CONSIST OF 1.5" DIAMETER 'ROYAL GRANITE' CRUSHED GRANITE (C&C SAND), SPREAD 3" DEPTH OVER LANDSCAPE FABRIC. LANDSCAPE FABRIC TO CONSIST OF A WOVEN FIBER FABRIC (MIRAFI OR EQUAL). FABRIC TO OVERLAP 6" MINIMUM AT ALL SEAMS. 6" STEEL ANCHOR PINS TO BE INSTALLED 8' O.C. MAX.
- 'CASCADE CEDAR' (C&C SAND) WOOD MULCH IS TO BE PROVIDED AROUND THE BASE OF ALL PLANTINGS, 3" DEPTH (NO FABRIC BENEATH). REFER TO PLANTING DETAILS.

SOIL PREPARATION NOTES

- NATIVE GRASS AREAS:** ALL DISTURBED NATIVE GRASS AREAS TO RECEIVE 2 CU. YDS. PER 1,000 SQ. FT. OF 'BIOCOMP' SOIL AMENDMENTS (C&C SAND) INCORPORATED INTO EXISTING SOIL AND ROTO-TILLED TO A 6" DEPTH.
- PROPOSED TREES AND SHRUBS:** ALL PROPOSED TREES ARE TO BE BACKFILLED WITH A MIXTURE OF 'BIOCOMP' SOIL AMENDMENT AND IMPORTED GRADE A TOPSOIL (C&C SAND). REFER TO PLANTING DETAIL.

IRRIGATION NOTES

- ALL PROPOSED PLANT MATERIALS ARE TO BE WATERED BY A PROPOSED PERMANENT AUTOMATIC DRIP IRRIGATION SYSTEM. ALL SHRUBS TO HAVE (2) 1 GPH EMITTERS PLACED AT EDGE OF ROOTBALL ON OPPOSITE SIDES. ALL TREES TO HAVE (4) 1 GPH EMITTERS PLACED 90 DEGREES APART AROUND EDGE OF ROOTBALL.
- ALL SEEDED NATIVE GRASS AREAS TO BE ESTABLISHED BY A TEMPORARY SPRAY IRRIGATION ZONES CONNECTED TO THE AUTOMATIC IRRIGATION SYSTEM OR WITH PORTABLE SPRINKLER HEADS AND HOSES CONNECTED TO IRRIGATION SYSTEM QUICK COUPLERS AND/OR BUILDING HOSE BIB(S).

GRADING / DRAINAGE NOTES

- LANDSCAPE CONTRACTOR IS TO VERIFY THAT ALL FINISHED GRADES COMPLY WITH GRADING PLAN PREPARED BY CIVIL ENGINEER. VERIFY THAT ALL SLOPES DRAIN AWAY FROM BUILDING(S) AND THAT DRAINAGE SWALES ARE CORRECTLY LOCATED AND CARRY WATER AS INTENDED. NOTIFY GENERAL CONTRACTOR PRIOR TO CONSTRUCTION IF STANDING WATER IS PRESENT (OTHER THAN DETENTION FACILITIES) OR IF SLOPES ARE NOT GRADED AS PER APPROVED GRADING PLAN.
- LANDSCAPE CONTRACTOR IS TO LOCATE ALL DOWNSPOUTS AND DOWNSPOUT EXTENSIONS AND VERIFY THAT NO OBSTRUCTIONS ARE IMPEDING THE FLOW OF WATER AWAY FROM THE BUILDING.
- LANDSCAPE CONTRACTOR IS TO PROVIDE TEMPORARY EROSION MITIGATION MEASURES FOR THE DURATION OF LANDSCAPE CONSTRUCTION. THIS INCLUDES PLACEMENT OF WATTLES AND/OR EROSION BLANKET WHEREVER DRAINAGE ERODES BARE SOIL AND RUNOFF CAN POTENTIALLY DAMAGE NEIGHBORING PROPERTIES OR SEDIMENT COULD POTENTIALLY FLOW OUTSIDE OF PROPERTY LINES.

EL PASO COUNTY ALL-PURPOSE MIX FOR UPLAND, TRANSITION AND PERMANENT CONTROL MEASURE AREAS

COMMON NAME	SCIENTIFIC NAME	GROWTH SEASON / FORM	% OF MIX	POUNDS PLS (PURE LIVE SEED)		
				-IRRIGATED BROADCAST -IRRIGATED HYDROSEED	-NON-IRRIGATED BROADCAST -NON-IRRIGATED HYDROSEED -IRRIGATED DRILLED	-NON-IRRIGATED DRILLED
				80 SEEDS/SQ. FT.	40 SEEDS/SQ. FT.	20 SEEDS/SQ. FT.
BIG BLUESTEM	<i>Buchloe dactyloides</i>	WARM, SOD	20%	4.4	2.2	1.1
BLUE GRAMA	<i>Bouteloua gracilis</i>	WARM, BUNCH	10%	0.5	0.25	0.13
GREEN NEEDLEGRASS	<i>Nassella viridula</i>	COOL, BUNCH	10%	2	1	0.5
WESTERN WHEATGRASS	<i>Pascopyrum smithii</i>	COOL, SOD	20%	6.4	3.2	1.6
SIDE-OATS GRAMA	<i>Bouteloua curtipendula</i>	WARM, BUNCH	10%	2	1	0.5
SWITCHGRASS	<i>Panicum virgatum</i>	WARM, BUNCH/ SOD	10%	0.8	0.4	0.2
PRAIRIE SANDREED	<i>Calamovilfa longifolia</i>	WARM, BUNCH	10%	1.2	0.6	0.3
YELLOW INDIANGRASS	<i>Sorghastrum nutans</i>	WARM, SOD	10%	2	1	0.5
SEED RATE (LBS. PLS / ACRE)				19.3	9.7	4.8

NATIVE SEED ESTABLISHMENT

INITIAL PLANTING
STOCKPILED TOPSOIL SHOULD BE SPREAD EVENLY OVER ALL AREAS TO RECEIVE NATIVE SEED. SEED BED IS TO BE WEED-FREE. SPECIFIED SOIL AMENDMENTS SHOULD BE SPREAD AND INCORPORATED INTO TOP 6" OF SOIL. SEED BED IS TO BE RAKED SMOOTH AND FREE OF DEBRIS LARGER THAN 1" IN DIAMETER. ANY AREAS THAT THE CONTRACTOR BELIEVES TO BE SUSCEPTIBLE TO EROSION ARE TO BE BROUGHT TO THE ATTENTION OF THE OWNER AND/OR GENERAL CONTRACTOR PRIOR TO SEEDING. THE SPECIFIED SEED MIX IS TO BE APPLIED BY HYDRO-MULCH SEEDING AT THE RATE SPECIFIED. SEED IS TO BE APPLIED BETWEEN APRIL 15 AND SEPTEMBER 15. SEED SHALL NOT BE SOWN IF GROUND IS IN A FROZEN STATE. SPECIFIED EROSION CONTROL BLANKET IS TO BE INSTALLED IMMEDIATELY AFTER SEEDING. BLANKET SHALL BE LAID AND SECURED WITH 6" METAL STAPLES AS PER MANUFACTURER'S INSTRUCTIONS. CONTRACTOR IS TO PROVIDE INCIDENTAL WATERING OF ALL SEEDED AREAS THREE TIMES A WEEK DURING GROWING SEASON FOR A MINIMUM OF 8 WEEKS, OR UNTIL ESTABLISHED AND MEETING COVERAGE REQUIREMENTS. MOWING MAY BE NECESSARY DURING THE FIRST GROWING SEASON TO KEEP INVASIVE WEEDS FROM SETTING SEEDS. CONTRACTOR IS RESPONSIBLE FOR KEEPING BROADLEAF WEEDS UNDER CONTROL FOR 12 MONTHS AFTER INITIAL SEEDING AND IS ALSO RESPONSIBLE FOR OVER SEEDING BARE AREAS UNTIL SPECIFIED NATIVE GRASSES COVER ALL AREAS AND AREAS WITHOUT SPECIFIED NATIVE GRASS DO NOT EXCEED 6' X 6'.

OVER SEEDING
SIX WEEKS AFTER THE INITIAL SEEDING DURING THE FIRST GROWING SEASON AND/OR DURING THE SPRING OF THE SECOND GROWING SEASON CONTRACTOR IS TO REPAIR ANY ERODED AREAS AND OVER SEED ALL BARE NATIVE GRASS AREAS. CONTRACTOR IS TO USE SPECIFIED SEED MIX BY BROADCAST AND RAKING INTO TOP 1/4" TO 1/2" OF SOIL. INCIDENTAL WATERING IS TO BE PROVIDED TO ESTABLISH OVER-SEEDED AREAS. BROADLEAF WEEDS ARE TO BE KEPT UNDER CONTROL BY MANUALLY PULLING OR CUTTING WEEDS OR SPRAYING OF BROADLEAF WEED HERBICIDE. HERBICIDE AND APPLICATION SHALL CONFORM TO ALL APPLICABLE LAWS OF THE STATE OF COLORADO AND MANUFACTURERS INSTRUCTIONS.



P.O. Box 354
Palmer Lake, CO 80133
(719) 640-9428
jwlandarch@gmail.com
www.jwlandscapearchitect.com

STAMP

PROJECT NAME

4190 HANCOCK EXPRESSWAY
Colorado Springs, CO

PLAN TITLE

FINAL LANDSCAPE PLAN

PLAN DATE

September 13, 2023

REVISIONS

SHEET NO.

L2