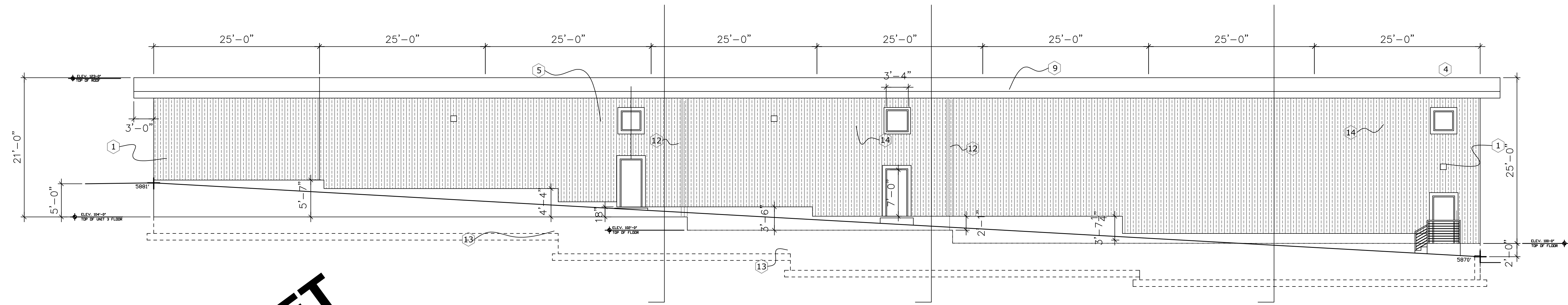


architvity

Ron Conder

r.conder@architvity.com

14405 River Oaks Dr.  
Colorado Springs, CO 80921  
719-661-9250, phone  
719-481-6463, fax

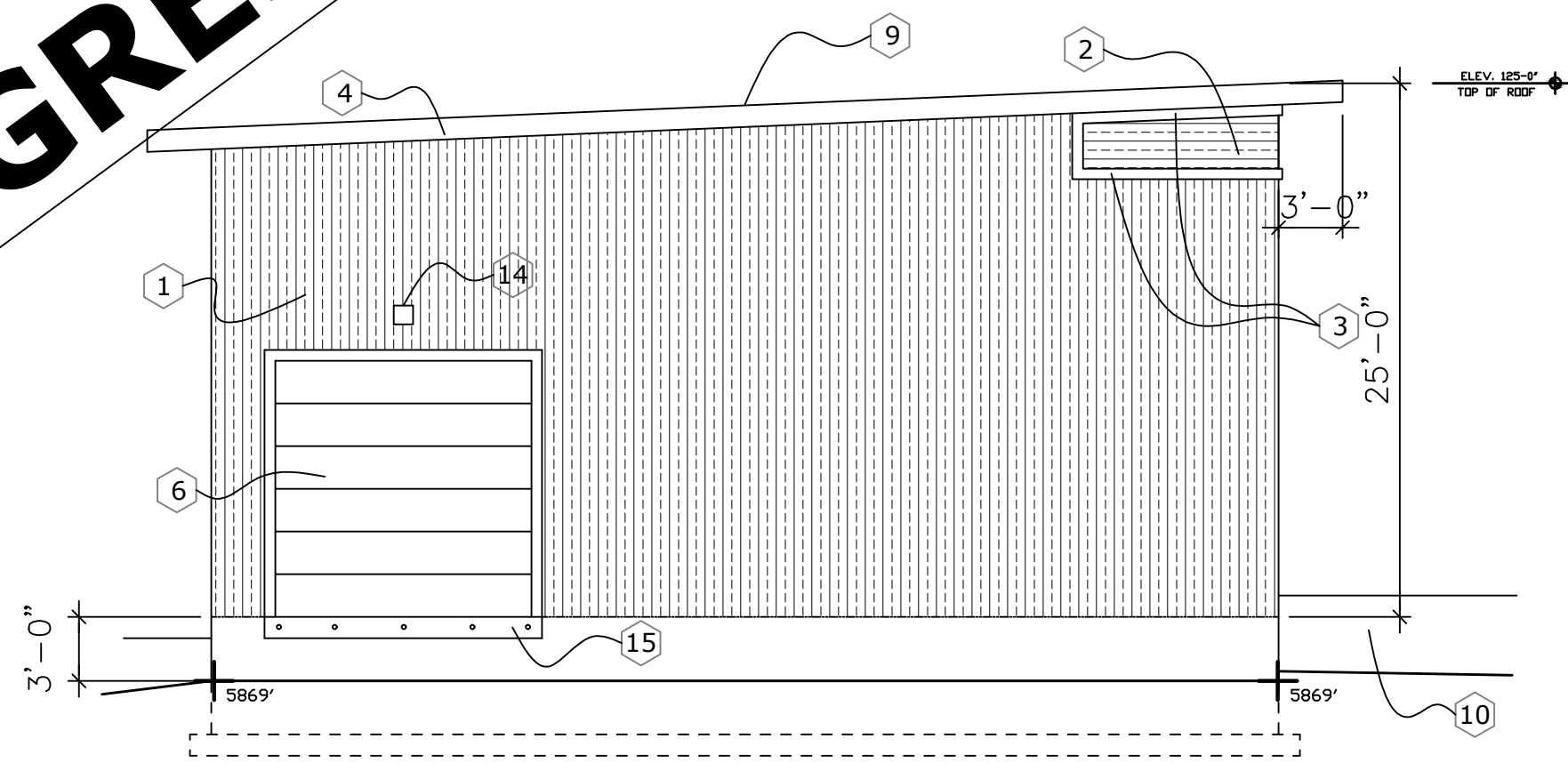


**1 NORTH ELEVATION**  
SCALE: 1/8"=1'-0"

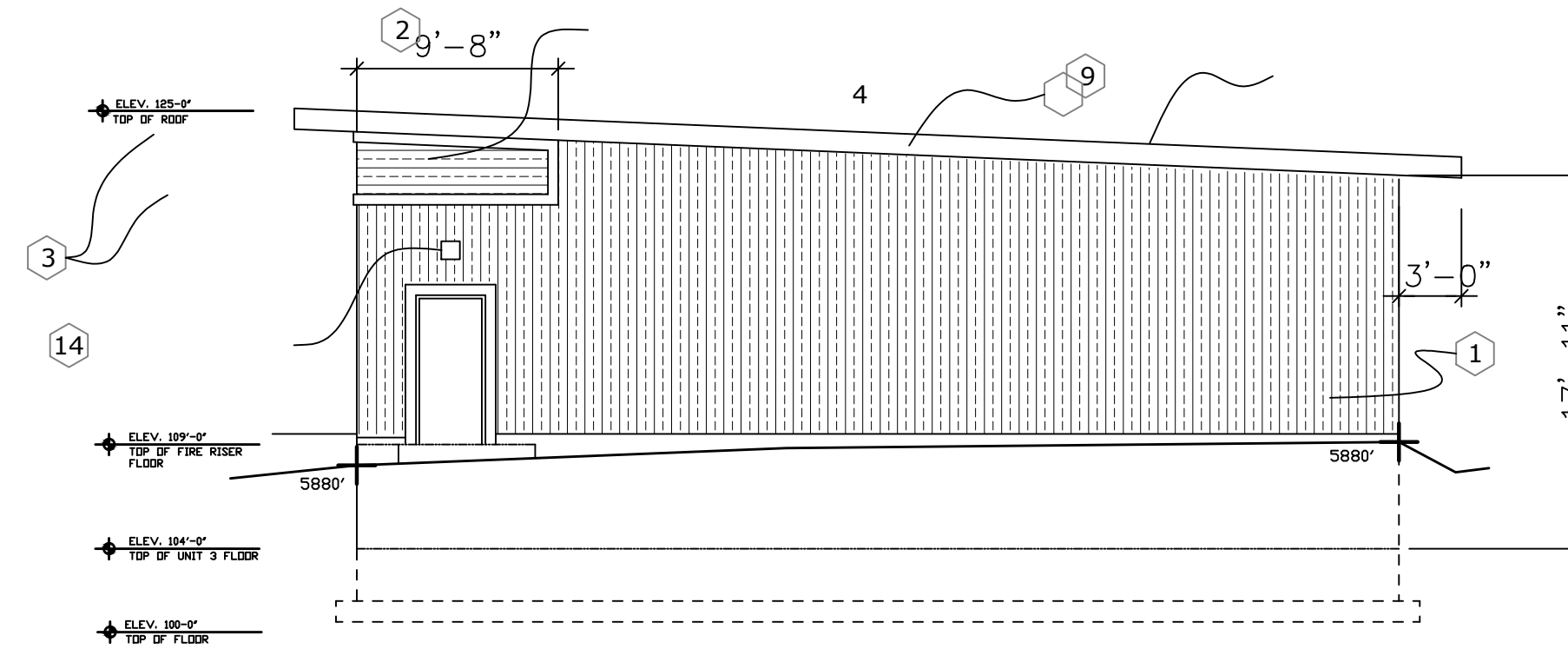
**KEY NOTES:**

- 1 BUILDING: RIGID METAL SIDING: VERTICAL COLOR: ASH GREY
- 2 ACCENT BAND: RIGID METAL SIDING: HORIZONTAL COLOR: CHARCOAL GREY
- 3 BREAK METAL TRIM: POWDER COAT OR PAINT COLOR: 2 SHADES DARKER THAN ACCENT BAND
- 4 METAL FASCIA: COLOR: CHARCOAL GREY
- 5 STOREFRONT GLASS AND FRAMES: CHARCOAL GREY COLOR: MATCH BREAK METAL FINISH
- 6 STEEL GARAGE DOORS: INSULATED COLOR: MATCH ACCENT SIDING
- 7 PRE-FABRICATED ALUMINUM AWNING. SEE STRUCT. DWGS FOR FRAMING AND MOUNTING. COLOR TBD
- 8 POWDER COATED STEEL SUPPORT STRUTS
- 9 ROOFING: RIGID METAL ROOFING: COLOR: SPECK 2000 BURNISHED SLATE
- 10 CONCRETE RETAINING WALL. SEE CIVIL DWGS.
- 11 PHANTOM LINE INDICATES STEPPED FOUNDATION WALL BEYOND METAL SIDING.
- 12 LINE OF UNIT DEMISING WALL BEYOND.
- 13 STEPPED FOUNDATION: SEE FOUNDATION PLAN
- 14 DOWN LIGHTING TBD.
- 15 LOADING DOCK BUMPER ANCHORED TO CONCRETE FACE.

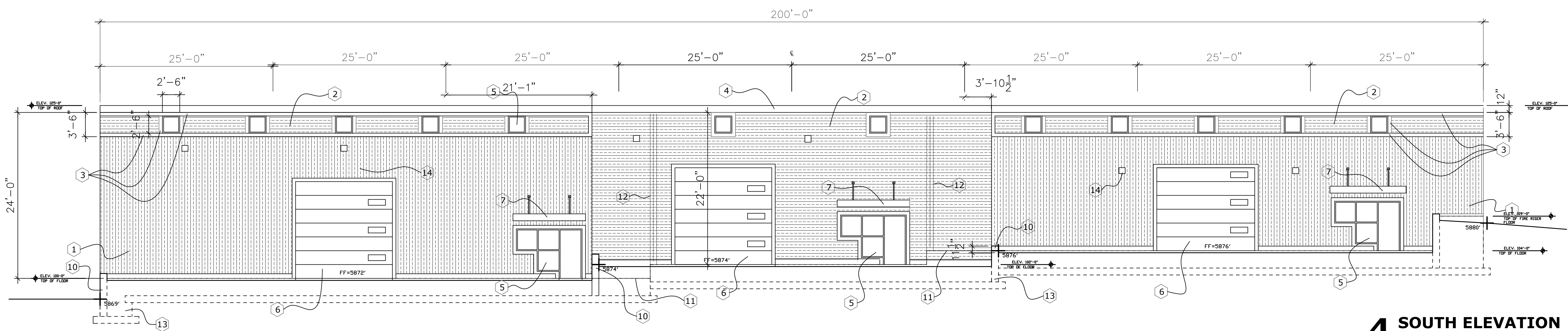
**PROGRESS SET**



**2 WEST ELEVATION**  
SCALE: 1/8"=1'-0"



**3 EAST ELEVATION**  
SCALE: 1/8"=1'-0"



**4 SOUTH ELEVATION**  
SCALE: 1/8"=1'-0"

**PROJECT: BRAYLEN PROPERTIES WAREHOUSE  
4190 HANCOCK EXPWY. COLORADO SPRINGS CO 80911**

**SHEET: EXTERIOR ELEVATIONS**

date: 12/07/23

REV:

**A-4**