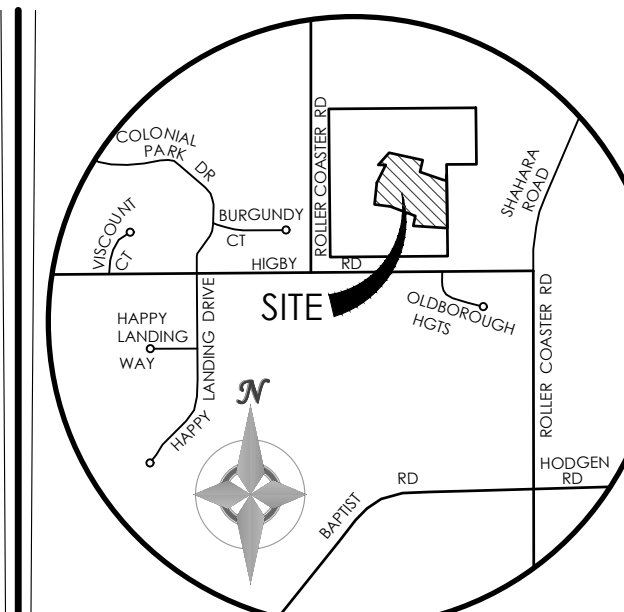


CONSTRUCTION PLANS for JACKSON RANCH FILING NO. 3

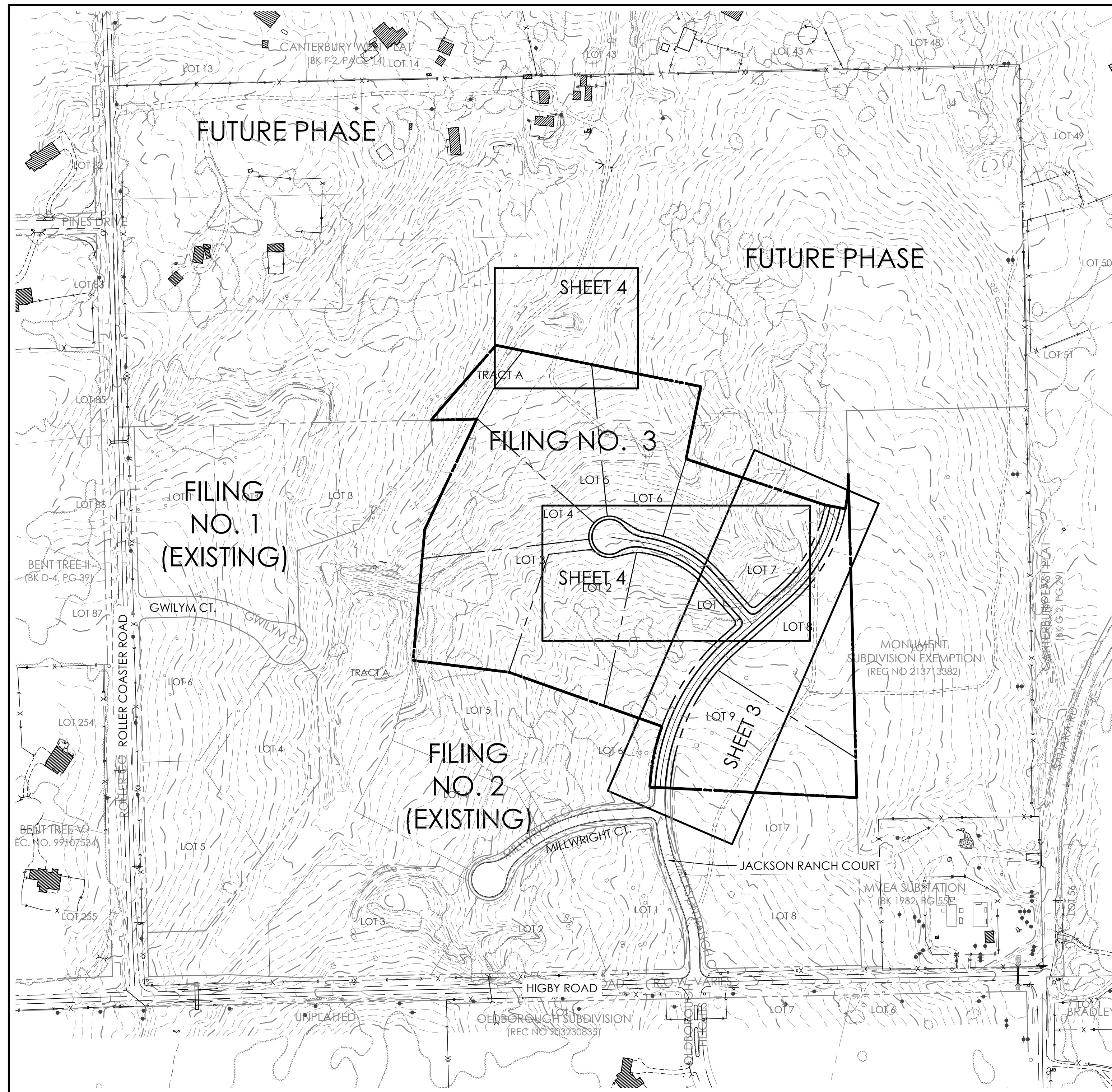
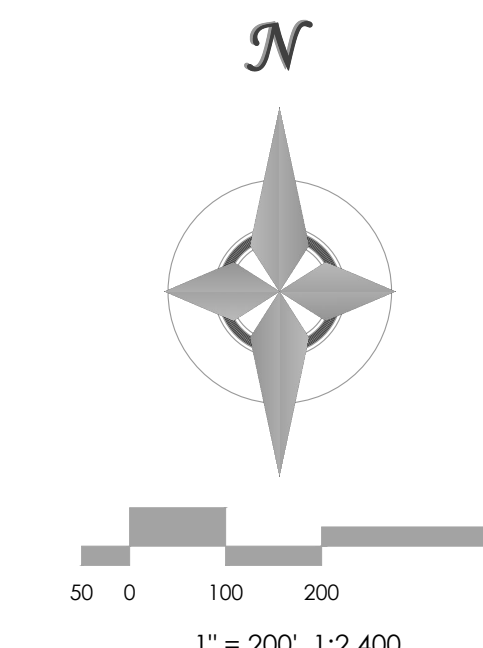
SECTION 21, TOWNSHIP 11 SOUTH, RANGE 66 WEST OF THE 6TH P.M., EL PASO
COUNTY, COLORADO



VICINITY MAP

NOT TO SCALE
BENCHMARK
THE BENCHMARK FOR THESE PLANS IS THE TOP OF PANEL POINT "SW", LOCATED NORTHWEST OF ROLLER COASTER ROAD & HIGBY ROAD. ELEVATION = 7461.14' (NAVDS88).

BASIS OF BEARINGS: THE SOUTH LINE OF THE NW QUARTER OF SEC 21, T 11 S, R 66 W OF THE 6TH P.M., EL PASO COUNTY, COLORADO, S88°46'41"W, A DISTANCE OF 2639.80 FEET & MONUMENTED BY A 2 1/2" DIA. ALUMINUM CAP LS #23890 ON THE EAST & A 2 1/2" DIA. ALUMINUM CAP LS #9853 ON THE WEST



ABBREVIATIONS

EL	ELEVATION	ROW	RIGHT-OF-WAY
PC	POINT OF CURVATURE	R	RADIUS
PI	POINT OF INTERSECTION	T	TANGENT
PT	POINT OF TANGENCY	L	LENGTH
PCR	POINT OF CURVE RETURN	LF	LINEAR FEET
PRC	POINT OF REVERSE CURVATURE	CL	CENTERLINE
PVC	POINT OF VERTICAL CURVATURE	X,XX' R	DIMENSION RIGHT OF CL
PVI	POINT OF VERTICAL INTERSECTION	X,XX' L	DIMENSION LEFT OF CL
PVT	POINT OF VERTICAL TANGENCY	PL	PROPERTY LINE
GB	GRADE BREAK	PVRC	POINT OF VERT REVERSE CURVATURE
CSP	CORRUGATED STEEL PIPE	VC	VERTICAL CURVE
RCP	REINFORCED CONCRETE PIPE	AP	ANGLE POINT
CBC	CONCRETE BOX CULVERT	STA	STATION
TBC	TOP BACK CURB	INV	INVERT
TC	TOP OF CURB	RG	RAIN GARDEN
BT	BEGIN TAPER	SFB	SAND FILTER BASIN
ET	END TAPER		
EC	EDGE OF CONCRETE		

LEGEND

EXISTING	PROPOSED
BOUNDARY LINE	BOUNDARY LINE
ADJACENT BOUNDARY LINE	LOT LINE
EASEMENT LINE	EASEMENT LINE
INDEX CONTOUR	INDEX CONTOUR
INTERMEDIATE CONTOUR	INTERMEDIATE CONTOUR
TEST HOLE LOCATION	SLOPE / GRADE
CURB AND GUTTER	SPOT ELEVATION
SIGN	
FENCE	
LIGHT POLE	
MANHOLE	
UTILITY POLE	
MISC OBJECT	
PILE	
CULVERT	
ROCK	
MAILBOX	
TREE	
RIPRAP	
POLE-ANCHOR	

SHEET INDEX

PLAN SET SHEET NO.	SHEET TITLE	MVE DRAWING NO.
C1.0 (1 OF 5)	COVER SHEET	61044-CON-CS
C1.1 (2 OF 5)	NOTES / CONSTRUCTION DETAILS	61044-CON-GN
C1.2 (3 OF 5)	PLAN / PROFILE	61044-CON-PP1
C1.3 (4 OF 5)	PLAN / PROFILE	61044-CON-PP2
C1.4 (5 OF 5)	EROSION CONTROL PLAN	61044-CON-EC

COMPANIES AND AGENCIES

OWNER/DEVELOPER

FOUR GATES LAND DEVELOPMENT LLC
17435 ROLLER COASTER ROAD
MONUMENT, CO 80132
(719) 488-9329

ENGINEER

M.V.E., INC.
1903 LELARAY STREET, STE 200
COLORADO SPRINGS, CO 80909
(719) 635-5736

EL PASO COUNTY PLANNING

EPC PLANNING AND COMMUNITY DEVELOPMENT
2880 INTERNATIONAL CIRCLE, SUITE 110
COLORADO SPRINGS, CO 80910
(719) 520-6300

STREETS AND RIGHTS-OF-WAY

EPC DEPARTMENT OF PUBLIC WORKS
3275 AKERS DRIVE
COLORADO SPRINGS, CO 80922
(719) 520-6460

ELECTRIC

MOUNTAIN VIEW ELECTRIC ASSOCIATION
11140 EAST WOODMEN ROAD
FALCON, CO 80831
(719) 495-2283

TELEPHONE

CENTURYLINK
555 TECH CENTER DRIVE SUITE 110
COLORADO SPRINGS, CO 80919
866.301.9889

NATURAL GAS

BLACK HILLS ENERGY
18965 BASE CAMP RD, A-7
MONUMENT, CO 80132
719.488.0739

OWNERS STATEMENT

I, THE OWNER/DEVELOPER HAVE READ AND WILL COMPLY WITH ALL OF THE REQUIREMENTS SPECIFIED IN THESE DETAILED PLANS AND SPECIFICATIONS.

MARLENE J. BROWN _____ DATE _____
MANAGER, FOUR GATES LAND DEVELOPMENT LLC

DESIGN ENGINEER'S STATEMENT:

THESE DETAILED PLANS AND SPECIFICATIONS WERE PREPARED UNDER MY DIRECTION AND SUPERVISION. SAID PLANS AND SPECIFICATIONS HAVE BEEN PREPARED ACCORDING TO THE CRITERIA ESTABLISHED BY THE COUNTY FOR DETAILED ROADWAY, DRAINAGE, GRADING AND EROSION CONTROL PLANS AND SPECIFICATIONS, AND SAID PLANS AND SPECIFICATIONS ARE IN CONFORMITY WITH APPLICABLE MASTER DRAINAGE PLANS AND MASTER TRANSPORTATION PLANS. SAID PLANS AND SPECIFICATIONS MEET THE PURPOSES FOR WHICH THE PARTICULAR ROADWAY AND DRAINAGE FACILITIES ARE DESIGNED AND ARE CORRECT TO THE BEST OF MY KNOWLEDGE AND BELIEF. I ACCEPT RESPONSIBILITY FOR ANY LIABILITY CAUSED BY ANY NEGLIGENT ACTS, ERRORS OR OMISSIONS ON MY PART IN PREPARATION OF THESE DETAILED PLANS AND SPECIFICATIONS

DAVID R. GORMAN, P.E. _____ COLORADO NO. 31672 _____ DATE _____
FOR AND ON BEHALF OF M.V.E., INC.

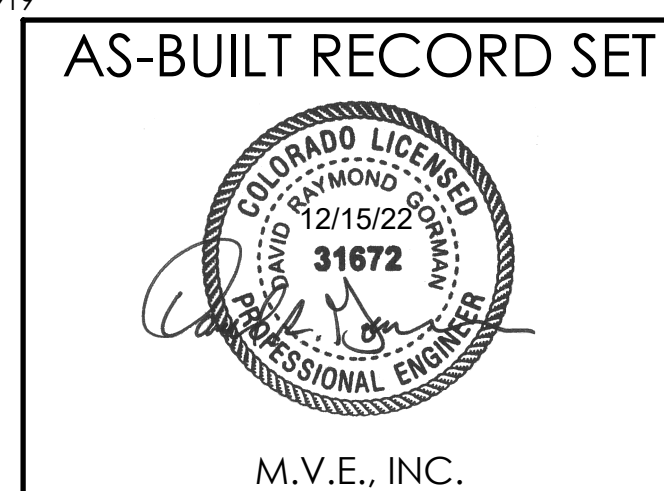
EL PASO COUNTY:

COUNTY PLAN REVIEW IS PROVIDED ONLY FOR GENERAL CONFORMANCE WITH COUNTY DESIGN CRITERIA. THE COUNTY IS NOT RESPONSIBLE FOR THE ACCURACY AND ADEQUACY OF THE DESIGN, DIMENSIONS, AND/OR ELEVATIONS WHICH SHALL BE CONFIRMED AT THE JOB SITE. THE COUNTY THROUGH THE APPROVAL OF THIS DOCUMENT ASSUMES NO RESPONSIBILITY FOR COMPLETENESS AND/OR ACCURACY OF THIS DOCUMENT.

FILED IN ACCORDANCE WITH THE REQUIREMENTS OF THE EL PASO COUNTY LAND DEVELOPMENT CODE, DRAINAGE CRITERIA MANUAL, AND ENGINEERING CRITERIA MANUAL AS AMENDED.

IN ACCORDANCE WITH ECM SECTION 1.12, THESE CONSTRUCTION DOCUMENTS WILL BE VALID FOR CONSTRUCTION FOR A PERIOD OF 2 YEARS FROM THE DATE SIGNED BY THE EL PASO COUNTY ENGINEER. IF CONSTRUCTION HAS NOT STARTED WITHIN THOSE 2 YEARS, THE PLANS WILL NEED TO BE RESUBMITTED FOR APPROVAL, INCLUDING PAYMENT OF REVIEW FEES AT THE PLANNING AND COMMUNITY DEVELOPMENT DIRECTORS DISCRETION.

JENNIFER IRVINE, P.E. _____ DATE _____
COUNTY ENGINEER / ECM ADMINISTRATOR PCD PROJ. NO. SF-17-017



REVISIONS

DESIGNED BY CCC
DRAWN BY TJW
CHECKED BY _____
AS-BUILT BY _____
CHECKED BY _____

**JACKSON RANCH
FILING NO. 3
COVER SHEET**

C1.0
MVE PROJECT 61044
MVE DRAWING CON-CS

**December 16, 2017
SHEET 1 OF 5**

GENERAL NOTES

- 1. ALL NEW CONSTRUCTION IS TO CONFORM TO THE SPECIFICATIONS OF EL PASO COUNTY.
2. UNDERGROUND FACILITIES, STRUCTURES AND UTILITIES HAVE BEEN DRAWN FROM AVAILABLE RECORDS AND/OR SURFACE EVIDENCE.
3. EXISTING CONDITIONS SHALL BE VERIFIED BY THE GENERAL CONTRACTOR...

Table with 4 columns: GRASS, VARIETY, AMOUNT IN PLS LBS. PER AC. Includes rows for Sidecloats Gramma, Western Wheatgrass, Slender Wheatgrass, Little Bluestem, Sand Dropped Seed, Switch Grass, Weeping Love Grass.

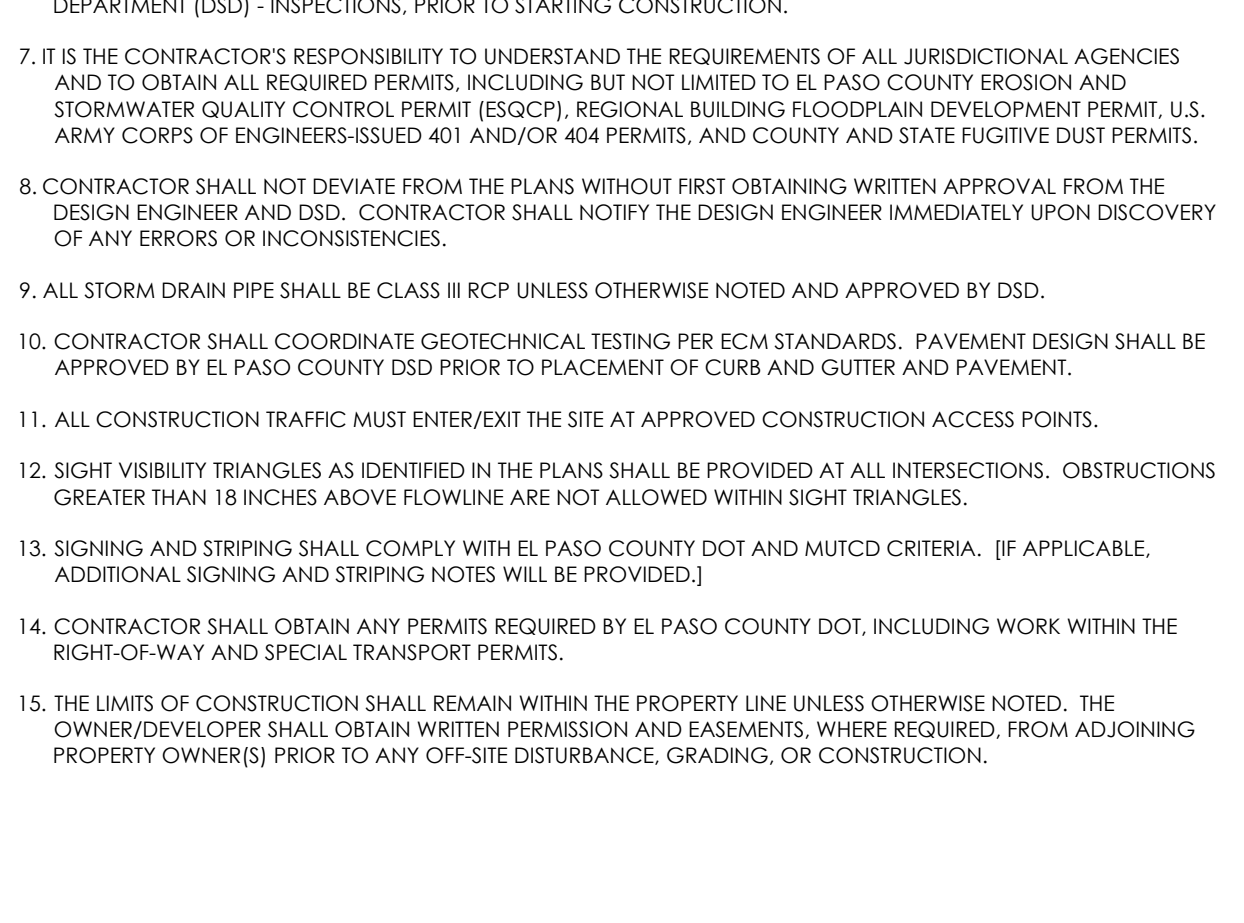
STANDARD EL PASO COUNTY GRADING & EROSION CONTROL PLAN NOTES

- 1. CONSTRUCTION MAY NOT COMMENCE UNTIL A CONSTRUCTION PERMIT IS OBTAINED FROM DEVELOPMENT SERVICES AND A PRECONSTRUCTION CONFERENCE IS HELD WITH DEVELOPMENT SERVICES INSPECTORS.
2. STORMWATER DISCHARGES FROM CONSTRUCTION SITES SHALL NOT CAUSE OR THREATEN TO CAUSE POLLUTION, CONTAMINATION, OR DEGRADATION OF STATE WATERS...

- 22. INDIVIDUALS SHALL COMPLY WITH THE "COLORADO WATER QUALITY CONTROL ACT" (TITLE 25, ARTICLE 8, CRS), AND THE "CLEAN WATER ACT" (33 USC 1344).
23. ALL CONSTRUCTION TRAFFIC MUST ENTER/EXIT THE SITE AT APPROVED CONSTRUCTION ACCESS POINTS.
24. PRIOR TO ACTUAL CONSTRUCTION THE PERMITTEE SHALL VERIFY THE LOCATION OF EXISTING UTILITIES.

STANDARD EL PASO COUNTY CONSTRUCTION PLAN NOTES

- 1. ALL DRAINAGE AND ROADWAY CONSTRUCTION SHALL MEET THE STANDARDS AND SPECIFICATIONS OF THE CITY OF COLORADO SPRINGS/EL PASO COUNTY DRAINAGE CRITERIA MANUAL, VOLUMES 1 AND 2.
2. CONTRACTOR SHALL BE RESPONSIBLE FOR THE NOTIFICATION AND FIELD NOTIFICATION OF ALL EXISTING UTILITIES.
3. CONTRACTOR SHALL KEEP A COPY OF THESE APPROVED PLANS, THE GRADING AND EROSION CONTROL PLAN...



STANDARD EL PASO COUNTY SIGNING AND STRIPING NOTES

- 1. ALL SIGNS AND PAVEMENT MARKINGS SHALL BE IN COMPLIANCE WITH THE CURRENT MANUAL ON UNIFORM TRAFFIC CONTROL DEVICES (MUTCD).
2. REMOVAL OF EXISTING PAVEMENT MARKINGS SHALL BE ACCOMPLISHED BY A METHOD THAT DOES NOT MATERIALLY DAMAGE THE PAVEMENT.
3. ANY DEVIATION FROM THE STRIPING AND SIGNING PLAN SHALL BE APPROVED BY EL PASO COUNTY DEVELOPMENT SERVICES.

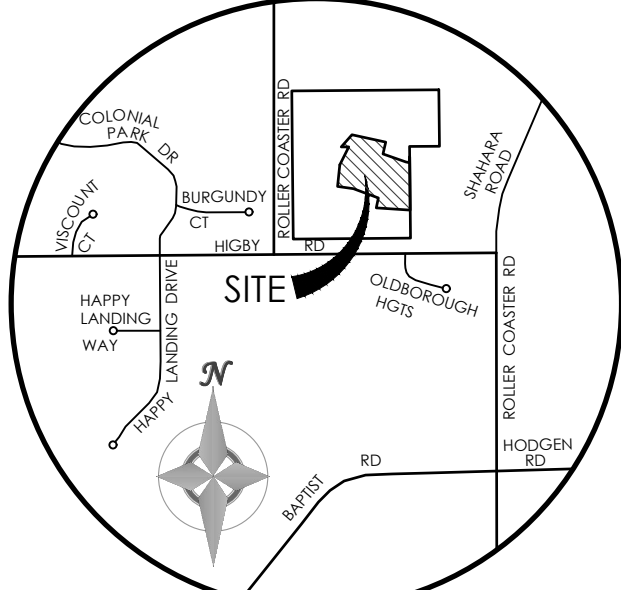
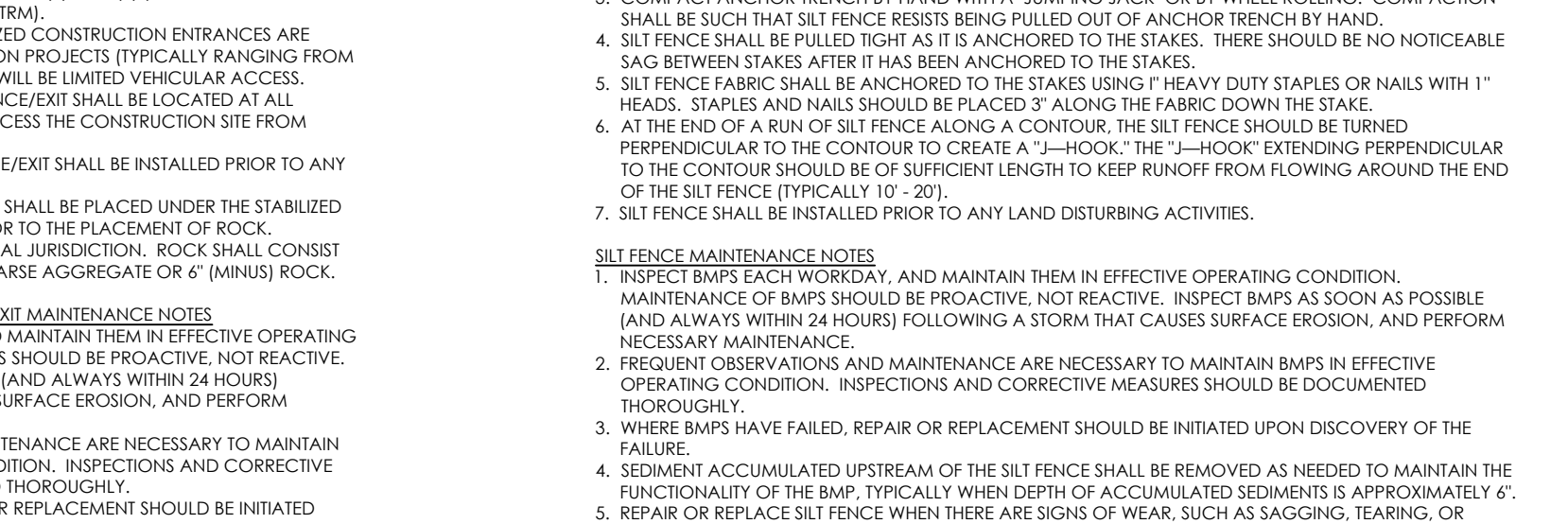
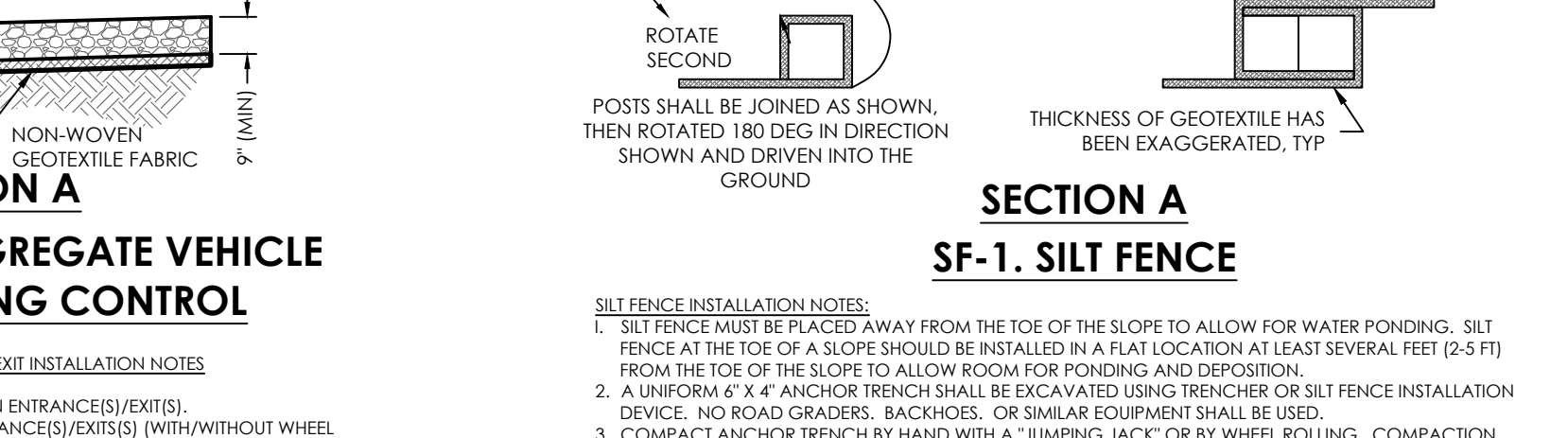
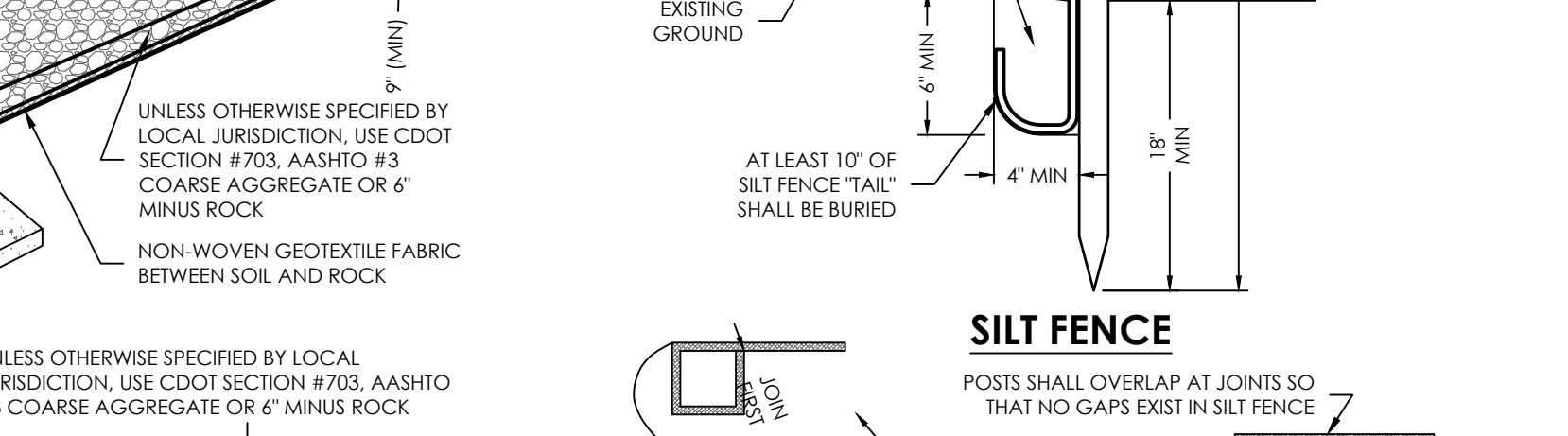
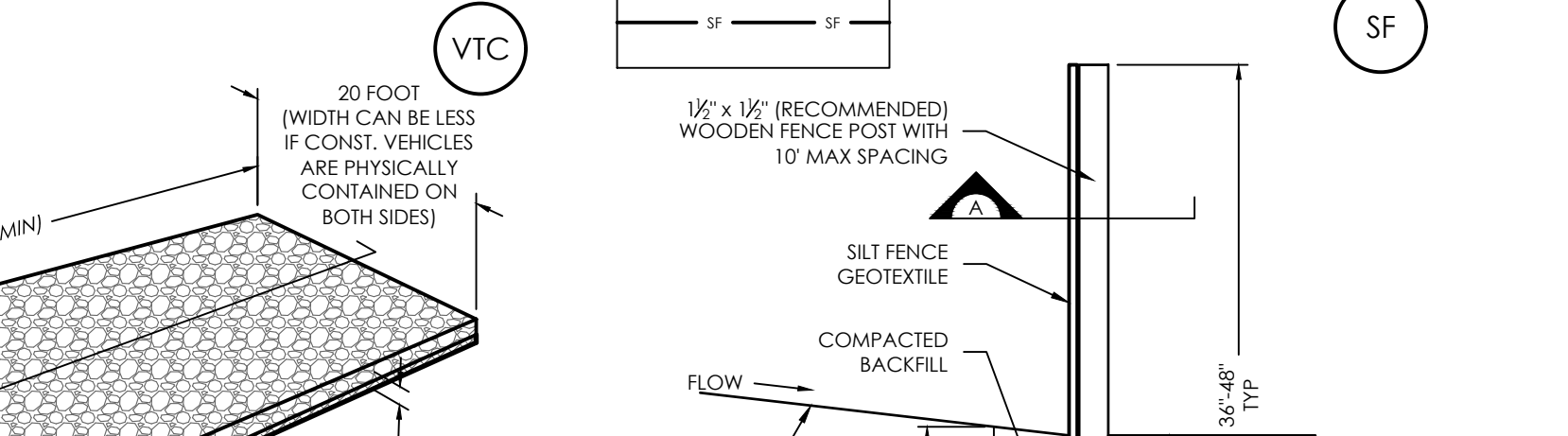
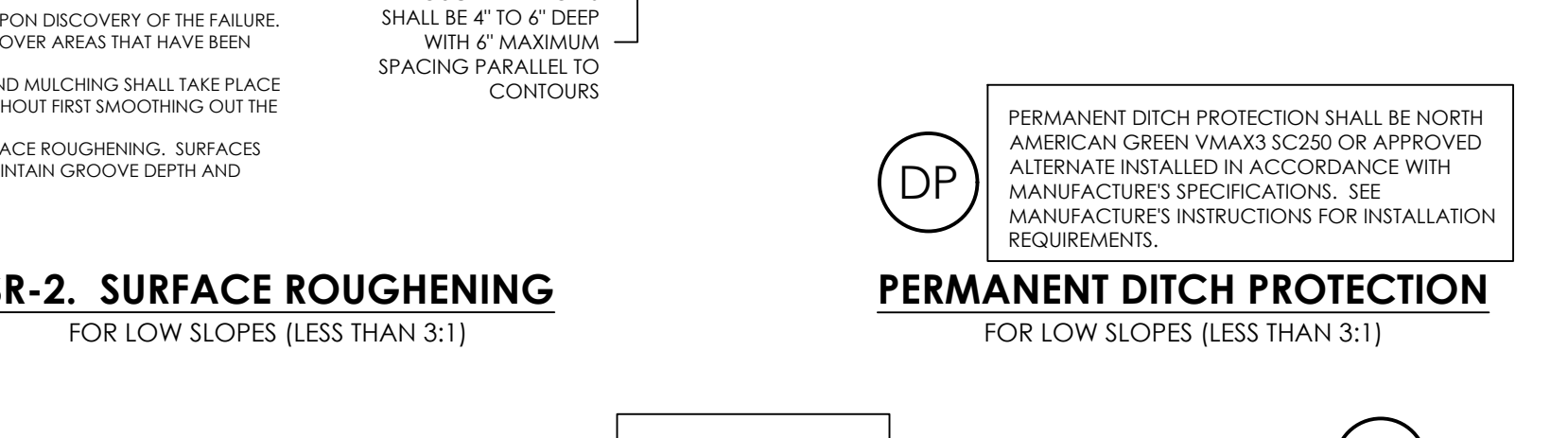
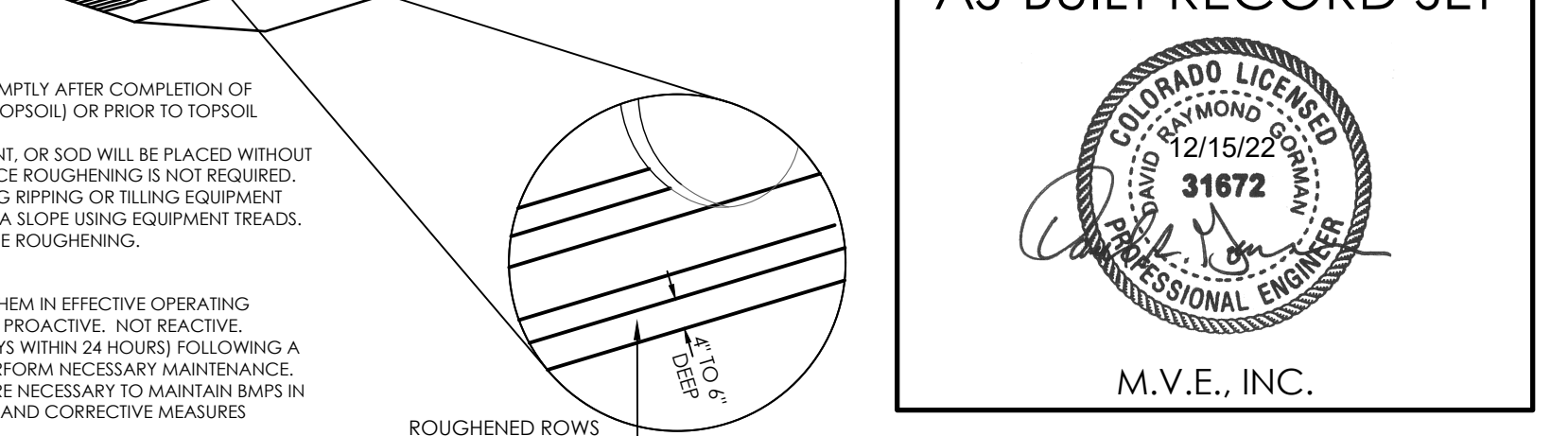
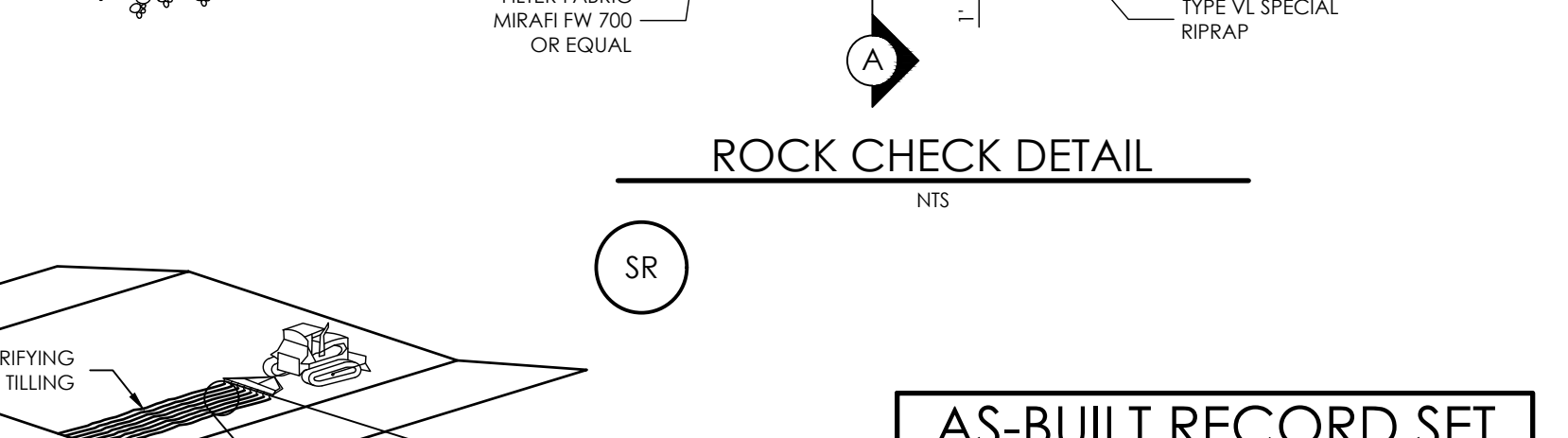
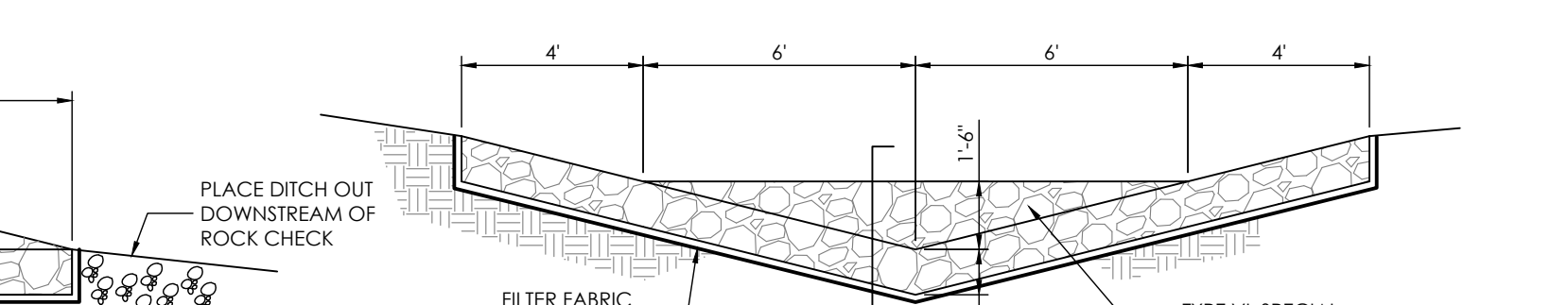
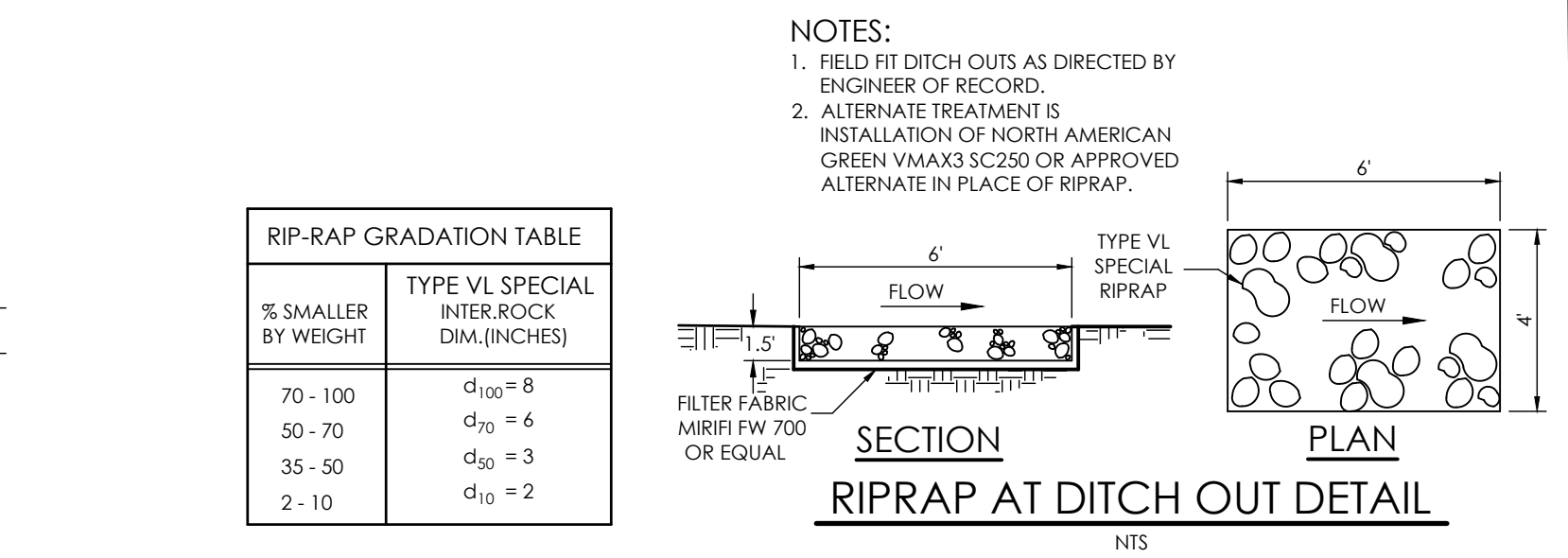
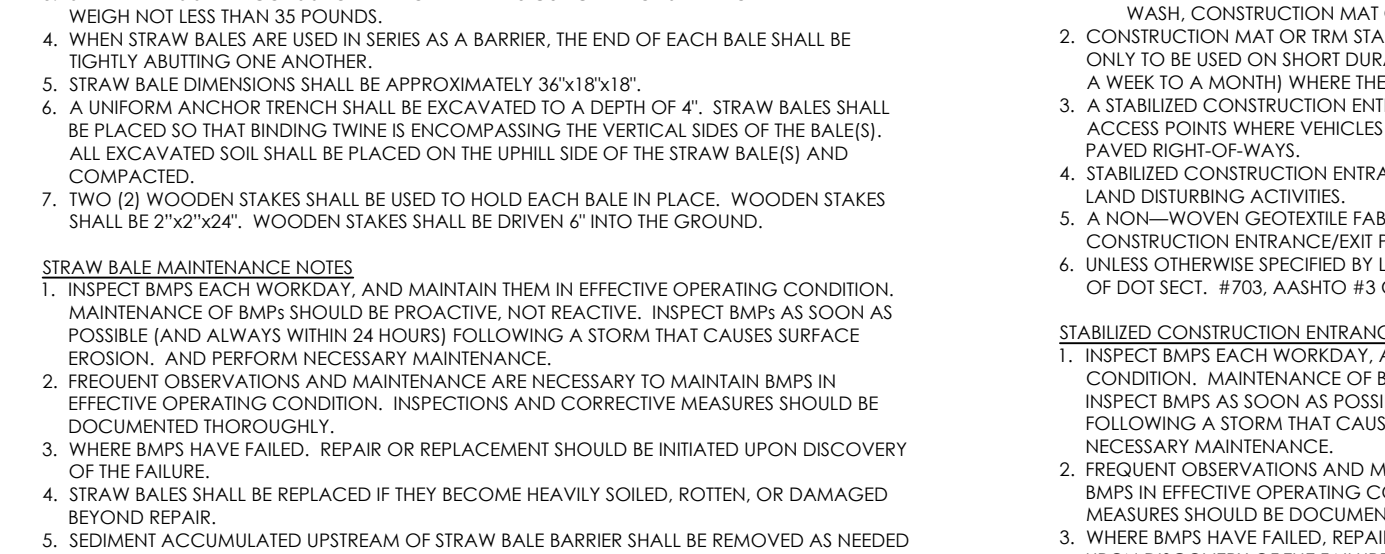
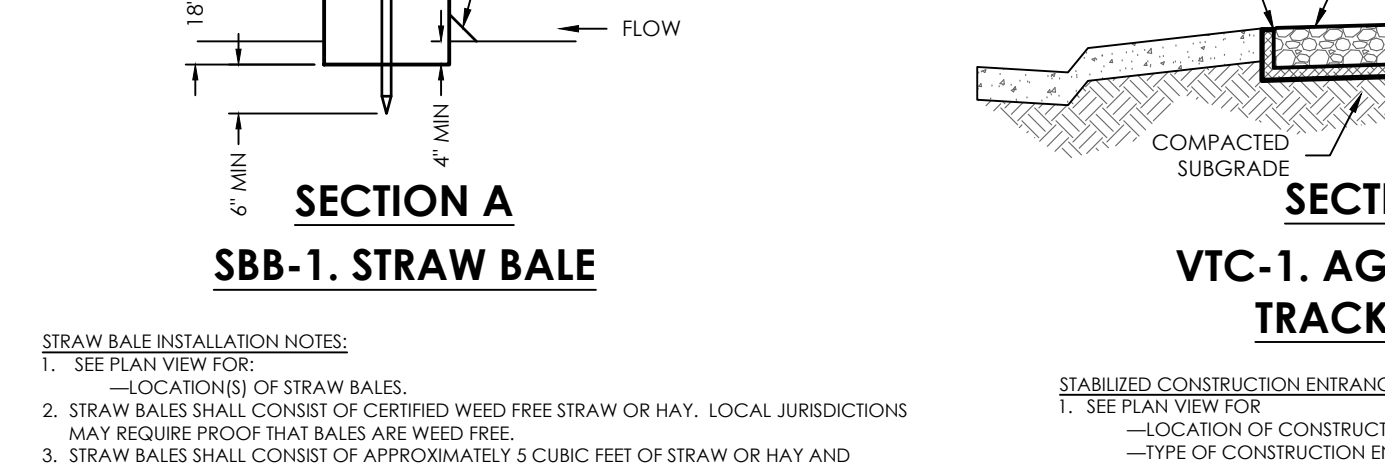
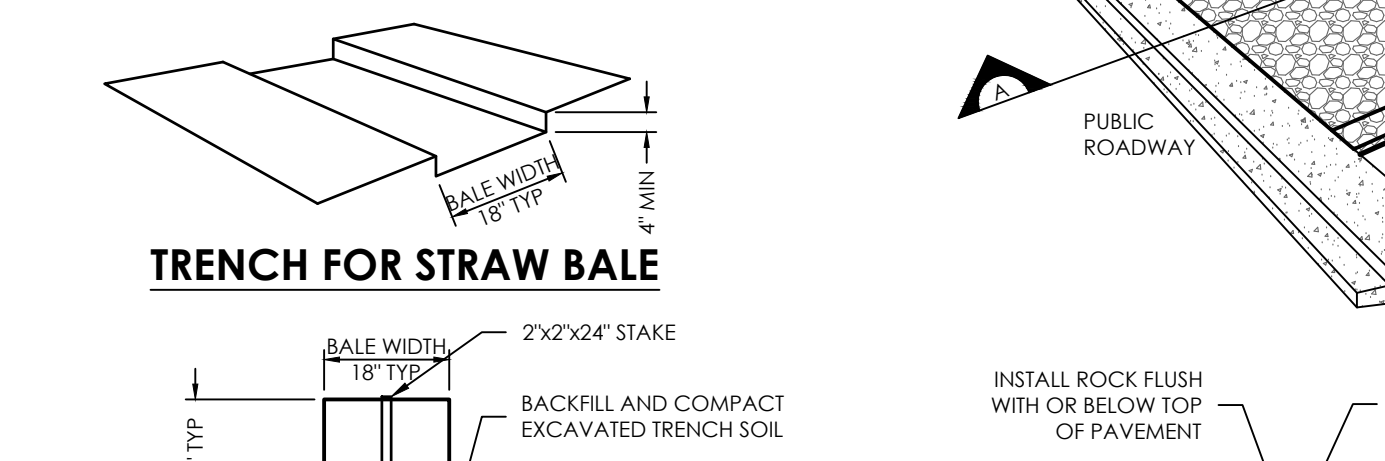
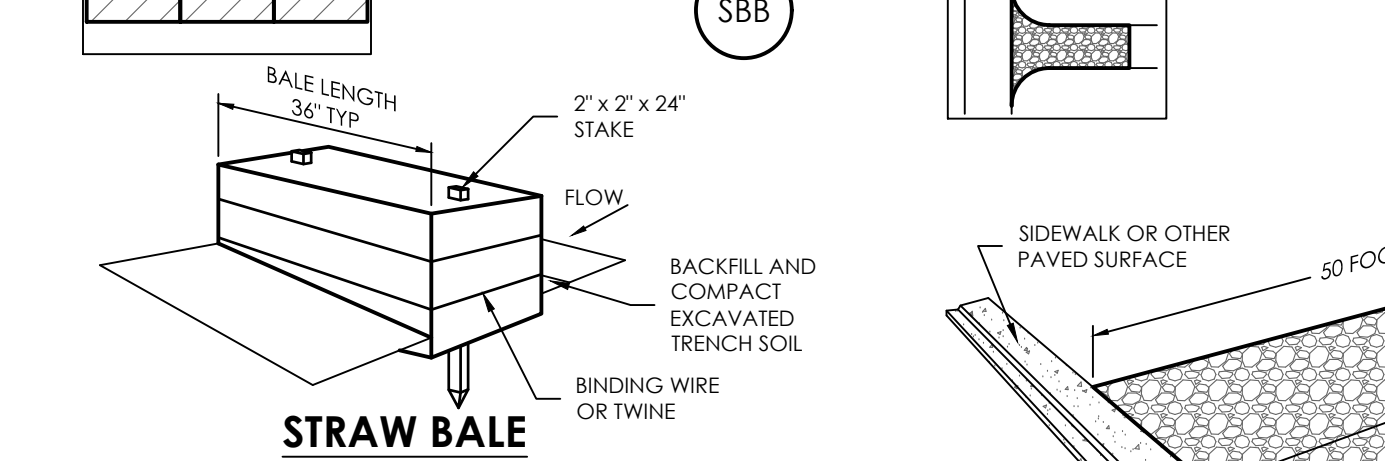
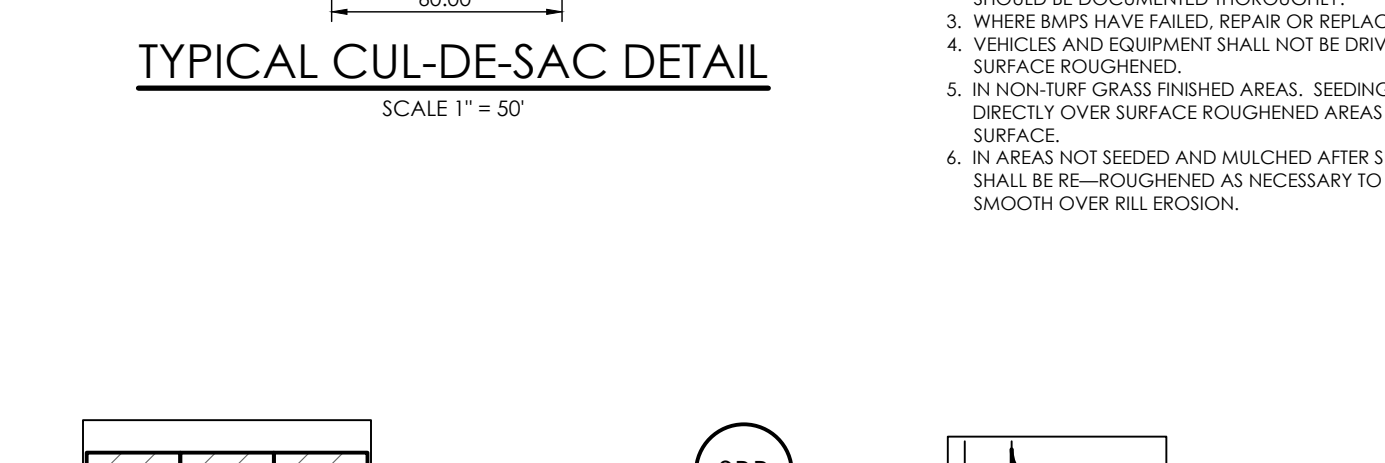
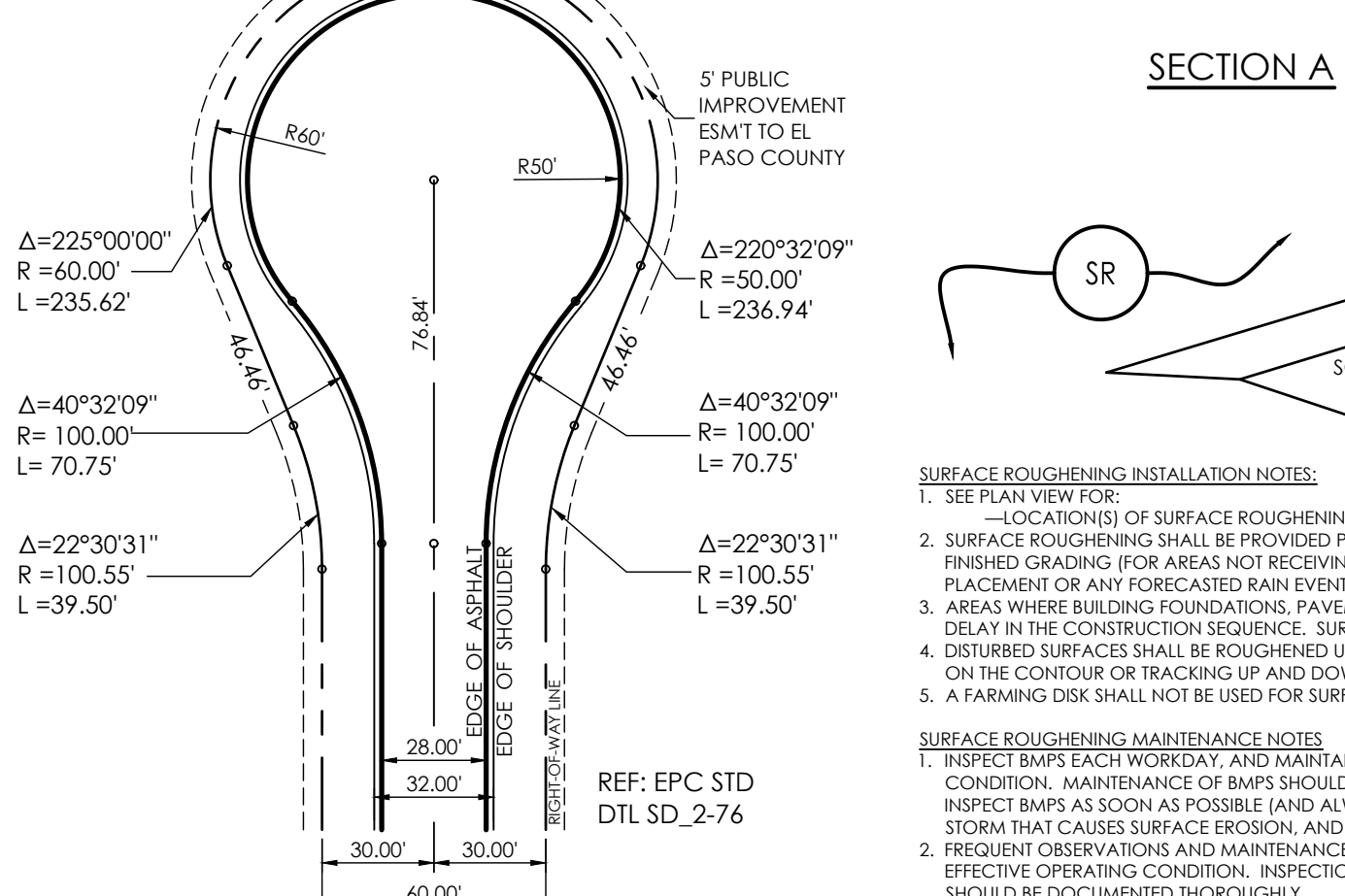
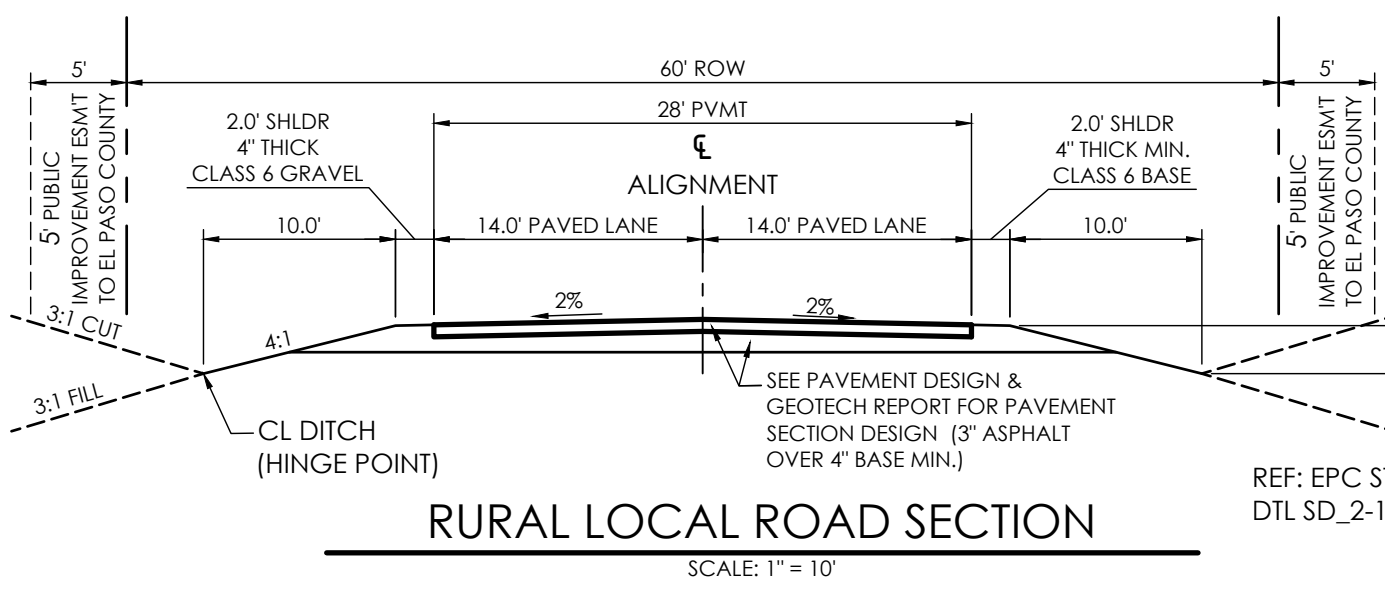
TOPOGRAPHIC SURVEY NOTES

- 1] THE EXISTING TOPOGRAPHIC BASE MAPPING WAS PREPARED BY LANDMARK MAPPING, LTD. INC. USING AERIAL PHOTOGRAPHIC DATA GATHERED ON JUNE 25, 2015.
2] ALL EXISTING UTILITIES SHOWN ON THIS SURVEY ARE FROM SURFACE EVIDENCE AND/OR FROM MAPS OBTAINED FROM UTILITY PROVIDERS.

PROJECT CONTROL:

- BASIS OF BEARINGS: THE SOUTH LINE OF THE NORTHWEST QUARTER OF SECTION 21, TOWNSHIP 11 SOUTH, RANGE 66 WEST OF THE 6TH P.M., EL PASO COUNTY, COLORADO, S88°46'41"W A DISTANCE OF 2639.80 FEET AND MONUMENTED BY A 2 1/2" DIAMETER ALUMINUM CAP LS #23890 ON THE EAST AND A 2 1/2" DIAMETER ALUMINUM CAP LS # 9853 ON THE WEST.
EAST MONUMENT: NORTHINGS: 8956.29' NORTHING: 5000.00' EASTING: 7639.19' WEST MONUMENT: NORTHINGS: 8956.29' NORTHING: 5000.00' EASTING: 7639.19'

CALL BEFORE YOU DIG... 1-800-922-1987. 48 HOURS BEFORE YOU DIG, CALL FOR LOCATIONS FOR FLAGGING AND MARKING GAS, ELECTRIC, WATER, AND FIBER OPTIC.



BENCHMARK: THE BENCHMARK FOR THESE PLANS IS THE TOP OF PANEL POINT 'SW', LOCATED NORTHWEST OF ROLLER COASTER ROAD & HIGBY ROAD. ELEVATION = 7461.14' (NAVD88).

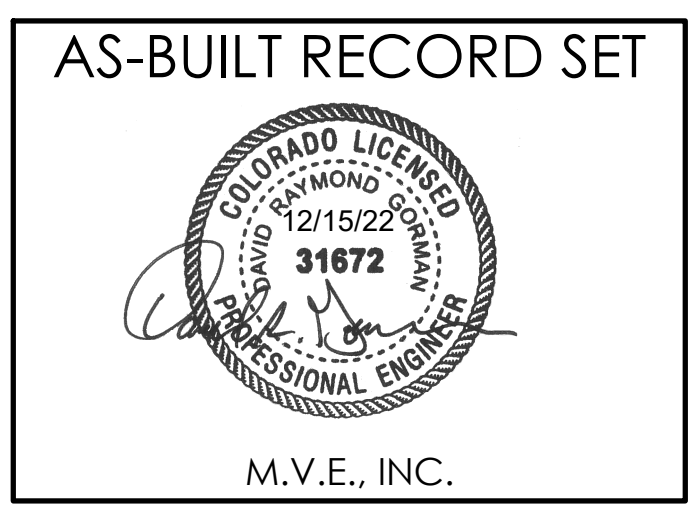
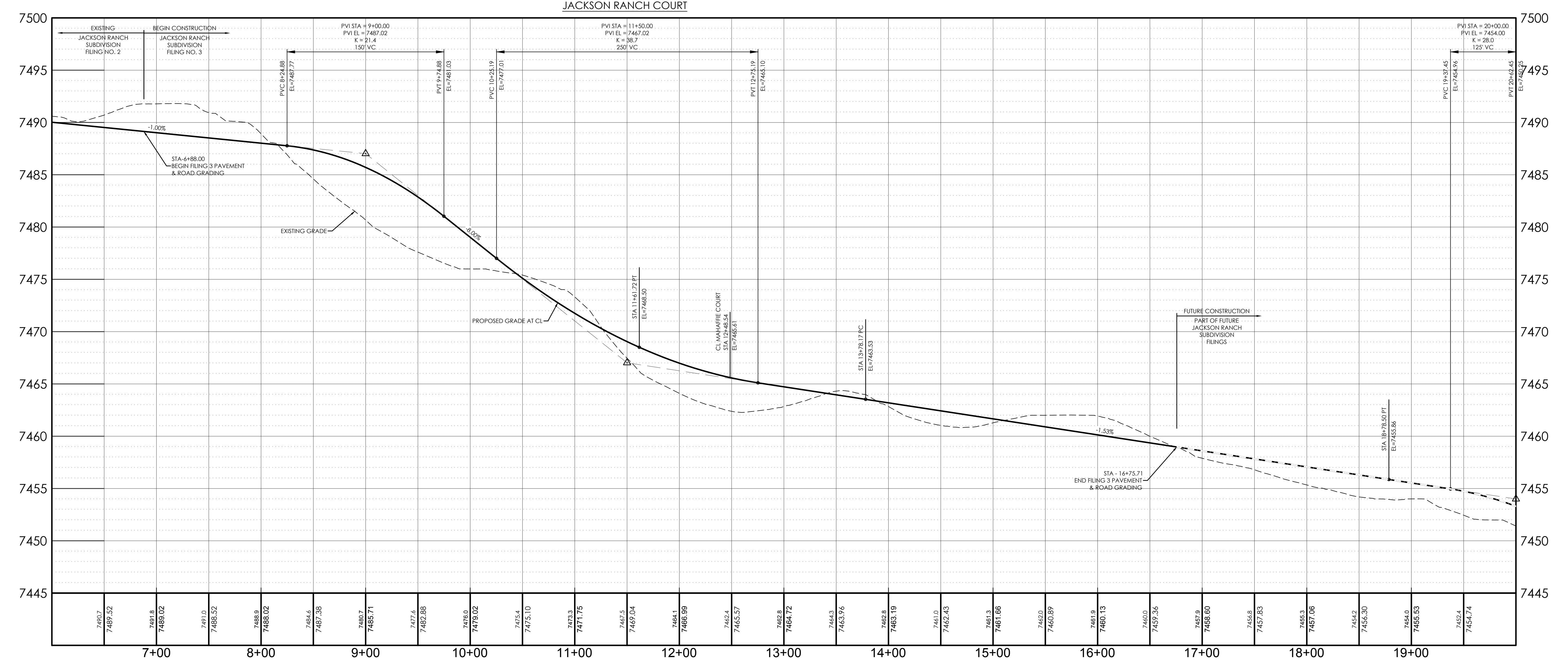
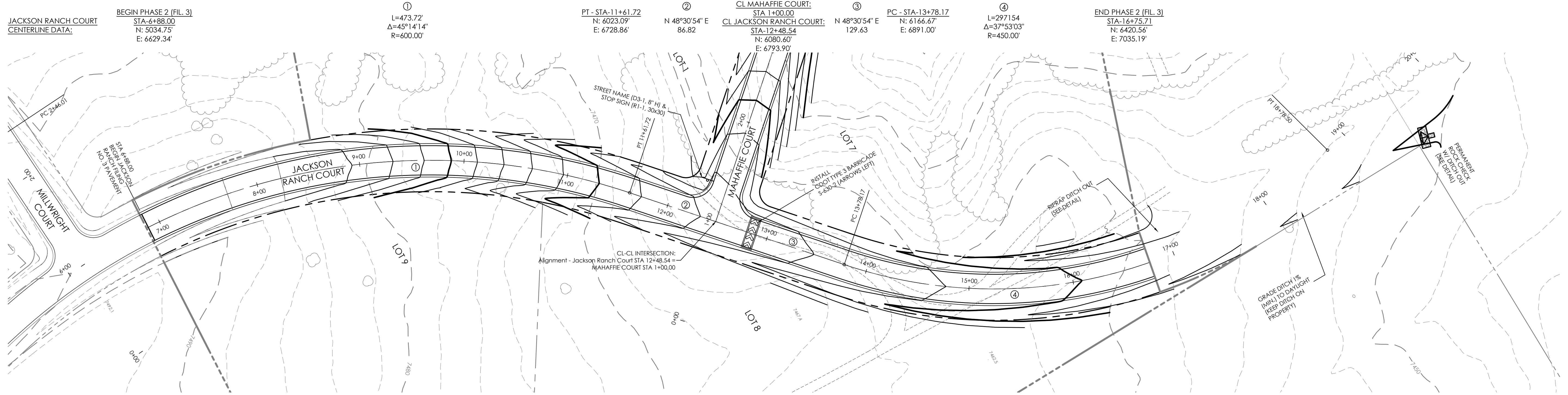
BASIS OF BEARINGS: THE SOUTH LINE OF THE NORTHWEST QUARTER OF SECTION 21, TOWNSHIP 11 SOUTH, RANGE 66 WEST OF THE 6TH P.M., EL PASO COUNTY, COLORADO, S88°46'41"W A DISTANCE OF 2639.80 FEET AND MONUMENTED BY A 2 1/2" DIAMETER ALUMINUM CAP LS #23890 ON THE EAST AND A 2 1/2" DIAMETER ALUMINUM CAP LS # 9853 ON THE WEST.

DESIGNED BY CCC, DRAWN BY TJW, CHECKED BY AS-BUILTS BY CHECKED BY.

JACKSON RANCH FILING NO. 3 GENERAL NOTES AND DETAILS C1.1 MVE PROJECT 61044 CON-GN MVE DRAWING

December 16, 2017 SHEET 2 OF 5

MVE, INC. ENGINEERS / SURVEYORS. 1903 Kearney Street, Suite 200 - Colorado Springs, CO 80909 719.635.5736

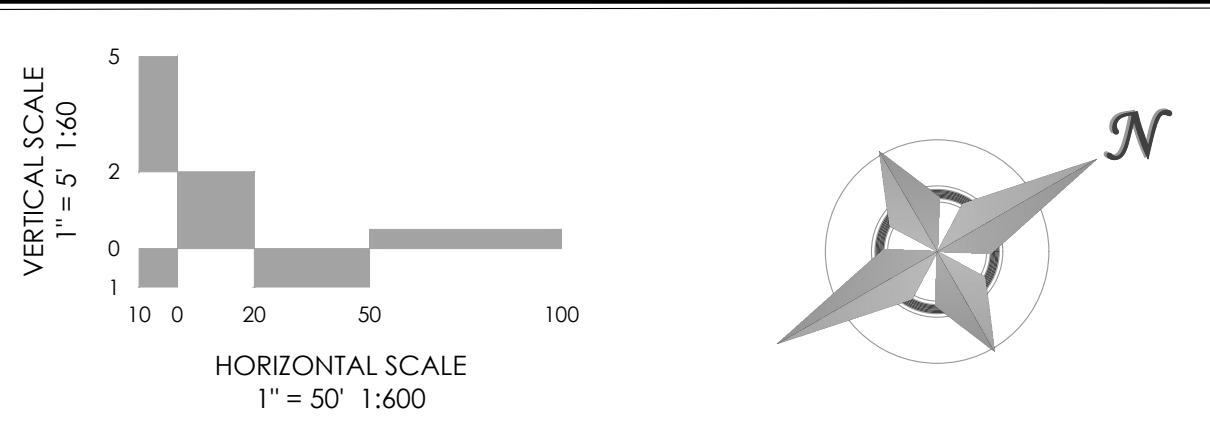


BENCHMARK: THE BENCHMARK FOR THESE PLANS IS THE TOP OF PANEL POINT "SW", LOCATED NORTHWEST OF ROLLER COASTER ROAD & HIGBY ROAD. ELEVATION = 7461.14' (NAVD88).

BASIS OF BEARINGS: THE SOUTH LINE OF THE NORTHWEST QUARTER OF SECTION 21, TOWNSHIP 11 SOUTH, RANGE 66 WEST OF THE 6TH P.M., EL PASO COUNTY, COLORADO, S88°46'41"W A DISTANCE OF 2639.80 FEET AND MONUMENTED BY A 2 1/2" DIAMETER ALUMINUM CAP LS #23890 ON THE EAST AND A 2 1/2" DIAMETER ALUMINUM CAP LS # 9853 ON THE WEST

DESIGN DATA:
 SIDEWALKS: WIDTH N/A
 LOCATION: Attached Detached
 DESIGN SPEED: 30 MPH
 CURB TYPE: 8" 12" 15" 18"
 ROW WIDTH: 60' FL-FL 28'
 STREET TYPE: RURAL LOCAL

PAVEMENT:
 TYPE: HMA PCC
 THICKNESS: _____
 COMPOSITE SECTION:
 HMA _____ BASE _____
 SUBGRADE STABILIZATION:
 CHEMICAL TYPE _____ MECHANICAL THICKNESS _____

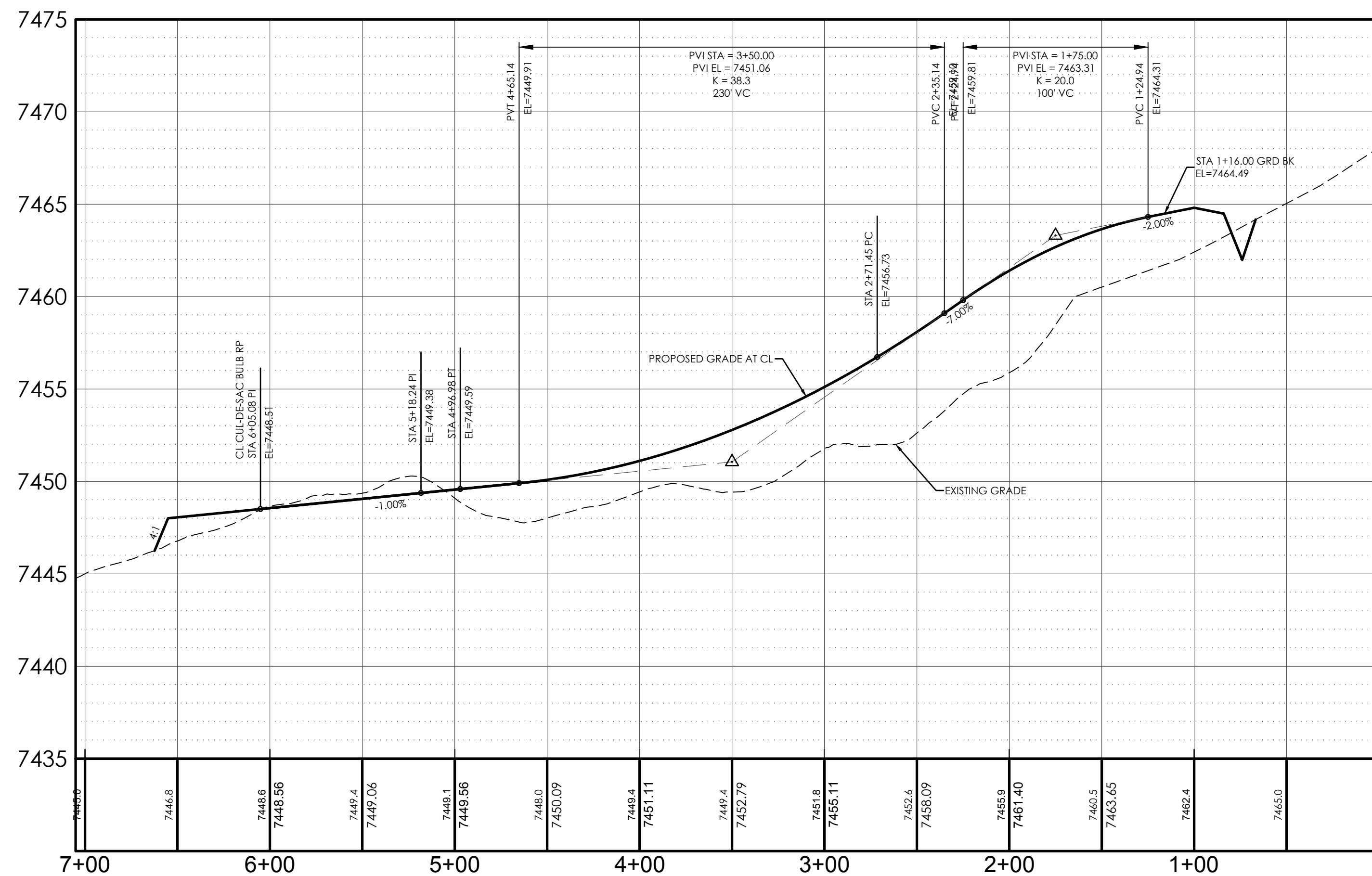
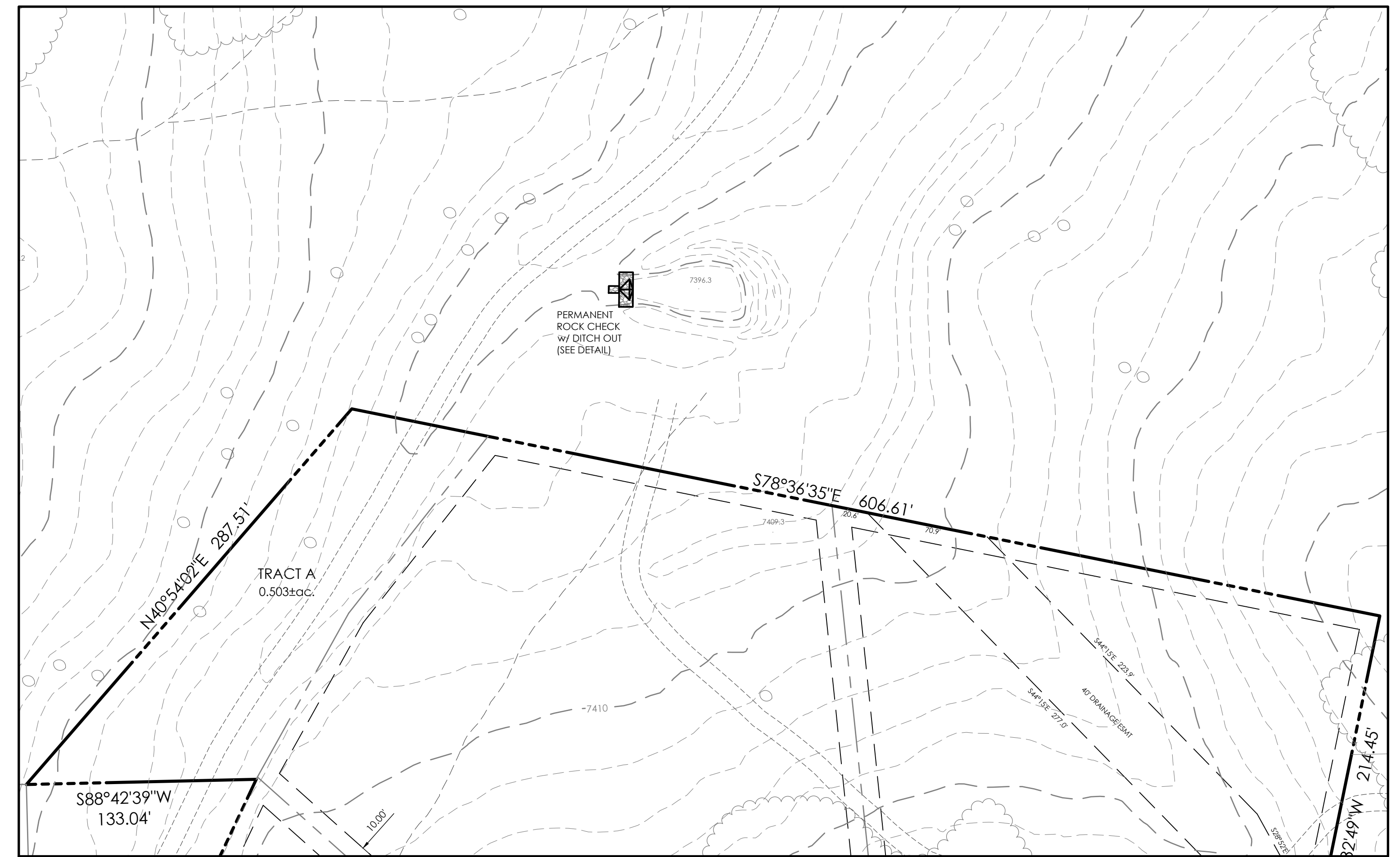
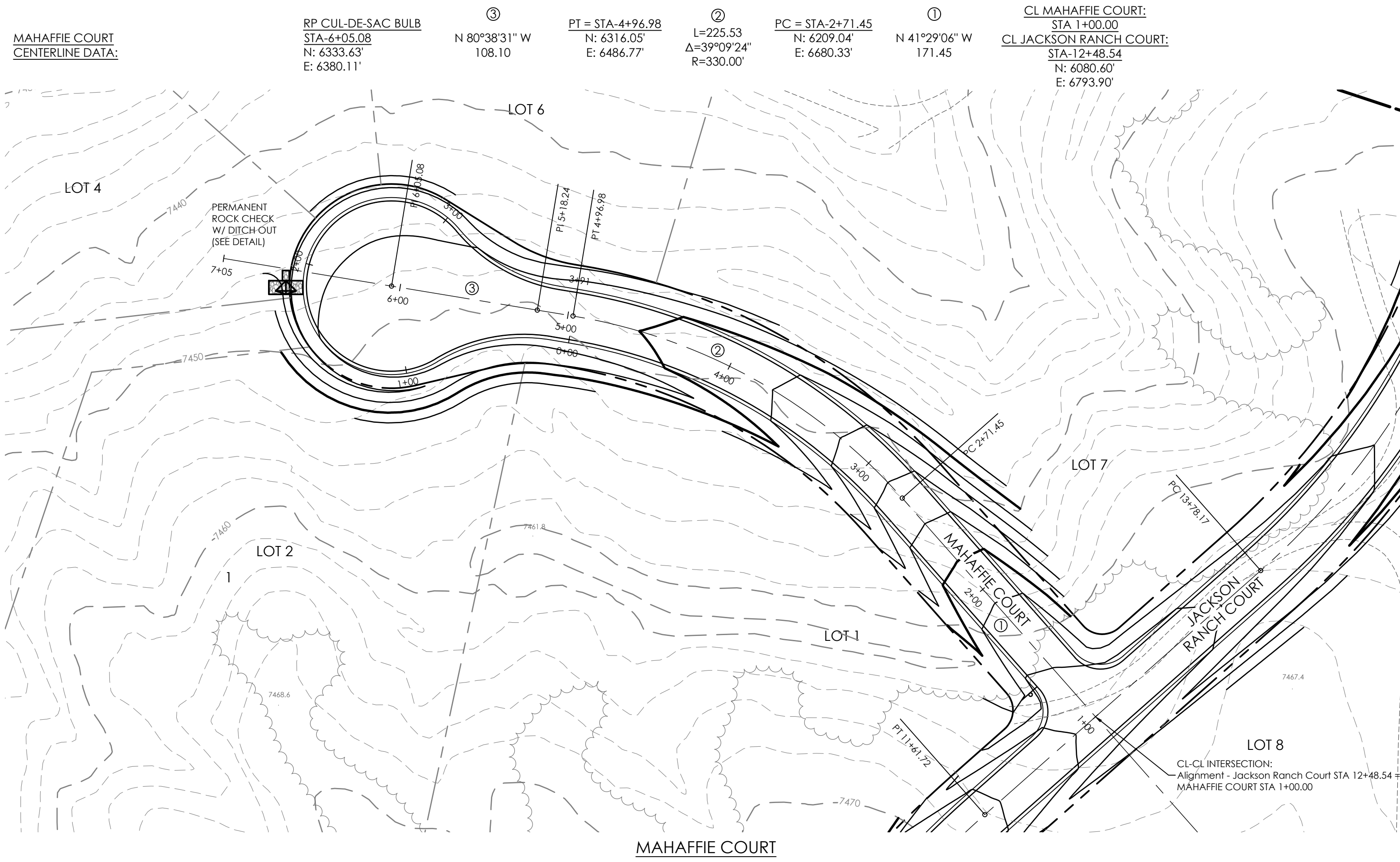


REVISIONS

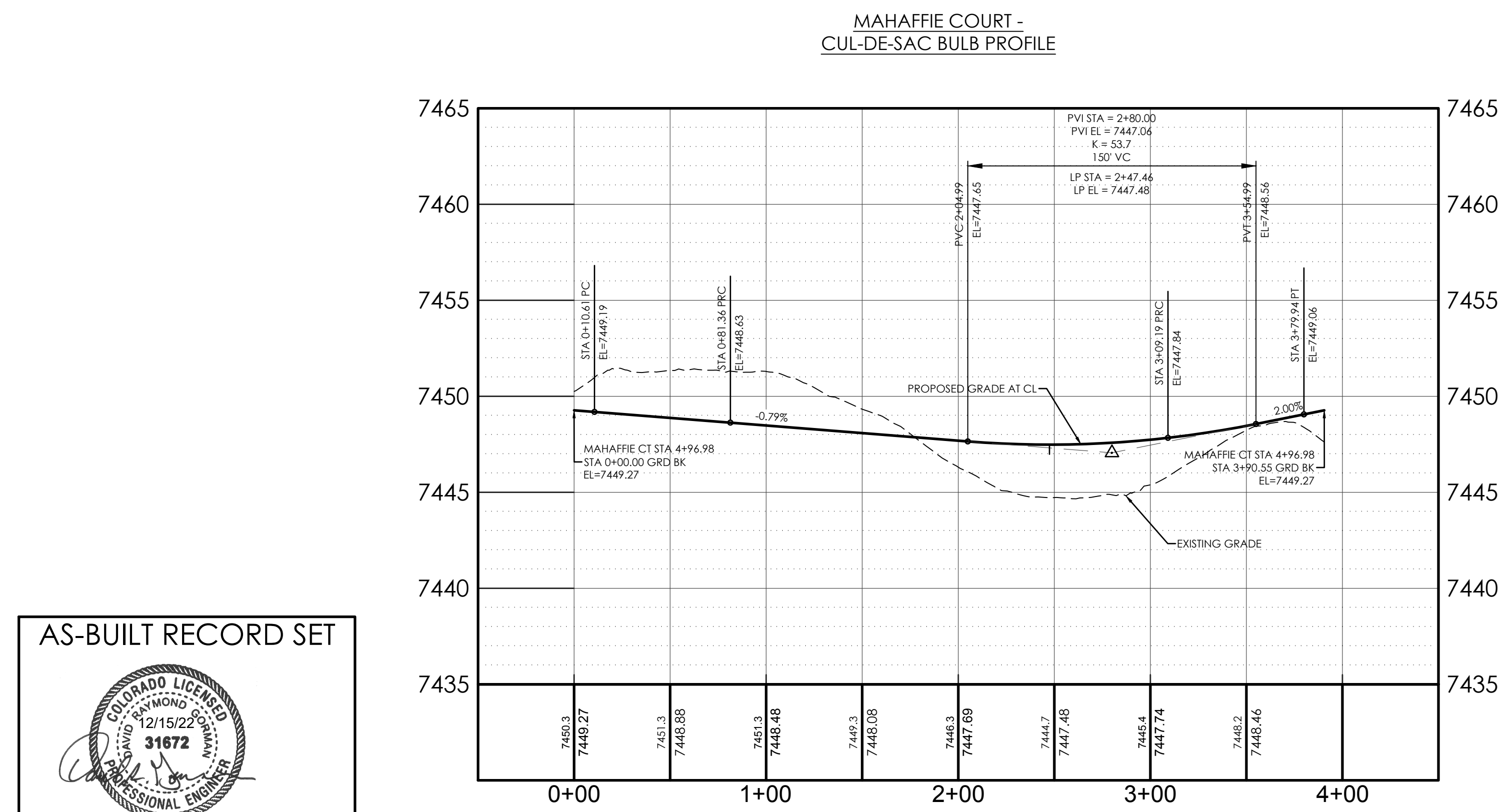
NO.	DATE	DESCRIPTION

MVE PROJECT **61044**
 MVE DRAWING **-CON-PP1**
December 16, 2017
 DESIGNED BY CCC
 DRAWN BY TJW
 CHECKED BY _____
 AS-BUILT BY _____
 CHECKED BY _____

JACKSON RANCH COURT
 FROM STA 6+88.00
 TO STA 12+48.54
 JACKSON RANCH FILING NO. 3
C1.2
 SHEET 3 OF 5



7475
7470
7465
7460
7455
7450
7445
7440
7435



AS-BUILT RECORD SET

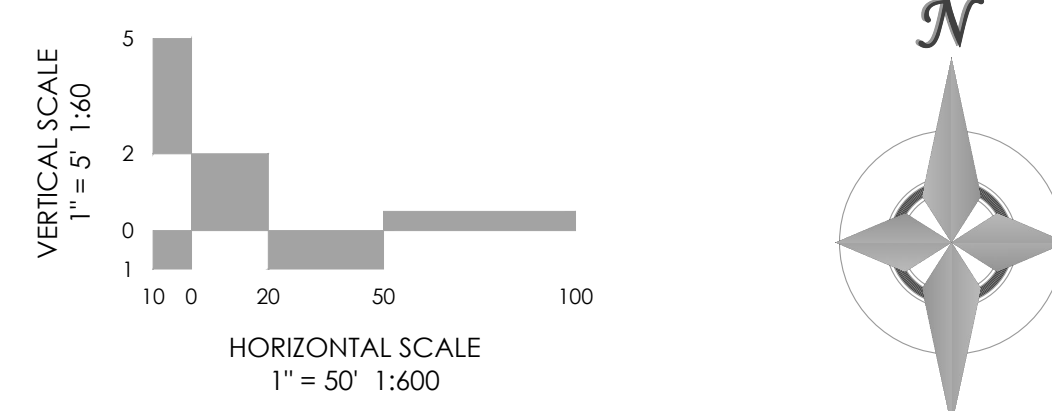
M.V.E., INC.

BENCHMARK: THE BENCHMARK FOR THESE PLANS IS THE TOP OF PANEL POINT "SW", LOCATED NORTHWEST OF ROLLER COASTER ROAD & HIGBY ROAD. ELEVATION = 7461.14' (NAVD88).

BASIS OF BEARINGS: THE SOUTH LINE OF THE NORTHWEST QUARTER OF SECTION 21, TOWNSHIP 11 SOUTH, RANGE 66 WEST OF THE 6TH P.M., EL PASO COUNTY, COLORADO, S88°46'41"W A DISTANCE OF 2639.80 FEET AND MONUMENTED BY A 2 1/2" DIAMETER ALUMINUM CAP LS #23890 ON THE EAST AND A 2 1/2" DIAMETER ALUMINUM CAP LS # 9853 ON THE WEST

DESIGN DATA:
 SIDEWALKS: WIDTH N/A
 LOCATION: Attached Detached
 DESIGN SPEED: 30 MPH
 CURB TYPE: 6" 8" 12" 18"
 ROW WIDTH: 60 FL-FL 28'
 STREET TYPE: RURAL LOCAL

PAVEMENT:
 TYPE: HMA PCC
 THICKNESS: _____
 COMPOSITE SECTION:
 HMA _____ BASE _____
 SUBGRADE STABILIZATION:
 CHEMICAL _____ MECHANICAL _____
 TYPE _____ THICKNESS _____



MVE, INC.
 ENGINEERS SURVEYORS

1903 Irelary street suite 200
 colorado springs co 80909
 719.635.5736 www.mvecivil.com

REVISIONS

MVE PROJECT **61044**
 MVE DRAWING **-CON-PP2**
December 16, 2017
 DESIGNED BY CCC
 DRAWN BY TJW
 CHECKED BY _____
 AS-BUILT BY _____
 CHECKED BY _____

MAHAFFIE COURT
 FROM STA 1+00.00
 TO STA 6+05.08
 JACKSON RANCH FILING NO. 3
C1.3
 SHEET 4 OF 5

EROSION CONTROL NOTES

1. ALL DISTURBED AREAS SHALL BE REVEGETATED. SEE GENERAL NOTES FOR SEED MIX AND APPLICATION NOTES.
2. RIP-RAP APRONS WILL BE PLACED AT ALL CULVERT OUTLETS. (SEE DETAILS FOR RIP-RAP APRONS ON THIS SHEET.)
3. HAY BALES WILL BE PLACED UPSTREAM OF CULVERTS IN NEW ROADSIDE DITCHES AS DETERMINED IN THE FIELD BY THE ENGINEER.
4. ALL PERSONS ENGAGED IN EARTH DISTURBANCE SHALL IMPLEMENT AND MAINTAIN ACCEPTABLE SOIL EROSION AND SEDIMENT CONTROL MEASURES INCLUDING BMPs IN CONFORMANCE WITH THIS EROSION CONTROL PLAN AND THE BMP DETAILS SHOWN ON THIS PLAN.
5. THE INSTALLATION OF THE FIRST LEVEL OF TEMPORARY EROSION CONTROL FACILITIES AND BMPs SHALL BE INSTALLED PRIOR TO ANY EARTH DISTURBANCE OPERATIONS TAKING PLACE.
6. CONTRACTOR SHALL PROVIDE APPROPRIATE EROSION CONTROL MEASURES DURING EARTHWORK OPERATIONS TO CONTROL EROSION AND SEDIMENT TRANSFER TO ADJACENT PROPERTIES. EROSION CONTROL MEASURES ARE NOT LIMITED TO THOSE NOTED ON THIS PLAN.
7. SEDIMENT (MUD AND DIRT) TRANSPORTED ONTO A PUBLIC ROAD, REGARDLESS OF THE SIZE OF THE SITE, SHALL BE CLEANED AT THE END OF EACH DAY.

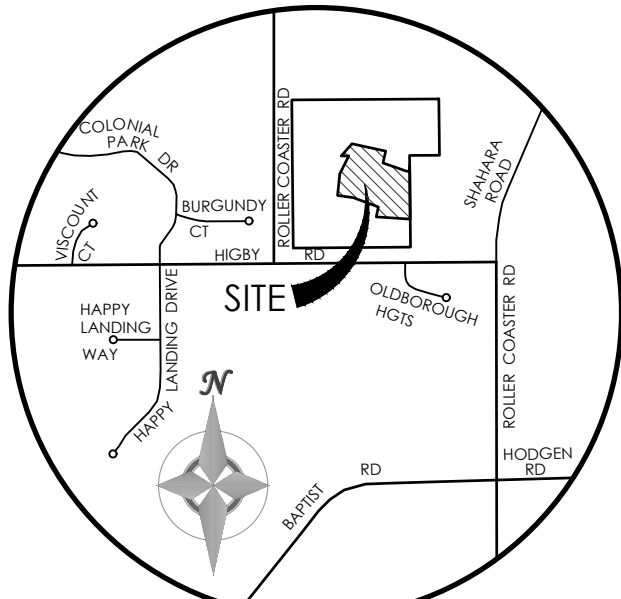
HYDROLOGIC SOIL GROUP		EROSION CONTROL DATA	
MAP UNIT NUMBER	DESCRIPTION	TIMING	
92	TOMAH-CROWFOOT LOAMY, HYDROLOGIC SOIL GROUP B, SLIGHT TO MODERATE HAZARD OF EROSION	ANTICIPATED START & COMPLETION TIME PERIOD OF SITE GRADING	AUGUST, 2017 TO JANUARY, 2018
93	TOMAH-CROWFOOT COMPLEX HYDROLOGIC SOIL GROUP B, MODERATE HAZARD OF EROSION	EXPECTED DATE ON WHICH FINAL STABILIZATION WILL BE COMPLETED	NOVEMBER, 2018
		AREAS	
		TOTAL AREA OF SITE	31.8 ACRES
		AREA OF THE SITE TO BE CLEARED, EXCAVATED OR GRADED	4.1 ACRES
		RECEIVING WATERS	
		NAME OF RECEIVING WATERS	CHERRY CREEK
		SOIL DATA	
		PRIMARY SOIL DESCRIPTION	SEE TABLE
		PERMEABILITY	MODERATELY RAPID
		SURFACE RUNOFF	SLOW TO MEDIUM
		HAZARD OF EROSION	SLIGHT TO MODERATE
		HYDROLOGIC SOIL GROUP	B
		EXISTING PERCENT IMPERVIOUS	0%
		DEVELOPED PERCENT IMPERVIOUS	-
		LOCATION	
		LATITUDE	39.08160°
		LONGITUDE	-104.78865°

MAP SYMBOL	KEY	DESCRIPTION
	CWA	CONCRETE WASHOUT AREA
	SF	SILT FENCE
	SCL	SEDIMENT CONTROL LOG
	SBB	STRAW BALE BARRIER
	RS	ROCK SOCK
	ECB DP	EROSION CONTROL BLANKET/PERMANENT DITCH PROTECTION
	VTC	VEHICLE TRACKING CONTROL
	SW	STREET SWEEPING
	IP	INLET PROTECTION
	OP	PERMANENT OUTLET PROTECTION (SEE CONSTRUCTION PLANS)
	SSA	STABILIZED STAGING AREA
	MU	MULCHING
	SR	SURFACE ROUGHENING
	PS	PERMANENT SEEDING
		LIMITS OF CONSTRUCTION SITE BOUNDARIES
		LIMITS OF CUT/FILL
		LIMITS OF SOIL TYPE



AS-BUILT RECORD SET

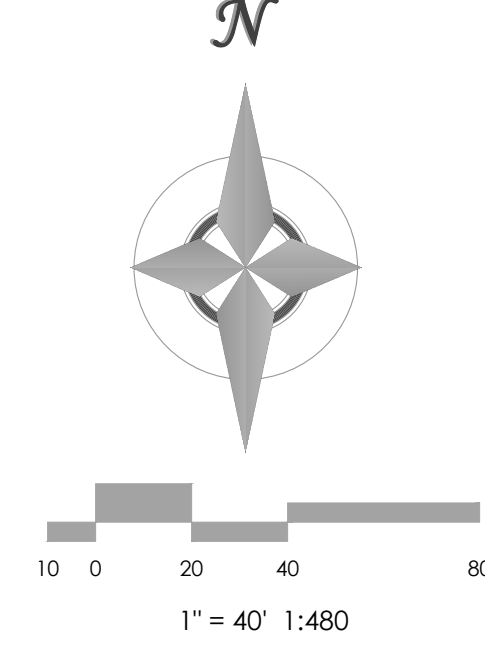
M.V.E., INC.



VICINITY MAP
NOT TO SCALE

BENCHMARK: THE BENCHMARK FOR THESE PLANS IS THE TOP OF PANEL POINT "SW", LOCATED NORTHWEST OF ROLLER COASTER ROAD & HIGBY ROAD. ELEVATION = 7461.14' (NAVD88).

BASIS OF BEARINGS: THE SOUTH LINE OF THE NW QUARTER OF SEC 21, T 11 S, R 86 W OF THE 8TH P.M. EL PASO COUNTY, COLORADO, S88°46'41"W, A DISTANCE OF 2639.80 FEET & MONUMENTED BY A 2 1/2" DIA. ALUMINUM CAP LS #23890 ON THE EAST & A 2 1/2" DIA. ALUMINUM CAP LS # 9853 ON THE WEST



MVE, INC.
ENGINEERS, SURVEYORS

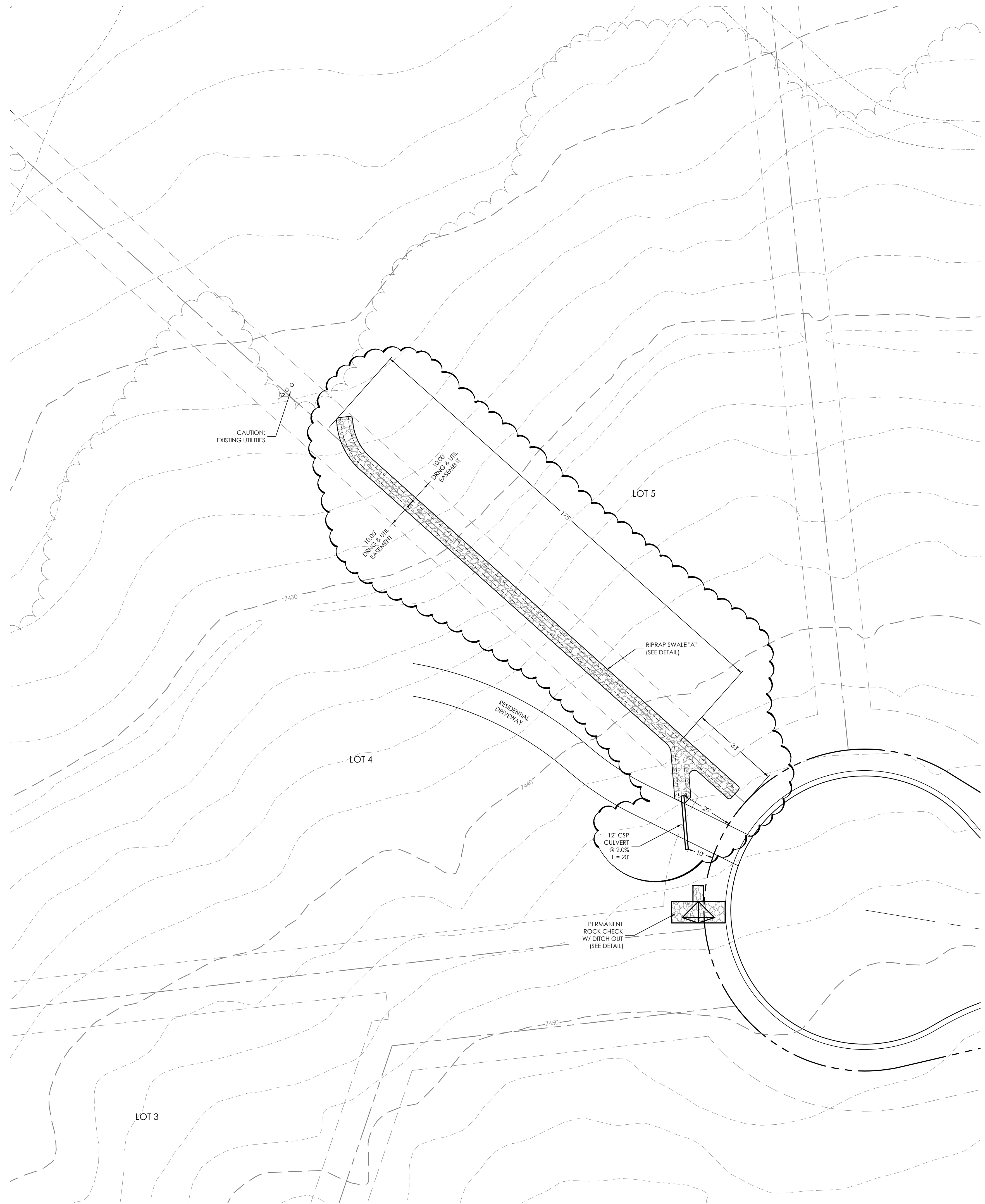
1903 kelley street, suite 200 colorado springs, co. 80909 719.635.5736

DESIGNED BY CCC
DRAWN BY _____
CHECKED BY _____
AS-BUILTS BY _____
CHECKED BY _____

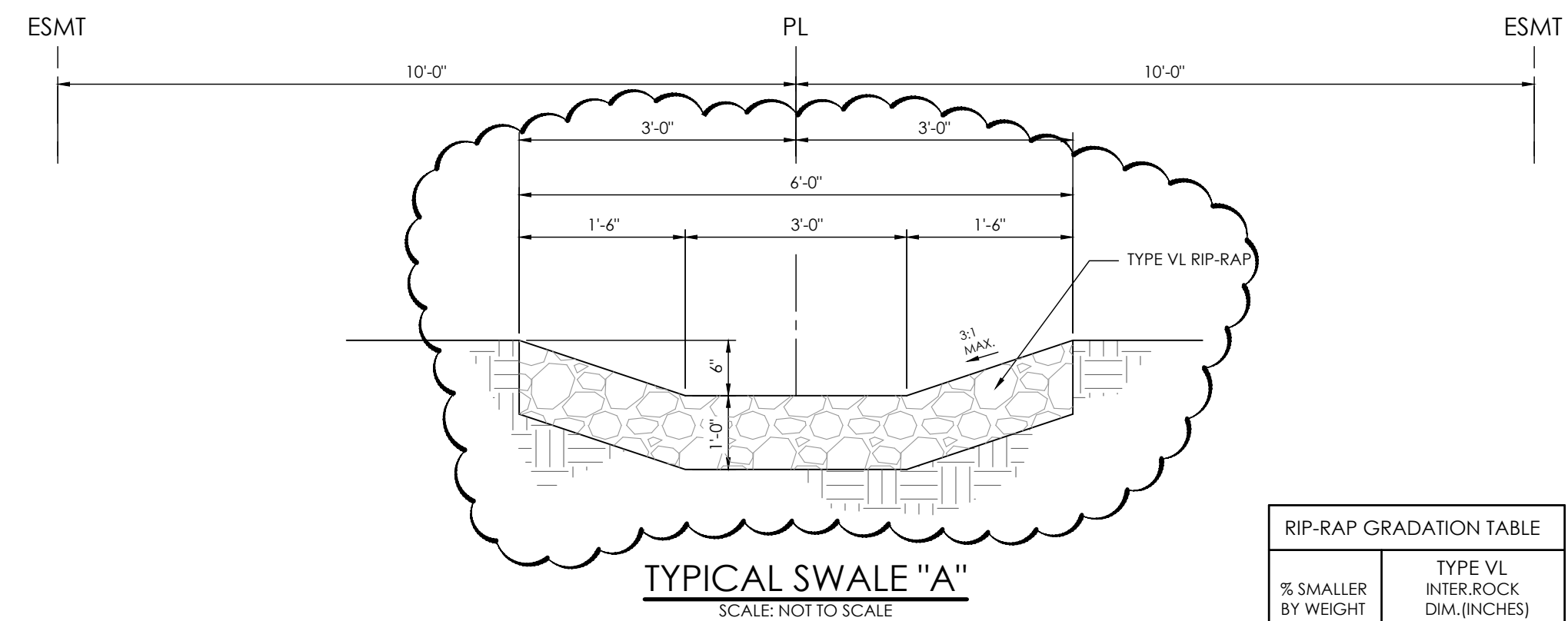
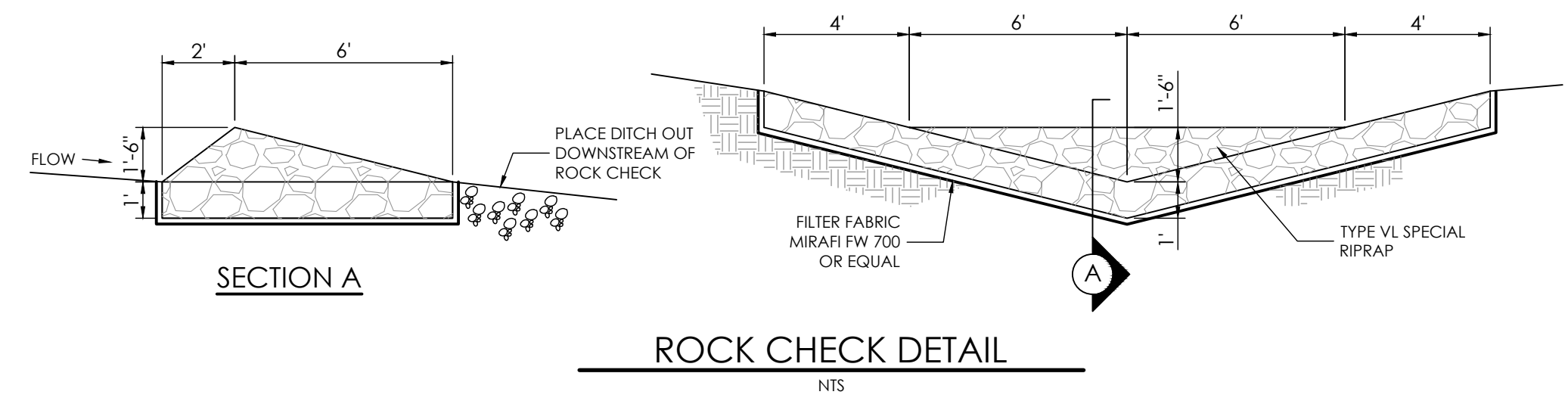
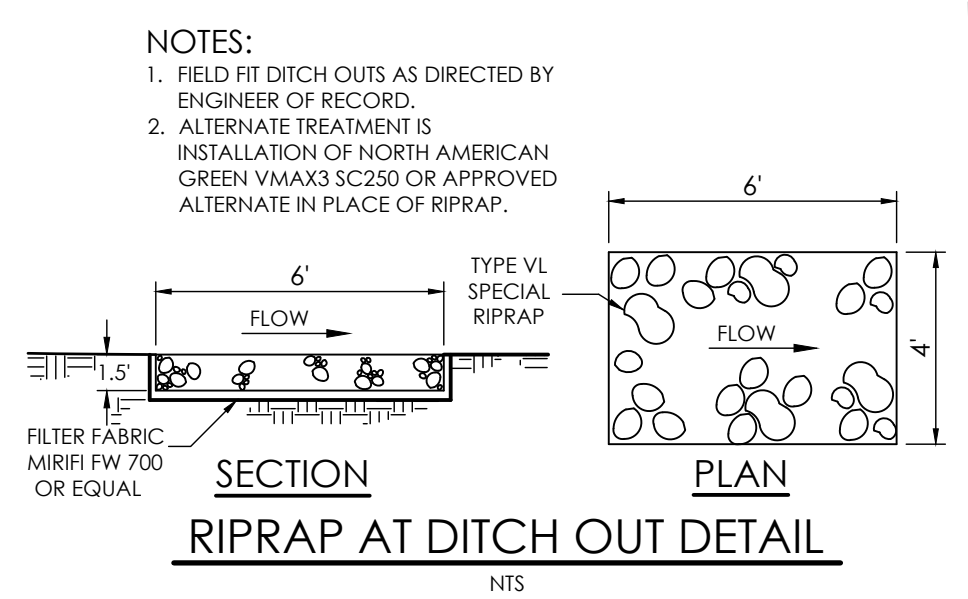
JACKSON RANCH
FILING NO. 3

EROSION CONTROL PLAN
C1.4
MVE PROJECT #1044
MVE DRAWING #CON-EC

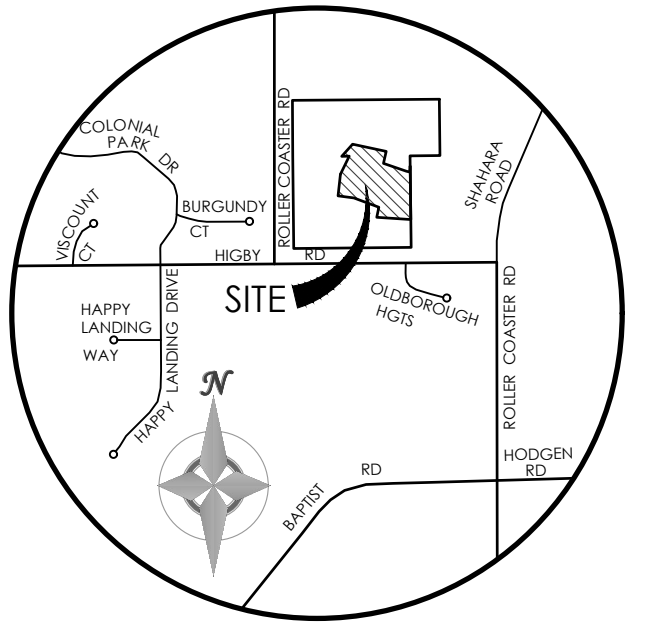
December 16, 2017
SHEET 5 OF 5



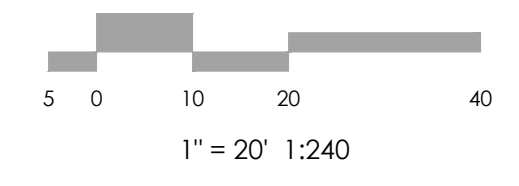
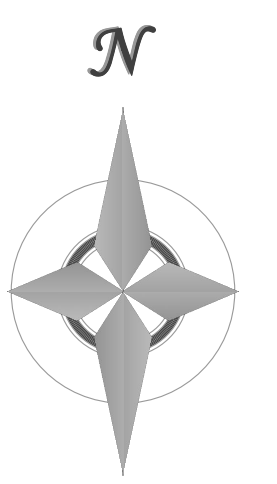
RIP-RAP GRADATION TABLE	
% SMALLER BY WEIGHT	TYPE VL SPECIAL INTER-ROCK DIM.(INCHES)
70 - 100	$d_{100} = 8$
50 - 70	$d_{70} = 6$
35 - 50	$d_{50} = 3$
2 - 10	$d_{10} = 2$



RIP-RAP GRADATION TABLE	
% SMALLER BY WEIGHT	TYPE VL INTER-ROCK DIM.(INCHES)
70 - 100	$d_{100} = 12$
50 - 70	$d_{70} = 9$
35 - 50	$d_{50} = 6$
2 - 10	$d_{10} = 2$



BENCHMARK
 THE BENCHMARK FOR THESE PLANS IS THE TOP OF PANEL POINT 'SW', LOCATED NORTHWEST OF ROLLER COASTER ROAD & HIGBY ROAD. ELEVATION = 7461.14' (NAVD88).



MVE, INC.
 ENGINEERS, SURVEYORS

1903 kelley street, suite 200 colorado springs, co. 80909 719.635.5736

REVISIONS

AS-BUILT RECORD SET

M.V.E., INC.

DESIGNED BY CCC
 DRAWN BY TJW
 CHECKED BY _____
 AS-BUILTS BY _____
 CHECKED BY _____

JACKSON RANCH
 FILING NO. 3

LOT 4 & 5
 DRAINAGE SWALE

C1.5
 MVE PROJECT 61044
 MVE DRAWING CON-45

May 29, 2020
 SHEET 1 OF 1