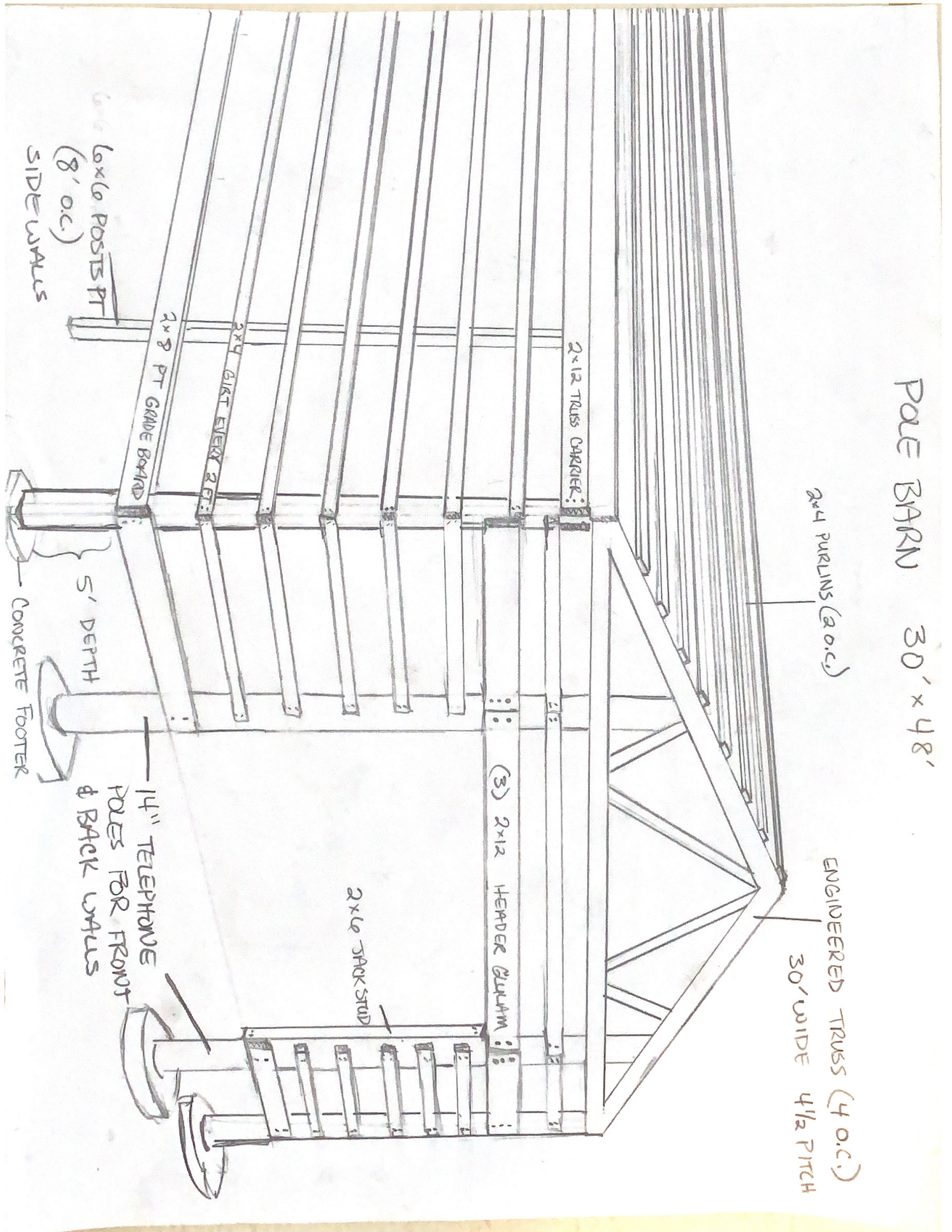
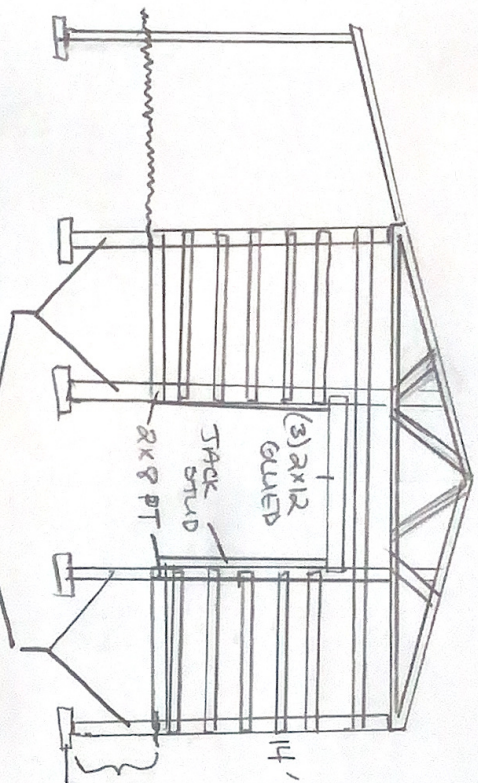


PALE BARN 30' x 48'



FRONT



1 1/4" TELEPHONE POLES

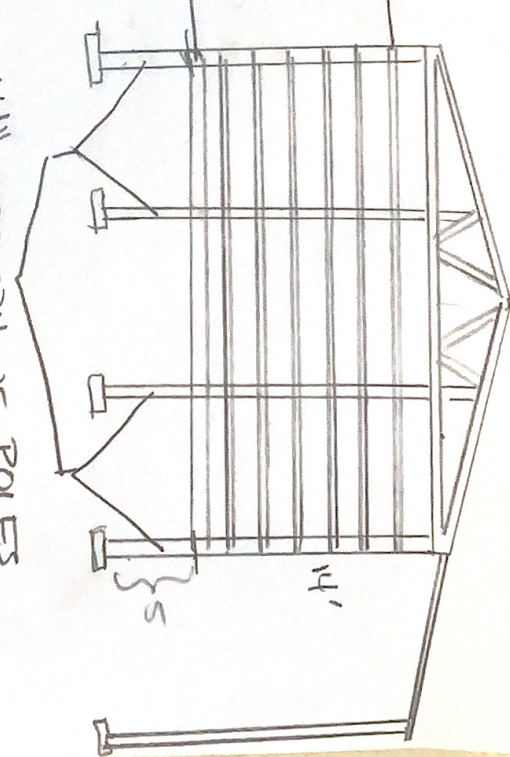
* COVERED WITH 29 GAUGE GALVALUME PANELS *

CONCRETE FOOTER

2x8 PT BOTTOM

2x4 GIRTS 2 OC

BACK



1 1/4" TELEPHONE POLES

ENGINEERED TRUSSES (4 OC)

TELEPHONE POLES

6x6 PT POSTS FOR SIDE WALLS

TELEPHONE POLE 5' DEPTH

CONCRETE FOOTER (18" DIAMETER)

2x8 PT

2x4 GIRTS (2 OC)

2x12 TRUSS CARRIER

2x4 PURLINS (2 OC)