

**Plan View**  
Scale - 1" = 16ft

Statistics						
Description	Symbol	Avg	Max	Min	Max/Min	Avg/Min
SITE ALL	+	1.9 fc	22.6 fc	0.1 fc	226.0:1	19.0:1
WEST PARKING	x	1.4 fc	1.9 fc	0.6 fc	3.2:1	2.3:1
PARKING AND DRIVE	x	2.0 fc	4.6 fc	0.5 fc	9.2:1	4.0:1

Schedule						
Symbol	Label	QTY	Manufacturer	Catalog	Description	Input Power
□	A5	7	OPTEC LED LIGHTING	OLA1-120-UNVL-40-5	LED AREA SERIES SMALL 120W 4000K TYPE 5 MOUNTED 10'-0" AFG	120
□	B1	8	RP LIGHTING	4427-XX-17-XX	LED ARCHITECTURAL SQUARE CYLINDER DOWNLIGHT 3000K MOUNTED 9'-6" AFF	17

## Area Series (Small)

The OLA1 Small Series is a stylish aerodynamic area luminaire that fits within today's accepted design form factors. Excellent optical performance is achieved with Nichia brand LED's and engineered discrete optics. LED life is assured through efficient thermal coupling and dissipation via a durable, pressure die cast, low-copper alloy, aluminum housing. Engineered to last, all gaskets are anti-UV, anti-aging with no harmful out-gassing. All models come standard with a universal pole mount bracket or an optional wall surface box. Luminaires are available with a number of options including alternate CCT choices, finishes, photocells and occupancy sensors.

### FEATURES

- LED Brand: Nichia
- Color Temperatures: 4000K & 5000K (Other CCT's are available upon request)
- CRI: 70
- Lumen Maintenance: L70 = 50,000 hours
- Full Cutoff (meets IDA criteria)
- Operating Temperature: -40°C (-40°F) to 40°C (104°F)
- Durable All Aluminum Pressure Die Cast Housing
- Powder Coat Finish
- Salt Fog Tested to 2500 hours / per ASTM B117
- IP65 Rated (wet listed / NEMA IEC 60529)
- Mounting: Universal Round or Square Pole, Wall Surface Box

### ELECTRICAL SPECIFICATIONS

- Power Input: 120-277V (347-480V Optional)
- Power Factor: > 0.95
- THD: < 15%
- Surge Protection: 20 kV
- Control Options: 0-10V Dimming standard (Photocell and Occupancy Sensors Optional)

### TESTS & CERTIFICATIONS

- ETL (UL 1598, UL 8750, NEMA C82.77)
- CSA (C22.2 No.250.0)
- RoHS Compliant
- Design Lights Consortium (Premium)
- 3G Vibration tested (ANSI C136.31)



### WARRANTY

- Up to 10-Year Warranty (parts or replacement)

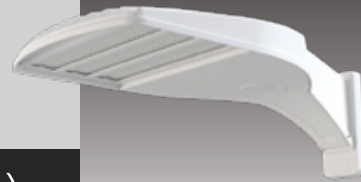
### PERFORMANCE SPECIFICATIONS

Distribution	Model / Wattage	Lumens		Bug Rating		
		4000K	5000K	B	U	G
Type 2	OLA1-080	10,801	10,960	3 *	0	1
	OLA1-120	15,840	16,200	3 *	0	2
	OLA1-150	19,800	20,250	3 *	0	2
Type 3	OLA1-080	11,600	11,760	2 *	0	2
	OLA1-120	16,561	16,920	3 *	0	2
	OLA1-150	20,549	21,000	3 *	0	2
Type 3L	OLA1-080	10,799	10,960	3 *	0	3
	OLA1-120	15,960	16,199	3 *	0	3
	OLA1-150	19,800	20,249	4 *	0	3
Type 3R	OLA1-080	10,799	10,960	3 *	0	3
	OLA1-120	15,960	16,198	3 *	0	3
	OLA1-150	19,800	20,250	4 *	0	3
Type 4	OLA1-080	10,596	10,794	2 *	0	2
	OLA1-120	15,472	15,712	2 *	0	2
	OLA1-150	19,046	19,349	3 *	0	2
Type 4L	OLA1-080	10,800	10,960	3 *	0	3
	OLA1-120	16,080	16,320	3 *	0	3
	OLA1-150	19,800	20,250	4 *	0	4
Type 4R	OLA1-080	10,800	10,960	3 *	0	3
	OLA1-120	16,080	16,320	3 *	0	3
	OLA1-150	19,781	20,250	4 *	0	4
Type 5	OLA1-080	10,032	10,185	4	0	3
	OLA1-120	15,049	15,278	4	0	3
	OLA1-150	18,811	19,097	5	0	4

\* Backlight = 1 when BC (Backlight Control System) is applied.

Voltage (V)	Current (A)		
	80W	120W	150W
120	0.67	1.00	1.25
208	0.38	0.58	0.72
240	0.33	0.50	0.63
277	0.29	0.43	0.54
347	0.23	0.35	0.43
480	0.17	0.25	0.31





## Area Series (Small)

### ORDERING INFORMATION

**EXAMPLE:** OLA1-120-UNVL-50-4-SQ-BZ-PR-TL12

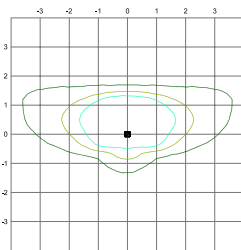
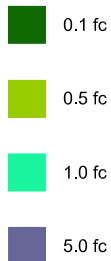
SERIES	WATTAGE	VOLTAGE	COLOR TEMP	DISTRIBUTION	MOUNTING	FINISH	CONTROLS / OPTIONS
OLA1 = Optec LED Area Light	080 = 80W 120 = 120W 150 = 150W	UNVL = 120-277V UNVH = 347-480V	30 = 3000K 40 = 4000K 50 = 5000K	2 = Type 2 3 = Type 3 3L = Type 3 Left 3R = Type 3 Right 4 = Type 4 4L = Type 4 Left 4R = Type 4 Right 5 = Type 5	SQ = Square Pole <sup>1</sup> RD = Round Pole <sup>1</sup> WM = Wall Mount <sup>1,2</sup> TA = Tenon Adapter <sup>1</sup> LK = Leveling Kit <sup>3</sup>	WH = White BZ = Dark Bronze BL = Black NA = Natural Aluminum GM = Graphic Metallic CF = Custom Finish	OSWS = Occupancy Sensor (WattStopper) PR3 = Photocell Receptacle 3-pin PR5 = Photocell Receptacle 5-pin PR7 = Photocell Receptacle 7-pin WCS = Wireless Control (Synapse) <sup>5</sup> BCS = Backlight Control System SF = Single Fuse (120V, 277V, 347V) DF = Double Fuse (220V, 240V, 480V) TLSC = Twist Lock Shorting Cap 924 = UL924 Relay TL12 = Twist Lock Photocell 120V <sup>6</sup> TL24 = Twist Lock Photocell 240V <sup>6</sup> TL27 = Twist Lock Photocell 277V <sup>6</sup> TL28 = Twist Lock Photocell 208V <sup>6</sup> TL34 = Twist Lock Photocell 347V <sup>6</sup> TL48 = Twist Lock Photocell 480V <sup>6</sup>

<sup>1</sup> - For details, reference accessory data sheet.  
<sup>2</sup> - WM option requires SQ pole mount bracket (ordering example: SQ-WM)  
<sup>3</sup> - Leveling kit adjusts up by 5 degrees or down by 5 degrees  
<sup>4</sup> - OSWS = For Wattstopper PIR sensor information and options contact factory  
<sup>5</sup> - WCS = For Synapse wireless controls information and options contact factory for details  
<sup>6</sup> - Photocell default = Fail in "ON" mode (unless otherwise specified)

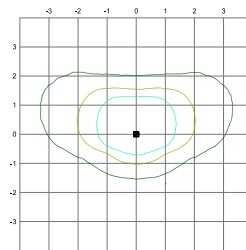
### PHOTOMETRIC PERFORMANCE

Isofootcandle plots = OLA1 120W model in 5000K CCT @ 30' mounting height. Distances are in units of mounting height.

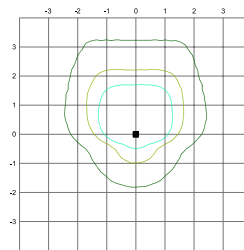
#### LEGEND



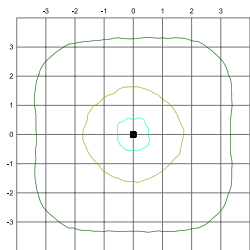
120W (Type 2) Plot



120W (Type 3) Plot



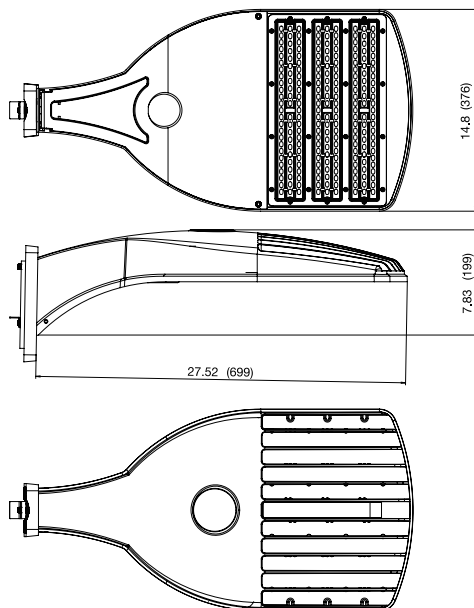
120W (Type 4) Plot



120W (Type 5) Plot

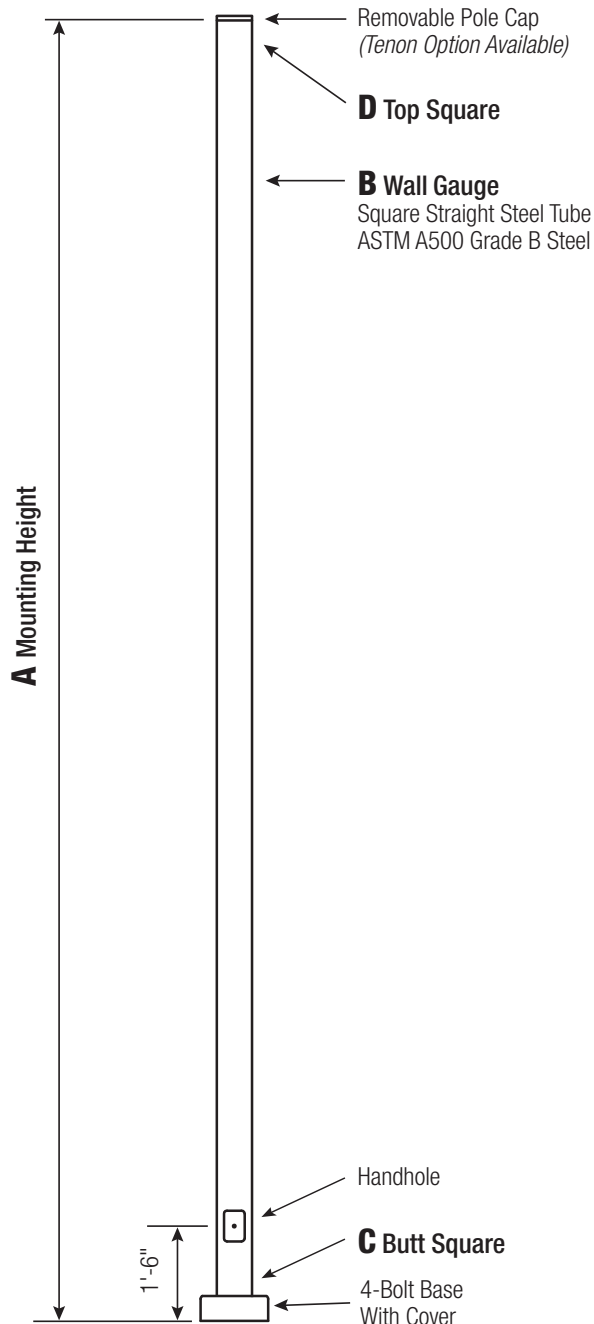
Published luminaire photometric testing performed to IESNA-79-08 standards

### DIMENSIONS, WEIGHTS & EPA



Wattage	80W	120W	150W
Length (inches / mm)	27.52 / 699	27.52 / 699	27.52 / 699
Width (inches / mm)	14.8 / 376	14.8 / 376	14.8 / 376
Height (inches / mm)	7.83 / 199	7.83 / 199	7.83 / 199
Weight (lbs / kg)	19.4 / 8.8	19.4 / 8.9	20 / 9.1

Wattage	Effective Projected Area (EPA) in ft <sup>2</sup>				
80	0.96	1.92	1.81	2.77	3.63
120	0.96	1.92	1.81	2.77	3.63
150	0.96	1.92	1.81	2.77	3.63



Powder Coated, Galvanized or Powder Coated over Galvanized Finish Per Customer Specification.

C BUTT SQ.	D TOP SQ.	F BOLT CIR. DIA.	G BASE SQ.	H BOLT PROJ.	I BOLT SIZE
4 (11 Gauge)	4	8 - 9	8	3.75	.75 x 17 x 3
4 (7 Gauge)	4	8 - 9	8	3.75	.75 x 30 x 3
5 (11 Gauge)*	5	10 - 12	11	3.75	.75 x 30 x 3
5 (7 Gauge)	5	10 - 12	11	4.875	1 x 36 x 4
6	6	11 - 13	12.5	4.875	1 x 36 x 4

\*Requires the use of oversized washers (provided).

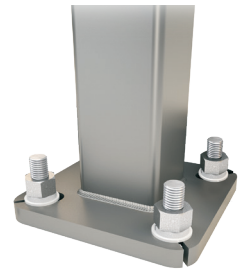
Dimensions in Inches

### Pole

Pole shaft shall be weldable-grade, cold-rolled, commercial quality carbon steel tubing conforming to ASTM A500 Grade B. Options include 11 gauge and 7 gauge. All welds shall conform to AWS D1.1 using ER70S-6 electrodes.

### Base Style

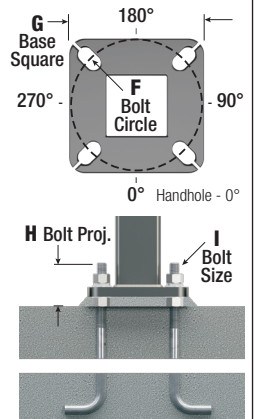
4-Bolt Steel Plate Base Flange of fabricated hot rolled carbon steel conforming to ASTM A36 or equivalent (36 ksi minimum yield) with 2-piece Base Cover and attaching hardware.



### Anchorage

Anchorage Kit will include four (4) L-shaped Steel Anchor Bolts conforming to AASHTO M314-90 Grade 55. Ten inches (10") of threaded end will be galvanized per ASTM A153.

Kits will contain eight (8) Hex Nuts, four (4) Lock Washers, and eight (8) Flat Washers (all components Galvanized Steel). A paper bolt circle template will be provided.



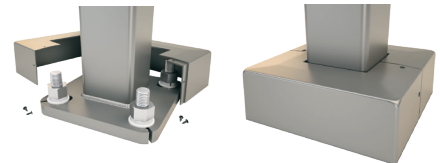
### Handhole

Reinforced, 3" x 5" Handhole with cover, stainless steel screw and backbar. A grounding provision incorporating a tapped 1/2"-13NC hole will be provided.



### Base Cover

Square ABS plastic Base Covers are standard on all SSS poles specified in BA-Black, BM-Dark Bronze and BH-White. SSS poles specified in all other colors will be manufactured of metal materials. Custom specification of SSS square metal style Base Covers in BA, BM and BH powder coated finishes is available.



### Vibration Damper

If determined necessary by Hapco, or if specified by the customer, a first and/or second mode vibration damper will be provided.

A MTG. HGT.	B WALL GAUGE	C BUTT SQ.	TOTAL LUM. WEIGHT	MAXIMUM EPA						CATALOG NUMBER
				90	100	110	120	130	140	
10	11	4	320	25.2	20.0	18.6	15.3	12.7	10.6	SSS10B4-4-*
12	11	4	285	20.6	16.2	14.9	12.1	9.9	8.2	SSS12B4-4-*
14	11	4	255	17.0	13.2	12.1	9.7	7.8	6.3	SSS14B4-4-*
15	11	4	245	15.5	11.9	10.9	8.6	6.8	5.4	SSS15B4-4-*
15	7	4	305	23.4	18.4	17.0	13.8	11.4	9.4	SSS15D4-4-*
16	11	4	235	14.0	10.7	9.7	7.6	5.9	4.6	SSS16B4-4-*
16	7	4	290	21.5	16.8	15.5	12.5	10.2	8.4	SSS16D4-4-*
18	11	4	215	11.3	8.4	7.6	5.7	4.3	3.2	SSS18B4-4-*
18	7	4	265	18.0	13.9	12.8	10.2	8.2	6.6	SSS18D4-4-*
20	11	4	200	9.1	6.5	5.8	4.2	2.9	1.9	SSS20B4-4-*
20	11	5	235	14.1	10.3	9.2	6.8	4.9	3.4	SSS20B5-4-*
20	7	4	240	15.1	11.5	10.5	8.2	6.5	5.0	SSS20D4-4-*
20	7	5	330	26.3	20.3	18.6	14.8	11.9	9.6	SSS20D5-4-*
22	11	4	200	7.2	4.9	4.2	2.8	1.7	0.8	SSS22B4-4-*
22	11	5	215	11.4	8.0	7.1	4.9	3.2	1.9	SSS22B5-4-*
22	7	4	225	12.7	9.5	8.6	6.6	5.0	3.7	SSS22D4-4-*
22	7	5	300	22.4	17.1	15.6	12.2	9.6	7.5	SSS22D5-4-*
25	11	4	200	4.7	2.8	2.2	1.0	-	-	SSS25B4-4-*
25	11	5	200	8.0	5.1	4.3	2.4	1.0	-	SSS25B5-4-*
25	7	4	205	9.7	6.9	6.2	4.4	3.1	2.0	SSS25D4-4-*
25	7	5	260	17.7	13.2	11.9	9.0	6.7	4.9	SSS25D5-4-*
28	11	4	200	2.6	1.0	-	-	-	-	SSS28B4-4-*
28	11	5	200	5.1	2.6	1.9	-	-	-	SSS28B5-4-*
28	7	4	200	7.1	4.8	4.1	2.6	1.5	-	SSS28D4-4-*
28	7	5	235	13.9	9.9	8.8	6.3	4.3	2.7	SSS28D5-4-*
30	11	5	200	3.4	1.1	-	-	-	-	SSS30B5-4-*
30	7	4	200	5.6	3.5	2.9	1.6	-	-	SSS30D4-4-*
30	7	5	215	11.7	8.0	7.0	4.7	2.9	1.5	SSS30D5-4-*
30	7	6	275	19.2	13.7	12.2	8.7	5.9	3.8	SSS30D6-4-*
35	7	5	200	6.9	4.0	3.1	1.2	-	-	SSS35D5-4-*
35	7	6	220	12.6	8.0	6.8	3.9	1.6	-	SSS35D6-4-*
39	7	6	200	8.2	4.2	3.1	0.6	-	-	SSS39D6-4-*

## Catalog Number System

*The catalog number for Hapco poles utilizes the following identification system.*



**Catalog Number Example -**

SSS 20 D 5 - 4 - BA

Square Straight Steel, 20' Mounting Height,  
7 Gauge, 5" Butt Square, No Taper,  
4-Bolt Base, Black Powder Coat Finish.

**EPA Notes:**

**EPA Notes:**  
Effective Projected Area (EPA) in square feet. EPA's calculated using wind velocity (mph) indicated in accordance with 2009 AASHTO LTS-5 using a 25-year design life. Maximum EPA is based on the luminaire weight shown. Increased luminaire weight may reduce the maximum EPA. If weight is exceeded, or if other design life or code is required, please consult the factory.

## Mounting Options

### Side Drill Mount

*Includes removable pole cap.*

**NOTE: A luminaire drilling template must be supplied at time of order.**

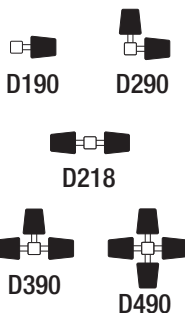


### Tenon Mount

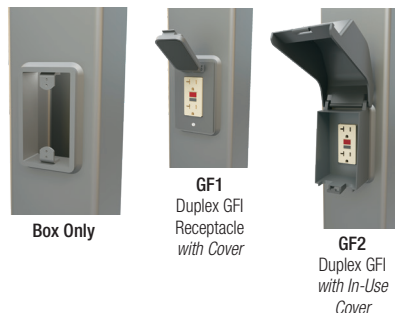
*For Tenon Mount applications specify both Tenon diameter and length.*



## Drill Mount Options

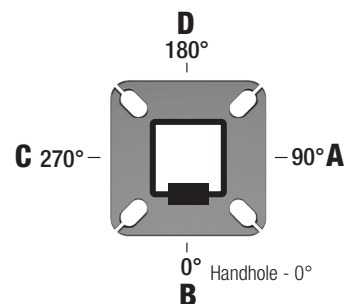


## Electrical Box



**Note:** GFI Options must be specified in Accessories.

### Pole Orientation



HEIGHT	GAUGE	BUTT Sq.	TOP Sq.	BASE STYLE	MOUNTING OPTIONS	ELECTRICAL BOX*	ACCESSORIES/OPTIONS*	FINISH
10 = 10'	B =	4 = 4"	"-"=	4 =	<b>DRILL MOUNT</b>	<b>FA</b> - 30" Up, "D"	<b>C12</b> - Threaded 1/2" Coupling**	<b>POWDER COAT COLORS</b>
12 = 12'	11 Gauge	5 = 5"	No Taper	4-Bolt Base	<b>D000</b> - No Drilling	<b>FB</b> - 30" Up, "B"	<b>C34</b> - Threaded 3/4" Coupling**	<b>BA</b> - Black Powder Coat
14 = 14'		6 = 6"			<b>D190</b> - Std. "A"	<b>FC</b> - 30" Up, "A"	<b>C10</b> - Threaded 1" Coupling**	<b>BH</b> - White Powder Coat
16 = 16'	D =				<b>D290</b> - Std. "A" & "D"	<b>FD</b> - 30" Up, "C"	<b>EHH</b> - Extra Handhole**	<b>BM</b> - Dark Bronze Powder Coat
18 = 18'	7 Gauge				<b>D218</b> - Std. "A" & "C"	<b>FE</b> - 36" Up, "D"	<b>GF1</b> - Duplex GFI Receptacle	<b>BV</b> - Dark Green Powder Coat
20 = 20'					<b>D390</b> - Std. "A", "D", & "C"	<b>FF</b> - 36" Up, "B"	<i>(WR) with Cover</i>	<b>GC</b> - Gray Powder Coat
22 = 22'					<b>D490</b> - Std. "A", "B", "C", & "D"	<b>FG</b> - 36" Up, "A"	<b>GF2</b> - Duplex GFI (WR)	<b>XX</b> - Special Colors*
25 = 25'					<b>DCUS</b> - Custom*	<b>FI</b> - 36" Up, "C"	<i>with In-Use Cover</i>	<b>GALVANIZED</b>
28 = 28'					<b>TENON</b>	<b>FH</b> - 24" Up, "D"	<b>LAB</b> - Less Anchor Bolts	<b>1Q</b> - Galvanized Only
30 = 30'					<b>T204</b> - 2-3/8" O.D. x 4"	<b>FK</b> - 24" Up, "A"	<b>LPC</b> - Less Pole Cap	<b>1C</b> - Black PC Over Galv.
35 = 35'					<b>T304</b> - 2-7/8" O.D. x 4"	<b>FL</b> - 24" Up, "C"	<b>PAB</b> - Pre-shipped Anchor Bolts	<b>1D</b> - White PC Over Galv.
39 = 39'					<b>T356</b> - 3-1/2" O.D. x 6"	<b>FZ</b> - Custom**	<b>VD1</b> - Vib. Damper - 1st Mode	<b>1B</b> - D. Bronze PC Over Galv.
					<b>T406</b> - 4" O.D. x 6"		<b>VD2</b> - Vib. Damper - 2nd Mode	<b>1Y</b> - D. Green PC Over Galv.
					<b>TCUS</b> - Custom Tenon**			<b>1J</b> - Gray PC Over Galv.
						<i>* GFI Receptacle Options Available (Specify in Accessories)</i>	<i>* Add all that apply (Example: CPL-LAB-VD1)</i>	<b>XX</b> - Special PC Over Galv.*
					<i>* Specify Number and Orientation ** Specify O.D. and Height</i>	<i>** Specify Height and Orientation</i>	<i>** Specify Location</i>	<i>* Provide RAL # or Sample Color Chip</i>