



KNOW ALL MEN BY THESE PRESENTS:  
THAT GTL, INC. DBA GTL DEVELOPMENT, INC., THEODORE TCHANG, PRESIDENT  
BEING THE OWNERS OF THE FOLLOWING DESCRIBED TRACT OF LAND:

BEGINNING AT A POINT ON THE WESTERLY RIGHT-OF-WAY LINE OF LAMBERT ROAD, POINT BEING BOUNDARY OF THE VISTAS FILING NO. 1 AT MERIDIAN RANCH, RECORDED WITH RECEPTION NO. 217713953 IN THE RECORDS OF EL PASO COUNTY;

1. THENCE S72°55'12"E A DISTANCE OF 80.00 FEET, A CURVE BEARS S33°21'53"W A DISTANCE OF 96.61 FEET;
2. THENCE S17°04'48"W A DISTANCE OF 421.16 FEET TO A CURVE TO THE RIGHT;
3. THENCE ON THE ARC OF SAID CURVE, HAVING A RADIUS OF 1540.00 FEET, A DELTA ANGLE OF 33°34'11", AN ARC LENGTH OF 875.41 FEET, WHOSE LONG CHORD BEARS S33°21'53"W A DISTANCE OF 96.61 FEET;
4. THENCE S05°49'18"W A DISTANCE OF 31.52 FEET;
5. THENCE S51°35'04"W A DISTANCE OF 60.00 FEET;
6. THENCE N82°39'10"W A DISTANCE OF 31.52 FEET TO A NON-TANGENT CURVE TO THE RIGHT;
7. THENCE ON THE ARC OF SAID CURVE, HAVING A RADIUS OF 1540.00 FEET, A DELTA ANGLE OF 03°34'52", AN ARC LENGTH OF 96.25 FEET, WHOSE LONG CHORD BEARS S55°18'35"W A DISTANCE OF 96.24 FEET TO A POINT ON THE BOUNDARY OF WINDINGWALK FILING NO. 1, AT MERIDIAN RANGE, RECORDED WITH RECEPTION NO. 1, IN THE RECORDS OF EL PASO COUNTY AND A CURVE TO THE RIGHT;

8. THENCE ON THE ARC OF SAID CURVE, HAVING A RADIUS OF 1540.00 FEET, A DELTA ANGLE OF 22°25'04", AN ARC LENGTH OF 602.55 FEET, WHOSE LONG CHORD BEARS S68°18'33"W A DISTANCE OF 598.71 FEET;
9. THENCE S79°35'05"W A DISTANCE OF 28.00 FEET;
10. THENCE N10°28'55"W A DISTANCE OF 80.00 FEET;
11. THENCE N02°35'36"W A DISTANCE OF 27.08 FEET;
12. THENCE N12°32'41"W A DISTANCE OF 116.37 FEET;
13. THENCE N12°32'41"W A DISTANCE OF 60.00 FEET;
14. THENCE N13°41'16"W A DISTANCE OF 184.00 FEET;
15. THENCE N19°52'23"W A DISTANCE OF 124.00 FEET;
16. THENCE N16°53'48"W A DISTANCE OF 60.00 FEET;
17. THENCE N16°53'48"W A DISTANCE OF 130.00 FEET;
18. THENCE N67°43'26"E A DISTANCE OF 120.00 FEET;
19. THENCE N59°22'06"E A DISTANCE OF 120.00 FEET;
20. THENCE N46°39'10"E A DISTANCE OF 120.00 FEET;
21. THENCE N50°54'07"E A DISTANCE OF 125.10 FEET;
22. THENCE N48°41'56"W A DISTANCE OF 92.55 FEET;
23. THENCE N48°27'37"E A DISTANCE OF 125.15 FEET;
24. THENCE N32°40'27"E A DISTANCE OF 349.31 FEET TO A POINT ON THE SOUTHERN BOUNDARY OF STONEBRIDGE FILING NO. 3 AT MERIDIAN RANCH, RECORDED WITH RECEPTION NO. 217714053 IN THE RECORDS OF EL PASO COUNTY;

25. THENCE S55°38'05"E A DISTANCE OF 290.90 FEET;  
26. THENCE S28°43'28"E A DISTANCE OF 308.38 FEET;  
27. THENCE S64°52'09"E A DISTANCE OF 294.58 FEET TO A NON-TANGENT CURVE TO THE LEFT;  
28. THENCE ON THE ARC OF SAID CURVE, HAVING A RADIUS OF 1460.00 FEET, A DELTA ANGLE OF 08°03'03", AN ARC LENGTH OF 205.15 FEET, WHOSE LONG CHORD BEARS N21°06'20"E A DISTANCE OF 204.98 FEET;  
29. THENCE N17°04'48"E A DISTANCE OF 421.16 FEET TO THE POINT OF BEGINNING.

NOTES:

- DEDICATION.

THE ABOVE OWNER(S) HAVING CAUSED SAID TRACT OF LAND TO BE PLATTED INTO LOTS, TRACTS, STREETS AND EASEMENTS AS SHOWN ON THE PLAT, WHICH SUBDIVISION SHALL BE ENTITLED "WINDINGWALK FILING NO. 2 AT MERIDIAN RANCH", A SUBDIVISION IN EL PASO COUNTY, TEXAS, TO BE PLATTED IN ACCORDANCE WITH THE SUBDIVISION ACT, THE PLAT OF SAID OWNER DOES HEREBY AGREE THAT ALL PLATTED STREETS WILL BE CONSTRUCTED AND PROPER DRAINAGE PROVIDED AT THE OWNER'S EXPENSE AND ALL TO THE SATISFACTION OF THE BOARD OF COUNTY COMMISSIONERS OF EL PASO COUNTY, COLORADO OPEN SPACE, LAND AND RECREATION DEPARTMENT, SUBJECT TO THE DECISIONS OF SUBMITTERS OF MAINTENANCE BY PASO COUNTY, COLORADO. THE EXCEPTION OF MEDIANS WHICH WILL BE MAINTAINED BY THE MERIDIAN SERVICE METROPOLITAN DISTRICT.

GTL, INC., DBA GTL DEVELOPMENT, INC.

BY: RAUL GUZMAN, VICE PRESIDENT

STATE OF COLORADO )  
COUNTY OF EL PASO ) S

THIS INSTRUMENT WAS ACKNOWLEDGED BEFORE ME THIS \_\_\_\_ DAY OF \_\_\_\_\_, 20\_\_\_\_  
BY RAUL GUZMAN, VICE PRESIDENT, GTL, INC. DBA GTL DEVELOPMENT, INC.

NOTARY PUBLIC \_\_\_\_\_ ADDRESS \_\_\_\_\_

MY COMMISSION EXPIRES: \_\_\_\_\_

MERIDIAN SERVICE METROPOLITAN DISTRICT

BY: MITLON GABRIELSKI, PRESIDENT

STATE OF COLORADO )  
COUNTY OF EL PASO ) SS

THIS INSTRUMENT WAS ACKNOWLEDGED BEFORE ME THIS \_\_\_\_ DAY OF \_\_\_\_\_, 20\_\_\_\_  
BY MILTON GABRIELSKI, MERIDIAN SERVICE METROPOLITAN DISTRICT.

NOTARY PUBLIC ADDRESS

MY COMMISSION EXPIRES: \_\_\_\_\_

SURVEYOR'S CERTIFICATION.

THE UNDERSIGNED PROFESSIONAL LAND SURVEYOR IN THE STATE OF COLORADO HEREBY STATES THAT THE ACCOMPANYING PLAT WAS SURVEYED AND DRAWN TO NORMAL STANDARDS AND CARE OF A PROFESSIONAL LAND SURVEYOR PRACTICING IN THE STATE OF COLORADO. THE SURVEY WAS PERFORMED AND PLAT PREPARED UNDER HIS SUPERVISION AND ACCURATELY REPRESENTS THE TRACT OF LAND AND SUBDIVISION THEREOF, AND THE REQUIREMENTS OF TITLE 38 OF THE COLORADO REVISED STATUTES, 1973, AS AMENDED, HAVE BEEN MET TO THE BEST OF HIS KNOWLEDGE, INFORMATION AND BELIEF.

JAMES F. LENZ  
PROFESSIONAL LAND SURVEYOR IN THE  
STATE OF COLORADO, PLS NO. 34583

NOTICE: ACCORDING TO COLORADO LAW, YOU MUST COMMENCE ANY LEGAL ACTION BASED UPON ANY DEFECT IN THIS SURVEY WITHIN THREE YEARS AFTER YOU FIRST DISCOVER SUCH DEFECT. IN NO EVENT, MAY ANY ACTION BASED UPON ANY DEFECT IN THIS SURVEY BE COMMENCED MORE THAN TEN YEARS FROM THE DATE OF CERTIFICATION SHOWN HEREON.

*VICINITY MAP*  
*N.T.S.*

THE ACCOMPANYING PLAT OF "WINDINGWALK FILING NO. 2 AT MERIDIAN RANCH",  
EL PASO COUNTY, COLORADO, WAS APPROVED FOR FILING THIS \_\_\_\_ DAY OF \_\_\_\_\_, 20\_\_.

APPROVED BY THE PRESIDENT, BOARD OF COUNTY COMMISSIONERS OF EL PASO COUNTY,  
COLORADO, THIS \_\_\_\_\_ DAY OF \_\_\_\_\_, 20\_\_\_\_.

PRESIDENT, BOARD OF COUNTY COMMISSIONERS  
OF EL PASO COUNTY

APPROVED BY THE BOARD OF COUNTY COMMISSIONERS OF EL PASO COUNTY, COLORADO,  
THIS \_\_\_\_\_ DAY OF \_\_\_\_\_, 20\_\_\_\_.

EL PASO COUNTY CLERK AND RECORDER

STATE OF COLORADO)  
COUNTY OF EL PASO)

I HEREBY CERTIFY THIS INSTRUMENT WAS FILED FOR RECORD IN MY OFFICE AT \_\_\_\_\_ O'CLOCK \_\_\_\_M., THIS \_\_\_\_\_ DAY OF \_\_\_\_\_, 20\_\_\_\_, AND IS DULY RECORDED AT RECEPTION NUMBER \_\_\_\_\_ OF THE RECORDS OF EL PASO COUNTY, COLORADO.

FEE: \_\_\_\_\_ BY: \_\_\_\_\_  
DEPUTY

FEEs:

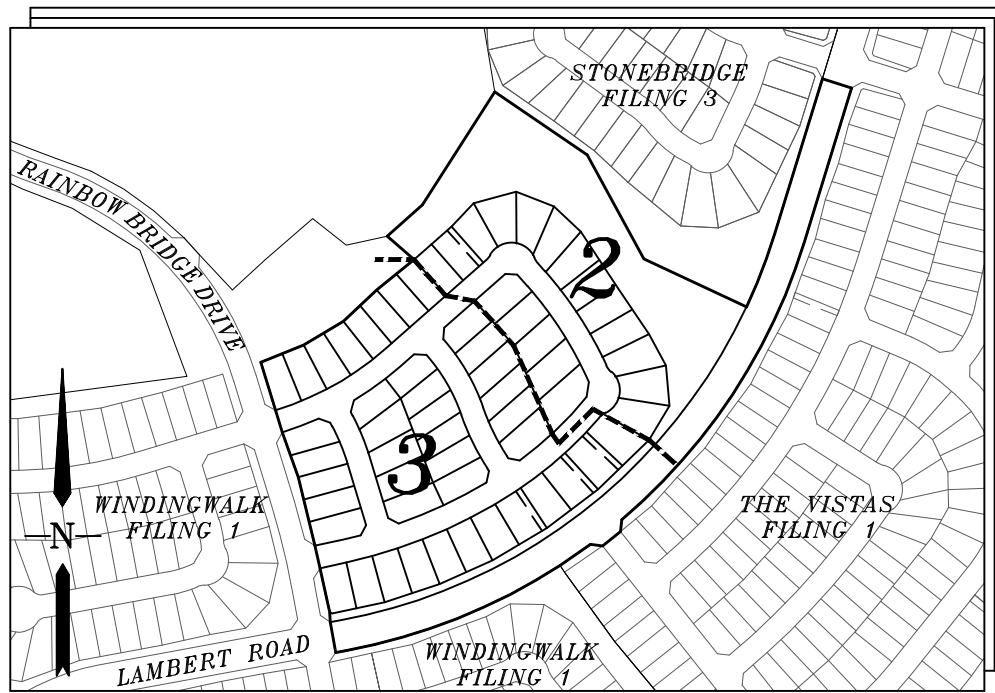
RECEIPT NO: \_\_\_\_\_  
 PLAT FEE: \_\_\_\_\_  
 SURCHARGE: \_\_\_\_\_  
 SCHOOL: \_\_\_\_\_  
 PARK: \_\_\_\_\_  
 BRIDGE: \_\_\_\_\_  
 DRAINAGE: \_\_\_\_\_

DRAWN BY: LCG	DATE: AUGUST 2018
CHECKED BY: TAK	SHEET: 1 OF 3

# WINDINGWALK FILING No. 2 AT MERIDIAN RANCH

A PARCEL OF LAND LOCATED IN A PORTION OF SECTION 29, IN TOWNSHIP 12 SOUTH,  
RANGE 64 WEST OF THE 6TH PRINCIPAL MERIDIAN

EL PASO COUNTY, COLORADO.



INDEX MAP  
N.T.S.

## LEGEND

- O = FOUND MONUMENT AS SHOWN
- ⊙ = FOUND #4 REBAR WITH CAP  
PLS 34583
- = SET #4 REBAR W/CAP  
PLS 34583
- NR = NON-RADIAL BEARING
- (82.62') = EASEMENT OR NO-BUILD DIM.
- (12345) = ADDRESS
- — — = MATCHLINE



GRAPHIC SCALE



( IN FEET )  
1 inch = 50 ft.

DRAWN BY: LCG DATE: AUGUST 2018  
CHECKED BY: TAK SHEET: 2 OF 3

PCD PROJECT NO. SF-18-022

STONEBRIDGE  
FILING NO. 3  
AT MERIDIAN RANCH  
RECEPTION NO.  
120 217714053  
(NOT A PART)

THE VISTAS  
FILING NO. 1  
AT MERIDIAN RANCH  
RECEPTION NO.  
217713953  
(NOT A PART)

TRACT A  
(NOT A PART)

TRACT C  
(NOT A PART)

TRACT A  
4.728 ACRES

TRACT G  
(NOT A PART)

UNPLATTED

SHEET 3

VINDINGWALK DRIVE  
(60 FEET WIDE)

WINDING BEND LANE  
(60 FEET WIDE)

MORNING CREEK LANE  
(60 FEET WIDE)

LAMBERT ROAD  
(60 FEET WIDE)

LAMBERT ROAD  
EXISTING 80' R.O.W.  
AT MERIDIAN RANCH  
RECEPTION NO. 217713953

N48°27'37"E 122.15'

N48°41'56"W 92.55'

S68°36'41"W 130.00'

N42°23'19"E 123.00'

N42°23'19"E 123.00'

N42°23'19"E 123.00'

N42°23'19"E 123.00'

N42°23'19"E 123.00'

S68°36'41"W 130.00'

N42°23'19"E 123.00'

N42°23'19"E 123.00'

N42°23'19"E 123.00'

N42°23'19"E 123.00'

N42°23'19"E 123.00'

S68°36'41"W 130.00'

N42°23'19"E 123.00'

N42°23'19"E 123.00'

N42°23'19"E 123.00'

N42°23'19"E 123.00'

N42°23'19"E 123.00'

S68°36'41"W 130.00'

N42°23'19"E 123.00'

N42°23'19"E 123.00'

N42°23'19"E 123.00'

N42°23'19"E 123.00'

N42°23'19"E 123.00'

S68°36'41"W 130.00'

N42°23'19"E 123.00'

N42°23'19"E 123.00'

N42°23'19"E 123.00'

N42°23'19"E 123.00'

N42°23'19"E 123.00'

S68°36'41"W 130.00'

N42°23'19"E 123.00'

N42°23'19"E 123.00'

N42°23'19"E 123.00'

N42°23'19"E 123.00'

N42°23'19"E 123.00'

S68°36'41"W 130.00'

N42°23'19"E 123.00'

N42°23'19"E 123.00'

N42°23'19"E 123.00'

N42°23'19"E 123.00'

N42°23'19"E 123.00'

S68°36'41"W 130.00'

N42°23'19"E 123.00'

N42°23'19"E 123.00'

N42°23'19"E 123.00'

N42°23'19"E 123.00'

N42°23'19"E 123.00'

S68°36'41"W 130.00'

N42°23'19"E 123.00'

N42°23'19"E 123.00'

N42°23'19"E 123.00'

N42°23'19"E 123.00'

N42°23'19"E 123.00'

S68°36'41"W 130.00'

N42°23'19"E 123.00'

N42°23'19"E 123.00'

N42°23'19"E 123.00'

N42°23'19"E 123.00'

N42°23'19"E 123.00'

S68°36'41"W 130.00'

N42°23'19"E 123.00'

N42°23'19"E 123.00'

N42°23'19"E 123.00'

N42°23'19"E 123.00'

N42°23'19"E 123.00'

S68°36'41"W 130.00'

N42°23'19"E 123.00'

N42°23'19"E 123.00'

N42°23'19"E 123.00'

N42°23'19"E 123.00'

N42°23'19"E 123.00'

S68°36'41"W 130.00'

N42°23'19"E 123.00'

N42°23'19"E 123.00'

N42°23'19"E 123.00'

N42°23'19"E 123.00'

N42°23'19"E 123.00'

S68°36'41"W 130.00'

N42°23'19"E 123.00'

N42°23'19"E 123.00'

N42°23'19"E 123.00'

N42°23'19"E 123.00'

N42°23'19"E 123.00'

S68°36'41"W 130.00'

N42°23'19"E 123.00'

N42°23'19"E 123.00'

N42°23'19"E 123.00'

N42°23'19"E 123.00'

N42°23'19"E 123.00'

S68°36'41"W 130.00'

N42°23'19"E 123.00'

N42°23'19"E 123.00'

N42°23'19"E 123.00'

N42°23'19"E 123.00'

N42°23'19"E 123.00'

S68°36'41"W 130.00'

N42°23'19"E 123.00'

N42°23'19"E 123.00'

N42°23'19"E 123.00'

N42°23'19"E 123.00'

N42°23'19"E 123.00'

S68°36'41"W 130.00'

N42°23'19"E 123.00'

N42°23'19"E 123.00'

N42°23'19"E 123.00'

N42°23'19"E 123.00'

N42°23'19"E 123.00'

S68°36'41"W 130.00'

N42°23'19"E 123.00'

N42°23'19"E 123.00'

N42°23'19"E 123.00'

N42°23'19"E 123.00'

N42°23'19"E 123.00'

S68°36'41"W 130.00'

N42°23'19"E 123.00'

N42°23'19"E 123.00'

N42°23'19"E 123.00'

N42°23'19"E 123.00'

N42°23'19"E 123.00'

S68°36'41"W 130.00'

N42°23'19"E 123.00'

N42°23'19"E 123.00'

N42°23'19"E 123.00'

N42°23'19"E 123.00'

N42°23'19"E 123.00'

S68°36'41"W 130.00'

N42°23'19"E 123.00'

N42°23'19"E 123.00'

N42°23'19"E 123.00'

N42°23'19"E 123.00'

N42°23'19"E 123.00'

S68°36'41"W 130.00'

N42°23'19"E 123.00'

N42°23'19"E 123.00'

N42°23'19"E 123.00'

N42°23'19"E 123.00'

N42°23'19"E 123.00'

S68°36'41"W 130.00'

N42°23'19"E 123.00'

N42°23'19"E 123.00'

N42°23'19"E 123.00'

N42°23'19"E 123.00'

N42°23'19"E 123.00'

S68°36'41"W 130.00'

N42°23'19"E 123.00'

N42°23'19"E 123.00'

N42°23'19"E 123.00'

N42°23'19"E 123.00'

N42°23'19"E 123.00'

S68°36'41"W 130.00'

N42°23'19"E 123.00'

N42°23'19"E 123.00'

N42°23'19"E 123.00'

N42°23'19"E 123.00'

N42°23'19"E 123.00'

S68°36'41"W 130.00'

N42°23'19"E 123.00'

N42°23'19"E 123.00'

N42°23'19"E 123.00'

N42°23'19"E 123.00'

N42°23'19"E 123.00'

S68°36'41"W 130.00'

N42°23'19"E 123.00'

N42°23'19"E 123.00'

N42°23'19"E 123.00'

N42°23'19"E 123.00'

N42°23'19"E 123.00'

S68°36'41"W 130.00'

N42°23'19"E 123.00'

N42°23'19"E 123.00'

N42°23'19"E 123.00'

N42°23'19"E 123.00'

N42°23'19"E 123.00'

S68°36'41"W 130.00'

N42°23'19"E 123.00'

N42°23'19"E 123.00'

N42°23'19"E 123.00'

N42°23'19"E 123.00'

N42°23'19"E 123.00'

S68°36'41"W 130.00'

N42°23'19"E 123.00'

N42°23'19"E 123.00'

N42°23'19"E 123.00'

N42°23'19"E 123.00'

N42°23'19"E 123.00'

S68°36'41"W 130.00'

N42°23'19"E 123.00'

N42°23'19"E 123.00'

N42°23'19"E 123.00'

N42°23'19"E 123.00'

N42°23'19"E 123.00'

S68°36'41"W 130.00'

N42°23'19"E 123.00'

N42°23'19"E 123.00'

N42°23'19"E 123.00'

N42°23'19"E 123.00'

N42°23'19"E 123.00'

S68°36'41"W 130.00'

N42°23'19"E 123.00'

N42°23'19"E 123.00'

N42°23'19"E 123.00'

N42°23'19"E 123.00'

N42°23'19"E 123.00'

S68°36'41"W 130.00'

N42°23'19"E 123.00'

N42°23'19"E 123.00'

N42°23'19"E 123.00'

N42°23'19"E 123.00'

N42°23'19"E 123.00'

S68°36'41"W 130.00'

N42°23'19"E 123.00'

N42°23'19"E 123.00'

N42°23'19"E 123.00'

N42°23'19"E 123.00'

N42°23'19"E 123.00'

S68°36'41"W 130.00'

N42°23'19"E 123.00'

N42°23'19"E 123.00'

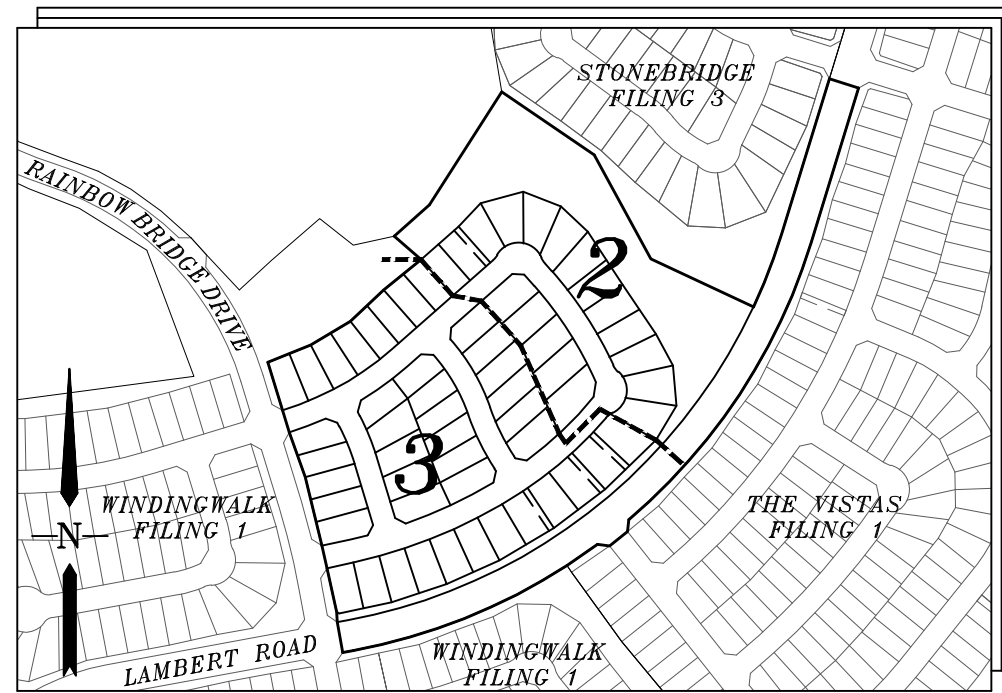
N42°23'19"E 123.00'

N42°23'19"E 123.00'

N42°23'19"E 123.



WINDINGWALK FILING No. 2  
AT MERIDIAN RANCH  
A PARCEL OF LAND LOCATED IN A PORTION OF SECTION 29, IN TOWNSHIP 12 SOUTH,  
RANGE 64 WEST OF THE 6TH PRINCIPAL MERIDIAN  
EL PASO COUNTY, COLORADO.



INDEX MAP  
N.T.S.

LEGEND

- O = FOUND MONUMENT AS SHOWN
- ⊙ = FOUND #4 REBAR WITH CAP  
PLS 34583
- = SET #4 REBAR W/CAP  
PLS 34583
- NR = NON-RADIAL BEARING
- (82.62') = EASEMENT OR NO-BUILD DIM.
- (12345) = ADDRESS
- = MATCHLINE

WINDINGWALK  
FILING NO. 1  
AT MERIDIAN RANCH  
RECEPTION NO.  
XXXXXXXXXX  
(NOT A PART)

WINDINGWALK DR.  
EXISTING 60' R.O.W.  
WINDINGWALK FILING NO. 1  
AT MERIDIAN RANCH  
RECEPTION NO. XXXXXXXXX

TRACT F  
(NOT A PART)

TRACT B  
(NOT A PART)

TRACT C  
(NOT A PART)

TRACT D  
(NOT A PART)

TRACT D  
(NOT A PART)

THE VISTAS  
FILING NO. 1  
AT MERIDIAN RANCH  
RECEPTION NO.  
217713953  
(NOT A PART)

WINDINGWALK  
FILING NO. 1  
AT MERIDIAN RANCH  
RECEPTION NO.  
XXXXXXXXXX  
(NOT A PART)



GRAPHIC SCALE



( IN FEET )  
1 inch = 50 ft.

DRAWN BY: LCG  
CHECKED BY: TAK

DATE: AUGUST 2018  
SHEET: 3 OF 3

PCD PROJECT NO. SF-18-022